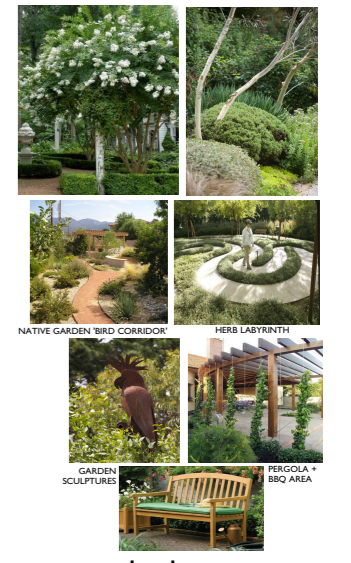


### TREE LEGEND

NATIVE TREES	
MELALEUCA LEUCADENDRA	Weeping Paperbark
BANKSIA SERRATA	Old Man Banksia
WATERHUSIA FLORIBUNDA	Weeping Lillypilly
ACMENA SMITHII	Lillypilly
BUCKINGHAMIA CELSISIMA	Ivory Curl Tree
STYZIGIUM LUEHMANNII	Small Leaf Lillypilly
STENOCARPUS SINUATUS	Old Firewheel Tree
TRISTANOPSIS 'LUSCIOUS'	Luscious Water Gum
AGONIS FLEX 'AFTER DARK'	Burgundy Willow Myrtle
EXOTIC TREES	
PANDANUS TECTORIUS	Screw Pine
DELONIX REGIA	Poinciana
LAGERSTROEMIA INDICA	Crape Myrtle
HOWEA FORSTERIANA	Kentia Palm
HIBISCUS TILACEUS 'RUBRUM'	Burgundy Cottonwood

NOTE: Refer to Sheets L03 + L04 for full planting details and schedule



## SITE LANDSCAPE PLAN

SCALE: 1:200 @ A1  
 REFER TO SHEET L03, L04 + L06 PLANTING PLANS FOR FULL PLANTING DETAILS

0m 2m 4m 6m 8m 10m

NOTE: PLAN TO BE READ IN CONJUNCTION WITH: ARCHITECTURAL PLANS BY GARTNER TROYATO ARCHITECTS; ARBORICULTURAL IMPACT ASSESSMENT BY URBAN FORESTRY AUSTRALIA (Feb 2020)

### LEGEND

PROPOSED LEVELS	MASONRY RETAINING WALLS	TEED COURTYARDS + PATHWAYS
EXISTING SPOT LEVELS	LOW STONE EDGE ADJOINING PATHS + GARDEN BEDS	FIBBLE MULCH INCLUDING OVERLAND FLOW PATH
BOUNDARY	SELECTED GARDEN SCULPTURES	CONCRETE DRIVEWAY
EXISTING TREES TO BE RETAINED	INFORMAL GARDEN SEATING	TEED INTERNAL COURTYARDS
LINE OF UNDERGROUND CARPARK	1000mm WIDE STABILISED DICO GRANITE PATH	LAWN AREA SUR WALTER BUFFALO
STORMWATER PITS		

## LANDSCAPE DESIGN PRINCIPLES

- TO COMPLEMENT AND ENHANCE THE EXISTING STREETSCAPE**
  - PROPOSAL DESIGNED TO PROVIDE LANDSCAPE SURROUNDINGS THAT REFLECT AND HARMONISE WITH EXISTING STREETScape AND CREATE A DISTINCT LANDSCAPE CHARACTER.
  - CANOPY TREES WITHIN FRONT BUILDING SETBACK (MELALEUCA LEUCADENDRA (WEEPING PAPERBARK) SELECTED TO SCREEN + SOFTEN THE BUILT FORM AND PROVIDE CONSISTENCY WITH THE LOCALITY.
  - ENTRANCE FEATURE PLANTING OF PANDANUS TECTORIUS (SCREW PINE) PROPOSED TO REINFORCE COASTAL NATURE OF THE SITE.
  - A COMBINATION OF FOLIAGE AND FLOWERING SPECIES ARE DESIGNED TO ENHANCE THE PRESENTATION EXPERIENCE IN BASSETT STREET.
  - NEW STREET TREES BANKSIA SERRATA (OLD MAN BANKSIA) PROPOSED TO COMPENSATE FOR EXISTING STREET TREES REMOVED FOR DEVELOPMENT.
- TO REDUCE THE IMPACT OF THE BUILT FORM**
  - CANOPY TREES AND UNDERSTORY PLANTING PROPOSED TO PROVIDE SCALE AND SOFTEN THE BUILT FORM, PRESENTING THE DEVELOPMENT WITHIN A VEGETATED SETTING AND MINIMISING THE VISUAL IMPACT.
  - INTERNAL COURTYARD TREES ARE PROPOSED TO PROVIDE UNDERGROUND TO REDUCE THE VISUAL IMPACT OF DEVELOPMENT AND REDUCE IMPACT ON STREET AND ADJOINING PROPERTIES.
- TO PROTECT EXISTING TREES**
  - ALL TREES IDENTIFIED AS SUITABLE FOR RETENTION IN ARBORICULTURAL ASSESSMENT SHALL BE RETAINED AND PROTECTED TO PROVIDE FUTURE AMENITY.
  - NO HIGH RETENTION VALUE TREES PROPOSED FOR REMOVAL.
- TO REPLENISH TREE CANOPY + COMPENSATE FOR TREE REMOVAL**
  - THE FOLLOWING CANOPY TREES HAVE BEEN PROPOSED TO COMPENSATE FOR TREES TO BE REMOVED AND TO REPLENISH NEIGHBOURHOOD TREE CANOPY: MELALEUCA LEUCADENDRA (WEEPING PAPERBARK) (4), WATERHUSIA FLORIBUNDA (1), ACMENA SMITHII (1), BUCKINGHAMIA CELSISIMA (1), DELONIX REGIA (1), PANDANUS TECTORIUS (1), IVORY CURL TREE (1), WEEPING LILLYPILLY (1).
- TO CREATE A LANDSCAPE AS AN EXTENSION OF INTERNAL SPACES**
  - PERIMETER GARDENS AND LAWN AREA DESIGNED TO ENCOURAGE GENTLE EXERCISE AND FACILITATE FLEXIBLE OUTDOOR RECREATION WITH VISITORS.
  - EXTENDED VIEWS INTO THE GARDEN HAVE BEEN CONSIDERED TO ENHANCE DAILY LIFE FOR LESS ACTIVE RESIDENTS.
  - INTERNAL COURTYARD OFFER LEAFY OUTLOOKS FROM PRIVATE RESIDENTIAL ROOMS AND ARE ACCESSIBLE OUTDOOR SEATING AREAS.
  - OUTDOOR DINING AREAS AND TERRACES PROVIDE EXTENDED VIEWS INTO THE GARDENS.
- TO MAINTAIN NEIGHBOUR PRIVACY + AMENITY**
  - SCREEN PLANTING CONSISTING OF PRINCIPALLY FAST GROWING NATIVE SPECIES IS PROPOSED TO PROVIDE BOUNDARY PRIVACY SCREENING.
- TO ENHANCE THE GARDEN EXPERIENCE FOR RESIDENTS**
  - SPECIES SELECTION HAVE BEEN MADE WITH CONSIDERATION OF SITE CONDITIONS AND TO PROVIDE A STIMULATING RANGE OF FLOWER AND FOLIAGE TEXTURES AND COLOURS TO ENCOURAGE RESIDENTS' USE OF LANDSCAPE SPACE. NATIVE AND EXOTIC SPECIES HAVE BEEN INCLUDED. FEATURES INCLUDE:
    - LAWN AREA + LANDSCAPED GARDEN PATHWAYS
    - OUTDOOR SEATING IN SUN AND SHADE
    - YEAR ROUND COLOUR
    - BIRD CORRIDOR NATIVE GARDEN
    - OLD WOODY BACK YARD GARDEN
    - FLOWERING TREES + SHRUBS
    - GARDEN SCULPTURES
    - WATER TREATY YARD GARDEN
    - GARDEN REGOLA + BBQ AREA
- TO PROVIDE FOR ACCESSIBLE USE OF GARDEN**
  - SAFE AND ACCESSIBLE SURFACE AS REQUIRED BY RELEVANT GUIDELINES TO ENSURE MAXIMUM POTENTIAL FOR RESIDENT USE OF OUTDOOR SPACES.
  - SAFETY MEASURES INCLUDING SURFACE SELECTION, GENTLE GRADIENTS, APPROPRIATE SEATING, HANDRAILS AND FENCING SHALL BE INCORPORATED.
- TO COMPLY WITH DESIGN PRINCIPLES OF SEP**
  - THE PROPOSED LANDSCAPE AMPS TO MEET THE DESIGN PRINCIPLES OF THE RELEVANT SEP (HOUSING FOR SENIORS OR PEOPLE WITH A DISABILITY) 2004.
  - REFER TO ARCHITECTURAL PLANS FOR DEEP SOIL AND SITE CALCULATIONS.

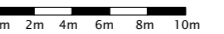


trish dobson landscape architecture  
 34 MORRIS PARKS AVENUE, MONA VALE NSW 2107  
 0408 983020  
 info@trishdobson.com.au  
 TRISH DOBSON  
 REGISTERED LANDSCAPE ARCHITECT #4106, 10/12/2019  
 174 211 481 134

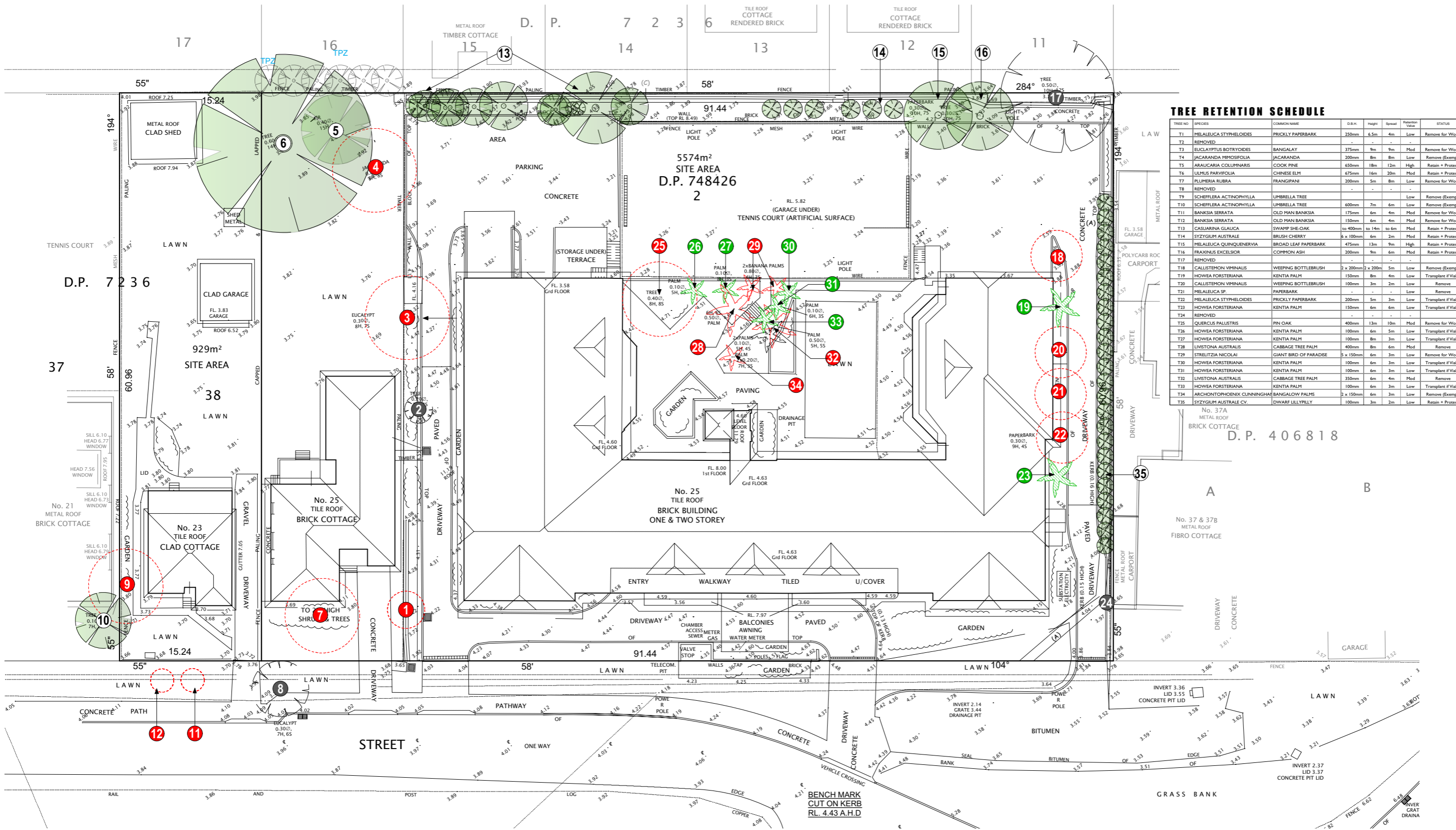
DEVELOPMENT APPLICATION  
 THOMPSON HEALTH BASSETT  
 Proposed Aged Care Facility  
 for Thompson Health Care  
 23 + 33 BASSETT ST, MONA VALE NSW



1:200 @ A1 SCALE  
 24.3.20 DATE  
 2023 JOB  
 DA ISSUE  
 1 of 6 SHEET  
 2003/DA-L01 DWG



## LANDSCAPE SITE PLAN

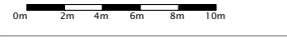


### TREE RETENTION SCHEDULE

TREE NO.	SPECIES	COMMON NAME	D.B.H.	Height	Spread	Retention Value	STATUS
T1	MELALEUCA STYPHELOIDES	PRICKLY PAPERBARK	250mm	6.5m	4m	Low	Remove for Works
T2	REMOVED						
T3	EUCALYPTUS BOTRYOIDES	BANGALAY	375mm	9m	9m	Mod	Remove for Works
T4	JACARANDA MIMOSIFOLIA	JACARANDA	200mm	8m	8m	Low	Remove (Exempt)
T5	ARAUCARIA COLUMNARIS	COOK PINE	650mm	18m	12m	High	Retain + Protect
T6	ULMUS PARVIFOLIA	CHINESE ELM	675mm	16m	20m	Mod	Retain + Protect
T7	PLUMERIA RUBRA	FRANGIPANI	200mm	5m	8m	Low	Remove for Works
T8	REMOVED						
T9	SCHEFFERA ACTINOPHYLLA	UMBRELLA TREE				Low	Remove (Exempt)
T10	SCHEFFERA ACTINOPHYLLA	UMBRELLA TREE	600mm	7m	6m	Low	Remove (Exempt)
T11	BANKSIA SERRATA	OLD MAN BANKSIA	175mm	6m	4m	Mod	Remove for Works
T12	BANKSIA SERRATA	OLD MAN BANKSIA	150mm	6m	4m	Mod	Remove for Works
T13	CASUARINA GLAUCA	SWAMP SHE-OAK	to 400mm	to 14m	to 6m	Mod	Retain + Protect
T14	SYZYGIUM AUSTRALE	BRUSH CHERRY	6 x 100mm	6m	2m	Mod	Retain + Protect
T15	MELALEUCA QUINQUENERVIA	BROAD LEAF PAPERBARK	475mm	13m	9m	High	Remove for Works
T16	FRAXINUS EXCELSIOR	COMMON ASH	200mm	9m	6m	Mod	Retain + Protect
T17	REMOVED						
T18	CALLISTEMON VIMINALIS	WEeping BOTTLEBRUSH	2 x 200mm	2 x 200m	5m	Low	Remove (Exempt)
T19	HOWEA FORSTERIANA	KENTIA PALM	150mm	8m	4m	Low	Transplant if Viable
T20	CALLISTEMON VIMINALIS	WEeping BOTTLEBRUSH	100mm	3m	2m	Low	Remove
T21	MELALEUCA SP.	PAPERBARK	-	-	-	Low	Remove
T22	MELALEUCA STYPHELOIDES	PRICKLY PAPERBARK	200mm	5m	3m	Low	Transplant if Viable
T23	HOWEA FORSTERIANA	KENTIA PALM	150mm	6m	6m	Low	Transplant if Viable
T24	REMOVED						
T25	QUERCUS PALLISTRIS	PIN OAK	400mm	13m	10m	Mod	Remove for Works
T26	HOWEA FORSTERIANA	KENTIA PALM	100mm	6m	5m	Low	Transplant if Viable
T27	HOWEA FORSTERIANA	KENTIA PALM	100mm	8m	3m	Low	Transplant if Viable
T28	LIVISTONA AUSTRALIS	CABBAGE TREE PALM	400mm	8m	6m	Mod	Remove
T29	STRELTIZIA NICOLAI	GIANT BIRD OF PARADISE	5 x 150mm	6m	3m	Low	Remove for Works
T30	HOWEA FORSTERIANA	KENTIA PALM	100mm	6m	3m	Low	Transplant if Viable
T31	HOWEA FORSTERIANA	KENTIA PALM	100mm	6m	3m	Low	Transplant if Viable
T32	LIVISTONA AUSTRALIS	CABBAGE TREE PALM	350mm	6m	4m	Mod	Remove
T33	HOWEA FORSTERIANA	KENTIA PALM	100mm	6m	3m	Low	Transplant if Viable
T34	ARCHONOTOPHORBIUM CUNNINGHAMII	BANGALOW PALMS	2 x 150mm	6m	3m	Low	Remove (Exempt)
T35	SYZYGIUM AUSTRALE CV.	DWARF LILLYPILLY	100mm	3m	2m	Low	Retain + Protect

### TREE RETENTION PLAN

SCALE 1:200 @ A1  
 NOTE  
 PLAN TO BE READ IN CONJUNCTION WITH ARCHITECTURAL PLANS BY GARTNER TROVATO ARCHITECTS ARBORICULTURAL IMPACT ASSESSMENT BY PAINTREE CONSULTING



#### LEGEND

- PROPOSED LEVELS (RL 11.97)
- EXISTING SPOT LEVELS (3.80)
- EXISTING TREES TO BE REMOVED
- EXISTING TREES TO BE RETAINED ON SITE
- EXISTING TREES TO BE RETAINED OFF SITE
- SURVEYED TREES NO LONGER LOCATED ON SITE
- KENTIA PALMS PROPOSED TO BE TRANSPLANTED
- EXISTING PALMS TO BE REMOVED

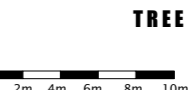
### TREE RETENTION AIMS

- TO REMOVE ONLY THOSE TREES LOCATED WITHIN THE FOOTPRINT OF THE PROPOSED BUILDING OR DRIVEWAY OR THOSE TREES DEEMED BY THE PROJECT ARCHITECT TO BE UNSTABLE BEYOND THEIR USEFUL LIFE EXPECTANCY / SINCECANT, OR THOSE TREES IDENTIFIED AS EXEMPT FROM PROTECTION UNDER PIT/WATER DCP.
- TO RETAIN NATIVE TREES T13 CASUARINA GLAUCA, T14 SYZYGIUM AUSTRALE, T15 MELALEUCA QUINQUENERVIA ALONG THE SOUTHERN BOUNDARY WHICH OFFER ESTABLISHED SCREENING AND AMENITY.
- TO TRANSPLANT SUITABLE MATURE PALM TREES REQUIRED TO BE REMOVED FOR THE DEVELOPMENT ELSEWHERE ON SITE SO AS TO PROVIDE AN ESTABLISHED CONTRIBUTION TO THE FUTURE LANDSCAPE AREAS OF THE AGED FACILITY.
- TO RETAIN EXISTING SCREEN SHRUBS T25 SYZYGIUM AUSTRALE IDENTIFIED BY SURVEY ON WESTERN BOUNDARY AS VALUABLE PRIVACY SCREENING ALONG NEIGHBOURING PROPERTY BOUNDARY.
- THE LANDSCAPE PLANS HAVE BEEN INFORMED BY THE DETAILED ARBORICULTURAL REPORT PREPARED BY URBAN FORESTRY AUSTRALIA. TREE NUMBERS ALLOCATED IN THE ARBORICULTURAL REPORT HAVE BEEN USED ON LANDSCAPE PLANS. SEVERAL YOUNG TREES / SHRUBS, CONSIDERED USEFUL FOR RETENTION AND NOT SHOWN ON SURVEY HAVE ALSO BEEN INCLUDED ON LANDSCAPE PLANS.

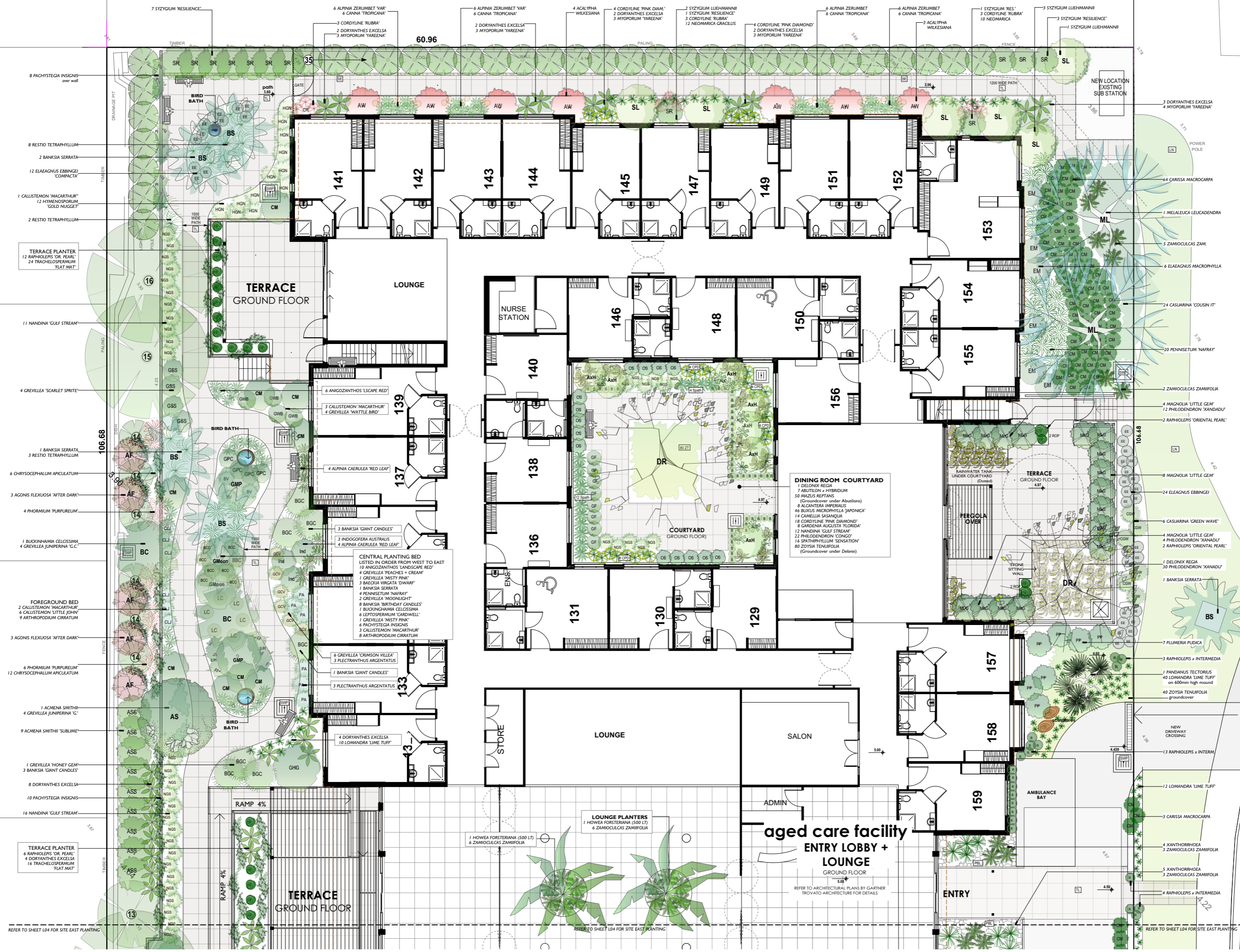


trish dobson landscape architecture  
 144 MARINE PARADE, AVALON, NSW 2107  
 0408 983020  
 trish@trishdobson.com.au  
 trishdobson.com.au  
 REGISTERED LANDSCAPE ARCHITECT 4410, 10/10/2012

DEVELOPMENT APPLICATION  
 THOMPSON HEALTH BASSETT  
 Proposed Aged Care Facility  
 for Thompson Health Care  
 23 + 33 BASSETT ST, MONA VALE NSW

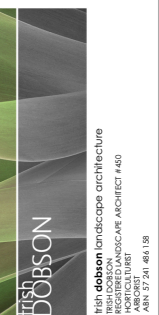


TREE RETENTION PLAN  
 1:200 @ A1 SCALE  
 DATE 24.12.20  
 JOB THOMPSON HEALTH CARE  
 DRAWN BY TRISH DOBSON  
 CHECKED BY TRISH DOBSON  
 2 of 6 SHEET  
 DWG 2003/ DA-L02



**NOTE:**  
REFER TO SHEET L04 FOR PLANTING DETAILS EASTERN PORTION OF SITE.  
REFER TO SHEET L05 FOR FULL PLANTING SCHEDULE.

**AMENDMENTS**



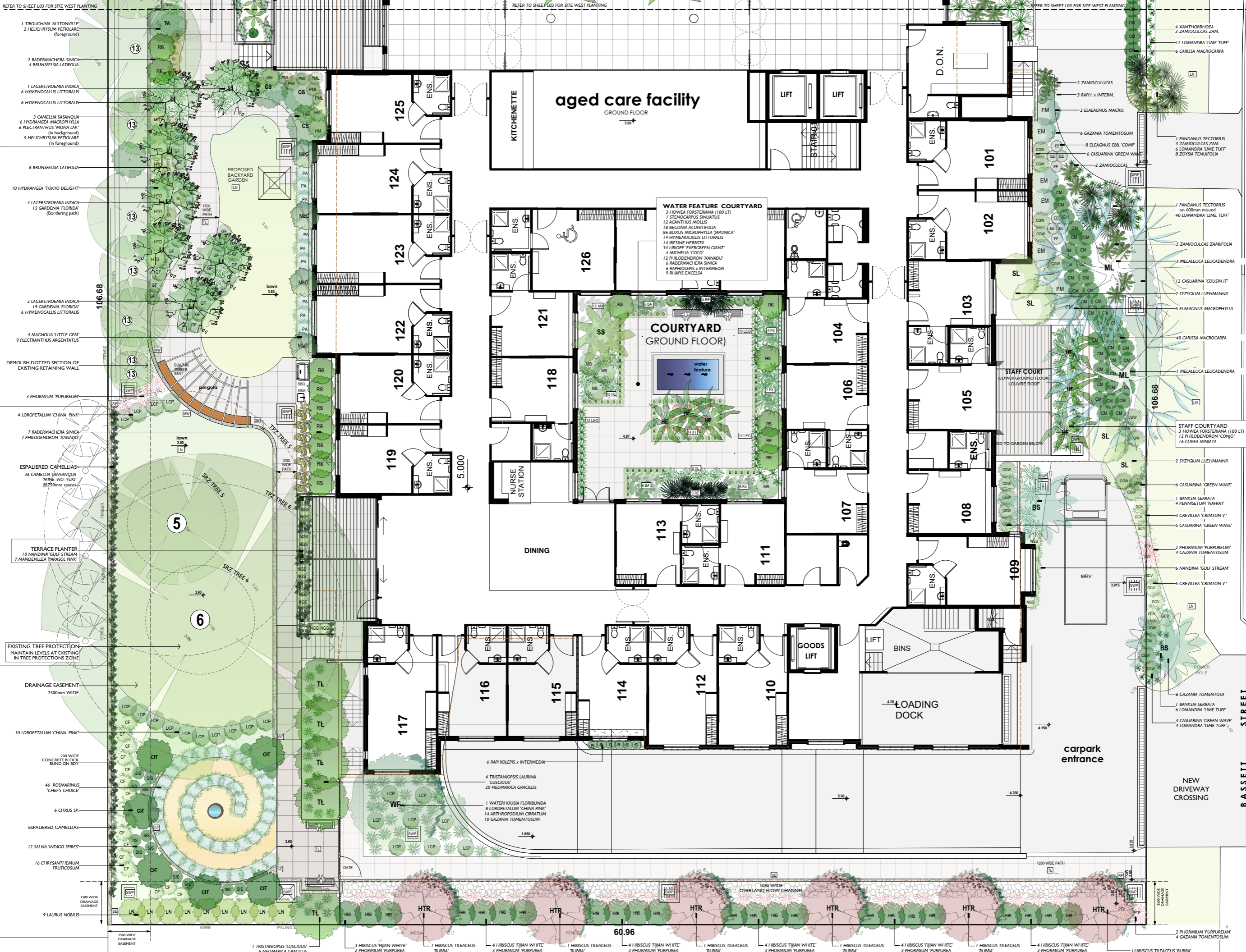
CLIENT  
Thompsons Health Care

PROJECT  
AGED CARE FACILITY  
23 + 33 BASSETT STREET  
MONA VALE

**PLANTING PLAN WEST**

SCALE 1:100@A1  
DATE 24.3.20  
ISSUE DA  
SHEET 3 of 6

JOB 2003  
DWG NO DA-L03



REFER TO SHEET L03 FOR SITE WEST PLANTING

REFER TO SHEET L03 FOR SITE WEST PLANTING

REFER TO SHEET L03 FOR SITE WEST PLANTING

- 1 TIBOUCHINA 'ALSTONVILLE'
- 2 HELICHRYSUM PETIOLARE (foreground)
- 2 RADERMACHERA SINICA
- 4 BRUNSFELSIA LATIFOLIA
- 1 LAGERSTROEMIA INDICA
- 6 HYMENOCALLIS LITTORALIS
- 6 HYMENOCALLIS LITTORALIS
- 3 CAMELLIA SASANQUA
- 6 HYDRANGEA MACROPHYLLA
- 6 FLECTRANTHUS 'MONA LAV.' (in background)
- 5 HELICHRYSUM PETIOLARE (in foreground)
- 8 BRUNSFELSIA LATIFOLIA
- 10 HYDRANGEA 'TOKYO DELIGHT'
- 4 LAGERSTROEMIA INDICA
- 15 GARDENIA 'FLORIDA' (bordering path)
- 2 LAGERSTROEMIA INDICA
- 19 GARDENIA 'FLORIDA'
- 6 HYMENOCALLIS LITTORALIS
- 4 MAGNOLIA 'LITTLE GEM'
- 9 FLECTRANTHUS ARGENTATUS
- DEMOLISH DOTTED SECTION OF EXISTING RETAINING WALL
- 3 PHORMIUM 'PURPUREUM'
- 4 LOROPETALUM 'CHINA PINK'
- 7 RADERMACHERA SINICA
- 7 PHILODENDRON 'KANADU'
- ESPALIERED CAMELLIAS
- 36 CAMELLIA SASANQUA 'MINE-NO-TURK' @ 700mm spacing
- TERRACE PLANTER
- 10 NANDINA 'GULF STREAM'
- 7 MANDEVILLEA 'PARASOL PINK'
- EXISTING TREE PROTECTION MAINTAIN LEVELS AT EXISTING IN TREE PROTECTIONS ZONE
- DRAINAGE EASEMENT 2500mm WIDE
- 10 LOROPETALUM 'CHINA PINK'
- 220 WIDE CONCRETE BLOCK BUND ON BDT
- 46 ROSMARINUS 'CHEF'S CHOICE'
- 6 CITRUS SP.
- ESPALIERED CAMELLIAS
- 12 SALVIA 'INDIGO SPIRES'
- 16 CHRYSANTHEMUM FRUTICOSUM
- 9 LAURUS NOBILIS
- 1 TRISTANIOPSIS 'LUSCIOUS'
- 6 NEOMARICA GRACILLIS
- 3 HIBISCUS 'FIJIAN WHITE'
- 2 PHORMIUM 'PURPUREA'
- 1 HIBISCUS TILEACEUS 'RUBRA'
- 4 HIBISCUS 'FIJIAN WHITE'
- 3 PHORMIUM 'PURPUREA'
- 1 HIBISCUS TILEACEUS 'RUBRA'
- 4 HIBISCUS 'FIJIAN WHITE'
- 3 PHORMIUM 'PURPUREA'
- 1 HIBISCUS TILEACEUS 'RUBRA'
- 4 HIBISCUS 'FIJIAN WHITE'
- 3 PHORMIUM 'PURPUREA'
- 1 HIBISCUS TILEACEUS 'RUBRA'
- 4 HIBISCUS 'FIJIAN WHITE'
- 3 PHORMIUM 'PURPUREA'
- 1 HIBISCUS TILEACEUS 'RUBRA'
- 2 PHORMIUM 'PURPUREUM'
- 4 GAZANIA TOMENTOSUM
- 1 TIBOUCHINA 'ALSTONVILLE'
- 2 HELICHRYSUM PETIOLARE (foreground)
- 2 RADERMACHERA SINICA
- 4 BRUNSFELSIA LATIFOLIA
- 1 LAGERSTROEMIA INDICA
- 6 HYMENOCALLIS LITTORALIS
- 6 HYMENOCALLIS LITTORALIS
- 3 CAMELLIA SASANQUA
- 6 HYDRANGEA MACROPHYLLA
- 6 FLECTRANTHUS 'MONA LAV.' (in background)
- 5 HELICHRYSUM PETIOLARE (in foreground)
- 8 BRUNSFELSIA LATIFOLIA
- 10 HYDRANGEA 'TOKYO DELIGHT'
- 4 LAGERSTROEMIA INDICA
- 15 GARDENIA 'FLORIDA' (bordering path)
- 2 LAGERSTROEMIA INDICA
- 19 GARDENIA 'FLORIDA'
- 6 HYMENOCALLIS LITTORALIS
- 4 MAGNOLIA 'LITTLE GEM'
- 9 FLECTRANTHUS ARGENTATUS
- DEMOLISH DOTTED SECTION OF EXISTING RETAINING WALL
- 3 PHORMIUM 'PURPUREUM'
- 4 LOROPETALUM 'CHINA PINK'
- 7 RADERMACHERA SINICA
- 7 PHILODENDRON 'KANADU'
- ESPALIERED CAMELLIAS
- 36 CAMELLIA SASANQUA 'MINE-NO-TURK' @ 700mm spacing
- TERRACE PLANTER
- 10 NANDINA 'GULF STREAM'
- 7 MANDEVILLEA 'PARASOL PINK'
- EXISTING TREE PROTECTION MAINTAIN LEVELS AT EXISTING IN TREE PROTECTIONS ZONE
- DRAINAGE EASEMENT 2500mm WIDE
- 10 LOROPETALUM 'CHINA PINK'
- 220 WIDE CONCRETE BLOCK BUND ON BDT
- 46 ROSMARINUS 'CHEF'S CHOICE'
- 6 CITRUS SP.
- ESPALIERED CAMELLIAS
- 12 SALVIA 'INDIGO SPIRES'
- 16 CHRYSANTHEMUM FRUTICOSUM
- 9 LAURUS NOBILIS
- 1 TRISTANIOPSIS 'LUSCIOUS'
- 6 NEOMARICA GRACILLIS
- 3 HIBISCUS 'FIJIAN WHITE'
- 2 PHORMIUM 'PURPUREA'
- 1 HIBISCUS TILEACEUS 'RUBRA'
- 4 HIBISCUS 'FIJIAN WHITE'
- 3 PHORMIUM 'PURPUREA'
- 1 HIBISCUS TILEACEUS 'RUBRA'
- 4 HIBISCUS 'FIJIAN WHITE'
- 3 PHORMIUM 'PURPUREA'
- 1 HIBISCUS TILEACEUS 'RUBRA'
- 4 HIBISCUS 'FIJIAN WHITE'
- 3 PHORMIUM 'PURPUREA'
- 1 HIBISCUS TILEACEUS 'RUBRA'
- 4 HIBISCUS 'FIJIAN WHITE'
- 3 PHORMIUM 'PURPUREA'
- 1 HIBISCUS TILEACEUS 'RUBRA'
- 2 PHORMIUM 'PURPUREUM'
- 4 GAZANIA TOMENTOSUM
- 1 TIBOUCHINA 'ALSTONVILLE'
- 2 HELICHRYSUM PETIOLARE (foreground)
- 2 RADERMACHERA SINICA
- 4 BRUNSFELSIA LATIFOLIA
- 1 LAGERSTROEMIA INDICA
- 6 HYMENOCALLIS LITTORALIS
- 6 HYMENOCALLIS LITTORALIS
- 3 CAMELLIA SASANQUA
- 6 HYDRANGEA MACROPHYLLA
- 6 FLECTRANTHUS 'MONA LAV.' (in background)
- 5 HELICHRYSUM PETIOLARE (in foreground)
- 8 BRUNSFELSIA LATIFOLIA
- 10 HYDRANGEA 'TOKYO DELIGHT'
- 4 LAGERSTROEMIA INDICA
- 15 GARDENIA 'FLORIDA' (bordering path)
- 2 LAGERSTROEMIA INDICA
- 19 GARDENIA 'FLORIDA'
- 6 HYMENOCALLIS LITTORALIS
- 4 MAGNOLIA 'LITTLE GEM'
- 9 FLECTRANTHUS ARGENTATUS
- DEMOLISH DOTTED SECTION OF EXISTING RETAINING WALL
- 3 PHORMIUM 'PURPUREUM'
- 4 LOROPETALUM 'CHINA PINK'
- 7 RADERMACHERA SINICA
- 7 PHILODENDRON 'KANADU'
- ESPALIERED CAMELLIAS
- 36 CAMELLIA SASANQUA 'MINE-NO-TURK' @ 700mm spacing
- TERRACE PLANTER
- 10 NANDINA 'GULF STREAM'
- 7 MANDEVILLEA 'PARASOL PINK'
- EXISTING TREE PROTECTION MAINTAIN LEVELS AT EXISTING IN TREE PROTECTIONS ZONE
- DRAINAGE EASEMENT 2500mm WIDE
- 10 LOROPETALUM 'CHINA PINK'
- 220 WIDE CONCRETE BLOCK BUND ON BDT
- 46 ROSMARINUS 'CHEF'S CHOICE'
- 6 CITRUS SP.
- ESPALIERED CAMELLIAS
- 12 SALVIA 'INDIGO SPIRES'
- 16 CHRYSANTHEMUM FRUTICOSUM
- 9 LAURUS NOBILIS
- 1 TRISTANIOPSIS 'LUSCIOUS'
- 6 NEOMARICA GRACILLIS
- 3 HIBISCUS 'FIJIAN WHITE'
- 2 PHORMIUM 'PURPUREA'
- 1 HIBISCUS TILEACEUS 'RUBRA'
- 4 HIBISCUS 'FIJIAN WHITE'
- 3 PHORMIUM 'PURPUREA'
- 1 HIBISCUS TILEACEUS 'RUBRA'
- 4 HIBISCUS 'FIJIAN WHITE'
- 3 PHORMIUM 'PURPUREA'
- 1 HIBISCUS TILEACEUS 'RUBRA'
- 4 HIBISCUS 'FIJIAN WHITE'
- 3 PHORMIUM 'PURPUREA'
- 1 HIBISCUS TILEACEUS 'RUBRA'
- 4 HIBISCUS 'FIJIAN WHITE'
- 3 PHORMIUM 'PURPUREA'
- 1 HIBISCUS TILEACEUS 'RUBRA'
- 2 PHORMIUM 'PURPUREUM'
- 4 GAZANIA TOMENTOSUM

BASSETT STREET

**NOTE:**  
REFER TO SHEET L03 FOR PLANTING DETAILS WESTERN PORTION OF SITE.  
REFER TO SHEET L05 FOR FULL PLANTING SCHEDULE

AMENDMENTS

High Dobson Landscape Architecture  
348 MARINE PARADE, AVALON, NSW 2107  
0408 983020  
info@highdobson.com.au

High Dobson Landscape Architecture  
Builder to check all dimensions prior to construction.  
Where any discrepancy exists between drawings and site conditions, the figured dimensions shall prevail.

CLIENT  
Thompsons Health Care

PROJECT  
AGED CARE FACILITY  
23 + 33 BASSETT STREET  
MONA VALE

DRAWING  
**PLANTING PLAN EAST**

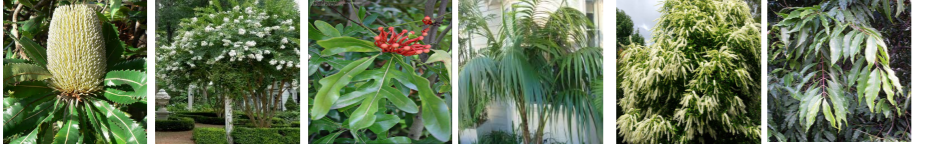
SCALE 1:100A1  
DATE 24.3.20  
ISSUE DA  
SHEET 4 OF 6

JOB  
**2003**

DWG NO.  
**DA-L04**



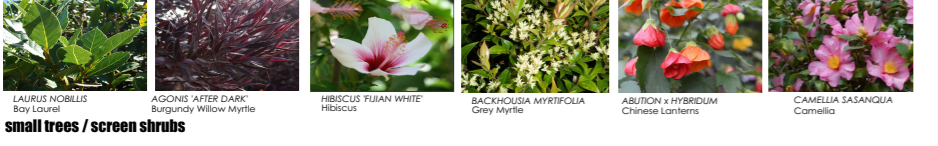
MELALEUCA LEUCADENDRON Weeping Paperbark, DELONIX REGIA Palaoia, PANDANUS TECTORIUS Screw Pine, ACMENA SMITHII Lilyplly, TRISTANOPSIS LAURINA LUSCIOUS Luscious Kanooka, SYZYGIUM LUEHMANNI Small Leaf Lillyplly



BANKSIA SERATA Old Man Banksia, LAGERSTROEMIA INDICA Crepe Myrtle, STENOCARPUS SINUATUS Queensland Firewheel Tree, HOWEA FORSTERIANA Kentia Palm, BUCKINGHAMIA CELOSSIMA Ivory Cut Tree, WATERHOLUSIA FLORIBUNDA Weeping Lillyplly



SYZYGIUM RESILIENCE Dwarf Lillyplly, ACMENA SMITHII SUBLINE Dwarf Lillyplly, MAGNOLIA LITTLE GEM Dwarf Magnolia, RADERMACHERA SINICA SUMMERSCENT Asian Bell Flower, ELEAGNUS MACROPHYLLA Russian Sage, HIBISCUS TLEACEUS RUBRA Sweet Viburnum



LAURUS NOBILIS Bay Laurel, AGONIS AFTER DARK Burgundy Willow Myrtle, HIBISCUS TIJAN WHITE Hibiscus, BACKHOUSIA MYRTIFOLIA Grey Myrtle, ABUTION X HYBRIDUM Chinese Lanterns, CAMELLIA SASANQUA Camellia



RAPHIOLEPIS X INTERMEDIA Hawthorn, SALVIA INDIGO SPIRES Blue Sage, PLECTRANTHUS MONA LAVANDER Spur Flower, HYDRANGEA MACROPHYLLA Hydrangea, PLECTRANTHUS ARGENTATUS Silver Plectranthus, BRUNSFELSA LATIFOLIA Yesterday, Today + Tomorrow



HYMENOCALLIS LITTORALIS, TBOUCHINA ALSTONVILLE Lasiandra, GARDENIA FLORIDA Dwarf Gardenia, BUXUS MICROPHYLLA JAPONICA Japanese Box, ACALYPHA WILKESIANA Coppeleaf, ELEAGNUS EBBINGEI COMPACTA Dwarf Russian Olive



CHRYSANTHEMUM FRUTESCENS Marguerite Daisy, HELICHRYSUM PETIOLARE Licorice Plant, PLUMERIA PUDICA Evergreen Frangipani, NANDINA GULF STREAM Dwarf Nandina, CARISSA MACROCARPA Desert Star, NATAL PLUM, IRESINE HERBISTE Bloodleaf



CASUARINA GREEN WAVE Dwarf She-Oak, CALLISTEMON LITTLE JOHN Dwarf Bottlebrush, CALLISTEMON VIM MACARTHUR Dwarf Red Bottlebrush, BANKSIA GIANT CANDLES Giant Candles, ROSEMARINUS CHEF'S CHOICE Tuscan Blue Rosemary, BANKSIA BIRTHDAY CANDLES Birthday Candles



GREVILLEA MOONLIGHT Moonlight Grevillea, GREVILLEA HONEY GEM Golden Grevillea, GREVILLEA MISTY PINK Pink Grevillea, GREVILLEA PEACHES & CREAM Peaches & Cream Grevillea, GREVILLEA CRIMSON VILLET Crimson Spider Flower



RAPHIS EXCELSA Lady Palm, Raphis, CORDYLINE RUBRA Burgundy Palm Lily, SPATHIPHYLLUM SENSATION Giant Peace Lily, HYMENOCALLIS LITTORALIS Spider Flower, CANINA TROPICANA Tropicana Lily, ZAMOCULCAS ZAMIFOLIA Zambar Gem, Z-Z Plant



XANTHORRHOEA AUSTRALIS Grass Tree, RESTIO TETRAPHYLLUM Tassel Cord Rush, ALCANTERA IMPERIALIS Alcantera, CORDYLINE PINK DIAMOND Pink Diamond, ARTHROPODIUM CIRCATUM New Zealand Rock Lily, ALPINA ZERULUM VARIEGATA Variegated Ginger



TRACHELOSPERMUM FLAT MAT Compact Asian Jasmine, GAZANIA TOMENTOSA Silver Gazania, MYOPORUM YAREENA Creeping Boobiala, ZOYSIA TENUIFOLIA Temple Grass, MANDEVILLEA SUNSET PINK Pink Mandevilla, MAZUS REPTANS Fairy Dust

# PLANTING SCHEDULE - GROUND FLOOR

SPECIES HAVE BEEN SELECTED ON THE BASIS OF DESIGN INTENT AND SUITABILITY TO SITE COASTAL + FLOOD PRONE CONDITIONS. SHRUB AND FOLIAGE PLANTS HAVE BEEN SELECTED TO PROVIDE STIMULATING VARIETY OF SEASONAL COLOUR AND FLOWER AND INCLUDE NATIVES SPECIES AND NOSTALGIC / EXOTIC FLOWERING SHRUBS. SUB-TROPICAL SPECIES HAVE BEEN PROPOSED TO PROVIDE VARIATION OF FOLIAGE AND FOR SHADE TOLERANT CHARACTERISTICS PARTICULARLY IN COURTYARD PLANTERS.

Table with columns: KEY, BOTANICAL NAME, COMMON NAME, MATURE HT, No., POT SIZE, COMMENTS. Includes sections for GROUND LEVEL PLANTING, ANOFA TREES, SMALL FEATURE TREES, SHRUBS, GRASSES, ACCENTS + LILIES, CLIMBERS, GROUNDCOVERS + PERENNIALS.

# GENERAL SPECIFICATIONS

LANDSCAPE HARDWORKS DEMOLITION, BULK EARTHWORKS, MASONRY RETAINING WALLS, PLANTER BOXES, TILED TERRACES, STEPS, IN SITU CONCRETE, DRAINAGE, WATERPROOFING, FENCING, TREE REMOVAL AND ALL SITE CONSTRUCTION INDICATED SHALL BE EXECUTED BY BUILDER IN ACCORDANCE WITH ARCHITECTURAL + ENGINEERING SPECIFICATIONS.

LANDSCAPE WORKS SHALL GENERALLY BE UNDERTAKEN IN ACCORDANCE WITH COUNCIL APPROVED PLANS AND SHALL BE COMPLIANT WITH AS4670-2006 Protection of trees on development sites, AS4773-2007 Planning of amenity trees, AS4454-2012 Composites, soil conditioners and mulches, AS13-2003 Potting mixes, AS2303-2018 Free stock for landscape use.

ALL LANDSCAPE WORKS SHALL BE EXECUTED BY A COMPETENT LANDSCAPE CONTRACTOR EXPERIENCED IN HORTICULTURAL PRACTICE AND LANDSCAPE CONSTRUCTION. IRRIGATION WORKS SHALL BE EXECUTED BY A CONTRACTOR SATISFABLY QUALIFIED AND LICENSED.

TREE PROTECTION TREE PROTECTION SHALL BE INSTALLED PRIOR TO COMMENCEMENT OF WORKS AROUND EXISTING TREES TO BE RETAINED IN ACCORDANCE WITH ARBORICULTURAL REPORT BY URBAN FORESTRY AUSTRALIA. CARE SHALL BE TAKEN WHEN REMOVING COUNCIL APPROVED TREES AND PLANTING WITHIN 12m x 90m NOT TO DAMAGE ROOTS OR CANOPIES OF TREES TO BE RETAINED.

SOIL PREPARATION + PLANTING SOILS PLANTING BEDS SHALL BE PREPARED IN ACCORDANCE WITH DETAILS THE FOLLOWING SPECIFICATIONS APPLY GENERALLY TO DISTURBED AREAS OF THE SITE WHERE EXCAVATION FOR CONSTRUCTION REQUIRES REINSTATEMENT OF LEVELS USING IMPORTED SOILS.

IMPORTED SOILS STANDARD TOPSOIL SANDY LOAM TO CLAY LOAM MIX DESIGNED FOR GENERAL PURPOSE ON-GRADE GARDEN BED PLANTING WITH A HIGH NUTRIENT REQUIREMENT FOR SUSTAINED OPTIMUM GROWTH. USE LOW 'P' OPTIONS FOR NATIVE PLANTS AREAS.

ON-SLAB SUBSOIL INCLUDING PLANTER BOXES OPEN GRANULAR WELL-DRAINED GROWING MEDIA WITH ALL-UP SATURATED DENSITY OF LESS THAN 2400 KG/M3 FOR USE AT DEPTH IN ALL ON-SLAB INSTALLATIONS. GENERALLY THE SOIL MUST BE FREE OF 'UNWANTED MATERIAL' AND MUST COMPLY WITH AS 3743.

IMPROVED SITE SOILS FOR PLANTING BEDS WHERE EXISTING SITE SOIL HAS BEEN RETAINED AT OR NEAR FINISHED LEVELS IMPROVED SITE SOIL SHALL BE USED FOR PLANTING. SITE SOIL TO A DEPTH OF 300mm SHALL BE AMENDED USING 10% GREEN LIFE MULCH CULTIVATED INTO SITE SOIL.

GENERAL NOTES DO NOT INTRODUCE ORGANIC MATTER LOWER THAN 400mm, BACKFILL AT DEPTH WITH SUBSOIL. ONLY CONTRACTOR SHALL UNDERTAKE pH TESTS AND ADJUST WHERE NECESSARY TO ACHIEVE A pH WITHIN THE 5.5 - 7.5 RANGE. MIX IN GYPSUM AT MANUFACTURER'S RECOMMENDED RATES IF CLAY SOIL ENCOUNTERED.

MASONRY PLANTER BOXES ON-SLAB MASONRY PLANTER BOXES SHALL BE CONSTRUCTED AND SHALL PROVIDE FOR ADEQUATE SOIL DEPTH FOR PLANTING (MINIMUM 1M DEEP FOR TREES). PLANTERS SHALL BE CONSTRUCTED, DRAINED, WATERPROOFED AND CERTIFIED IN ACCORDANCE WITH ENGINEER'S SPECIFICATIONS TO FUTURE DETAILED DESIGN.

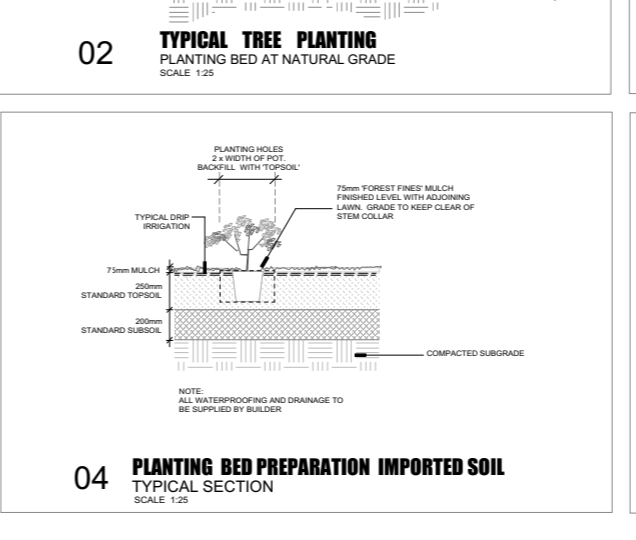
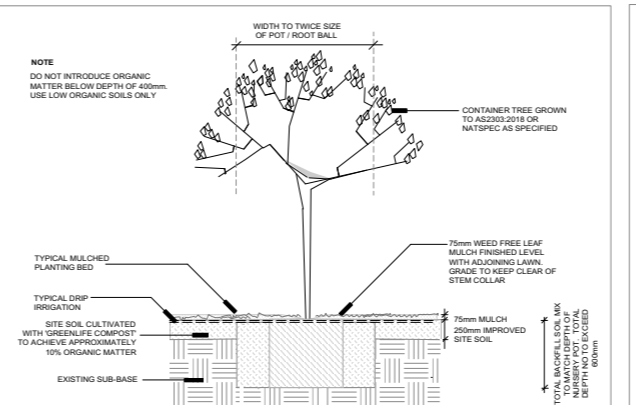
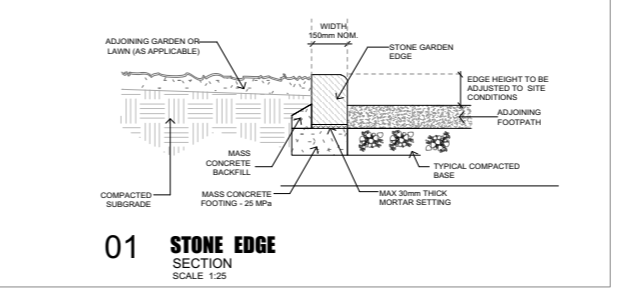
PLANTING ALL PLANTS SHALL BE WELL GROWN AND DISEASE FREE. PLANTING SHALL BE IN ACCORDANCE WITH PLANTING SCHEDULE. TREES SHALL BE GROWN TO AS2303-2018 OR NATSPEC. SUPPLY IN ACCORDANCE WITH PLANTING SCHEDULE. TREES SHALL BE VIGOROUS, WELL ESTABLISHED, FREE OF DISEASE AND PESTS, HARDENED OFF, TRUE TO FORM, AND GROWN IN THEIR FINAL CONTAINERS FOR NOT LESS THAN 12 WEEKS. TREES SHALL HAVE A SINGLE LEADING SHOOT AND POTS FREE FROM WEEDS.

MULCH COVER PLANTING AREAS WITH 75mm 'FOREST FINES' MULCH. ENSURE MULCH IS FREE OF WEED SEED AND VEGETATIVE MATERIAL. KEEP CLEAR FROM PLANT STEM COLLARS.

LAWN TURF SHALL BE SIR WALTER BUFFALO. TURF ROLLS SHALL BE A MINIMUM OF 25mm THICK SUPPLIED FROM A SPECIALIST GROWER OR CULTIVATED TURF TURF SHALL BE CORRUPTURE MAT THICKNESS, FREE FROM WEEDS. LAY ON MINIMUM 150mm COMMERCIAL QUALITY SANDY LOAM TURF UNDERLAY.

WEED ERADICATION ALL WEED SPECIES SHALL BE REMOVED FROM SITE IN ACCORDANCE WITH BIOSCIENCE ACT 2015 USING NON-CHEMICAL PRACTICES WHEREVER POSSIBLE. ALL VEGETATIVE WEED MATERIAL SHALL BE SUITABLY DISPOSED OFF SITE AND FOLLOW UP REMOVAL OR RE-EMERGING WEED MATERIAL SHALL BE UNDERTAKEN ON AN 'AS NEEDED' BASIS.

IRRIGATION A WATER BOARD APPROVED, FULLY AUTOMATIC SYSTEM SHALL BE INSTALLED TO ALL GARDEN BEDS AND PLANTERS. SYSTEM DESIGN TO FUTURE DETAILED DESIGN.



# PLANTING SCHEDULE ON-SLAB TERRACE PLANTERS + COURTYARDS

COURTYARDS + GROUND FLOOR TERRACE PLANTER

Table for Dining Room Internal Courtyard - Deep Soil Planting. Columns: Botanical Name, Common Name, Mature HT, No., Pot Size, Comments. Includes plants like Begonia rex, Alcantera imperialis, and others.

Table for Internal Water Feature Courtyard. Columns: Botanical Name, Common Name, Mature HT, No., Pot Size, Comments. Includes plants like Acanthus mollis, Cyrtanthus excelsa, and others.

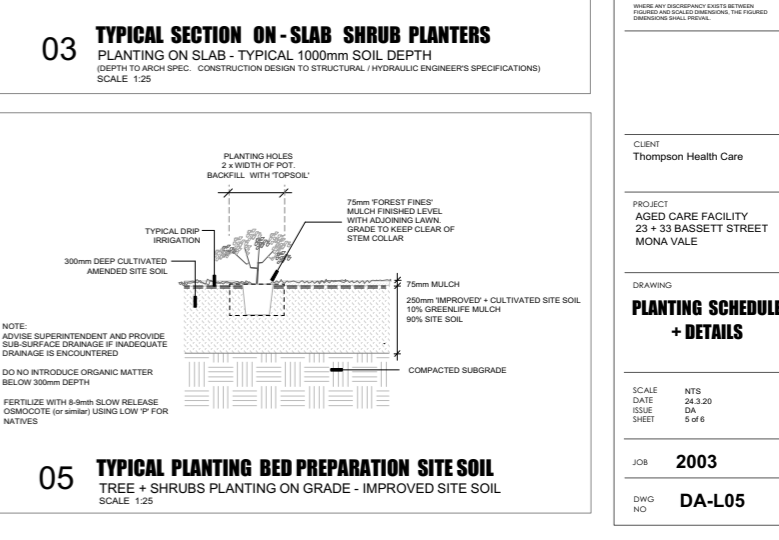
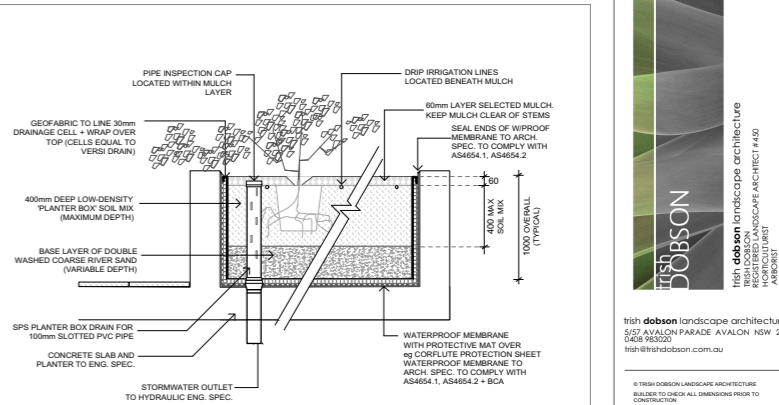
Table for Lobby Atrium Lounge. Columns: Botanical Name, Common Name, Mature HT, No., Pot Size, Comments. Includes plants like Howea forsteriana and Zamoculcas zamifolia.

Table for Staff Court - Basement Level. Columns: Botanical Name, Common Name, Mature HT, No., Pot Size, Comments. Includes plants like Kentia palm and Rojo Congo.

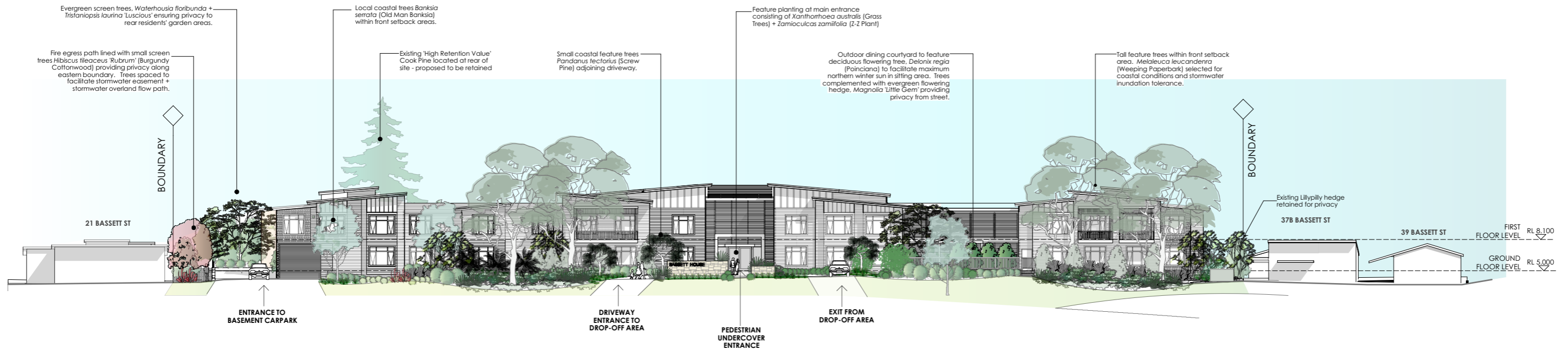
Table for Ground Floor Terraces - Southern Garden. Columns: Botanical Name, Common Name, Mature HT, No., Pot Size, Comments. Includes plants like Doryanthes excelsa and Nandina Gulf Stream.

Table for First Floor Planter. Columns: Botanical Name, Common Name, Mature HT, No., Pot Size, Comments. Includes plants like Cycas revoluta, Emerald Star, and Raphiolepis Oriental Pearl.

NOTE REFER TO SHEET L03 FOR DETAILED PLANTING PLAN

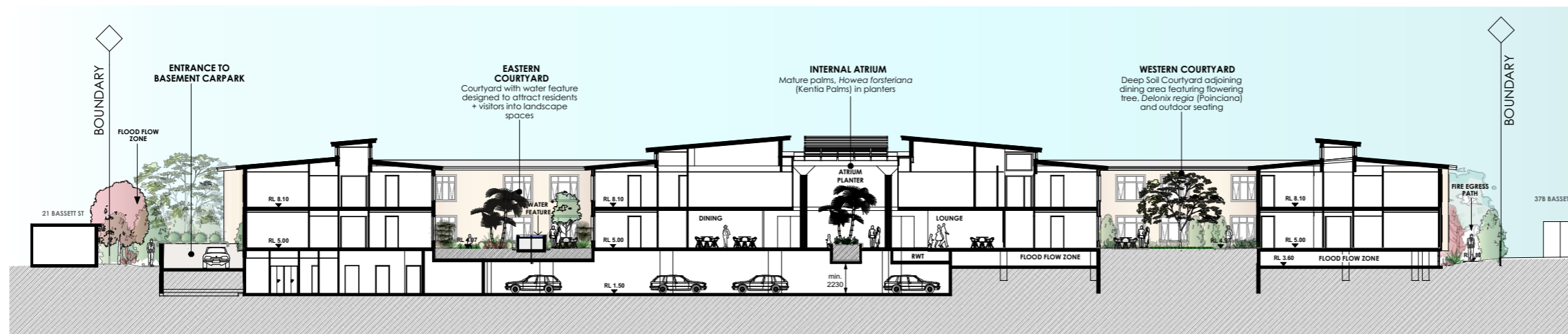


CLIENT: Thomason Health Care. PROJECT: AGED CARE FACILITY 23 + 33 BASSETT STREET MONA VALE. DRAWING: PLANTING SCHEDULE + DETAILS. SCALE: NTS, DATE: 28.2.20, SHEET: 14 of 6. JOB: 2003, DWG NO: DA-L05.



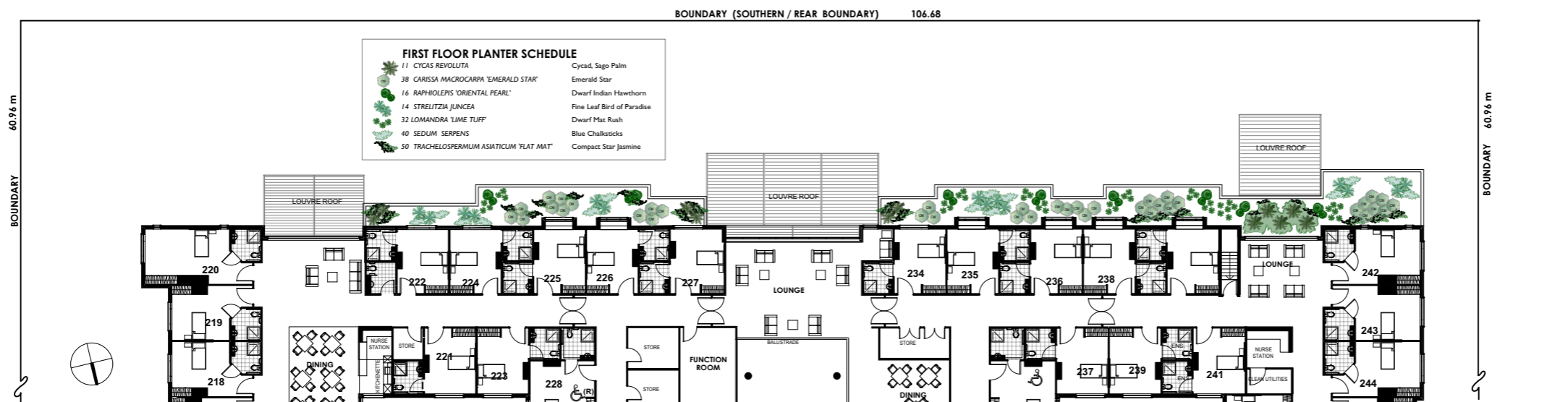
**BASSETT STREET FRONT ELEVATION (NORTH)**

SCALE 1:200 @ A1



**LONG SECTION THROUGH SITE**

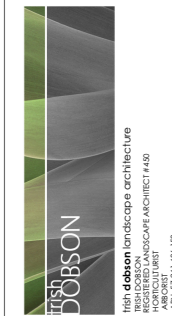
SCALE 1:200 @ A1



**PLANTING PLAN - FIRST FLOOR PLANTERS**

PLAN SHOWS REAR (SOUTHERN) PORTION OF SITE  
SCALE 1:200 @ A1

AMENDMENTS



Irish dobson landscape architecture  
348 HAWKING PARADE, AVALON, NSW 2107  
0428 983002  
iris@irishdobson.com.au

© IRISH DOBSON LANDSCAPE ARCHITECTURE  
BUILDING TO ORDER ALL DIMENSIONS PRIOR TO  
CONSTRUCTION  
WHERE ANY DISCREPANCY EXISTS BETWEEN  
FIGURES AND SCALED DIMENSIONS, THE FIGURED  
DIMENSIONS SHALL PREVAIL.

CLIENT  
Thompsons Health Care

PROJECT  
AGED CARE FACILITY  
23 + 33 BASSETT ST  
MONA VALE

DRAWING  
**ELEVATION  
SECTION  
FIRST FLOOR PLANTER**

SCALE 1:200@A1  
DATE 24.3.20  
ISSUE DA  
SHEET 8 of 8

JOB **2003**

DWG NO **DA-L06**