

## LANDSCAPE DEVELOPMENT APPLICATION PLANS

### COUNCIL REQUIREMENTS - NORTHERN BEACHES COUNCIL

THE LANDSCAPE PLAN IS IN GENERAL ACCORDANCE WITH COUNCIL PLANNING CONTROLS:  
 • PITTWATER DEVELOPMENT CONTROL PLAN  
 • PITTWATER LOCAL ENVIRONMENTAL PLAN 2014  
 • PITTWATER NATIVE GARDENING BOOKLET - PART 5 - ROLLING HILLS 7 LOWER SHALE SLOPES  
 • APARTMENT DESIGN GUIDELINES (ADG) 2015

### CONTROLS

CANOPY TREES REQUIRED TO BE NATIVE SPECIES:  
 COUNCIL CONTROL = 100%  
 PROPOSED = 100%

ALL OTHER PLANTS REQUIRED TO BE NATIVE SPECIES:  
 COUNCIL CONTROL = 50%

ALL OTHER PROPOSED AUSTRALIAN NATIVE SPECIES = 17 / 24  
 70% OF ALL OTHER TOTAL PROPOSED PLANT SPECIES

ALL OTHER PROPOSED AUSTRALIAN NATIVES  
 BY QUANTITY - 3687 / 4644  
 79.4% OF ALL OTHER PROPOSED QUANTITY

LANDSCAPE AREA / DEEP SOIL REQUIREMENTS:  
 REFER TO ARCHITECTS DRAWINGS

ARBOCULTURAL ASSESSMENT  
 REFER TO ARBOCULTURAL IMPACT ASSESSMENT REPORT PREPARED BY  
 'EZI GROW' CONSULTANTS

### LANDSCAPE INSTALLATION SPECIFICATION

#### PLANTER BEDS

- Minimum soil depths and volume for planting on any structure as per ADG:
- Large Trees (2-18m High): 1200mm / 150m<sup>3</sup>
- Medium Trees (8-12m High): 1000mm / 35m<sup>3</sup>
- Small Trees (6-8m High): 800mm / 9m<sup>3</sup>
- Shrubs: 500 - 600mm
- Groundcovers: 300 - 450mm
- Turf: 200mm

- Suitable drainage implemented through use of ag lines, drainage flow cell and geotech fabric.
- Soil to be ANL Planter Box Mix, or equivalent. Blend of soil, coarse sand, graded ash, nepean sand, composted sawdust, botany humus and composted pine bark.
- Soil to be between 20-50mm below top of retaining wall height to allow for drapping.

#### TURFING

- Turf to be laid on minimum 100mm turf underlay.
- Turf underlay to be ANL Sand / Soil Blend, or equivalent.
- Turf to be Sir Walter Turf - Premium Buffalo Grass (Registered PBR), supplied by President Turf, or equivalent.

#### MULCHING

- Place mulch to minimum depth of 75mm, clear of plant stems, and rake to an even surface flush with the surrounding finished levels and consistent in depth.
- Trees in lawn areas to have 750mm diameter of mulch surrounding.
- Mulch for general garden areas, pots, and planters to be Australian Native Landscapes (ANL) Greenlife Mulch and Compost, or equivalent.

#### TREE PLANTING

- Excavate holes in accordance with dimension of container. The depth of the holes is to be equivalent to the container height plus 100mm and the width of the hole is to be twice that of the container.
- Locate tree to centre of hole and backfill with soil. Firm about root ball.
- All plant material, 45 Litres or over, to be staked.

#### IRRIGATION

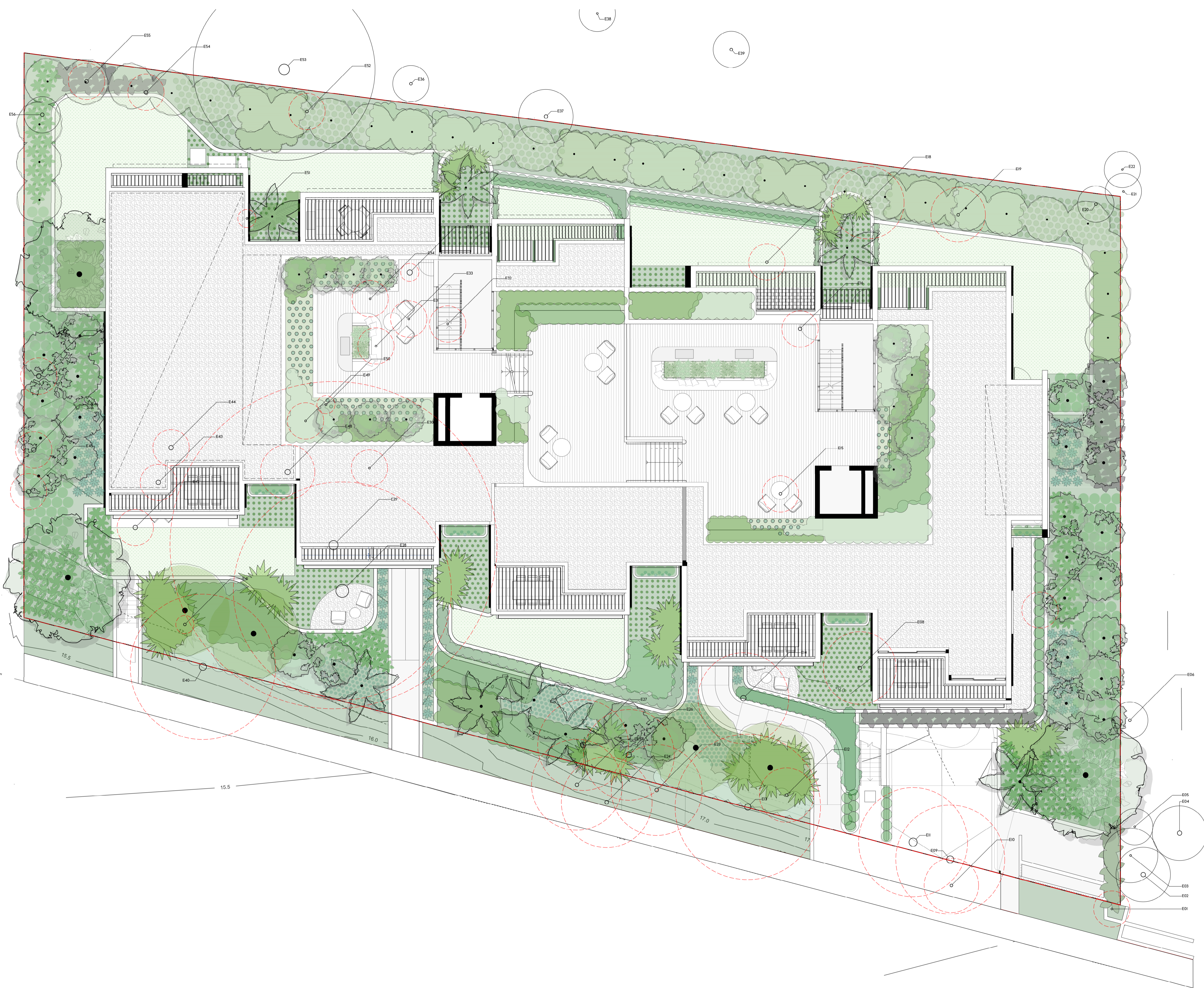
- Automated irrigation system to be implemented. Reputable irrigation brands are to be sourced.
- Use drip lines with emitters at 300mm spacing's for all garden beds.
- Use pop-up spray heads for all lawn areas. Pop-up spray heads are to be spaced according to product specification.
- Conceal irrigation below the mulch layer in planting areas and 150mm below the surface of turf areas. Conceal all components including pipework, fittings, valves, and control equipment.

## EXISTING TREE SCHEDULE

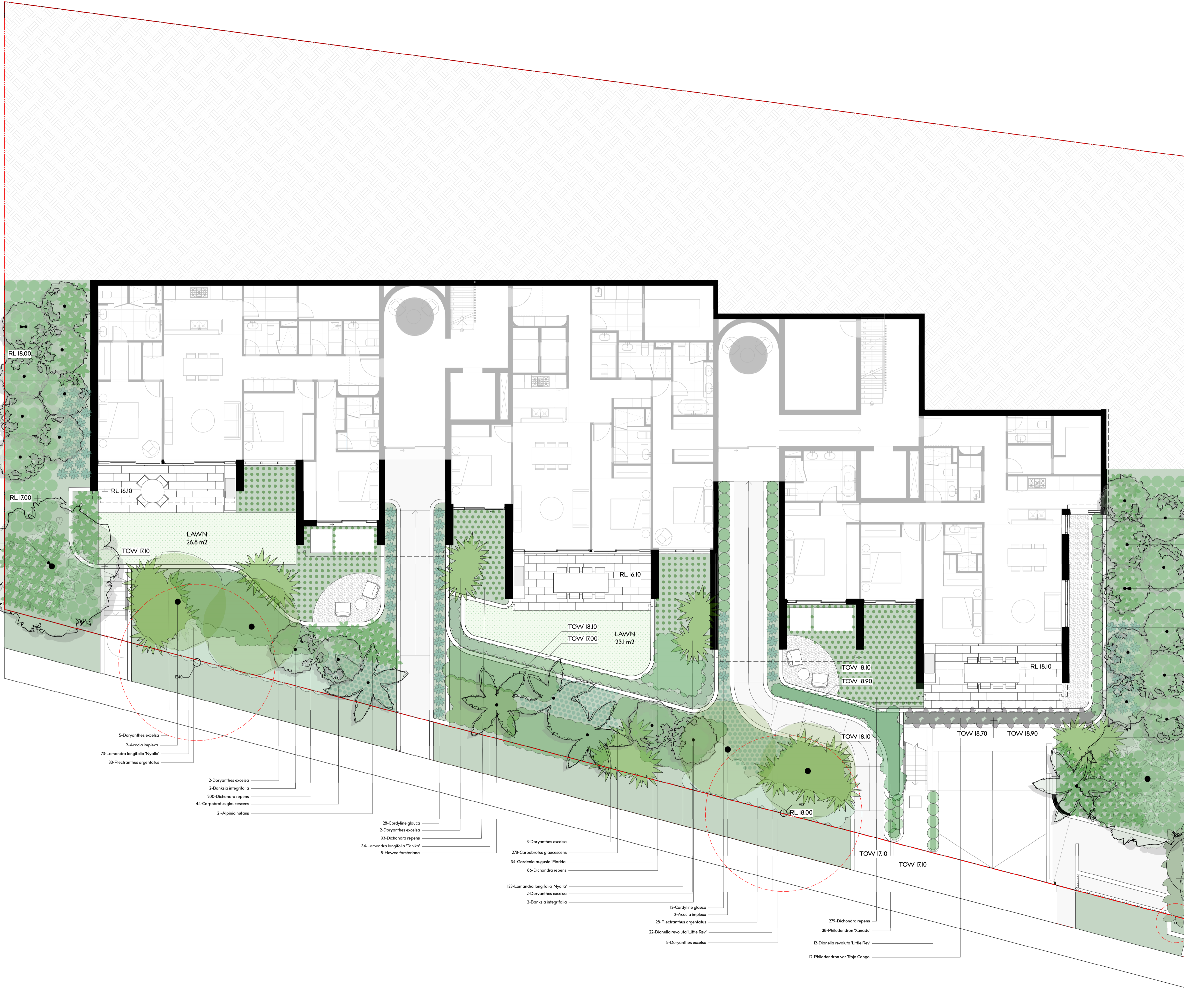
TREE NO.	GENUS SPECIES	HEIGHT	CANOPY	CALLIPER	ACTION/COMMENT
E01	Ligustrum sp.	2000	2000	100	Remove
E02	Syagrus romanzoffiana	8000	3000	250	Retain
E03	Syzygium sp.	5000	3000	100	Retain
E04	Archontophoenix alexandrae	9000	3000	250	Retain
E05	Syzygium sp.	5000	2000	100	Retain
E06	Archontophoenix alexandrae	6000	2000	150	Retain
E07	Unknown vines	2000	2000	0	Remove
E08	Callistemon sp.	5000	4000	200	Remove
E09	Eucalyptus capitellata	15000	6000	400	Remove
E10	Angophora costata	5000	3000	150	Remove
E11	Eucalyptus capitellata	15000	6000	450	Remove
E12	Cinnamomum camphora	4000	3000	150	Remove
E13	Eucalyptus capitellata	15000	8000	350	Remove
E14	Lagerstroemia indica	5000	5000	300	Remove
E15	Murraya paniculata	3000	2000	150	Remove
E16	Waterhousia floribunda	4000	2000	200	Remove
E17	Hibiscus sp.	2000	2000	150	Remove
E18	Letospermum petersonii	6000	4000	250	Remove
E19	Letospermum petersonii	5000	3000	150	Remove
E20	Waterhousia floribunda	5000	2000	150	Retain
E21	Archontophoenix alexandrae	6000	2000	100	Retain
E22	Archontophoenix alexandrae	6000	2000	100	Retain
E23	Acacia falcata	16000	5000	200	Remove
E24	Acacia falcata	16000	5000	200	Remove
E25	Acacia falcata	16000	5000	200	Remove
E26	Acacia falcata	16000	5000	300	Remove
E27	Acacia falcata	16000	5000	300	Remove
E28	Eucalyptus paniculata	24000	12000	700	Remove
E29	Syncarpia glomulifera	20000	18000	500	Remove
E30	Howea forsteriana	3000	2000	100	Remove
E31	Howea forsteriana	3000	2000	100	Remove
E32	Archontophoenix alexandrae	5000	2000	100	Remove
E33	Archontophoenix alexandrae	5000	2000	100	Remove
E34	Yucca sp.	14000	2000	100	Remove
E35	Archontophoenix alexandrae	3000	1000	300	Remove
E36	Archontophoenix alexandrae	5000	2000	150	Retain
E37	Syzygium sp.	5000	3000	200	Retain
E38	Archontophoenix alexandrae	4000	2000	100	Retain
E39	Archontophoenix alexandrae	8000	2000	150	Retain
E40	Melaleuca quinquenervia	10000	8000	400	Remove
E41	Callistemon sp.	1000	1000	150	Remove
E42	Syagrus romanzoffiana	3000	2000	250	Remove
E43	Syagrus romanzoffiana	10000	2000	250	Remove
E44	Syagrus romanzoffiana	8000	2000	250	Remove
E45	Syagrus romanzoffiana	8000	2000	250	Remove
E46	Syagrus romanzoffiana	8000	2000	250	Remove
E47	Syagrus romanzoffiana	8000	2000	250	Remove
E48	Washingtonia robusta	3000	3000	300	Remove
E49	Dracaena marginata	4000	2000	100	Remove
E50	Dracaena marginata	4000	1000	100	Remove
E51	Dyopsis lutescens	4000	1000	100	Remove
E52	Dyopsis decaryi	4000	2000	150	Remove
E53	Syncarpia glomulifera	14000	10000	600	Retain
E54	Syagrus romanzoffiana	6000	2000	200	Remove
E55	Syagrus romanzoffiana	8000	2000	200	Remove
E56	Archontophoenix alexandrae	7000	2000	200	Retain

ID	QTY	BOTANICAL NAME	COMMON NAME	SCHEDULED SIZE	MATURE SPREAD	MATURE HEIGHT	REMARKS
<b>Trees</b>							
Ai	4	Acacia implexa	Hickory Wattle	100 Ltr	5.0-7.0m	7.0-8.0m	Native
Anc	3	Melaleuca quinquenervia	Paperbark	200 Ltr	3.5 - 6m	25 - 30m	Native
Bl-1	39	Banksia integrifolia	Coastal Banksia	100 Ltr	3.5 - 6m	5 - 10m	Native
<b>Palms - Cycads</b>							
Hf-1	8	Howea forsteriana	Kentia Palm	45 Ltr	3.5 - 6m	5 - 10m	Native
<b>Shrubs</b>							
Gf	74	Gardenia augusta 'Florida'	Gardenia	200 mm	0.5 - 0.6m	0.5 - 0.6m	
Pa-4	71	Plectranthus argentatus	Silver plectranthus	140 mm	1 - 1.5m	0.8 - 1.0m	Native
Pam	140	Plectranthus 'Mona Lavender'	Mona lavender	140 mm	1 - 2m	0.5 - 0.8m	
SsR	33	Syzygium smithii 'Red Tip'	Lilly Pilly	45 Ltr	2.0-3.0m	3.0 - 5.0m	Native
Wff	221	Westringia fruticosa	Coastal Rosemary	140 mm	2.0 - 4.0 m	1.5 - 2.0 m	Native
<b>Perennials</b>							
An	183	Alpinia nutans	Native Cardamom	140mm	1 - 1.5m	1 - 1.5m	
Cam	5	Alocasia brisbanensis	Giant Elephant's Ear	300 mm	1 - 1.5m	1 - 1.5m	Native
Deg	33	Doryanthes excelsa	Gymea Lily	400 mm	1.5 - 2.0 m	1.5 - 3.0 m	Native
Ms	40	Mentha australis	Australian Mint	200 mm	0.5 - 0.6m	0.5 - 0.6m	Native
Prc	43	Philodendron var 'Red Congo'	Philodendron	200mm	0.8 - 1m	0.8 - 1m	
Px	38	Philodendron 'Xanadu'	Philodendron	200 mm	0.8 - 1m	1 - 1.2m	
<b>Grasses</b>							
Drl	358	Dianella revoluta 'Little Rev'	Dianella Revoluta	200 mm	0.3 - 0.4 m	0.3 - 0.4 m	Native
LIn	415	Lomandra longifolia 'Nyalla'	Spiny-headed mat rush	140 mm	0.8 - 0.9 m	0.8 - 0.9 m	Native
Llt	556	Lomandra longifolia 'Tanika'	Spiny-headed mat rush	140 mm	0.6 - 0.65 m	0.5 - 0.6 m	Native
Msa	153	Miscanthus sinensis 'Adagio'	Dwarf Maiden Grass	140mm	0.4 - 0.6m	0.5 - 0.6m	Native
<b>Groundcovers</b>							
Cg-3	723	Carpobrotus glaucescens	Pigface	140 mm	1.2 - 2.0m	0.0 - 0.3m	Native
Dr	1012	Dichondra repens	Kidney Weed	140 mm	0.9 - 1.2m	0.0 - 0.3m	Native
Gr	88	Gardenia radicans	Creeping Gardenia	140mm	1 - 1.5m	0.4 - 0.5m	
Ta	407	Trachelospermum asiaticum	Japanese star jasmine	140 mm	0.5 - 1m	0.3 - 0.4m	
<b>Climbers</b>							
Ppj	13	Pandorea jasminoides	Slender Bells	300 mm	0.6 - 2.0 m	2.0 - 3.0 m	Native
<b>Total:</b>	<b>4660</b>						









GROVE OF BANKSIA TREES FOR VARIED TREE CANOPY

RL 18.00

- 65-Alpinia nutans
- 116-Dianella revoluta 'Little Rev'
- 23-Cordyline glauca
- 8-Banksia integrifolia

RL 17.00

RL 16.10

TOW 17.10

LAWN  
26.8 m²

RL 16.10

TOW 18.10

TOW 17.00

LAWN  
23.1 m²

TOW 18.10

TOW 18.90

RL 18.10

TOW 18.70

TOW 18.90

TOW 18.10

TOW 17.10

TOW 17.10

RL 18.10

RL 18.10

RL 18.10

RL 18.10

RL 18.10

RL 18.10

RL 18.10

RL 18.10

RL 18.10

RL 18.10

RL 18.10

RL 18.10

RL 18.10

RL 18.10

RL 18.10

RL 18.10

RL 18.10

RL 18.10

RL 18.10

PROPOSED MELALEUCA QUINQUENEVIA TO EXTEND EXISTING CANOPY ALONG STREET

- 1-Melaleuca quinquenevia

- 5-Doryanthes esecula
- 2-Acacia implexa
- 73-Lomandra longifolia 'Nyala'
- 33-Plectranthus argentatus

- 2-Doryanthes esecula
- 2-Banksia integrifolia
- 200-Dichondra repens
- 144-Carpobrotus glaucescens
- 2-Alpinia nutans

- 28-Cordyline glauca
- 2-Doryanthes esecula
- 103-Dichondra repens
- 34-Lomandra longifolia 'Tanika'
- 5-Hovea forsteriana

- 3-Doryanthes esecula
- 278-Carpobrotus glaucescens
- 34-Gardenia augusta 'Florida'
- 86-Dichondra repens
- 123-Lomandra longifolia 'Nyala'
- 2-Doryanthes esecula
- 2-Banksia integrifolia

- 12-Cordyline glauca
- 2-Acacia implexa
- 28-Plectranthus argentatus
- 22-Dianella revoluta 'Little Rev'
- 5-Doryanthes esecula

- 279-Dichondra repens
- 38-Philodendron 'Kanadi'
- 12-Dianella revoluta 'Little Rev'
- 12-Philodendron var 'Rejo Congo'

136-Dianella revoluta 'Little Rev'

17-Dianella revoluta 'Little Rev'

5-Banksia integrifolia

GROVE OF BANKSIA TREES FOR VARIED TREE CANOPY

23-Cordyline glauca

5-Banksia integrifolia

3-Doryanthes esecula

1-Melaleuca quinquenevia

67-Alpinia nutans

5-Acacia brisbanensis

E03

E02

E01

TOW 16.92



