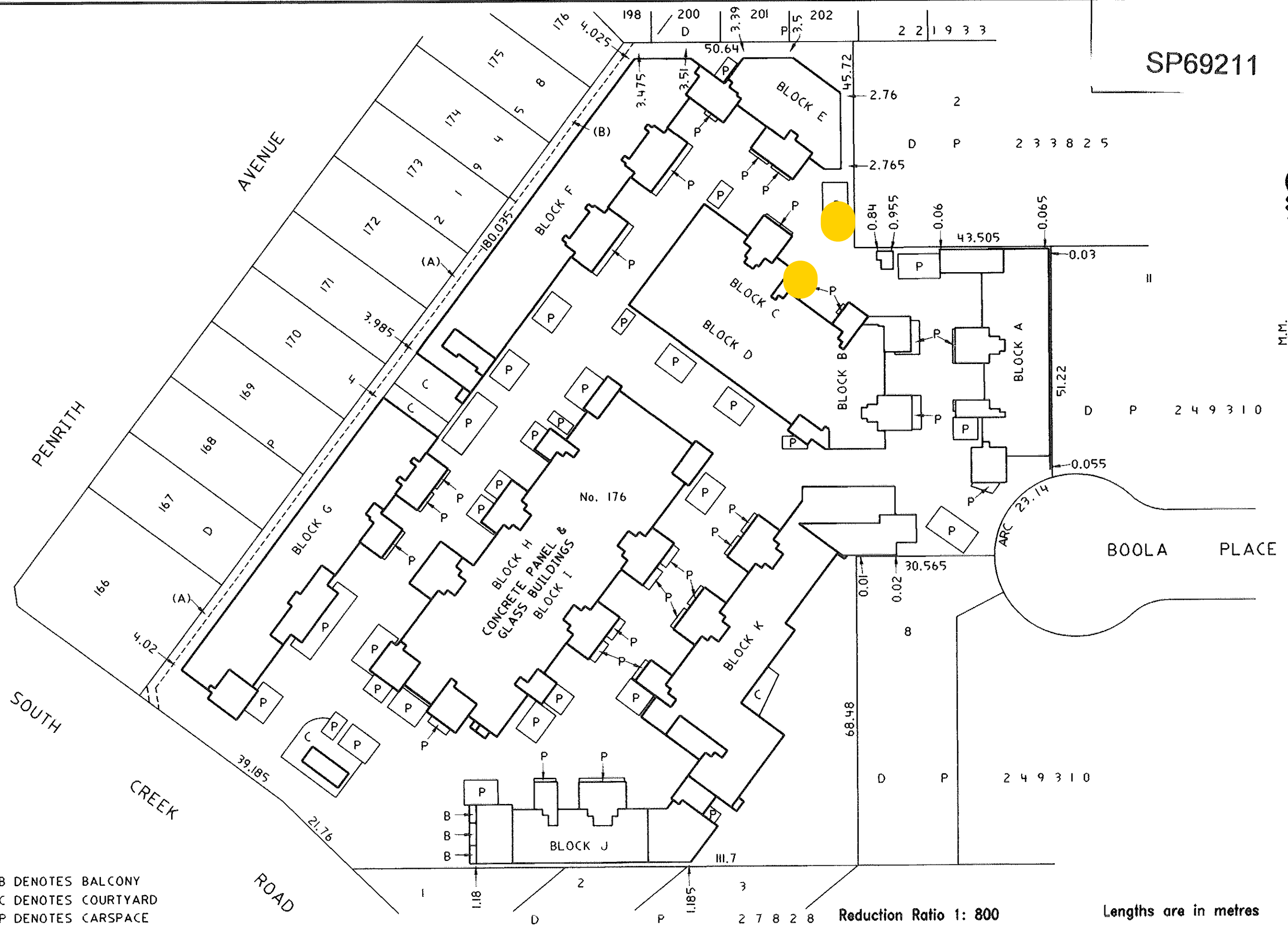


SP69211



B DENOTES BALCONY  
 C DENOTES COURTYARD  
 P DENOTES CARSPACE

(A) EASEMENT TO DRAIN WATER 1.83 WIDE (DP233825)  
 (B) EASEMENT TO DRAIN WATER 1.83 WIDE (7430907)

### LOCATION PLAN

Reduction Ratio 1: 800

Lengths are in metres

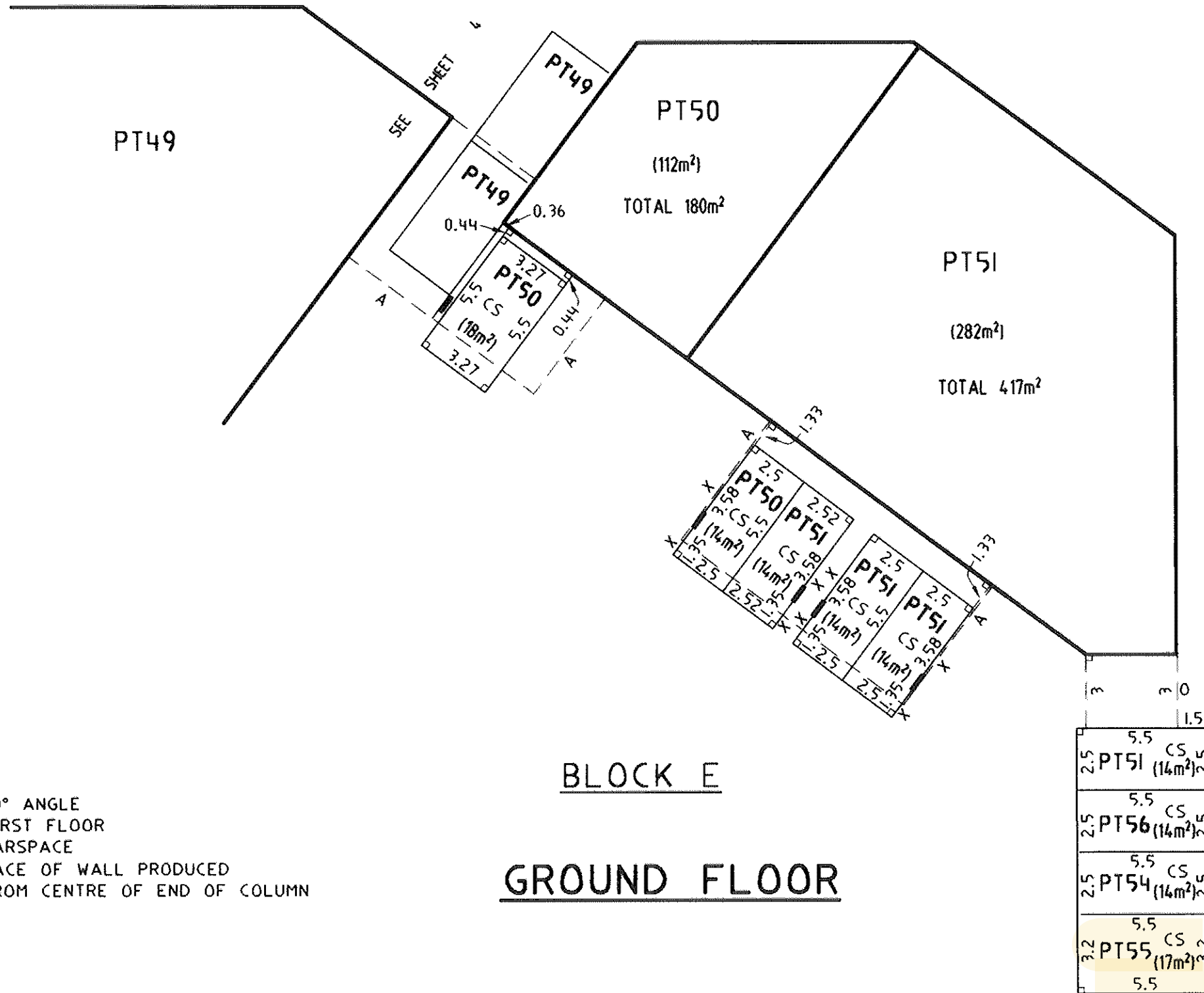
*D Fairlie*  
 Registered Surveyor

*A. Calenos.*  
 Authorised Person/General Manager/Accredited Certifier

SURVEYOR'S REFERENCE: 7199/SP2(H)

Reg:R22424272 /Doc:SP 0069211 P /Rev:07-Nov-2002 /NSW IRS /Pgs:ALL /Prt:29-Jul-2022 13:07 /seq:2 of 12  
 © Office of the Registrar-General /Src:Hzlett /Ref:NOVP-MILOS-4345

SP69211



- ⊥ DENOTES 90° ANGLE
- A DENOTES FIRST FLOOR
- CS DENOTES CARSPACE
- O DENOTES FACE OF WALL PRODUCED
- X DENOTES FROM CENTRE OF END OF COLUMN

BLOCK E  
GROUND FLOOR

THE AREAS SHOWN ARE FOR THE PURPOSE OF THE STRATA TITLES ACT ONLY AND ARE APPROXIMATE.

CARSPACES WHERE NOT COVERED ARE LIMITED IN HEIGHT TO 2.5 ABOVE THE UPPER SURFACE OF THEIR RESPECTIVE CONCRETE FLOORS.

Reduction Ratio 1: 200

Lengths are in metres

*D. Faistie*  
Surveyor Registered

*A. Xenos*  
Authorised Person/General Manager/Accredited Certifier

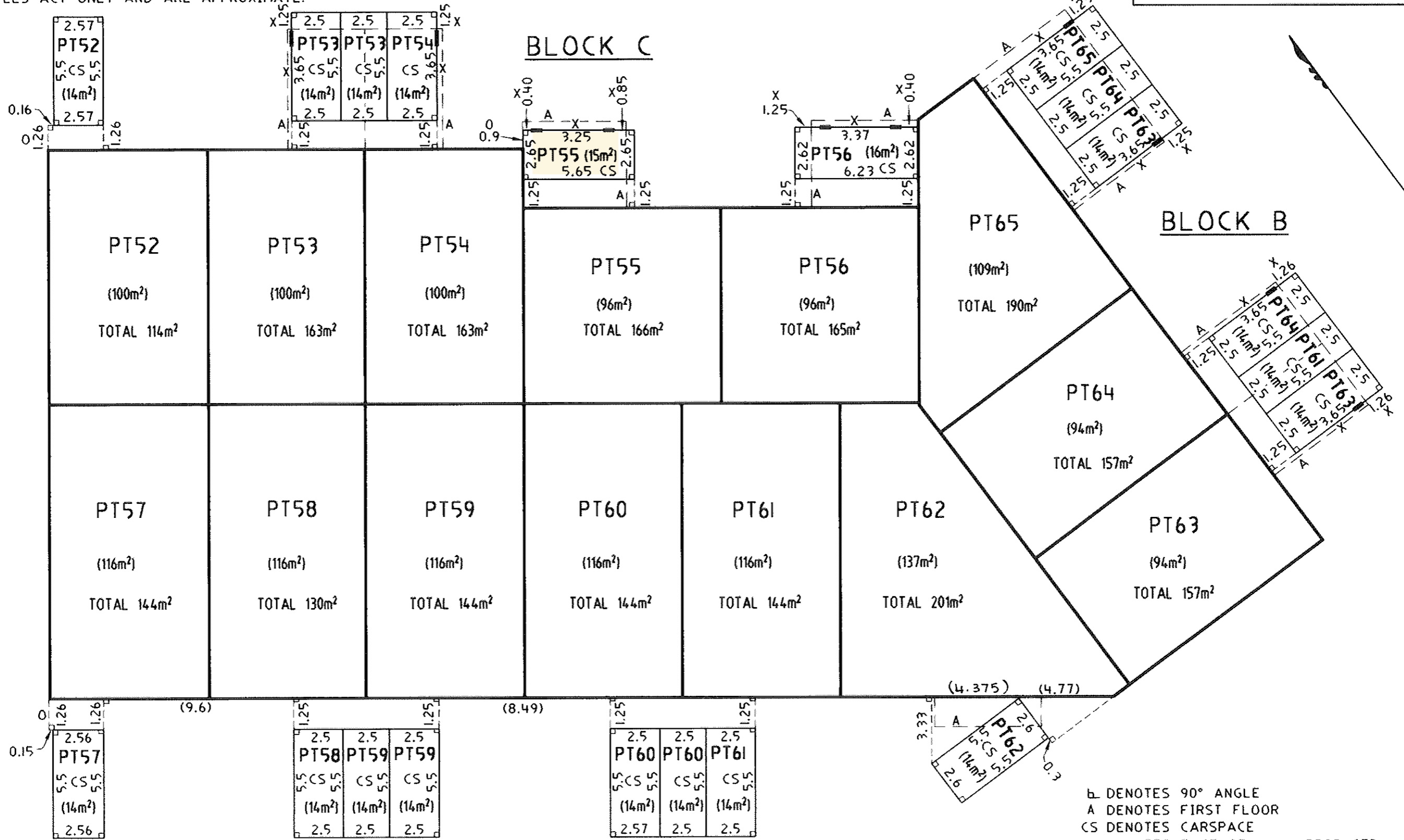
SURVEYOR'S REFERENCE: 7199/SP2(H)

Reg: R224272 / Doc: SP 0069211 P / Rev: 07-Nov-2002 / NSW LRS / Pgs: ALL / Pnt: 29-Jul-2022 13:07 / seq: 7 of 12  
© Office of the Registrar-General / Src: Hazlett / Ref: NOV-2002-MILOSM-4345

CARSPACES WHERE NOT COVERED ARE LIMITED IN HEIGHT TO 2.5 ABOVE THE UPPER SURFACE OF THEIR RESPECTIVE CONCRETE FLOORS.

THE AREAS SHOWN ARE FOR THE PURPOSE OF THE STRATA TITLES ACT ONLY AND ARE APPROXIMATE.

SP69211



b DENOTES 90° ANGLE  
 A DENOTES FIRST FLOOR  
 CS DENOTES CARSPACE  
 O DENOTES FACE OF WALL PRODUCED  
 X DENOTES FROM CENTRE OF END OF COLUMN

Reduction Ratio 1: 200

Lengths are in metres

**GROUND FLOOR**

*D Fairlie*  
 Surveyor Registered

*A. Caponos*  
 Authorised Person/General Manager/Accredited Certifier

SURVEYOR'S REFERENCE: 7199/SP2(H)

Reg:R224272 / Doc:SP 0069211 P / Rev:07-Nov-2002 / NSW IRS / Pgs:ALL / Prt:29-Jul-2022 13:07 / seq:9 of 12  
 © Office of the Registrar-General / Src:NovP-MILOSM-4345

CONNECTION (4.375) ADDED PER SURVEYOR'S REQUEST