

Landscape Package

Contents	Drawing No.	Issue	Date
Coversheet, Imagery & Plant Schedule	CRA01-DA-100	D	26/06/2019
Landscape Plan of subdivision - Overall	CRA01-DA-101	D	26/06/2019
Landscape Plan of subdivision - 1 of 2	CRA01-DA-102	D	26/06/2019
Landscape Plan of subdivision - 2 of 2	CRA01-DA-103	D	26/06/2019

SITE LOCATION MAPS

Regional Location Map



Site Location Map





1 Indicative Character Imagery

Native Trees, Shrubs & Grasses



Creeklane Corridor Planting



2 Indicative Almost Native Plant Imagery

Abbrev	Botanical Name	Common Name	Mature Height (m)	Pot Size	Qty
Trees					
ANG flo	Angophora floribunda	Rough-Barked Apple	30	45L	6
BAN int	Banksia integrifolia	Coastal Banksia	8-10	45L	45
COR fic	Corymbia ficifolia	Red Flowering Gum	6	45L	10
ELA ret	Elaeocarpus reticulatus	Blueberry Ash	15	45L	12
EUC robusta	Eucalyptus robusta	Swamp Mahogany	25	45L	2
LIV aus	Livistona australis	Cabbage Tree Palm	20	45L	8
SYZ smi	Syzygium smithii	Lilly pilly	8-10	45L	12
TRI lau	Tristaniopsis laurina	Water Gum	8	400L	5
Shrubs					
ALY hue	Alyogyne huegelia 'Monterey Bay'	Blue Hibiscus	2.5	200mm	
BAE lin	Baeckea linifolia	Flax Leaf Heath Myrtle	2	200mm	
COR alb	Correa alba	White Correa	1.5-2	200mm	
ERI myo	Eriostemon myoporoides	Long Leaf Waxflower	1.5-2	200mm	
HEL pet	Helichrysum petiolare	Licorice Plant	0.5	200mm	
MEL sty	Melaleuca styphelioides	Prickly Leafed Paperbark	7-12	200mm	
PIT tob	Pittosporum tobira 'Miss muffet'	Miss Muffet Tobira	1-2	200mm	
PLE arg	Plectranthus argentatus	Silver Spur Flower	1	200mm	
SYZ cas	Syzygium 'Cascade'	Cascade Lilly Pilly	2-3	200mm	
SYZ boo	Syzygium 'Boomer'	Lilly Pilly	1.5	200mm	
WES fru	Westringia 'smokie'	Coast Rosemary	1.5	200mm	
Accent					
DOR exc	Doryanthes excelsa	Gynea Lily	2-4	25L	
MAC com	Macrozamia communis	Burrawang	2-3	25L	
PTE umb	Pteris umbrosa	Jungle Fern	1	5L	
Grasses					
CAR app	Carex appressa	Tall Sedge	0.9	V/cell	
DIA cae	Dianella caerulea 'Breeze'	Blue Flax Lily	0.6-0.7	V/cell	
DIA tas	Dianella tasmanica 'Destiny'	Verigated Flax Lily	0.35	V/cell	
FAC nod	Facelia nodosa	Knobby Club Rush	0.8	V/cell	
JUN usi	Juncus usitatus	Common Rush	0.8	V/cell	
LOM hys	Lomandra hystrix	Fine Mat Rush	0.6	V/cell	
LOM lon	Lomandra longifolia	Mat Rush	1.0	V/cell	
LOM tan	Lomandra tanika	Fine Mat Rush	0.5	V/cell	
Groundcovers					
ASP nid	Asplenium nidus	Bird's Nest Fern	-	140mm	
CER tom	Cerastium tomentosum	Snow In Summer	0.2	140mm	
CHR max	Chrysanthemum maximum	Shasta Daisy	0.9	140mm	
EVO pil	Evolvulus pilosus	Blue Eyes	0.5	140mm	
GRE poo	Grevillea 'Poorinda Royal Mantle'	Creeping Grevillea	-	140mm	
HIB sca	Hibbertia scandens	Golden guinea vine	0.3	140mm	
MYO par	Myoporum parvifolium	Creeping Boobialla	-	V/cell	
PEL aus	Pelargonium australe	Coastal Geranium	-	140mm	
VIO hed	Viola hederacea	Native Violet	-	140mm	

Inner 25 Creeklane corridor planting (Swamp Mahogany Forest species)

Abbrev	Botanical Name	Common Name	Mature Height (m)	Pot Size	Qty
Trees					
EUC robusta	Eucalyptus robusta	Swamp Mahogany	25	25L	4
CAS gla	Casuarina glauca	Casuarina	10	25L	5
LIV aus	Livistona australis	Cabbage Tree Palm	20	25L	12
MEL lin	Melaleuca linarifolia	Narrow Leafed Paperbark	8	25L	14
Shrubs (2 PER 5m2 clumps of 3-5)					
ACA lon sub	Acacia longifolia subsp. longifolia	Golden Wattle	8	tube stock	2 / 5m2
DOD tri	Dodonaea triquetra	Large-leaf Hop-Bush	3	tube stock	2 / 5m2
HOM pap	Homalanthus populifolius	Bleeding Heart Tree	6	tube stock	2 / 5m2
Ferns, Grasses (3 PER m2) & Groundcovers (5 PER m2)					
COM cya	Commelina cyanea	Native Wandering Jew	0.3	V/cell	6 / m2
GAH cla	Gahnia clarkei	Saw Sedge	2	V/cell	4 / m2
HYD ped	Hydrocotyle pedunculata	Pennywort	0.1	V/cell	5 / m2
HYP mue	Hypolepis muelleri	Ground Fern	1	V/cell	4 / m2
PHR aus	Phragmites australis	Common Reed	6	V/cell	4 / m2
PTE esc	Peridium esculentum	Bracken Fern	1.5	V/cell	4 / m2
VIO hed	Viola hederacea	Native Violet	-	V/cell	6 / m2

3 Indicative Plant Schedule



NOTE: CREEK CORRIDOR INSTALLATION, MAINTENANCE, DEDICATION & TIMING

- Weed mapping & vegetation maintenance plan for creekline corridor to be undertaken prior to construction certificate.
- Rehabilitation works to begin minimum 6 months (excluding June, July, August) prior to dedication.
- Council dedication to coincide with registration of title.

1 Site Plan

- Landscape Area (deep soil)
- Proposed hard surface
- Indicative Building Footprints



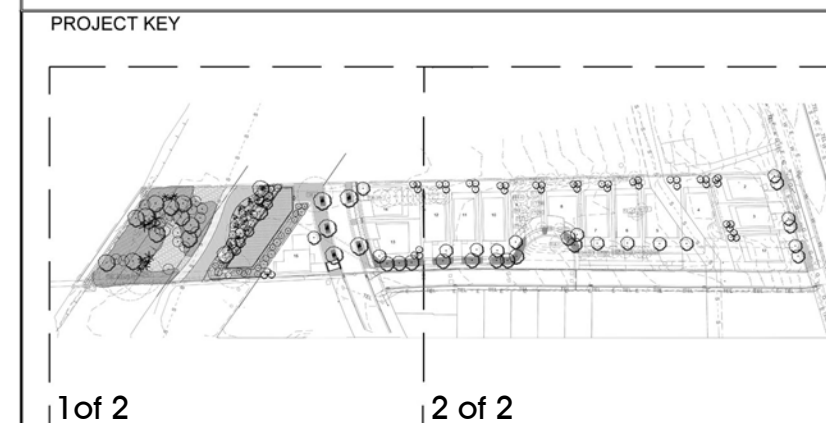
2 Site Coverage Plan

Lot 2 (235.2m2) Landscape Area: 100 m2 (43%) Lot 3 (235.2m2) Landscape Area: 100 m2 (43%) Lot 4 (487.9m2) Landscape Area: 207 m2 (42%) Lot 5 (443.2m2) Landscape Area: 217 m2 (48%)	Lot 6 (309.7m2) Landscape Area: 108 m2 (35%) Lot 7 (277.8m2) Landscape Area: 105 m2 (38%) Lot 8 (237.1m2) Landscape Area: 95 m2 (40%) Lot 9 (245.3m2) Landscape Area: 97 m2 (40%)	Lot 10 (261.2m2) Landscape Area: 106 m2 (41%) Lot 11 (258.3m2) Landscape Area: 106 m2 (41%) Lot 12 (259.1m2) Landscape Area: 106 m2 (41%) Lot 13 (241m2) Landscape Area: 102 m2 (42%)	Lot 14 (254m2) Landscape Area: 90 m2 (35%) Lot 15 (286m2) Landscape Area: 146 m2 (51%) Lot 17 (335.9m2) Landscape Area: 180 m2 (54%)	Lot 16 (Inner Creek) Landscape Area: 942.3 m2 (100%) Pt.1 (Outer Creek) Landscape Area: 964.3 m2 (100%) Roads & Verges (1010m2) Landscape Area: 320 m2 Total Site Area: 7284m2 Total Landscape Area: 4095m2 (56%)
--	--	--	--	---

Scale 1:500 @ A1

Scale 1:500 @ A1

- LEGEND
- Existing Trees - To be Removed (include grubbing out stumps to 300mm and remediation of soil where applicable)
 - Existing Trees - To be Retained & Protected (as per Tree Protection Zone AS4907)
 - SHRUBS and GROUND COVERS
 - PROPOSED LIVISTONA AUSTRALIS
 - PROPOSED TREES
 - PROPERTY BOUNDARY
 - LOT BOUNDARY
 - CONCRETE FOOTPATH (REFER ENGINEER)
 - DECOMPOSED (DECO) GRANITE PATH
 - BIORETENTION BASIN PLANTING
 - STREETSIDE PLANTING
 - GROUNDCOVERS AND SHRUBS IN APZ
 - LAWN (BUFFALO)
 - SMR1 SWAMP MAHOGANY REVEGETATION AREA (SMR1) Grasses & groundcover only.
 - SMR2 SWAMP MAHOGANY REVEGETATION AREA (SMR2) Shrubs, ferns, grasses & groundcover.
 - CREEK BED
 - GARDEN EDGE
 - STORMWATER DRAINAGE



sym. studio has been commissioned to prepare a concept landscape plan for a residential subdivision at 53B Warriewood Road, Warriewood. This property is a part of the Warriewood Valley, situated west of Mona Vale Beach on the Northern Beaches of Sydney.

Warriewood Valley is transforming into a dynamic urban environment with new residential communities, parks, playgrounds, walkways, cycleways and creekline restoration. The existing landscape character is dominated by degraded pastureland grasses, bordered to the south by Narabeen Creek riparian corridor and an evolving residential streetscape to the north (Warriewood Road).

Significant canopy trees include Angophora, Corymbia, Eucalyptus, Livistonia & Casuarinas with a midstory of Pittosporum, Acmena & Banksia. Understory and ground covers include Lomandra & Dianella sp. The gently sloping topography provides opportunity to emphasise the influence of Narrabeen Creek and its historical function of enriching alluvial soils and the supply of fresh water for irrigation of productive agricultural lands. The landscape design a/ prioritises the rehabilitation of the inner 25.0M creek corridor and responds to the Warriewood Valley Masterplan outer 25.0M creek corridor which includes a 2.5M public access path/cycleway as well the integration of a bio-retention basin into the passive recreation usage of these areas along the riparian corridor.

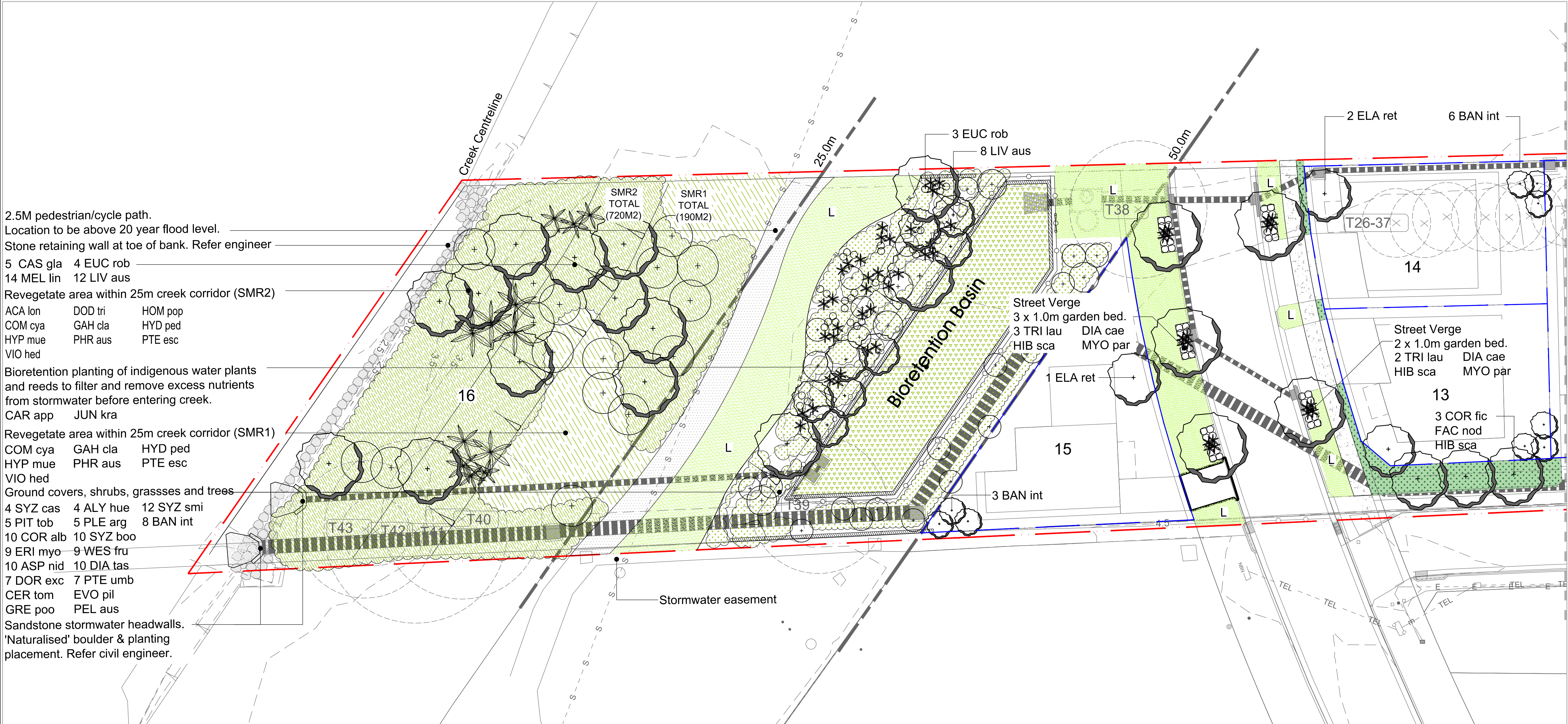
The streetscape includes Lorikeet Drive and Warriewood Road. In keeping with the Warriewood Valley Masterplan street trees have been determined by neighbouring developments and therefore a continuation of these species and large pot sizes serve to provide instant impact at time of installation. Interallotment trees include 1 x medium sized tree (Elaeocarpus reticulatus) located in the front yard and 3x small trees in the back (banksia integrifolia) clumped together. Warriewood Road Frontages have 2x large canopy trees (Angophora floribunda) as per DCP requirements. Fauna friendly boundary fencing will facilitate small mammal movement through the community.

The landscape strategy looks to retain existing vegetation, restore local habitat and revegetate with endemic species. Landscape planting has been kept to predominantly native, with many endemic species which are adaptable and dependable in meeting the demands of a residential community.

The landscape design reinforces the local character achieved by retaining and enhancing a proportion of native vegetation and implementing a design approach that is sympathetic to the existing site character for the benefit of existing wildlife and new residents.

3 Statement of Environmental Effects

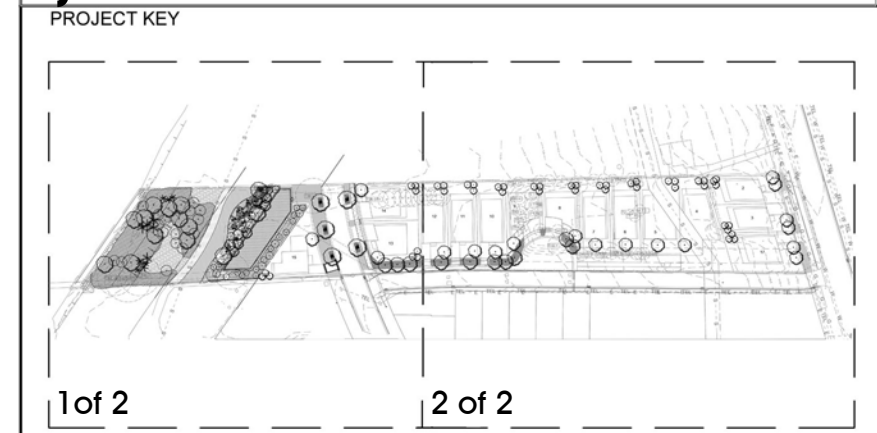
26/06/19	D	COUNCIL APPROVAL - DA	AD
25/06/19	C	COUNCIL APPROVAL - DA	AD
05/03/19	P1	COUNCIL APPROVAL - DA	AD
DATE	ISSUE	AMENDMENT	BY
PROJECT			
53B & 53 WARRIEWOOD RD, WARRIEWOOD, NSW			
CLIENT			
LEGENDWAY PTY LTD			
LANDSCAPE ARCHITECT			
sym. studio Phone: 61 2 9411 2734 Studio 1, Po. Box 53 Mona Vale, NSW Australia www.symstudio.com			
DRAWING TITLE			
LANDSCAPE PLAN (Sub Division)			
APPROVED FOR RELEASE			
AILA #1420			
DATE	DRAWN	CHECKED	
26/06/19	AD	CG	
PROJECT No.	DRAWING No.	ISSUE	
CRA01	CRA01 DA-101	D	
COPYRIGHT OF DESIGN SHOWN HERE IS RETAINED AND AUTHORITY FOR ANY REPRODUCTION, IF IN DOUBT ASK. FOLLOW WRITTEN DIMENSIONS ONLY. DO NOT SCALE OFF DRAWINGS. DO NOT KEEP SUPERSEDED DRAWINGS ON SITE.			



2.5M pedestrian/cycle path.
Location to be above 20 year flood level.
Stone retaining wall at toe of bank. Refer engineer
5 CAS gla 4 EUC rob
14 MEL lin 12 LIV aus
Revegetate area within 25m creek corridor (SMR2)
ACA lon DOD tri HOM pop
COM cya GAH cla HYD ped
HYP mue PHR aus PTE esc
VIO hed
Bioretention planting of indigenous water plants
and reeds to filter and remove excess nutrients
from stormwater before entering creek.
CAR app JUN kra
Revegetate area within 25m creek corridor (SMR1)
COM cya GAH cla HYD ped
HYP mue PHR aus PTE esc
VIO hed
Ground covers, shrubs, grassses and trees
4 SYZ cas 4 ALY hue 12 SYZ smi
5 PIT tob 5 PLE arg 8 BAN int
10 COR alb 10 SYZ boo
9 ERI myo 9 WES fru
10 ASP nid 10 DIA tas
7 DOR exc 7 PTE umb
CER tom EVO pil
GRE poo PEL aus
Sandstone stormwater headwalls.
'Naturalised' boulder & planting
placement. Refer civil engineer.

- LEGEND
- Existing Trees - To be Removed (include grubbing out stumps to 300mm and remediation of soil where applicable)
 - Existing Trees - To be Retained & Protected (as per Tree Protection Zone AS4907)
 - SHRUBS and GROUND COVERS
 - PROPOSED LIVISTONA AUSTRALIS
 - PROPOSED TREES
 - PROPERTY BOUNDARY
 - LOT BOUNDARY
 - CONCRETE FOOTPATH (REFER ENGINEER)
 - DECOMPOSED (DECO) GRANITE PATH
 - BIORETENTION BASIN PLANTING
 - STREETSIDE PLANTING
 - GROUNDCOVERS AND SHRUBS IN APZ
 - LAWN (BUFFALO)
 - SMR1 SWAMP MAHOGANY REVEGETATION AREA (SMR1) Grasses & groundcover only.
 - SMR2 SWAMP MAHOGANY REVEGETATION AREA (SMR2) Shrubs, ferns, grasses & groundcover.
 - CREEK BED
 - GARDEN EDGE
 - STORMWATER DRAINAGE

JOINS SHEET 103



26/06/19	D	COUNCIL APPROVAL - DA	AD
25/06/19	C	COUNCIL APPROVAL - DA	AD
05/03/19	P1	COUNCIL APPROVAL - DA	AD
DATE	ISSUE	AMENDMENT	BY

PROJECT 53B & 53 WARRIEWOOD RD, WARRIEWOOD, NSW

CLIENT
LEGENDWAY PTY LTD

LANDSCAPE ARCHITECT
gym studio
Phone: 61 2 9411 2734
Studio 1, Po. Box 53
Mona Vale, NSW Australia
www.gymstudio.com

DRAWING TITLE LANDSCAPE PLAN (Sub Division)		
APPROVED FOR RELEASE AILA #1420		
DATE	DRAWN	CHECKED
26/06/19	AD	CG
PROJECT No.	DRAWING No.	ISSUE
CRA01	CRA01 DA-102	D

COPYRIGHT OF DESIGN SHOWN HERE IS RETAINED AND AUTHORITY FOR ANY REPRODUCTION, IF IN DOUBT ASK. FOLLOW WRITTEN DIMENSIONS ONLY. DO NOT SCALE OFF DRAWINGS. DO NOT KEEP SUPERSEDED DRAWINGS ON SITE.

1 Landscape Plan - 1 Of 2

Scale 1:200 @ A1

General Note:

Services shown as diagrammatic. Adjust final location onsite during installation.

