

DRAWING SCHEDULE

44_MGWC_01	COVER PAGE
44_MGWC_02	PLANT SCHEDULE
44_MGWC_03	LANDSCAPE PLAN
44_MGWC_12	GENERAL SPECIFICATION AND TYPICAL DETAILS

DESIGN INTENT:

In consideration of the environmentally sensitive area and the plant list for the Curl Curl Ward as provided by Anthony Powe via email on 02/08/23, the planting scheme has adhered to a selection of plants endemic to the area with the exception of several Callistemon viminalis that have been included to replace 2 that are proposed to be removed as part of the development.

Encorporating a combination of under story planting and canopy shade trees reducing the impact off the height of the purpose built facility for neighbours and the community in general and adding shade to the car park reducing the heat island effect of hard surfaces.

Shrub and ground cover planting has been employed under the shade/canopy trees in consideration of the pedestrian safety ensuring that drivers have a clear view for the most part above a meter when entering and leaving the car port. It also provides a green corridor for smaller native bird species and mammals to pass freely and easily through and around the development from Manly Creek.

The Cafe will play an important role in the integration of the new development and the existing sporting fields on Nolan reserve as weel as amenity facilities for families utilising the west side of Nolan reserve. We imagine/invite families who utilise the center directly for gymnastic excellence and Nolan fields enthusiasts alike to utilise the cafe area and the relaxed grassy knollf facing Nolan reserve under the shade tees provided, on a regular basis during the week and particularly on weekends.

We suggest that a regular maintenance and replacement programbe implemented for the first 2 years until plant establishment with nono watering after 3 months as the planting selection has been made specifically to avoid permanent irrigation.

Maintaining the most part of the existing hedge will alleviate concerns of the impact of the development in its initial stages and also add amenity in the future reducing the hieght and scale of the building providing a layered landscape view reducing the impact of the scale of the building from Kentwell and Pittwater roads and for neighbouring properties.

We anticipate that the Angophra lined boulevard with its seating and shade will become a favourite and iconic landscape that will be cherished by locals for years to come along with the Manly Warringah Gymnastics Center.

GENERAL NOTES:

*ALL LANDSCAPE DRAWINGS ARE TO BE READ IN CONJUNCTION WITH THE ARCHITECTS AND ADDITIONAL CONSULTANT'S DRAWINGS, SPECIFICATIONS AND REPORTS

*ALL PUBLIC UTILITY SERVICES ARE TO BE LOCATED ON SITE BY THE CONTRACTOR PRIOR TO THE COMMENCEMENT OF WORKS. THE LOCATION, PRESENCE AND EXTENT OF SERVICES SHOWN ARE NOT GUARANTEED COMPLETE OR CORRECT

*PERFORM EXCAVATION IN THE VICINITY OF UNDERGROUND UTILITIES WITH CARE AND IF NECESSARY, BY HAND. THE CONTRACTOR BEARS FULL RESPONSIBILITY FOR THIS WORK AND DISRUPTION OR DAMAGE TO UTILITIES SHALL BE REPAIRED IMMEDIATELY AT NO EXPENSE TO THE OWNER

*NO TREES PROTECTED UNDER THE LOCAL COUNCIL'S TREE PRESERVATION ORDER ARE TO BE REMOVED UNLESS APPROVED BY DEVELOPMENT CONSENT OR PERMIT OBTAINED FROM COUNCIL

*ALL PAVING IS INDICATIVE, TO BE TO FUTURE SPECIFICATION, AND SET OUT ON SITE

ALL WORK TO BE CARRIED OUT IN ACCORDANCE WITH THE LOCAL COUNCIL'S APPROVAL, STANDARDS AND CODES

*THE CONTRACTOR IS TO ENSURE THAT ALL THE WORKS ARE CARRIED OUT IN ACCORDANCE WITH THE WORK HEALTH AND SAFETY ACT

*TERRANEO TO REVIEW PLANT MATERIALS AT SOURCE OR BY PHOTOGRAPHS PRIOR TO PURCHASE AND DELIVERY

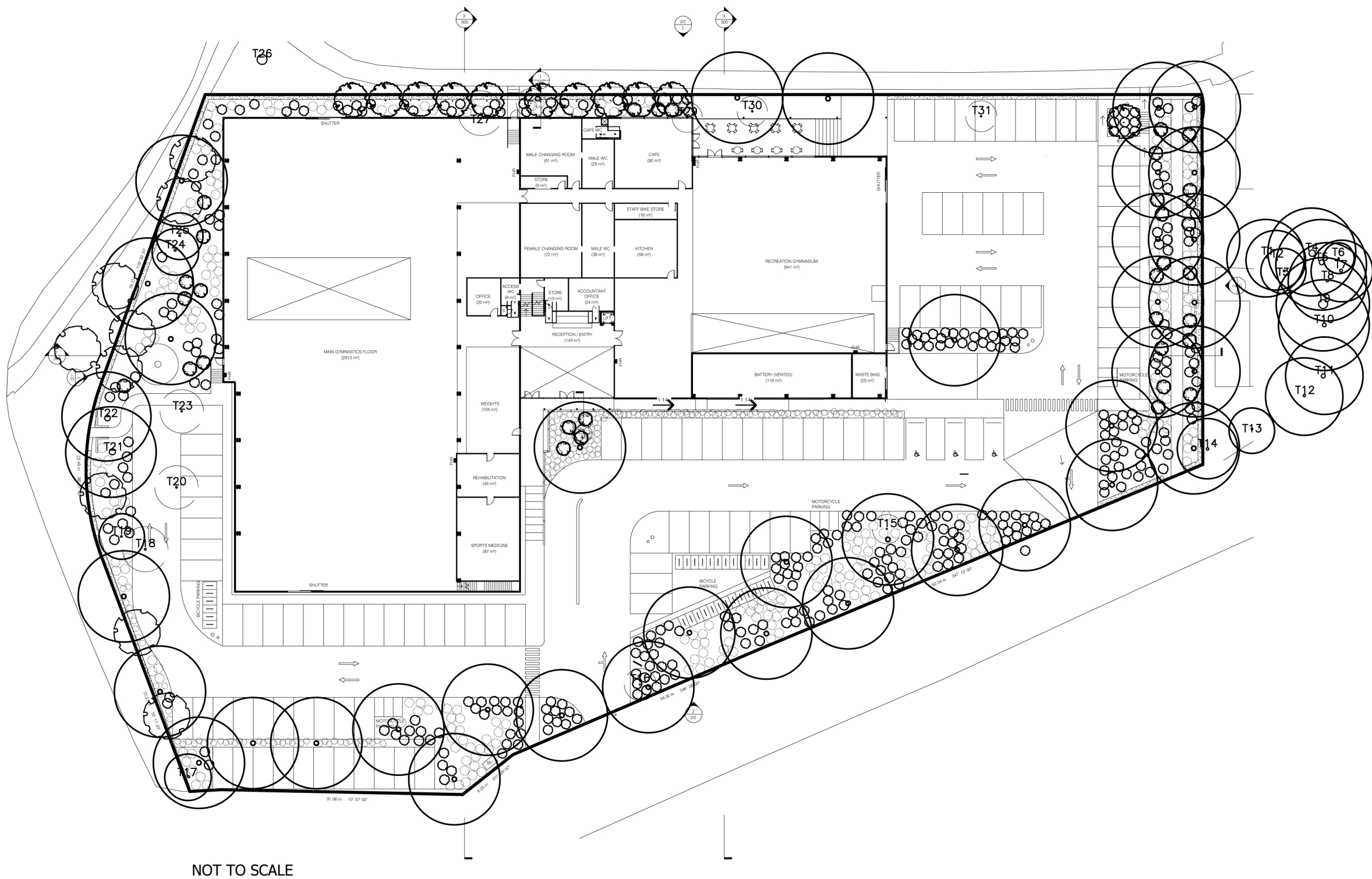
*EXACT LOCATIONS OF NEW PLANT MATERIAL TO BE SET OUT AND APPROVED BY TERRANEO ONSITE PRIOR TO INSTALLATION. TERRANEO RESERVES THE RIGHT TO ADJUST PLANTS TO EXACT LOCATION ONSITE

DRAINAGE NOTES:

*REFER TO CIVIL ENGINEER'S UTILITY AND DRAINAGE PLANS FOR UTILITY LOCATION AND DRAINAGE INFORMATION.

*REQUIREMENTS FOR LANDSCAPE DRAINAGE TO BE CONFIRMED ONSITE UNLESS OTHERWISE SHOWN ON THE LANDSCAPE PLANS

*TREE PITS THAT HAVE BEEN EXCAVATED INTO HEAVY EARTH OR STONE TO CONTAIN A RING OF AG PIPE COVERED WITH AT LEAST 200MM OF FREE DRAINING MATERIAL AND CONNECTED TO A DRAINAGE OUTLET (REFER TO TYPICAL TREE PIT DRAINAGE SECTION)

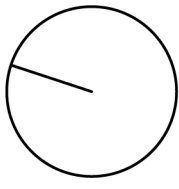


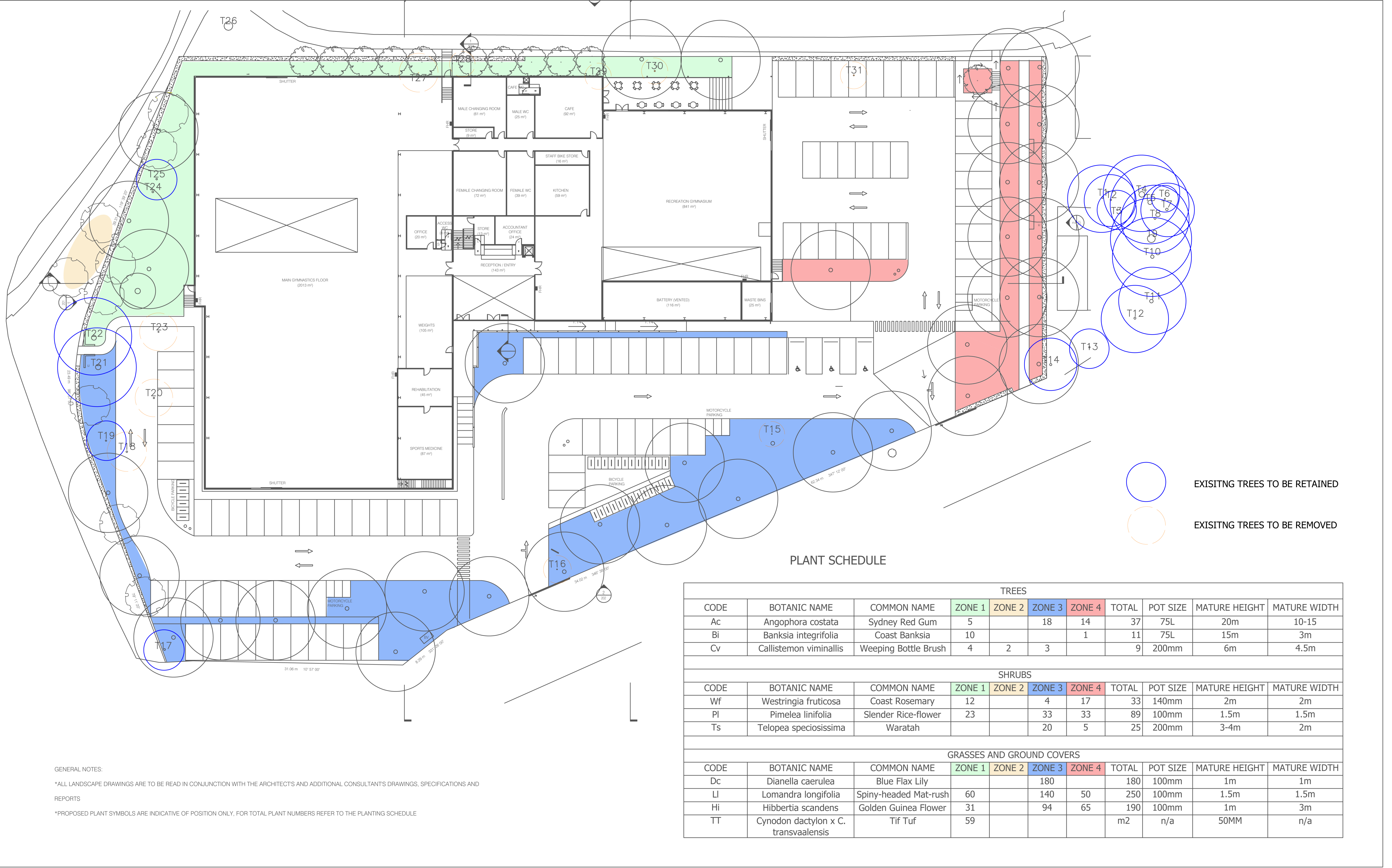
terraneo landscape design

142 Cabarita Road
Avalon, NSW 2107
M 0401 631 040
E courtney@terraneo.com.au

CLIENT	MANLY WARRINGAH GYMNASTICS CLUB - CENTRE OF EXCELLENCE
ADDRESS	431 Pittwater Road, NORTH MANLY
TITLE	COVER PAGE - 44_MGWC_01

SCALE	NOT TO SCALE
DATE	20/08/2024
DRAWN BY	C. TERRY
PROJECT NO.	44_MGWC_01





GENERAL NOTES:

*ALL LANDSCAPE DRAWINGS ARE TO BE READ IN CONJUNCTION WITH THE ARCHITECT'S AND ADDITIONAL CONSULTANT'S DRAWINGS, SPECIFICATIONS AND REPORTS

*PROPOSED PLANT SYMBOLS ARE INDICATIVE OF POSITION ONLY, FOR TOTAL PLANT NUMBERS REFER TO THE PLANTING SCHEDULE

PLANT SCHEDULE

TREES										
CODE	BOTANIC NAME	COMMON NAME	ZONE 1	ZONE 2	ZONE 3	ZONE 4	TOTAL	POT SIZE	MATURE HEIGHT	MATURE WIDTH
Ac	Angophora costata	Sydney Red Gum	5		18	14	37	75L	20m	10-15
Bi	Banksia integrifolia	Coast Banksia	10			1	11	75L	15m	3m
Cv	Callistemon viminalis	Weeping Bottle Brush	4	2	3		9	200mm	6m	4.5m
SHRUBS										
CODE	BOTANIC NAME	COMMON NAME	ZONE 1	ZONE 2	ZONE 3	ZONE 4	TOTAL	POT SIZE	MATURE HEIGHT	MATURE WIDTH
Wf	Westringia fruticosa	Coast Rosemary	12		4	17	33	140mm	2m	2m
Pl	Pimelea linifolia	Slender Rice-flower	23		33	33	89	100mm	1.5m	1.5m
Ts	Telopea speciosissima	Waratah			20	5	25	200mm	3-4m	2m
GRASSES AND GROUND COVERS										
CODE	BOTANIC NAME	COMMON NAME	ZONE 1	ZONE 2	ZONE 3	ZONE 4	TOTAL	POT SIZE	MATURE HEIGHT	MATURE WIDTH
Dc	Dianella caerulea	Blue Flax Lily			180		180	100mm	1m	1m
Ll	Lomandra longifolia	Spiny-headed Mat-rush	60		140	50	250	100mm	1.5m	1.5m
Hi	Hibbertia scandens	Golden Guinea Flower	31		94	65	190	100mm	1m	3m
TT	Cynodon dactylon x C. transvaalensis	Tif Tuf	59				m2	n/a	50MM	n/a



GENERAL SPECIFICATION NOTES

1.0 STANDARDS

1.1 SOILS

- AS 4419: Soils for Landscaping and Garden Use
- AS 3743: Potting Mixes
- AS 4454: Composts, Soil Conditioners and Mulches

1.2 Plants

- AS 2303: Tree Stock for Landscape Use
- AS 4970: Protection of Trees on Development Sites

2.0 PRODUCTS

2.1 MATERIAL

Topsoil

- Source: Provide topsoil, which contains organic matter, is free from stones, contaminants and weeds
- Site: If available, provide material recovered from the site

Turf

- Supplier: Obtain turf from a specialist grower of cultivated turf
- Quality: Provide turf of even thickness, free from weeds and other foreign matter

Fertiliser

- General: Provide proprietary fertilisers, delivered to the site in sealed bags marked to show manufacturer or vendor, weight, fertiliser type, N:P:K ratio, recommended uses and application rates

Plants

- Health: Supply plants with foliage size, texture and colour at time of delivery consistent with the size, texture and colour shown in healthy specimens of the nominated species
- Vigour: Supply plants with extension growth consistent with that exhibited in vigorous specimens of the species nominated
- Damage: Supply plants free from damage and from restricted habit due to growth in nursery rows
- Pests and disease: Supply plants with foliage free from pest attack or disease
- Substitutes: Plant substitution (species or quantities) is not acceptable unless approved by Myles Baldwin Design.

3.0 EXECUTION

3.1 SITE PREPARATION

Weed eradication

- Herbicide: Eradicate weeds with a non-residual glyphosate herbicide in any of its registered formulae, at the recommended maximum rate
- Earth mounds
- Placing: Place clean filling in layers approximately 150 mm thick compacted to 85% of the dry density ratio of the surrounding soil as determined by AS 1289.5.4.1. Minimise slumping and further internal packing down

Edges

- Construct changes in grade over a minimum width of 500 mm to smooth, gradual and rounded profiles with no distinct joint

Existing trees

- Tree protection zones (TPZ) shall be established around all trees to be retained and in accordance of AS 4970. The area within the fence shall be mulched and maintained at 75mm depth
- No excavation, construction activity, grade changes, storage of materials, stock piling, siting of sheds, preparation of mixes or cleaning of talls is permitted within the TPZ

Planting beds

- Excavated: Excavate to bring the subsoil to at least 300 mm below finished design levels. Shape the subsoil to fall to subsoil drains where applicable. Break up the subs to a further depth of 100 mm
- Unexcavated: Remove weeds, roots, building rubble and other debris. Bring the planting bed to 75 mm below finished design levels
- Services and roots: Do not disturb services or tree roots; if necessary, cultivate these areas by hand

Placing topsoil

- General: Spread the topsoil on the prepared subsoil and grade evenly, making the necessary allowances to permit the following:
- Required finished levels and contours may be achieved after light compaction
- Grassed areas may be finished flush with adjacent hard surfaces such as kerbs, paths and mowing strips

Topsoil depths

- General: Spread topsoil to the following typical depths;
- Excavated planting areas: If using organic soil, 300 mm. Refer to typical soil profile detail
- Irrigated grassed areas generally; 150 mm
- Irrigated grassed areas, heavy use (e.g. playing fields, playgrounds, and public parks); 200 mm

Sediment and Erosion Control

- Sediment and erosion control measures are required during the construction of all developments and building works. It shall be the contractor's responsibility that works are carried out in accordance with a sediment and erosion control plan and council/approving authority's requirements.

3.2 TURFING

General

- Supply: Deliver the turf within 24 hours of cutting, and lay it within 36 hours of cutting. Prevent the turf from drying out between cutting and laying. If it is not laid within 36 hours of cutting, roll it out on a flat surface with the grass up, and water as necessary to maintain a good condition
- Laying: Lay the turf in the following manner:
 - In stretcher pattern with the joints staggered and close butted
 - Parallel with the long sides of level areas, and with contours on slopes
 - To finish flush, after tamping, with adjacent finished surfaces of ground, paving edging, or grass seeded areas
- Tamping: Lightly tamp to an even surface immediately after laying. Do not use a roller
- Fertilising: Mix the fertiliser thoroughly into the topsoil before placing the turf. Apply lawn fertiliser at the completion of the first and last mowings, and at other times as required to maintain healthy grass cover
- Watering: Water immediately after laying until the topsoil is moistened to its full depth. Continue watering to maintain moisture to this depth
- Levels: Where levels have deviated from the design levels after placing and watering, lift turf and re-grade topsoil to achieve design levels

3.3 PLANTING

General

- Individual plantings in grassed areas: Excavate a hole twice the diameter of the root ball and at least 100 mm deeper than the root ball. Break up the base of the hole to a further depth of 100 mm, and loosen compacted sides of the hole to prevent confinement of root growth
- Watering: Thoroughly water the plants before planting, immediately after planting, and as required to maintain growth rates free of stress
- Placing: Remove the plant from the container with minimum disturbance to the root ball, ensure that the root ball is moist and place it in its final position, in the center of the hole and plumb, and with the top soil level of the plant root ball level with the finished surface of the surrounding soil
- Fertilising plants: In planting beds and individual plantings, place fertiliser pellets around the plants at the time of planting
- Backfilling: Backfill with topsoil mixture. Lightly tamp and water to eliminate air pockets

3.4 TREES

General

- All trees must be planted by an AQF Level 3 Qualified Arborist, Landscape Gardener or Horticulturalist

Clay Soils

- The base of each tree pit within clay soils shall be laid with 100mm deep scoria. A 90mm ag line ring shall sit within the scoria and drain directly to a suitable location, Lay geo-textile fabric evenly above the scoria, prior to tree placement and backfilling with 80/20 mineral soil

3.5 MULCHING

Placing mulch

- General: Place mulch to the required depth, clear of plant stems, and rake to an even surface flush with the surrounding finished levels. Spread and roll mulch so that after settling, or after rolling, it is smooth and evenly graded between design surface levels sloped towards the base of plant stems in plantation beds, and not closer to the stem than 50 mm in the case of gravel mulches.
- Garden beds: Greenlife Mulch and Compost
- Tree mulch ring: Mushroom compost
- Depths: Spread organic mulch to a depth of 75 mm, and gravel mulch to a depth of 50 mm

3.6 STAKES AND TIES

Stakes

- Material: Hardwood, straight, free from knots or twists, pointed at one end
- Installation: Drive stakes into the ground at least one third of their length, avoiding damage to the root system

Ties

- General: Provide 50 mm hessian webbing ties fixed securely to the stakes, one tie at half the height of the main stem, others as necessary to stabilise the plant

3.7 WATERING

Establishment

- Extent: Available soil moisture content of grass areas and garden beds to be monitored on a weekly basis using an approved moisture probe and water applied on a demand basis. Readings should be taken at a depth of 250mm
- All grass areas and garden beds should be maintained within a range of 50-80% available soil moisture. Under no circumstance should areas under irrigation fall below a level of 30% available soil moisture
- No visible signs of wilting of leaves or stems, with all plants fully turgid at all times.
- No sign of over-watering such as constantly wet soil, brown leaf margins, stem rot or brown spots on foliage

3.8 LANDSCAPE SUBSOIL DRAINAGE

General

- Include subsoil drainage behind retaining walls, along path edges and in mass planting beds, including lawn areas. Maintenance access points shall be every 15m

Materials

- Geotextile fabric: shall consist of a woven or a non-woven type to be manufactured from synthetic materials other than polyamide
- Aggregate: shall be a single size with a nominal dimension of 10-40mm
- Subsoil pipe: shall be 90 mm diameter corrugated flexible slotted PVC pipe in a geotabric sock, or 100mm µPVC if under pavement. All pipes to requirements of AS 1254. Where vehicle loads are encountered, reinforced concrete pipe shall be used only

Construction

- Trenches to be minimum 300mm wide and extend 500mm below the subgrade level or 150mm if into bed rock
- Trenches to be lined with geotextile fabric and backfilled with aggregate. Pipe to be laid 50mm above trench floor
- Prior to backfilling the trench, drainage and connection to stormwater is to be approved by the site manager

3.9 COMPLETION

Cleaning

- Stakes and ties: Remove those no longer required at the end of the planting establishment period
- Temporary fences: Remove temporary protective fences at the end of the planting establishment period

4.0 ESTABLISHMENT & DEFECTS LIABILITY

4.1 ESTABLISHMENT

General

- All landscaping works will have an establishment period of 26 weeks in which the subcontractor will be responsible for the maintenance and upkeep of the contracted scope, unless otherwise noted in the project documentation. If applicable refer to the project manager / builder for confirmation

4.2 DEFECTS LIABILITY PERIOD

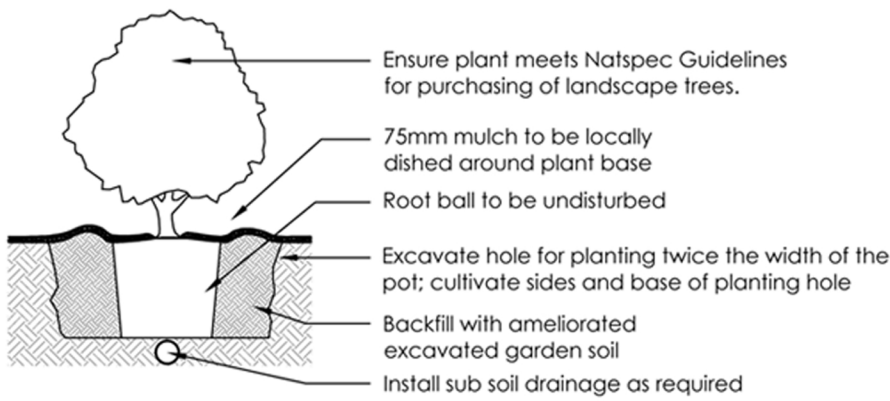
General

- All landscaping works will be subject to a defects liability period of 52 weeks, commencing from the date of Practical Completion, unless otherwise noted in the project documentation. If applicable refer to the project manager / builder for confirmation

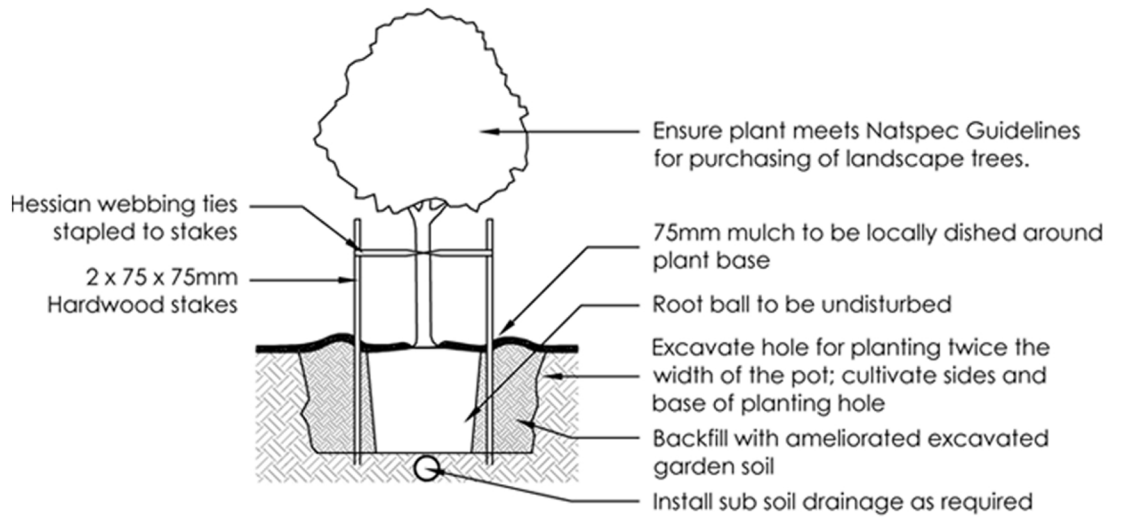
4.3 FAILED PLANTINGS

General

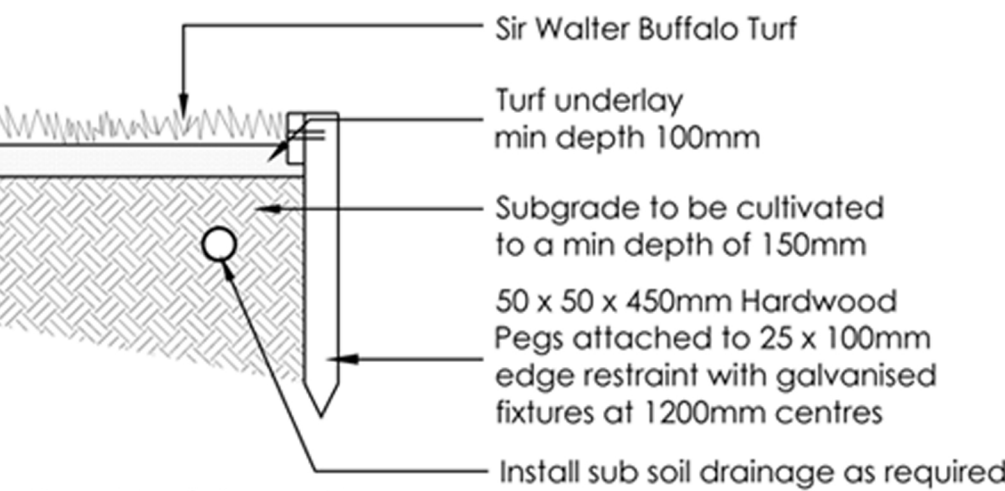
- Photographic images of plants shall be approved by Myles Baldwin Design prior to procurement of replacement plant and tree stock



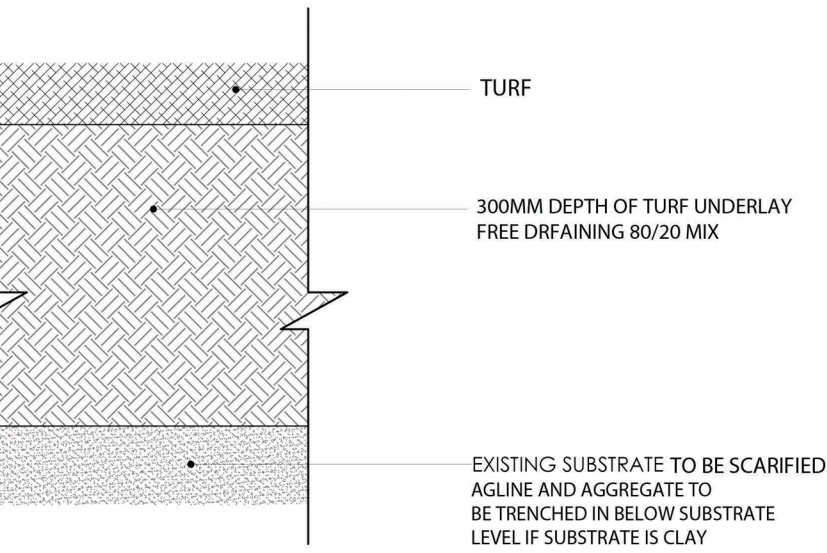
2 Planting Detail
NTS Tube, 150mm, 200mm Pot Size



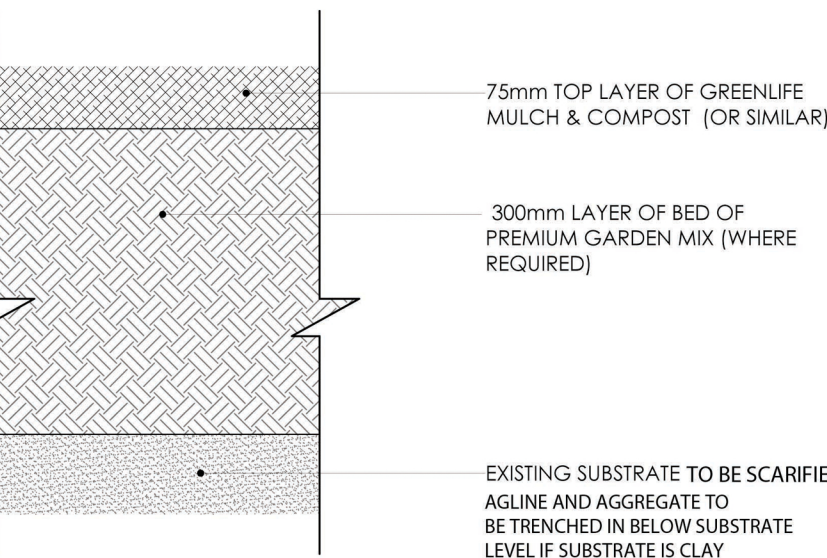
1 Tree Planting Detail
NTS 25L - 75L Pot Size



3 Turf Detail
NTS Timber Edge



TYPICAL TURF AND SOIL PROFILE
SCALE: 1:5 @ A1



TYPICAL GARDEN SOIL PROFILE
SCALE: 1:5 @ A1



terraneo landscape design

142 Cabarita Road
Avalon, NSW 2107
M 0401 631 040
E courtney@terraneo.com.au

CLIENT	MANLY WARRINGAH GYMNASTICS CLUB - CENTRE OF EXCELLENCE
ADDRESS	431 Pittwater Road, NORTH MANLY
TITLE	GENERAL SPECIFICATIONS - 44_MGWC_12

SCALE: 1:50 @ A1
DATE: 04/10/2024
DRAWN BY: C. TAYLOR
PROJECT NO: 00000

