

ARCHITECTURE:

- 0000 GENERAL & SITE INFORMATION
- 1000 GENERAL ARRANGEMENT PLANS
- 2000 GA RCPS
- 3000 GA SECTIONS & ELEVATIONS
- 4000 REFERENCE PLANS
- 5000 STRUCTURAL SET-OUT
- 6000 VERTICAL CIRCULATION
- 7000 INTERIOR DESIGN DETAILS
- 8000 EXTERIOR & FAÇADE DETAILS
- 9000 DRAWN SCHEDULES
- 9000 SCHEDULES & SPECIFICATIONS



LEGEND

- - - DEMOLISHED/ REMOVED
- / / / BIODIVERSITY PROTECTED LAND

DISCLAIMER.

This document may not be secure, may be corrupted in transmission or due to software incompatibility and/or may be amended or altered by third parties after leaving DesignInc Sydney Pty Ltd's possession. DesignInc is not responsible for and accepts no liability for such matters.

Subject only to any conflicting provision within any prior binding agreement by DesignInc Sydney Pty Ltd (such agreement may also contain additional conditions relating to this document and its use):

- The content of this document is confidential and copyright in it belongs to DesignInc Sydney Pty Ltd. The content is permitted only to be opened, read and used by the addressee.
- Users of this document must carry out all relevant investigations and must examine, take advice as required and satisfy themselves concerning the content, correctness and sufficiency of the attachment and its contents for their purposes.
- To the extent permitted by law, all conditions and warranties concerning this document or any use to which they may be put (whether as to quality, outcome, fitness, care, skill or otherwise) whether express or implied by statute, common law, equity, trade, custom or usage or otherwise, are expressly excluded.
- Any person using or relying on document releases & indemnifies and will keep indemnified, DesignInc Sydney Pty Ltd against all claims, liabilities, loss, costs and expenses arising directly or indirectly out of or in connection with such use or reliance including without limitation, any misrepresentation, error or defect in this document.
- Contractors to use Architectural drawings for set out. Contractors to check and verify all dimensions on site prior to construction / fabrication. Figured dimensions take precedence over scaled dimensions.
- Any discrepancies should be immediately referred to the Architect. All work to comply with N.C.C. statutory authorities and relevant Australian Standards.
- Refer also to the Model Disclaimer on the Cover Sheet.

No	DATE	REVISIONS	BY
1	07/07/2022	FOR INFORMATION	
2	12/07/2022	FOR INFORMATION	RF
3	18/07/2022	FOR INFORMATION	RF

1 DEMOLITION SITE PLAN - GROUND FLOOR

ARCHITECT
DesignInc
 Designinc Sydney Pty Ltd
 Level 14, 85 Castlereagh Street
 Sydney NSW 2000 Australia
 +61 2 8905 7100
 sydney@designinc.com.au

Nominated Architects
 Ian Armstrong 7260 | Cathryn Drew-Bredin 7269 | Richard Does 8126 | Mary Anne McGirr 10946

CLIENT



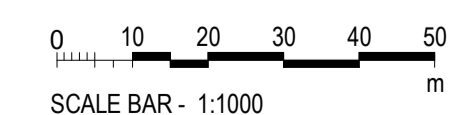
PROJECT
NARRABEEN EDUCATION PRECINCT
 NAMONA ST, NORTH NARRABEEN NSW 2101

DETAILS
 DRAWN Author
 CHECKED Checker
 APPROVED Approver
 SCALE
 1:1000 @ A1



TITLE
DEMOLITION SITE PLAN - SCHOOL - GROUND FLOOR

DRAWING NUMBER
AR-H-0512
 REVISION
3



FOR TREE REMOVAL DA PURPOSES ONLY

0000 - GENERAL & SITE INFORMATION

- ARCHITECTURE:**
 0000 GENERAL & SITE INFORMATION
 1000 GENERAL ARRANGEMENT PLANS
 2000 GA RCPs
 3000 GA SECTIONS & ELEVATIONS
 4000 REFERENCE PLANS
 5000 STRUCTURAL SET-OUT
 6000 VERTICAL CIRCULATION
 7000 INTERIOR DESIGN DETAILS
 8000 EXTERIOR & FACADE DETAILS
 9000 DRAWN SCHEDULES
 9000 SCHEDULES & SPECIFICATIONS

DISCLAIMER.
 This document may not be secure, may be corrupted in transmission or due to software incompatibility and/or may be amended or altered by third parties after leaving DesignInc Sydney Pty Ltd's possession. DesignInc is not responsible for and accepts no liability for such matters.
 Subject only to any conflicting provision within any prior binding agreement by DesignInc Sydney Pty Ltd (such agreement may also contain additional conditions relating to this document and its use):

- The content of this document is confidential and copyright in it belongs to DesignInc Sydney Pty Ltd. The content is permitted only to be opened, read and used by the addressee.
- Users of this document must carry out all relevant investigations and must examine, take advice as required and satisfy themselves concerning the content, correctness and sufficiency of the attachment and its contents for their purposes.
- To the extent permitted by law, all conditions and warranties concerning this document or any use to which they may be put (whether as to quality, outcome, fitness, care, skill or otherwise) whether express or implied by statute, common law, equity, trade, custom or usage or otherwise, are expressly excluded.
- Any person using or relying on document releases & indemnifies and will keep indemnified, DesignInc Sydney Pty Ltd against all claims, liabilities, loss, costs and expenses arising directly or indirectly out of or in connection with such use or reliance including without limitation, any misrepresentation, error or defect in this document.
- Contractors to use Architectural drawings for set out. Contractors to check and verify all dimensions on site prior to construction / fabrication. Figured dimensions take precedence over scaled dimensions.
- Any discrepancies should be immediately referred to the Architect. All work to comply with N.C.C. statutory authorities and relevant Australian Standards.
- Refer also to the Model Disclaimer on the Cover Sheet.

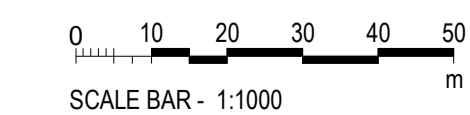
No	DATE	REVISIONS	BY
1	07/07/2022	FOR INFORMATION	
2	12/07/2022	FOR INFORMATION	RF
3	18/07/2022	FOR INFORMATION	RF



LEGEND

- DEMOLISHED/ REMOVED
- BIODIVERSITY PROTECTED LAND

DEMOLITION SITE PLAN - LEVEL 1
 SCALE 1:1000



FOR TREE REMOVAL DA PURPOSES ONLY

ARCHITECT
DesignInc
 Designinc Sydney Pty Ltd
 Level 14, 85 Castlereagh Street
 Sydney NSW 2000 Australia
 +61 2 8905 7100
 sydney@designinc.com.au

Nominated Architects
 Ian Armstrong 7260 | Cathryn Drew-Bredin 7269 | Richard Does 8126 | Mary Anne McGirr 10946



PROJECT
NARRABEEN EDUCATION PRECINCT
 NAMONA ST, NORTH NARRABEEN NSW 2101

DETAILS

DRAWN	Author	SCALE	N
CHECKED	Checker	1:1000 @ A1	
APPROVED	Approver		

TITLE
DEMOLITION SITE PLAN - SCHOOL - LEVEL 1

DRAWING NUMBER	REVISION
AR-H-0513	3

LEGEND

[Grey Box]	EXISTING
[Red Box]	REFURBISHMENT
[Blue Box]	NEW BUILDING
[Green Box]	CIRCULATION

ARCHITECTURE:

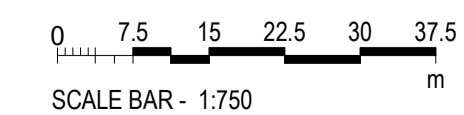
0000	GENERAL & SITE INFORMATION
1000	GENERAL ARRANGEMENT PLANS
2000	GA RCPS
3000	GA SECTIONS & ELEVATIONS
4000	REFERENCE PLANS
5000	STRUCTURAL SET-OUT
6000	VERTICAL CIRCULATION
7000	INTERIOR DESIGN DETAILS
8000	EXTERIOR & FACADE DETAILS
9000	DRAWN SCHEDULES
9000	SCHEDULES & SPECIFICATIONS

DISCLAIMER.
 This document may not be secure, may be corrupted in transmission or due to software incompatibility and/or may be amended or altered by third parties after leaving DesignInc Sydney Pty Ltd's possession. DesignInc is not responsible for and accepts no liability for such matters.
 Subject only to any conflicting provision within any prior binding agreement by DesignInc Sydney Pty Ltd (such agreement may also contain additional conditions relating to this document and its use):
 - The content of this document is confidential and copyright in it belongs to DesignInc Sydney Pty Ltd. The content is permitted only to be opened, read and used by the addressee.
 - Users of this document must carry out all relevant investigations and must examine, take advice as required and satisfy themselves concerning the content, correctness and sufficiency of the attachment and its contents for their purposes.
 - To the extent permitted by law, all conditions and warranties concerning this document or any use to which they may be put (whether as to quality, outcome, fitness, care, skill or otherwise) whether express or implied by statute, common law, equity, trade, custom or usage or otherwise, are expressly excluded.
 - Any person using or relying on document releases & indemnifies and will keep indemnified, DesignInc Sydney Pty Ltd against all claims, liabilities, loss, costs and expenses arising directly or indirectly out of or in connection with such use or reliance including without limitation, any misrepresentation, error or defect in this document.
 - Contractors to use Architectural drawings for set out. Contractors to check and verify all dimensions on site prior to construction / fabrication. Figured dimensions take precedence over scaled dimensions.
 - Any discrepancies should be immediately referred to the Architect. All work to comply with N.C.C. statutory authorities and relevant Australian Standards.
 - Refer also to the Model Disclaimer on the Cover Sheet.

No	DATE	REVISIONS	BY
1	13/05/2022	SCHEMATIC DESIGN	RF
2	26/05/2022	SCHEMATIC DESIGN - DRAFT	JO
3	08/06/2022	PRE-DA - DRAFT	JO
4	29/06/2022	FOR INFORMATION	
5	07/07/2022	FOR INFORMATION	
6	12/07/2022	FOR INFORMATION	RF
7	18/07/2022	FOR INFORMATION	RF



NSHS - GROUND FLOOR
 SCALE 1 : 750



FOR TREE REMOVAL DA PURPOSES ONLY

ARCHITECT
DesignInc
 Designinc Sydney Pty Ltd
 Level 14, 85 Castlereagh Street
 Sydney NSW 2000 Australia
 +61 2 8905 7100
 sydney@designinc.com.au

Nominated Architects
 Ian Armstrong 7260 | Cathryn Drew-Bredin 7269 | Richard Does 8126 | Mary Anne McGirr 10946



PROJECT
NARRABEEN EDUCATION PRECINCT
 NAMONA ST, NORTH NARRABEEN NSW 2101

DETAILS

DRAWN	VB, JJ	SCALE	
CHECKED	RF	1:750 @ A1	
APPROVED	CM		

TITLE
SITE PLAN - SCHOOL - GROUND FLOOR

DRAWING NUMBER	REVISION
AR-H-0521	7

0000 - GENERAL & SITE INFORMATION

LEGEND

EXISTING
REFURBISHMENT
NEW BUILDING
CIRCULATION

ARCHITECTURE:

0000	GENERAL & SITE INFORMATION
1000	GENERAL ARRANGEMENT PLANS
2000	GA RCPs
3000	GA SECTIONS & ELEVATIONS
4000	REFERENCE PLANS
5000	STRUCTURAL SET-OUT
6000	VERTICAL CIRCULATION
7000	INTERIOR DESIGN DETAILS
8000	EXTERIOR & FACADE DETAILS
9000	DRAWN SCHEDULES
9000	SCHEDULES & SPECIFICATIONS

DISCLAIMER.
 This document may not be secure, may be corrupted in transmission or due to software incompatibility and/or may be amended or altered by third parties after leaving DesignInc Sydney Pty Ltd's possession. DesignInc is not responsible for and accepts no liability for such matters.
 Subject only to any conflicting provision within any prior binding agreement by DesignInc Sydney Pty Ltd (such agreement may also contain additional conditions relating to this document and its use):

- The content of this document is confidential and copyright in it belongs to DesignInc Sydney Pty Ltd. The content is permitted only to be opened, read and used by the addressee.
- Users of this document must carry out all relevant investigations and must examine, take advice as required and satisfy themselves concerning the content, correctness and sufficiency of the attachment and its contents for their purposes.
- To the extent permitted by law, all conditions and warranties concerning this document or any use to which they may be put (whether as to quality, outcome, fitness, care, skill or otherwise) whether express or implied by statute, common law, equity, trade, custom or usage or otherwise, are expressly excluded.
- Any person using or relying on document releases & indemnifies and will keep indemnified DesignInc Sydney Pty Ltd against all claims, liabilities, loss, costs and expenses arising directly or indirectly out of or in connection with such use or reliance including without limitation, any misrepresentation, error or defect in this document.
- Contractors to use Architectural drawings for set out. Contractors to check and verify all dimensions on site prior to construction / fabrication. Figured dimensions take precedence over scaled dimensions.
- Any discrepancies should be immediately referred to the Architect. All work to comply with N.C.C. statutory authorities and relevant Australian Standards.
- Refer also to the Model Disclaimer on the Cover Sheet.

No	DATE	REVISIONS	BY
1	29/06/2022	FOR INFORMATION	
2	07/07/2022	FOR INFORMATION	
3	12/07/2022	FOR INFORMATION	RF
4	18/07/2022	FOR INFORMATION	RF

ARCHITECT
DesignInc
 DesignInc Sydney Pty Ltd
 Level 14, 85 Castlereagh Street
 Sydney NSW 2000 Australia
 +61 2 8905 7100
 sydney@designinc.com.au

Nominated Architects
 Ian Armstrong 7260 | Cathryn Drew-Bredin 7269 | Richard Does 8126 | Mary Anne McGirr 10946



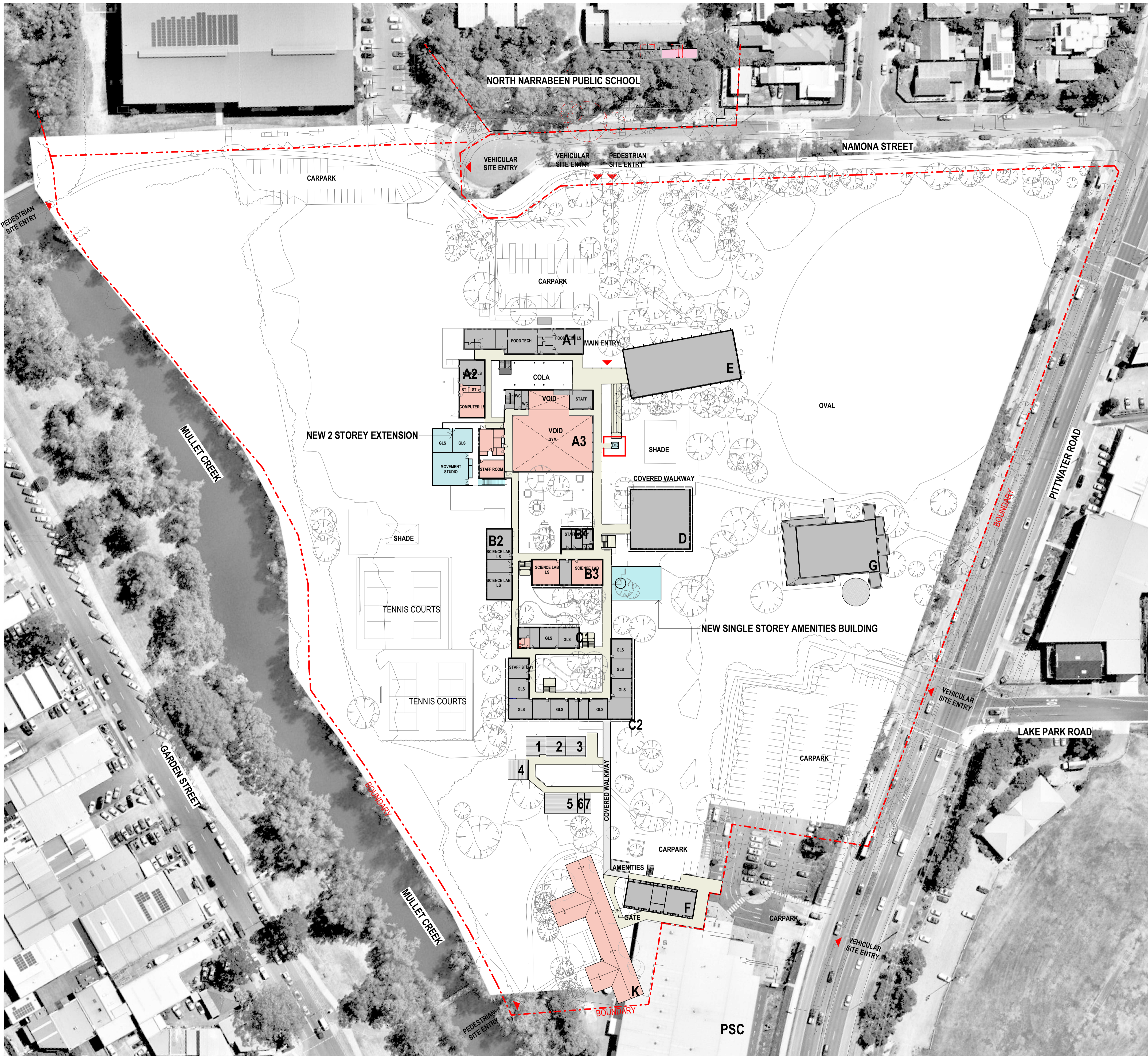
PROJECT
NARRABEEN EDUCATION PRECINCT
 NAMONA ST, NORTH NARRABEEN NSW 2101

DETAILS

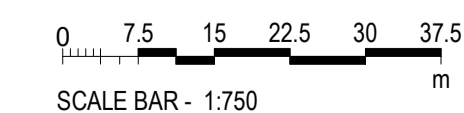
DRAWN	VB, JJ	SCALE	
CHECKED	RF		
APPROVED	CM	750 @ A1	

TITLE
SITE PLAN - SCHOOL - LEVEL 1

DRAWING NUMBER	REVISION
AR-H-0522	4



NSHS - LEVEL 1
 SCALE 1:750



FOR TREE REMOVAL DA PURPOSES ONLY

ARCHITECTURE:

- 0000 GENERAL & SITE INFORMATION
- 1000 GENERAL ARRANGEMENT PLANS
- 2000 GA RCPs
- 3000 GA SECTIONS & ELEVATIONS
- 4000 REFERENCE PLANS
- 5000 STRUCTURAL SET-OUT
- 6000 VERTICAL CIRCULATION
- 7000 INTERIOR DESIGN DETAILS
- 8000 EXTERIOR & FACADE DETAILS
- 9000 DRAWN SCHEDULES
- 9000 SCHEDULES & SPECIFICATIONS

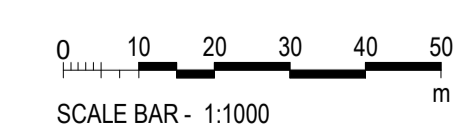
DISCLAIMER.
 This document may not be secure, may be corrupted in transmission or d software incompatibility and/or may be amended or altered by third partie after leaving Designinc Sydney Pty Ltd's possession. Designinc is not re for and accepts no liability for such matters.
 Subject only to any conflicting provision within any prior binding agreeem by Designinc Sydney Pty Ltd (such agreement may also contain addition conditions relating to this document and its use):

- The content of this document is confidential and copyright in it belon Designinc Sydney Pty Ltd. The content is permitted only to be opene and used by the addressee.
- Users of this document must carry out all relevant investigations and examine, take advice as required and satisfy themselves concerning content, correctness and sufficiency of the attachment and its conten their purposes.
- To the extent permitted by law, all conditions and warranties concern this document or any use to which they may be put (whether as to qu outcome, fitness, care, skill or otherwise) whether express or implied statute, common law, equity, trade, custom or usage or otherwise, ar expressly excluded.
- Any person using or relaying document releases & indemnifies and w indemnified, Designinc Sydney Pty Ltd against all claims, liabilities, lo costs and expenses arising directly or indirectly out of or in connectio such use or reliance including without limitation, any misrepresentati or defect in this document.
- Contractors to use Architectural drawings for set out. Contractors to c and verify all dimensions on site prior to construction / fabrication. Fig dimensions take precedence over scaled dimensions.
- Any discrepancies should be immediately referred to the Architect. A comply with N.C.C. statutory authorities and relevant Australian Stan
- Refer also to the Model Disclaimer on the Cover Sheet.

No	DATE	REVISIONS
1	29/06/2022	FOR INFORMATION
2	07/07/2022	FOR INFORMATION
3	12/07/2022	FOR INFORMATION
4	18/07/2022	FOR INFORMATION



1 ROOF PLAN -NEW SITE PLAN



FOR TREE REMOVAL DA PURPOSES ONLY

ARCHITECT
Designinc
 Designinc Sydney Pty
 Level 14, 85 Castlereas
 Sydney NSW 2000 Au
 +61 2 8905 7100
 sydney@designinc.co

Nominated Architects
 Ian Armstrong 7260 | Cathryn Drew-Bredin 7269 | Richard Does 8126 | Mary Anne McG



PROJECT
NARRABEEN EDUCATION PRECINCT
 NAMONA ST, NORTH NARRABEEN NSW 2101

DETAILS

DRAWN	CHECKED	APPROVED	SCALE
VB, JJ	RF	CM	1:1000 @ A1

TITLE
SITE PLAN - SCHOOL - ROOF PLAN

DRAWING NUMBER
AR-H-0523