

SHORT LINES		
LINE No.	BEARING	DISTANCE
1	347°09'10"	31.555
2	346°12'30"	14.855
3	343°21'30"	14.85
4	347°29'30"	14.855
5	337°38'30"	14.85
6	21°41'30"	4.22

- NOTES:**
- 1) CAUTION: SHOULD ANY DEVELOPMENT OR CONSTRUCTION BE PLANNED ON OR NEAR THE BOUNDARIES, THE BOUNDARIES SHOULD BE CLEARLY MARKED ON SITE.
 - 2) ALL AREAS AND DIMENSIONS HAVE BEEN COMPILED FROM PLANS MADE AVAILABLE AT THE LAND TITLES OFFICE.
 - 3) ORIGIN OF LEVELS ON A.H.D. IS TAKEN FROM S.S.M. 25169 RL 168.724 A.H.D.
 - 4) CONTOUR INTERVAL 0.5 METRE.
 - 5) CONTOURS ARE INDICATIVE OF GROUND FORM ONLY. ONLY SPOT LEVELS SHOULD BE USED FOR CALCULATIONS OF QUANTITIES WITH CAUTION.
 - 6) TREE SPREADS ARE DIAGRAMMATIC ONLY AND ARE NOT SYMMETRICAL.
 - 7) NO INVESTIGATION OF UNDERGROUND SERVICES HAS BEEN UNDERTAKEN.
 - 8) SPOT LEVELS ARE ACCURATE.
 - 9) BEARINGS SHOWN ARE ON M.G.A.-(MAP GRID OF AUSTRALIA).

INVESTIGATION OF 'DIAL BEFORE YOU DIG' UNDERGROUND SERVICES HAS BEEN MADE. DETECTION OF UNDERGROUND SERVICES IS NOT AN INTEGRAL PART OF THIS SURVEY. ALL RELEVANT AUTHORITIES SHOULD BE NOTIFIED PRIOR TO ANY EXCAVATION ON OR NEAR THE SITE.

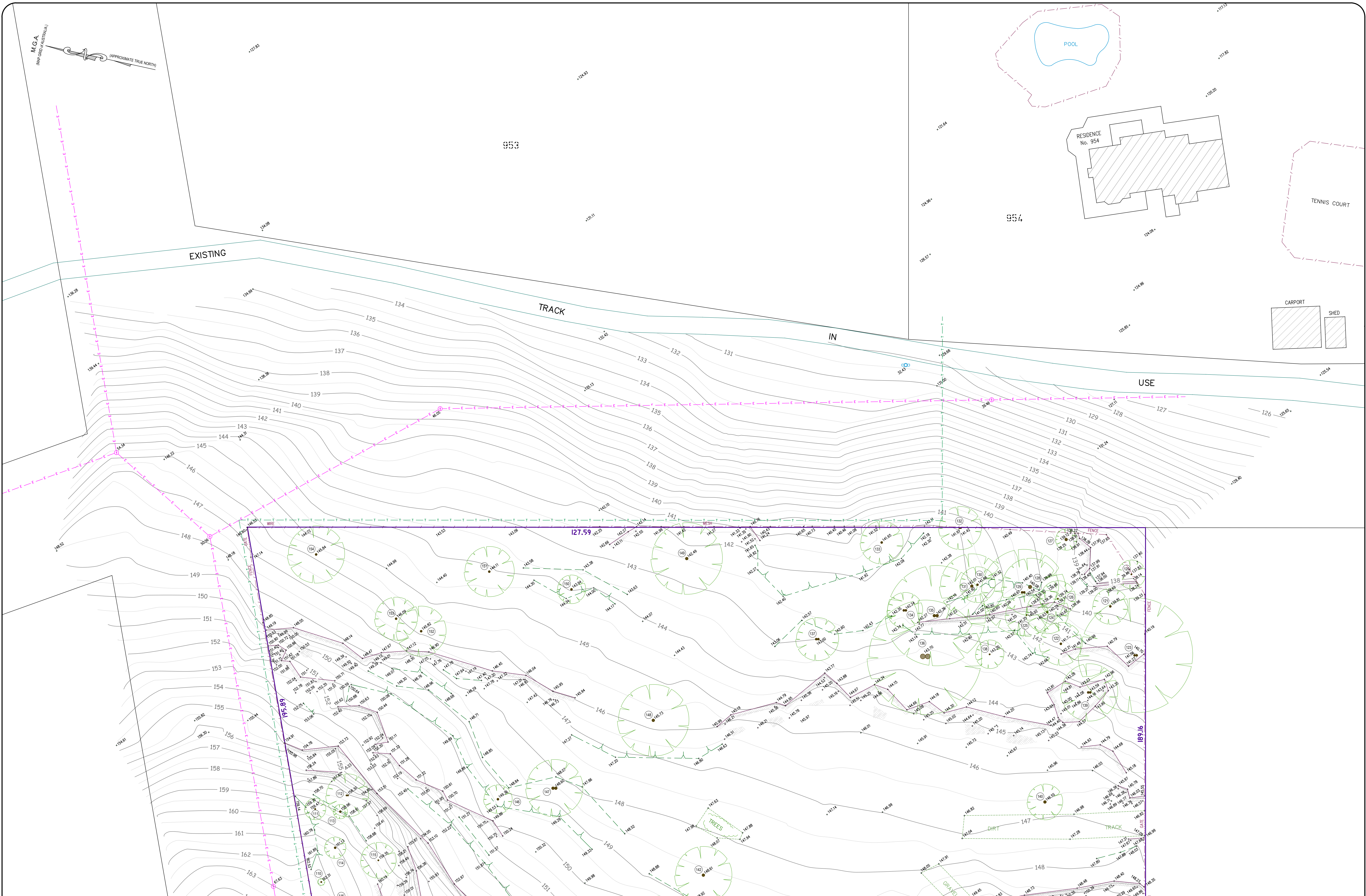
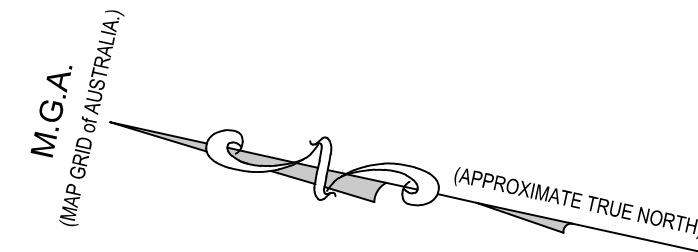
DEVELOPERS & EXCAVATORS MAY BE HELD FINANCIALLY RESPONSIBLE BY THE ASSET OWNER SHOULD THEY DAMAGE UNDERGROUND NETWORKS.

CARELESS DIGGING CAN:

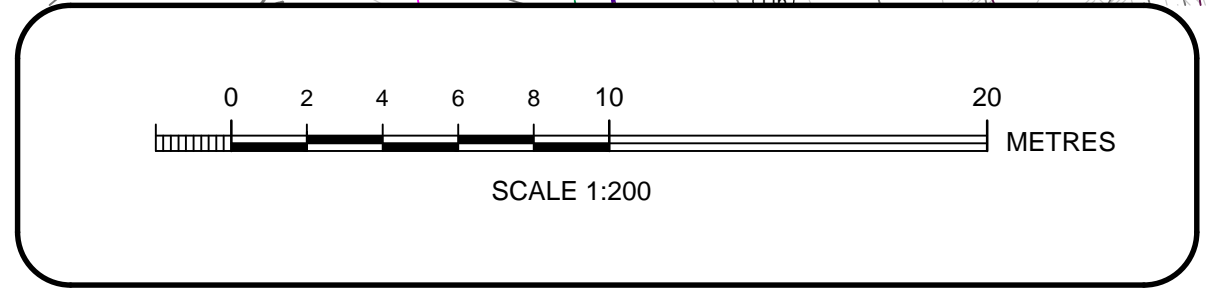
- CAUSE DEATH OR SERIOUS INJURY TO WORKERS AND THE GENERAL PUBLIC
- INCONVENIENCE USERS OF ELECTRICITY, GAS, WATER AND COMMUNICATIONS
- LEAD TO CRIMINAL PROSECUTION AND DAMAGES CLAIMS
- CAUSE EXPENSIVE FINANCIAL LOSSES TO BUSINESS
- CUT OFF EMERGENCY SERVICES
- DELAY PROJECT COMPLETION TIMES WHILE THE DAMAGE IS REPAIRED

MINIMISE YOUR RISK AND DIAL BEFORE YOU DIG.
TEL. 1100





Bee & Lethbridge Pty Ltd
 Suite 2, 14 Starkey Street,
 PO Box 330, Forestville, NSW 2087
 Phone: 9451 6757 Fax: 9975 3535
 Email: survey@beeleth.com.au
 ABN: 13 003 194 447
 www.beeleth.com.au



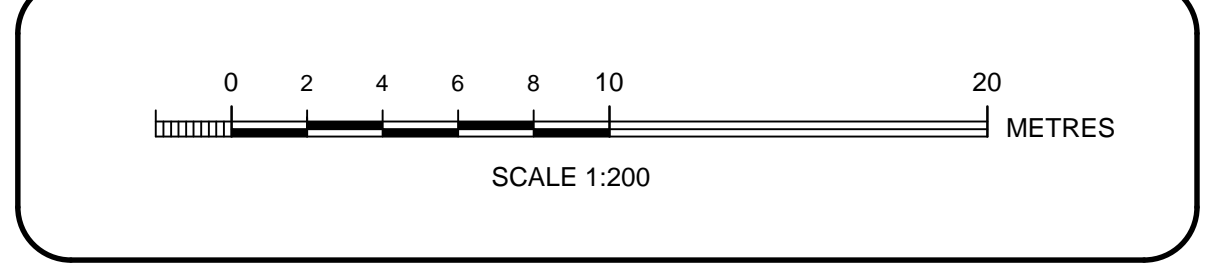
LEGEND

(40) TREE POINT NUMBER	○ OVERHEAD ELECTRIC LINES	○ LIGHT POLE	✕ STOP VALVE	□ DRAINAGE PIT
— GUTTER	— UNDERGROUND ELECTRIC LINES	○ POWER POLE	● HYDRANT	○ GRATE
— DENOTES CENTRE LINE OF ROAD	— WATER LINES	○ SIGN	⊕ TAP	○ GRATED DRAIN
— DENOTES TOP OF GUTTER	— TELSTRA LINES	○ TRAFFIC SIGNAL PIT	○ WATER METER	○ SEWER ACCESS CHAMBER
— ROCK	— SEWER LINES		○ TELSTRA PIT	○ GAS LID
— GAS LINES	— STORMWATER LINES			

PLAN SHOWING BOUNDARIES, RELATIVE HEIGHTS & PHYSICAL FEATURES OVER LOT 3 IN D.P. 805710 KNOWN AS NO. 181 FOREST WAY, BELROSE.

L.G.A.: WARRINGAH

CLIENT	Ms BONNIE HOLMAN	REF No.	19442
PROPERTY	No. 181 FOREST WAY, BELROSE	SHEET No.	2 of 7
DATUM	A.H.D.	SCALE	1:200 @ B1
SURVEYED	J.O.	DATE	14/04/2016
		DWG No.	19442
		REV No.	00



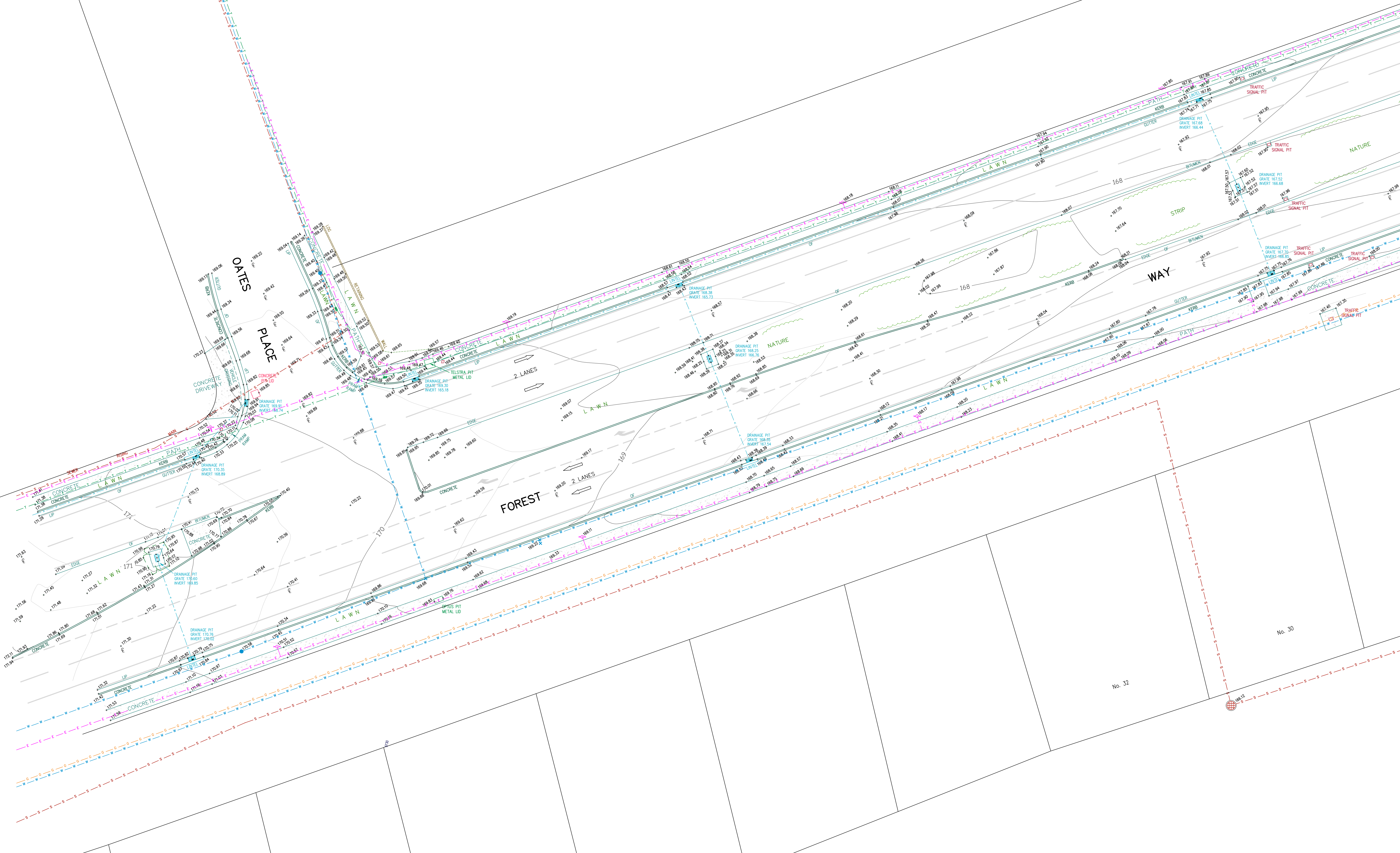
LEGEND	
(40) TREE POINT NUMBER	○ HEAD ELECTRIC LINES
○ DENOTES CENTRE LINE OF ROAD	○ U/GROUND ELECTRIC LINES
○ DENOTES TOP OF GUTTER	○ WATER LINES
○ ROOF	○ TELSTRA LINES
○ GAS LINES	○ SEWER LINES
○	○ STORMWATER LINES

○ LIGHT POLE	○ STOP VALVE	○ DRAINAGE PIT
○ POWER POLE	○ HYDRANT	○ GRATE
○ ELECTRICITY PILLAR	○ TAP	○ GRATED DRAIN
○ SIGN	○ WATER METER	○ SEWER ACCESS CHAMBER
○ TRAFFIC SIGNAL PIT	○ TELSTRA PIT	○ GAS LID

PLAN SHOWING BOUNDARIES, RELATIVE HEIGHTS &
 PHYSICAL FEATURES OVER LOT 3 IN D.P. 805710
 KNOWN AS No. 181 FOREST WAY, BELROSE.
 L.G.A.: WARRINGAH

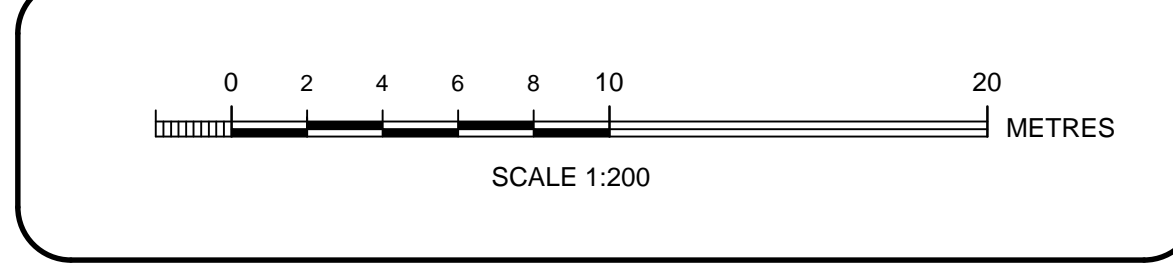
CLIENT	Ms BONNIE HOLMAN			REF No.	19442
PROPERTY	No. 181 FOREST WAY, BELROSE			SHEET No.	3 of 7
DATUM	A.H.D.	SCALE	1:200 @ B1	DATE	14/04/2016
SURVEYED	J.O.	DRAWN	J.M.	DWG No.	19442
				REV No.	00

M.G.A.
(IMP. END OF CONTRACT)
APPROXIMATE TRUE NORTH



Bee & Lethbridge
Quality Surveying & Development Solutions

Bee & Lethbridge Pty Ltd
Suite 2, 14 Starkey Street,
PO Box 330, Forestville, NSW 2087
Phone: 9451 6757 Fax: 9975 3535
Email: survey@beelth.com.au
ABN: 13 003 194 447
www.beelth.com.au



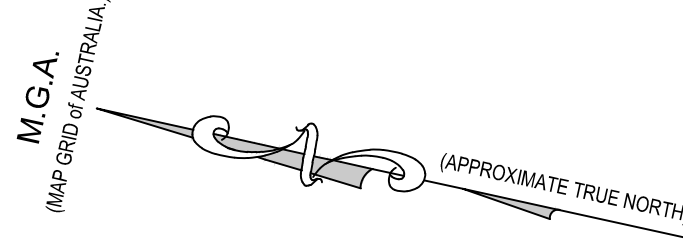
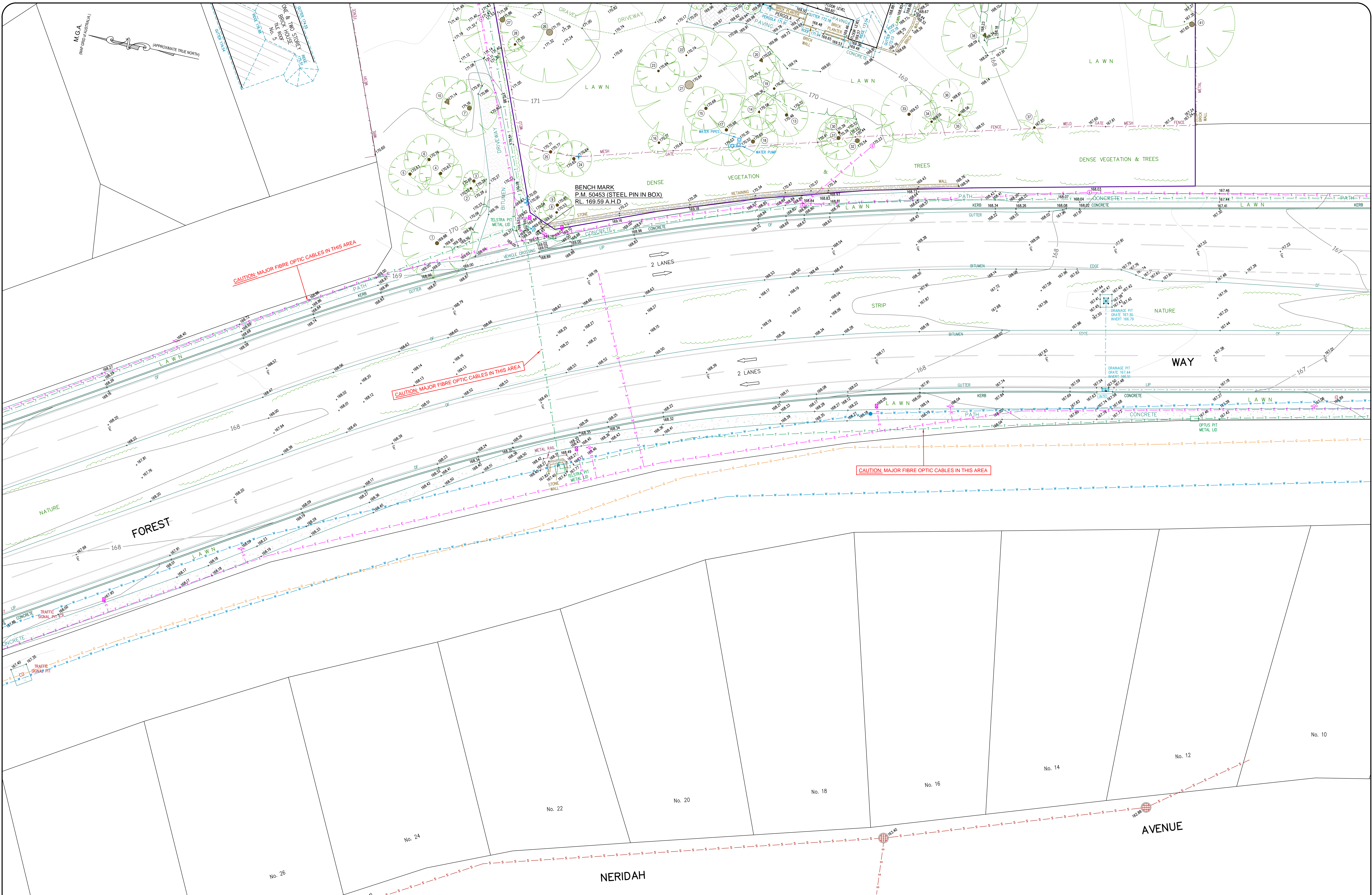
LEGEND

(40)	TREE POINT NUMBER	○	HEAD ELECTRIC LINES
⊕	DENOTES CENTRE LINE OF ROAD	○	UNDERGROUND ELECTRIC LINES
—	DENOTES TOP OF GUTTER	—	WATER LINES
—	ROCK	—	TELSTRA LINES
—	GAS LINES	—	SEWER LINES
—		—	STORMWATER LINES

○	LIGHT POLE	⊗	STOP VALVE	□	DRAINAGE PIT
○	POWER POLE	⊕	HYDRANT	○	GRATE
⊕	ELECTRICITY PILLAR	⊕	TAP	□	GRATED DRAIN
○	TRAFFIC SIGNAL PIT	○	WATER METER	⊕	SEWER ACCESS CHAMBER
		⊕	TELSTRA PIT	⊕	GAS LID

PLAN SHOWING BOUNDARIES, RELATIVE HEIGHTS & PHYSICAL FEATURES OVER LOT 3 IN D.P. 805710 KNOWN AS No. 181 FOREST WAY, BELROSE.
L.G.A.: WARRINGAH

CLIENT	Ms BONNIE HOLMAN	REF No.	19442
PROPERTY	No. 181 FOREST WAY, BELROSE	SHEET No.	4 of 7
DATUM	A.H.D.	SCALE	1:200 @ B1
SURVEYED	J.O.	DATE	14/04/2016
DRAWN	J.M.	DWG No.	19442
		REV No.	00



CAUTION: MAJOR FIBRE OPTIC CABLES IN THIS AREA

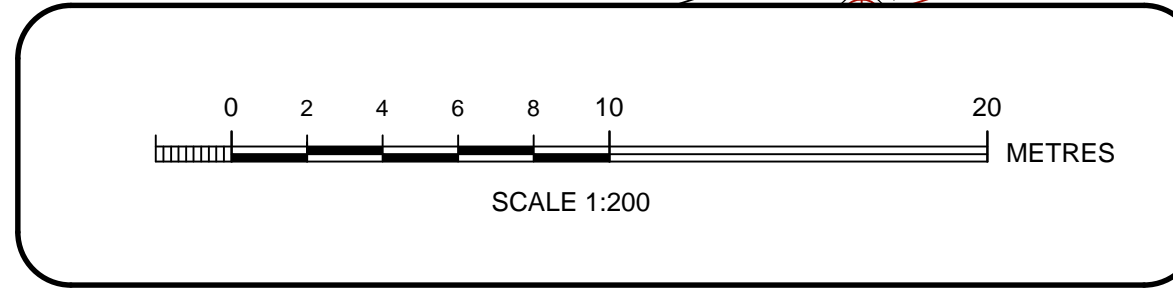
CAUTION: MAJOR FIBRE OPTIC CABLES IN THIS AREA

CAUTION: MAJOR FIBRE OPTIC CABLES IN THIS AREA

BENCH MARK
P.M. 50453 (STEEL PIN IN BOX)
R.L. 169.59 A.H.D.

Bee & Lethbridge
Quality Surveying & Development Solutions

Bee & Lethbridge Pty Ltd
Suite 2, 14 Starkey Street,
PO Box 330, Forestville, NSW 2087
Phone: 9451 6757 Fax: 9975 3535
Email: survey@beelth.com.au
ABN: 13 003 194 447
www.beelth.com.au



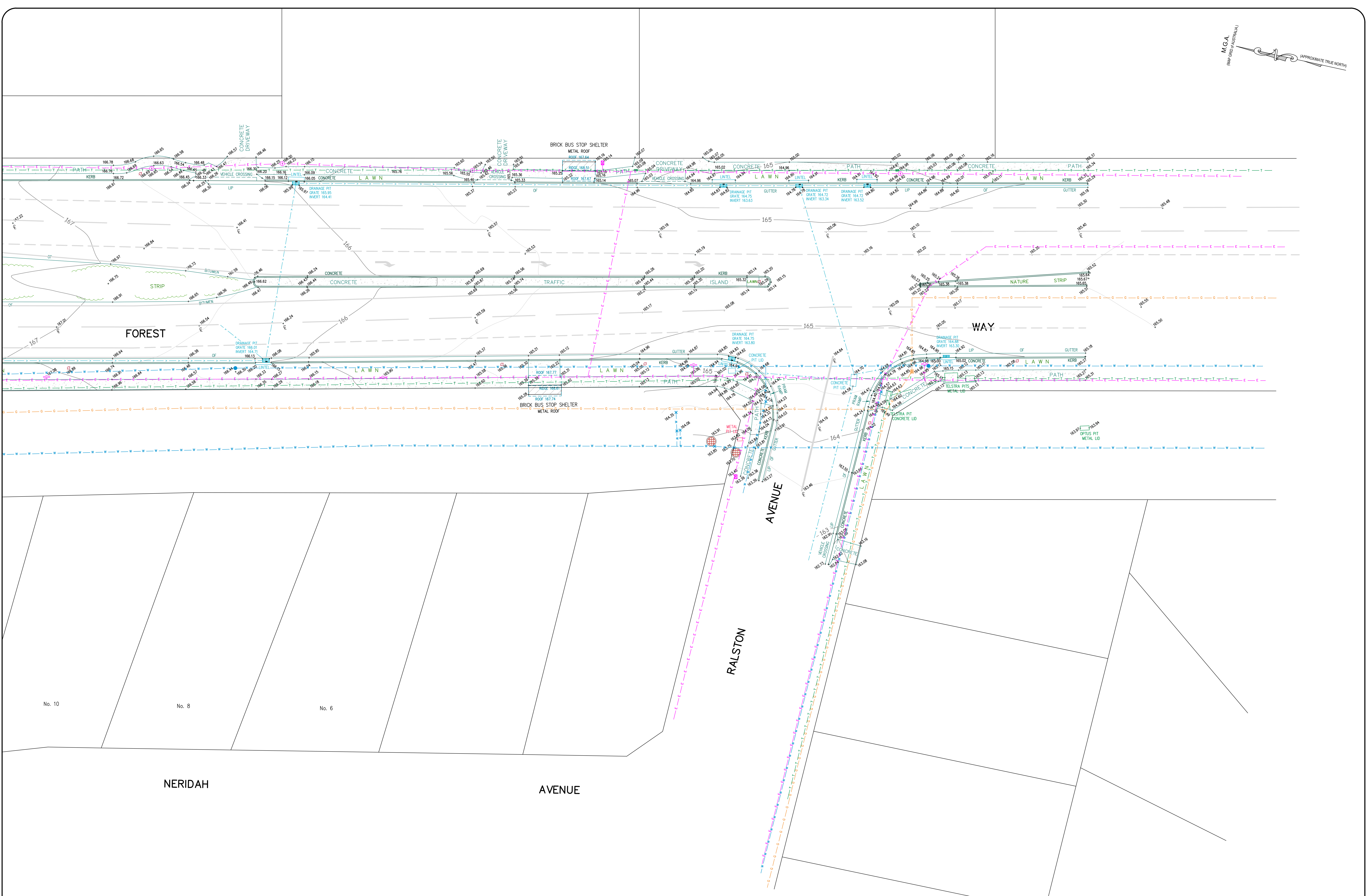
LEGEND	
(40)	TREE POINT NUMBER
⊕	DENOTES CENTRE LINE OF ROAD
⊕	DENOTES TOP OF GUTTER
—	ROCK
—	GAS LINES
—	OVERHEAD ELECTRIC LINES
—	UNDERGROUND ELECTRIC LINES
—	WATER LINES
—	TELSTRA LINES
—	SEWER LINES
—	STORMWATER LINES

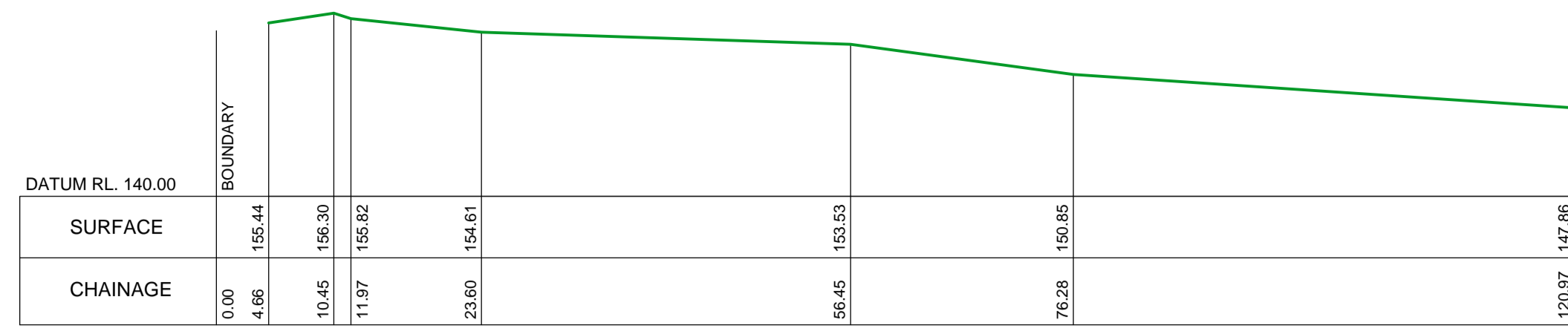
⊕	LIGHT POLE	⊕	STOP VALVE	⊕	DRAINAGE PIT
⊕	POWER POLE	⊕	HYDRANT	⊕	GRATE
⊕	ELECTRICITY PILLAR	⊕	TAP	⊕	GRATED DRAIN
⊕	TRAFFIC SIGNAL PIT	⊕	WATER METER	⊕	SEWER ACCESS CHAMBER
⊕	TELSTRA PIT	⊕	GAS LID		

PLAN SHOWING BOUNDARIES, RELATIVE HEIGHTS & PHYSICAL FEATURES OVER LOT 3 IN D.P. 805710 KNOWN AS No. 181 FOREST WAY, BELROSE.

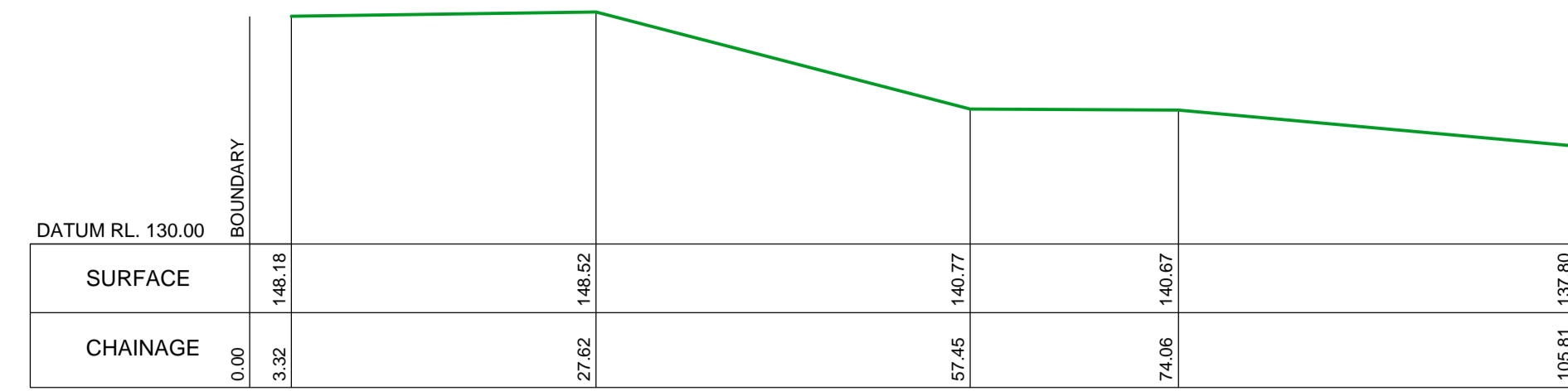
L.G.A.: WARRINGAH

CLIENT	Ms BONNIE HOLMAN	REF No.	19442
PROPERTY	No. 181 FOREST WAY, BELROSE		
DATUM	A.H.D.	SCALE	1:200 @ B1
SURVEYED	J.O.	DATE	14/04/2016
		DRAWN	J.M.
		DWG No.	19442
		SHEET No.	5 of 7
		REV No.	00

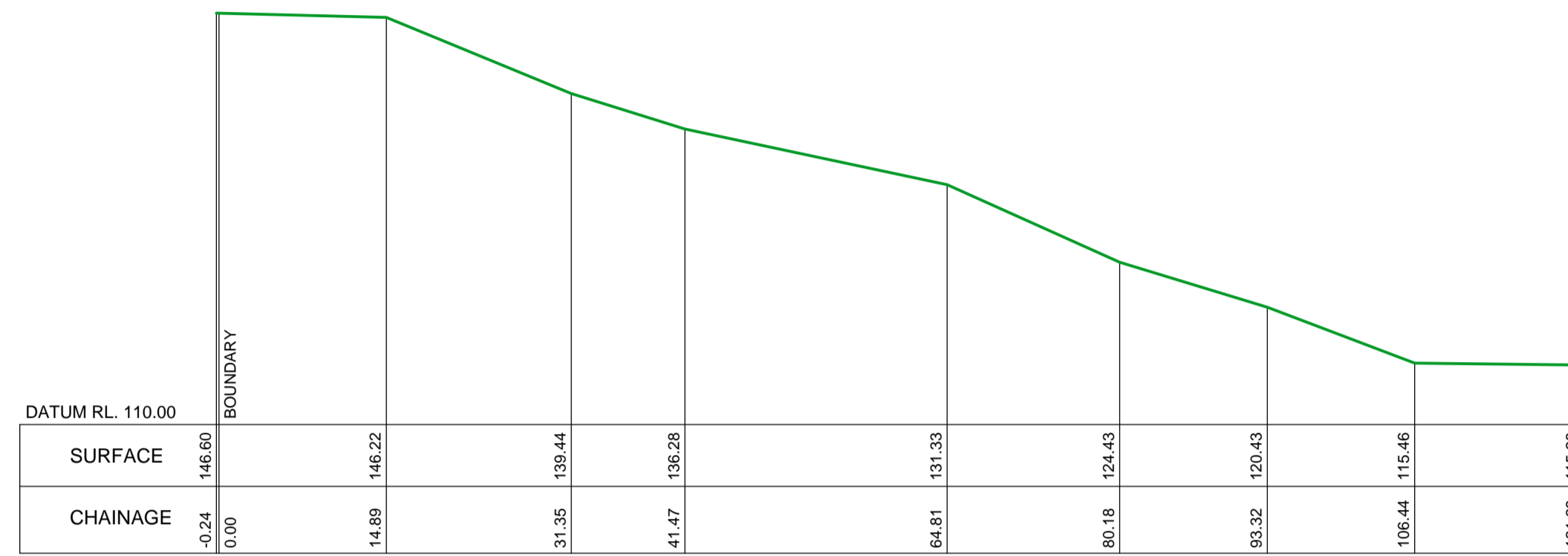




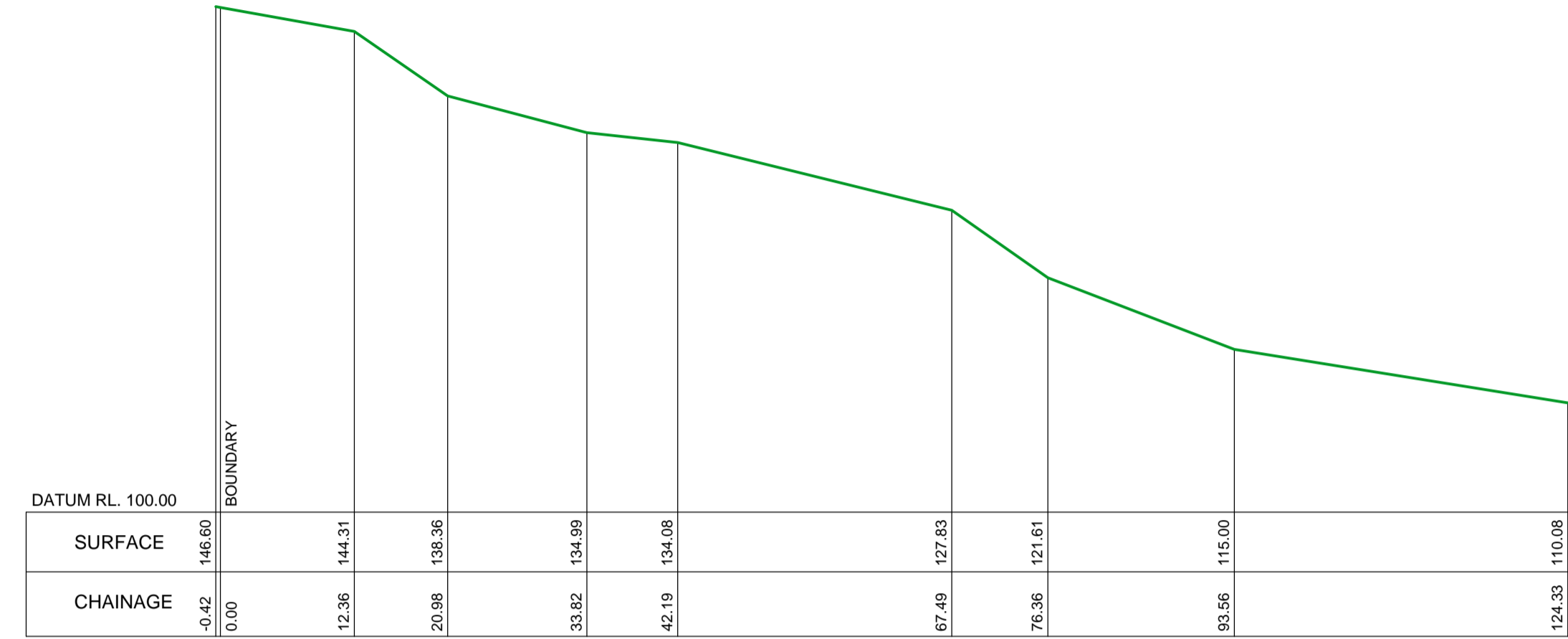
TRANSECTION LINE 1
HORIZONTAL 1:500 VERTICAL 1:500



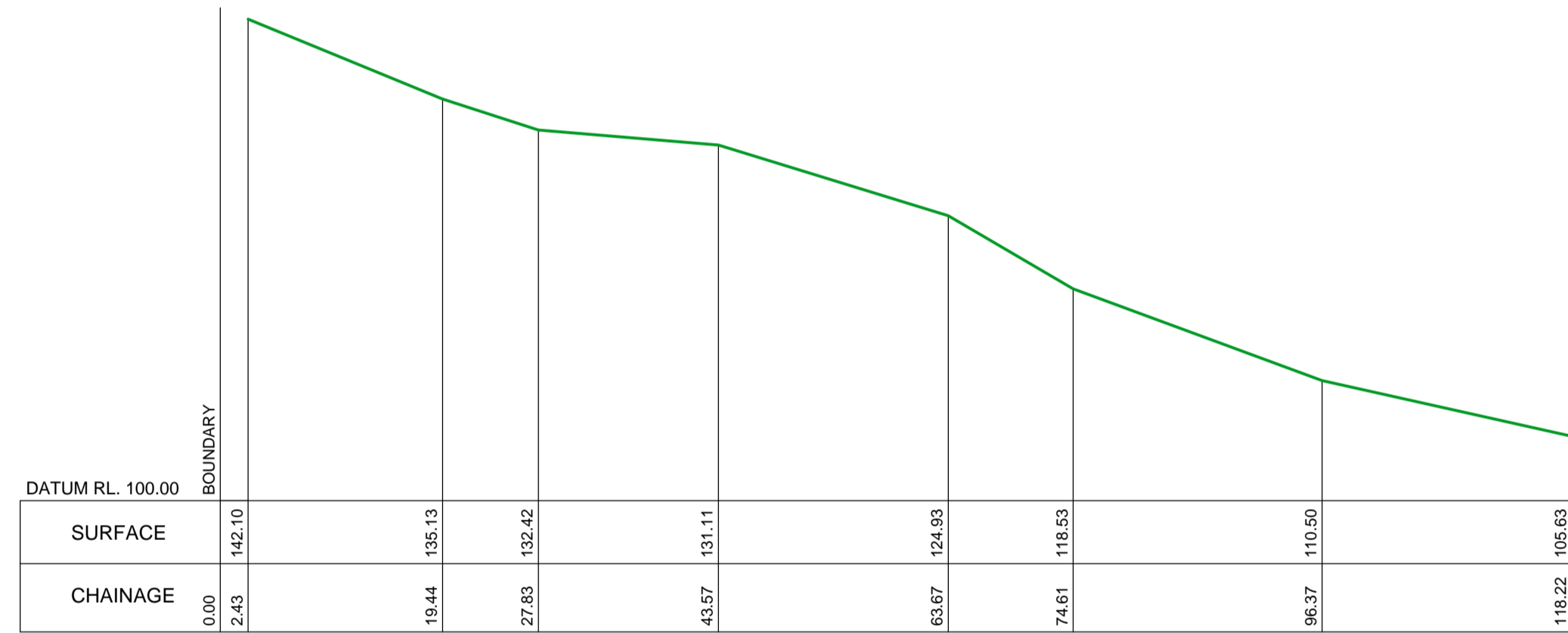
TRANSECTION LINE 2
HORIZONTAL 1:500 VERTICAL 1:500



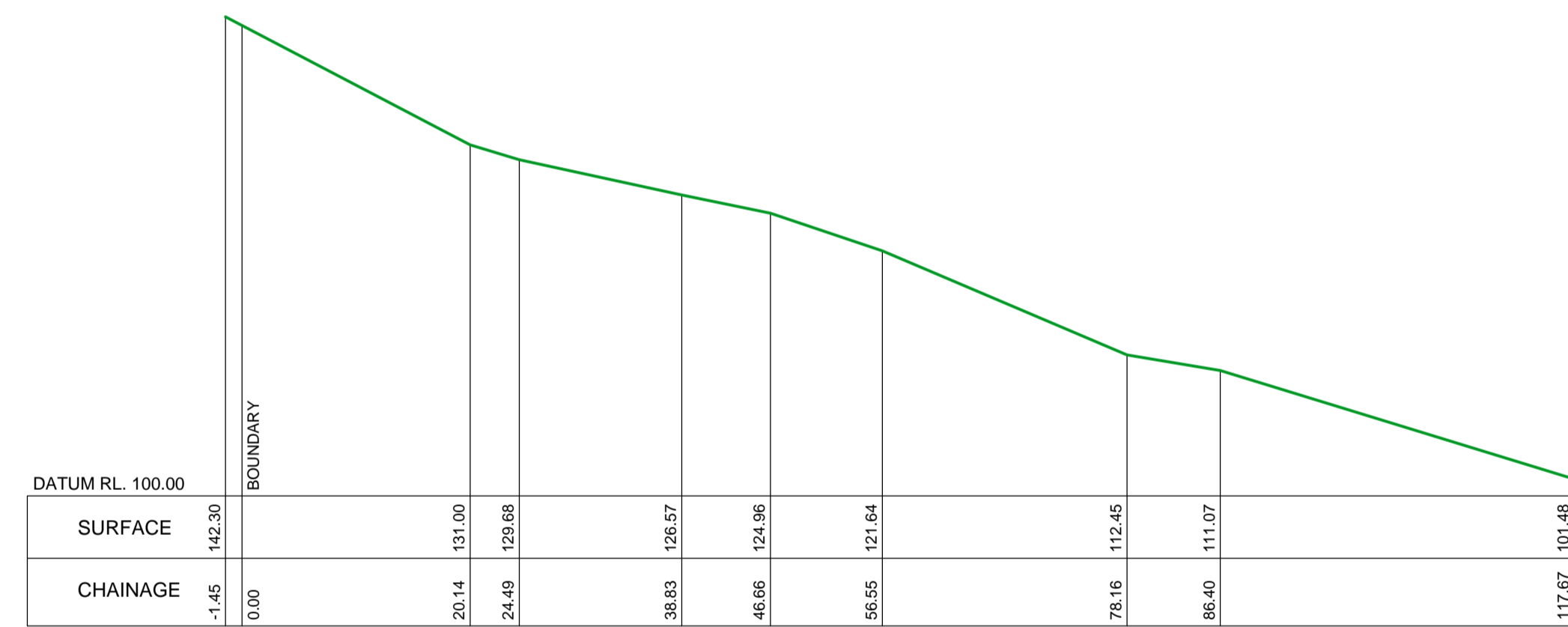
TRANSECTION LINE 3
HORIZONTAL 1:500 VERTICAL 1:500



TRANSECTION LINE 4
HORIZONTAL 1:500 VERTICAL 1:500



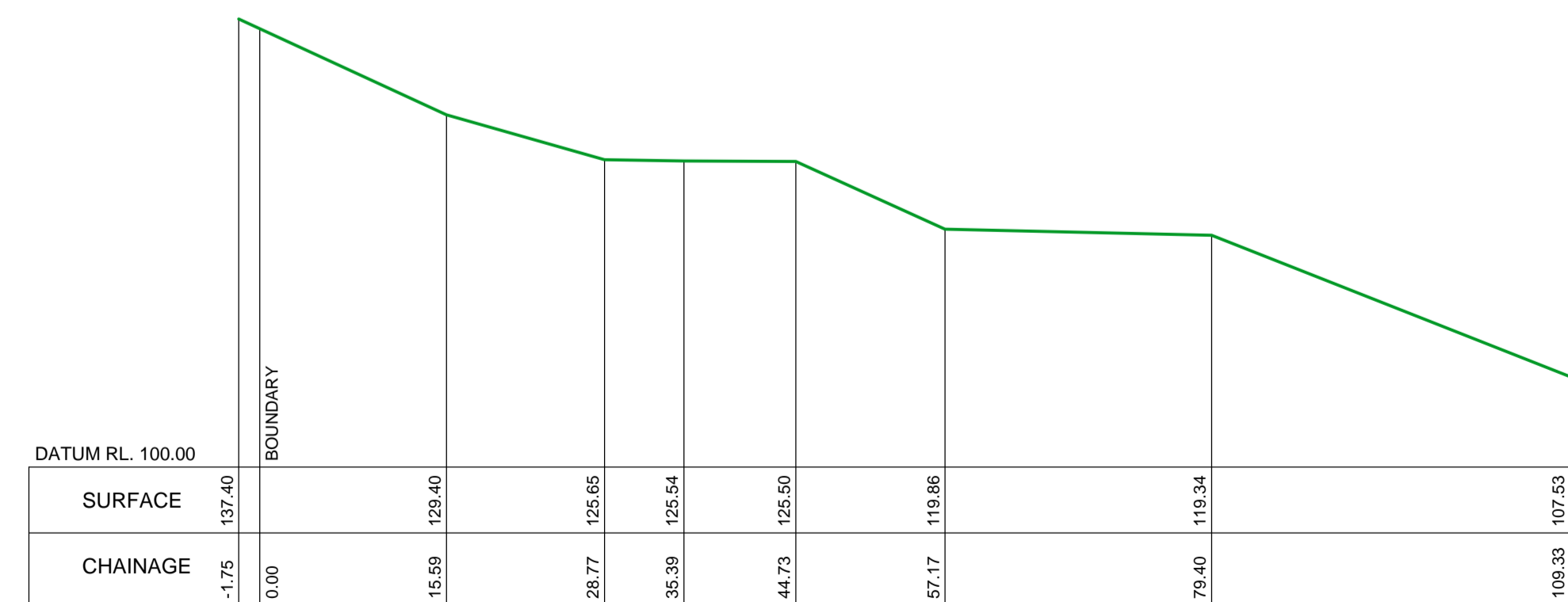
TRANSECTION LINE 5
HORIZONTAL 1:500 VERTICAL 1:500



TRANSECTION LINE 6
HORIZONTAL 1:500 VERTICAL 1:500



TRANSECTION LINE 7
HORIZONTAL 1:500 VERTICAL 1:500



TRANSECTION LINE 8
HORIZONTAL 1:500 VERTICAL 1:500