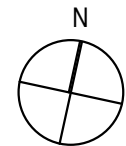


- NEW TREE  
REFER TO LANDSCAPE DOCUMENTATION
- EXISTING TREE TO REMAIN  
REFER TO ARBORIST REPORT
- EXTENT OF PLANTING  
REFER TO LANDSCAPE DOCUMENTATION



© Copyright  
 These drawings and designs and the copyright thereof are the property of **Morrison Design Partnership Pty. Ltd.** and must not be used retained or copied without the written permission of Morrison Design Partnership Pty. Ltd. ACN 001 595 288.

APPLICANT: CHIROSEPH PTY LTD  
 PO BOX 267  
 ST LEONARDS NSW 2065

PROJECT: BELROSE MANOR  
 RESIDENTIAL AGED CARE FACILITY  
 181 FOREST WAY  
 BELROSE NSW 2085

DRAWING TITLE: NOTIFICATION SITE PLAN

REV	DATE	AMENDMENT	INITIALS	CHECK
A	20170626	DEVELOPMENT APPLICATION	JM/DT	VC
B	20180831	DEVELOPMENT APPLICATION RE-SUBMISSION	JT	VC

PROJECT NO.	DWG NO.	REVISION
2951	DA010	B
SCALE	NTS	
ARCHITECT	VEE CHIN	
PROJECT DIRECTOR	M RALPH	
DATE	APRIL 2017	



architecture  
 interior design  
 project management

NEW ARR REG ARCHITECT, G. OLLERTON #721  
 ACN 001 595 288 PBN 44 001 295 268 morrisondesign@mdp.com.au  
 Suite 302 49 Christie Street St. Leonards NSW 2065 (02 99665564) www.mdp.com.au

Q:\2061-Forest Way Belrose-drafting use\WORKING\Revit\Forest Way Belrose building CENTRAL\_1\16.rvt



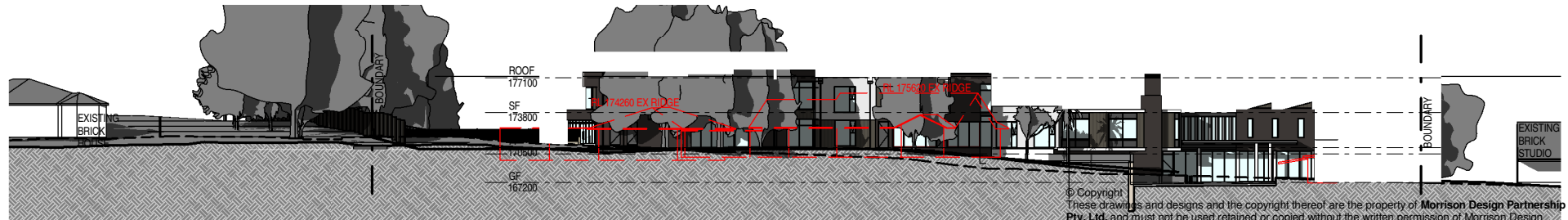
EAST ELEVATION



NORTH ELEVATION



SOUTH ELEVATION



WEST ELEVATION

© Copyright  
 These drawings and designs and the copyright thereof are the property of Morrison Design Partnership Pty. Ltd. and must not be used retained or copied without the written permission of Morrison Design Partnership Pty. Ltd. ACN 001 595 288.

APPLICANT	PROJECT	DRAWING TITLE
CHIROSEPH PTY LTD PO BOX 267 ST LEONARDS NSW 2065	<b>BELROSE MANOR</b> RESIDENTIAL AGED CARE FACILITY 181 FOREST WAY BELROSE NSW 2085	NOTIFICATION ELEVATIONS

REV	DATE	AMENDMENT	INITIALS	CHECK
A	20170626	DEVELOPMENT APPLICATION	JM/DT	VC
B	20180831	DEVELOPMENT APPLICATION RE-SUBMISSION	JT	VC

PROJECT NO.	DWG NO.	REVISION
<b>2951</b>	<b>DA011</b>	<b>B</b>
SCALE	NTS	
ARCHITECT	VEE CHIN	
PROJECT DIRECTOR	M RALPH	
DATE	APRIL 2017	



architecture  
 interior design  
 project management

NEW ARCH REG ARCHITECT, G. OLLERTON #7921  
 ACN 130 595 288 ABN 44 001 595 288 morrisondesign@mdpdp.com.au  
 Suite 302 49 Christie Street St. Leonards NSW 2065 (02 99665564) www.mdpdp.com.au

Q:\2951-Forest Way Belrose-drafting user\WORKING\Revit\Forest Way Belrose building CENTRAL\_V16.rvt