

West Elevation

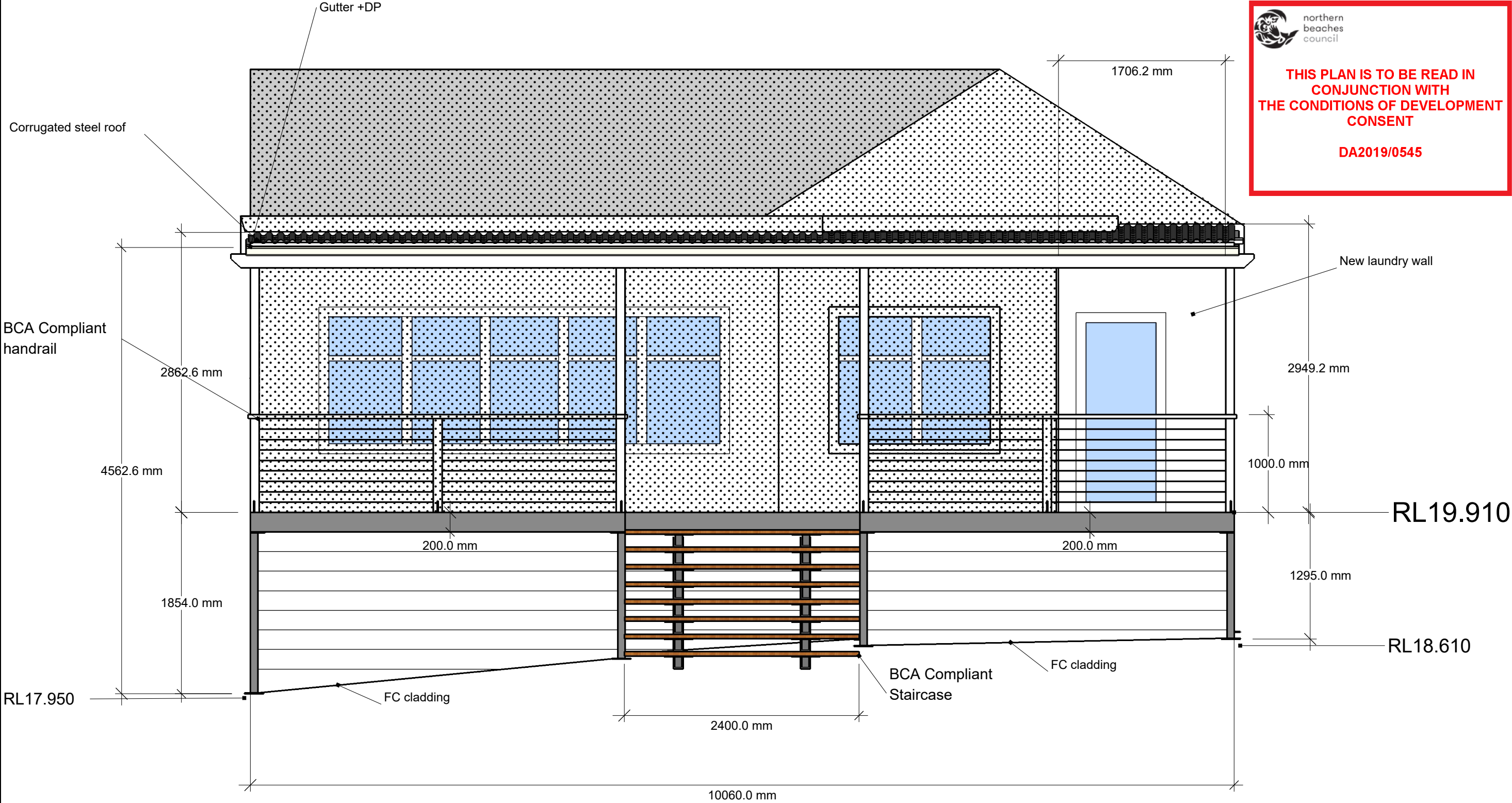
Existing building



northern
beaches
council

THIS PLAN IS TO BE READ IN
CONJUNCTION WITH
THE CONDITIONS OF DEVELOPMENT
CONSENT

DA2019/0545



REVISIONS			GENERAL NOTES:	GENERAL NOTES:	CLIENT:	PROJECT:	DWG NO:	DRAWN BY	SCALE @ A3	A 02
	MM/DD/YY	REMARKS								
1	23/08/18	Preliminary	1. All bolts, nuts and washers to be galvanised grade 8.8 in accordance with AS1252	7. Butt weld all flanges and mitre cuts						
2	15/09/18	For Approval	2. All workmanship and materials shall be in accordance with AS4100	8. Surface treatment: Refer to specifications						
3	--/--/--	...	3. Unless shown as a bolted connection, all plates and sections indicated in contact with each other shall be welded all round UNO	9. All member and connection 2mm workloose, all base plate holes include 4mm workloose						
4	--/--/--	...	4. All welds to be in accordance with AS1554 UNO	10. No paint within 50mm of a site weld and TF bolted connections						
5	--/--/--	...	5. All welds to be 6mm continuous fillet welds	11. No allowance has been made for weld gaps						
			6. All butt welds to be full penetration butt welds in accordance with AS1554 part 1	12. DO NOT SCALE- IF IN DOUBT ASK						

MARCO		STEEL	
Ph. 9938 2966			
estimator@marco.com.au			

*Henderson	
* 49 Wakehurst Parkway, Seaforth	
* 4998-230818	MH
NTS	
Tolerance s. U.N.O.	
Tolerances to one decimal+-0.5	
Angular Tolerance +-0.5 DEG	

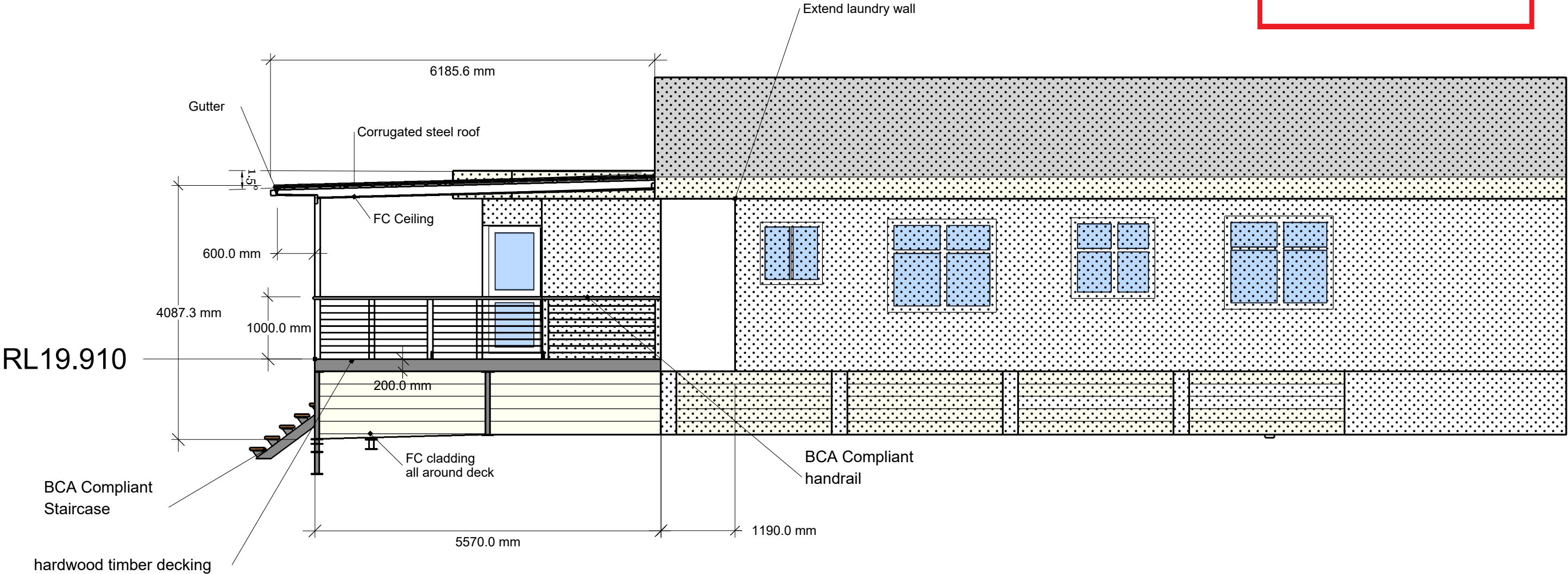
South Elevation



northern
beaches
council

THIS PLAN IS TO BE READ IN
CONJUNCTION WITH
THE CONDITIONS OF DEVELOPMENT
CONSENT

DA2019/0545



REVISIONS		
	MM/DD/YY	REMARKS
1	23/08/18	Preliminary
2	15/09/18	For Approval
3	---	---
4	---	---
5	---	---

- GENERAL NOTES:
1. All bolts, nuts and washers to be galvanised grade 8.8 in accordance with AS1252
 2. All workmanship and materials shall be in accordance with AS4100
 3. Unless shown as a bolted connection, all plates and sections indicated in contact with each other shall be welded all round UNO
 4. All welds to be in accordance with AS1554 UNO
 5. All welds to be 6mm continuous fillet welds
 6. All butt welds to be full penetration butt welds in accordance with AS1554 part 1

- GENERAL NOTES:
7. Butt weld all flanges and mitre cuts
 8. Surface treatment: Refer to specifications
 9. All member and connection 2mm workloose, all base plate holes include 4mm workloose
 10. No paint within 50mm of a site weld and TF bolted connections
 11. No allowance has been made for weld gaps
 12. DO NOT SCALE- IF IN DOUBT ASK

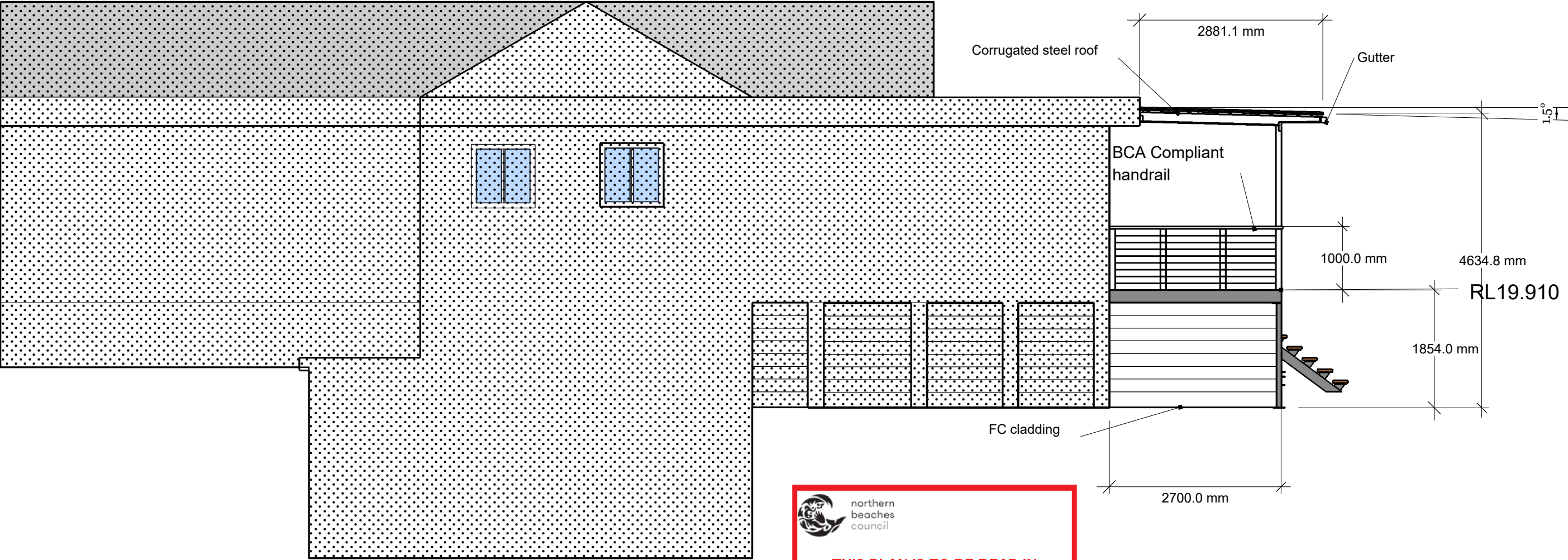
MARCO
STEEL
Ph. 9938 2966
estimator@marco.com.au

CLIENT:	*Henderson		
PROJECT:	* 49 Wakehurst Parkway, Seaforth		
DWG NO:	* 4998-230818	DRAWN BY	SCALE @ A3
		MH	NTS
Tolerance s. U.N.O.			
Tolerances to one decimal+/-0.5			
Angular Tolerance +/-0.5 DEG			

North Elevation



Existing building



REVISIONS		
	MM/DD/YY	REMARKS
1	23/08/18	Preliminary
2	15/09/18	For Approval
3	---/---/---	...
4	---/---/---	...
5	---/---/---	...

- GENERAL NOTES:
1. All bolts, nuts and washers to be galvanised grade 8.8 in accordance with AS1252
 2. All workmanship and materials shall be in accordance with AS4100
 3. Unless shown as a bolted connection, all plates and sections indicated in contact with each other shall be welded all round UNO
 4. All welds to be in accordance with AS1554 UNO
 5. All welds to be 6mm continuous fillet welds
 6. All butt welds to be full penetration butt welds in accordance with AS1554 part 1

- GENERAL NOTES:
7. Butt weld all flanges and mitre cuts
 8. Surface treatment: Refer to specifications
 9. All member and connection 2mm workloose, all base plate holes include 4mm workloose
 10. No paint within 50mm of a site weld and TF bolted connections
 11. No allowance has been made for weld gaps
 12. DO NOT SCALE- IF IN DOUBT ASK

MARCO STEEL

Ph. 9938 2966

estimator@marco.com.au

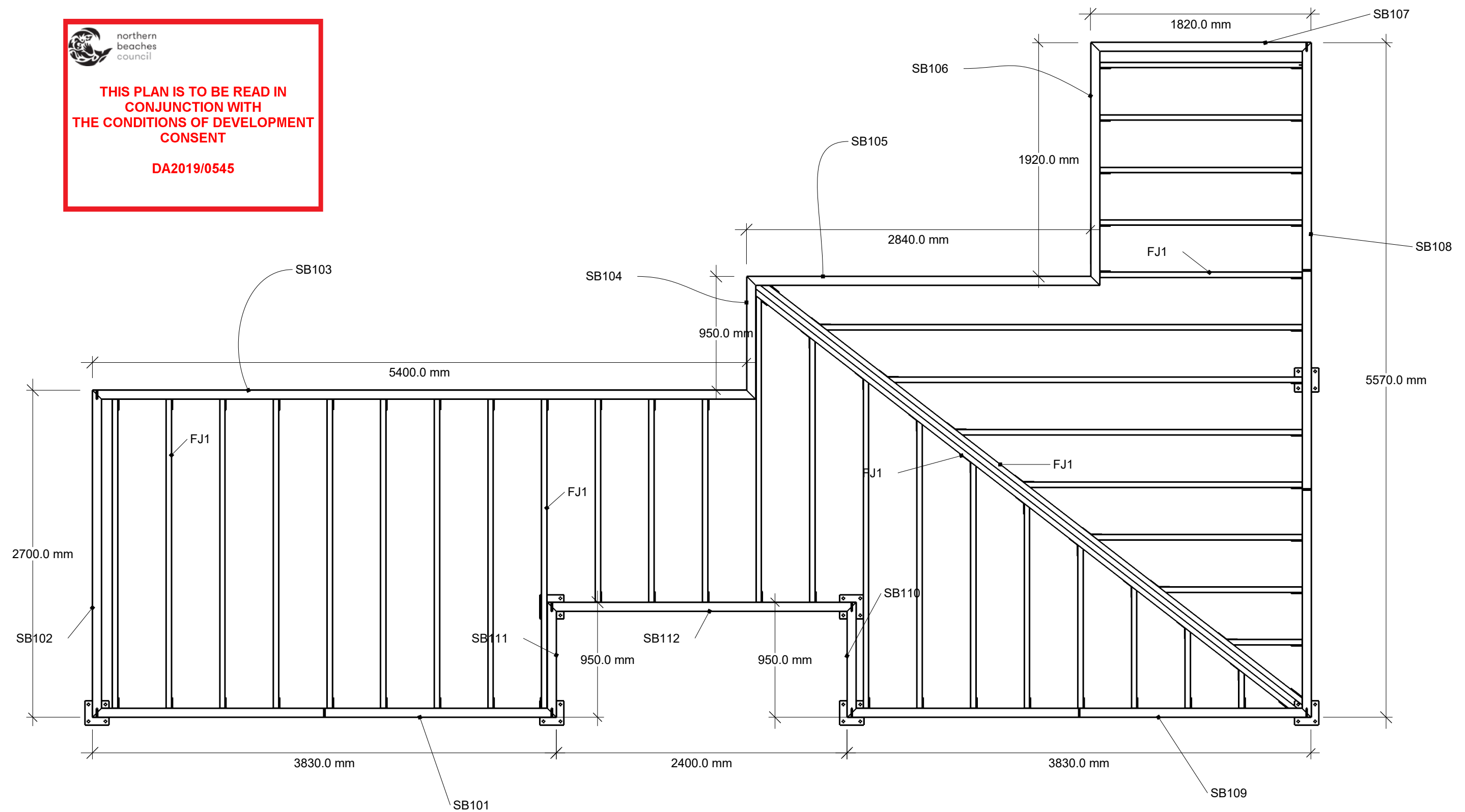
CLIENT: *Henderson		
PROJECT: * 49 Wakehurst Parkway, Seaforth		
DWG NO: * 4998-230818	DRAWN BY MH	SCALE @ A3 NTS
Tolerance s. U.N.O. Tolerances to one decimal+-0.5 Angular Tolerance +-0.5 DEG		



northern
beaches
council

THIS PLAN IS TO BE READ IN
CONJUNCTION WITH
THE CONDITIONS OF DEVELOPMENT
CONSENT

DA2019/0545



Deck Ground Floor Plan

REVISIONS			GENERAL NOTES:			MARCO STEEL Ph. 9938 2966 estimator@marco.com.au			CLIENT: *Henderson		
MM/DD/YY		REMARKS							PROJECT: * 49 Wakehurst Parkway, Seaforth		
1	23/08/18	Preliminary	<div>1. All bolts, nuts and washers to be galvanised grade 8.8 in accordance with AS1252</div> <div>2. All workmanship and materials shall be in accordance with AS4100</div> <div>3. Unless shown as a bolted connection, all plates and sections indicated in contact with each other shall be welded all round UNO</div> <div>4. All welds to be in accordance with AS1554 UNO</div> <div>5. All welds to be 6mm continuous fillet welds</div> <div>6. All butt welds to be full penetration butt welds in accordance with AS1554 part 1</div> <div>7. Butt weld all flanges and mitre cuts</div> <div>8. Surface treatment: Refer to specifications</div> <div>9. All member and connection 2mm workloose, all base plate holes include 4mm workloose</div> <div>10. No paint within 50mm of a site weld and TF bolted connections</div> <div>11. No allowance has been made for weld gaps</div> <div>12. DO NOT SCALE- IF IN DOUBT ASK</div>			DWG NO: * 4998-230818			DRAWN BY: MH		SCALE @ A3: NTS
2	15/09/18	For Approval									
3	--/--/--	...									
4	--/--/--	...									
5	--/--/--	...									

A 07