

FREMONT[®]

Pittwater RSL Club - Pylon & External Signage

NOTE:

BOUNDARIES HAVE BEEN DETERMINED BY SURVEY ON 22-05-2023.

PRIOR TO ANY CONSTRUCTION WORK, SURVEY MARKS SHOULD BE PLACED TO DEFINE THE PROPERTY BOUNDARIES.

SERVICES SHOWN ARE INDICATIVE ONLY. POSITIONS ARE BASED ON SURFACE INDICATOR(S) LOCATED DURING FIELD SURVEY. CONFIRMATION OF THE EXACT POSITION SHOULD BE MADE PRIOR TO ANY EXCAVATION WORK. OTHER SERVICES MAY EXIST WHICH ARE NOT SHOWN.

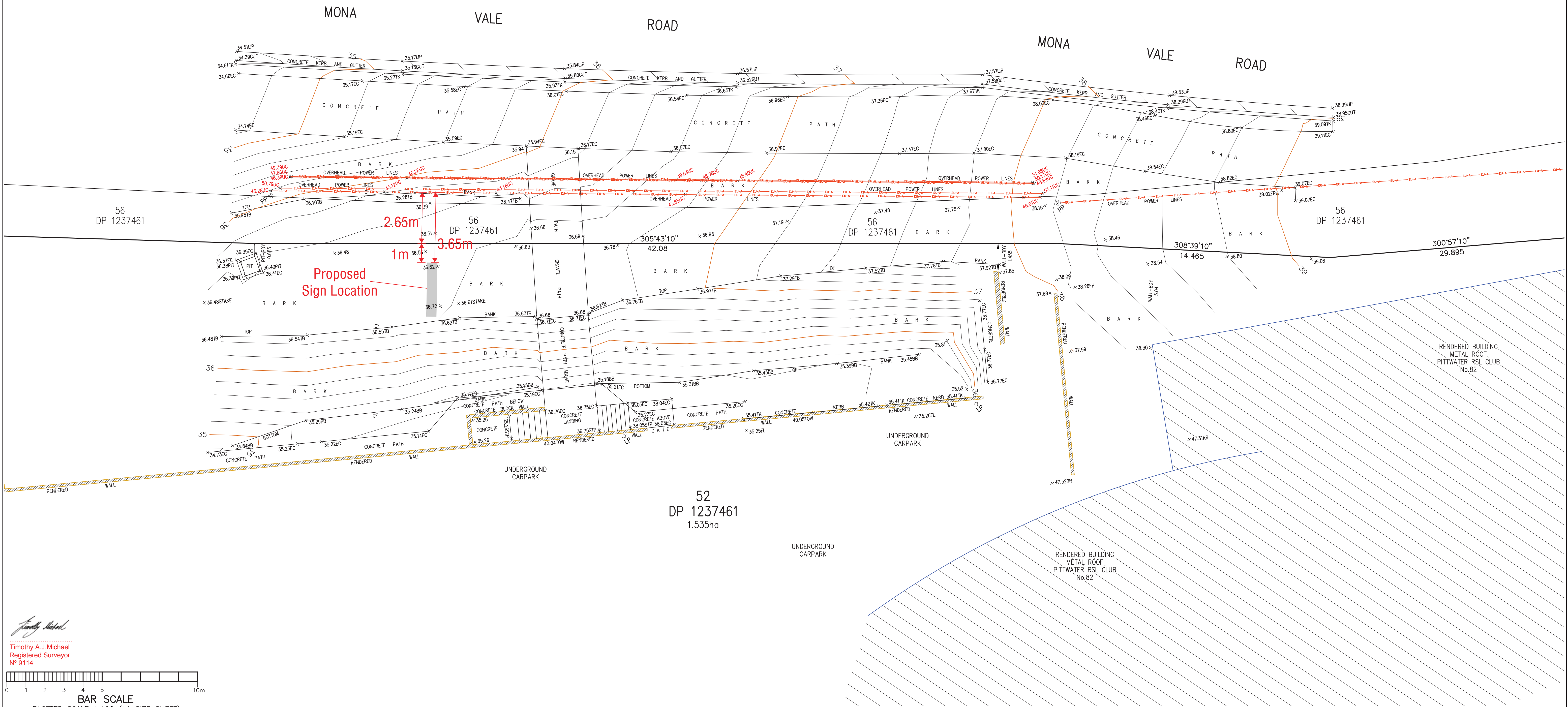
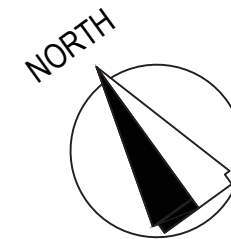
LEVELS ARE BASED ON AUSTRALIAN HEIGHT DATUM (AHD) USING PM 14308 WITH RL 41.023 (AHD).

RIDGE & GUTTER HEIGHTS HAVE BEEN OBTAINED BY INDIRECT METHOD AND ARE ACCURATE TO ± 0.05m.

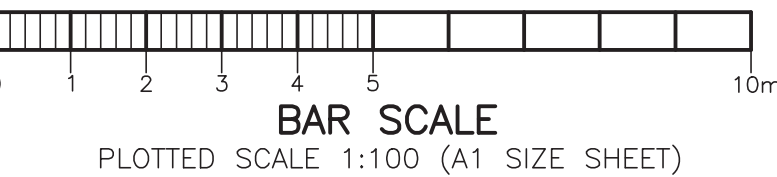
CONTOURS SHOWN DEPICT THE TOPOGRAPHY. EXCEPT AT SPOT LEVELS SHOWN THEY DO NOT REPRESENT THE EXACT LEVEL AT ANY PARTICULAR POINT. THE SPOT LEVELS ARE TRUE FOR THEIR POSITION, AND ARE INTENDED TO BE USEFUL TO REPRESENT THE GENERAL TERRAIN. CARE SHOULD BE TAKEN IF EXTRAPOLATING.

LEGEND

EC - EDGE OF CONCRETE
TB - TOP OF BANK
BB - BOTTOM OF BANK
RR - ROOF RIDGE
FL - FLOOR LEVEL
TOW - TOP OF WALL
TK - TOP OF KERB
GUT - ROAD GUTTER
LIP - LIP OF GUTTER
FH - FIRE HYDRANT
HYD - HYDRANT
SV - STOP VALVE
STP - STEPS
LP - LIGHT POLE
PP - POWER POLE
UC - UNDERSIDE OF ELECTRICITY CABLES



Timothy A.J. Michael
Registered Surveyor
N° 9114



REVISION No.	REVISION DATE:	COMMENT:
23082-2	4-10-2023	ELECTRICITY CABLES ADDED TO PLAN



Urban Surveying
PO Box. 1716, Warriewood, NSW 2102
Phone: 0452 066 506
Email: gs@urbansurveying.com.au
ABN: 53 062 097 384
www.urbansurveying.com.au



PLAN SHOWING PARTIAL DETAIL & FEATURES
OVER LOT 52 IN D.P. 1237461

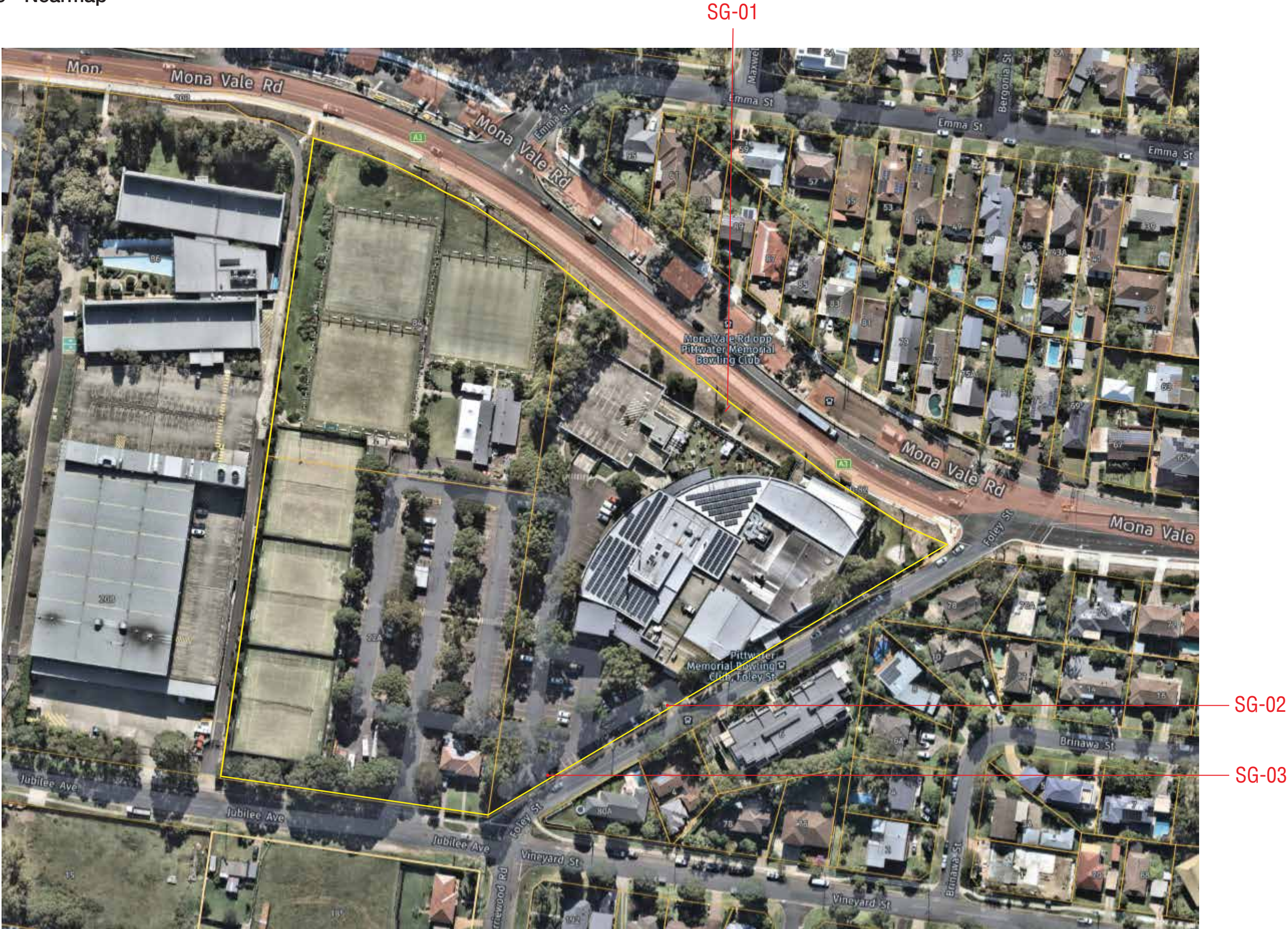
KNOWN AS Pittwater RSL Club, Monavale Road, Monavale.

L.G.A.: NORTHERN BEACHES

CLIENT FREMONT			REF No.
PROPERTY Pittwater RSL Club, Monavale Road, Monavale			23082
DATUM A.H.D.	SCALE 1:100 @ A1	DATE 23-05-2023	SHEET No. 1 of 2
SURVEYED GS	DRAWN GS	DWG No. 23082-2	REV No. 00

Site Plan - SG-01, SG-02, SG-03

Aerial Photo Source - Nearmap



SG-01_Pylon Sign - Option 1

Details

- Pylon sign with illuminated letters
- LED screen to both sides



SG-01_Pylon Sign - Option 1

Details

- Pylon sign with illuminated letters
- LED screen to both sides



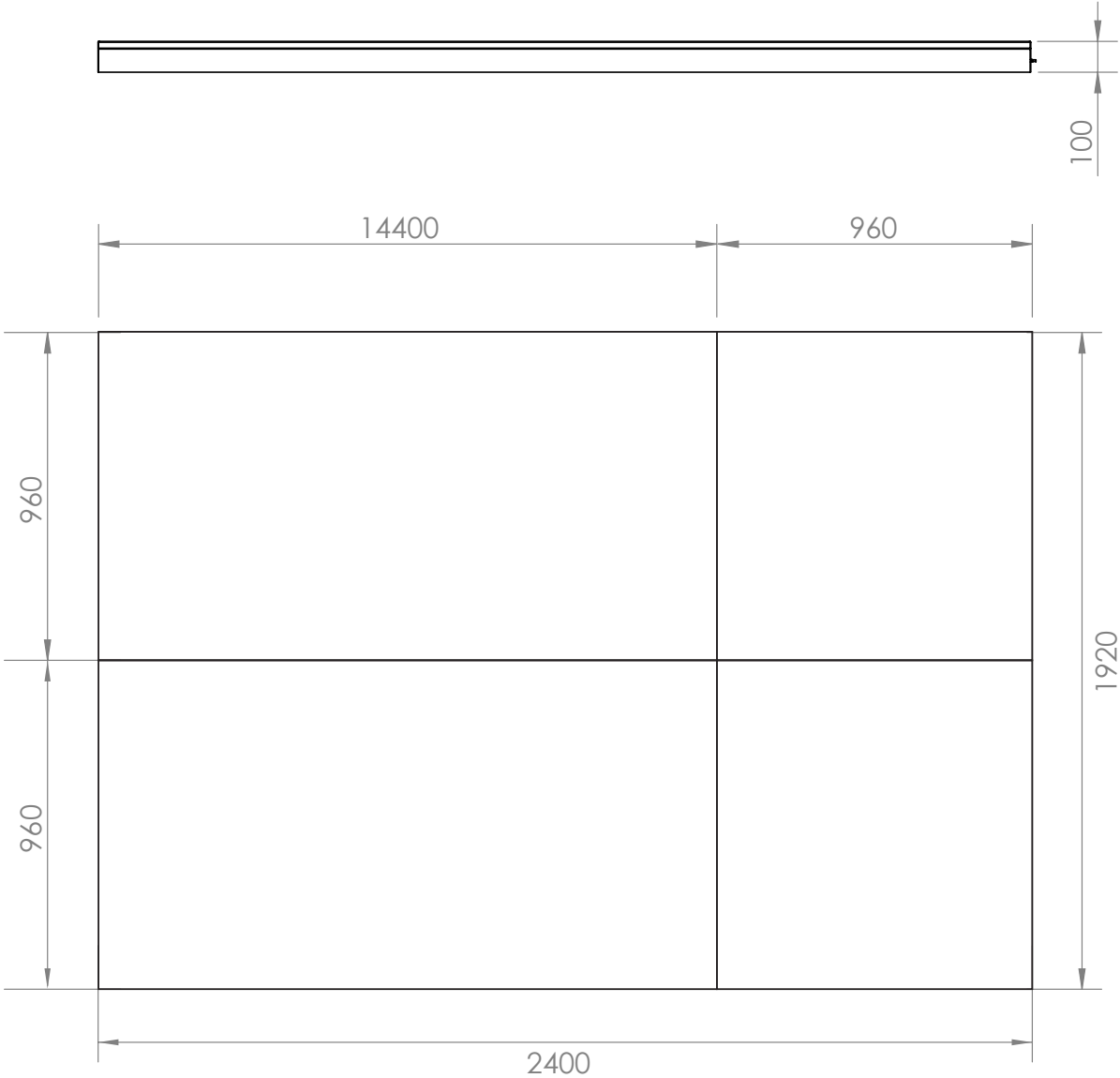
SG-01_Pylon Sign (Screen Details)

Details

- Steel fabricated sign frame
- Aluminium cladding
- LED screen by others
- Total 4.6sqm

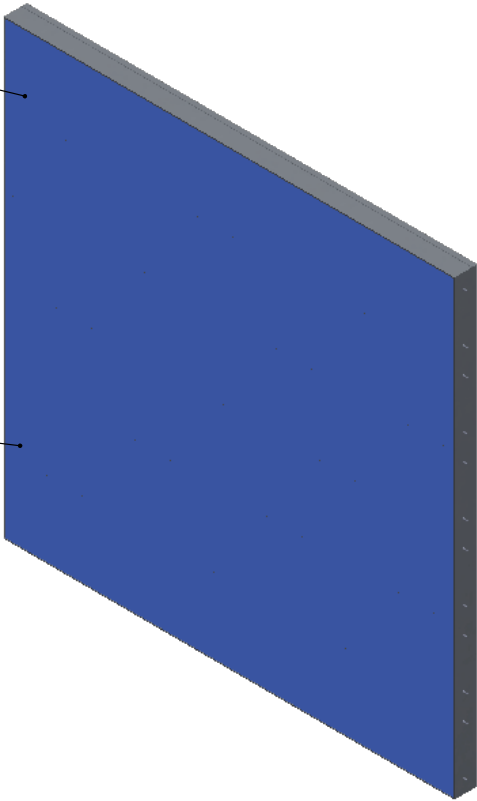
Light Details

	POWER OUTPUT 12W/m (12V)
	LUMENS 350lm/m



P3 Outdoor LED Display

Ethernet or strong Wifi for Data
If not available a 4g dongle will be required.

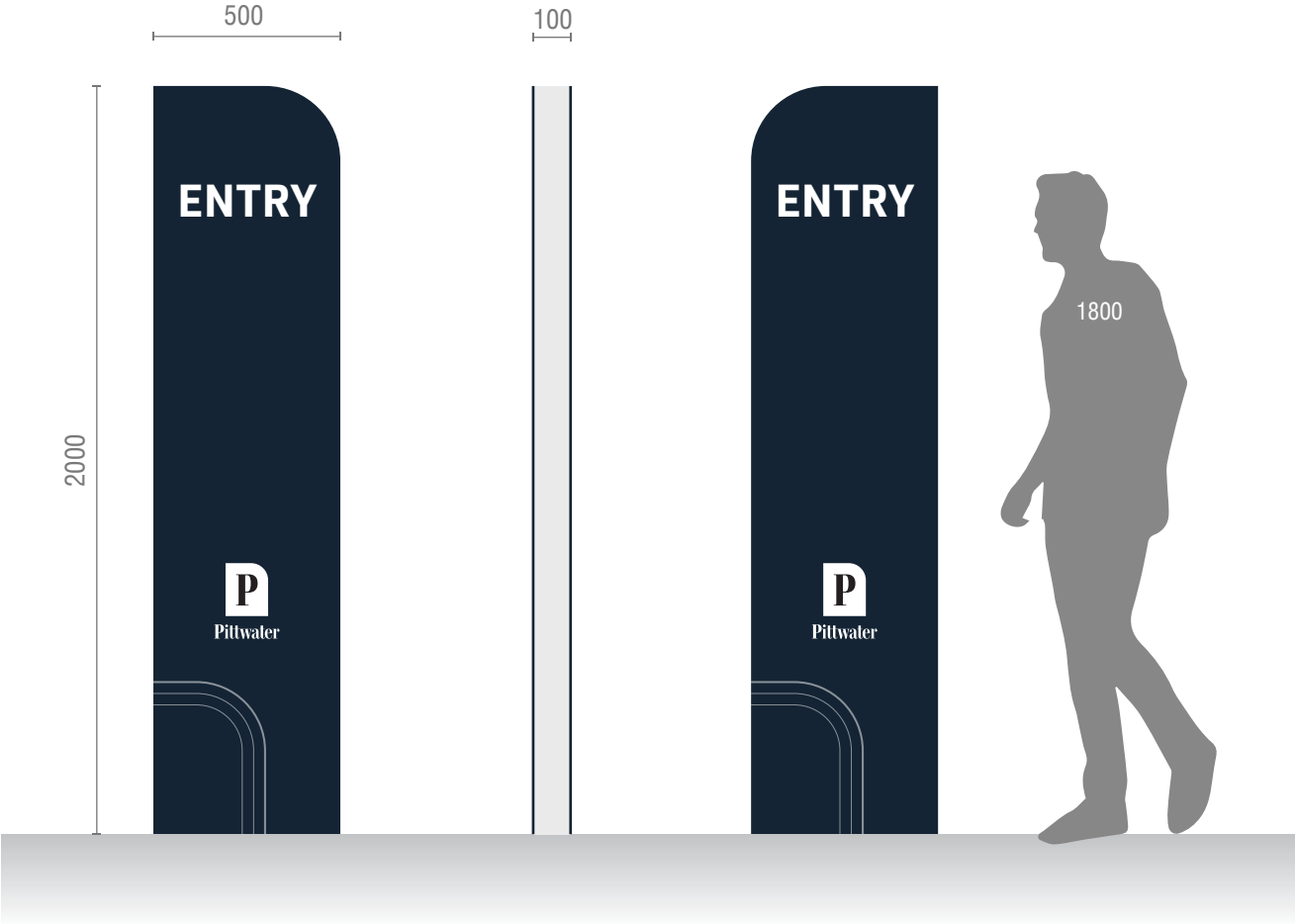


Power & Data Requirements	
GPO Qty	1
GPO Location	Rear
Ethernet QTY	1
Ethernet Location	Female termination in Machine bases / Male termination at server rack
Voltage (volts)	240
Amps (Max/Typical)	10/2.07
Watts (Max/Typical)	2410/496
HEAT BTUs	8212

SG-02_Entry Plinth

Details

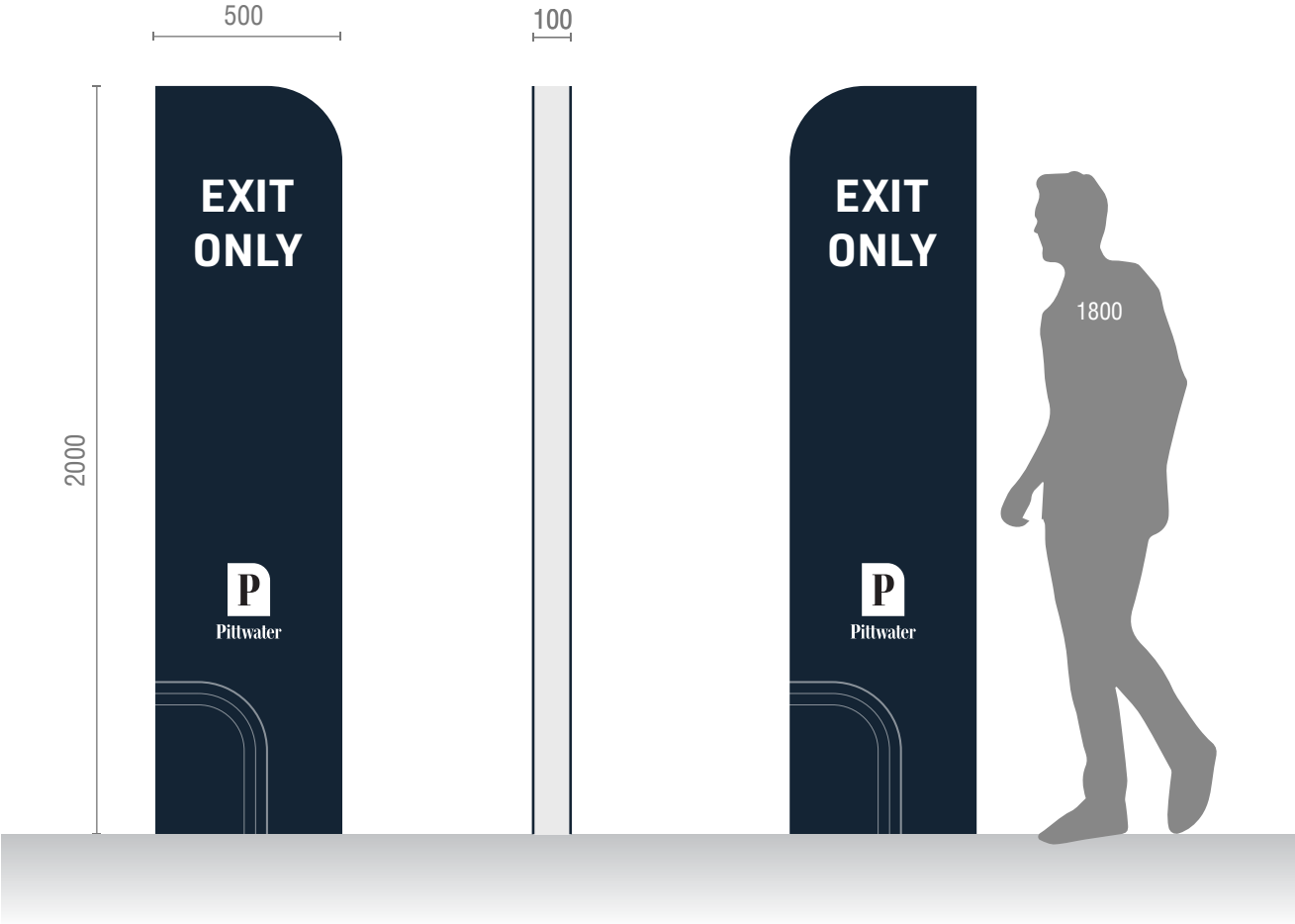
- Non-illuminated plinth sign



SG-03_Exit Plinth

Details

- Non-illuminated plinth sign





Thank you.