

LEGEND

- Existing trees to be removed
- Proposed tree plantings
- Proposed shrub plantings
- Proposed groundcover plantings
- Concrete driveway pavement
- Stencil concrete path pavement
- Non slip patio pavement
- Proposed planter bed
- Proposed garden bed
- Proposed garden bed in OSD with no floating mulch
- Proposed turf area
- Porous decorative pebble surface
- Timber garden edge
- Unit paver stepping stones

Notes:

- Refer Architects drawings for pavement, walls, fence, steps, and levels
- Refer Engineers drawings for hydraulic information



GENERAL NOTES:

- Do not scale of drawings. Follow written dimensions. If in doubt obtain written advice from the Superintendent.
- Verify all dimensions on site.
- Refer to legend for all symbol and code keys.
- Read in conjunction with the specifications
- Read in conjunction with all associated drawings

A	FOR S96	CL	12.03.18	
	ISSUE			AMENDMENT
	DRAWN			DATE

DESIGNED:	PREPARED FOR:
GD	LIBY PROPERTY WARRIEDWOOD
DRAWN:	
CL	

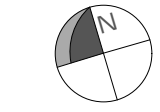
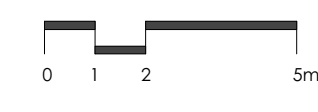
PREPARED BY:


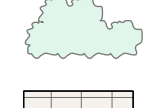

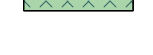


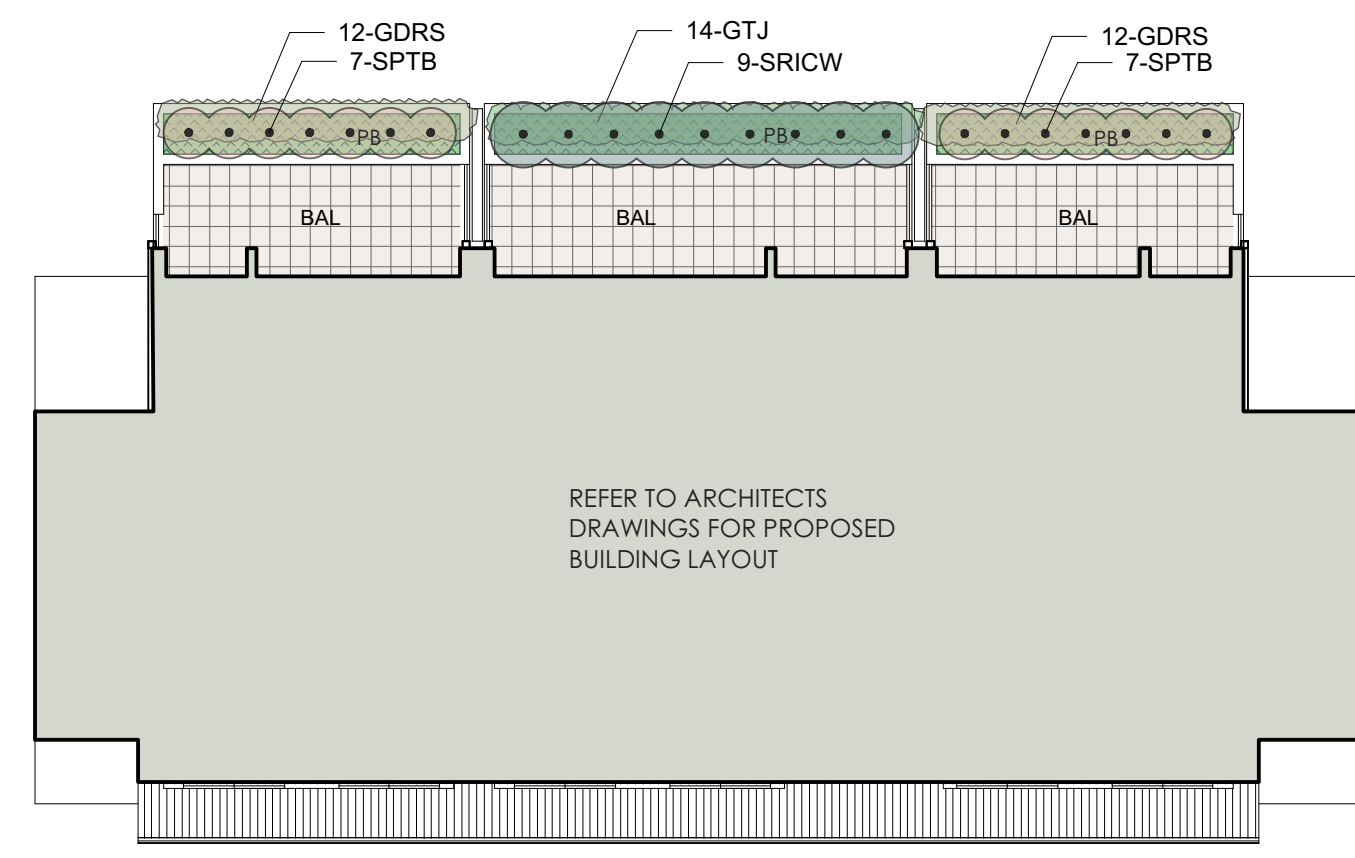
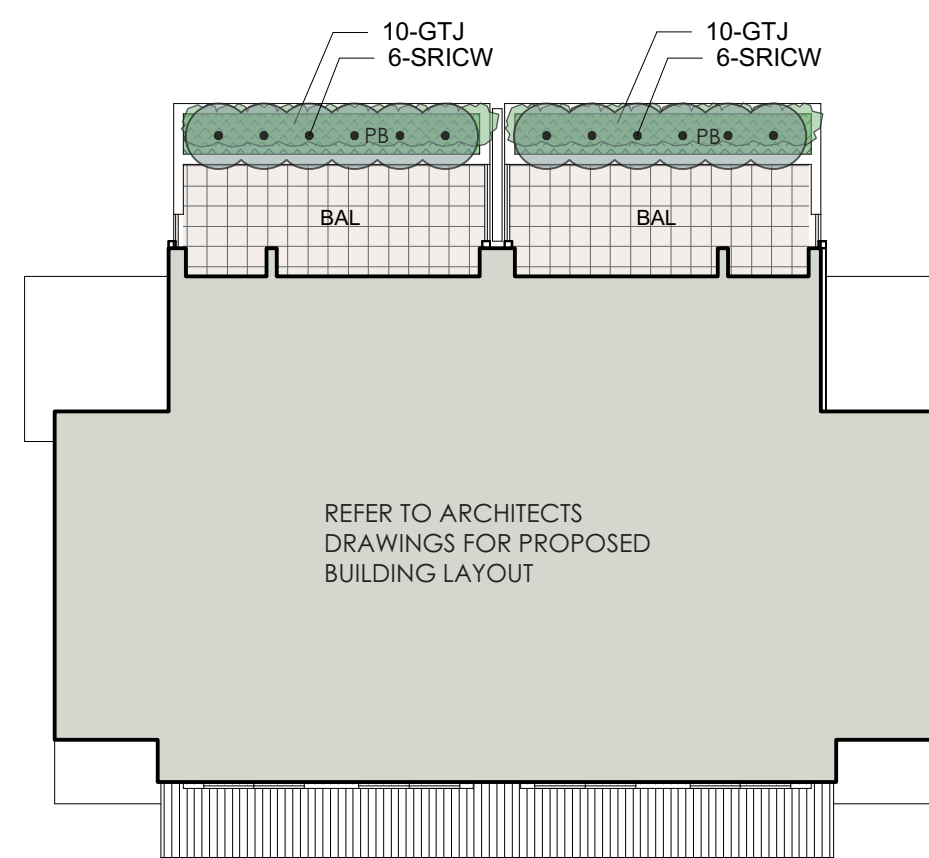
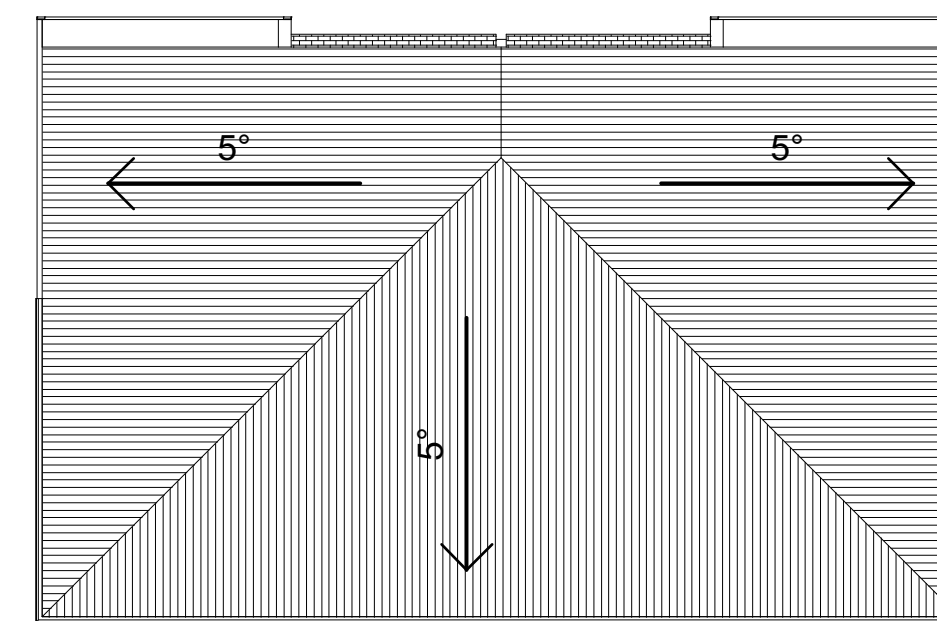
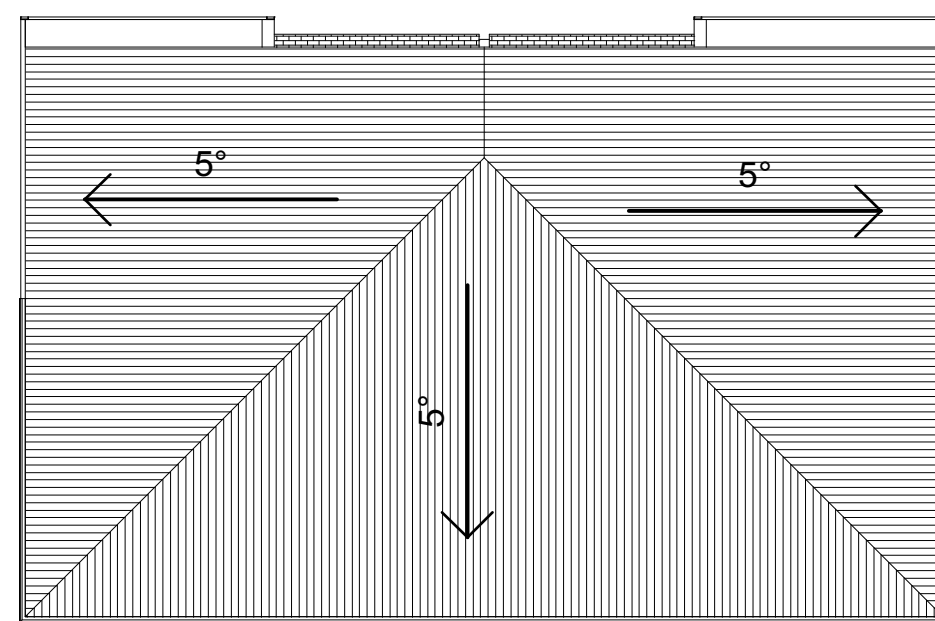
Greenland Design Pty Ltd
 ABN 73 139 152 855
 Registered Landsc. Architect: Bao Ly
 PO Box 3228 Wetherill Park NSW 2164
 T: 0403 164 198
 E: gd@greenlanddesign.com.au

PROJECT:	DRAWING TITLE:
PROPOSED MULTI HOUSING DEVELOPMENT	Landscape Plan - Ground Floor
PROJECT ADDRESS:	
NO. 5-7 MACPHERSON STREET WARRIEWOOD	

DATE:	MARCH 2018
SCALE:	1:150
FULL SIZE:	A1
DRAWING NO.:	1823.GD.01



LEGEND	
	Proposed shrub plantings
	Proposed groundcover plantings
	Non slip patio pavement
	Proposed planter bed



GENERAL NOTES:
 1. Do not scale of drawings. Follow written dimensions. If in doubt obtain written advice from the Superintendent.
 2. Verify all dimensions on site.
 3. Refer to legend for all symbol and code keys.
 4. Read in conjunction with the specifications
 5. Read in conjunction with all associated drawings

ISSUE	AMENDMENT	DRAWN	DATE
A	FOR S96	CL	12.03.18

DESIGNED: GD	PREPARED FOR: LIBY PROPERTY WARRIEDWOOD
DRAWN: CL	

PREPARED BY:

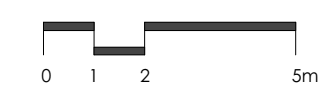



Greenland Design Pty Ltd
 ABN 73 139 152 855
 Registered Landscape Architect: Bao Ly
 PO Box 3228 Wetherill Park NSW 2164
 T: 0403 164 198
 E: gd@greenlanddesign.com.au

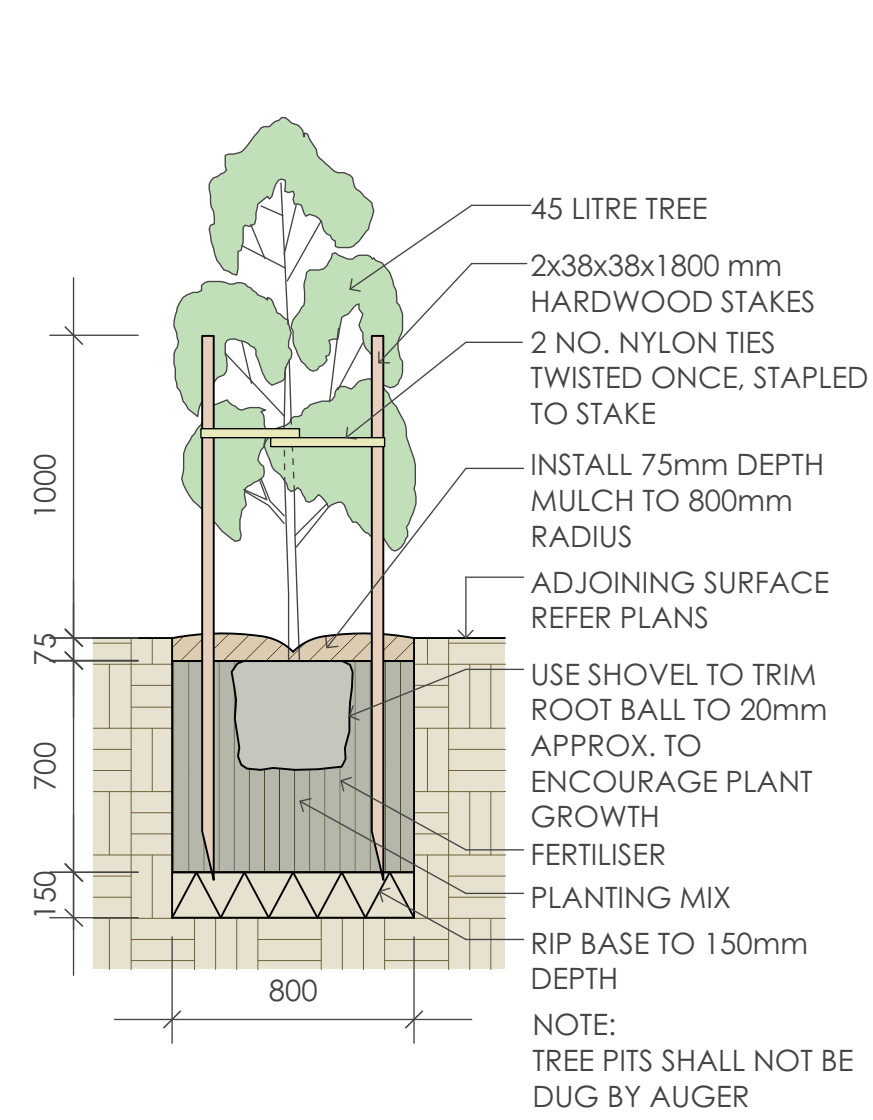
PROJECT: **PROPOSED MULTI HOUSING DEVELOPMENT**

PROJECT ADDRESS:
 NO. 5-7 MACPHERSON STREET WARRIEWOOD

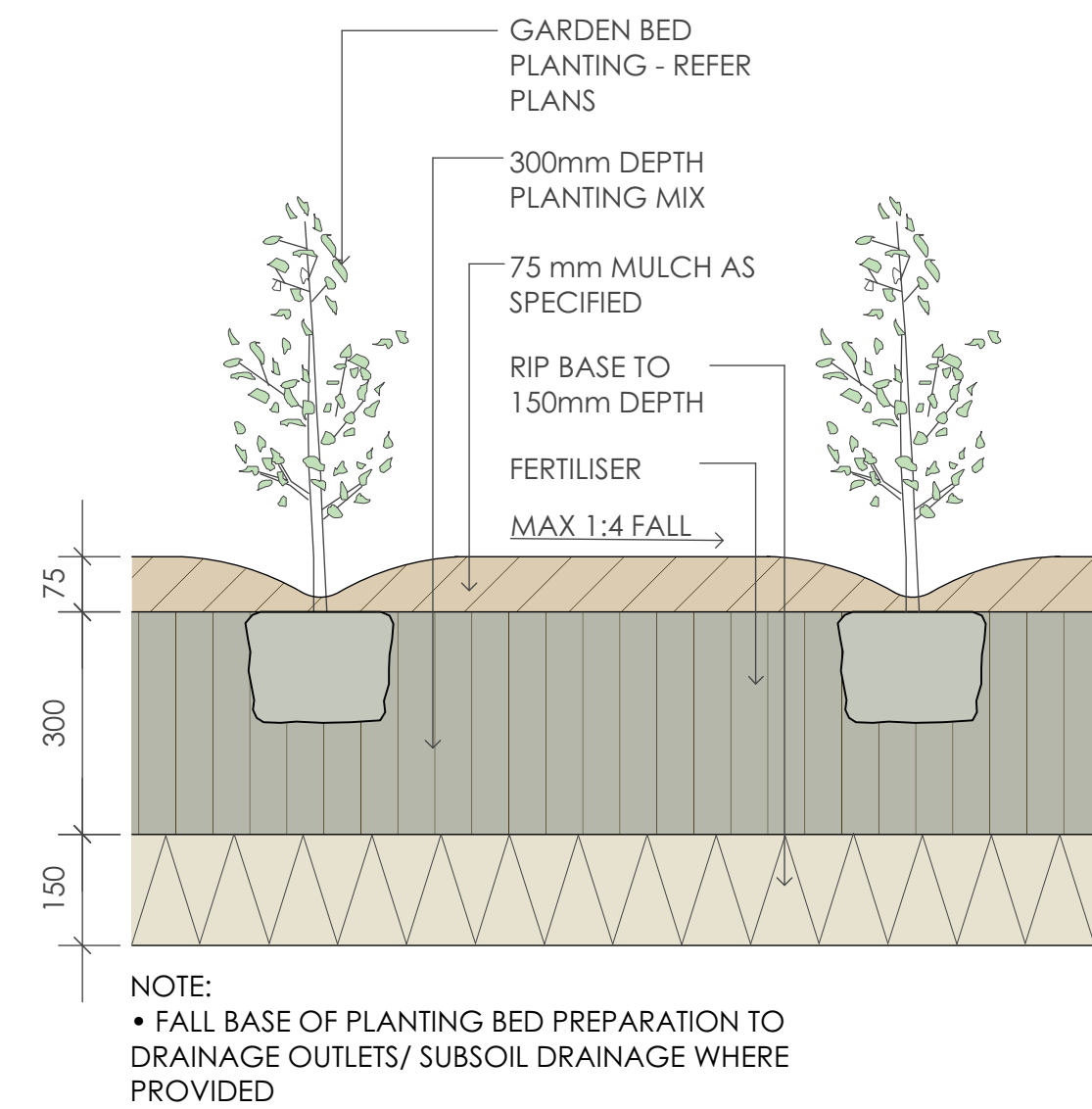
DRAWING TITLE: **Landscape Plan - Level 2**

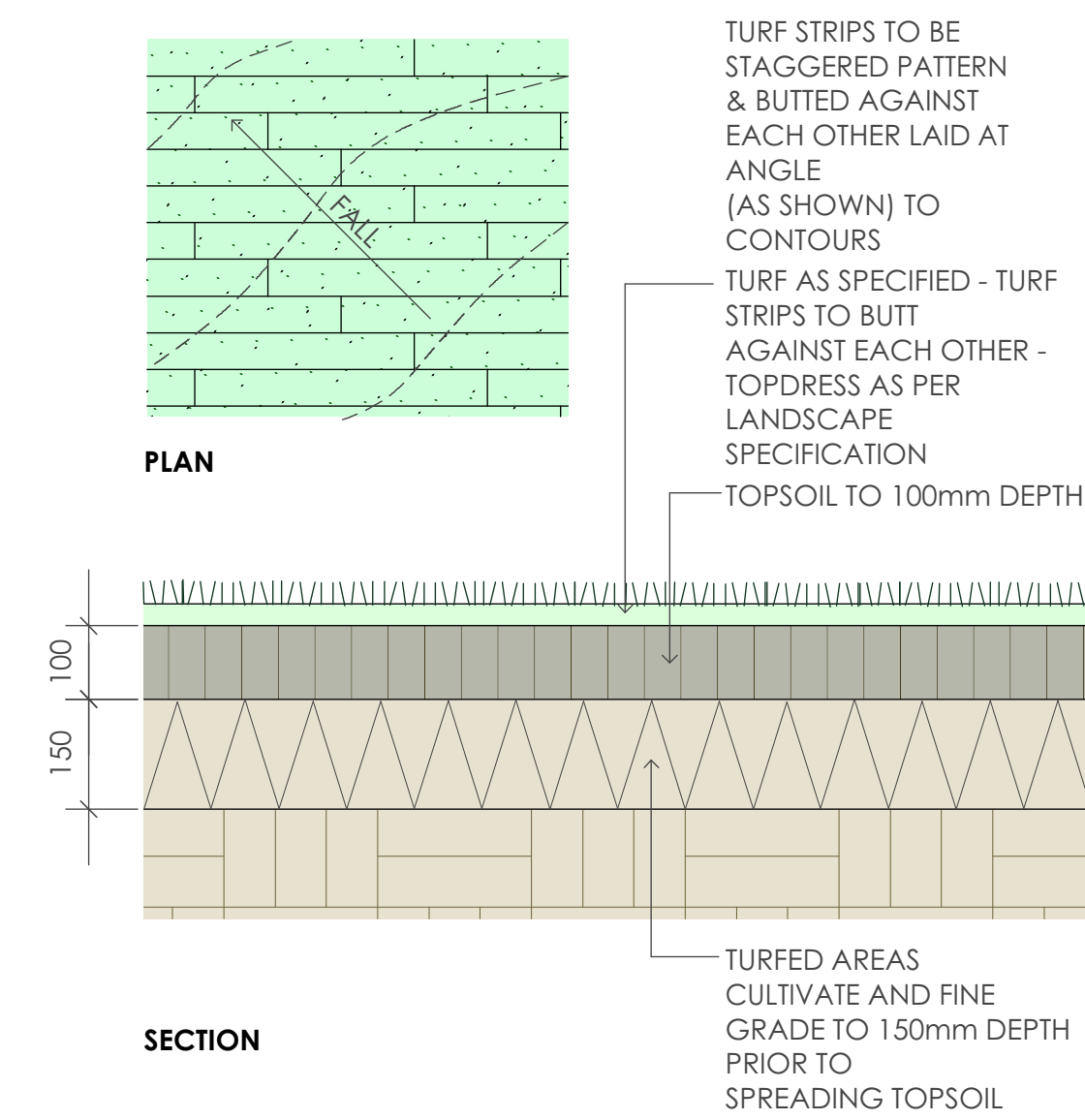
DATE: MARCH 2018
SCALE: 1:150
FULL SIZE: A1
ISSUE: A
DRAWING NO: 1823.GD.02



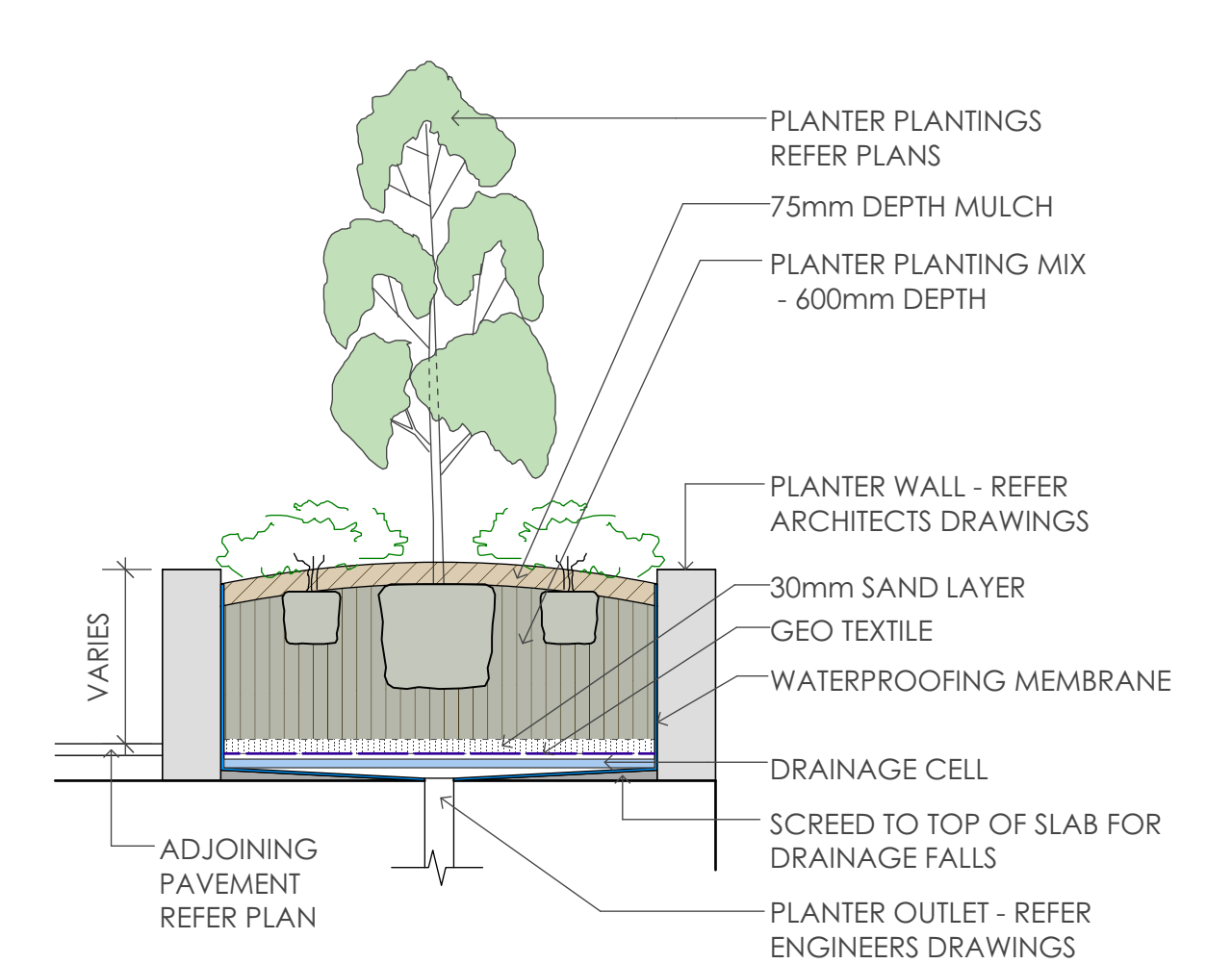
1 45 Litre Tree Planting
scale 1:25



2 Planting Bed Detail
scale 1:10



3 Turfing
scale as shown



4 Planter Bed On Slab
scale 1:25

ID	Qty	Common Name	Botanical Name	Size	Mature Height	Mature Spread	Native (N)
Trees							
TBI	4	Coastal Banksia	Banksia integrifolia	45Litre	---	---	N
TBM	13	Grey Myrtle	Backhousia myrtifolia	45Litre	5 - 10m	3.5 - 6m	N
TEHA	4	Scribbly Gum	Eucalyptus haemastoma	45Litre	10 - 15m	6 - 10m	N
TMG	4	Little Gem Southern Magnolia	Magnolia grandiflora 'Little Gem'	45Litre	4 - 6m	2.0 - 3.5m	
Shrubs							
SBE	14	Heath-leaved Banksia	Banksia ericifolia	200mm	4 - 6m	4 - 6m	N
SCCE	39	Scarlet Bottlebrush	Callistemon citrinus 'Endavour'	200mm	3 - 5m	2.0 - 3.5m	N
SCGB	55	Bottle Brush	Callistemon "Great Balls of Fire"	200mm	1.0 - 1.5m	1.0 - 1.5m	N
SCSP	12	Pure Silk Camellia	Camellia sasanqua 'Pure Silk'	200mm	3 - 5m	1.5 - 2m	
SGAF	32	Florida Gardenia	Gardenia augusta 'Florida'	200mm	0.8 - 1.0m	1.0 - 1.5m	
SGL	22	White Spider Flower	Grevillea linearifolia	200mm	0.9 - 1.5m	0.9 - 1.2m	N
SMP	23	Orange Jessamine	Murraya paniculata	200mm	2.0 - 3.0m	2.0 - 3.0m	
SPMM	50	Miss Muffet	Pittosporum tobira 'Miss Muffet'	200mm	0.8 - 1.0m	1.2 - 1.5m	
SPTB	67	Bronze Warrior Flax	Phormium tenax 'Bronze Warrior'	200mm	1.4 - 1.6m	1.4 - 1.6m	
SPX	45	Philodendron	Philodendron xanadu	200mm	0.8 - 1.0m	0.8 - 1.0m	
SRICW	77	Cosmic White Rhipirolepis	Rhipirolepis indica 'Cosmic White'	200mm	1.5 - 2.0m	1.2 - 1.5m	
SSL	49	Small-leaved Lilly Pilly	Syzygium luehmannii 'Lulu'	200mm	4 - 6m	6 - 10m	N
SSTJ	11	Birds Of Paradise	Strelitzia juncea	200mm	0.9 - 1.5m	0.9 - 1.2m	
SVO	25	Dense Form Viburnum	Viburnum odoratissimum 'Dense Form'	200mm	2 - 3m	1.5 - 2.0m	
SWJG	28	Jervis Gem	Westringia fruticosa 'Jervis Gem'	200mm	0.8 - 1.2m	0.8 - 1.2m	N
Ground Covers							
GHV	54	Meema	Hardenbergia violacea 'Meema'	150mm	0.4 - 0.6m	1.5 - 2.0m	N
GLT	250	Spiny-headed mat rush	Lomandra longifolia 'Tanika'	150mm	0.45 - 0.6m	0.6 - 0.9m	N
GWM	37	Mundi	Westringia fruticosa 'Mundi'	150mm	0.45 - 0.6m	0.9 - 1.2m	N
GDTT	69	Flax Lily	Dianella tasmanica 'Tasred'	150mm	0.4 - 0.5m	0.4 - 0.5m	N
GLMIS	297	Isabella Liriope	Liriope muscari 'Isabella'	150mm	0.3 - 0.4m	0.4 - 0.5m	
GTAFM	102	Flat Mat Trachelospermum	Trachelospermum asiaticum 'Flat Mat'	150mm	0.3 - 0.4m	3.0 - 4.0m	
GFN	194	knobby club-rush	Ficinia nodosa	viro tube	0.75 - 0.9m	0.0 - 0.3m	N
GDRS	24	Dichondra 'Silver Falls'	Dichondra repens 'Silver Falls'	150mm	0.2 - 0.3m	0.6 - 1.5m	
GTJ	34	Star Jasmine	Trachelospermum jasminoides	150mm	0.3 - 0.6m	1 - 4m	
GDC	194	Blue Flax-lily	Dianella caerulea	viro tube	0.6 - 0.75m	0.6 - 0.9m	N
GIC	194	Blady Grass	Imperata cylindrica	viro tube	0.9 - 1.5m	0.3 - 0.6m	N
GLK	194	Spiny-headed Mat-Rush	Lomandra longifolia	viro tube	0.75 - 0.9m	0.9 - 1.2m	N
GTA	194	Kangaroo Grass	Themeda australis	viro tube	0.9 - 1.5m	0.3 - 0.6m	N
GCX	194	Tall Sedge	Carex appressa	viro tube	0.9 - 1.5m	0.3 - 0.6m	N
GIN	194	Knobby Club-rush	Isolopis nodosa	viro tube	0.6 - 0.75m	0.3 - 0.6m	N
GJU	194	Common Rush	Juncus usitatus	viro tube	0.9 - 1.5m	0.6 - 0.9m	N

SPECIFICATION NOTES

PLANTING MATERIALS

Planting Mix:

Planting mix for tree pit backfill shall be "Organic Garden Mix" consisting of
 50% Black Soil
 20% Coarse Sand
 30% Organic Material

as available from Australian Native Landscapes, Phone: [02] 9450 1444, or approved equivalent. Samples shall be provided to the Superintendent prior to ordering or delivery to site. Any material delivered to site, that is rejected by the Superintendent, shall be removed by the contractor at his own expense. Minimum depths of mix to all planting bed areas is as specified on details.

Planter Mix:

Planter mix shall be Peat and Planter Mix as supplied by Australian Native Landscape Pty Ltd (ph [02] 9450 1444 or approved equivalent).

Planter Drainage Cell:

Planter drainage cell shall be VersiCell as supplied by Elmich Australia Pty Ltd (ph [02] 9448 2073 or approved equivalent).

Mulch:

Mulch to garden bed:

Mulch shall mean hardwood mulch (25mm grade), free from material derived from Privet, Willow, Poplar, Coral trees, or other noxious weeds. Any mulch exceeding the 25mm grade shall be rejected / removed from the site. Graded hardwood mulch to be supplied by Australian Native Landscapes Pty Ltd Phone [02] 9450 1444, or approved equivalent.

Mulch to planter beds:

Mulch to planter beds shall be Pine bark mini nuggets mulch (25mm grade), free from fines and as available from Australian Native Landscapes Pty Ltd Phone [02] 9450 1444, or approved equivalent.

Spread mulch so that after settling, it is:

- smooth and evenly graded between design surface levels;
- flush with adjacent finished levels;
- of the required depths (75mm); and
- sloped towards the base of plant stems in plantation beds, but not in contact with the stem (not closer than 50mm in the case of gravel mulches).

Place after the preparation of the planting bed, planting and all other work.

Plant Material:

All plant material must be true to the species. No substitutes will be allowed. All plants shall be free of fungus and insect damage. All plants shall be healthy, well shaped, not soft or force grown and not root bound.

Plants are available from **Andreasens Green** wholesale nursery, contact Darren (02) 8777 4713, email darren@andreasensgreen.com.au or approved equivalent.

Turfed areas:

All new turf areas are to be selected weed free Soft Leaf Buffalo. Turf shall be laid neatly butted with staggered joints, flush with adjacent surfaces and have even running falls to all drainage points.

All new turf area shall have a minimum 150mm depth of weed free top soil, placed and levelled prior to turfing.

PREPARATION AND HARDWORKS

Excavating for Spot Planting

To planting areas, excavate a hole for each plant large enough to provide not less than twice the depth and twice the diameter than the root ball of species to be planted.

Staking

Use durable hardwood, straight, free from knots or twists, pointed at one end. Drive stakes into the ground a minimum one third of their length, avoiding damage to the root system.

- 45 Litre trees in 2 x 38x38x1800mm Hardwood Stake with double Nylon tie TIES: Provide a 50mm wide Nylon webbing tie per stake, fixed securely to the stakes, one tie at half the height of the main stem and the other as necessary to stabilise the plant.

Decorative Pebble

MATERIAL: Decorative pebble shall be Western White pebble, gravel to be of uniform size or graded material in the size 30 - 40mm grade to nominal 75mm thickness as available from Australian Native Landscapes. Ph: [02] 9450 1444.

Timber Edge

MATERIAL: Timber edging shall consist of:

Edging: 100 x 50mm hardwood

Pegs: 50 x 50 x 400mm hardwood.

Fastenings: to be 75x3.75mm diam. galvanised nails

INSTALLATION: Setout alignment of timber edges on site for approval of Superintendent. Excavate to approved alignment and place edge band within trench to confirm peg locations. Install pegs and affix timber edge in accordance with details. All timber edging to finish flush with adjoining turf.

MAINTENANCE / PLANT ESTABLISHMENT

Maintenance shall apply to all hard and soft landscape materials installed prior to the "handover" and acceptance by Principles Representative and the Site Superintendent. The maintenance period shall convenience of the granting of practical completion and shall extend for 26 weeks.

Maintenance shall consist of the following works:

- Follow a daily watering programme to be approved by Superintendent. Water all plants individually, twice per week or when necessary to ensure constant plant growth. Water all turf and native grassed areas, twice per week.
- Apply appropriate weed control sprays and hand weed as required to maintain planting areas, native grassed bed areas, turf areas, paved areas, and tree pits in turf free of weed or rogue grass growth.
- Regularly tidy and top up mulch and trim edges to prevent spill over onto paved / grassed areas.
- Spray to control pests and diseases.
- Replace plants, which fail with plants of a similar size and quality as originally specified to approval of Superintendent. Costs of replacement shall be the responsibility of the Contractor. Replacement planting will be undertaken within 2 weeks of identification of dead material or instruction be the Superintendent.
- Report any incidence of plants stolen or destroyed by vandalism.
- Adjust stakes and ties to plants as necessary. Ensure that strangulation of plants does not occur.
- Prune and shape plants as directed or where necessary.
- Make good any defects or faults arising out of defective workmanship or materials.
- Fertilise lawn areas to maintain healthy growth.
- Make good any erosion or soil subsidence, which may occur including soft areas in pathways.
- Mow lawn to maintain neat healthy growth.
- A final inspection shall be made by the Superintendent before handover. Any items requiring rectification shall be repaired before the works are finally approved, and retention moneys released.

NOTE:

- All finished levels are to be verified by Contractor on site.
- All landscape works be in strict accordance with Council's landscape code and guidelines
- This plan to be used in conjunction with all other submitted architectural, hydraulics and engineering drawing where applicable.



GENERAL NOTES: 1. Do not scale of drawings. Follow written dimensions. If in doubt obtain written advice from the Superintendent. 2. Verify all dimensions on site. 3. Refer to legend for all symbol and code keys. 4. Read in conjunction with the specifications 5. Read in conjunction with all associated drawings	A	FOR S96	CL	12.03.18	DESIGNED: GD	PREPARED FOR: LIBY PROPERTY WARRIEDWOOD	PREPARED BY: GREENLAND DESIGN Landscape Architects	PROJECT: PROPOSED MULTI HOUSING DEVELOPMENT	DRAWING TITLE: Landscape Details & Specification	DATE: MARCH 2018
					ISSUE	AMENDMENT	DRAWN	DATE	SCALE: varies FULL SIZE: A1	ISSUE: A