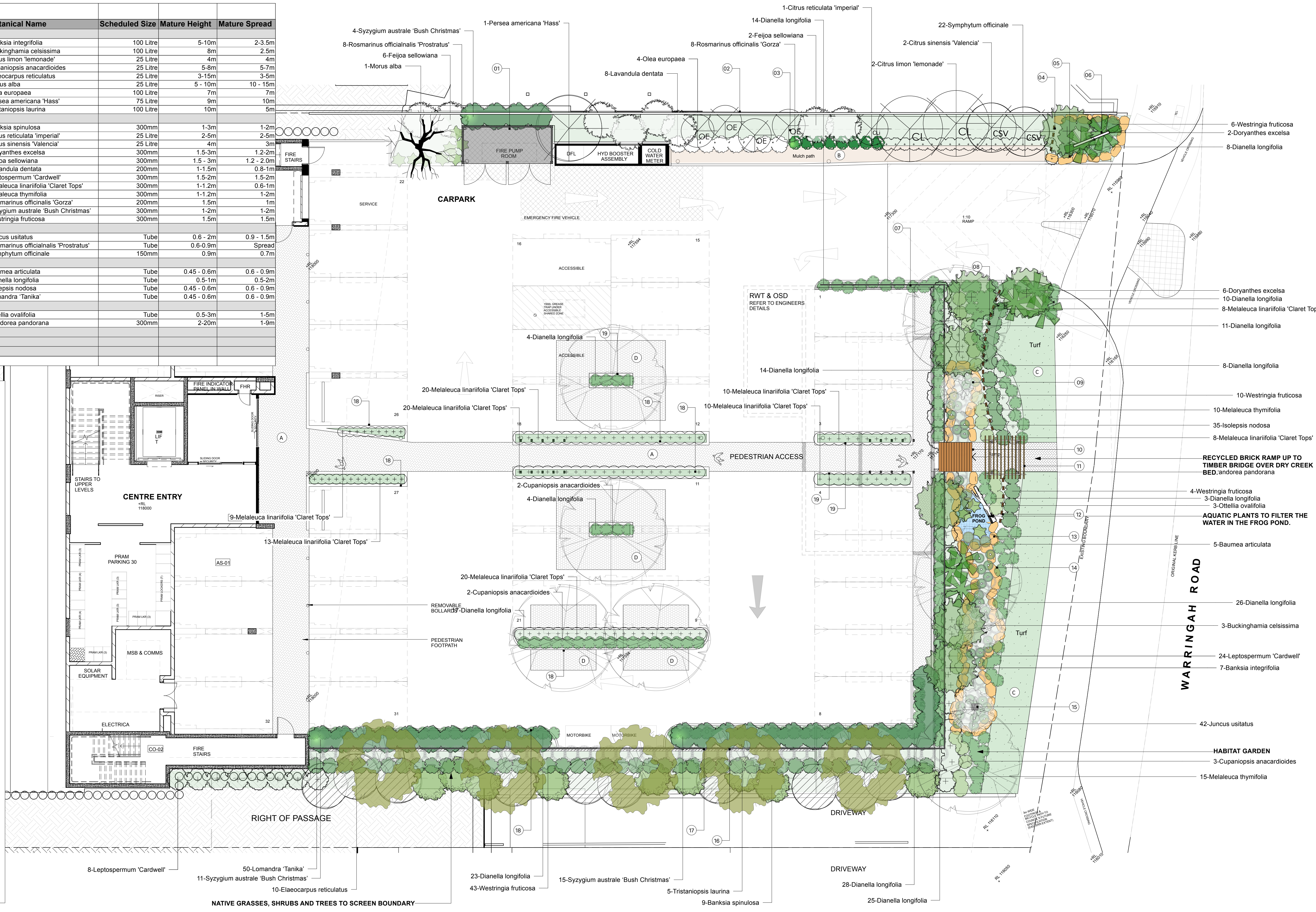


Image	ID	Qty	Common Name	Botanical Name	Scheduled Size	Mature Height	Mature Spread
<b>Trees</b>							
	BI	7	Coastal Banksia	Banksia integrifolia	100 Litre	5-10m	2-3.5m
	BC	3	Ivory Curl	Buckinghamia celsissima	100 Litre	8m	2.5m
	CLL	2	Lemonade Lemon	Citrus limon 'lemonade'	25 Litre	4m	4m
	CA	7	Tuckeroo	Cupaniopsis anacardioides	25 Litre	5-8m	5-7m
	ER	10	Blue Berry Ash	Elaeocarpus reticulatus	25 Litre	3-15m	3-5m
	MLBRY	1	White Mulberry	Morus alba	25 Litre	5 - 10m	10 - 15m
	OLE	4	European Olive	Olea europaea	100 Litre	7m	7m
	PER	1	Avocado	Persea americana 'Hass'	75 Litre	9m	10m
	TI	5	Water Gum	Tristaniopsis laurina	100 Litre	10m	5m
<b>Shrubs</b>							
	BSP	9	Hairpin Banksia	Banksia spinulosa	300mm	1-3m	1-2m
	CRI	1	Dwarf Imperial Mandarin	Citrus reticulata 'imperial'	25 Litre	2-5m	2-5m
	CSV	2	Valencia Orange	Citrus sinensis 'Valencia'	25 Litre	4m	3m
	DORYE	8	Gymea Lily, Giant Lily	Doryanthes excelsa	300mm	1.5-3m	1.2-2m
	FEIJ	8	Pineapple Guava	Feijoa sellowiana	300mm	1.5 - 3m	1.2 - 2.0m
	LAV	8	French Lavender	Lavandula dentata	200mm	1-1.5m	0.8-1m
	Lc	32	Tea Tree	Leptospermum 'Cardwell'	300mm	1.5-2m	1.5-2m
	MC	118	Honey Myrtle	Melaleuca linariifolia 'Claret Tops'	300mm	1-1.2m	0.6-1m
	Mt	25	Thyme Honey-myrtle	Melaleuca thymifolia	300mm	1-1.2m	1-2m
	RG	8	Rosemary Gorza	Rosmarinus officinalis 'Gorza'	200mm	1.5m	1m
	SZXM	30	Bush Christmas	Syzygium australe 'Bush Christmas'	300mm	1-2m	1-2m
	WSTF	63	Coastal Rosemary	Westringia fruticosa	300mm	1.5m	1.5m
<b>Ground Covers</b>							
	Ju	42	Common Rush	Juncus usitatus	Tube	0.6 - 2m	0.9 - 1.5m
	ROP	8	Creeping Rosemary	Rosmarinus officinalis 'Prostratus'	Tube	0.6-0.9m	Spread
	So	22	Comfrey	Symphytum officinale	150mm	0.9m	0.7m
<b>Grasses</b>							
	Ba	5	Jointed Rush	Baumea articulata	Tube	0.45 - 0.6m	0.6 - 0.9m
	DL	195	Blue flax lily	Dianella longifolia	Tube	0.5-1m	0.5-2m
	Fn	35	Knobby Club Rush	Isolepis nodosa	Tube	0.45 - 0.6m	0.6 - 0.9m
	LLT	50	Spiny-headed mat rush	Lomandra 'Tanika'	Tube	0.45 - 0.6m	0.6 - 0.9m
<b>Climbers</b>							
	Oo	3	Swamp Lilly	Ottelia ovalifolia	Tube	0.5-3m	1-5m
	PP	4	Wong Wonga Vine	Pandorea pandorana	300mm	2-20m	1-9m
<b>Aquatic Plants</b>							
<b>Perennials</b>							
<b>Ferns</b>							
<b>Total</b>	<b>716</b>						

- KEY:**
- Elements**
01. Enclosure to fire pump room - black pool fencing with hardwood posts and skillion roof with corrugated sheet. Roof to fall back towards fence line (by others)
  02. Lap and cap timber fence to western boundary (by others)
  03. Fruit trees planted along western boundary
  04. Vertical sleeper screen. 200x75mm mixed species sawn hardwood H4 in ground. Individual posts installed vertically in concrete strip footing and cut to varying heights between 900-1800H above ground level (refer to elevation on plan)
  05. Sandstone boulder retaining wall beneath signage 400H (use sandstone from site where possible)
  06. Orchard signage (by others)
  07. Black pool fence with hardwood posts to front boundary (1.2m high)
  08. Vertical sleeper screen. 200x75mm mixed species sawn hardwood H4 in ground. Individual posts installed vertically in concrete strip footing and cut to varying heights between 900-1800H above ground level (refer to elevation on plan)
  09. Rain garden including sandstone boulder edge, sandstone spalls and drainage (use sandstone from site where possible)
  10. Timber bridge over rain garden creek bed (Ironbark wharf timber 136x32)
  11. Timber trellis with laser cut corten steel sign attached to the front. Vines trained to timber trellis
  12. Vertical sleeper screen. 200x75mm mixed species sawn hardwood H4 in ground. Individual posts installed vertically in concrete strip footing and cut to varying heights between 900-1800H above ground level (refer to elevation on plan)
  13. Rain garden including sandstone boulder edge, Class 1 Australian hardwood log, mesh screen, pond liner and pebbles to base
  14. Rain garden including sandstone boulder edge, sandstone spalls and drainage (use sandstone from site where possible)
  15. Overflow drainage pit at the end of the rain garden
  16. Black pool fence with hardwood posts to Eastern boundary. Fixed to top of retaining wall (1.2m high)
  17. Retaining wall (by others)
  18. 100mm concrete kerb (by others)
  19. Concrete kerb 300mm above OSD (by others)
- Surfacing**
- A. Recycled brick paving (herringbone pattern)  
 B. Mulch path  
 C. Natural turf to nature strip  
 D. Provide 700mm deep tree pit with adequate drainage and permeable paving (by others)







VERTICAL SLEEPER SCREEN ELEVATION  
1:25



Recycled brick Paving



Indicative image of corten steel signage to timber trellis

# ORCHARD EARLY LEARNING CENTRE, FORESTVILLE

Elevation Drawing  
31st August 2021





**KEY:**

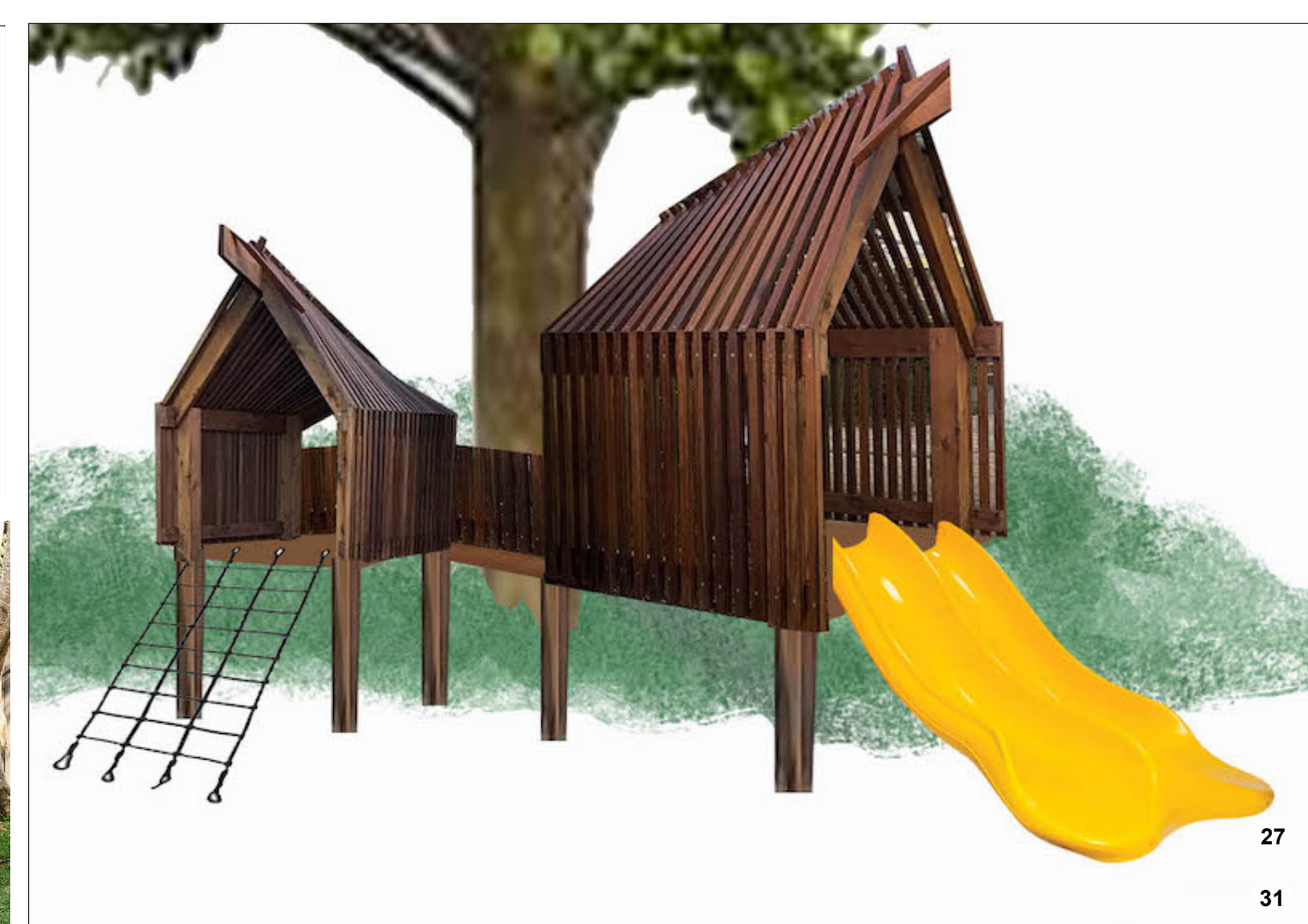
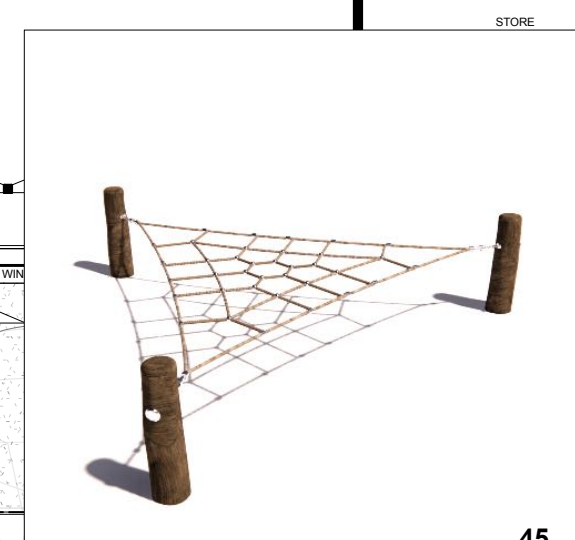
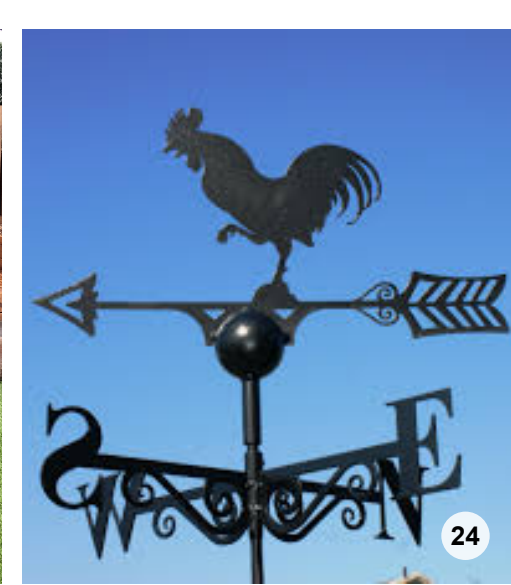
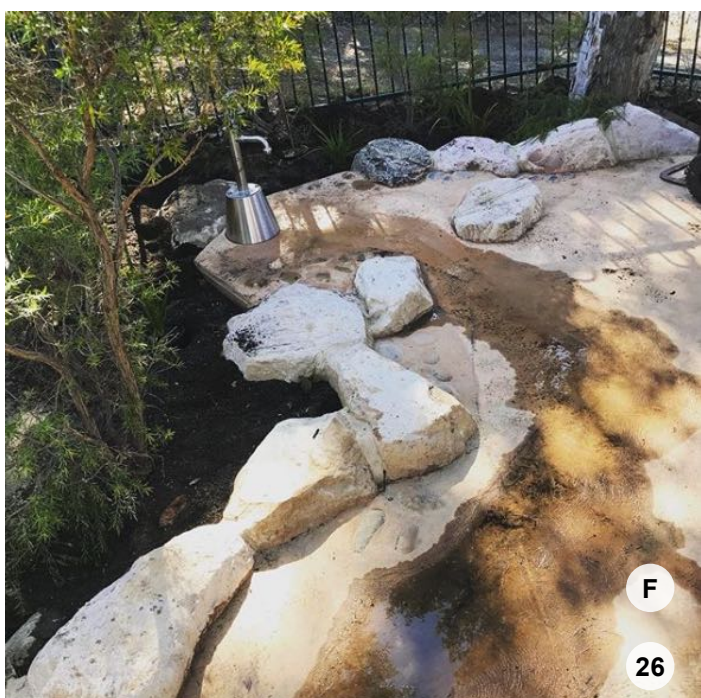
**Elements**

- 01. Cubby house
- 02. Black pool fence and gate with hardwood posts (1.2m High)
- 03. Screen planting
- 04. Black pool fence and gate with hardwood posts to storage area (1.2m High)
- 05. Mirror fixed to wall
- 06. Fort with net structure and slide
- 07. Retractable awning (by others)
- 08. Timber bench seat
- 09. Citrus grove (STEM teaching aid)
- 10. Composting worm farm (STEM teaching aid)
- 11. Pollination Station - Native Stingless Bees (STEM teaching aid)
- 12. Fencing to 2-3 year old yard is a combination of Black pool fence with hardwood posts and rustic timber fencing (1m High)
- 13. Orchard
- 14. Bird bath (STEM teaching aid)
- 15. Shade sails with timber shade post
- 16. Class 1 Australian hardwood log seats
- 17. Rustic timber trellis to SLA
- 18. Chicken coop with egg collector (STEM teaching aid)
- 19. Chicken run
- 20. Wicking beds (STEM teaching aid)
- 21. Timber trellis with climbers
- 22. Timber bench seat
- 23. Timber bench
- 24. Weathervane (STEM teaching aid)
- 25. Rustic timber fence to Petting Zoo (1m High)
- 26. Rustic timber fence to the Sustainable Learning Area (1m High)
- 27. Tree house cubby with slide
- 28. Pulley bucket
- 29. Bird nesting box (STEM teaching aid)
- 30. Bubble viewing panel
- 31. Tree house cubby with climbing net
- 32. Sandstone stepping stone path
- 33. Hand water pump
- 34. Sandstone boulder edge (use sandstone from site where possible)
- 35. Class 1 hardwood log for seating and play
- 36. Bird nesting box (STEM teaching aid)
- 37. Sand pit
- 38. Shade sails with timber shade posts
- 39. Class 1 hardwood log for seating and play
- 40. Low deck with skillion roof for tummy and back play
- 41. Sand pit with sandstone boulder edge (use sandstone from site where possible)
- 42. Concrete sleeper stepping stone path through garden
- 43. Timber deck with bubble viewing panels
- 44. Rustic tee pee
- 45. Net play structure
- 46. Retractable awning (by others)
- 47. Synthetic grass mounds
- 48. Texture path
- 49. Gate to Nursery Yard
- 50. Concrete sleeper stepping stone path through garden
- 51. Class 1 hardwood log for seating and play
- 52. Timber stage with top rail
- 53. Shade tree in garden
- 54. Retractable awning (by others)
- 55. Large feature pots with fruit trees
- 56. Class 1 hardwood stepping logs for seating
- 57. Tractor (Supplied by Orchard)
- 58. Large feature pots with fruit trees
- 59. Large feature pots with fruit trees
- 60. Hardwood log seat
- 61. Outdoor lounge setting including portable coffee table, rattan rug and lounge chairs (supplied by Orchard)
- 62. Fencing to nursery yard is a combination of Black pool fence with hardwood posts and rustic timber fencing (1m High)

**NOTE: USE EXCAVATED SANDSTONE FROM SITE WHERE POSSIBLE**

**Surfacing**

- A. Travertine-look tile with external grip. Tiles to be laid in ashlar pattern 600x300 and 300x300 (by others)
- B. Synthetic grass with impact attenuation
- C. Decomposed granite
- D. Coloured concrete path
- E. Mulch playspace
- F. Concrete dry creek bed with embedded pebbles
- G. Recycled brick paving



**ORCHARD EARLY LEARNING CENTRE, FORESTVILLE**

Concept and Landscape Plan  
31st August 2021



Scale 1:100 @ A1  
Scale bar: 0 1 2 3 5 10





- KEY:**
- ELEMENTS**
- 01. Mirror panel with timber frame fixed to wall
  - 02. Synthetic grass mounds
  - 03. Rattan cane pendent lights (supplied and installed by Orchard)
  - 04. Rustic pots
  - 05. Outdoor lounge setting including portable shade umbrella, coffee table, lounge chairs and rattan rug (supplied by Orchard)
  - 06. Beam bags (supplied by Orchard)
  - 07. Portable timber tables for outdoor classes (supplied by Orchard)
  - 08. Hardwood log seats
  - 09. hammocks fixed to beams in ceiling (supplied and installed by Orchard)
  - 10. Structural beams for hanging hammocks (by others)
  - 11. 1.2m H Book shelf/ Arts & Crafts storage
  - 12. 1.6m H Timber screen with blackboard
  - 13. Portable lounge chairs (supplied by Orchard)
  - 14. Rattan wicker rug (supplied by Orchard)
  - 15. Outdoor lounge setting including portable coffee table and lounge chairs (supplied by Orchard)
- SURFACES**
- A. Travertine-look tile with external grip. Tiles to be laid in ashlar pattern 600x300 and 300x300 (by others)
  - B. Synthetic grass



INDICATIVE IMAGE ONLY  
OUTDOOR FURNITURE BY OTHERS



INDICATIVE IMAGE ONLY  
OUTDOOR FURNITURE BY OTHERS



INDICATIVE IMAGE ONLY  
OUTDOOR FURNITURE BY OTHERS



INDICATIVE IMAGE ONLY  
OUTDOOR FURNITURE BY OTHERS



INDICATIVE IMAGE ONLY  
OUTDOOR FURNITURE BY OTHERS



04



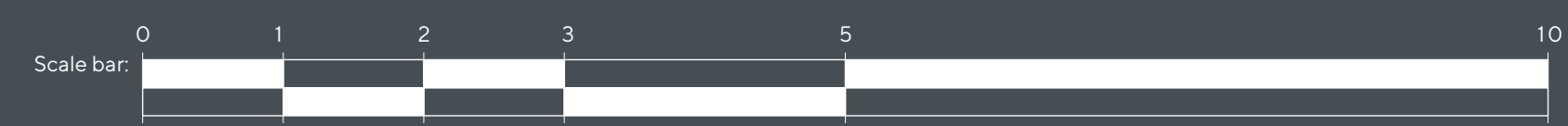
04



01



02  
08



Scale 1:50 @ A1

**ORCHARD EARLY LEARNING CENTRE, FORESTVILLE**

Concept and Landscape Plan - School Readiness Balcony  
31st August 2021