

# 8 COASTVIEW PLACE, FRESHWATER

## STORMWATER MANAGEMENT PLAN

DRAWING NUMBER	REVISION	DRAWING TITLE
DR-000	1	LEGEND
DR-001	2	PIPE LAYOUT-ROOF & GROUND FLOOR LEVEL
DR-002	2	PIPE LAYOUT-LOWER GROUND FLOOR LEVEL
DR-003	1	ROOF LAYOUT
DR-004	1	SITE AREAS
SD-001	1	SEDIMENT & EROSION CONTROL PLAN

NOTES:

1. ALL DIMENSIONS TO BE CONFIRMED ON SITE PRIOR TO CONSTRUCTION.

2. SITE LAYOUT BASED ON ARCHITECTURAL PLANS BY HUMEL ARCHITECTS (07/09/2018).

3. LOCATION OF ALL SERVICES MUST BE CONFIRMED ON SITE PRIOR TO COMMENCEMENT OF EXCAVATION WORKS.

4. ALL STORMWATER DRAINAGE PIPES AND ASSOCIATED DEVICES ARE TO BE INSTALLED IN ACCORDANCE WITH THE RELEVANT STANDARDS, THE BUILDING CODE OF AUSTRALIA, MANUFACTURER’S RECOMMENDATIONS, SYDNEY CATCHMENT AUTHORITY RECOMMENDED PRACTICE, AND LOCAL COUNCIL, AS APPLICABLE.

5. ALL INVERT LEVELS PROVIDED ON THIS DRAWING ARE REDUCED TO AHD AND BASED ON INTERPOLATED SURFACE LEVELS AND SYSTEM REQUIREMENTS
6. WHERE POSSIBLE, PIPEWORK SHALL BE LOCATED EXTERNAL TO THE BUILDING.

7. DOWNPIPES AND STORMWATER LINES TO BE SEALED DN100 uPVC UNLESS OTHERWISE NOTED.

8. STORMWATER PIPES TO BE GRADED AT A MINIMUM 1% UNLESS NOTED OTHERWISE.


9. ALTERNATIVE GUTTER AND DOWNPIPE CONFIGURATION MAY BE INSTALLED PROVIDED IT COMPLIES WITH AS3500.

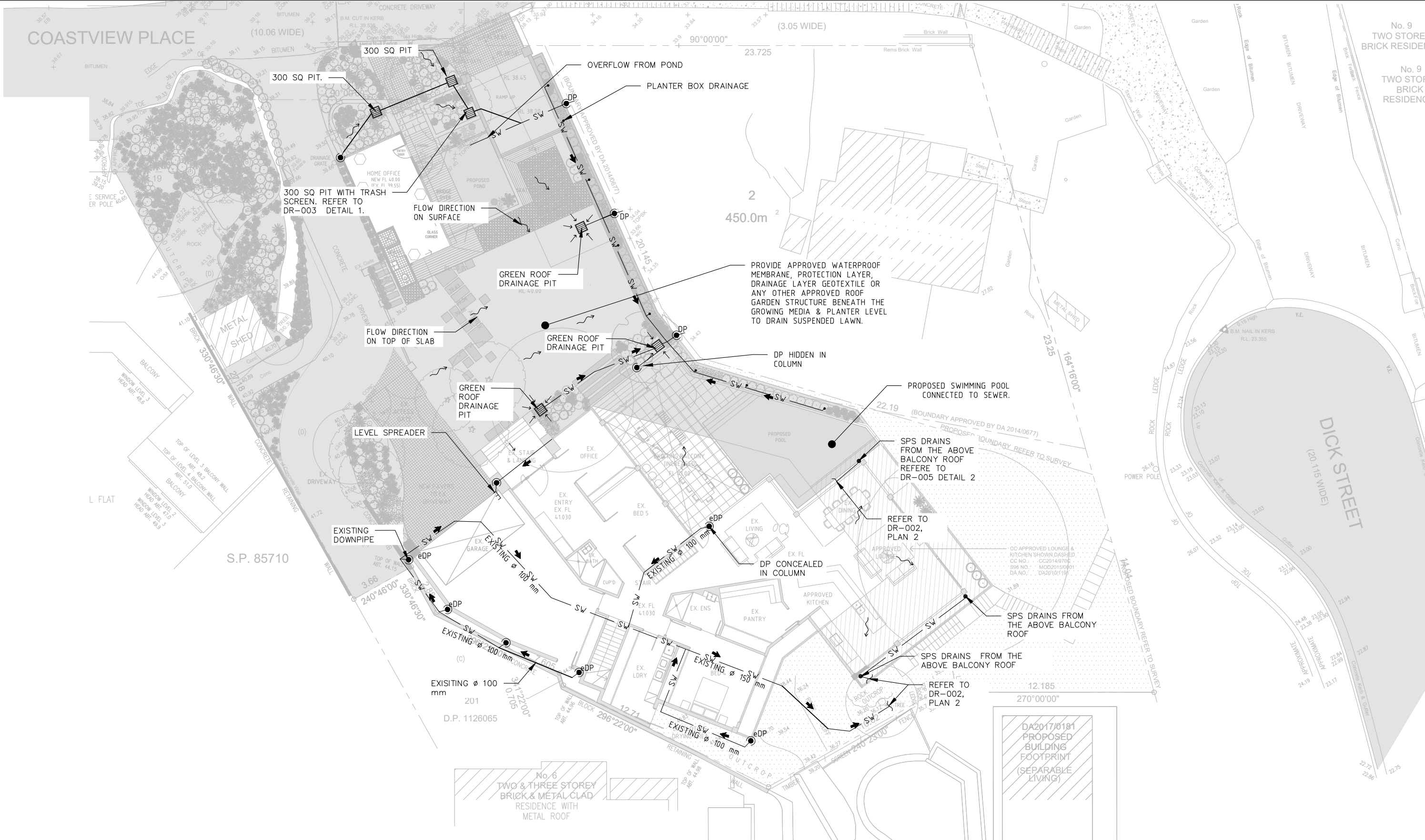
10. ALL PIPE AND CONDUITS TO BE MARKED IN ACCORDANCE WITH AS1345 – 1995.

11. TRENCHES AND SERVICE SEPARATIONS IN ACCORDANCE WITH AS/NZS 5601, AS/NZS 3500, AND AS/CA S009.

LEGEND:

- DOWNPIPE
- STORMWATER PIPE
- DRAINAGE PIT
- INSPECTION OPENING

This drawing is confidential and shall only be used for the purposes of this project.						Scale		THE SIGNING OF THIS TITLE BLOCK CONFIRMS THE DESIGN AND DRAFTING OF THIS PROJECT HAVE BEEN PREPARED AND CHECKED IN ACCORDANCE WITH THE STELLEN QUALITY ASSURANCE SYSTEM				<div> Stellen</div> <div>Stellen Consulting ABN 61 149 095 189</div>		This design complies with: AS3500.3:2015		8 COASTVIEW PLACE, FRESHWATER				
REVISIONS					NA				LEGEND											
	1	YYA	31/01/2019	APPROVED FOR DA SUBMISSION	IRW															
0	YYA	15/01/2019	APPROVED FOR DA SUBMISSION	IRW												Size	A3	Status	APPROVED FOR DA SUBMISSION	Drwg No.
No.	BY	DATE	DESCRIPTION		APPD	DO NOT SCALE. ALL DIMENSIONS ARE IN MILLIMETRES UNLESS OTHERWISE SPECIFIED														



PLAN  
1

PIPE LAYOUT-ROOF AND GROUND FLOOR LEVEL

1:200

REVISIONS				
No.	BY	DATE	DESCRIPTION	APPD
2	YYA	31/01/2019	APPROVED FOR DA SUBMISSION	IRW
1	YYA	15/01/2019	APPROVED FOR DA SUBMISSION	IRW
B	IRW	3/12/2018	UPDATED TITLE BLOCK	IRW
A	IRW	15/11/2018	CONCEPT	IRW
0	YYA	12/11/2018	CONCEPT	IRW

Scale	
1:200	
DO NOT SCALE. ALL DIMENSIONS ARE IN MILLIMETRES UNLESS OTHERWISE SPECIFIED	

THE SIGNING OF THIS TITLE BLOCK CONFIRMS THE DESIGN AND DRAFTING OF THIS PROJECT HAVE BEEN PREPARED AND CHECKED IN ACCORDANCE WITH THE STELLEN QUALITY ASSURANCE SYSTEM			
DESIGNED	YYA	CHECKED	IRW
DRAWN	YYA	CHECKED	IRW
APPROVED	IRW	DATE	31/01/2019



Stellen Consulting ABN 61 149 095 189

This design complies with:  
AS3500.3:2015

8 COASTVIEW PLACE, FRESHWATER			
PIPE LAYOUT- ROOF AND GROUND FLOOR LEVEL			
Size	A3	Status	APPROVED FOR DA SUBMISSION
Org No.	DR-001	Rev.	2





PLAN  
2

PIPE LAYOUT-LOWER GROUND FLOOR LEVEL

1:200

REVISIONS				
No.	BY	DATE	DESCRIPTION	APPD
2	YYA	31/01/2019	APPROVED FOR DA SUBMISSION	IRW
1	YYA	15/01/2019	APPROVED FOR DA SUBMISSION	IRW
B	IRW	3/12/2018	UPDATED TITLE BLOCK	IRW
A	IRW	15/11/2018	CONCEPT	IRW
0	YYA	12/11/2018	CONCEPT	IRW

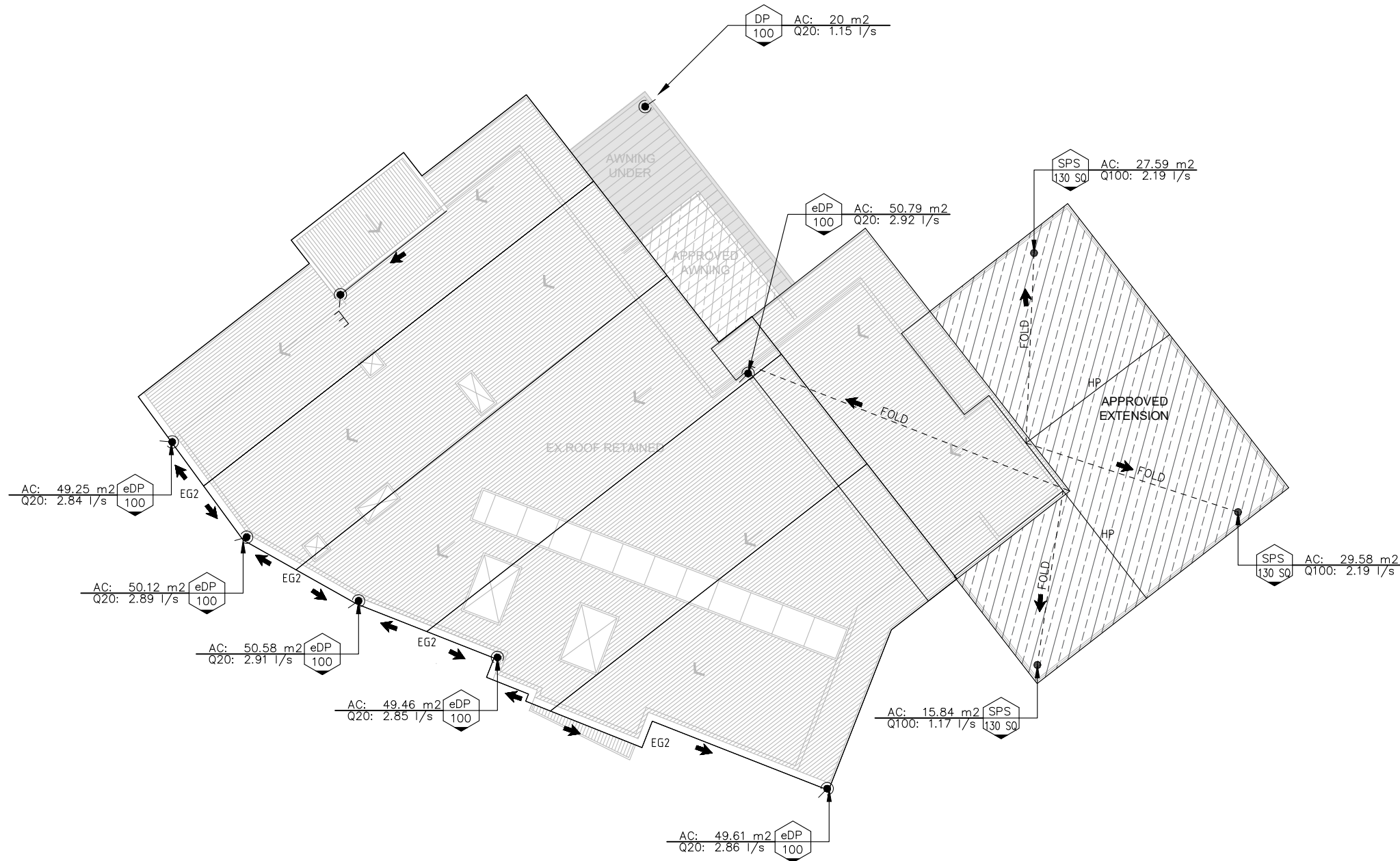
Scale  
**1:200**  
DO NOT SCALE. ALL DIMENSIONS ARE IN MILLIMETRES UNLESS OTHERWISE SPECIFIED

THE SIGNING OF THIS TITLE BLOCK CONFIRMS THE DESIGN AND DRAFTING OF THIS PROJECT HAVE BEEN PREPARED AND CHECKED IN ACCORDANCE WITH THE STELLEN QUALITY ASSURANCE SYSTEM			
DESIGNED	YYA	CHECKED	IRW
DRAWN	YYA	CHECKED	IRW
APPROVED	IRW	DATE	31/01/2019



This design complies with:  
AS3500.3:2015

8 COASTVIEW PLACE, FRESHWATER				
PIPE LAYOUT-LOWER GROUND FLOOR LEVEL				
Size	A3	Status	APPROVED FOR DA SUBMISSION	Drwg No.
			DR-002	Rev.
				2

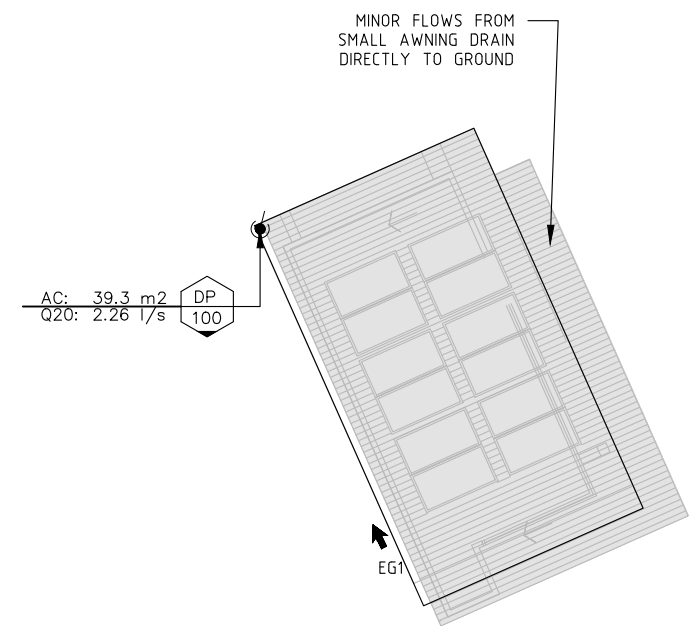


PLAN 3  
ROOF LAYOUT—MAIN DWELLING  
1: 200

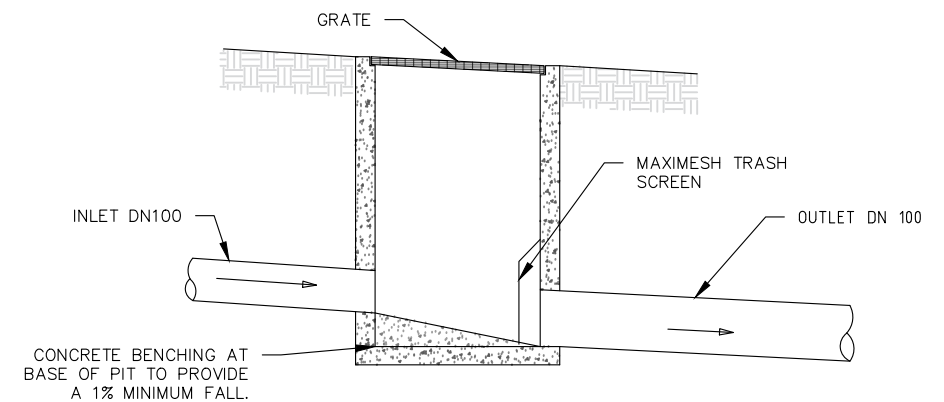
**NOMENCLATURE**  
 DP - DOWNPIPE  
 eDP - EXISTING DOWNPIPE  
 LS - LEVEL SPREADER  
 EG - EAVES GUTTER  
 HP - EAVE GUTTER HIGH POINT  
 AC - PLAN CATCHMENT AREA EXCLUDING ROOF PITCH  
 Q20 - 20YR 5 MINUTE ARI FLOW RATE  
 Q100 - 100YR 5 MINUTE ARI FLOW RATE

**GUTTER SIZING**  
 EAVES GUTTER DESIGNED TO ARI (20YR:202mm/hr)  
 SPS DESIGNED TO ARI (100YR:264mm/hr)  
 EG1 - MIN CSA 8,200 mm<sup>2</sup>  
 EG2 - MIN CSA 9,200 mm<sup>2</sup>

**LEGEND**  
 DOWNPIPE TYPE AND DIAMETER  
 DIRECTION OF FALL  
 LEVEL SPREADER




PLAN 4  
ROOF LAYOUT—OFFICE  
1: 200

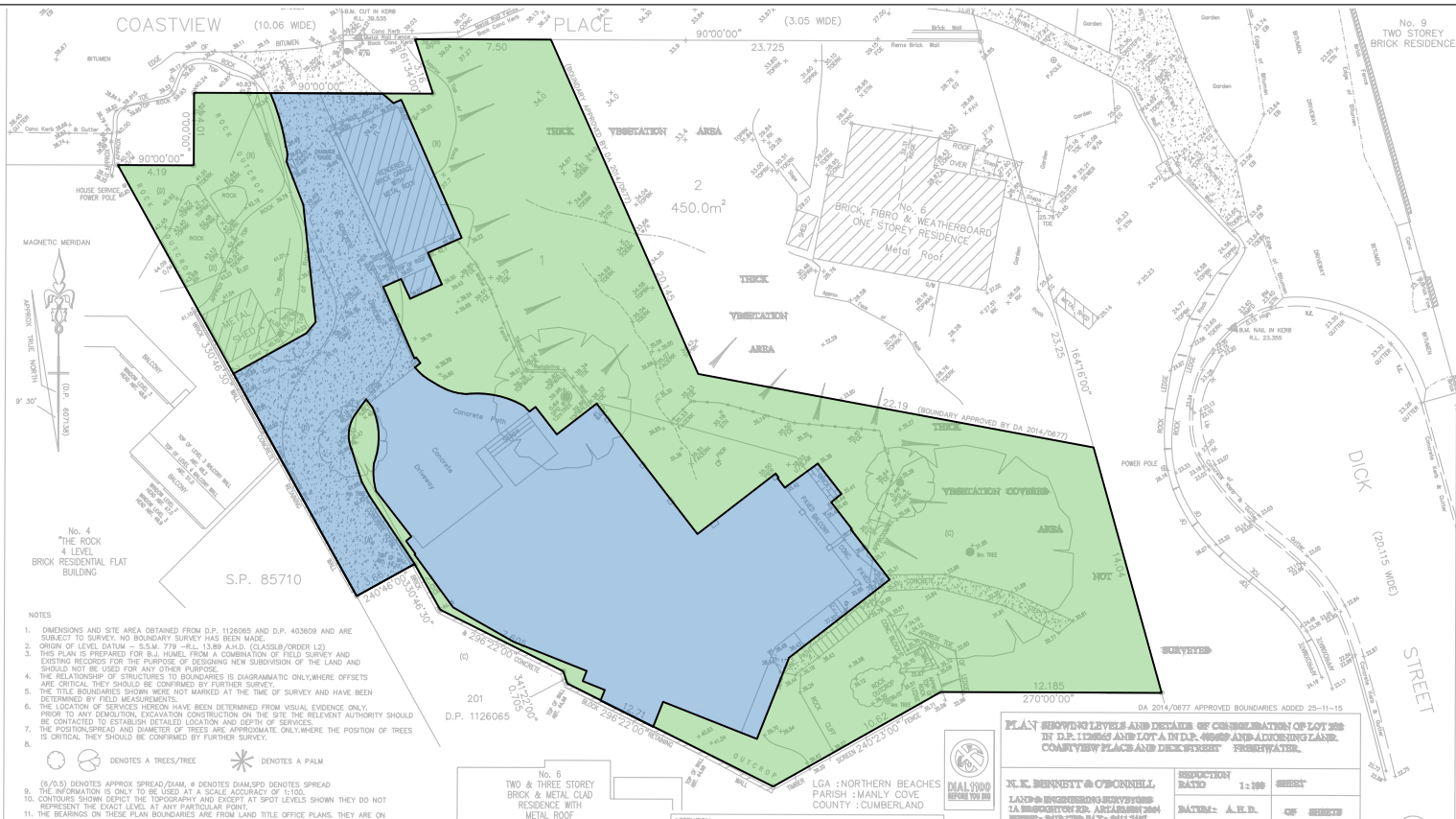


DETAIL 1  
300 SQUARE MEDIUM DUTY PIT  
NOT TO SCALE

- NOTES:**
1. 'LYSAGHT' MAXIMESH RH3030 (HOT DIPPED GALVANISED) OR EQUIVALENT.
  2. MAXI MESH SCREENS MUST BE PLACED SUCH THAT THE LONG AXIS OF THE OVAL SHAPED HOLES ARE ORIENTATED HORIZONTALLY WITH THE PROTRUDING LIP ANGLED UPWARDS AND FACING TOWARDS THE OUTLET.

This drawing is confidential and shall only be used for the purposes of this project.					Scale	AS NOTED	DO NOT SCALE. ALL DIMENSIONS ARE IN MILLIMETRES UNLESS OTHERWISE SPECIFIED	THE SIGNING OF THIS TITLE BLOCK CONFIRMS THE DESIGN AND DRAFTING OF THIS PROJECT HAVE BEEN PREPARED AND CHECKED IN ACCORDANCE WITH THE STELLEN QUALITY ASSURANCE SYSTEM				 Stellen	This design complies with: AS3500.3:2015	8 COASTVIEW PLACE, FRESHWATER						
								DESIGNED	YYA	CHECKED	IRW			ROOF LAYOUT						
								DRAWN	YYA	CHECKED	IRW									
								APPROVED	IRW	DATE	31/01/2019									
REVISIONS	1	YYA	31/01/2019	APPROVED FOR DA SUBMISSION	IRW															
	0	YYA	15/01/2019	APPROVED FOR DA SUBMISSION	IRW															
	No.	BY	DATE	DESCRIPTION	APPD															
									Stellen Consulting ABN 61 149 095 189											
					Size		A3		Status		APPROVED FOR DA SUBMISSION		Drw No.		DR-003		Rev.		1	





EXISTING	
SITE AREA:	1152 m <sup>2</sup>
PERVIOUS:	677.45 m <sup>2</sup> (58.8%)
IMPERVIOUS:	474.55 m <sup>2</sup> (41.2%)


LEGEND	
PERVIOUS	
IMPERVIOUS	
POOL	

PLAN 5  
SITE AREAS – EXISTING  
1: 400



PROPOSED	
LANDSCAPED AREA :	540.7 m <sup>2</sup> (46.93 %)
REFER TO ARCHITECTURAL DRAWING DA12 FOR BREAKDOWN	
OSD REQUIREMENTS:	
IN ACCORDANCE WITH WARRINGAH COUNCIL ON-SITE STORMWATER DETENTION TECHNICAL SPECIFICATION, ALL DEVELOPMENT APPLICATIONS FOR ALTERATIONS AND ADDITIONS FOR SINGLE RESIDENTIAL DWELLINGS WILL NOT REQUIRE OSD.	

PLAN 6  
SITE AREAS – PROPOSED  
1: 400

This drawing is confidential and shall only be used for the purposes of this project.					Scale	NA	DO NOT SCALE. ALL DIMENSIONS ARE IN MILLIMETRES UNLESS OTHERWISE SPECIFIED	THE SIGNING OF THIS TITLE BLOCK CONFIRMS THE DESIGN AND DRAFTING OF THIS PROJECT HAVE BEEN PREPARED AND CHECKED IN ACCORDANCE WITH THE STELLEN QUALITY ASSURANCE SYSTEM				 Stellen Consulting ABN 61 14 9 095 189	This design complies with: AS3500.3:2015	8 COASTVIEW PLACE, FRESHWATER																																																																																																																																																																																																																																																																																																																																																																																																																																																																																																																																																																																																																																																			
								DESIGNED YYA CHECKED IRW						SITE AREAS																																																																																																																																																																																																																																																																																																																																																																																																																																																																																																																																																																																																																																																			
								DRAWN YYA CHECKED IRW																																																																																																																																																																																																																																																																																																																																																																																																																																																																																																																																																																																																																																																									
								APPROVED IRW DATE 31/01/2019																																																																																																																																																																																																																																																																																																																																																																																																																																																																																																																																																																																																																																																									
														Size A3	Status APPROVED FOR DA SUBMISSION	Drwg No. DR-004	Rev. 1																																																																																																																																																																																																																																																																																																																																																																																																																																																																																																																																																																																																																																																
REVISIONS																																																																																																																																																																																																																																																																																																																																																																																																																																																																																																																																																																																																																																																																	





PLAN  
7

SEDIMENT & EROSION CONTROL PLAN—ROOF AND GROUND FLOOR LEVEL  
1: 400



PLAN  
8

SEDIMENT & EROSION CONTROL PLAN—LOWER GROUND FLOOR LEVEL  
1: 400

## GENERAL REQUIREMENTS

THE FOLLOWING EROSION AND SEDIMENT CONTROL PLAN (ESCP) HAS BEEN DEVELOPED IN GENERAL ACCORDANCE WITH LANDCOM (2004) – MANAGING URBAN STORMWATER: SOILS AND CONSTRUCTION, OTHERWISE KNOWN AS "THE BLUE BOOK". THIS PLAN SHOULD ALSO BE READ IN CONJUNCTION WITH MANAGING URBAN STORMWATER – SOILS AND CONSTRUCTION (VOLUME 2A INSTALLATION OF SERVICES).

## SITE ESTABLISHMENT

PRIOR TO THE COMMENCEMENT OF EARTHWORKS ON THE SITE THE FOLLOWING SHALL BE UNDERTAKEN AS A MINIMUM:

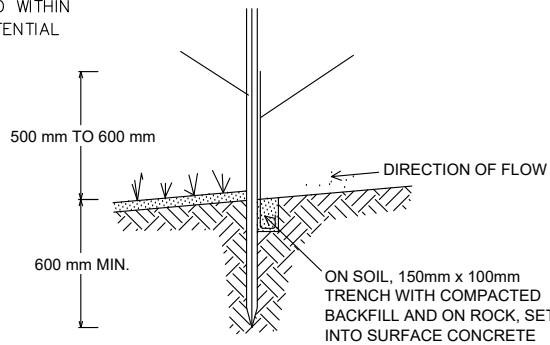
1. ERECT SAFETY FENCING WITH SIGNAGE CLEARLY INDICATING THAT THE SITE IS A CONSTRUCTION ZONE AND ACCESS IS RESTRICTED AS DEEMED NECESSARY.
2. ERECT CLEARLY VISIBLE BARRIER FENCING AT LOCATIONS SHOWN OR IF NOT SHOWN AT THE DISCRETION OF THE SITE SUPERINTENDENT TO ENSURE TRAFFIC IS CONTROLLED AND TO PROHIBIT UNNECESSARY SITE DISTURBANCE.
3. WHERE REQUIRED AT THE DISCRETION OF THE SITE SUPERINTENDENT, INSTALL STABILISED SITE ACCESS AT SITE ACCESS POINT TO PREVENT CONSTRUCTION EQUIPMENT FROM CARRYING SEDIMENT OFF THE SITE ONTO SURROUNDING ROADS.
4. PROVIDE GERNI PRESSURE CLEANER AT SITE EXIT POINT FOR TYRE WASH DOWN AT THE DISCRETION OF THE SITE SUPERINTENDENT.
5. INSTALL SEDIMENT AND EROSION CONTROL DEVICES IN ACCORDANCE WITH THE CONSTRUCTION DETAILS SPECIFIED IN THIS DRAWING SET AND/OR THE REQUIREMENTS OF THE 'BLUE BOOK'.

## CONSTRUCTION

6. USE SANDBAGS, HAY BALES AND/OR GRAVEL FILLED GEOTEXTILE SOCKS TO FILTER AND CONVEY STORMWATER RUNOFF WITHIN THE SITE.
7. ALL DRAINAGE WORKS SHALL BE CONSTRUCTED AND STABILISED AS EARLY AS POSSIBLE DURING DEVELOPMENT.
8. INLET FILTERS SHALL BE INSTALLED WHERE SHOWN TO PREVENT WATER FROM DIRECTLY ENTERING THE PERMANENT DRAINAGE SYSTEM UNLESS IT IS RELATIVELY SEDIMENT FREE. IF THE LOCATION OF INLET FILTERS ARE NOT SHOWN ON THE PLAN THEIR LOCATION SHALL BE AT THE DISCRETION OF THE SUPERINTENDENT.
9. STAGE WORK AND PROGRAMMING OF CONSTRUCTION ACTIVITIES TO MINIMISE THE EXTENT AND DURATION OF OPEN EXCAVATION. AVOID OPENING TRENCHES WHENEVER THE RISKS OF STORMS ARE HIGH.
10. DIVERT SURFACE WATER AWAY FROM EXCAVATION AREAS WITH SANDBAGS OR EQUIVALENT.
11. FOR DEWATERING OF EXCAVATION AREAS SET UP TEMPORARY DEWATERING PUMP OUT SYSTEM AS REQUIRED AND ENSURE FLOCCULATION IS USED IF WATER IS NOT CLEAR (i.e. SEDIMENT > 50mg/L). FOR RATES AND AGENTS REFER APPENDIX E NSW DEPARTMENT OF HOUSING "MANAGING URBAN STORMWATER SOILS & CONSTRUCTION". DISCHARGE SHALL BE DIRECTLY TO COUNCIL'S PIPED DRAINAGE SYSTEM. DO NOT DISCHARGE TO THE KERB.
12. STOCKPILES SHALL BE LOCATED NO CLOSER THAN 2m (PREFERABLY 5m) FROM CONCENTRATED WATER FLOW, ROADS AND HAZARD AREAS. PROTECT STOCKPILES FROM EROSION BY RAIN AND SURFACE FLOWS.
13. ENSURE CHEMICAL AND FUELS ARE STORED WITHIN BUNDED AREAS AND ELEVATED ABOVE POTENTIAL FLOW PATHS.

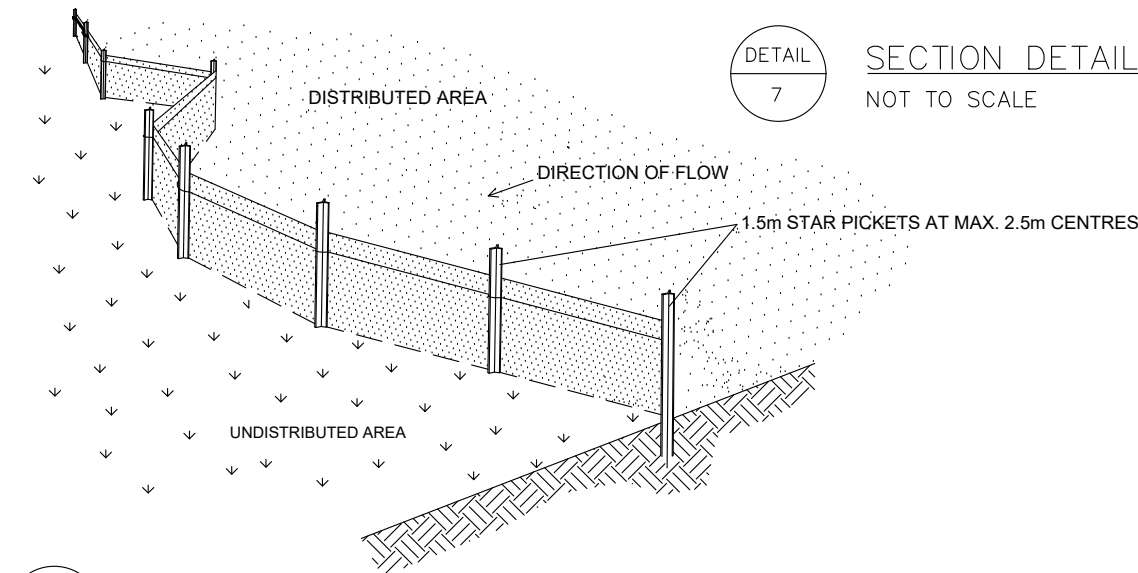
## MAINTENANCE

14. ALL DEDICATED SEDIMENT STORAGE ZONES WITHIN TRAPS SHALL BE CLEANED WHEN A MAXIMUM OF 60% FULL OF SOLID MATERIALS AND DISPOSED OF IN A MANNER THAT PREVENTS FURTHER POLLUTION OF THE SITE.
15. TEMPORARY SEDIMENT AND EROSION CONTROL DEVICES WILL BE RETAINED UNTIL EARTHWORK ACTIVITIES ARE COMPLETED AND THE SITE IS STABILISED.
16. THE CONTRACTOR SHALL INSPECT THE SITE AT LEAST WEEKLY AND AFTER ANY STORM EVENT AND WILL:
  - ENSURE THAT DRAINS OPERATE PROPERLY AND TO EFFECT ANY NECESSARY REPAIRS;
  - REMOVE SPILLED SAND OR OTHER MATERIALS FROM AREAS OF LIKELY CONCENTRATED OR HIGH VELOCITY FLOWS (ESPECIALLY DRAINS AND TEMPORARY FLOW PATHS)
  - REMOVE TRAPPED SEDIMENT WHENEVER LESS THAN DESIGN CAPACITY REMAINS WITHIN THE STRUCTURE;
  - CONSTRUCT ADDITIONAL EROSION AND/OR SEDIMENT CONTROL WORKS AS REQUIRED;
  - MAINTAIN EROSION AND SEDIMENT CONTROL MEASURES IN A FULLY FUNCTIONING CONDITION UNTIL ALL EARTHWORK ACTIVITIES ARE COMPLETED AND THE SITE IS STABILISED; AND
  - REMOVE TEMPORARY EROSION AND SEDIMENT CONTROL STRUCTURES AS THE LAST ACTIVITY IN THE CONSTRUCTION PROGRAM.



DETAIL  
7

SECTION DETAIL  
NOT TO SCALE



DETAIL  
6

TYPICAL SEDIMENT FENCE  
NOT TO SCALE

REVISIONS				
No.	BY	DATE	DESCRIPTION	APPD
1	YYA	31/01/2019	APPROVED FOR DA SUBMISSION	IRW
0	YYA	15/01/2019	APPROVED FOR DA SUBMISSION	IRW

NA
DO NOT SCALE. ALL DIMENSIONS ARE IN MILLIMETRES UNLESS OTHERWISE SPECIFIED

THE SIGNING OF THIS TITLE BLOCK CONFIRMS THE DESIGN AND DRAFTING OF THIS PROJECT HAVE BEEN PREPARED AND CHECKED IN ACCORDANCE WITH THE STELLEN QUALITY ASSURANCE SYSTEM			
DESIGNED	YYA	CHECKED	IRW
DRAWN	YYA	CHECKED	IRW
APPROVED	IRW	DATE	31/01/2019



Stellen Consulting ABN 61 149 095 189

This design complies with:  
AS3500.3:2015

8 COASTVIEW PLACE, FRESHWATER				
SEDIMENT & EROSION CONTROL PLAN				
Size	A3	Status	APPROVED FOR DA SUBMISSION	Rev
		Org No.	SD-001	1