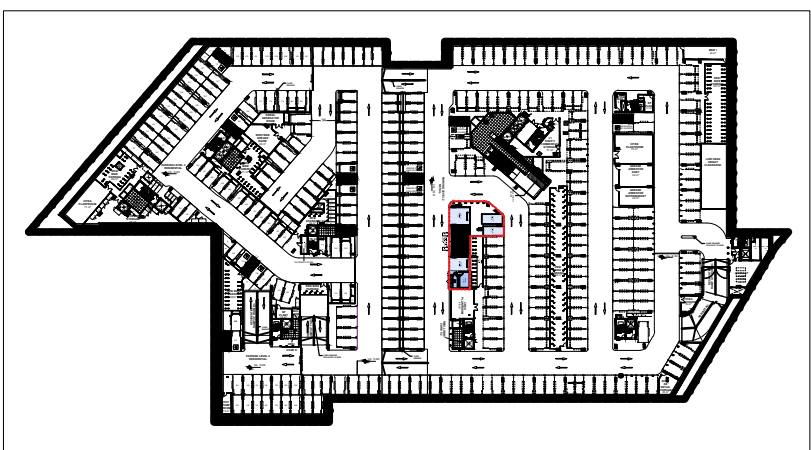


PROPOSED CAR BAY WASH PLAN - LEVEL P2
SCALE: 1:100



SITE / LOCATION PLAN - BASEMENT LEVEL P2
SCALE: 1:2000

SELF CONTAINED WASH BAY DETAILS:

- Drive-thru configuration
- 8m wide x 6m deep Bay
- Clear Wall Paneling
- Grated Flooring
- Fiberglass Tub
- Ramps at Entrance and Exit
- 2 x Wall Mounted Stainless Steel Water Reels (connected to Pressure Washers) within each Bay
- 1 x Wall Mounted Air Reel (connected to air compressor within each Bay)
- Ceiling Mounted Lighting
- 1 x Double GPO Waterproof powerpoints located within each bay

WATER TREATMENT SYSTEM DETAILS:

- Supply and install Eclipse Hydroflow HYD1000S oil water separator and connect to wash bay.
- Able to process 1000 litres per hour
- Stainless Steel Construction
- Diaphragm Pump, stand and float switch
- Pump Box

PLANT ROOM & EQUIPMENT DETAILS:

- Approx 2m x 4.6m Plant Room with lockable door
- 2 x Industrial Standard Pressure Washers
- 1 x 3HP Air Compressor
- 2 x Wet/Dry Vacuums (2 motor)
- 1 x Bunded Chemical Tray
- Wash Tub
- Lighting
- 4 x Double GPO Waterproof Power Points
- Smoke Detector/Emergency Exit sign
- Fire Extinguisher
- Plumbing for Washing Machine

OFFICE DETAILS:

- Approx 2.5m x 3 m Office with Lockable door
- Lockable window with counter
- Lighting
- 4 x Double GPO Waterproof Power Points
- Smoke Detector/Emergency Exit sign

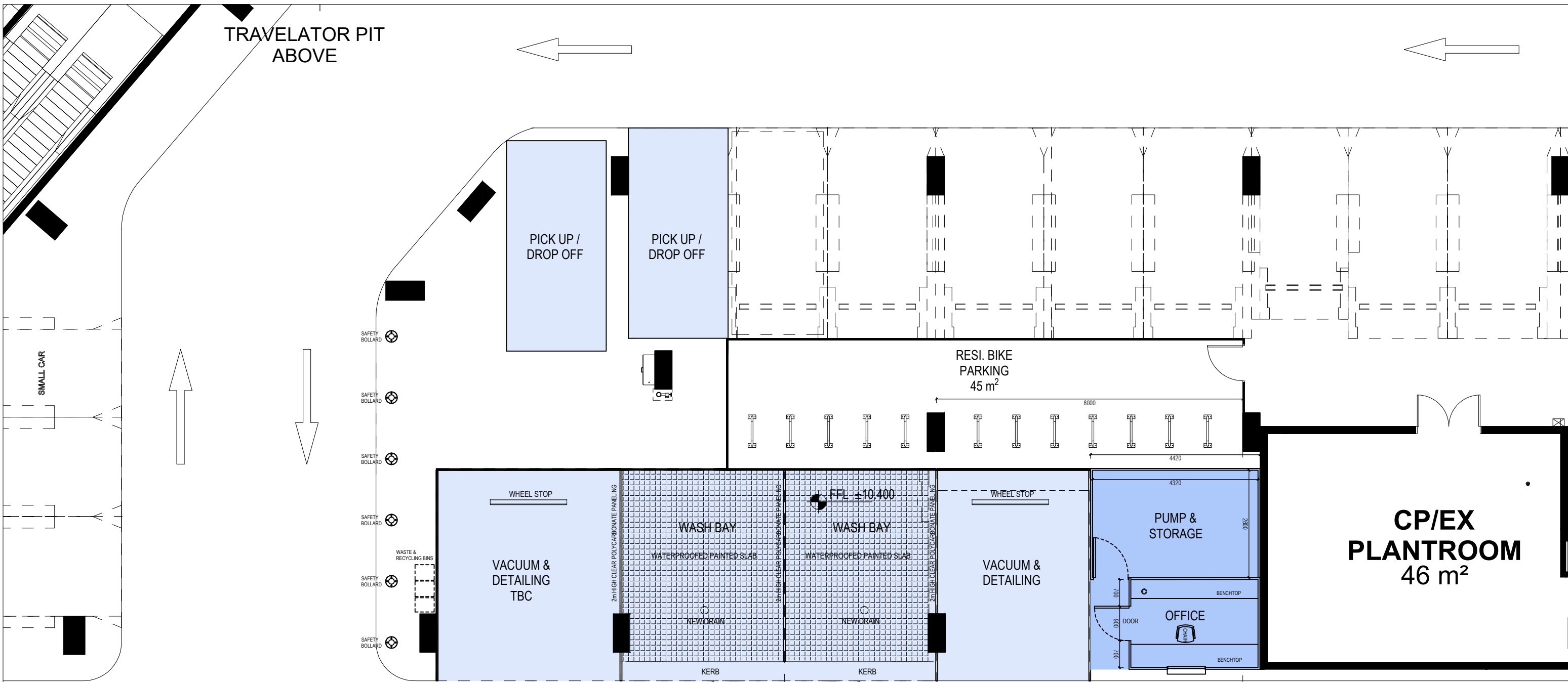


THIS PLAN IS TO BE READ IN CONJUNCTION WITH THE CONDITIONS OF DEVELOPMENT CONSENT

 DA2022/1395

Rev	Description	Date
1	ISSUED FOR DA SUBMISSION	2020-06-16
2	ISSUED FOR DA SUBMISSION	2021-07-28

TRAVELATOR PIT ABOVE



PROPOSED CAR BAY WASH PLAN - LEVEL P2
SCALE: 1:100

EXISTING SERVICES (FIRE, HYDRAULIC, COMMS, DUCTING, ETC) RUNNING UNDERSIDE OF CONCRETE SLAB TO REMAIN UNALTERED.

PARKING LEVEL 2
RETAIL

SSL. 10.300

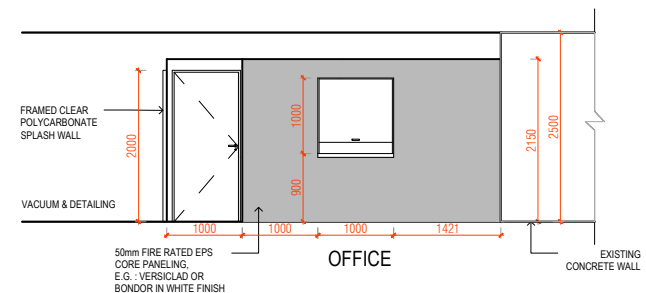
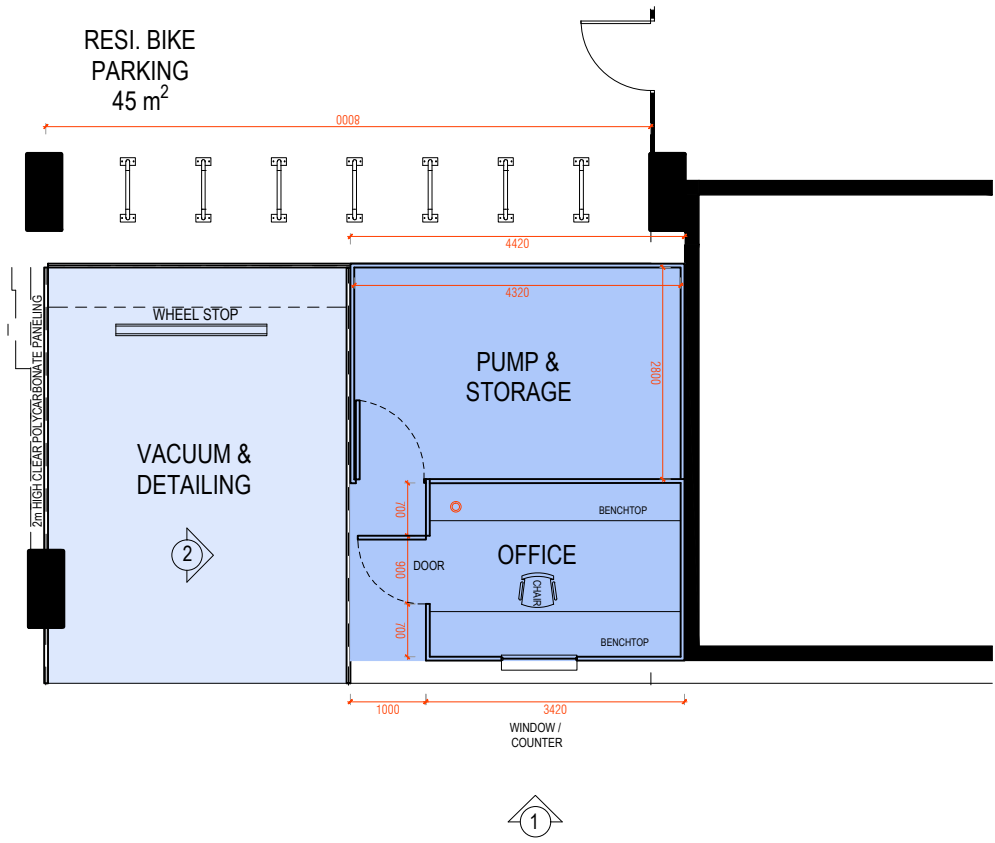
 northern beaches council
THIS PLAN IS TO BE READ IN CONJUNCTION WITH THE CONDITIONS OF DEVELOPMENT CONSENT
DA2022/1395

Rev	Description	Date
1	ISSUED FOR DA SUBMISSION	2021.07.28

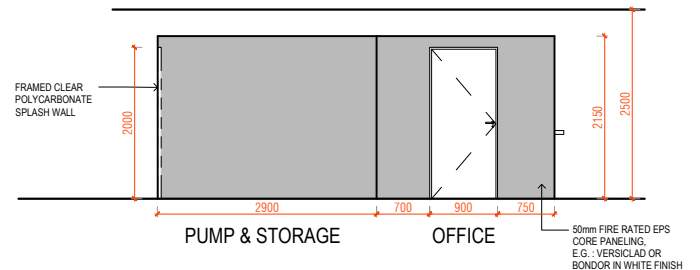
northern beaches council

THIS PLAN IS TO BE READ IN CONJUNCTION WITH THE CONDITIONS OF DEVELOPMENT CONSENT

DA2022/1395



1 ELEVATIONS - OFFICE



2 ELEVATIONS - OFFICE



50mm FIRE RATED EPS CORE PANELING, E.G. : VERSICLAD OR BONDOR IN WHITE FINISH



OFFICE AREA ONLY (OPTIONAL) COMMERCIAL GRADE VINYL FLOORING



EXAMPLE OF A COUNTER WINDOW



CLEAR POLYCARBONATE FOR SPLASH WALLS, GRAPHICS & SIGNAGE BY OTHERS

PLEASE NOTE:
THIS DOCUMENT IS UNDER CONSTANT REVIEW AND PRONE TO CHANGE DURING CONSTRUCTION. DO NOT SCALE DRAWINGS MANUALLY OR ELECTRONICALLY. ALL INFORMATION TO BE CHECKED AND VERIFIED ON SITE BY THE BUILDER. IN THE EVENT OF DISCREPANCIES REFER TO ARCHITECT PRIOR TO COMMENCEMENT OF THE WORK. THIS DOCUMENT DESCRIBES THE INTENT OF DESIGN ONLY, DETAILS AND/OR FINISHES, SIZES AND RELATIONSHIPS OF ROOMS, BUILDING ENVELOPE. IT IS TO BE READ IN CONJUNCTION WITH ALL RELEVANT SPECIFICATIONS, CONSULTANT AND SERVICES DOCUMENTATION. THIS DOCUMENT IS THE COPYRIGHT OF COLLARD MAXWELL ARCHITECTS Pty. Ltd.

Rev	Description	Date
1	ISSUED FOR DA SUBMISSION	2021-06-30
2	ISSUED FOR DA SUBMISSION	2021-07-28