



ARCHITECTURE
STRATEGY
INTERIORS
BRAND

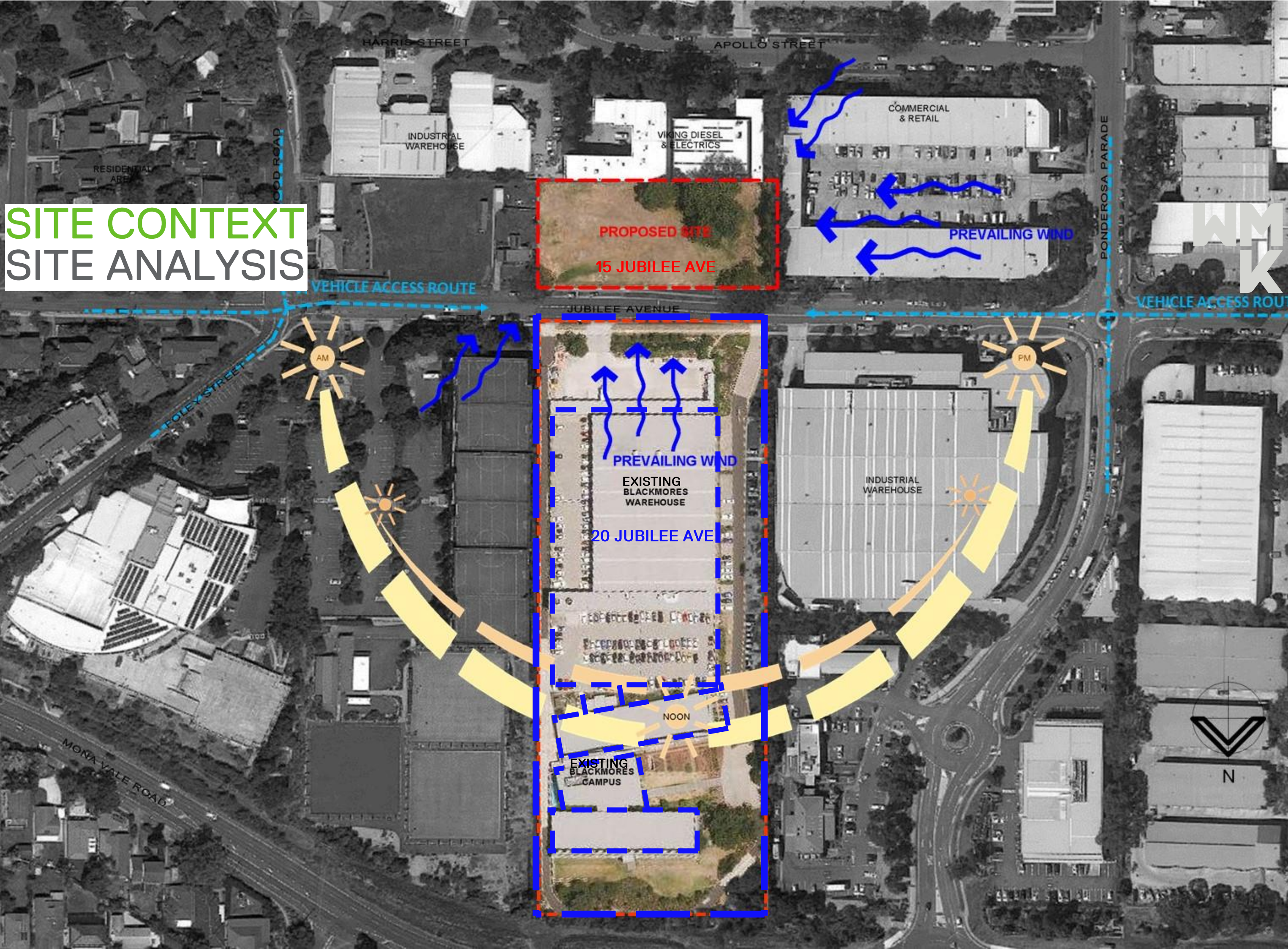
WMK
ARCHITECTURE



URBAN DESIGN
CONCEPT FOR
BLACKMORES
CAMPUS
EXTENSION

30.06.2016

SITE CONTEXT SITE ANALYSIS

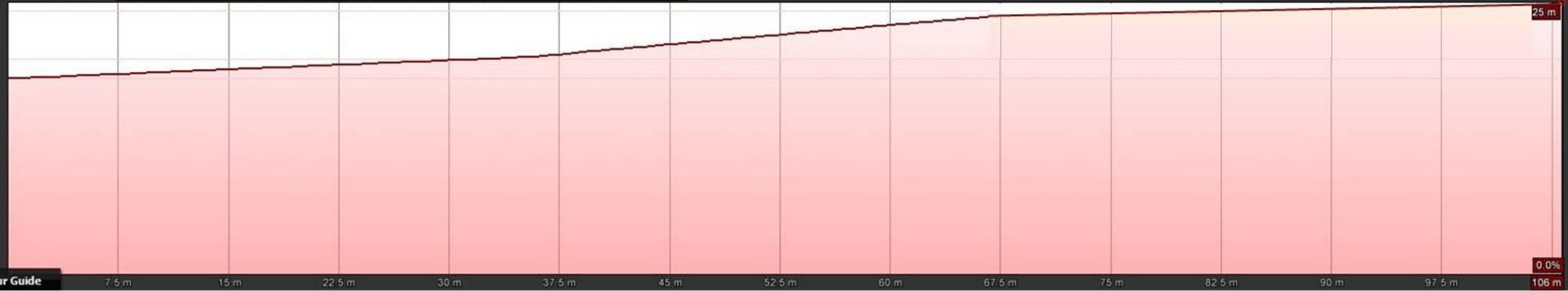


CAMPUS EXTENSION SITE TOPOGRAPHY



Imagery Date: 10/16/2015 33°40'42.94" S 151°17'28.53" E elev 25 m eye alt 536 m

Graph Min, Avg, Max Elevation: 22, 23, 25 m
Range Totals: Distance: 106 m Elev Gain/Loss: 5.85 m -1.97 m Max Slope: -.93.7% Avg Slope: -.89.7%



Tour Guide 7.5 m 15 m 22.5 m 30 m 37.5 m 45 m 52.5 m 60 m 67.5 m 75 m 82.5 m 90 m 97.5 m 106 m 0.0%

INDUSTRIAL WAREHOUSE

VIKING DIESEL & ELECTRICS

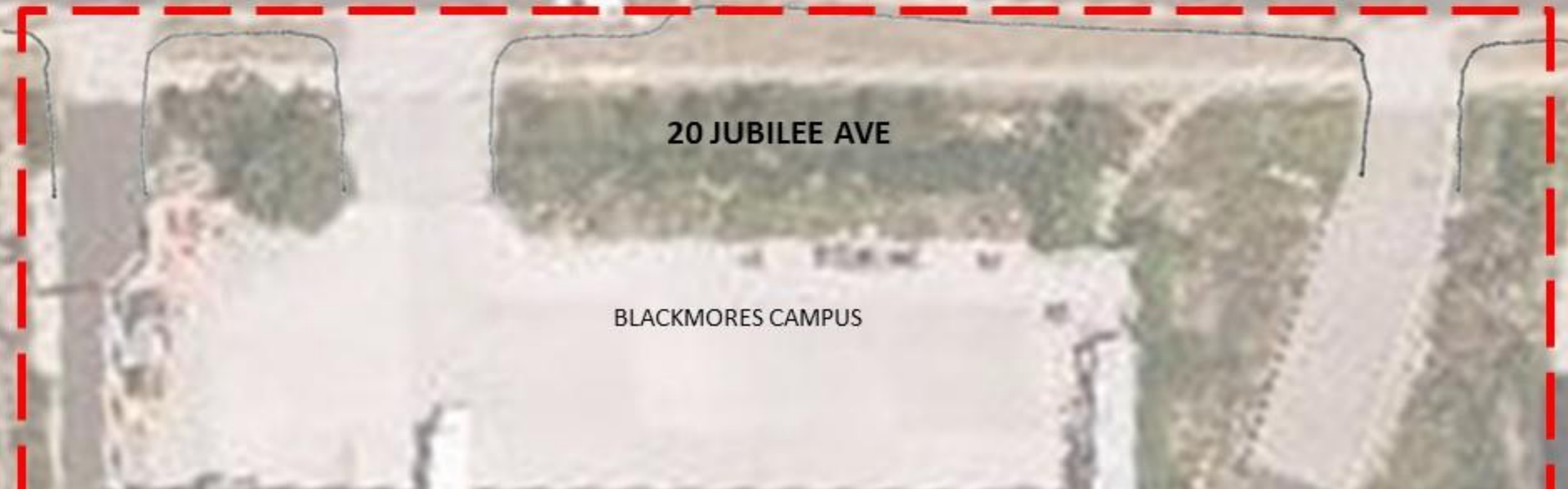
SITE CONTEXT SITE PLAN

WMK



COMMERCIAL & RETAIL

JUBILEE AVENUE

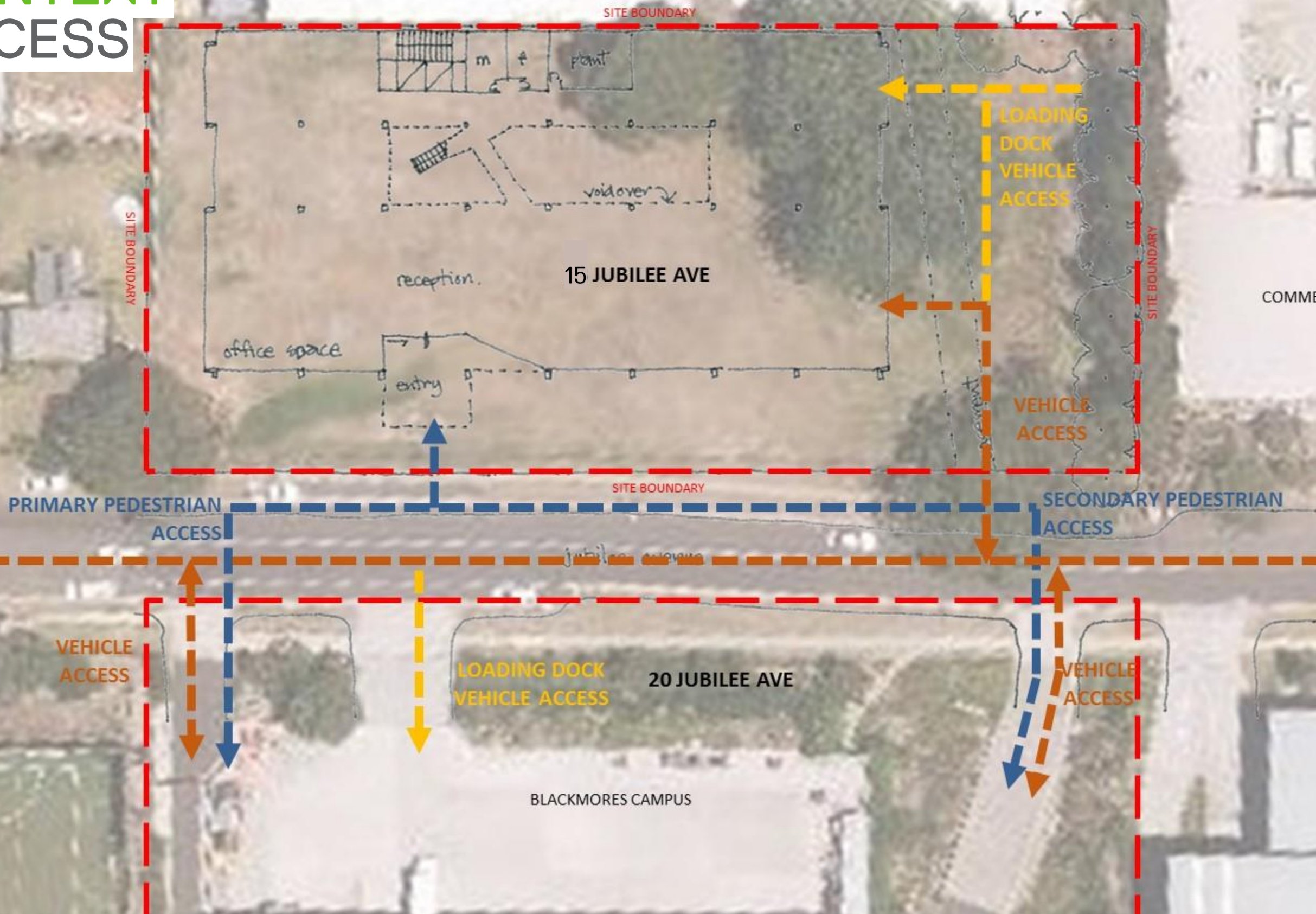


INDUSTRIAL WAREHOUSE

INDUSTRIAL WAREHOUSE

VIKING DIESEL & ELECTRICS

SITE CONTEXT SITE ACCESS

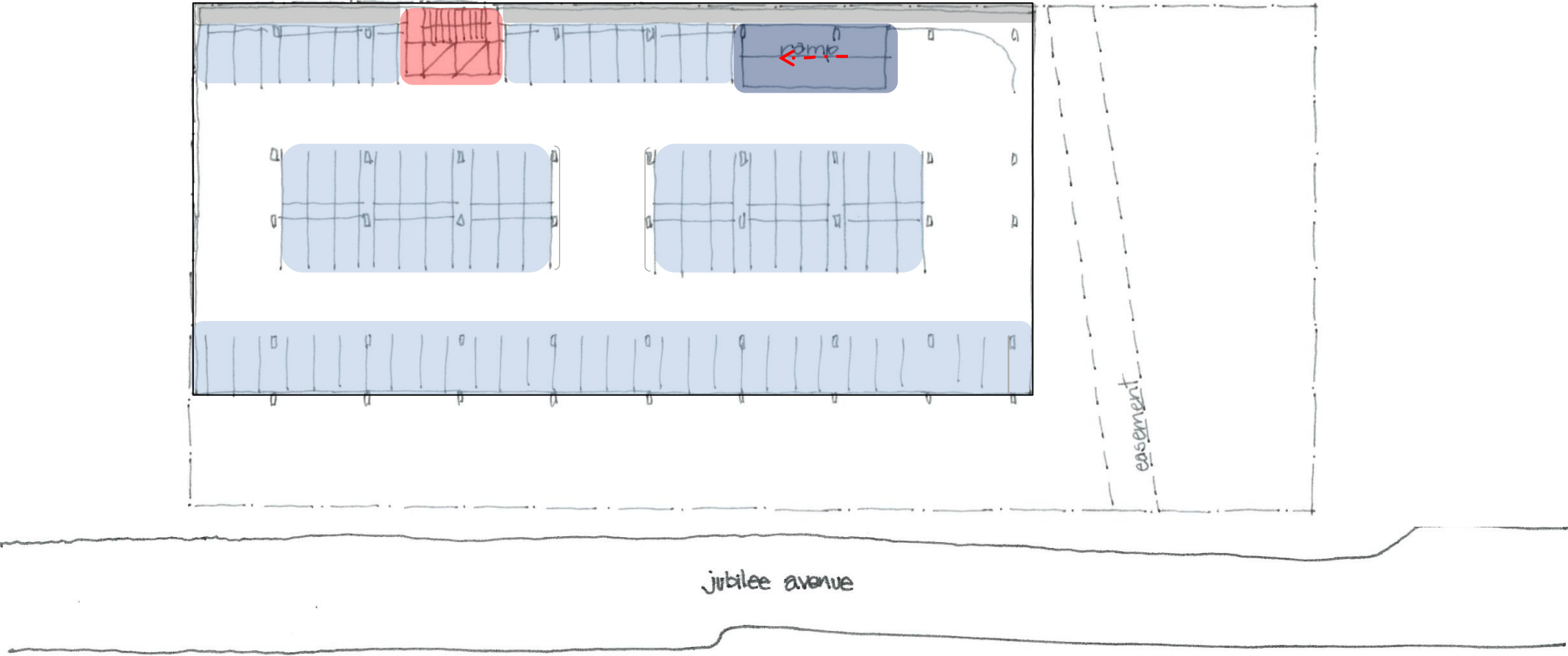


COMMERCIAL & RETAIL

INDUSTRIAL WAREHOUSE

CAMPUS EXTENSION

BASEMENT LEVEL 2 SPATIAL PLAN



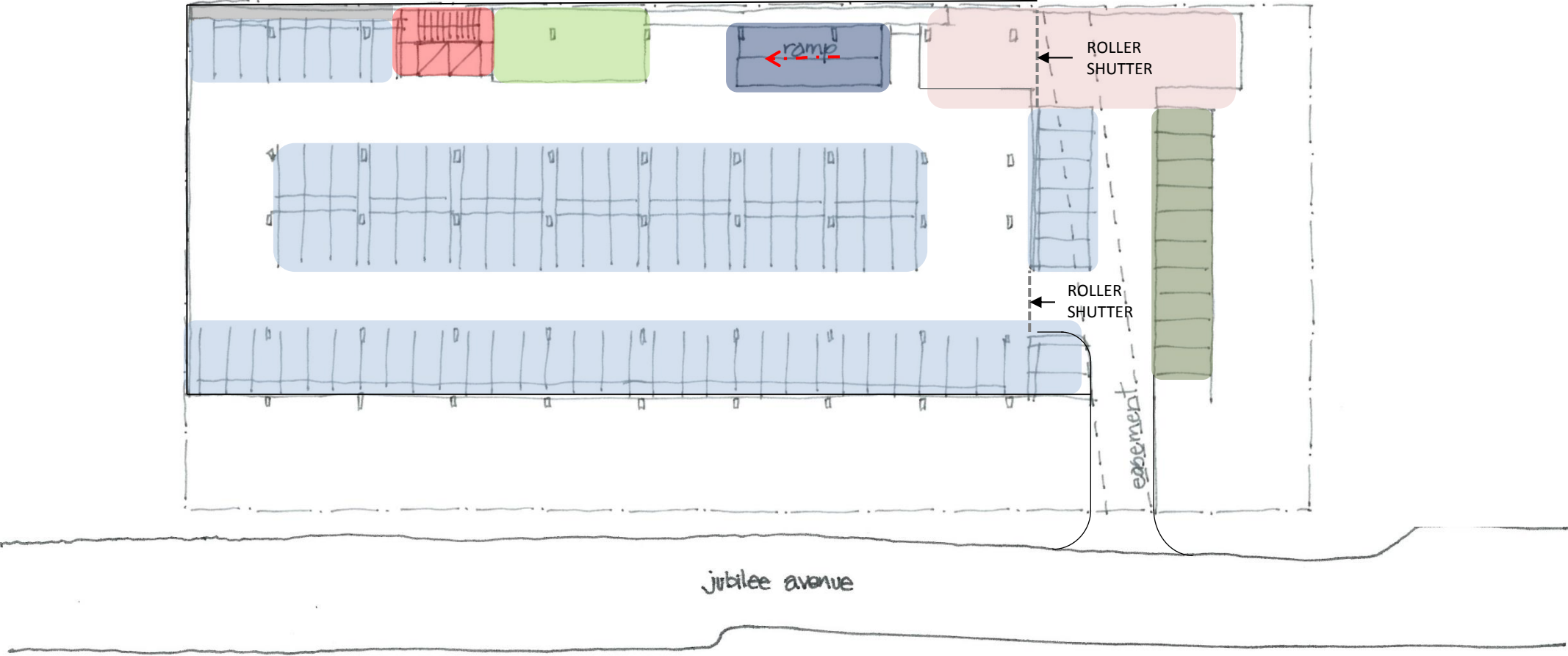
KEY

	CORE		WORKSPACE		WELLNESS		VISITOR CARPARK
	AMENITIES		TRAINING AREA		COLLABORATION ZONES		EOT
	PLANT		LIBRARY		RAMP		LOADING DOCK + BAY
	RECEPTION		CAFE		CARPARK		



CAMPUS EXTENSION

BASEMENT LEVEL 1 SPATIAL PLAN

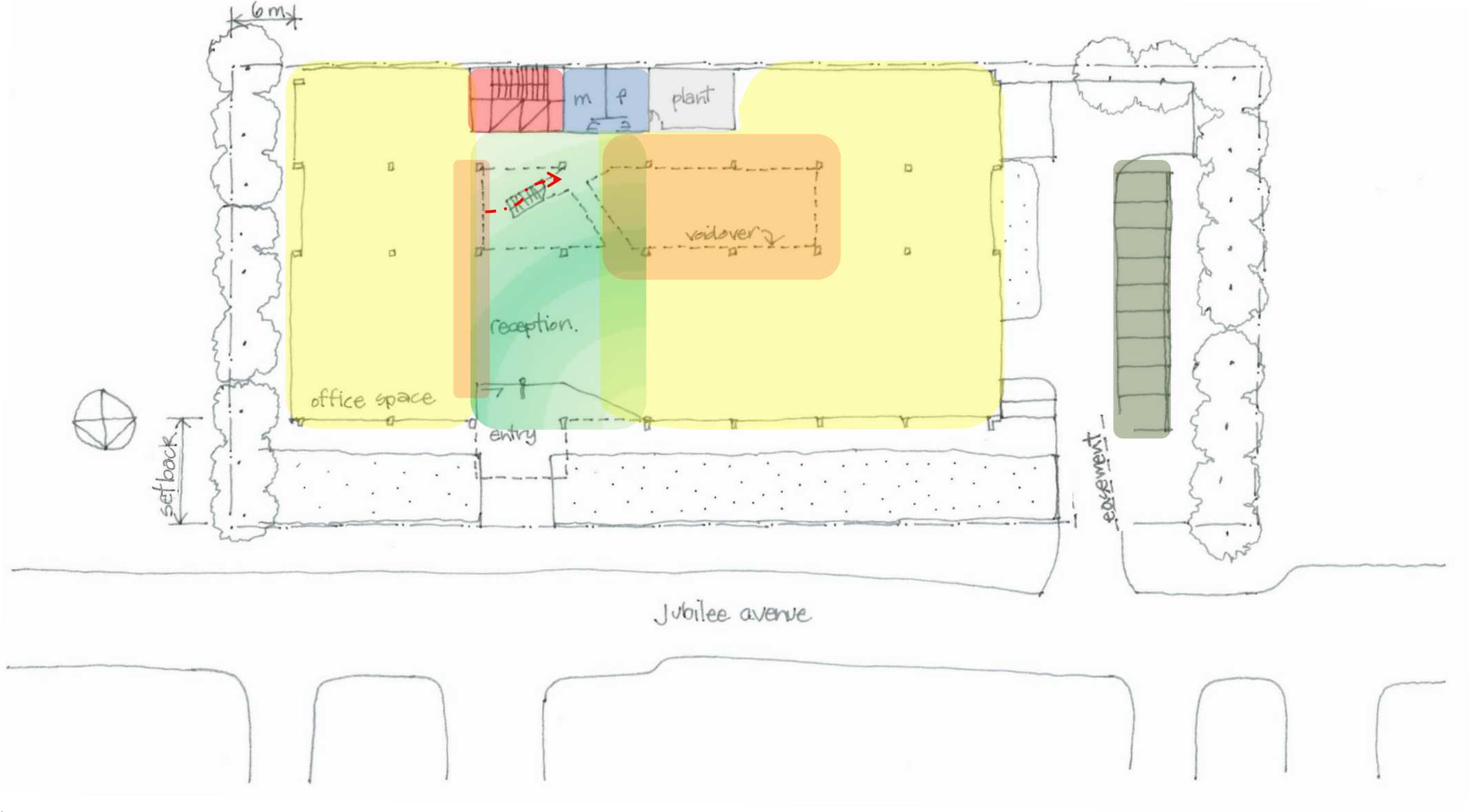


KEY

	CORE		WORKSPACE		WELLNESS		VISITOR CARPARK
	AMENITIES		TRAINING AREA		COLLABORATION ZONES		EOT
	PLANT		LIBRARY		RAMP		LOADING DOCK + BAY
	RECEPTION		CAFE		CARPARK		

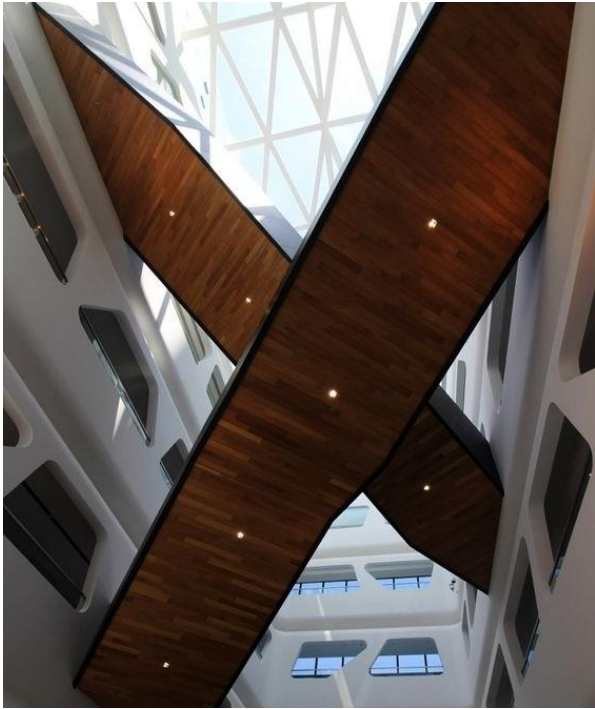


CAMPUS EXTENSION GROUND FLOOR SPATIAL PLAN

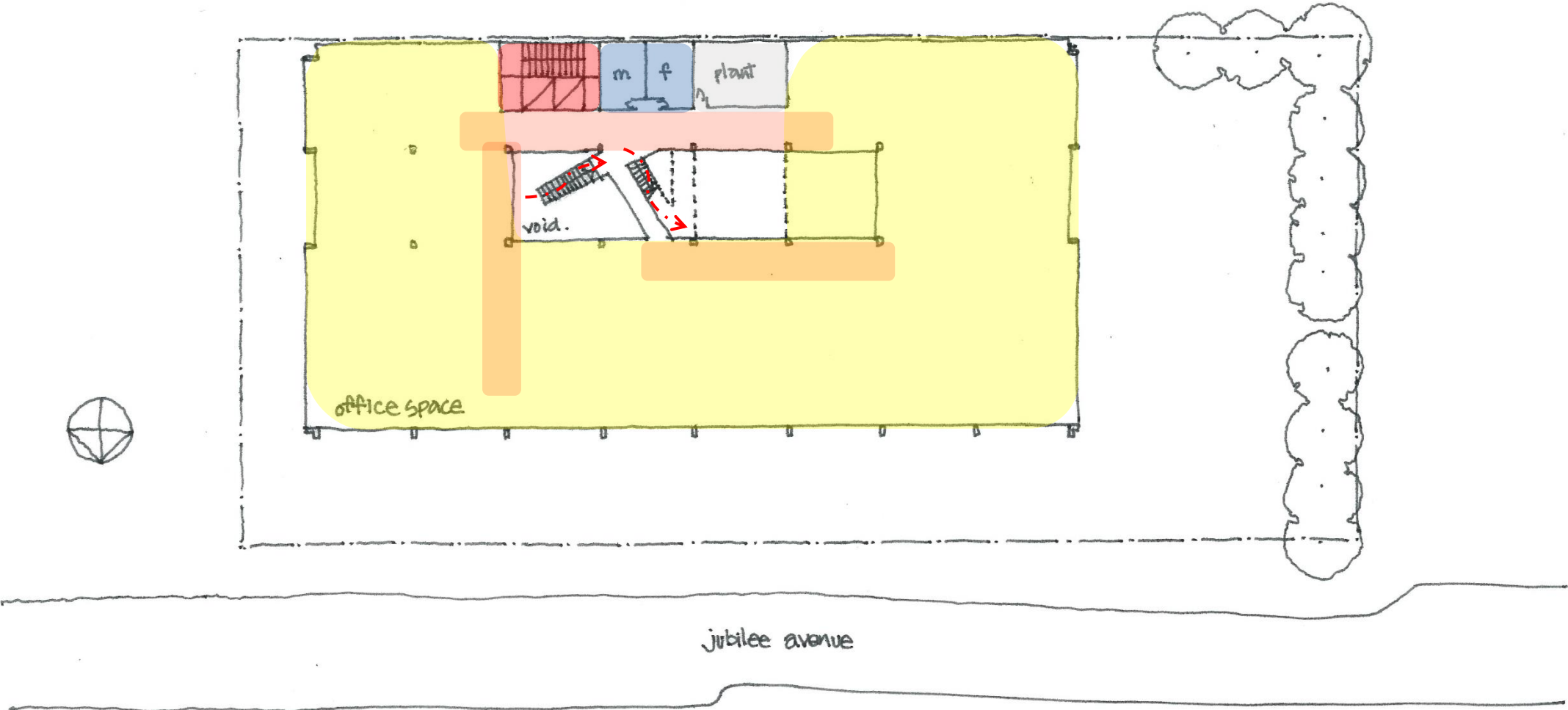


KEY

	CORE		WORKSPACE		WELLNESS		VISITOR CARPARK
	AMENITIES		TRAINING AREA		COLLABORATION ZONES		EOT
	PLANT		LIBRARY		RAMP		LOADING DOCK + BAY
	RECEPTION		CAFE		CARPARK		

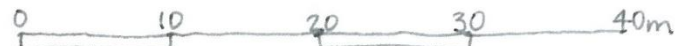


CAMPUS EXTENSION LEVEL 1 SPATIAL PLAN

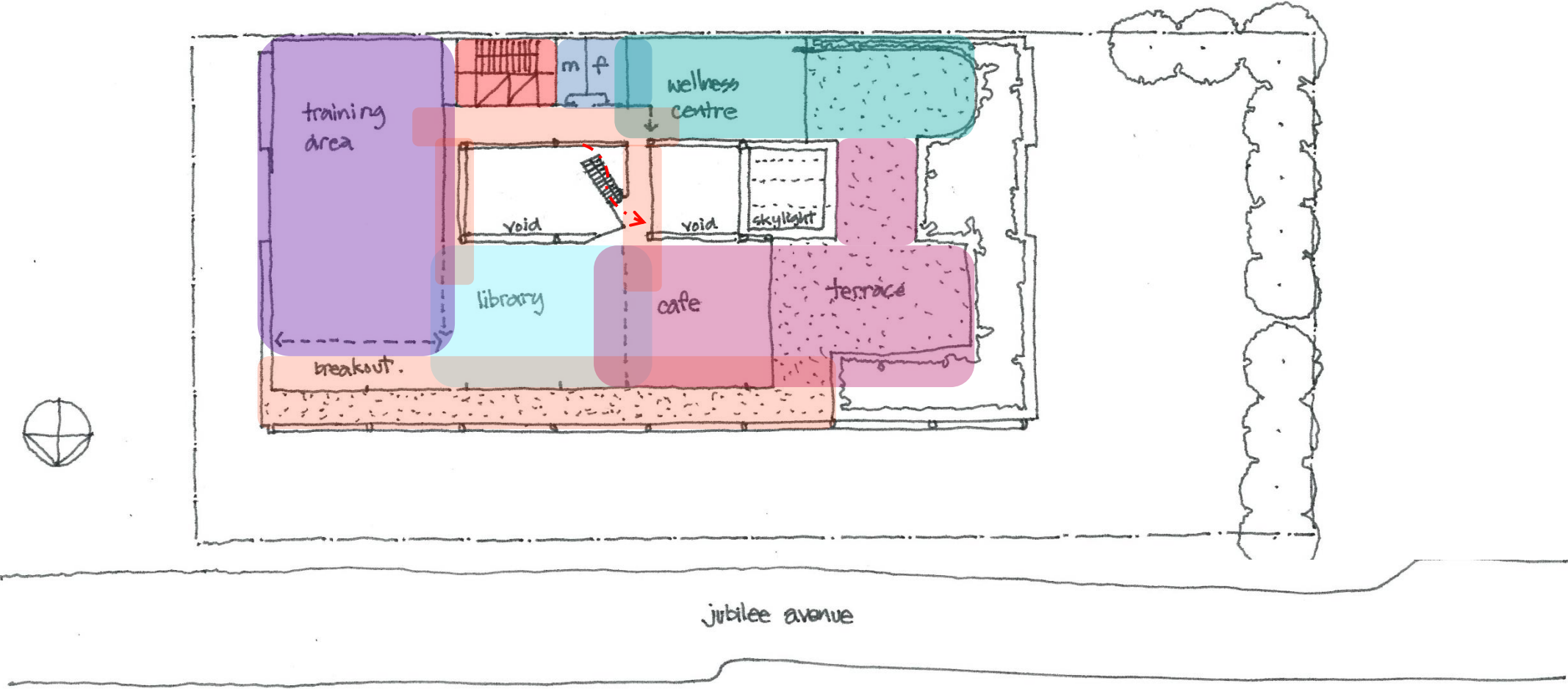


KEY

	CORE		WORKSPACE		WELLNESS		VISITOR CARPARK
	AMENITIES		TRAINING AREA		COLLABORATION ZONES		EOT
	PLANT		LIBRARY		RAMP		LOADING DOCK
	RECEPTION		CAFE		CARPARK		



CAMPUS EXTENSION LEVEL 2 SPATIAL PLAN



KEY

	CORE		WORKSPACE		WELLNESS		VISITOR CARPARK
	AMENITIES		TRAINING AREA		COLLABORATION ZONES		EOT
	PLANT		LIBRARY		RAMP		LOADING DOCK
	RECEPTION		CAFE		CARPARK		



CAMPUS EXTENSION SECTION

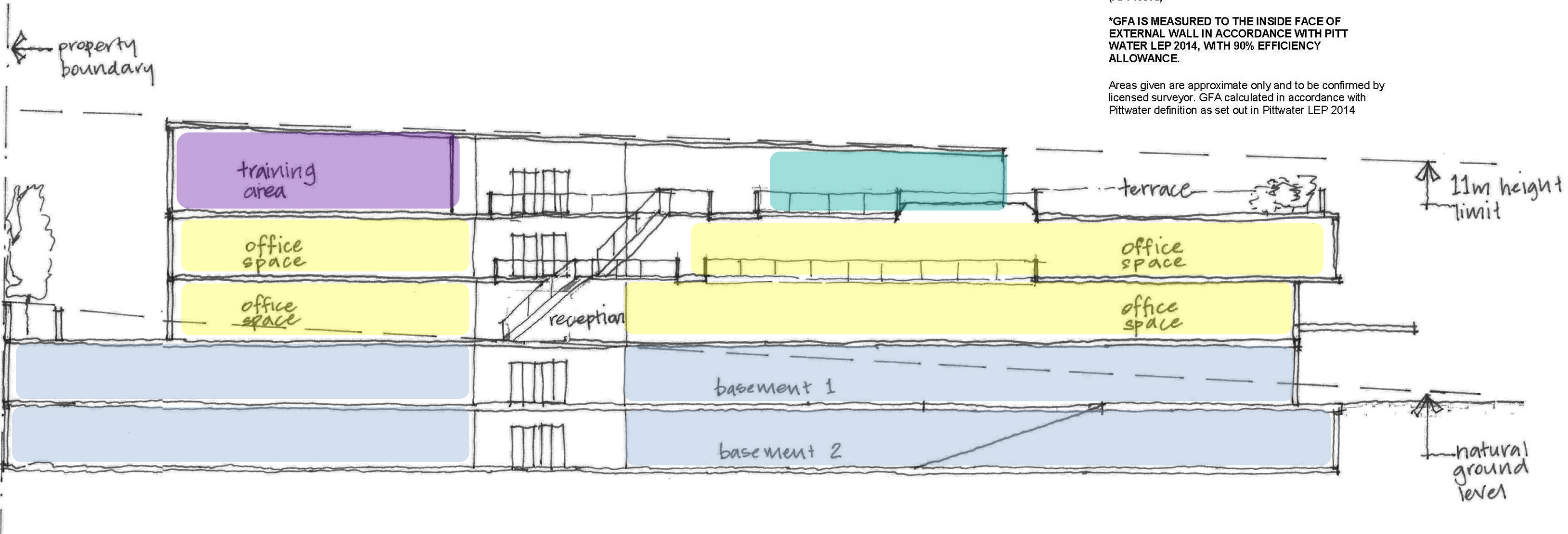
AREA SUMMARY [GBA]	
OFFICE & MEETING	3,580m ²
AMENITIES	180m ²
CIRCULATION	200m ²
TRAINING AREA	500m ²
CAFE	150m ²
LIBRARY	200m ²
WELLNESS CENTRE	250m ²
SITE AREA	4555m ²
TOTAL GBA	5060m ²
TOTAL GFA*	4554m ²
FSR	1:1
APPROX. CAR SPACES	160
note: areas are approximate	



POTENTIAL OFFICE OCCUPATION WITH 15m² NET FLOOR AREA ALLOWANCE PER PERSON = 200 (APPROX.)

*GFA IS MEASURED TO THE INSIDE FACE OF EXTERNAL WALL IN ACCORDANCE WITH PITT WATER LEP 2014, WITH 90% EFFICIENCY ALLOWANCE.

Areas given are approximate only and to be confirmed by licensed surveyor. GFA calculated in accordance with Pittwater definition as set out in Pittwater LEP 2014



KEY

	CORE		WORKSPACE		WELLNESS		VISITOR CARPARK
	AMENITIES		TRAINING AREA		COLLABORATION ZONES		EOT
	PLANT		LIBRARY		RAMP		LOADING DOCK
	RECEPTION		CAFE		CARPARK		

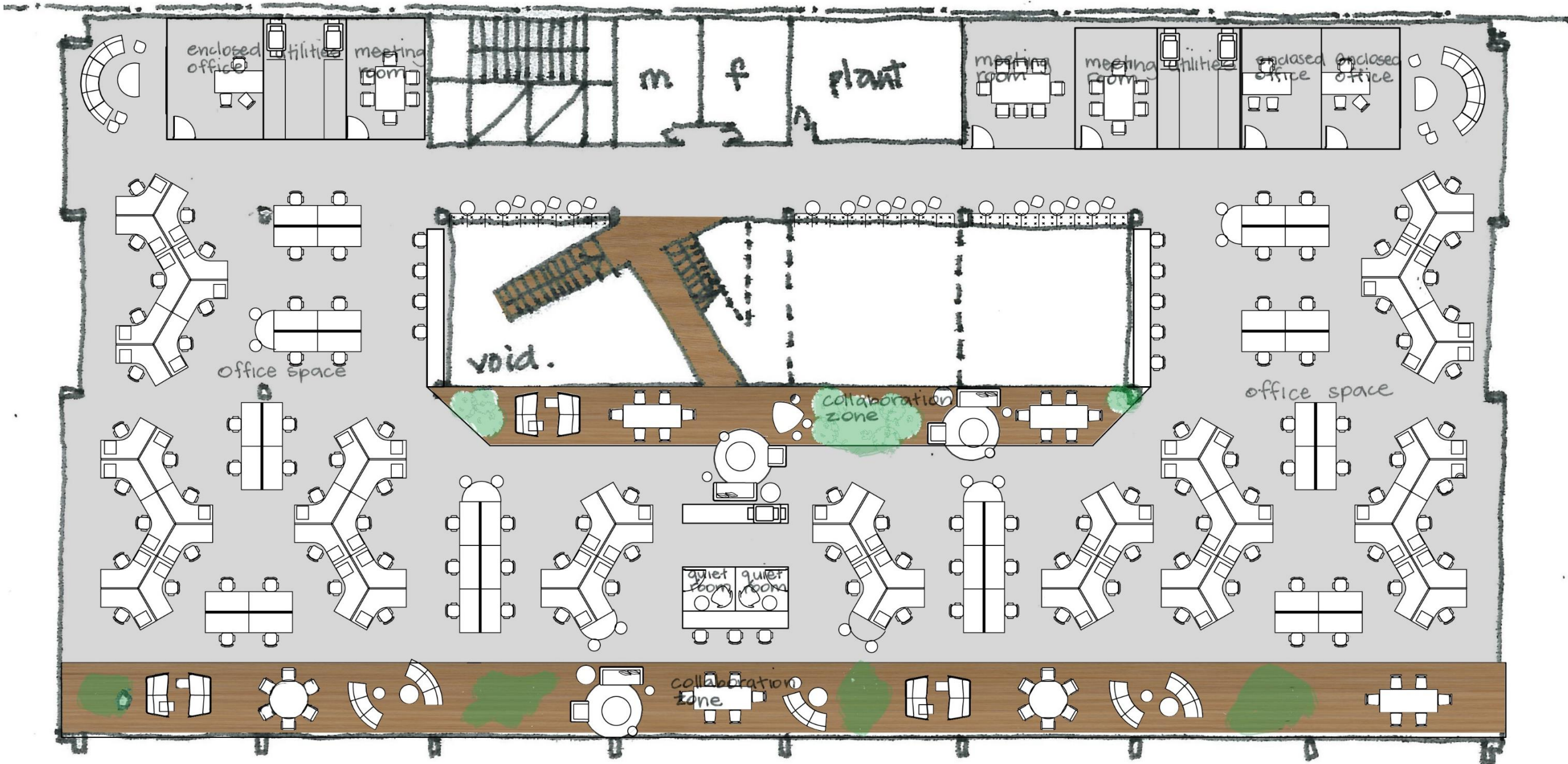


CAMPUS EXTENSION

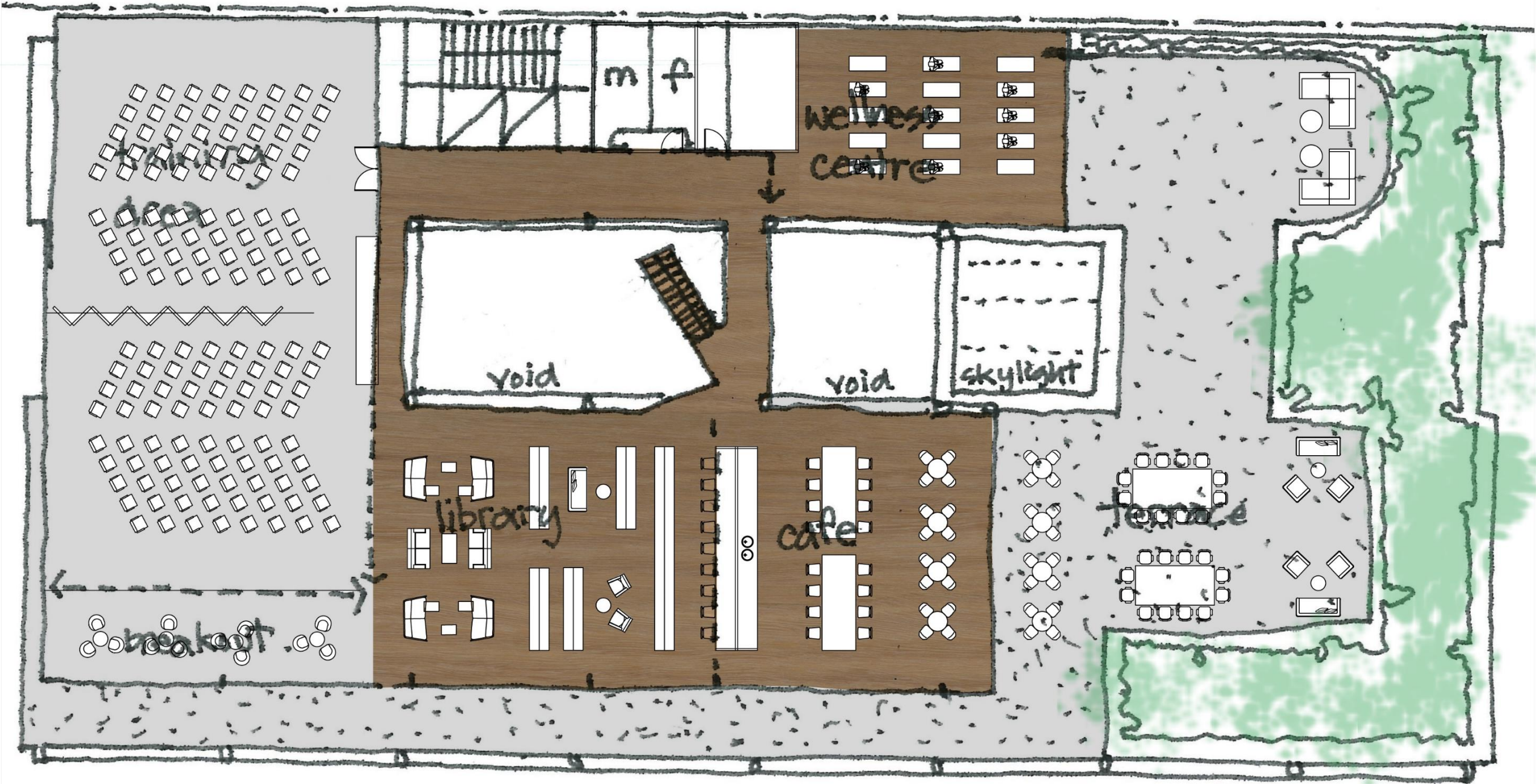
GROUND FLOOR LAYOUT PLAN



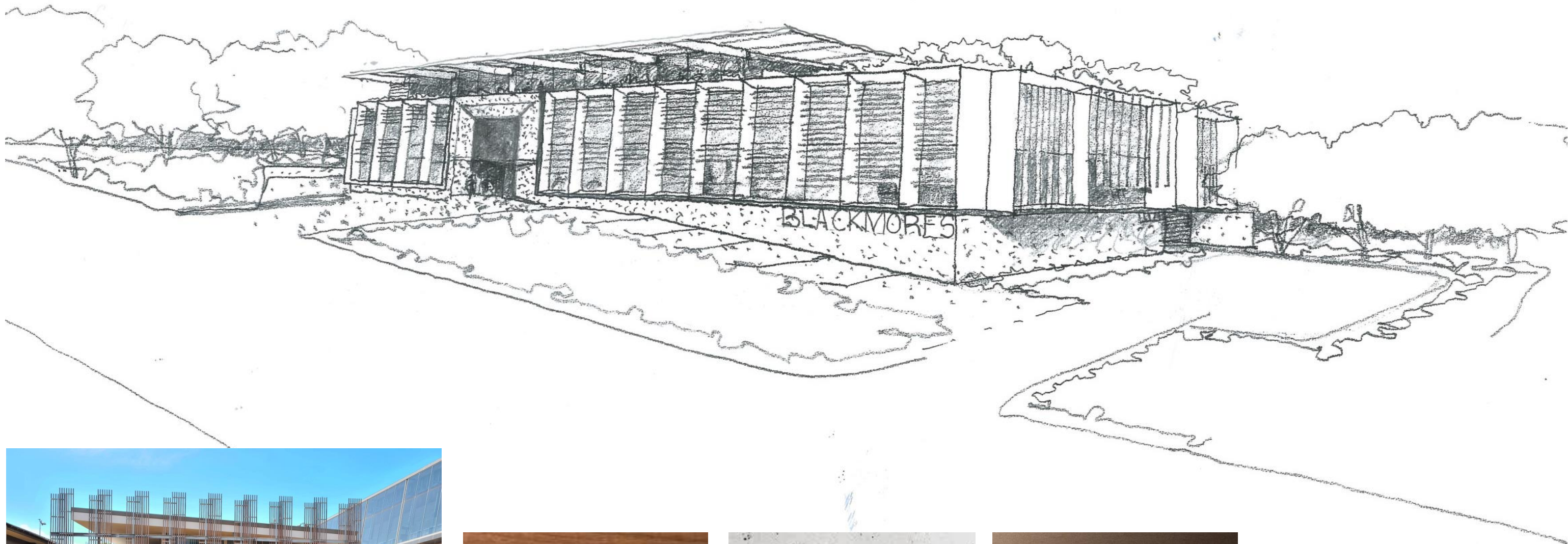
CAMPUS EXTENSION LEVEL 1 LAYOUT PLAN



CAMPUS EXTENSION LEVEL 2 LAYOUT PLAN



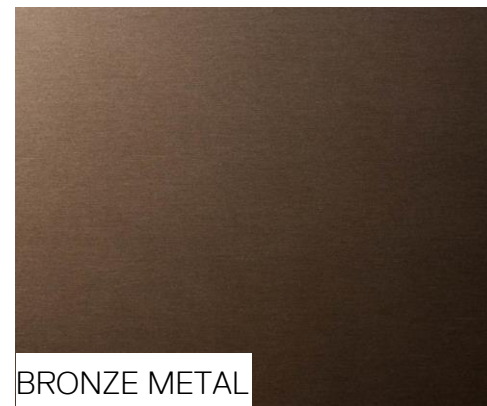
CAMPUS EXTENSION SKETCH PERSPECTIVE



TIMBER



CONCRETE



BRONZE METAL

wmkarchitecture.com
ABN 25 082 956 929

WMK Sydney
L1 346-348 Kent Street
Sydney NSW 2000
Telephone 02 9299 0401

WMK Melbourne
L1 263 Little Bourke Street
Melbourne Vic 3000
Telephone 03 9999 1610

WMK Brisbane
L1 129 Margaret Street
Brisbane QLD 4000
Telephone 07 3177 1067

