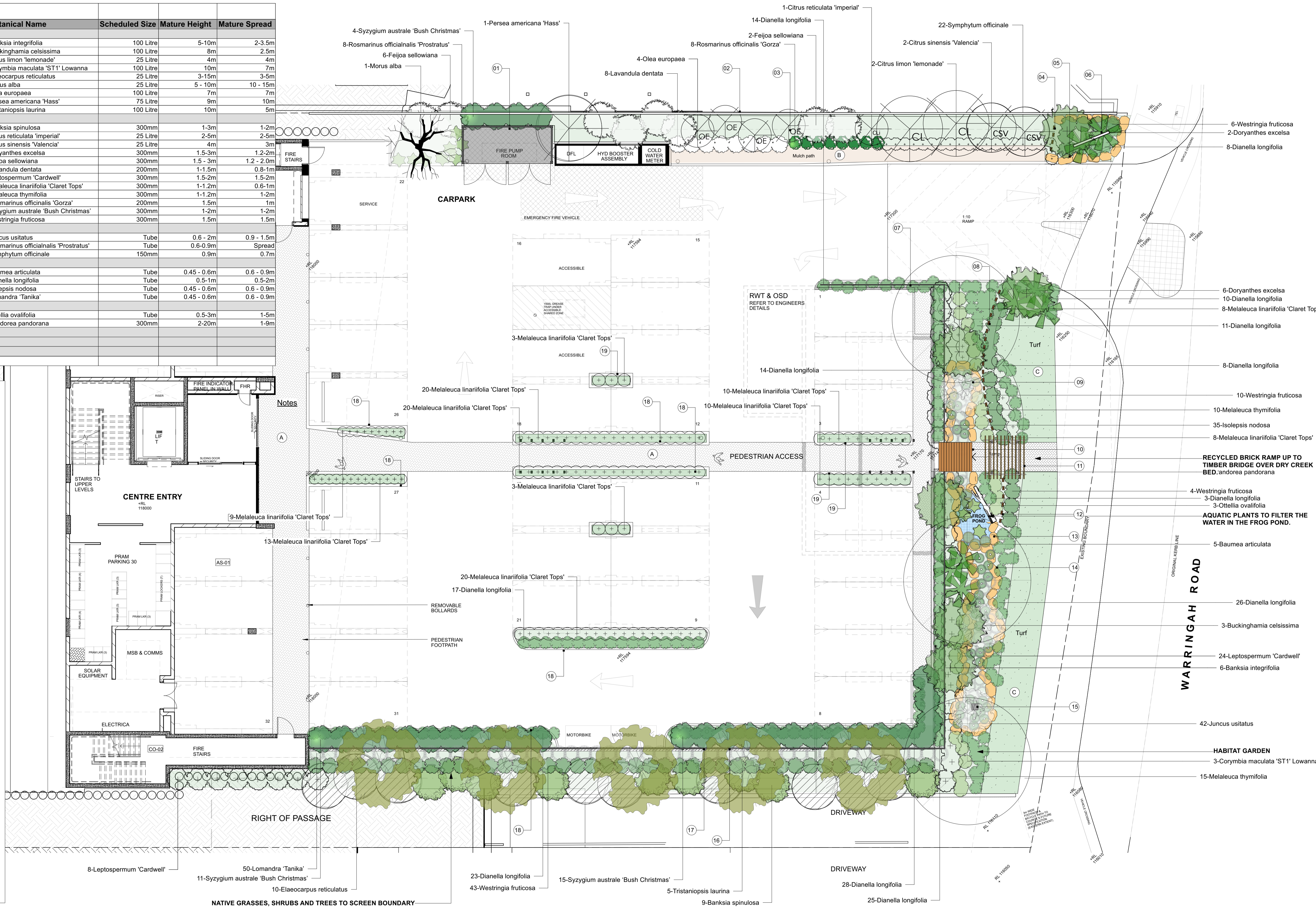


Image	ID	Qty	Common Name	Botanical Name	Scheduled Size	Mature Height	Mature Spread
Trees							
BI	6	Coastal Banksia	Banksia integrifolia	100 Litre	5-10m	2-3.5m	
BC	3	Ivory Curl	Buckinghamia celsissima	100 Litre	8m	2.5m	
CLL	2	Lemonade Lemon	Citrus limon 'lemonade'	25 Litre	4m	4m	
CM	3	Compact Spotted Gum	Corymbia maculata 'ST1' Lowanna	100 Litre	10m	7m	
ER	10	Blue Berry Ash	Elaeocarpus reticulatus	25 Litre	3-15m	3-5m	
MLBRY	1	White Mulberry	Morus alba	25 Litre	5 - 10m	10 - 15m	
OLE	4	European Olive	Olea europaea	100 Litre	7m	7m	
PER	1	Avocado	Persea americana 'Hass'	75 Litre	9m	10m	
TI	5	Water Gum	Tristaniopsis laurina	100 Litre	10m	5m	
Shrubs							
BSP	9	Hairpin Banksia	Banksia spinulosa	300mm	1-3m	1-2m	
CRI	1	Dwarf Imperial Mandarin	Citrus reticulata 'imperial'	25 Litre	2-5m	2-5m	
CSV	2	Valencia Orange	Citrus sinensis 'Valencia'	25 Litre	4m	3m	
DORYE	8	Gynea Lily, Giant Lily	Doryanthes excelsa	300mm	1.5-3m	1.2-2m	
FEIJ	8	Pineapple Guava	Feijoa sellowiana	300mm	1.5 - 3m	1.2 - 2.0m	
LAV	8	French Lavender	Lavandula dentata	200mm	1-1.5m	0.8-1m	
Lc	32	Tea Tree	Leptospermum 'Cardwell'	300mm	1.5-2m	1.5-2m	
MC	124	Honey Myrtle	Melaleuca linariifolia 'Claret Tops'	300mm	1-1.2m	0.6-1m	
Mt	25	Thyme Honey-myrtle	Melaleuca thymifolia	300mm	1-1.2m	1-2m	
RG	8	Rosemary Gorza	Rosmarinus officinalis 'Gorza'	200mm	1.5m	1m	
SZXM	30	Bush Christmas	Syzygium australe 'Bush Christmas'	300mm	1-2m	1-2m	
WSTF	63	Coastal Rosemary	Westringia fruticosa	300mm	1.5m	1.5m	
Ground Covers							
Ju	42	Common Rush	Juncus usitatus	Tube	0.6 - 2m	0.9 - 1.5m	
ROP	8	Creeping Rosemary	Rosmarinus officinalis 'Prostratus'	Tube	0.6-0.9m	Spread	
So	22	Comfrey	Symphytum officinale	150mm	0.9m	0.7m	
Grasses							
Ba	5	Jointed Rush	Baumea articulata	Tube	0.45 - 0.6m	0.6 - 0.9m	
DL	187	Blue flax lily	Dianella longifolia	Tube	0.5-1m	0.5-2m	
Fn	35	Knobby Club Rush	Isolepis nodosa	Tube	0.45 - 0.6m	0.6 - 0.9m	
LLT	50	Spiny-headed mat rush	Lomandra 'Tanika'	Tube	0.45 - 0.6m	0.6 - 0.9m	
Climbers							
Oo	3	Swamp Lilly	Ottelia ovalifolia	Tube	0.5-3m	1-5m	
PP	4	Wong Wonga Vine	Pandorea pandorana	300mm	2-20m	1-9m	
Aquatic Plants							
Perennials							
Ferns							
Total	709						

- KEY:**
- Elements**
- Enclosure to fire pump room - black pool fencing with hardwood posts and skillion roof with corrugated sheet. Roof to fall back towards fence line (by others)
 - Lap and cap timber fence to western boundary (by others)
 - Fruit trees planted along western boundary
 - Vertical sleeper screen. 200x75mm mixed species sawn hardwood H4 in ground. Individual posts installed vertically in concrete strip footing and cut to varying heights between 900-1800H above ground level (refer to elevation on plan)
 - Sandstone boulder retaining wall beneath signage 400H (use sandstone from site where possible)
 - Orchard signage (by others)
 - Black pool fence with hardwood posts to front boundary (1.2m high)
 - Vertical sleeper screen. 200x75mm mixed species sawn hardwood H4 in ground. Individual posts installed vertically in concrete strip footing and cut to varying heights between 900-1800H above ground level (refer to elevation on plan)
 - Rain garden including sandstone boulder edge, sandstone spalls and drainage (use sandstone from site where possible)
 - Timber bridge over rain garden creek bed (Ironbark wharf timber 136x32)
 - Timber trellis with laser cut corten steel sign attached to the front. Vines trained to timber trellis
 - Vertical sleeper screen. 200x75mm mixed species sawn hardwood H4 in ground. Individual posts installed vertically in concrete strip footing and cut to varying heights between 900-1800H above ground level (refer to elevation on plan)
 - Rain garden including sandstone boulder edge, Class 1 Australian hardwood log, mesh screen, pond liner and pebbles to base
 - Rain garden including sandstone boulder edge, sandstone spalls and drainage (use sandstone from site where possible)
 - Overflow drainage pit at the end of the rain garden
 - Black pool fence with hardwood posts to Eastern boundary. Fixed to top of retaining wall (1.2m high)
 - Retaining wall (by others)
 - 100mm concrete kerb (by others)
 - Concrete kerb 300mm above OSD (by others)
- Surfacing**
- Recycled brick paving (herringbone pattern)
 - Mulch path
 - Natural turf to nature strip
 - Provide 700mm deep tree pit with adequate drainage and permeable paving (by others) DELETED



ORCHARD EARLY LEARNING CENTRE, FORESTVILLE

Concept and Landscape Plan
31st January 2022



Scale 1:100 @ A1
Scale bar: 0 1 2 3 5 10



VERTICAL SLEEPER SCREEN ELEVATION
1:25



Recycled brick Paving



Indicative image of corten steel signage to timber trellis

ORCHARD EARLY LEARNING CENTRE, FORESTVILLE

Elevation Drawing
31st January 2022