

Tom Dunsford
Utz Sanby
tom@utzsanby.com

16 January 2024

Re: Navigation assessment for previously approved boatshed including deck, landing steps and installation of four new pillars at 214 Hudson Parade Clareville Lot 41 DP13760
Changes include celestory 'pop up' roof entirely behind MHW, removal of existing slip way rails.

Dear Tom Dunsford

I refer to your email to Transport for NSW Maritime dated 15 December 2023 regarding assessment of the above proposal.

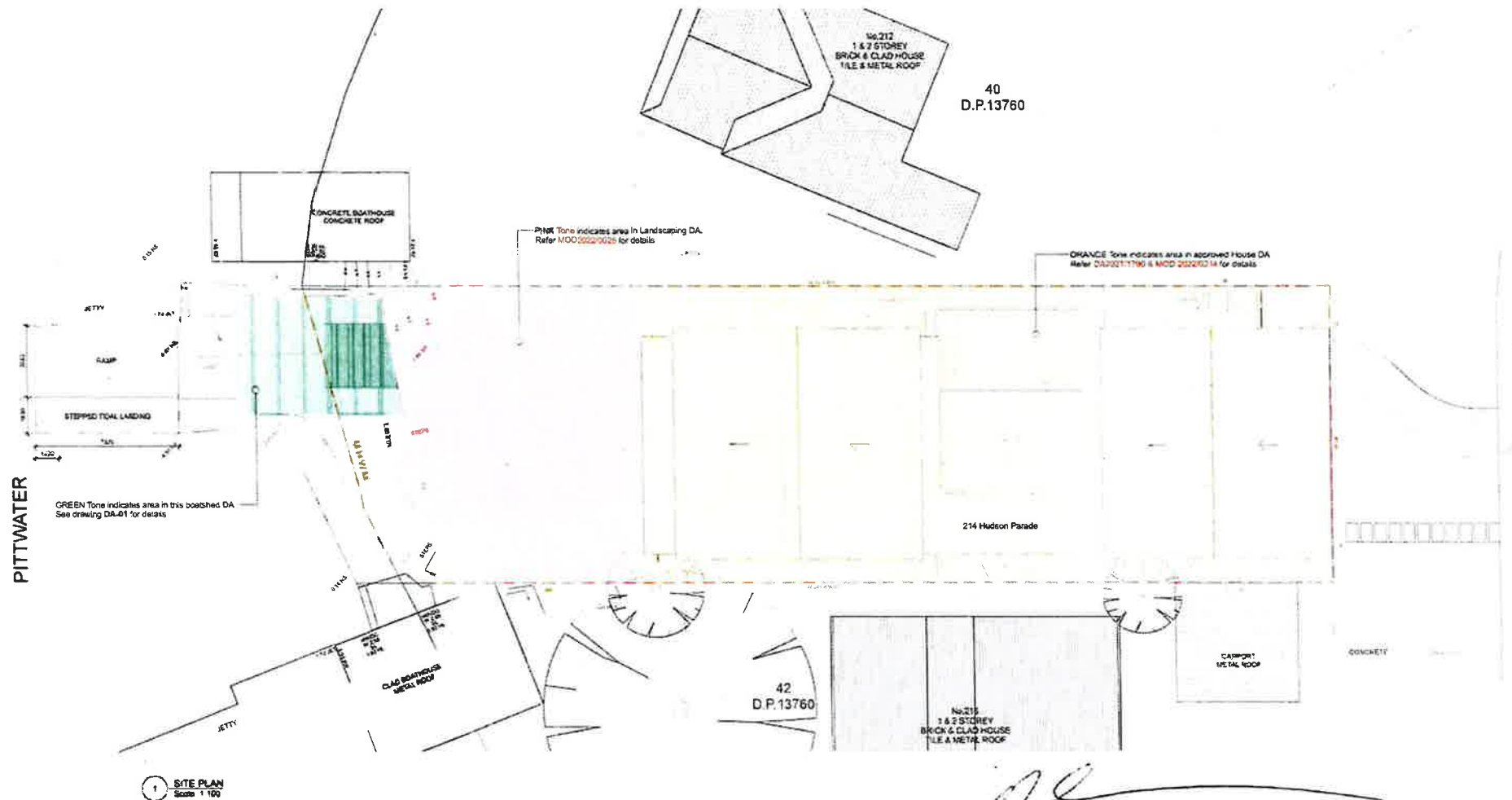
We advise that an inspection/assessment has been conducted by the local Boating Safety Officer and there are no navigational concerns regarding the designated proposal.

Sincerely,

A handwritten signature in black ink, appearing to read "Drew Jones".

Drew Jones
Manager Waterways Operations
Hawkesbury River Broken Bay
Transport for NSW
Greater Sydney Maritime

OFFICIAL



<div> <div></div> <div></div> <div></div> </div>	<div> <div></div> <div></div> <div></div> </div>	<div> <div></div> <div></div> <div></div> </div>	<div> <div></div> <div></div> <div></div> </div>	<div> <div></div> <div></div> <div></div> </div>
<div> <div></div> <div></div> <div></div> </div>	<div> <div></div> <div></div> <div></div> </div>	<div> <div></div> <div></div> <div></div> </div>	<div> <div></div> <div></div> <div></div> </div>	<div> <div></div> <div></div> <div></div> </div>