

LANDSCAPE PLAN (AMENDED 29.7.20)
 new garage level
 SCALE 1:100 @ A1

LEGEND

	PROPOSED LEVELS		SITE BOUNDARY		EXISTING TREES TO BE REMOVED		EXISTING SHRUBS TO BE RETAINED		NEW STONE PAVING
	EXISTING SPOT LEVELS		NEW CONCRETE DRIVEWAY		EXISTING TREES TO BE RETAINED ON SITE		EXISTING STONE GARDEN WALLS		REVISION AT AMENDMENTS 29.7.20

COMPLIANCE TABLE

FITWATER 21 DCP C.1.1 LANDSCAPING
 MINIMUM TREES REQUIRED: 2 FRONT and 1 REAR

EXISTING TREES RETAINED: SOUTH SIDE: 1 BANKSIA INTEGRIFOLIA, BACK: 1 BANKSIA INTEGRIFOLIA

NEW TREE: FRONT: 1 BANKSIA INTEGRIFOLIA, COMPLIES

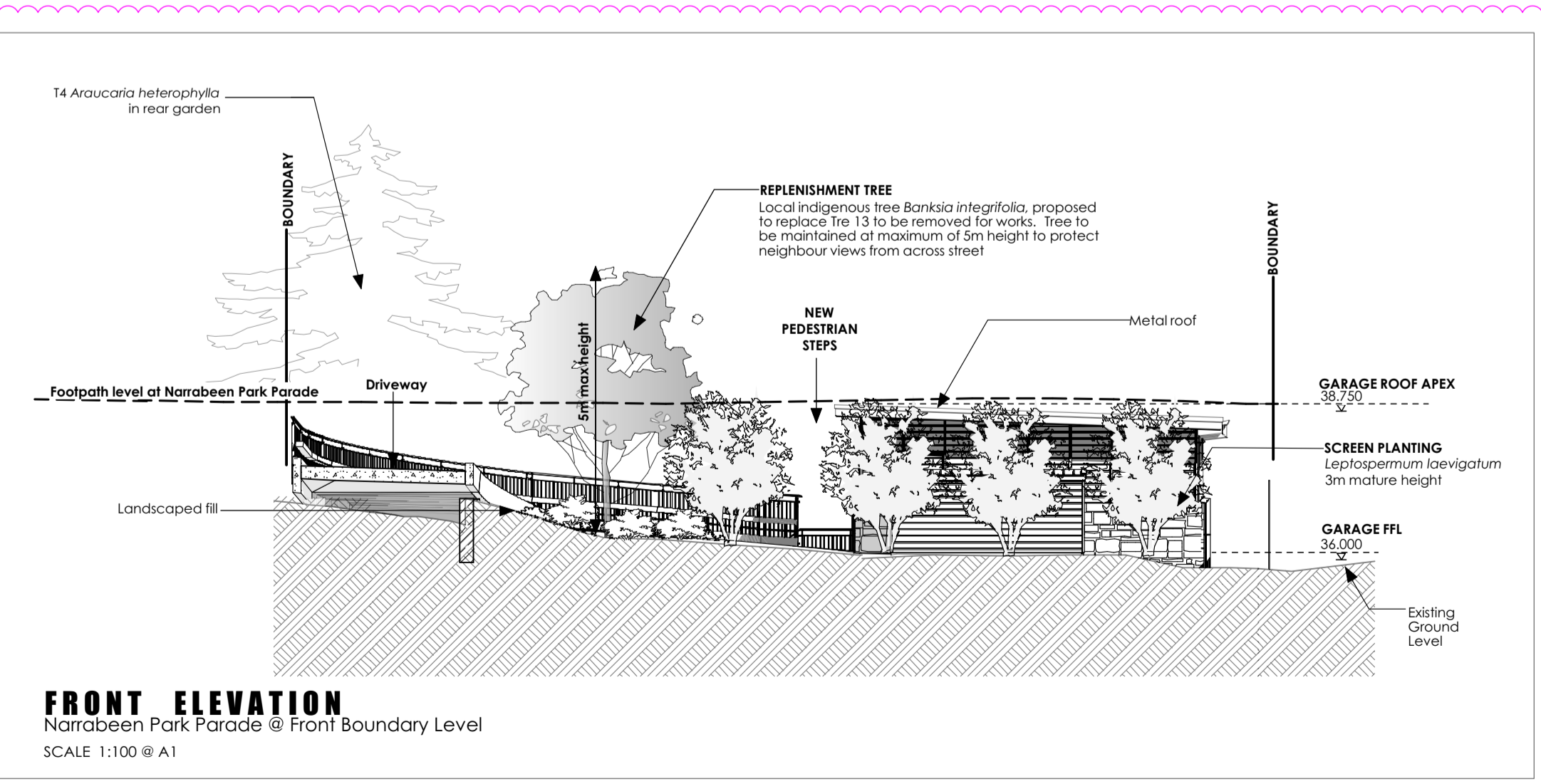
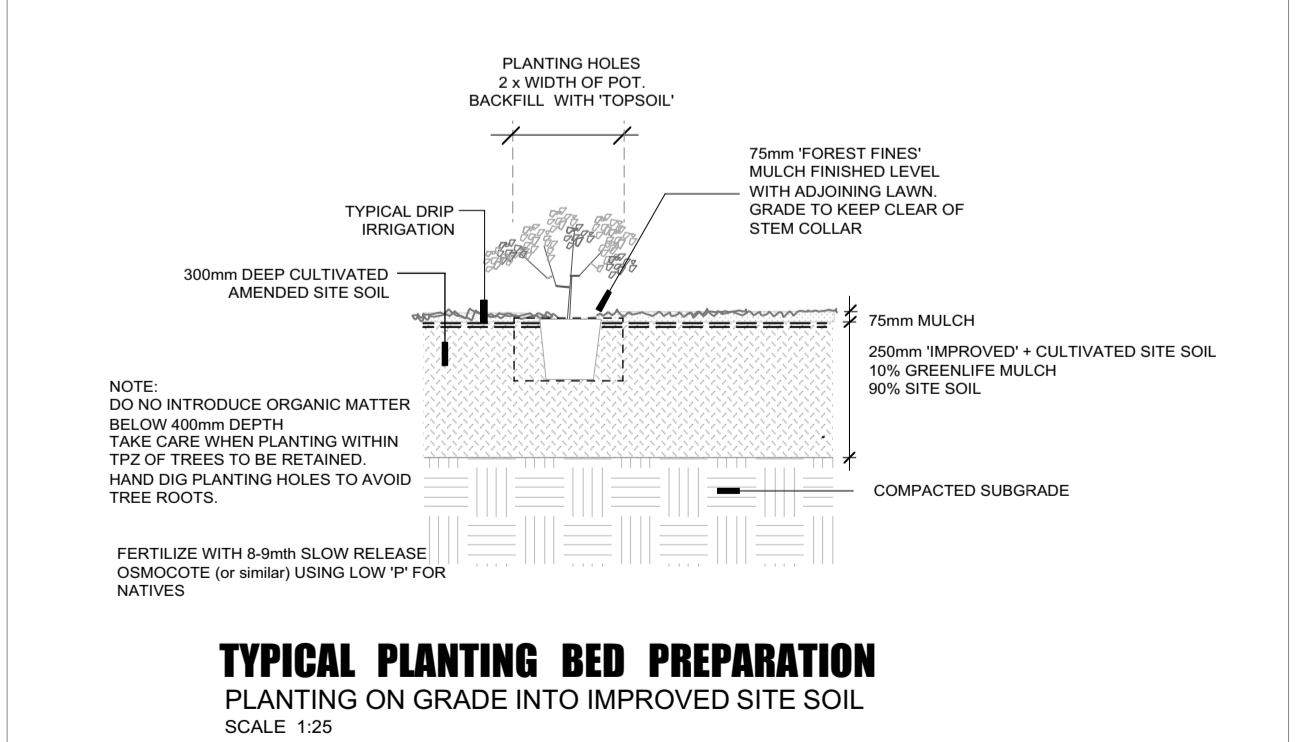
LOCAL UNDERSTOREY SPECIES PROPOSED: 80%

FITWATER 21 DCP D12.10 LANDSCAPED AREA
 E4 ENVIRONMENTAL LIVING
 SITE AREA: 798.2m²
 MINIMUM LANDSCAPE AREA DCP 21: 479.9m² (49%)

LANDSCAPE AREA PROPOSED: 487.6m² (61%)
 AMENITY AREA: 98.1m² (12.3%)
 (refer to Architectural Plan DA03A (24.7.20) Landscape Area for full details of area calculations)

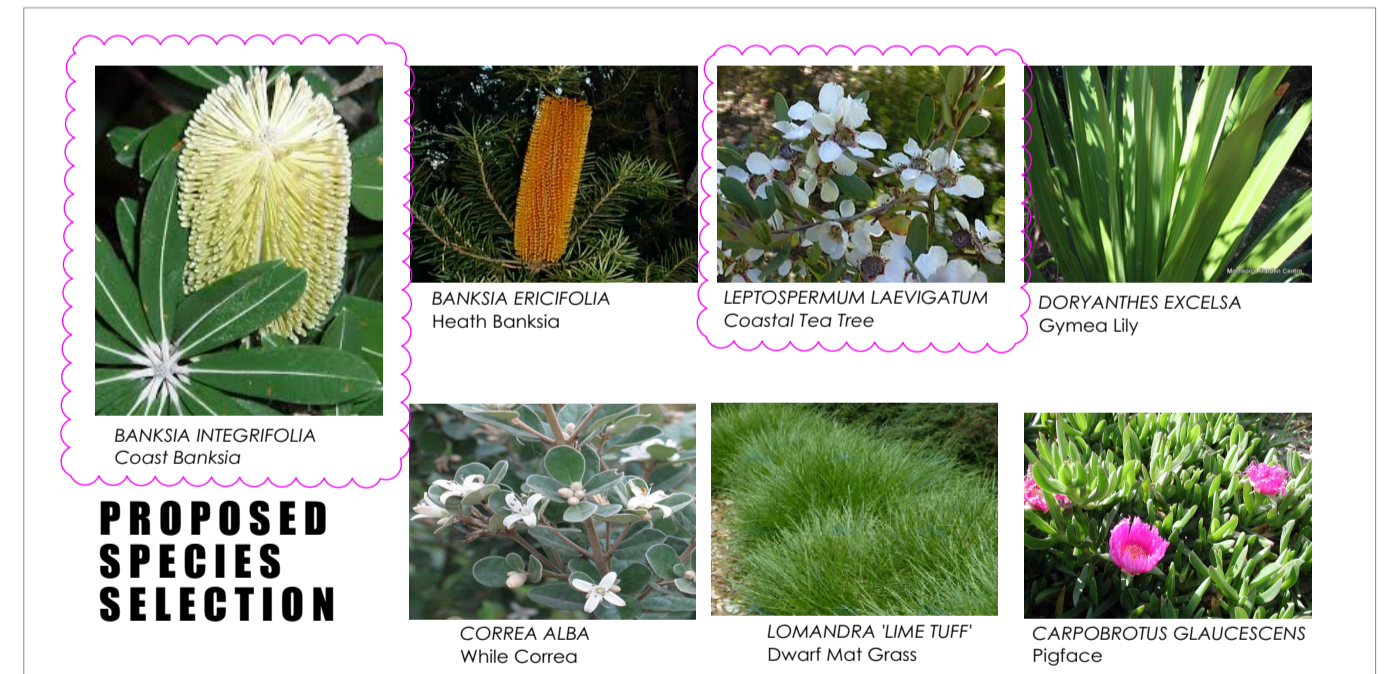
TREE RETENTION SCHEDULE

TREE NO	BOTANICAL NAME	COMMON NAME	DBH	HEIGHT	SPREAD	T.P.Z	S.R.L.Z	STATUS
T1	BANKSIA INTEGRIFOLIA	COASTAL BANKSIA	260mm	6m	5m	3.1m	1.9m	RETAIN + PROTECT
T2	SYZYGIUM AUSTRALE	SCRUB CHERRY	150mm	4m	2.5m	2m	1.5m	RETAIN + PROTECT
T3	BANKSIA INTEGRIFOLIA	COASTAL BANKSIA	250mm	6m	5m	3m	1.8m	RETAIN + PROTECT
T4	ARAUCARIA HETEROPHYLLA	NORFOLK IS PINE	900mm	22m	12m	10.8m	3.2m	RETAIN + PROTECT
T7	CORYLINE AUST. 'PURPUREA'	CABBAGE PALM	300mm	5m	4m	3.6m	2m	RETAIN + PROTECT
T10	BANKSIA INTEGRIFOLIA	COASTAL BANKSIA	800mm	9m	10m	9.6m	3m	RETAIN + PROTECT
T11	ARAUCARIA HETEROPHYLLA	NORFOLK IS. PINE	800mm	9m	10m	9m	10m	REMOVE FOR WORKS
T13	BANKSIA INTEGRIFOLIA	COASTAL BANKSIA	200mm	4m	4m	2.4m	7m	REMOVE FOR WORKS
T14	CALLISTEMON CITRINUS	CRIMSON BOTTLEBRUSH	500mm	5m	6m	6.6m	2.6m	REMOVE FOR WORKS
T15	CALLISTEMON CITRINUS	CRIMSON BOTTLEBRUSH	500mm	4m	4m	6m	2.5m	RETAIN + PROTECT
T16	BANKSIA SERRATA	OLD MAN BANKSIA	150mm	3m	5m	2m	1.5m	RETAIN + PROTECT



LANDSCAPE DESIGN PRINCIPLES

- TO COMPLEMENT AND ENHANCE STREETScape**
 EXISTING SCREEN PLANTING ON ROAD RESERVE AND SITE HAVE BEEN RETAINED TO INTEGRATE THE DEVELOPMENT WITH STREETScape. ADDITIONAL LOCAL AND LOW WATER COASTAL SPECIES HAVE BEEN PROPOSED TO SUPPLEMENT SITE VEGETATION.
- TO REDUCE THE IMPACT OF THE BUILT FORM**
 PROVISION OF LOCALLY INDIGENOUS SCREEN SHRUBS ALONG NORTHERN BOUNDARY DESIGNED TO REDUCE THE IMPACT OF THE BUILT FORM AND PRESENT THE DEVELOPMENT WITH A VEGETATED SETTING. TREE REMOVAL HAS BEEN RESTRICTED TO THREE TREES THAT ARE DIRECTLY IMPACTED BY THE DEVELOPMENT. CONSIDERATION OF EXISTING TREES AND THE RECOMMENDATIONS OF PROJECT ARBORIST HAVE BEEN IMPLEMENTED TO ENSURE RETAINED TREES WILL REMAIN VIABLE AFTER THE DEVELOPMENT.
- TO PROTECT NEIGHBOUR AMENITY + VIEW**
 SCREEN PLANTING HAS BEEN PROVIDED TO PROTECT NEIGHBOUR PRIVACY AND VIEWS.
- TO COMPLY WITH DCP REQUIREMENTS FOR TREE PLANTING**
 2 LOCAL TREE SPECIES ARE TO BE RETAINED ON SITE AND 1 REPLACEMENT LOCAL TREE PROPOSED. LANDSCAPE AREA 8% IN EXCESS OF THE MINIMUM 60% REQUIRED BY DCP CONTROL.
- TO ENHANCE THE LOCAL ECOLOGY**
 INCLUSION OF LOCALLY NATIVE SHRUBS PROPOSED TO PROVIDE HABITAT. ACCESS TO THE SITE FOR FORAGING FAUNA WILL BE RETAINED AND NO NEW FENCING IS PROPOSED.
- TO CONTROL SPREAD OF WEEDS**
 ALL NODIOUS AND ENVIRONMENTAL WEEDS SHALL BE REMOVED FROM SITE AND NO WEED SPECIES ARE PROPOSED TO BE PLANTED.
- TO COMPLY WITH FITWATER 21 DCP + LEP 2014**
 DESIGN PROCESS HAS AIMED TO COMPLY WITH OUTCOMES AND CONTROLS OF LOCAL GOVERNMENT PLANNING INSTRUMENTS IN PARTICULAR R21 DCP CONTROLS



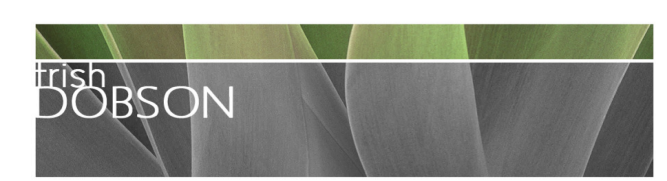
PLANTING SCHEDULE

SPECIES HAVE BEEN SELECTED ON THE BASIS OF SUITABILITY TO SITE CONDITIONS AND LOCAL LANDSCAPE CHARACTER, WITH A PREFERENCE FOR LOW WATER AND LOCALLY INDIGENOUS SPECIES. WHERE AVAILABLE, SUPPLY LOCALLY INDIGENOUS SPECIES GROWN FROM LOCAL PROVENANCE STOCK.

KEY	BOTANICAL NAME	COMMON NAME	HEIGHT	NO	POT SIZE	LOCAL	COMMENTS
TREES + SHRUBS							
BI	BANKSIA INTEGRIFOLIA	COAST BANKSIA	5m	1	200mm	1	LOCAL SPECIES TO REPLACE TREE 13 TO BE REMOVED
BE	BANKSIA ERICIFOLIA	HEATH BANKSIA	3m	4	200mm	4	LOCALLY INDIGENOUS SPECIES
CA	CORREA ALBA	WHITE CORREA	1m	5	200mm	5	LOCALLY INDIGENOUS SPECIES
	DORYANTHES EXCELSA	GYMEA LILY	1.5m	3	200mm		NATIVE SPECIES
LL	LEPTOSPERMUM LAEVIGATUM	COASTAL TEA TREE	3m	4	200mm	4	LOCALLY INDIGENOUS SPECIES
GROUNDCOVERS + GRASSES							
	CARPOBROTUS GLAUCESCENS	PIGFACE	g/cover	12	150mm	12	LOCALLY INDIGENOUS SPECIES
	LOMANDRA 'LIME TUFF'	LIME TUFF MAT RUSH	0.5m	4	150mm		NATIVE SPECIES
TOTAL NUMBER OF PLANTS				33			
NUMBER OF LOCAL SPECIES						24 (81%)	COMPLIES DCP REQUIREMENT

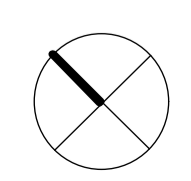
REVISIONS

A	29.7.20	New double garage proposed to replace carport on DA application Trees 13 + 14 proposed for removal to allow for relocation of driveway 1m high front fence proposed on front boundary New screen planting proposed (see Planting Schedule) Compliance table amended: - SRA + Tree Retention
---	---------	---



trish dobson landscape architecture
 5/57 AVALON PARADE, AVALON, NSW 2107
 0488 983020
 trish@trishdobson.com.au
 TRISH DOBSON
 REGISTERED LANDSCAPE ARCHITECT #410 NORTHCOAST 9113
 NSW 57 241 486 158

AMENDED DEVELOPMENT APPLICATION
 NEW CARPORT
 for R & S NICHOLS



AMENDED LANDSCAPE PLAN
 1:100 @ A1 SCALE
 17.12.19 (Rev A) 29.7.20 DATE
 1922 JOB
 1 OF 1 ISSUE
 1 OF 1 SHEET
 DWG

103 Narrabeen Park Parade, Mona Vale, 2103

0m 1m 2m 3m 4m 5m 1922 / DA-L01A