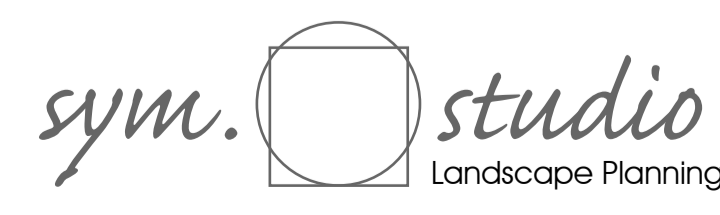




# BELLEVUE, MONA VALE

1749-1753 PITTWATER ROAD, MONA VALE, NSW

DEVELOPMENT APPLICATION LANDSCAPE PACKAGE  
DECEMBER 2024



GTA05-SK-000

Project: Mona Vale Shop Top Housing  
 Client: Gartner Trovato Architects  
 Stage: Concept Design  
 Prepared: Sym Studio  
 Date: 11/12/2024

PROJECT SPECIFIC IMAGERY

Local Character & Design Drivers

Local Character & Stories

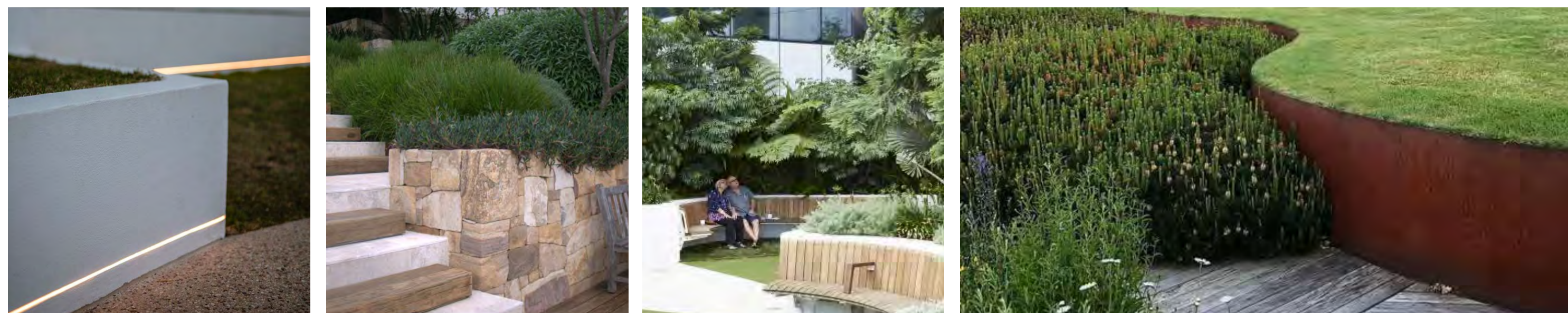


Conceptual Cues

Large Signature (white) Planter Pots



Look & Feel



Textured (Random pattern) Stone Walls contrasting Clean Simplistic Lines of horizontal paving

Overall planting: Evergreen shrub structure as backdrop to 'cool white' colours. Seasonal colour provided by small ornamental trees responding to windows and internal views.

OVERALL PLANTING INSPIRATION



Plant Schedule - Pittwater Rd. LEVEL 1					
Abbreviation	Botanical Name	Common Name	Mature Height (m)	Pot Size	Qty
<b>Trees</b>					
DRA dra	Dracaena Draco	Dragon tree	4-6	200L	1
<b>Shrubs</b>					
ALP zer	Alpinia zerumbet	Shell Ginger	1.5-2	25L	10
RHA ind OP	Rhaphiolepis indica 'Oriental Pearl'	Indian Hawthorn	1	400mm	12
ROS off	Rosmarinus officinalis	Rosemary	2-4	200mm	16
SYZ aus AM	Syzigium australe 'Allyn Magic'	Lilly Pilly	6	45L	10
<b>Accents</b>					
ACA mol	Acanthus mollis	Oyster Plant	2-5	200mm	5
ALO sp	Alocasia sp.	Alocasia	1.5-2.5	300mm	7
ART cir	Arthropodium cirratum	Ranga Lily	1	200mm	12
CYC rev (75)	cycas revoluta	Sago palm	1.5-2	75L	3
LEU bro	Leucophyta brownii	Cusion Bush	1	200mm	3
MAC com	Macrozamia communis	Burrawang	2-3	25L	1
RHA exc	Rhapis excelsa	The Lady Palm	2-4	300mm	8
SEN ser	Senecio serpens	Blue Chalksticks	0.2-0.3	140mm	10
STR jun	Strelitzia juncea	Rush-leaved	2	200mm	4
THY max	Thysanolaena maxima	Tiger Grass	5-8	35L	8
<b>Grasses &amp; Groundcovers</b>					
DIC arg SF	Dichondra argentea 'Silver Falls'	Silver Kidney Creeper	0.3	140mm	16
TRA jas	Trachelospermum jasminoides	Star Jasmine	0.5	Tube	3
ZOY ten	Zoysia tenifolia	Korean Velvet Grass	0.1-0.3	Tube	52

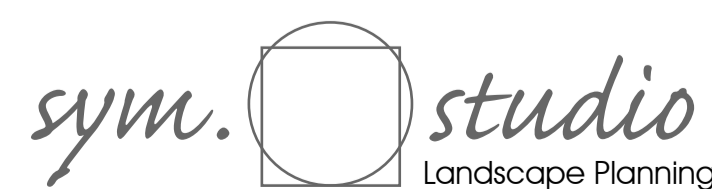
Plant Schedule - Bungun Ln. LEVEL 2					
Abbreviation	Botanical Name	Common Name	Mature Height (m)	Pot Size	Qty
<b>Trees</b>					
CER chi (200)	Cercis Chinensis	Chinese Redbud	4-6	200L	3
LAU nob	Laurus nobilis	Bay Tree	5-7	75L	3
LIV aus (2.0M)	Livistona australis	Cabbage-Tree Palm	25-30	200L	5
LIV aus (3.0M)	Livistona australis	Cabbage-Tree Palm	25-30	400L	5
LIV aus (4.0M)	Livistona australis	Cabbage-Tree Palm	25-30	750L	4
PYR cal C	Pyrus calleryana 'Capital'	Ornamental Pear	6-10	100L	2
<b>Shrubs</b>					
EUO jap GS	Euonymus japonicus 'Green Spire'	Spindle tree	1-2	300mm	22
GAU lin BW	Gaura linderheimeri 'Belleza White'	Wind Flower	1-1	200mm	14
LEU bro	Leucophyta brownii	Cusion Bush	1	200mm	10
MAG fig	Magnolia Figo	Port Wine Magnolia	3-4	25L	3
MET col FF	Metrosideros collina 'fiji fire'	Pacific Christmas Bush	2-3	300mm	41
PHO ten	Phormium tenax	New Zealand flax	4	300mm	20
PIT tob MM	Pittosporum tobira 'Miss Muffet'	Miss Muffet Pittosporum.	0.8-1	140mm	33
RHA ind OP	Rhaphiolepis indica 'Oriental Pearl'	Indian Hawthorn	1	400mm	53
ROS off	Rosmarinus officinalis	Rosemary	2-4	200mm	57
SYZ boo	Syzigium 'Boomer'	Lilly Pilly	1.5-2	25L	43
YUC ros	Yucca rostrata	Beaked yucca	3	300mm	10
ZAM fur	Zamioculcas furfuracea	Cardboard Cycad	0.5 - 1	200mm	16
<b>Accents</b>					
CYA coo	Cyathea cooperi	Tree fern	2-4	45L	5
DOR exc	Doryanthes excelsa	Giant Spear Lily	2-3	25L	13
MAC com	Macrozamia communis	Burrawang	2-3	25L	15
RHA exc	Rhapis excelsa	The Lady Palm	2-4	300mm	60
STR jun	Strelitzia juncea	Rush-leaved	2	200mm	14
THY max	Thysanolaena maxima	Tiger Grass	5-8	35L	29
<b>Grasses &amp; Groundcovers</b>					
ACA cog L	Acacia cognata 'Limelight'	River wattle	3-5	140mm	76
BRA mul BD	Brachyscome multifida 'Break O Day'	Rocky Daisy	0.2	140mm	20
CAR gla	Carpobrotus glaucescens	Pig Face	0.2	140mm	20
DIC arg SF	Dichondra argentea 'Silver Falls'	Silver Kidney Creeper	0.3	140mm	158
GAZ tom	Gazania tomentosa	Silver Gazania	0.2	100mm	50
HEM aur	Hemerocallis aurantiaca	Orange Daylily	0.8	140mm	70
HEL pet	Helichrysum petiolare	Licorice Plant	0.5	140mm	10
HIB sca	Hibbertia scandens	Golden guinea vine	-	140mm	40
LOM tan	Lomandra tanika	Fine mat rush	0.5	V/Cell	148
RHA spi	Rhagodia spinescens	Creeping Saltbush	0.8	140mm	18
SCA aem MC	Scaevola aemula 'Mauve Clusters'	Fan-flower	0.3-0.6	100mm	30
ZOY ten	Zoysia tenifolia	Korean Velvet Grass	0.1-0.3	Tube	125

Plant Schedule - LEVEL 3					
Abbreviation	Botanical Name	Common Name	Mature Height (m)	Pot Size	Qty
<b>Trees</b>					
LAU nob	Laurus nobilis	Bay Tree	5-7	75L	1
<b>Shrubs</b>					
CAL cit WA	Callistemon citrinus 'White Anzac'	White Bottlebrush	1.5	Tube	4
CAL cit LJ	Callistemon citrinus 'Little John'	Bottlebrush	0.8-1	200mm	8
EUO jap GS	Euonymus japonicus 'Green Spire'	Spindle tree	1-2	300mm	34
MAG fig	Magnolia Figo	Port Wine Magnolia	3-4	25L	5
PAN pan	Pandorea pandorana	Wonga wonga vine	6	200mm	4
ROS off	Rosmarinus officinalis	Rosemary	2-4	200mm	12
<b>Accents</b>					
SEN ser	Senecio serpens	Blue Chalksticks	0.2-0.3	140mm	16
<b>Grasses &amp; Groundcovers</b>					
BRA mul BD	Brachyscome multifida 'Break O Day'	Rocky Daisy	0.2	140mm	36
HEL pet	Helichrysum petiolare	Licorice Plant	0.5	140mm	20
TRA jas	Trachelospermum jasminoides	Star Jasmine	0.5	Tube	4
ZOY ten	Zoysia tenifolia	Korean Velvet Grass	0.1-0.3	Tube	20
VIO hed	Viola hederacea	Native Viola	-	V/Cell	20

Plant Schedule - LEVEL 4					
Abbreviation	Botanical Name	Common Name	Mature Height (m)	Pot Size	Qty
<b>Shrubs</b>					
EUO jap GS	Euonymus japonicus 'Green Spire'	Spindle tree	1-2	300mm	9
RHA ind CW	Rhaphiolepis indica 'Cosmic White'	Indian Hawthorn	0.6	140mm	11
ROS off	Rosmarinus officinalis	Rosemary	2-4	200mm	11
<b>Accents</b>					
SEN ser	Senecio serpens	Blue Chalksticks	0.2-0.3	140mm	13
<b>Grasses &amp; Groundcovers</b>					
HEL pet	Helichrysum petiolare	Licorice Plant	0.5	140mm	12
ZOY ten	Zoysia tenifolia	Korean Velvet Grass	0.1-0.3	Tube	12
VIO hed	Viola hederacea	Native Viola	-	V/Cell	12

Plant Schedule - LEVEL 5					
Abbreviation	Botanical Name	Common Name	Mature Height (m)	Pot Size	Qty
<b>Shrubs</b>					
RHA ind CW	Rhaphiolepis indica 'Cosmic White'	Indian Hawthorn	0.6	140mm	6
ROS off	Rosmarinus officinalis	Rosemary	2-4	200mm	6
<b>Grasses &amp; Groundcovers</b>					
SEN ser	Senecio serpens	Blue Chalksticks	0.2-0.3	140mm	8

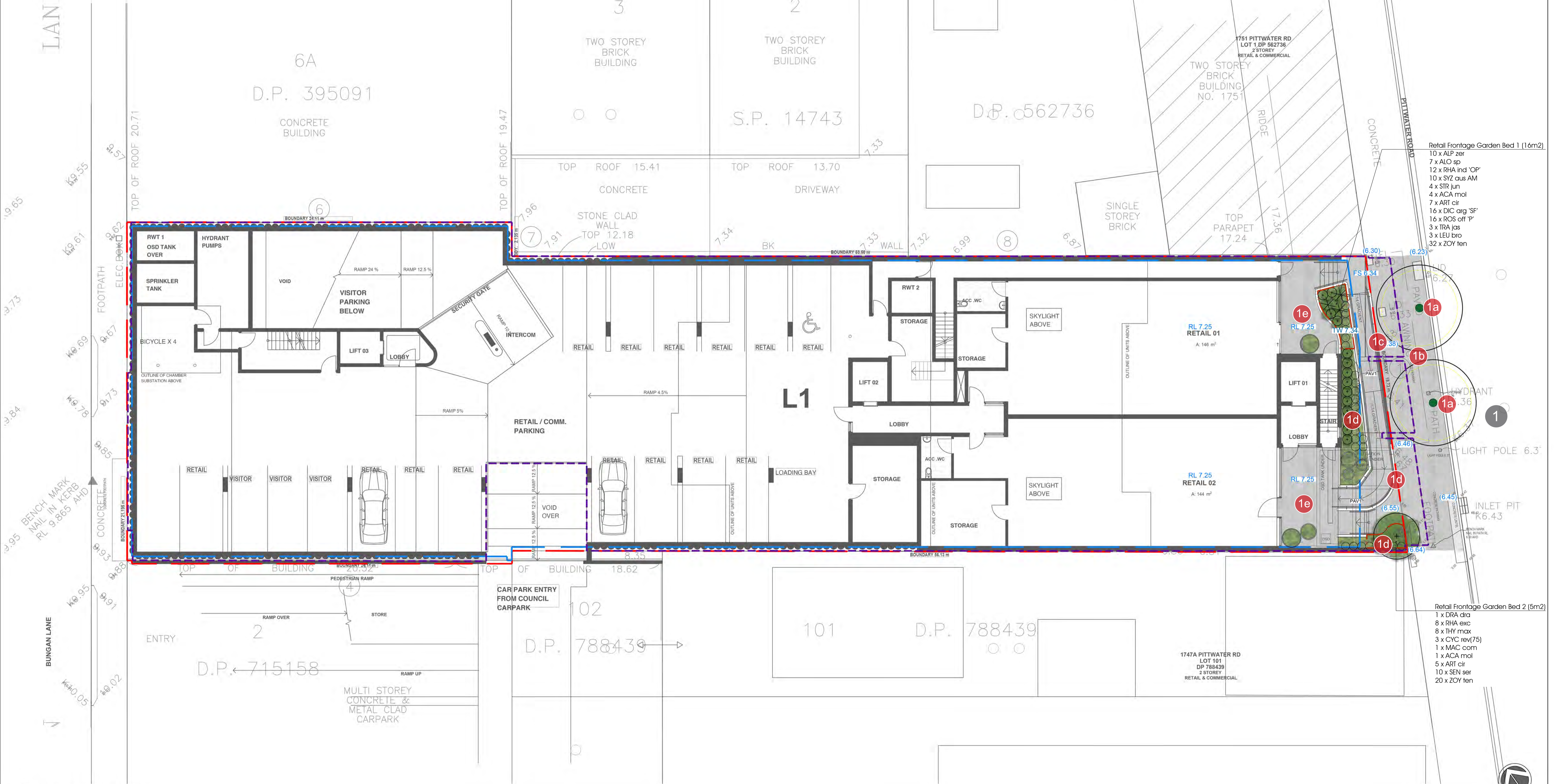
Plant Schedule - LEVEL 6					
Abbreviation	Botanical Name	Common Name	Mature Height (m)	Pot Size	Qty
<b>Trees</b>					
LAU nob	Laurus nobilis	Bay Tree	5-7	75L	6
<b>Shrubs</b>					
PIT tob MM	Pittosporum tobira 'Miss Muffet'	Miss Muffet Pittosporum.	0.8-1	140mm	43
RHA ind CW	Rhaphiolepis indica 'Cosmic White'	Indian Hawthorn	0.6	140mm	14
ROS off	Rosmarinus officinalis	Rosemary	2-4	200mm	26
<b>Accents</b>					
LEU bro	Leucophyta brownii	Cusion Bush	1	200mm	12
SEN ser	Senecio serpens	Blue Chalksticks	0.2-0.3	140mm	36
STR jun	Strelitzia juncea	Rush-leaved	2	200mm	14
<b>Grasses &amp; Groundcovers</b>					
DIA cae	Dianella caerulea var. Producta	Blue Flax Lily	1.5	Tube	24
DIC arg SF	Dichondra argentea 'Silver Falls'	Silver Kidney Creeper	0.3	140mm	24
HEL pet	Helichrysum petiolare	Licorice Plant	0.5	140mm	22
ZOY ten	Zoysia tenifolia	Korean Velvet Grass	0.1-0.3	Tube	21
VIO hed	Viola hederacea	Native Viola	-	V/Cell	21



KEY

1 PITWATER ROAD FRONTAGE

- 1a Existing Cupaniopsis anacardioides (6.0mH) to be protected and retained
- 1b Existing stone paving to be retained
- 1c New sandstone facing to accessible ramp
- 1d New raised planter 0.6m soil depth with planting, irrigation + uplights to plants
- 1e New entry pavement



- Retail Frontage Garden Bed 1 (16m2)
- 10 x ALP zer
  - 7 x ALO sp
  - 12 x RHA ind 'OP'
  - 10 x SVZ aus AM
  - 4 x STR jun
  - 4 x ACA mol
  - 7 x ART cir
  - 16 x DIC arg 'SF'
  - 16 x ROS off 'P'
  - 3 x TRA jas
  - 3 x LEU bro
  - 32 x ZOY ten

- Retail Frontage Garden Bed 2 (5m2)
- 1 x DRA dra
  - 8 x RHA exc
  - 8 x THY max
  - 3 x CYC rev(75)
  - 1 x MAC com
  - 1 x ACA mol
  - 5 x ART cir
  - 10 x SEN ser
  - 20 x ZOY ten

1 Landscape Plan - Level 1

Scale 1:100 @ B1

<p><b>FREE RETENTION, REMOVAL AND PRUNING</b></p> <p>EXISTING TREES - TO BE RETAINED &amp; PROTECTED (as per AS4373 - 2007, AS4970 - 2009, and AS4907)</p> <p>GENERAL</p> <p>PROPERTY BOUNDARY</p> <p>BUILDING OUTLINE ABOVE</p>	<p>BASEMENT OUTLINE</p> <p>MATERIALS &amp; FINISHES</p> <p>GARDEN EDGE</p> <p>GARDEN EDGE - Corten Steel</p>	<p>PAV1 PAVING TYPE 1 - Feature Paver</p> <p>PAV2 WATER ELEMENT</p> <p>PLANTED POTS</p> <p>POTS</p> <p>SEATING BENCH</p>	<p><b>PLANTING</b></p> <p>PROPOSED TREES</p> <p>MASS PLANTING</p> <p>GRADING &amp; DRAINAGE</p> <p>EXISTING LEVEL</p>	<p>FS 0.00 FINISHED SURFACE</p> <p>FG 0.00 FINISHED GROUND LEVEL</p> <p>FFL 0.00 FINISHED FLOOR LEVEL</p> <p>TW 0.00 TOP OF WALL</p> <p>TF 0.00 TOP OF FENCE</p>	<p>PROJECT: BELLEVUE MONA VALE 1749-1753 Pittwater Road, Mona Vale, NSW</p> <p>CLIENT: GARTNERPROVATO</p> <p>LANDSCAPE ARCHITECT: sym studio</p> <p>Phone: 61 2 8411 2734 4/6 Jubilee Avenue, Warriewood, NSW Australia www.symstudio.com</p>	<p>SCALE 1:100 @B1</p> <p>0 2 4 6 8 10m</p> <p>DRAWING TITLE: LANDSCAPE PLAN - LEVEL 1</p> <p>APPROVED FOR RELEASE: AILA #1420</p> <p>11/12/24 DF CG</p> <p>PROJECT No. GTA05 DRAWING No. GTA05-DA-101</p> <p>DATE: 11/12/24 ISSUE: AMENDMENT</p>
--	--	--	---	--	---	---

COPYRIGHT OF DESIGN SHOWN HERE IS RETAINED AND AUTHORITY FOR ANY REPRODUCTION IF IN DOUBT ASK. FOLLOW WRITTEN DIMENSIONS ONLY. DO NOT SCALE OFF DRAWINGS. DO NOT KEEP SUPERSEDED DRAWINGS ON SITE.

KEY

- |   |  |  |
|---|--|--|
| 2 BUNGAN LANE FRONTAGE                  | 3 COMMUNAL OPEN SPACE (COURTYARD 1)        | 4 COMMUNAL OPEN SPACE (COURTYARD 2)        |
| 2a Existing stone pavement              | 3a Covered walkway & green roof            | 4a Skylight to basement                    |
| 2b Existing concrete pavement           | 3b Private open space terrace              | 4b Private open space terrace              |
| 2c New stone pavement                   | 3c Vehicle access below (void)             | 4c Private bedroom garden                  |
| 2d New concrete kerb + gutter           | 3d Privacy screen / Fence, pallisade 1.8mH | 4d Privacy screen / Fence, pallisade 1.8mH |
| 2e Primary pedestrian entry / accessway | 3e Riverstory meeting place                | 4e Riverside confluence w/ water element   |
| 2f New commercial entrances             | 3f Raised deep soil planting 1.0mH         | 4f Raised deep soil planting 1.0mH         |
| 2g Waste area accessway                 | 3g Temperate planting palette              | 4g Temperate, river flat planting palette  |



1 Landscape Plan - Level 2

Scale 1:100 @ B1

<p><b>FREE RETENTION, REMOVAL AND PRUNING</b></p> <p>EXISTING TREES - TO BE RETAINED &amp; PROTECTED (as per AS4373 - 2007, AS4970 - 2009, and AS4907)</p> <p>GENERAL</p> <p>PROPERTY BOUNDARY</p> <p>BUILDING OUTLINE ABOVE</p>	<p><b>BASEMENT OUTLINE</b></p> <p><b>MATERIALS &amp; FINISHES</b></p> <p>GARDEN EDGE</p> <p>GARDEN EDGE - Corten Steel</p>	<p>PAV1 PAVING TYPE 1 - Feature Paver</p> <p>PAV2 WATER ELEMENT</p> <p>PLANTED POTS</p> <p>POTS</p> <p>SEATING BENCH</p>	<p><b>PLANTING</b></p> <p>PROPOSED TREES</p> <p>MASS PLANTING</p> <p>GRADING &amp; DRAINAGE</p> <p>EXISTING LEVEL</p>	<p>FS 0.00 FINISHED SURFACE</p> <p>FG 0.00 FINISHED GROUND LEVEL</p> <p>FFL 0.00 FINISHED FLOOR LEVEL</p> <p>TW 0.00 TOP OF WALL</p> <p>TF 0.00 TOP OF FENCE</p>	<p>PROJECT: BELLEVUE MONA VALE 1749-1753 Pittwater Road, Mona Vale, NSW</p> <p>CLIENT: LANDSCAPE ARCHITECT</p> <p><b>sym studio</b></p> <p>Phone: 61 2 8411 2734 4G/Jubilee Avenue, Warriewood, NSW Australia www.symstudio.com</p>	<p>SCALE 1:100 @ B1</p> <p>APPROVED FOR RELEASE</p> <p>AILA #1420</p> <p>11/12/24 DF CG</p> <p>PROJECT No: GTA05 DRAWING No: GTA05-DA-102 ISSUE: P2</p>



1 Landscape Plan - Level 3

Scale 1:100 @ B1

11/12/24	P2	DEVELOPMENT APPLICATION	DP
20/11/24	P1	EXTERNAL REVIEW	DP
DATE	ISSUE	AMENDMENT	BY

TREE RETENTION, REMOVAL AND PRUNING	
	EXISTING TREES - TO BE RETAINED & PROTECTED (as per AS4373 - 2007, AS4970 - 2009, and AS4907)
GENERAL	
	PROPERTY BOUNDARY
	BUILDING OUTLINE ABOVE

MATERIALS & FINISHES	
	BASEMENT OUTLINE
	GARDEN EDGE
	GARDEN EDGE - Corten Steel

	PAV1	PAVING TYPE 1 - Feature Paver
	PAV2	WATER ELEMENT
		PLANTED POTS
		POTS
		SEATING BENCH

PLANTING	
	PROPOSED TREES
	MASS PLANTING
	GRADING & DRAINAGE
	EXISTING LEVEL

	FS 0.00	FINISHED SURFACE
	FG 0.00	FINISHED GROUND LEVEL
	FFL 0.00	FINISHED FLOOR LEVEL
	TW 0.00	TOP OF WALL
	TF 0.00	TOP OF FENCE

PROJECT  
**BELLEVUE, MONA VALE**  
1749-1753 Pittwater Road, Mona Vale, NSW

CLIENT  
**GARTNERPROVAT**

LANDSCAPE ARCHITECT  
**sym studio**  
Phone: 61 2 8411 2734  
4/6 Jubilee Avenue, Warriewood, NSW Australia  
www.symstudio.com

SCALE 1:100 @B1	0 2 4 6 8 10m
DRAWING TITLE	
LANDSCAPE PLAN - LEVEL 3	
APPROVED FOR RELEASE	
AILA #1420	
DRAWN	CHECKED
11/12/24	DF
CG	CG
PROJECT No.	DRAWING No.
GTA05	GTA05-DA-103
	P2

DRAWING TITLE	
LANDSCAPE PLAN - LEVEL 3	
APPROVED FOR RELEASE	
AILA #1420	
DRAWN	CHECKED
11/12/24	DF
CG	CG
PROJECT No.	DRAWING No.
GTA05	GTA05-DA-103
	P2

COPYRIGHT OF DESIGN SHOWN HERE IS RETAINED AND AUTHORITY FOR ANY REPRODUCTION, IF IN DOUBT ASK. FOLLOW WRITTEN DIMENSIONS ONLY. DO NOT SCALE OFF DRAWINGS. DO NOT KEEP SUPERSEDED DRAWINGS ON SITE.



1 Landscape Plan - Level 4

Scale 1:100 @ B1

11/12/24	P2	DEVELOPMENT APPLICATION	CF
20/11/24	P1	INTERNAL REVIEW	CF
DATE	ISSUE	AMENDMENT	BY

**FREE RETENTION, REMOVAL AND PRUNING**  
 EXISTING TREES - TO BE RETAINED & PROTECTED (as per AS4373 - 2007, AS4970 - 2009, and AS4907)

**GENERAL**  
 PROPERTY BOUNDARY  
 BUILDING OUTLINE ABOVE

**BASEMENT OUTLINE**

**MATERIALS & FINISHES**  
 GARDEN EDGE  
 GARDEN EDGE - Corten Steel

**PAV1** PAVING TYPE 1 - Feature Paver  
**PAV2** WATER ELEMENT  
**PLANTED POTS**  
**POTS**  
**SEATING BENCH**

**PLANTING**  
 PROPOSED TREES  
 MASS PLANTING  
 GRADING & DRAINAGE  
 (0.00) EXISTING LEVEL

**FS 0.00** FINISHED SURFACE  
**FG 0.00** FINISHED GROUND LEVEL  
**FFL 0.00** FINISHED FLOOR LEVEL  
**TW 0.00** TOP OF WALL  
**TF 0.00** TOP OF FENCE

PROJECT  
**BELLEVUE, MONA VALE**  
 1749-1753 Pittwater Road, Mona Vale, NSW

CLIENT  
**GARTNERSTROVATO**

SCALE 1:100 @ B1

LANDSCAPE ARCHITECT  
**sym studio**  
 Phone: 61 2 8411 2734  
 4/6 Jubilee Avenue, Warriewood, NSW Australia  
 www.symstudio.com

DRAWING TITLE  
**LANDSCAPE PLAN - LEVEL 4**

APPROVED FOR RELEASE  
 AILA #1420

11/12/24  
 PROJECT No. **GTA05**  
 DRAWING No. **GTA05-DA-104**  
 ISSUE **P2**

DRAWN **DF**  
 CHECKED **CG**  
 ISSUE

COPYRIGHT OF DESIGN SHOWN HERE IS RETAINED AND AUTHORITY FOR ANY REPRODUCTION IF IN DOUBT ASK. FOLLOW WRITTEN DIMENSIONS ONLY. DO NOT SCALE OFF DRAWINGS. DO NOT KEEP SUPERSEDED DRAWINGS ON SITE.



1 Landscape Plan - Level 5

Scale 1:100 @ B1

11/12/24	P2	DEVELOPMENT APPLICATION	DP
20/11/24	P1	INTERNAL REVIEW	DP
DATE	ISSUE	AMENDMENT	BY

**TREE RETENTION, REMOVAL AND PRUNING**

EXISTING TREES - TO BE RETAINED & PROTECTED (as per AS4373 - 2007, AS4970 - 2009, and AS4907)

GENERAL

- PROPERTY BOUNDARY
- BUILDING OUTLINE ABOVE

**MATERIALS & FINISHES**

- GARDEN EDGE
- GARDEN EDGE - Corten Steel

**PAVING**

- PAV1 PAVING TYPE 1 - Feature Paver
- PAV2 WATER ELEMENT
- PLANTED POTS
- POTS
- SEATING BENCH

**PLANTING**

- PROPOSED TREES
- MASS PLANTING
- GRADING & DRAINAGE
- EXISTING LEVEL

- FS 0.00 FINISHED SURFACE
- FG 0.00 FINISHED GROUND LEVEL
- FFL 0.00 FINISHED FLOOR LEVEL
- TW 0.00 TOP OF WALL
- TF 0.00 TOP OF FENCE

PROJECT  
**BELLEVUE, MONA VALE**  
1749-1753 Pittwater Road, Mona Vale, NSW

CLIENT  
**GARTNERSTROYAR**

SCALE 1:100 @B1

LANDSCAPE ARCHITECT  
**sym studio**

Phone: 61 2 8411 2734  
4/6 Jubilee Avenue, Warriewood, NSW Australia  
www.symstudio.com

DRAWING TITLE  
**LANDSCAPE PLAN - LEVEL 5**

APPROVED FOR RELEASE  
AILA #1420

11/12/24	DF	CG
PROJECT No.	DRAWING No.	ISSUE
GTA05	GTA05-DA-105	P2

COPYRIGHT OF DESIGN SHOWN HERE IS RETAINED AND AUTHORITY FOR ANY REPRODUCTION, IF IN DOUBT ASK. FOLLOW WRITTEN DIMENSIONS ONLY. DO NOT SCALE OFF DRAWINGS. DO NOT KEEP SUPERSEDED DRAWINGS ON SITE.





1 Landscape Plan - Level 6

Scale 1:100 @ B1

11/12/24	P2	DEVELOPMENT APPLICATION	DP
20/11/24	P1	INTERNAL REVIEW	DP
DATE	ISSUE	AMENDMENT	BY

**TREE RETENTION, REMOVAL AND PRUNING**

EXISTING TREES - TO BE RETAINED & PROTECTED (as per AS4373 - 2007, AS4970 - 2009, and AS4907)

GENERAL

- PROPERTY BOUNDARY
- BUILDING OUTLINE ABOVE

**MATERIALS & FINISHES**

- GARDEN EDGE
- GARDEN EDGE - Corten Steel

**PAVING**

- PAV1 PAVING TYPE 1 - Feature Paver
- PAV2 WATER ELEMENT
- PLANTED POTS
- POTS
- SEATING BENCH

**PLANTING**

- PROPOSED TREES
- MASS PLANTING
- GRADING & DRAINAGE
- EXISTING LEVEL

- FS 0.00 FINISHED SURFACE
- FG 0.00 FINISHED GROUND LEVEL
- FFL 0.00 FINISHED FLOOR LEVEL
- TW 0.00 TOP OF WALL
- TF 0.00 TOP OF FENCE

PROJECT  
**BELLEVUE, MONA VALE**  
1749-1753 Pittwater Road, Mona Vale, NSW

CLIENT

SCALE 1:100 @B1

LANDSCAPE ARCHITECT

**sym studio**

Phone: 61 2 8411 2734  
4/6 Jubilee Avenue, Warriewood, NSW Australia  
www.symstudio.com

DRAWING TITLE

**LANDSCAPE PLAN - LEVEL 6**

APPROVED FOR RELEASE

AILA #1420

11/12/24	DF	CG
PROJECT No.	DRAWING No.	ISSUE
GTA05	GTA05-DA-106	P2

COPYRIGHT OF DESIGN SHOWN HERE IS RETAINED AND AUTHORITY FOR ANY REPRODUCTION, IF IN DOUBT ASK. FOLLOW WRITTEN DIMENSIONS ONLY. DO NOT SCALE OFF DRAWINGS. DO NOT KEEP SUPERSEDED DRAWINGS ON SITE.