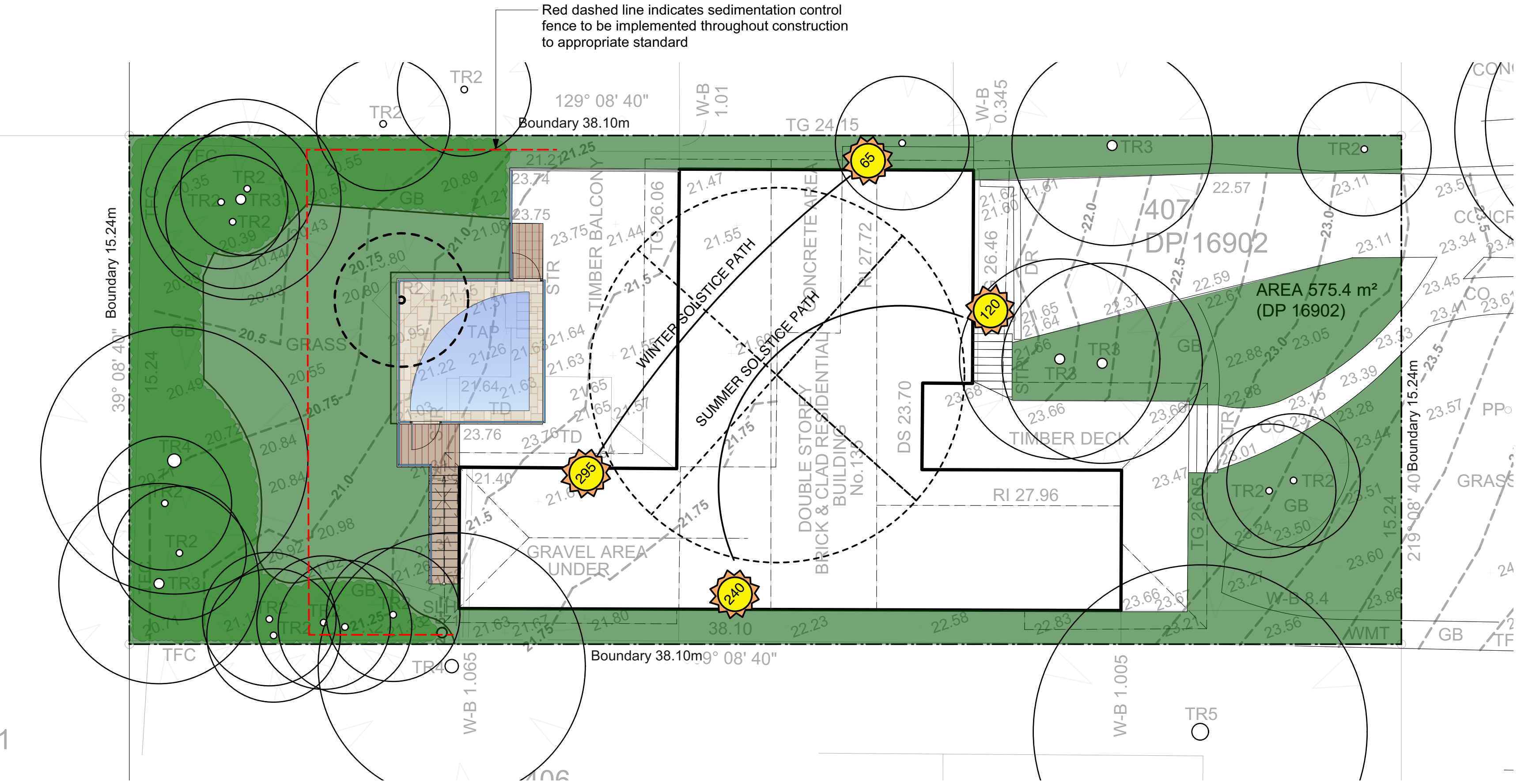
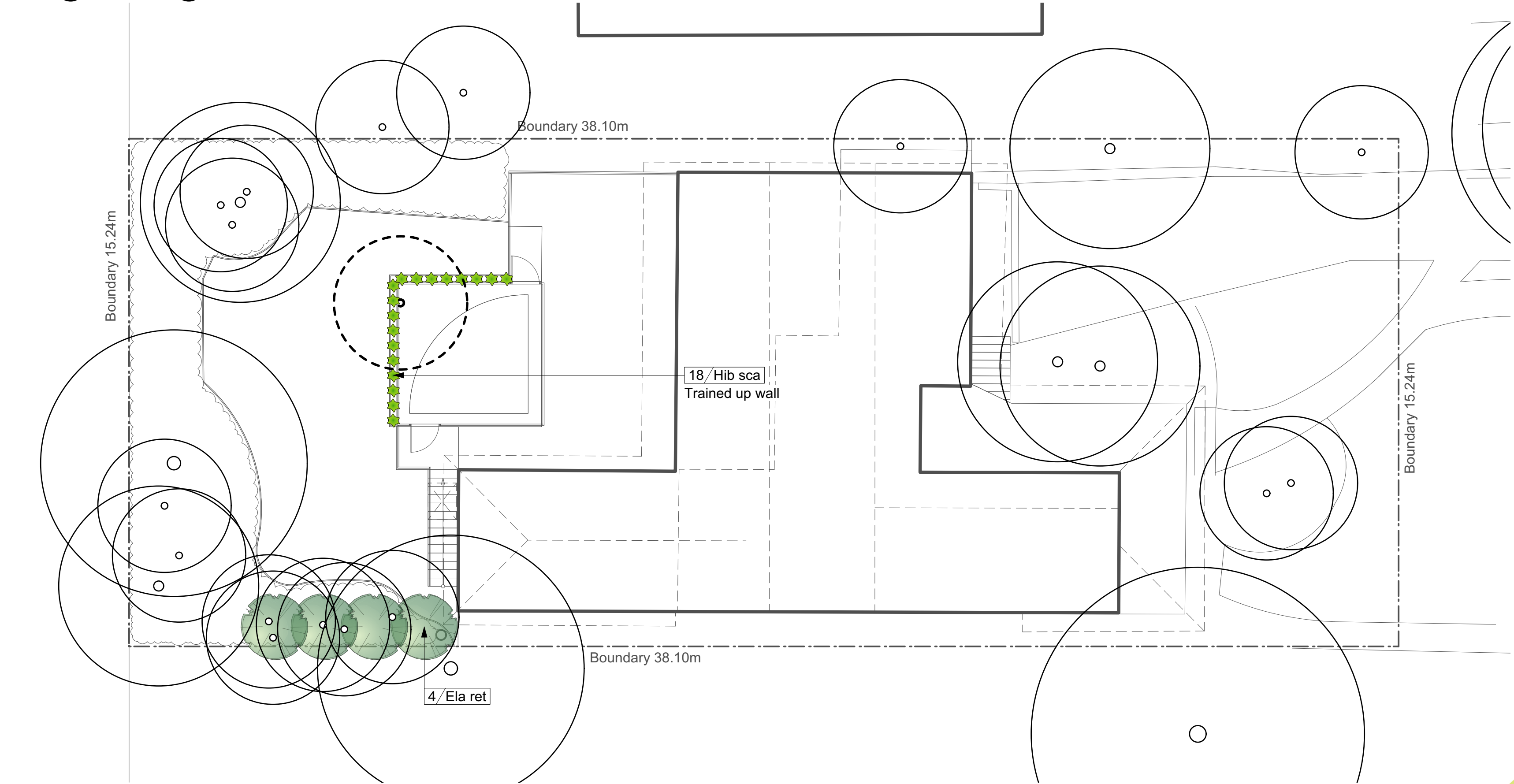


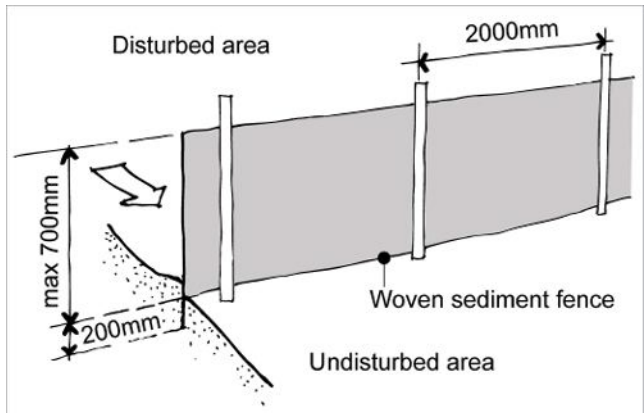
Site Plan
1:100@A1 1:200@A3. Do not scale off plan



Planting Plan
1:100@A1 1:200@A3. Do not scale off plan



THIS PLAN IS TO BE READ IN CONJUNCTION WITH THE CONDITIONS OF DEVELOPMENT CONSENT
DA2021/0076



Sedimentation Control Fence
Not to scale.
Source: www.yourhome.gov.au

- Legend
- MULCH AREA
 - TURF AREA
 - TIMBER DECKING
 - CONCRETE PAVING
 - UNIT PAVING
 - STAIRS
 - PEBBLE
 - GRAVEL
 - COBBLESTONE
 - TIMBER
 - WATER
 - MASONRY RETAINING WALL
 - STONE RETAINING WALL
 - TIMBER RETAINING WALL
 - BOULDER RETAINING WALL
 - SITE OR WORKS BOUNDARY
 - PROPOSED LEVEL
 - TOP OF WALL LEVEL
 - MATERIAL NAME
 - SURFACE FALL DIRECTION
 - SURFACE DRAINS
 - SURVEY (50% GREY LINES)
 - EXISTING TREE TO RETAIN
 - EXISTING TREE TO REMOVE
 - EXISTING ROCK OUTCROP



ELAEOCARPUS

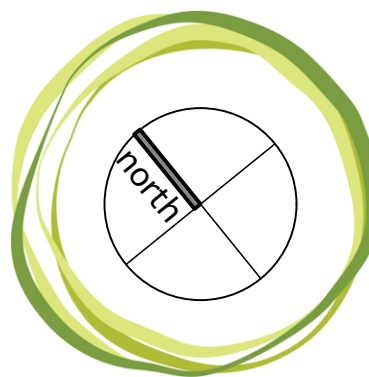


HIBBERTIA SCANDENS

ID	Quantity	Latin Name	Common Name	Scheduled Size	Mature Height	Mature Spread
Ela ret	4	Elaeocarpus reticulatus	Blueberry Ash	25lt	5 - 10m	3.5 - 6m
Hib sca	18	Hibbertia scandens	Golden Guinea Flower	150mm	0.0 - 0.3m	3.5 - 6m

ISSUE	DATE	REVISION
E	23/03/21	Issue E for DA
D	25/01/21	Issue D for DA
C	18/01/21	Issue C for DA
B	13/01/21	Issue B
A	20/12/20	DRAFT issue for review

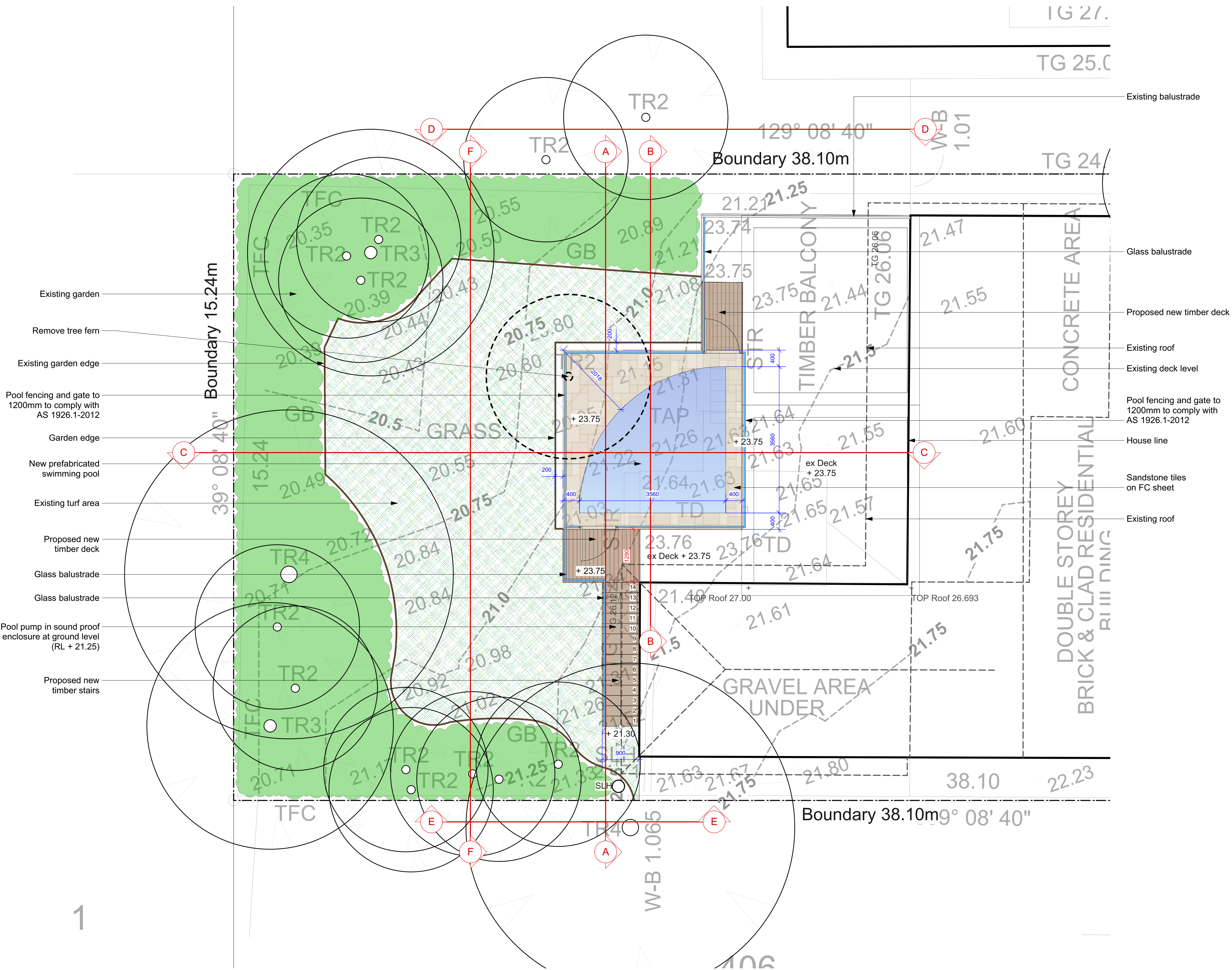
Notes:
>Do not scale off plan.
>Contractors to check all measurements onsite before quoting or commencing work.
>If abnormalities arise, contact the Landscape Architect.
>This design is copyright and is not to be reproduced in anyway without written consent of Jamie King Landscape Architect



JAMIE KING
LANDSCAPE ARCHITECT
DESIGN • APPROVE • MANAGE

PROJECT	135 Palmgrove Road Avalon	PROJECT #	21056
CLIENT	Hutchinson	DATE #	See above
DWG	Master Landscape Plan	SCALE @ A1	See Plan
CHKD	JK	DRAWN	SA
		REVISION	

Jamie King Landscape Architect
84 Palmgrove Rd, Avalon, NSW, 2107
T: 0421 517 991
W: www.jamieking.com.au
E: jamie@jamieking.com.au



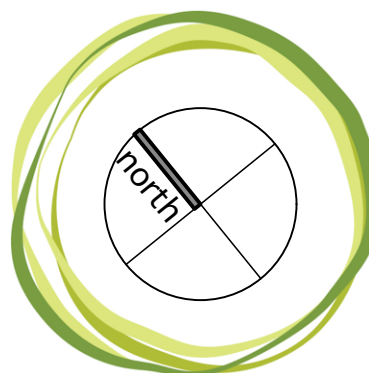
Legend	
	MULCH AREA
	TURF AREA
	TIMBER DECKING
	CONCRETE PAVING
	UNIT PAVING
	STAIRS
	PEBBLE
	GRAVEL
	COBBLESTONE
	TIMBER
	WATER
	MASONRY RETAINING WALL
	STONE RETAINING WALL
	TIMBER RETAINING WALL
	BOULDER RETAINING WALL
	SITE OR WORKS BOUNDARY
	PROPOSED LEVEL
	TOP OF WALL LEVEL
	MATERIAL NAME
	SURFACE FALL DIRECTION
	SURFACE DRAINS
	SURVEY (50% GREY LINES)
	EXISTING TREE TO RETAIN
	EXISTING TREE TO REMOVE
	EXISTING ROCK OUTCROP

Notes:
>Do not scale off plan.
>Contractors to check all measurements onsite before quoting or commencing work.
>If abnormalities arise, contact the Landscape Architect.
>This design is copyright and is not to be reproduced in anyway without written consent of Jamie King Landscape Architect

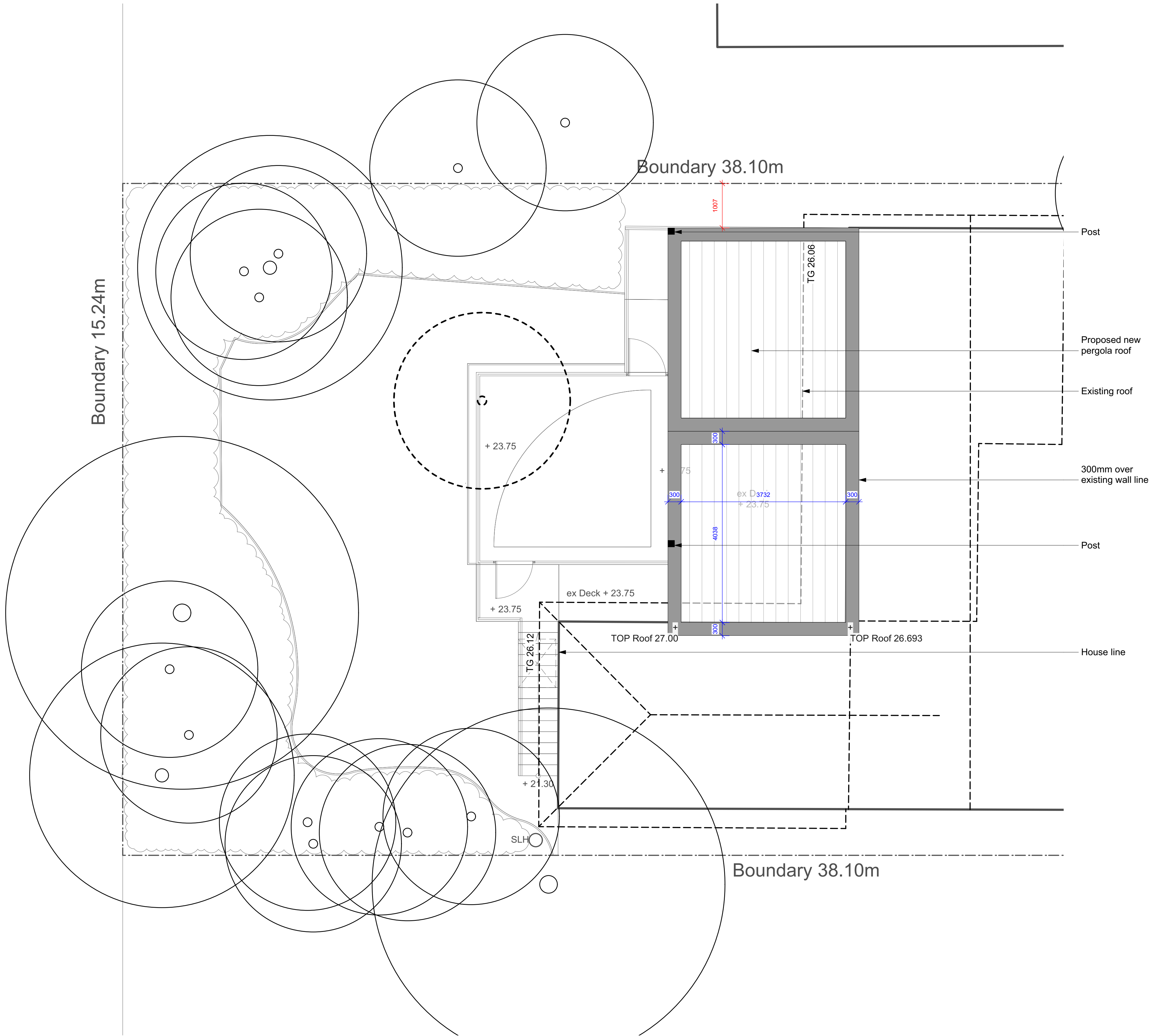
E	23/03/21	Issue E for DA
D	25/01/21	Issue D for DA
C	18/01/21	Issue C for DA
B	13/01/21	Issue B
A	20/12/20	DRAFT issue for review

ISSUE		DATE	REVISION
PROJECT			
135 Palmgrove Road Avalon			PROJECT # 21056
CLIENT			DATE # See above DWG #
Hutchinson			SCALE @ A1 See Plan
DWG			DRAWN SA
Detail Plan			CHKD JK
			REVISION

Jamie King Landscape Architect
84 Palmgrove Rd, Avalon, NSW, 2107 T: 0421 517 991 E: jamie@jamieking.com.au
W: www.jamieking.com.au



JAMIE KING
LANDSCAPE ARCHITECT
DESIGN ● APPROVE ● MANAGE



 northern beaches council
THIS PLAN IS TO BE READ IN CONJUNCTION WITH THE CONDITIONS OF DEVELOPMENT CONSENT
DA2021/0076

Legend

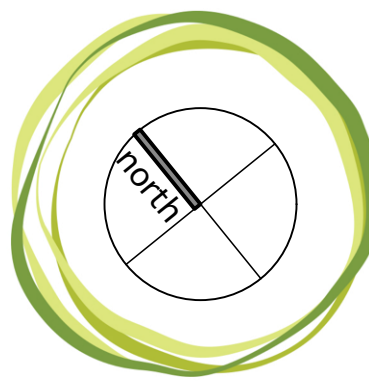
- MULCH AREA
- TURF AREA
- TIMBER DECKING
- CONCRETE PAVING
- UNIT PAVING
- STAIRS
- PEBBLE
- GRAVEL
- COBBLESTONE
- TIMBER
- WATER
- MASONRY RETAINING WALL
- STONE RETAINING WALL
- TIMBER RETAINING WALL
- BOULDER RETAINING WALL
- SITE OR WORKS BOUNDARY
- PROPOSED LEVEL
- TOP OF WALL LEVEL
- MATERIAL NAME
- SURFACE FALL DIRECTION
- SURFACE DRAINS
- SURVEY (50% GREY LINES)
- EXISTING TREE TO RETAIN
- EXISTING TREE TO REMOVE
- EXISTING ROCK OUTCROP

Notes:
>Do not scale off plan.
>Contractors to check all measurements onsite before quoting or commencing work.
>If abnormalities arise, contact the Landscape Architect.
>This design is copyright and is not to be reproduced in anyway without written consent of Jamie King Landscape Architect

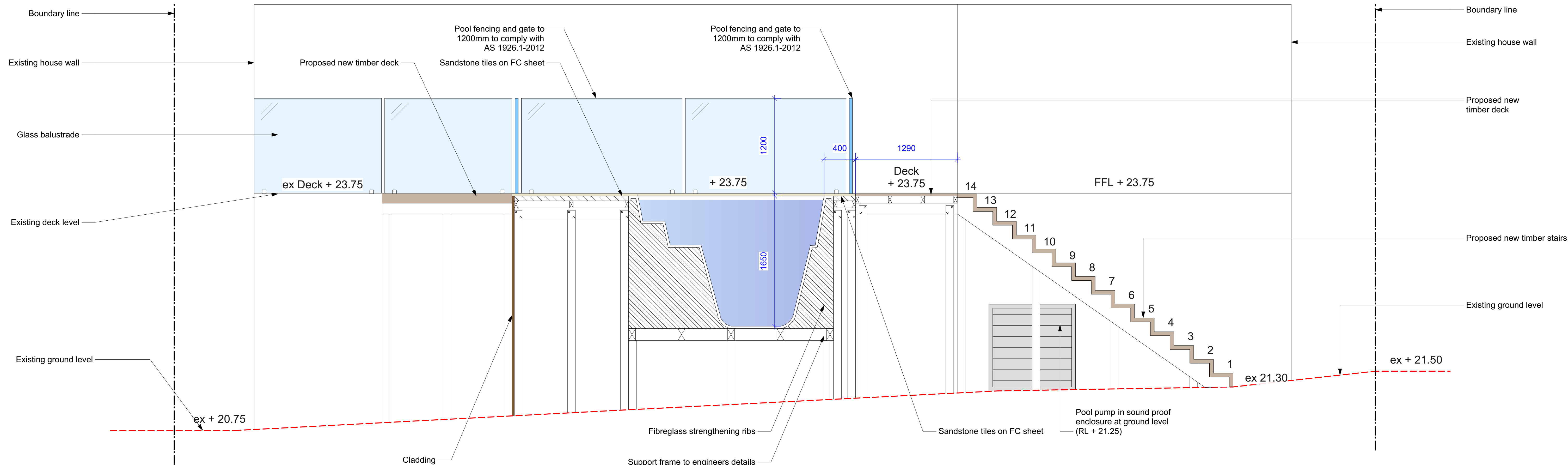
E	23/03/21	Issue E for DA
D	25/01/21	Issue D for DA
C	18/01/21	Issue C for DA
B	13/01/21	Issue B
A	20/12/20	DRAFT issue for review

ISSUE	DATE	REVISION	PROJECT #
PROJECT	135 Palmgrove Road Avalon		21056
CLIENT	Hutchinson	DATE # See above SCALE @ A1 See Plan	DWG # Sht-103
DWG	Roof Plan	DRAWN SA CHKD JK	REVISION

Jamie King Landscape Architect
84 Palmgrove Rd, Avalon, NSW, 2107
W: www.jamieking.com.au
E: jamie@jamieking.com.au
T: 0421 517 991

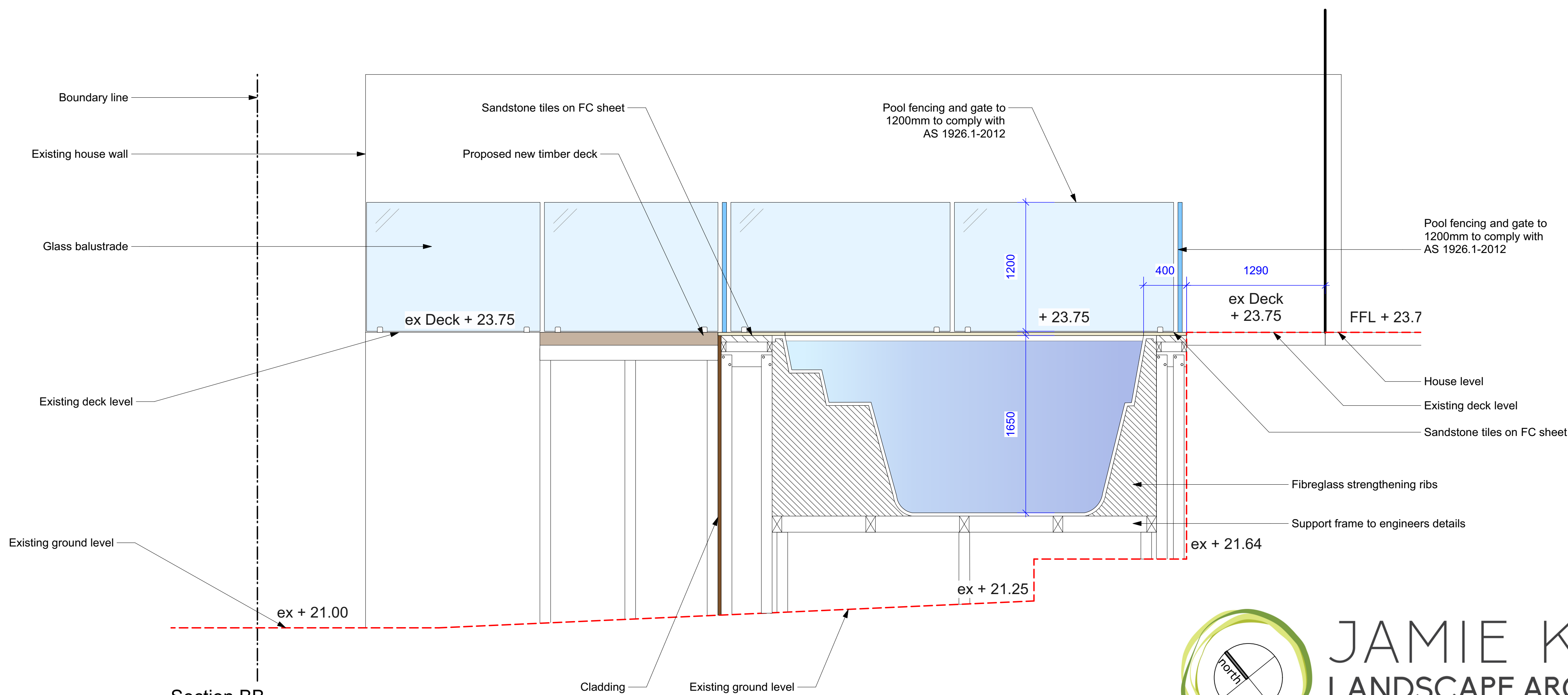


JAMIE KING
LANDSCAPE ARCHITECT
DESIGN ● APPROVE ● MANAGE

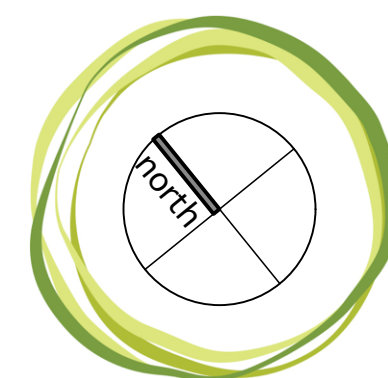


Section AA
1:25@A1 1:50@A3. Do not scale off plan

THIS PLAN IS TO BE READ IN CONJUNCTION WITH THE CONDITIONS OF DEVELOPMENT CONSENT
DA2021/0076



Section BB
1:25@A1 1:50@A3. Do not scale off plan



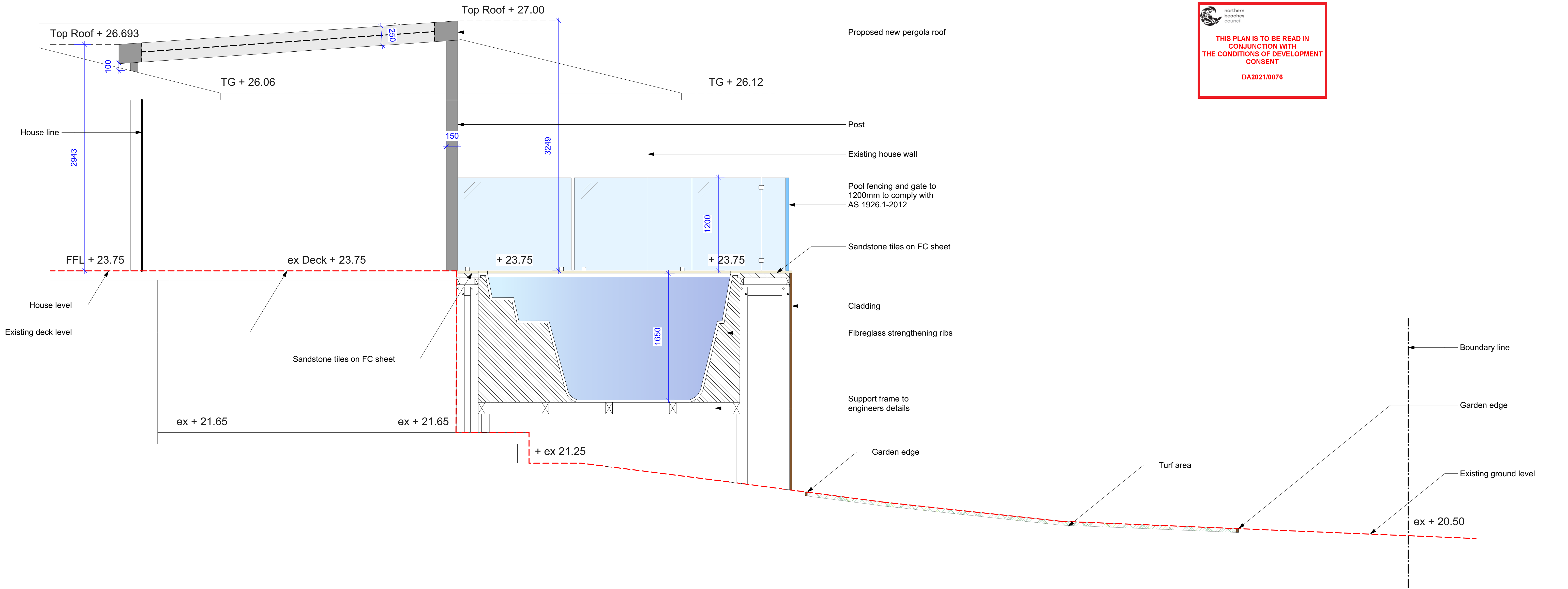
JAMIE KING
LANDSCAPE ARCHITECT
DESIGN • APPROVE • MANAGE

E	23/03/21	Issue E for DA
D	25/01/21	Issue D for DA
C	18/01/21	Issue C for DA
B	13/01/21	Issue B
A	20/12/20	DRAFT issue for review

ISSUE	DATE	REVISION	PROJECT #
PROJECT	135 Palmgrove Road Avalon		21056
CLIENT	Hutchinson	DATE # See above SCALE @ A1 See Plan	DWG # Sht-104
DWG	Sections	DRAWN SA CHKD JK	REVISION

Jamie King Landscape Architect
84 Palmgrove Rd, Avalon, NSW, 2107
T: 0421 517 991
W: www.jamieking.com.au
E: jamie@jamieking.com.au

Notes:
>Do not scale off plan.
>Contractors to check all measurements onsite before quoting or commencing work.
>If abnormalities arise, contact the Landscape Architect.
>This design is copyright and is not to be reproduced in anyway without written consent of Jamie King Landscape Architect



**THIS PLAN IS TO BE READ IN
CONJUNCTION WITH
THE CONDITIONS OF DEVELOPMENT
CONSENT**

DA2021/0076

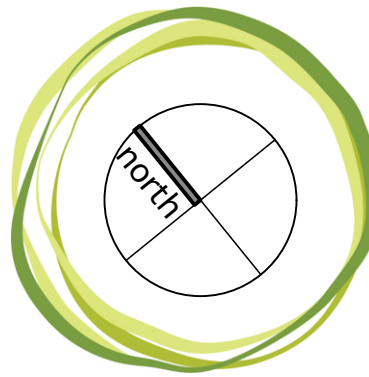
Section CC
1:25@A1 1:50@A3. Do not scale off plan

Notes:
>Do not scale off plan.
>Contractors to check all measurements onsite before quoting or commencing work.
>If abnormalities arise, contact the Landscape Architect.
>This design is copyright and is not to be reproduced in anyway without written consent of Jamie King Landscape Architect

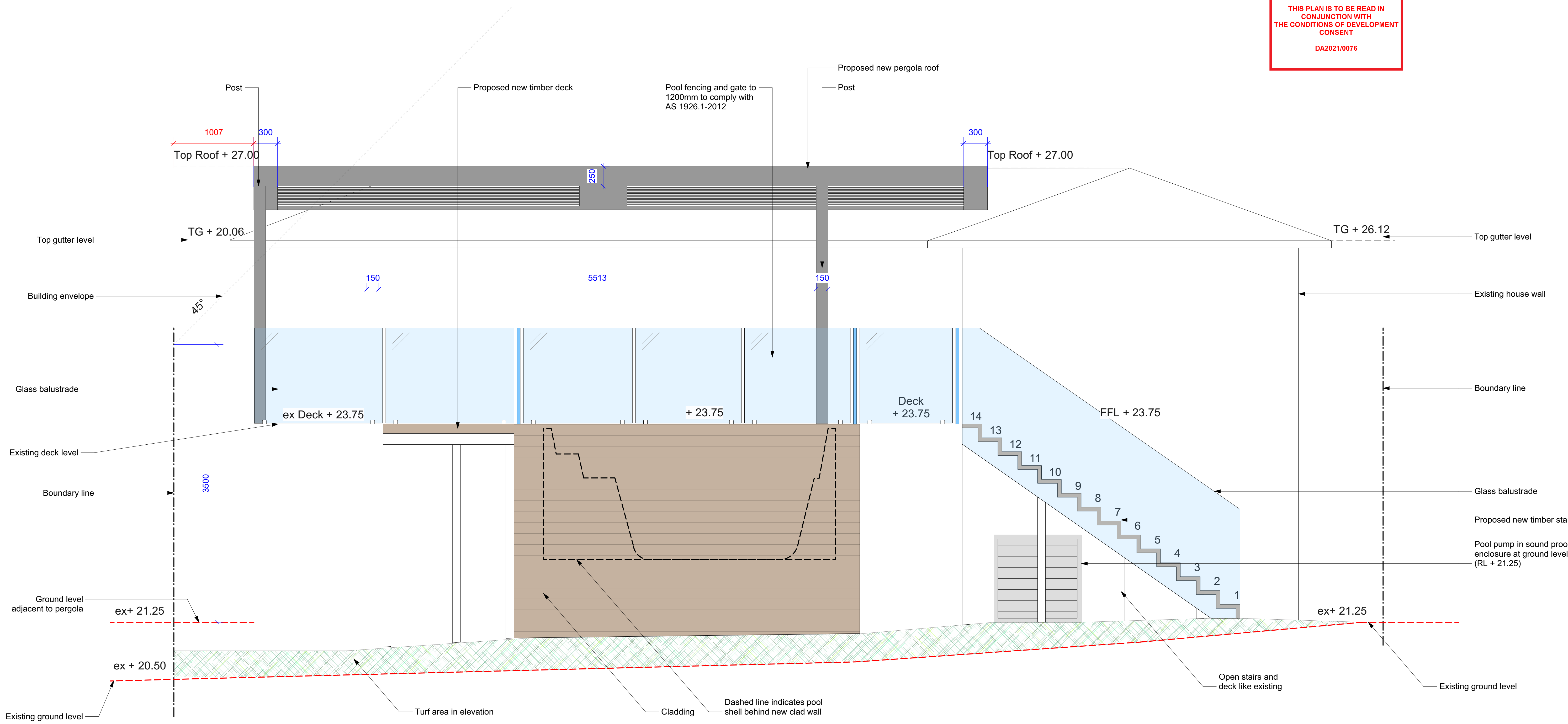
E	23/03/21	Issue E for DA
D	25/01/21	Issue D for DA
C	18/01/21	Issue C for DA
B	13/01/21	Issue B
A	20/12/20	DRAFT issue for review

ISSUE	DATE	REVISION
PROJECT	135 Palmgrove Road Avalon	PROJECT # 21056
CLIENT	Hutchinson	DATE # See above DWG #
DWG	Sections	SCALE @ A1 See Plan Sht-105
CHKD	JK	REVISION

Jamie King Landscape Architect
84 Palmgrove Rd, Avalon, NSW, 2107 T: 0421 517 991 E: jamie@jamieking.com.au
W: www.jamieking.com.au



JAMIE KING
LANDSCAPE ARCHITECT
DESIGN • APPROVE • MANAGE





JAMIE KING

LANDSCAPE ARCHITECT

DESIGN ● APPROVE ● MANAGE

ISSUE	DATE	REVISION	
PROJECT	135 Palmgrove Road Avalon		PROJECT # 21056
CLIENT	Hutchinson	DATE # SCALE @ A1	DWG # Sht-10
DWG	Elevations	DRAWN SA	CHKD JK

Jamie King Landscape Architect
 84 Palmgrove Rd, Avalon, NSW, 2107 T: 0421 517 991

W: www.jamieking.com.au
 E: jamie@jamieking.com.au