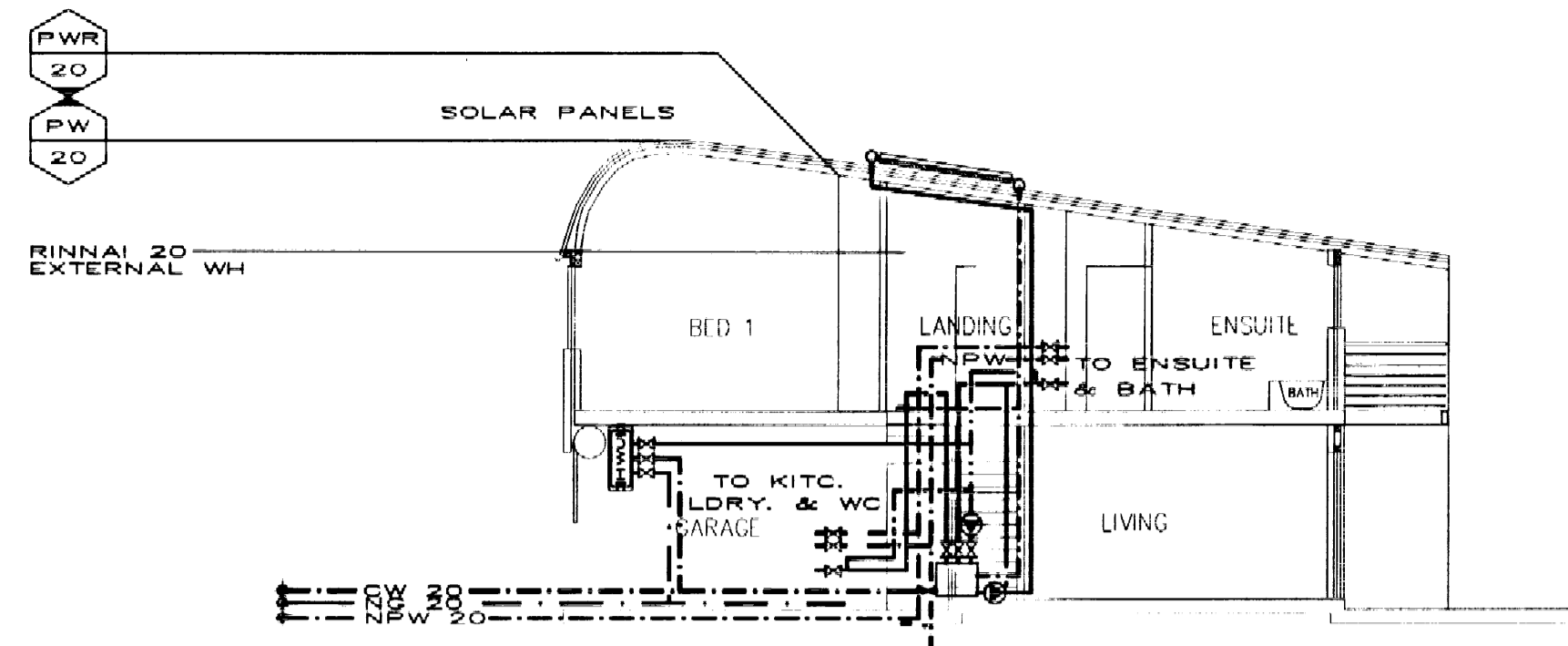
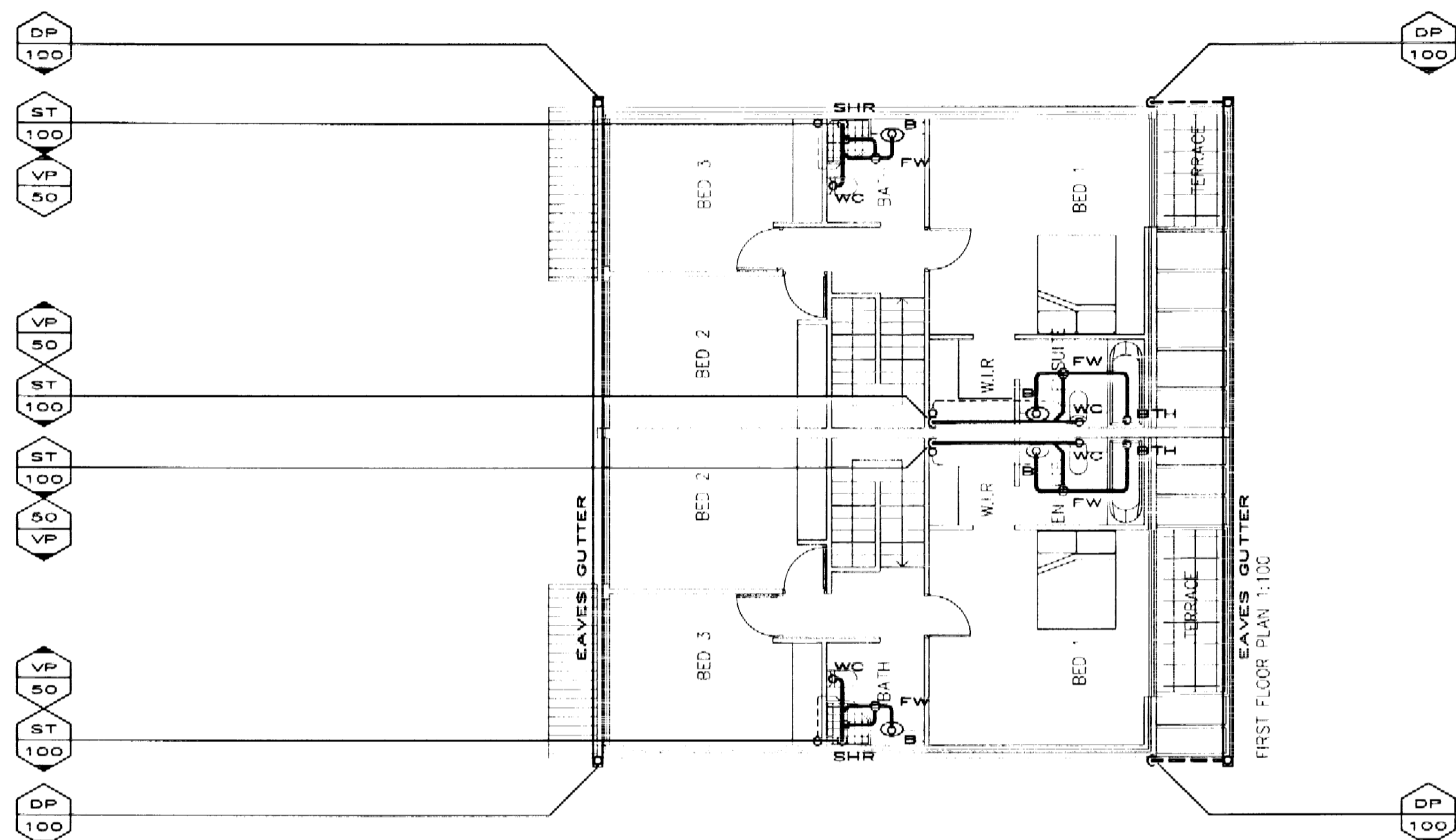


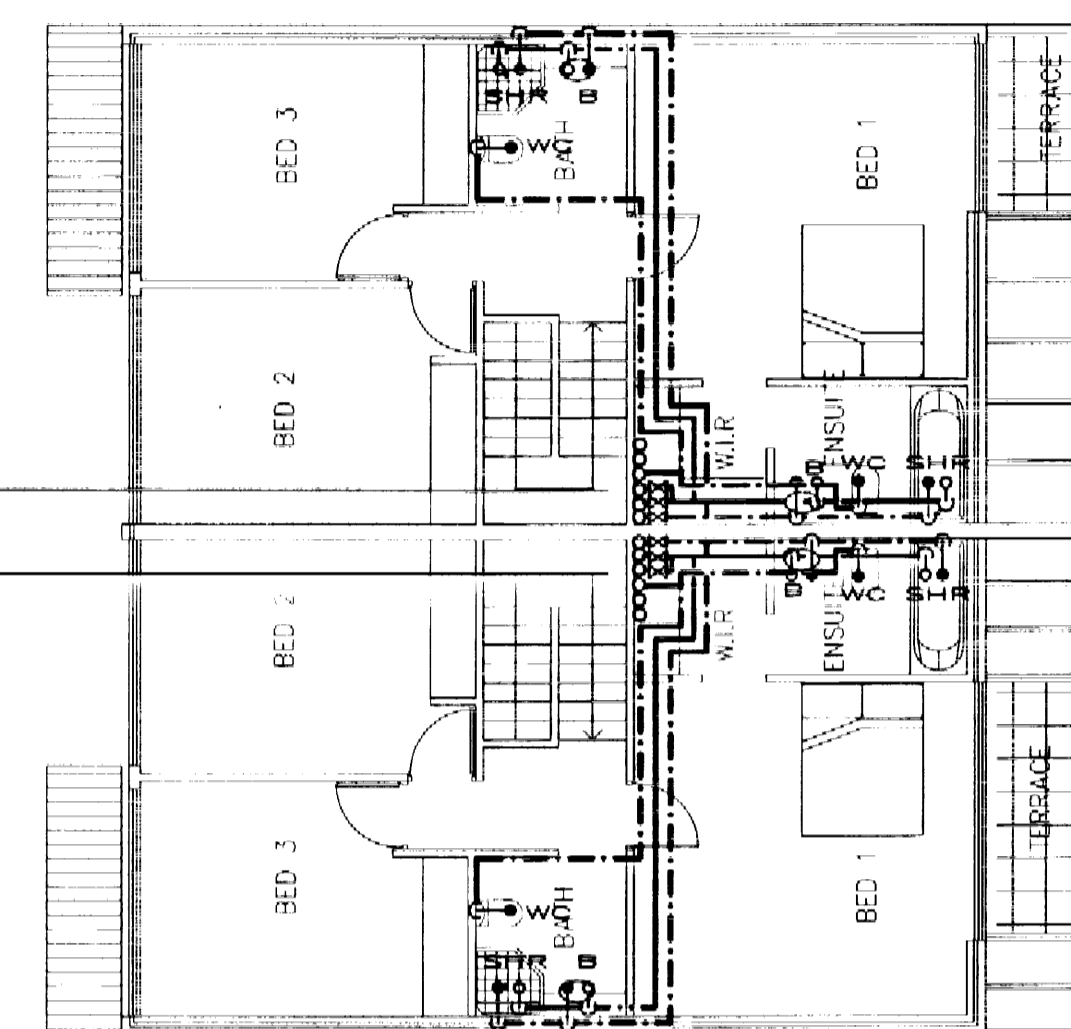
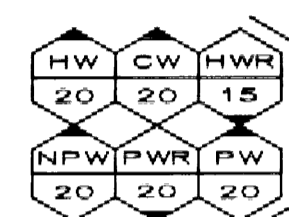
SECTION



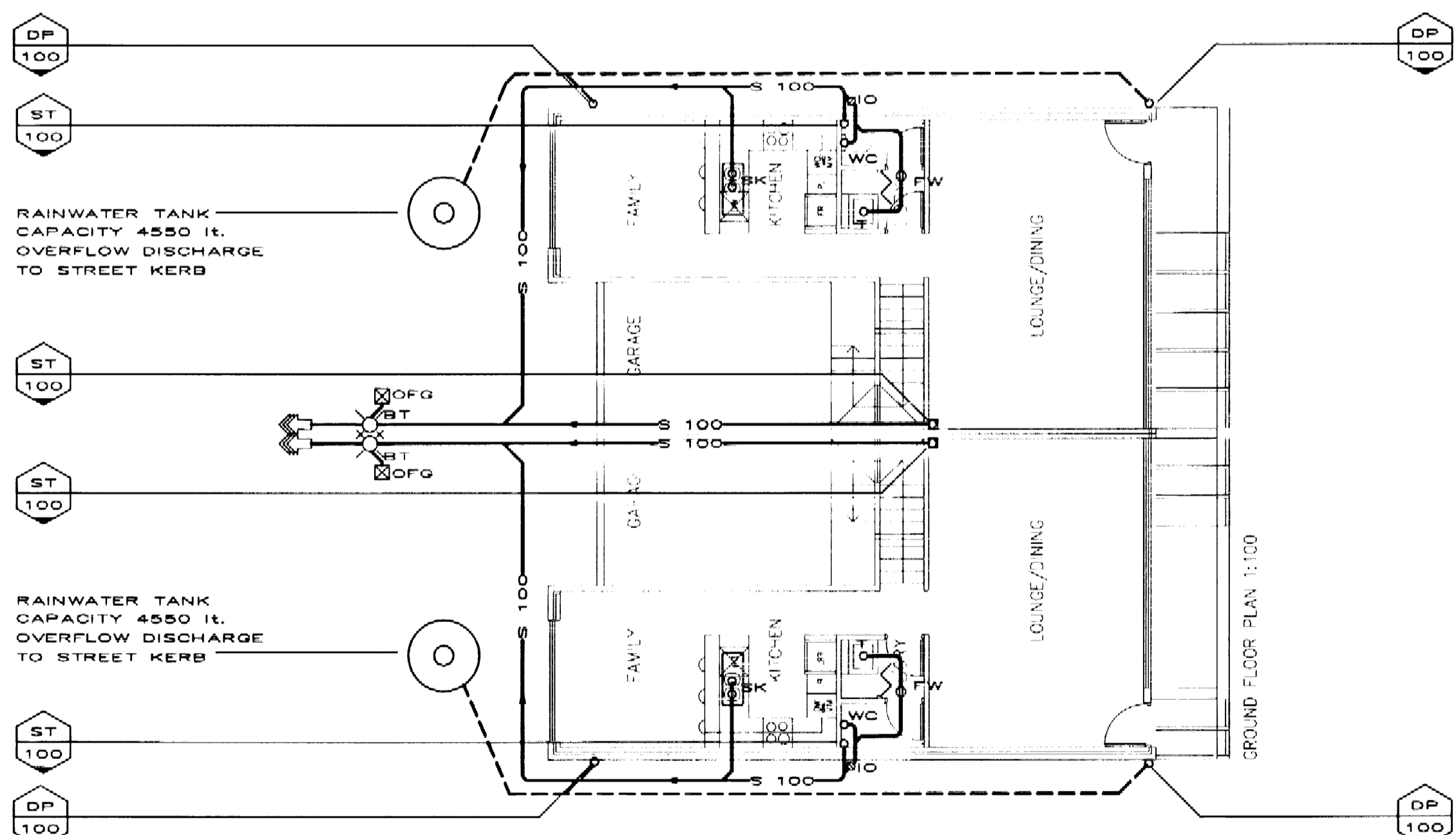
SECTION



FIRST FLOOR PLAN

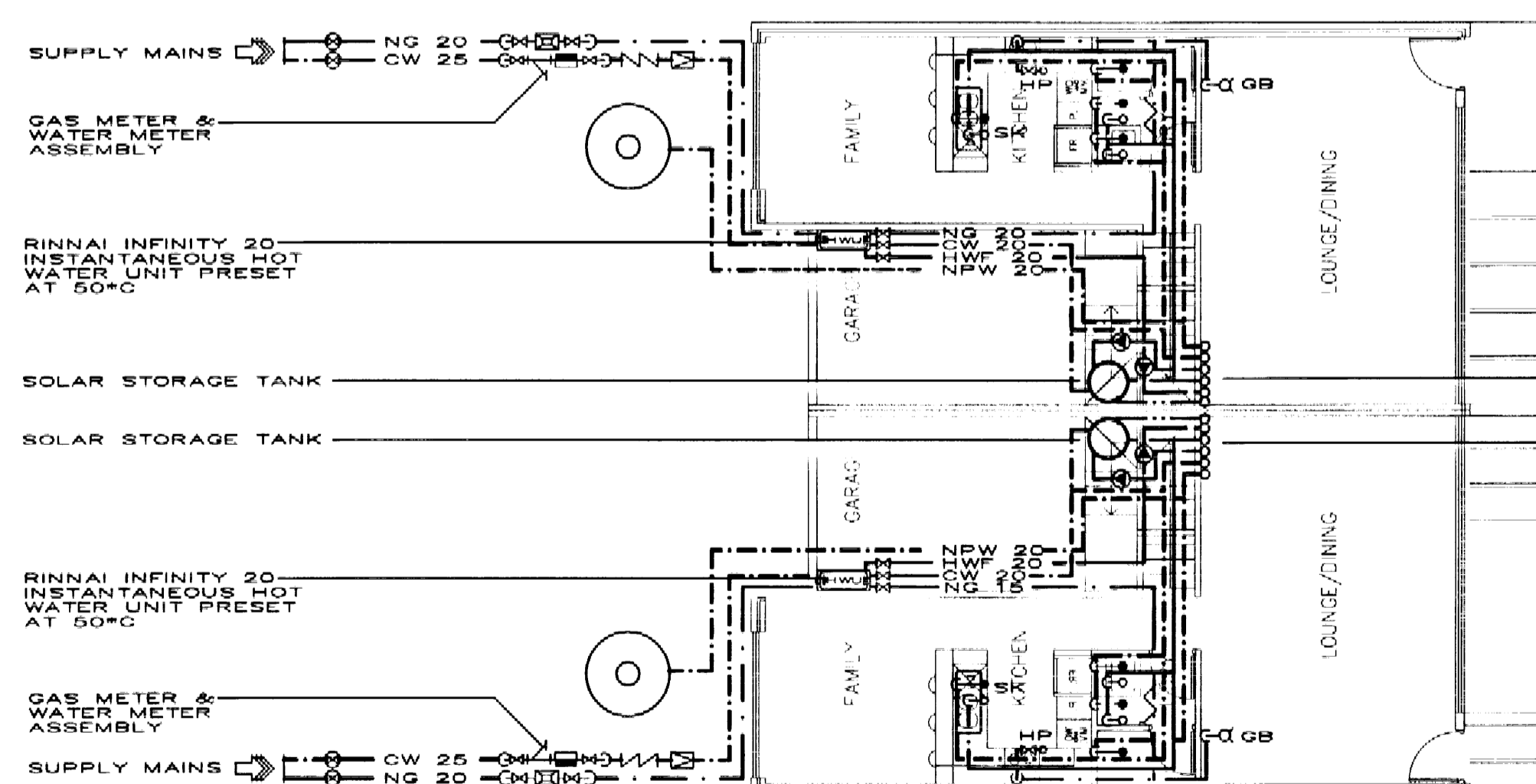


FIRST FLOOR PLAN



GROUND FLOOR PLAN

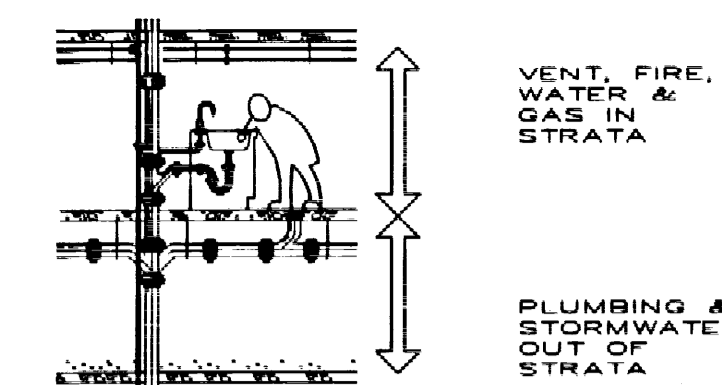
SANITARY PLUMBING DRAINAGE



GROUND FLOOR PLAN

WATER & GAS SERVICES

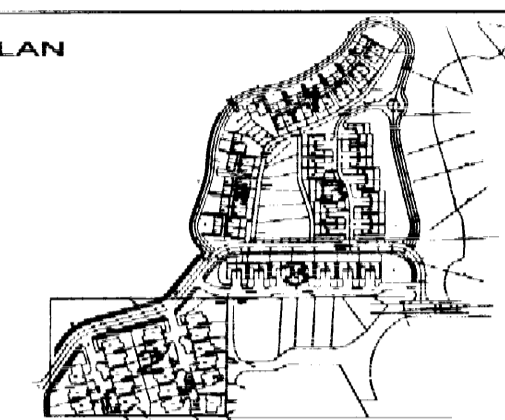
thomsonkane



STRATA ZONES

NOTE:  
• FOR GENERAL NOTES AND LEGEND REFER TO COVER SHEET DH-00

KEY PLAN



P5	REVIEW	AM	AT	20.10.04
P4	REVIEW	AM	AT	10.09.04
P3	REVIEW	AM	AT	10.09.04
P2	REVIEW	AM	AT	12.07.04
P1	PRELIMINARY ISSUE	AM	AT	17.05.04
REV	ISSUE	BY	CHKD	DATE

SCHEDULE OF REFERENCE FILES			TK QA SYSTEM
DISCIPLINE	DRG NO.	REV	REASON FOR ISSUE
ARCHITECTURAL	PLANS Oct. 04		AUTHORISATION
STRUCTURAL			BY:
MECHANICAL			VERIFICATION OF LATEST AMENDMENT
ELECTRICAL			BY:
CIVIL	PLANS 27.09.04		

HYDRAULIC ENGINEERS:  
**thomsonkane**  
Consulting Hydraulic and Fire Engineers  
281 Pacific Highway, North Sydney NSW 2060  
Phone: (02) 9955 0780 Fax: (02) 9954 5532  
Email: tk@thomsonkane.com.au  
WWW.THOMSONKANE.COM.AU  
ACN 109 803 949  
THIS DRAWING IS COPYRIGHT ©

ARCHITECTS:  
**Denis Leech Associates P/L**  
350 George Street, Sydney NSW 2000  
Tel: (02) 9997 7288 Fax: (02) 9997 3164

MASTER PLANNING:  
**Wolski, Lyncenko & Brechnock**  
115 Military Road, Neutral Bay NSW 2089  
Tel: (02) 9953 8477 Fax: (02) 9953 8557

ELECTRICAL:  
**Barry Webb & Associates P/L**  
37 Ryde Road, Pymble NSW 2073  
Tel: (02) 9418 1444 Fax: (02) 9418 1191

ENVIRONMENTAL:  
**WP Brown & Partners Pty Ltd**  
Level 2, 82 Waterloo Road  
Macquarie Park NSW 2113  
Tel: (02) 9900 1000 Fax: (02) 9900 1099

LANDSCAPE:  
**Place Planning & Design P/L**  
Suite 10, Narberry Terrace, 177 Pacific Hwy  
North Sydney NSW 2060  
Tel: (02) 9959 5021 Fax: (02) 9959 5802

PROJECT:  
**PROPOSED RESIDENTIAL SUBDIVISION - 5 WARRIEWOOD VALLEY, WARRIEWOOD NSW**

TITLE: HYDRAULIC SERVICES  
**TYPICAL HOUSE TYPE 3 SEWER, WATER & GAS**

SCALE:	1:100	PROJECT No:	4733-1H	CAD REF:	T:TKNEW/
DATE:	JULY '04	DRAWING NUMBER:	H-09	REVISION:	P5
DRAWN BY:					
CHKD BY:	AT				