

Landscape Referral Response

Application Number:	DA2023/1536
Date:	01/05/2024
Proposed Development:	Alterations and additions to a Place of Public Worship (Bahai Temple)
Responsible Officer:	Olivia Ramage
Land to be developed (Address):	Part Lot 52 DP 1152609 , 173 Mona Vale Road INGLESIDE NSW 2101

Reasons for referral

This application seeks consent for the following:

- Construction / development works within 5 metres of a tree or
- New residential works with three or more dwellings. (RFB's, townhouses, seniors living, guesthouses, etc). or
- Mixed use developments containing three or more residential dwellings.
- New Dwellings or

Officer comments

The proposal is supported with regard to landscape issues.

Additional Information Comment 01/05/24:

The amended AIA is noted.

The amended AIA identified 13 trees of which one tree, tree 1, requires removal. No concerns are raised with the removal of tree 1 as it is an exempt species which can be managed or removed at the discretion of the applicant without consent. All other trees will be retained. As recommended in the AIA a Project Arborist must be engaged to supervise works in tree protection zones. Landscape Referral supports the specific tree protection requirements for endangered trees 12 and 13 as outlined in the AIA.

The landscape planting proposal is generally supported and all planting shall be installed in accordance with the requirements outlined in the conditions of consent.

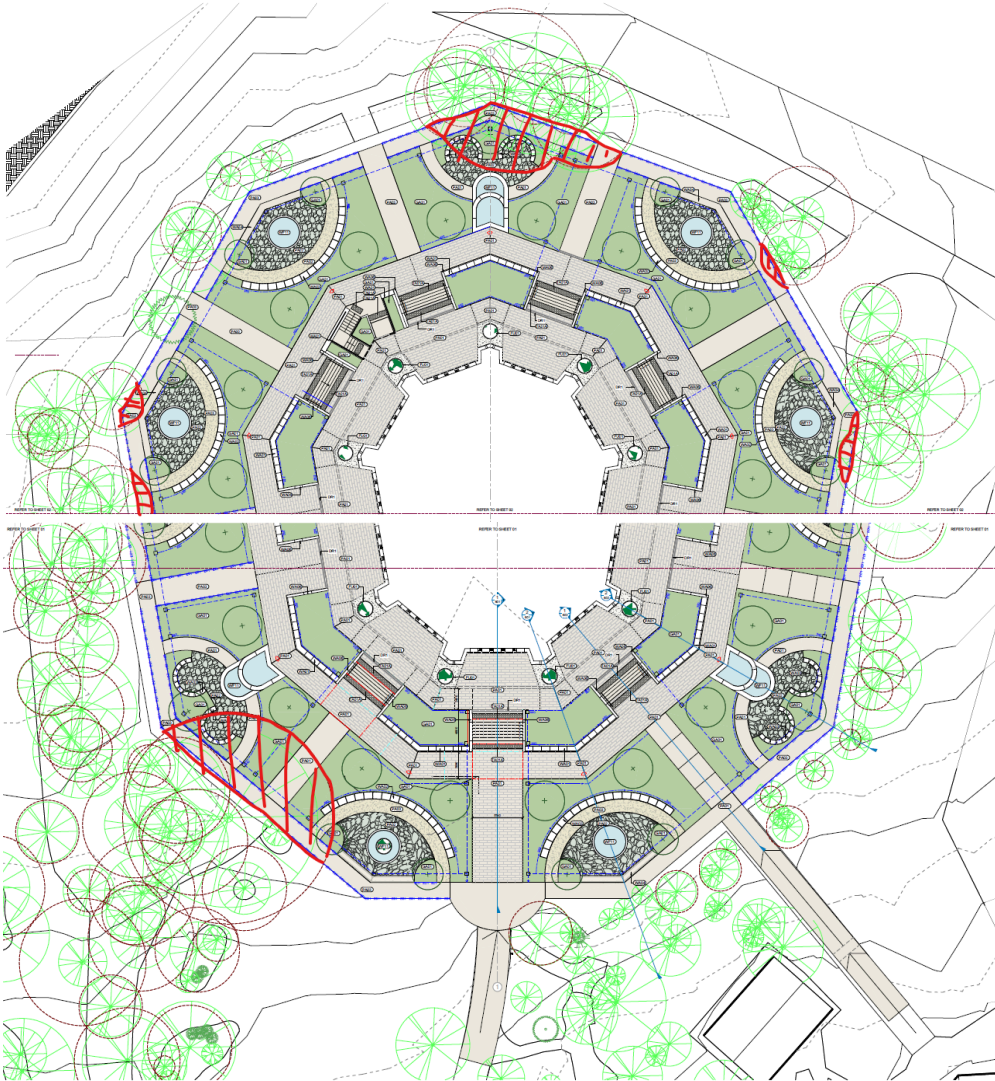
Additional Information Comment 26/02/24:

The Arboricultural Impact Assessment (AIA) is noted.

Impact assessment is required for all trees within 5 metres of the proposed works. Many trees may suffer tree protection zone encroachment which has not been identified or discussed in the AIA. These works include, but are not limited to, fill (and associated batters as seen in section 2 and 4), construction of paths, construction of walls, stormwater drainage lines etc. The Arborist shall assess the impact to all trees within 5 metres of the works and provide comments so the appropriate tree protection measures can be implemented. If the Arborist does note foresee any impact to these trees,

this shall be outlined in the AIA.

For example (potential tree protection zone encroachment areas):



Landscape Referral can continue their assessment upon receipt of further information.

Original Comment:

Works are proposed within 5 metres of existing trees. Northern Beaches Council's Development Application Lodgement Requirements outlines that any works within 5 metres of existing trees, irrespective of property boundaries, requires the submission of an Arboricultural Impact Assessment. An Arboricultural Impact Assessment, prepared by an Arborist with minimum AQF Level 5 in arboriculture, is required to determine the existing trees significance, what impact the proposed works will have to existing trees and the appropriate tree protection measures.

The proposal is therefore supported.

Note: Should you have any concerns with the referral comments above, please discuss these with the Responsible Officer.

Recommended Landscape Conditions:

CONDITIONS THAT MUST BE ADDRESSED PRIOR TO ANY COMMENCEMENT

Project Arborist

- a) a Project Arborist with minimum AQF Level 5 in arboriculture shall be engaged prior to any commencement of works on site to provide tree protection measures in accordance with AS 4970-2009 Protection of trees on development sites, and any recommendations of an approved Arboricultural Impact Assessment.
- b) the Project Arborist shall be in attendance and supervise all works as nominated in the Arboricultural Impact Assessment, and in particular:
- i) tree protection measures and works under sections 6 Tree Protection Plan, 7 Tree Management Plan and 8 Conclusions,
 - ii) specific protection requirements for trees 12 and 13.
- c) All tree protection measures specified must:
- i) be in place before work commences on the site, and
 - ii) be maintained in good condition during the construction period, and
 - iii) remain in place for the duration of the construction works.
- d) the Project Arborist shall provide certification to the Certifier that all tree protection measures under AS 4970-2009 have been satisfied, and the recommendations listed for the protection of the existing tree(s) have been carried out satisfactorily to ensure no impact to the health of the tree(s). Photographic documentation of the condition of all trees to be retained shall be recorded, including at commencement, during the works and at completion.

Note: any potential impact to trees as assessed by the Project Arborist will require redesign of any approved component to ensure existing trees upon the subject site and adjoining properties are preserved and shall be the subject of a modification application where applicable.

Reason: Tree protection.

CONDITIONS TO BE COMPLIED WITH DURING DEMOLITION AND BUILDING WORK

Tree and Vegetation Protection

- a) existing trees and vegetation shall be retained and protected, including:
- i) all trees within the site not approved for removal, including trees and vegetation nominated for retention on the approved Plans,
 - ii) all trees and vegetation located on adjoining properties,
 - iii) all trees and vegetation within the road reserve.
- b) tree protection shall be undertaken as follows:
- i) tree protection shall be in accordance with AS 4970-2009 Protection of trees on development sites, and any recommendations of an approved Arboricultural Impact Assessment,
 - ii) existing ground levels shall be maintained within the tree protection zone of trees to be retained, unless authorised by an Arborist/Project Arborist with minimum AQF Level 5 in arboriculture,
 - iii) removal of existing tree roots at or >25mm (Ø) diameter is not permitted without consultation with an Arborist/Project Arborist with minimum AQF Level 5 in arboriculture,
 - iv) no excavated material, building material storage, site facilities, nor landscape materials are to be placed within the canopy dripline of trees and other vegetation required to be retained,
 - v) structures are to bridge tree roots at or >25mm (Ø) diameter unless directed by an Arborist/Project

Arborist with minimum AQF Level 5 in arboriculture on site,

- vi) excavation for stormwater lines and all other utility services is not permitted within the tree protection zone, without consultation with an Arborist/Project Arborist with minimum AQF Level 5 in arboriculture including advice on root protection measures,
- vii) should either or all of v) or vi) occur during site establishment and construction works, an Arborist/Project Arborist with minimum AQF Level 5 in arboriculture shall provide recommendations for tree protection measures. Details including photographic evidence of works undertaken shall be submitted by the Arborist/Project Arborist to the Principal Certifier,
- viii) any temporary access to, or location of scaffolding within the tree protection zone of a protected tree or any other tree to be retained during the construction works is to be undertaken using the protection measures specified in sections 4.5.3 and 4.5.6 of AS 4970-2009 Protection of trees on development sites,
- ix) the activities listed in section 4.2 of AS 4970-2009 Protection of trees on development sites, shall not occur within the tree protection zone of any tree on the lot or any tree on an adjoining site,
- x) tree pruning from within the site to enable approved works shall not exceed 10% of any tree canopy, and shall be in accordance with AS 4373-2007 Pruning of amenity trees,
- xi) the tree protection measures specified in this clause must: be in place before work commences on the site, be maintained in good condition during the construction period, and remain in place for the duration of the construction works.

c) the Principal Certifier must ensure that:

- i) If activated, the arboricultural works listed in a) and b) are undertaken and certified by an Arborist/Project Arborist as compliant to AS 4970-2009 Protection of trees on development sites, and any recommendations of an approved Arboricultural Impact Assessment.

Reason: Tree and vegetation protection.

Condition of Trees

a) during the construction period the applicant is responsible for ensuring all existing trees required to be retained are maintained in a healthy and vigorous condition. This is to be done by ensuring that all identified tree protection measures are adhered to, or by seeking arboricultural advice from an Arborist/Project Arborist with minimum AQF Level 5 in arboriculture during the works. In this regard all protected trees shall not exhibit:

- i) a general decline in health and vigour,
- ii) damaged, crushed or dying roots due to poor pruning techniques,
- iii) more than 10% loss or dieback of roots, branches and foliage,
- iv) mechanical damage or bruising of bark and timber of roots, trunk and branches,
- v) yellowing of foliage or a thinning of the canopy untypical of its species,
- vi) an increase in the amount of deadwood not associated with normal growth,
- vii) an increase in kino or gum exudation,
- viii) inappropriate increases in epicormic growth that may indicate that the plants are in a stressed condition,
- ix) branch drop, torn branches and stripped bark not associated with natural climatic conditions.

b) any mitigating measures and recommendations required by the Arborist/Project Arborist are to be implemented.

c) the owner of the adjoining allotment of land is not liable for the cost of work carried out for the purpose of this clause.

Reason: Protection of trees.

CONDITIONS WHICH MUST BE COMPLIED WITH PRIOR TO THE ISSUE OF THE OCCUPATION CERTIFICATE

Landscape Completion

- a) landscape works are to be implemented in accordance with the approved Landscape Plan(s) (drawing 501 and 502 by Urbis dated 02/08/2023 and 23/06/2023 respectively), and inclusive of the following conditions:
- i) landscape works are to be contained within the legal property boundaries,
 - ii) planting shall be installed as indicated on the approved Landscape Plan(s) unless otherwise imposed by any conditions,
 - iii) all tree planting shall be a minimum pre-ordered planting size of 75 litres or as otherwise scheduled if greater in size; meet the requirements of Natspec - Specifying Trees; planted into a prepared planting hole 1m x 1m x 600mm depth generally, backfilled with a sandy loam mix or approved similar, mulched to 75mm depth minimum and maintained, and watered until established; and shall be located either within garden bed or within a prepared bed within lawn,
 - iv) mass planting shall be installed in a garden bed prepared with a suitable free draining soil mix and minimum 75mm depth of mulch,
 - v) where the property is certified Bush Fire Prone Land, any new planting may be managed in accordance with Planning for Bushfire Protection 2019.
- b) prior to the issue of an Occupation Certificate, details (from a landscape architect, landscape designer or qualified horticulturalist) shall be submitted to the Principal Certifier, certifying that the landscape works have been completed in accordance with any conditions of consent.

Reason: Environmental amenity.

Condition of Retained Vegetation

- a) prior to the issue of an Occupation Certificate, a report prepared by an Arborist/Project Arborist with minimum AQF Level 5 in arboriculture shall be submitted to the Principal Certifier, assessing the health and impact on all existing trees required to be retained on the approved Plans or as listed in the Arboricultural Impact Assessment, including the following information:
- i) compliance to any Arborist recommendations for tree protection generally and during excavation works,
 - ii) extent of damage sustained by vegetation as a result of the construction works,
 - iii) any subsequent remedial works required to ensure the long term retention of the vegetation.

Reason: Tree and vegetation protection.

ON-GOING CONDITIONS THAT MUST BE COMPLIED WITH AT ALL TIMES

Landscape Maintenance

- a) if any landscape materials/components or planting under this consent fails, they are to be replaced with similar materials/components.
- b) trees, shrubs and groundcovers required to be planted under this consent are to be mulched, watered and fertilised as required at the time of planting.
- c) if any tree, shrub or groundcover required to be planted under this consent fails, they are to be replaced with similar species to maintain the landscape theme and be generally in accordance with the approved Landscape Plan(s) and any conditions of consent.
- d) the approved landscape planted areas, whether containing lawn, gardens or planters shall in

perpetuity remain as planting under the development consent, and shall not be replaced with any hard paved surfaces or structures.

Reason: To maintain local environmental amenity.