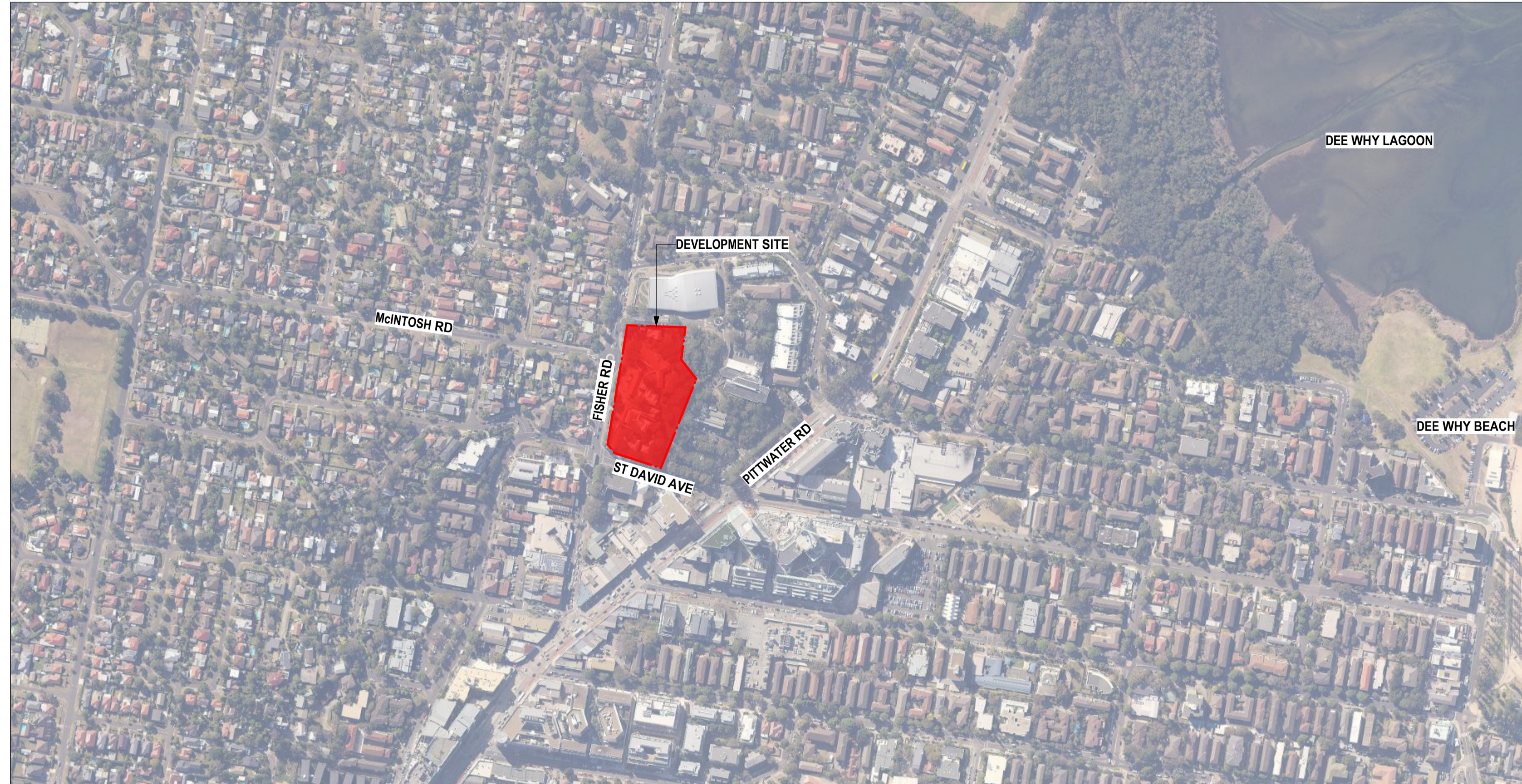


# 23 FISHER RD, DEE WHY

## SECTION 4.55



DRAWING NUMBER	DRAWING TITLE	REVISION
L_0001	COVER SHEET	A
L_1001	GENERAL ARRANGEMENT	A
L_4001	LANDSCAPE PLAN	A
L_4002	LANDSCAPE PLAN	A
L_4003	LANDSCAPE PLAN	A
L_4004	LANDSCAPE PLAN	A

**NOTE:**  
 VERIFY ALL DIMENSIONS ON SITE BEFORE COMMENCING WORK. REPORT ALL DISCREPANCIES TO LANDSCAPE ARCHITECT PRIOR TO CONSTRUCTION. FIGURED DIMENSIONS TO BE TAKEN IN PREFERENCE TO SCALED DRAWINGS. DRAWINGS MADE TO LARGER SCALES AND THOSE SHOWING PARTICULAR PARTS OF THE WORKS SHALL TAKE PRECEDENCE OVER DRAWINGS MADE TO SMALLER SCALE AND THOSE FOR GENERAL PURPOSES. ALL WORK IS TO CONFORM TO RELEVANT AUSTRALIAN STANDARDS AND OTHER CODES AS APPLICABLE, TOGETHER WITH OTHER AUTHORITIES' REQUIREMENTS AND REGULATIONS. DESIGN DRAWINGS BY OTHER DISCIPLINES HAVE BEEN INCLUDED FOR COORDINATION ONLY. THIS DRAWING AND DESIGN IS SUBJECT TO COPYRIGHT AND MAY NOT BE REPRODUCED WITHOUT PRIOR WRITTEN CONSENT. IF IN DOUBT, ASK.

**NOT FOR CONSTRUCTION**

ISSUE	DESCRIPTION	BY	APPD	DATE
A	SECTION 4.55	TC	SW	17/12/2020

NORTH / SCALE  
 Scale: NTS

PROJECT TEAM  
 ARCHITECT  
**GILES TRIBE ARCHITECTS**  
 Level 1, 1 Chandos Street, St Leonards NSW 2065  
 Telephone: (02) 9264 5005

ARBORIST  
**BLUEGUM**  
 21 Belbuna Avenue, Avalon NSW 2107  
 Telephone: 0431 286 080

LANDSCAPE ARCHITECT  
**CONTEXT**  
 LANDSCAPE ARCHITECTURE  
 Context Landscape Design Pty Ltd  
 Level 2, 52-58 William Street, East Sydney NSW 2011  
 PO Box A869, Sydney South NSW 1235  
 T. 61 2 8244 8900 W. www.context.net.au  
 ABN: 14 093 350 719

CLIENT NAME  
**ROSE GROUP**

PROJECT  
 23 FISHER RD, DEE WHY  
 23 FISHER RD, DEE WHY NSW 2099

DRAWING TITLE  
**COVER SHEET**

PROJECT STAGE  
 SECTION 4.55

PROJECT NUMBER  
**18515**

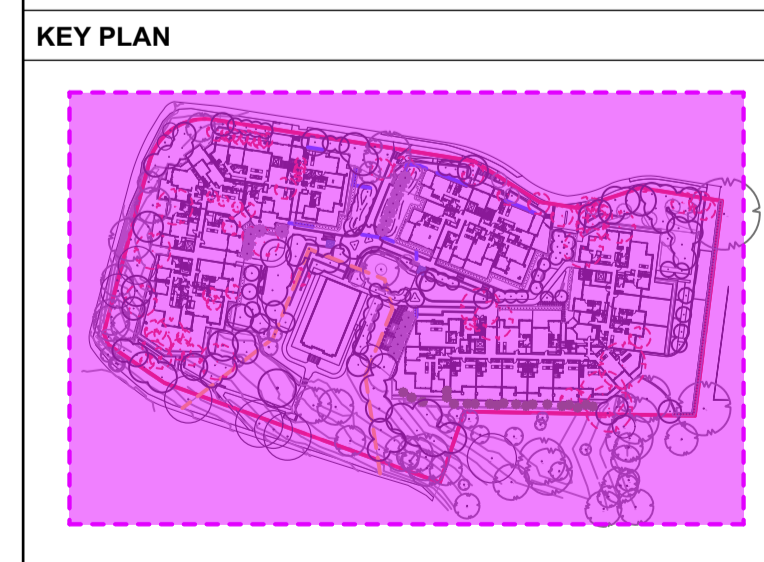
SHEET SIZE  
**A1**

DRAWING NUMBER  
**L\_0001**

ISSUE  
**A**



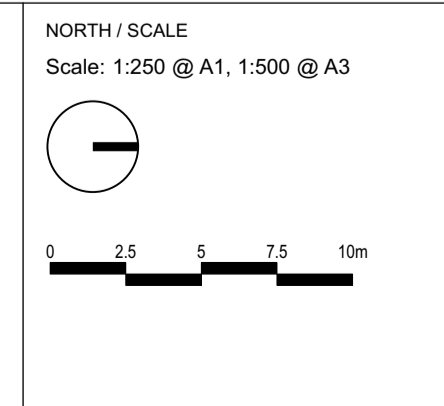
- LEGEND**
- SITE BOUNDARY
  - EXTENT OF PODIUM SLAB
  - HERITAGE CURTLAGE
  - NATIVE EXISTING TREE TO BE RETAINED  
REFER TO ARBORIST REPORT
  - EXOTIC EXISTING TREE TO BE RETAINED  
REFER TO ARBORIST REPORT
  - EXISTING TREE  
REFER TO ARBORIST REPORT
  - Angophora costata*
  - Araucaria heterophylla*
  - Backhousia citrifolia*
  - Banksia serrata*
  - Buckinghamia celsissima*
  - Ceratopetalum gummiferum*
  - Corymbia gummifera*
  - Cyathia australis*
  - Elaeocarpus reticulatus*
  - Eucalyptus haemastoma*
  - Eucalyptus piperita*
  - Flindersia australis*
  - Glochidion ferdinandi*
  - Homalanthus populifolius*
  - Hymenosporum flavum*
  - Livistona australis*
  - Syncarpia glomulifera*
  - SCREENING / HEDGING PLANTING  
REFER TO PLANT SCHEDULE
  - COMMUNITY PARKLAND PLANTING  
REFER TO PLANT SCHEDULE
  - NORTHERN BUSHLAND PLANTING  
REFER TO PLANT SCHEDULE
  - FISHER ROAD FRONTAGE PLANTING  
REFER TO PLANT SCHEDULE
  - SOUTHERNEASTERN BUSHLAND PLANTING  
REFER TO PLANT SCHEDULE
  - HERITAGE PLANTING  
REFER TO PLANT SCHEDULE
  - PRIVATE OPEN SPACE PLANTING  
REFER TO PLANT SCHEDULE
  - LAWN  
REFER TO PLANT SCHEDULE
  - LOCALISED MOUNDING
  - WASHED CONCRETE FOOTPATH  
TO FUTURE DETAIL
  - CONCRETE DRIVEWAY  
TO FUTURE DETAIL
  - EXISTING CONCRETE PATH
  - UNIT PAVING TO FUTURE DETAIL
  - NEW RETAINING WALL TO FUTURE DETAIL
  - EXISTING RETAINING WALL
  - SANDSTONE OUTCROPS
  - PLATFORM LIFT  
TO FUTURE DETAIL
  - FURNITURE  
TO FUTURE DETAIL



**NOTE:**  
VERIFY ALL DIMENSIONS ON SITE BEFORE COMMENCING WORK. REPORT ALL DISCREPANCIES TO LANDSCAPE ARCHITECT PRIOR TO CONSTRUCTION. FIGURED DIMENSIONS TO BE TAKEN IN PREFERENCE TO SCALED DRAWINGS. DRAWINGS MADE TO LARGER SCALES AND THOSE SHOWING PARTICULAR PARTS OF THE WORKS SHALL TAKE PRECEDENCE OVER DRAWINGS MADE TO SMALLER SCALE AND THOSE FOR GENERAL PURPOSES. ALL WORK IS TO CONFORM TO RELEVANT AUSTRALIAN STANDARDS AND OTHER CODES AS APPLICABLE, TOGETHER WITH OTHER AUTHORITIES' REQUIREMENTS AND REGULATIONS. DESIGN DRAWINGS BY OTHER DISCIPLINES HAVE BEEN INCLUDED FOR COORDINATION ONLY. THIS DRAWING AND DESIGN IS SUBJECT TO COPYRIGHT AND MAY NOT BE REPRODUCED WITHOUT PRIOR WRITTEN CONSENT. IF IN DOUBT, ASK.

**NOT FOR CONSTRUCTION**

ISSUE	DESCRIPTION	BY	APPD	DATE
A	SECTION 4.55	TC	SW	17/12/2020



**PROJECT TEAM**

**ARCHITECT**  
GILES TRIBE ARCHITECTS  
Level 1, 1 Chandos Street, St Leonards NSW 2065  
Telephone: (02) 9264 5005

**ARBORIST**  
BLUEGUM  
21 Britomae Avenue, Avalon NSW 2107  
Telephone: 0431 286 080

**LANDSCAPE ARCHITECT**

**CONTEXT**  
LANDSCAPE ARCHITECTURE

Context Landscape Design Pty Ltd  
Level 2, 52-58 William Street, East Sydney NSW 2011  
PO Box A868, Sydney, South NSW 1235  
T. 61 2 8244 8900 W. www.context.net.au  
ABN: 14 093 350 719

**CLIENT NAME**  
ROSE GROUP

**PROJECT**  
23 FISHER RD, DEE WHY  
23 FISHER RD, DEE WHY NSW 2099

**DRAWING TITLE**  
CONCEPT MASTERPLAN

**PROJECT STAGE**  
SECTION 4.55

**SHEET SIZE**  
A1

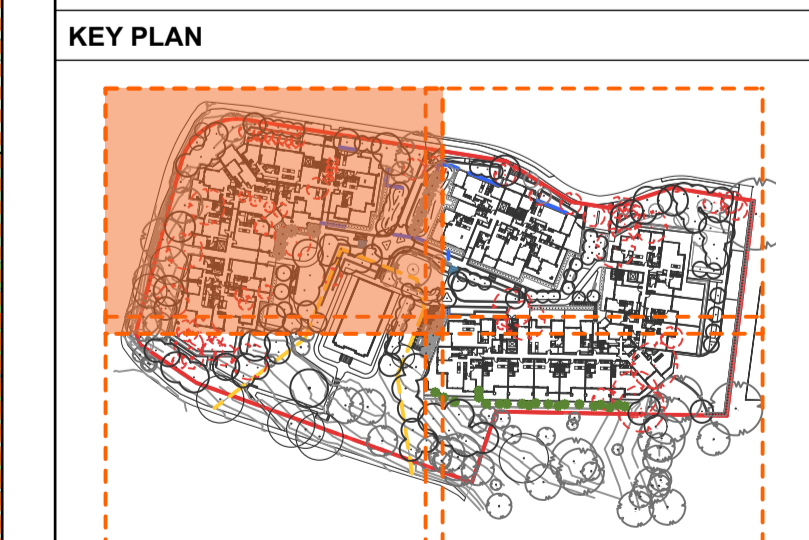
**PROJECT NUMBER**  
18515

**DRAWING NUMBER**  
L\_1001

**ISSUE**  
A

REFER TO SHEET L\_4002

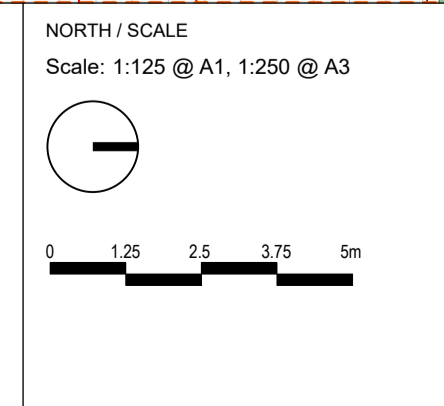
- ### LEGEND
- SITE BOUNDARY
  - EXTENT OF PODIUM SLAB
  - HERITAGE CURTLAGE
  - EXISTING / PROPOSED LEVELS
  - NATIVE EXISTING TREE TO BE RETAINED  
REFER TO ARBORIST REPORT
  - EXOTIC EXISTING TREE TO BE RETAINED  
REFER TO ARBORIST REPORT
  - EXISTING TREE  
REFER TO ARBORIST REPORT
  - Angophora costata*
  - Araucaria heterophylla*
  - Banksia serrata*
  - Buckinghamia celsissima*
  - Ceratopetalum gummiferum*
  - Corymbia gummifera*
  - Cyathia australis*
  - Elaeocarpus reticulatus*
  - Eucalyptus haemastoma*
  - Eucalyptus piperita*
  - Flindersia australis*
  - Glochidion ferdinandi*
  - Homalanthus populifolius*
  - Hymenosporum flavum*
  - Livistona australis*
  - Syncarpia glomulifera*
  - SCREENING / HEDGING PLANTING
  - COMMUNITY PARKLAND PLANTING  
REFER TO PLANT SCHEDULE
  - NORTHERN BUSHLAND PLANTING  
REFER TO PLANT SCHEDULE
  - FISHER ROAD FRONTAGE PLANTING  
REFER TO PLANT SCHEDULE
  - SOUTHERNEASTERN BUSHLAND PLANTING  
REFER TO PLANT SCHEDULE
  - HERITAGE PLANTING  
REFER TO PLANT SCHEDULE
  - PRIVATE OPEN SPACE PLANTING  
REFER TO PLANT SCHEDULE
  - LAWN  
REFER TO PLANT SCHEDULE
  - LOCALISED MOUNDING
  - WASHED CONCRETE FOOTPATH  
TO FUTURE DETAIL
  - CONCRETE DRIVEWAY  
TO FUTURE DETAIL
  - EXISTING CONCRETE PATH
  - UNIT PAVING TO FUTURE DETAIL
  - NEW RETAINING WALL TO FUTURE DETAIL
  - EXISTING RETAINING WALL
  - SANDSTONE OUTCROPS
  - PLATFORM LIFT  
TO FUTURE DETAIL
  - FURNITURE  
TO FUTURE DETAIL



NOTE: VERIFY ALL DIMENSIONS ON SITE BEFORE COMMENCING WORK. REPORT ALL DISCREPANCIES TO LANDSCAPE ARCHITECT PRIOR TO CONSTRUCTION. FIGURED DIMENSIONS TO BE TAKEN IN PREFERENCE TO SCALED DRAWINGS. DRAWINGS MADE TO LARGER SCALES AND THOSE SHOWING PARTICULAR PARTS OF THE WORKS SHALL TAKE PRECEDENCE OVER DRAWINGS MADE TO SMALLER SCALE. AND THOSE FOR GENERAL PURPOSES. ALL WORK IS TO CONFORM TO RELEVANT AUSTRALIAN STANDARDS AND OTHER CODES AS APPLICABLE, TOGETHER WITH OTHER AUTHORITIES' REQUIREMENTS AND REGULATIONS. DESIGN DRAWINGS BY OTHER DISCIPLINES HAVE BEEN INCLUDED FOR COORDINATION ONLY. THIS DRAWING AND DESIGN IS SUBJECT TO COPYRIGHT AND MAY NOT BE REPRODUCED WITHOUT PRIOR WRITTEN CONSENT. IF IN DOUBT, ASK.

**NOT FOR CONSTRUCTION**

ISSUE	DESCRIPTION	BY	APPROV	DATE
A	SECTION 4.55	TC	SW	17/12/2020



**PROJECT TEAM**

**ARCHITECT**  
GILES TRIBE ARCHITECTS  
Level 1, 1 Chandos Street, St Leonards NSW 2005  
Telephone: (02) 9254 5005

**ARBORIST**  
BLUEGUM  
21 Belconnia Avenue, Avalon NSW 2107  
Telephone: 0431 286 080

**LANDSCAPE ARCHITECT**

**CONTEXT**  
LANDSCAPE ARCHITECTURE

Context Landscape Design Pty Ltd  
Level 2, 52-58 William Street, East Sydney NSW 2011  
PO Box A869, Sydney South NSW 1235  
T. 61 2 8244 8500 W. www.context.net.au  
ABN: 14 093 350 719

**CLIENT NAME**  
ROSE GROUP

**PROJECT**  
23 FISHER RD, DEE WHY  
23 FISHER RD, DEE WHY NSW 2099

**DRAWING TITLE**  
DETAIL PLAN

**PROJECT STAGE**  
SECTION 4.55

**PROJECT NUMBER**  
18515

**DRAWING NUMBER**  
L\_4001

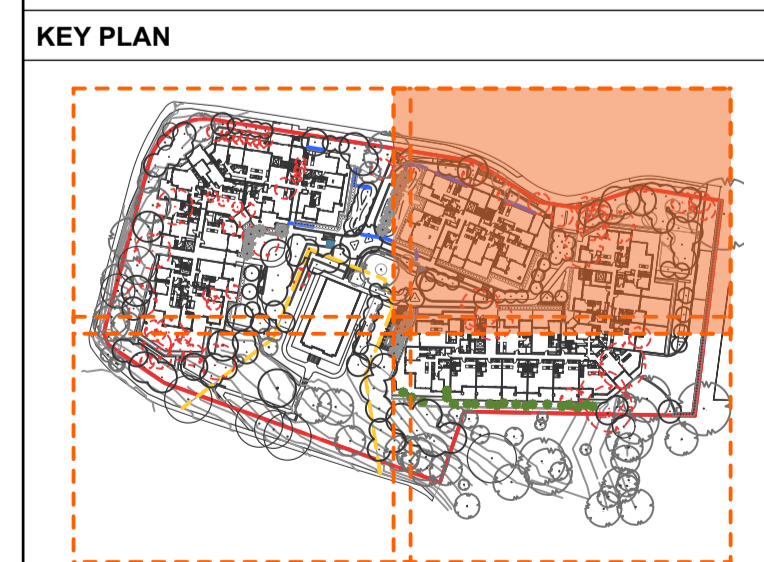
**ISSUE**  
A

**SHEET SIZE**  
A1

REFER TO SHEET L\_4001

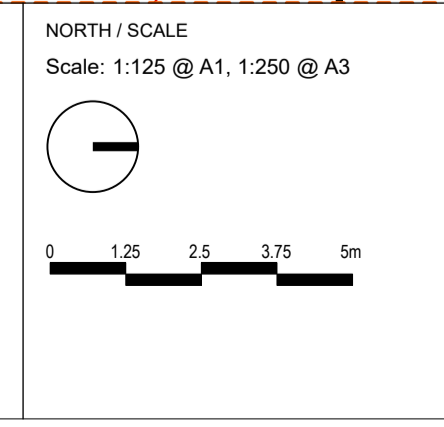


- LEGEND**
- SITE BOUNDARY
  - EXTENT OF PODIUM SLAB
  - HERITAGE CURTILAGE
  - EXISTING / PROPOSED LEVELS
  - NATIVE EXISTING TREE TO BE RETAINED  
REFER TO ARBORIST REPORT
  - EXOTIC EXISTING TREE TO BE RETAINED  
REFER TO ARBORIST REPORT
  - EXISTING TREE  
REFER TO ARBORIST REPORT
  - Angophora costata*
  - Araucaria heterophylla*
  - Backhousia citrifolia*
  - Banksia serrata*
  - Buckinghamia celsissima*
  - Ceratopetalum gummiferum*
  - Corymbia gummifera*
  - Cyathea australis*
  - Elaeocarpus reticulatus*
  - Eucalyptus haemastoma*
  - Eucalyptus piperita*
  - Flindersia australis*
  - Glochidion ferdinandi*
  - Homalanthus populifolius*
  - Hymenosporum flavum*
  - Livistona australis*
  - Syncarpia glomulifera*
  - SCREENING / HEDGING PLANTING  
REFER TO PLANT SCHEDULE
  - COMMUNITY PARKLAND PLANTING  
REFER TO PLANT SCHEDULE
  - NORTHERN BUSHLAND PLANTING  
REFER TO PLANT SCHEDULE
  - FISHER ROAD FRONTAGE PLANTING  
REFER TO PLANT SCHEDULE
  - SOUTHERNEASTERN BUSHLAND PLANTING  
REFER TO PLANT SCHEDULE
  - HERITAGE PLANTING  
REFER TO PLANT SCHEDULE
  - PRIVATE OPEN SPACE PLANTING  
REFER TO PLANT SCHEDULE
  - LAWN  
REFER TO PLANT SCHEDULE
  - LOCALISED MOUNDING
  - WASHED CONCRETE FOOTPATH  
TO FUTURE DETAIL
  - CONCRETE DRIVEWAY  
TO FUTURE DETAIL
  - EXISTING CONCRETE PATH
  - UNIT PAVING TO FUTURE DETAIL
  - NEW RETAINING WALL TO FUTURE DETAIL
  - EXISTING RETAINING WALL
  - SANDSTONE OUTCROPS
  - PLATFORM LIFT  
TO FUTURE DETAIL
  - FURNITURE  
TO FUTURE DETAIL



**NOT FOR CONSTRUCTION**

ISSUE	DESCRIPTION	BY	APPD	DATE
A	SECTION 4.55	TC	SW	17/12/2020



**PROJECT TEAM**

**ARCHITECT**  
GILES TRIBE ARCHITECTS  
Level 1, 1 Chandos Street, St Leonards NSW 2005  
Telephone: (02) 9264 5005

**ARBORIST**  
BLUEGUM  
Level 1, 21 Belmore Avenue, Avalon NSW 2107  
Telephone: 0431 286 080

**LANDSCAPE ARCHITECT**

**CONTEXT**  
LANDSCAPE ARCHITECTURE

Context Landscape Design Pty Ltd  
Level 2, 52-58 William Street, East Sydney NSW 2011  
PO Box 4868, Sydney South NSW 1235  
T. 61 2 8244 8900 W. www.context.net.au  
ABN: 14 093 350 719

**CLIENT NAME**  
ROSE GROUP

**PROJECT**  
23 FISHER RD, DEE WHY  
23 FISHER RD, DEE WHY NSW 2099

**DRAWING TITLE**  
DETAIL PLAN

**PROJECT STAGE**  
SECTION 4.55

**SHEET SIZE**  
A1

**PROJECT NUMBER**  
18515

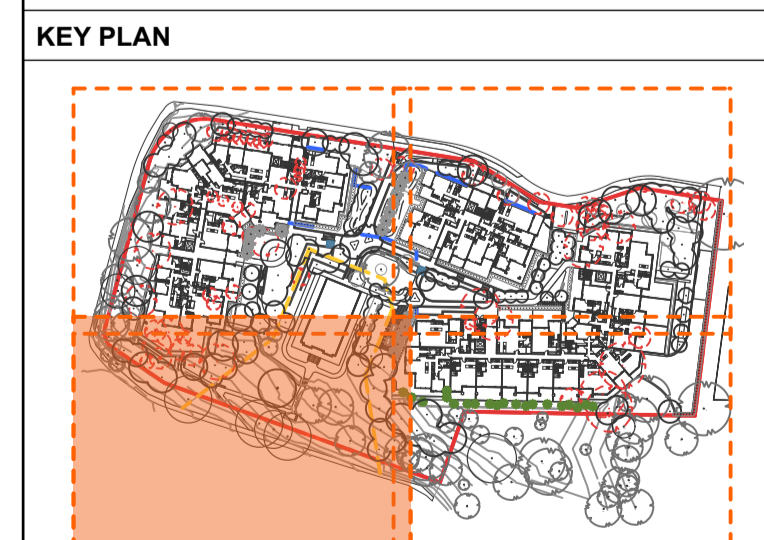
**DRAWING NUMBER**  
L\_4002

**ISSUE**  
A



**LEGEND**

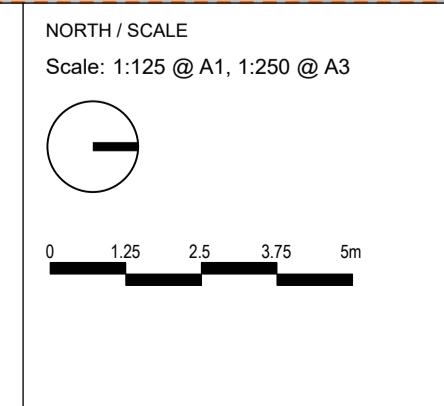
- SITE BOUNDARY
- EXTENT OF PODIUM SLAB
- HERITAGE CURTLAGE
- EXISTING / PROPOSED LEVELS
- NATIVE EXISTING TREE TO BE RETAINED REFER TO ARBORIST REPORT
- EXOTIC EXISTING TREE TO BE RETAINED REFER TO ARBORIST REPORT
- EXISTING TREE REFER TO ARBORIST REPORT
- Angophora costata*
- Araucaria heterophylla*
- Backhousia citriflora*
- Banksia serrata*
- Buckinghamia celsissima*
- Ceratopetalum gummiferum*
- Corymbia gummifera*
- Cyathea australis*
- Elaeocarpus reticulatus*
- Eucalyptus haemastoma*
- Eucalyptus piperita*
- Flindersia australis*
- Glochidion ferdinandi*
- Homalanthus populifolius*
- Hymenosporum flavum*
- Livistona australis*
- Syncarpia glomulifera*
- SCREENING / HEDGING PLANTING
- COMMUNITY PARKLAND PLANTING REFER TO PLANT SCHEDULE
- NORTHERN BUSHLAND PLANTING REFER TO PLANT SCHEDULE
- FISHER ROAD FRONTAGE PLANTING REFER TO PLANT SCHEDULE
- SOUTHERN/EASTERN BUSHLAND PLANTING REFER TO PLANT SCHEDULE
- HERITAGE PLANTING REFER TO PLANT SCHEDULE
- PRIVATE OPEN SPACE PLANTING REFER TO PLANT SCHEDULE
- LAWN REFER TO PLANT SCHEDULE
- LOCALISED MOUNDING
- WASHED CONCRETE FOOTPATH TO FUTURE DETAIL
- CONCRETE DRIVEWAY TO FUTURE DETAIL
- EXISTING CONCRETE PATH
- UNIT PAVING TO FUTURE DETAIL
- NEW RETAINING WALL TO FUTURE DETAIL
- EXISTING RETAINING WALL
- SANDSTONE OUTCROPS
- PLATFORM LIFT TO FUTURE DETAIL
- FURNITURE TO FUTURE DETAIL



**NOTE:**  
VERIFY ALL DIMENSIONS ON SITE BEFORE COMMENCING WORK. REPORT ALL DISCREPANCIES TO LANDSCAPE ARCHITECT PRIOR TO CONSTRUCTION. FIGURED DIMENSIONS TO BE TAKEN IN PREFERENCE TO SCALED DRAWINGS. DRAWINGS MADE TO LARGER SCALES AND THOSE SHOWING PARTICULAR PARTS OF THE WORKS SHALL TAKE PRECEDENCE OVER DRAWINGS MADE TO SMALLER SCALE. AND THOSE FOR GENERAL PURPOSES. ALL WORK IS TO CONFORM TO RELEVANT AUSTRALIAN STANDARDS AND OTHER CODES AS APPLICABLE. TOGETHER WITH OTHER AUTHORITIES' REQUIREMENTS AND REGULATIONS. DESIGN DRAWINGS BY OTHER DISCIPLINES HAVE BEEN INCLUDED FOR COORDINATION ONLY. THIS DRAWING AND DESIGN IS SUBJECT TO COPYRIGHT AND MAY NOT BE REPRODUCED WITHOUT PRIOR WRITTEN CONSENT. IF IN DOUBT, ASK.

**NOT FOR CONSTRUCTION**

ISSUE	DESCRIPTION	BY	APPD	DATE
A	SECTION 4.55	TC	SW	17/12/2020



**PROJECT TEAM**

**ARCHITECT**  
GILES TRIBE ARCHITECTS  
Level 1, 1 Chandos Street, St Leonards NSW 2065  
Telephone: (02) 9264 5005

**ARBORIST**  
BLUEGUM  
21 Belconnen Avenue, Avalon NSW 2107  
Telephone: 0431 286 080

**LANDSCAPE ARCHITECT**

**CONTEXT**  
LANDSCAPE ARCHITECTURE

Context Landscape Design Pty Ltd  
Level 2, 52-58 William Street, East Sydney NSW 2011  
PO Box A868, Sydney South NSW 1235  
T. 61 2 8244 8500 W. www.context.net.au  
ABN: 14 093 350 719

**CLIENT NAME**  
ROSE GROUP

**PROJECT**  
23 FISHER RD, DEE WHY  
23 FISHER RD, DEE WHY NSW 2099

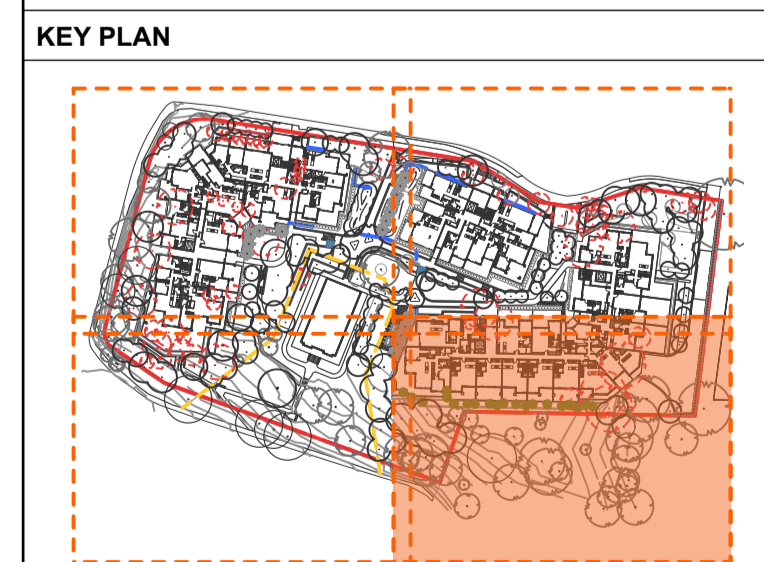
**DRAWING TITLE**  
DETAIL PLAN

PROJECT STAGE SECTION 4.55	SHEET SIZE A1
PROJECT NUMBER 18515	DRAWING NUMBER L_4003
ISSUE A	

REFER TO SHEET L\_4002



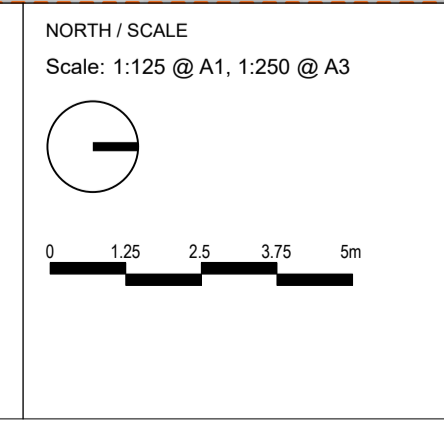
- LEGEND**
- SITE BOUNDARY
  - EXTENT OF PODIUM SLAB
  - HERITAGE CURTLAGE
  - EXISTING / PROPOSED LEVELS
  - NATIVE EXISTING TREE TO BE RETAINED  
REFER TO ARBORIST REPORT
  - EXOTIC EXISTING TREE TO BE RETAINED  
REFER TO ARBORIST REPORT
  - EXISTING TREE  
REFER TO ARBORIST REPORT
  - Angophora costata*
  - Araucaria heterophylla*
  - Backhousia citrifolia*
  - Banksia serrata*
  - Buckinghamia celsissima*
  - Ceratopetalum gummiferum*
  - Corymbia gummifera*
  - Cyathea australis*
  - Elaeocarpus reticulatus*
  - Eucalyptus haemastoma*
  - Eucalyptus piperita*
  - Flindersia australis*
  - Glochidion ferdinandi*
  - Homalanthus populifolius*
  - Hymenosporum flavum*
  - Livistona australis*
  - Syncarpia glomulifera*
  - SCREENING / HEDGING PLANTING
  - COMMUNITY PARKLAND PLANTING  
REFER TO PLANT SCHEDULE
  - NORTHERN BUSHLAND PLANTING  
REFER TO PLANT SCHEDULE
  - FISHER ROAD FRONTAGE PLANTING  
REFER TO PLANT SCHEDULE
  - SOUTHERN/EASTERN BUSHLAND PLANTING  
REFER TO PLANT SCHEDULE
  - HERITAGE PLANTING  
REFER TO PLANT SCHEDULE
  - PRIVATE OPEN SPACE PLANTING  
REFER TO PLANT SCHEDULE
  - LAWN  
REFER TO PLANT SCHEDULE
  - LOCALISED MOUNDING
  - WASHED CONCRETE FOOTPATH  
TO FUTURE DETAIL
  - CONCRETE DRIVEWAY  
TO FUTURE DETAIL
  - EXISTING CONCRETE PATH
  - UNIT PAVING TO FUTURE DETAIL
  - NEW RETAINING WALL  
TO FUTURE DETAIL
  - EXISTING RETAINING WALL
  - SANDSTONE OUTCROPS
  - PLATFORM LIFT  
TO FUTURE DETAIL
  - FURNITURE  
TO FUTURE DETAIL



**NOTE:**  
VERIFY ALL DIMENSIONS ON SITE BEFORE COMMENCING WORK. REPORT ALL DISCREPANCIES TO LANDSCAPE ARCHITECT PRIOR TO CONSTRUCTION. FIGURED DIMENSIONS TO BE TAKEN IN PREFERENCE TO SCALED DRAWINGS. DRAWINGS MADE TO LARGER SCALES AND THOSE SHOWING PARTICULAR PARTS OF THE WORKS SHALL TAKE PRECEDENCE OVER DRAWINGS MADE TO SMALLER SCALE AND THOSE FOR GENERAL PURPOSES. ALL WORK IS TO CONFORM TO RELEVANT AUSTRALIAN STANDARDS AND OTHER CODES AS APPLICABLE TOGETHER WITH OTHER AUTHORITIES' REQUIREMENTS AND REGULATIONS. DESIGN DRAWINGS BY OTHER DISCIPLINES HAVE BEEN INCLUDED FOR COORDINATION ONLY. THIS DRAWING AND DESIGN IS SUBJECT TO COPYRIGHT AND MAY NOT BE REPRODUCED WITHOUT PRIOR WRITTEN CONSENT. IF IN DOUBT, ASK.

**NOT FOR CONSTRUCTION**

ISSUE	DESCRIPTION	BY	APPD	DATE
A	SECTION 4.55	TC	SW	17/12/2020



**PROJECT TEAM**

**ARCHITECT**  
**GILES TRIBE ARCHITECTS**  
Level 1, 1 Chandos Street, St Leonards NSW 2055  
Telephone: (02) 9264 5005

**ARBORIST**  
**BLUEGUM**  
21 Belconnen Avenue, Avalon NSW 2107  
Telephone: 0431 286 080

**LANDSCAPE ARCHITECT**

**CONTEXT**  
**LANDSCAPE ARCHITECTURE**

Context Landscape Design Pty Ltd  
Level 2, 52-58 William Street, East Sydney NSW 2011  
PO Box 8968, Sydney South NSW 1235  
T. 61 2 8244 8900 W. www.context.net.au  
ABN: 14 093 350 719

**CLIENT NAME**  
**ROSE GROUP**

**PROJECT**  
**23 FISHER RD, DEE WHY**  
23 FISHER RD, DEE WHY NSW 2099

**DRAWING TITLE**  
**DETAIL PLAN**

PROJECT STAGE SECTION 4.55	SHEET SIZE A1
PROJECT NUMBER 18515	DRAWING NUMBER L_4004
ISSUE A	