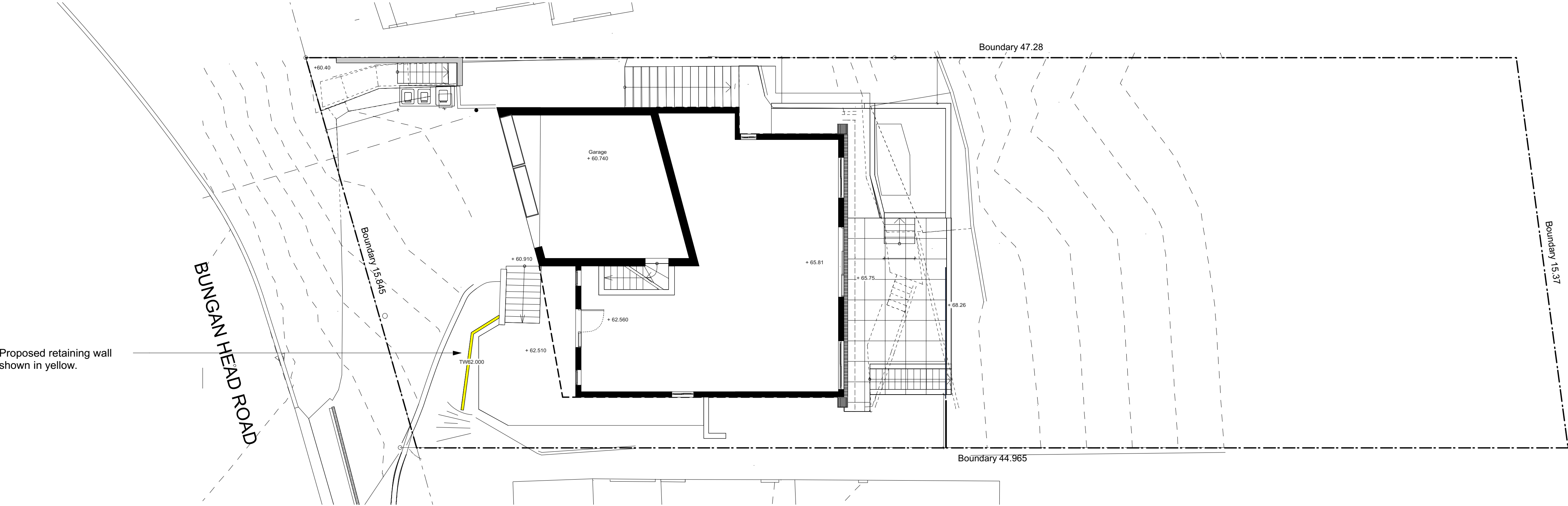


Existing External Plan
1:100@A1 1:200@A3. Do not scale off plan



Proposed retaining wall
shown in yellow.

Legend

- MULCH AREA
- SOFT-FALL
- SAND
- ARTIFICIAL TURF
- TURF AREA
- TIMBER DECKING
- CONCRETE PAVING
- UNIT PAVING
- STAIRS
- PEBBLE
- TIMBER
- WATER
- MASONRY RETAINING WALL
- STONE RETAINING WALL
- TIMBER RETAINING WALL
- BOULDER RETAINING WALL
- SITE OR WORKS BOUNDARY
- PROPOSED LEVEL
- TOP OF WALL LEVEL
- MATERIAL NAME
- SURFACE FALL DIRECTION
- SURFACE DRAINS
- SURVEY (50% GREY LINES)
- EXISTING TREE TO RETAIN
- EXISTING TREE TO REMOVE
- EXISTING ROCK OUTCROP

THIS PLAN IS TO BE READ IN
CONJUNCTION WITH
THE CONDITIONS OF DEVELOPMENT
CONSENT

MOD2019/0469

Notes:
>Do not scale off plan.
>Contractors to check all measurements
onsite before quoting or commencing work.
>If abnormalities arise, contact the
Landscape Architect.
>This design is copyright and is not to be
reproduced in anyway without written consent
of Jamie King Landscape Architect

C	10/09/19	Issue C for 4.55
B	22/07/19	Engineer coord
A	11/06/19	DRAFT issue for review

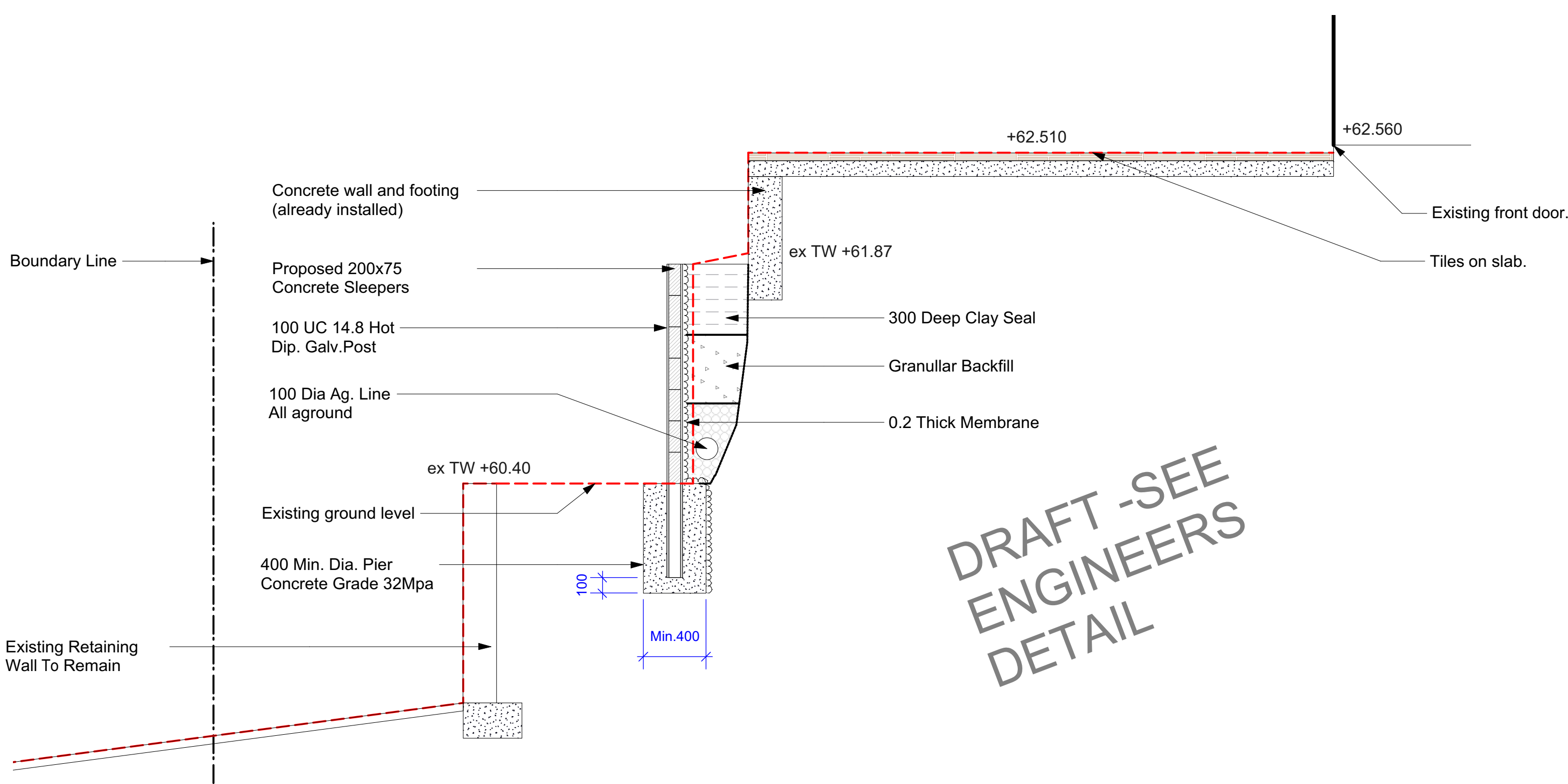
ISSUE	DATE	REVISION	PROJECT #
PROJECT	68 Bungun Head Road Newport		1973
CLIENT	Mc Call	DATE # SCALE @ A1 DRAWN CHKD	DWG # See above See Plan SA JK
DWG	4.55 Plan	REVISION	

Jamie King Landscape Architect
84 Palmgrove Rd, Avalon, NSW, 2107
W: www.jamieking.com.au
T: 0421 517 991
E: jamie@jamieking.com.au



JAMIE KING
LANDSCAPE ARCHITECT
DESIGN ● APPROVE ● MANAGE

1:25@A1 1:50@A3. Do not scale off plan



1:25@A1 1:50@A3. Do not scale off plan

DRAFT -SEE
ENGINEERS
DETAIL



B	10/09/19	Issue C for 4.55	Landscape Architect.	
C	20/07/19	Engineer coord	> This design is copyright and is not to be reproduced in anyway without written consent of Jamie King Landscape Architect	
A	11/06/19	DRAFT issue for review		
ISSUE	DATE	REVISION		
PROJECT			PROJECT #	
68 Bungan Head Road Newport			1973	
C	CLIENT	Mc Call	DATE #	See above
			SCALE @ A1	See Plan
			DRAWN	SA
DWG	4.55 Detail Plan		CHKD	JK
			REVISION	
			Sht-102	

Jamie King Landscape Architect
84 Palmgrove Rd, Avalon, NSW, 2107 T: 0421 517 991
W: www.jamieking.com.au
E: jamie@jamieking.com.au

Notes:

- >Do not scale off plan.
- >Contractors to check all measurements onsite before quoting or commencing work.
- >If abnormalities arise, contact the Landscape Architect.
- >This design is copyright and is not to be reproduced in anyway without written consent of Jamie King Landscape Architect