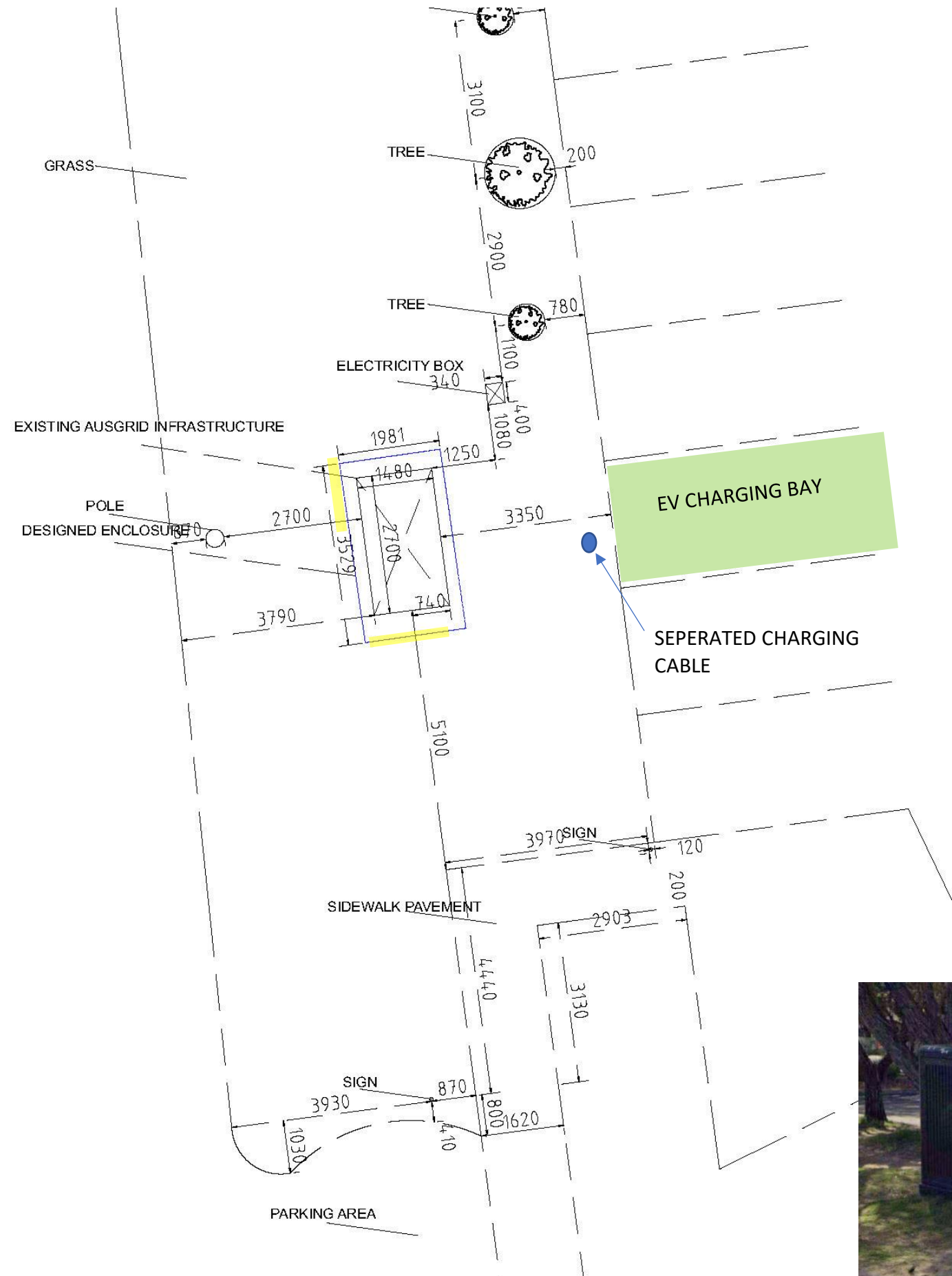




PITTWATER RD



MAIN STREET:	PARK ST
CROSS ST:	PITTWATER RD
OUTSIDE/OPP:	MONA VALE HALL
SUBURB:	MONA VALE
KNOWN AS:	PITTWATER PARK



ISSUE	DESCRIPTION	DATE	DRAWN
A	DRAFT FOR REVIEW	3/12/20	JC
B	DA ISSUE	4/12/20	AG

THIS DRAWING IS THE PROPERTY OF JOLT CHARGE AND SHALL NOT BE COPIED IN PART OR IN WHOLE WITHOUT AUTHORISATION

JOLT CHARGE PTY LTD
LEVEL 24, 3000 BARANGAROO AVE, SYDNEY NSW2000

NORTHERN BEACHES COUNCIL			
PARK ST, MONA VALE			
DATE	SCALE	SITE NO.	REVISION
4/12/20	1:75	16388	B



MAIN STREET:	BUNGAN ST
CROSS ST:	PITTWATER RD
OUTSIDE/OPP:	7 BUNGAN ST
SUBURB:	MONA VALE
KNOWN AS:	BUNGAN PITTWATER



ISSUE	DESCRIPTION	DATE	DRAWN
A	DRAFT FOR REVIEW	3/12/20	JC
B	DA ISSUE	4/12/20	AG

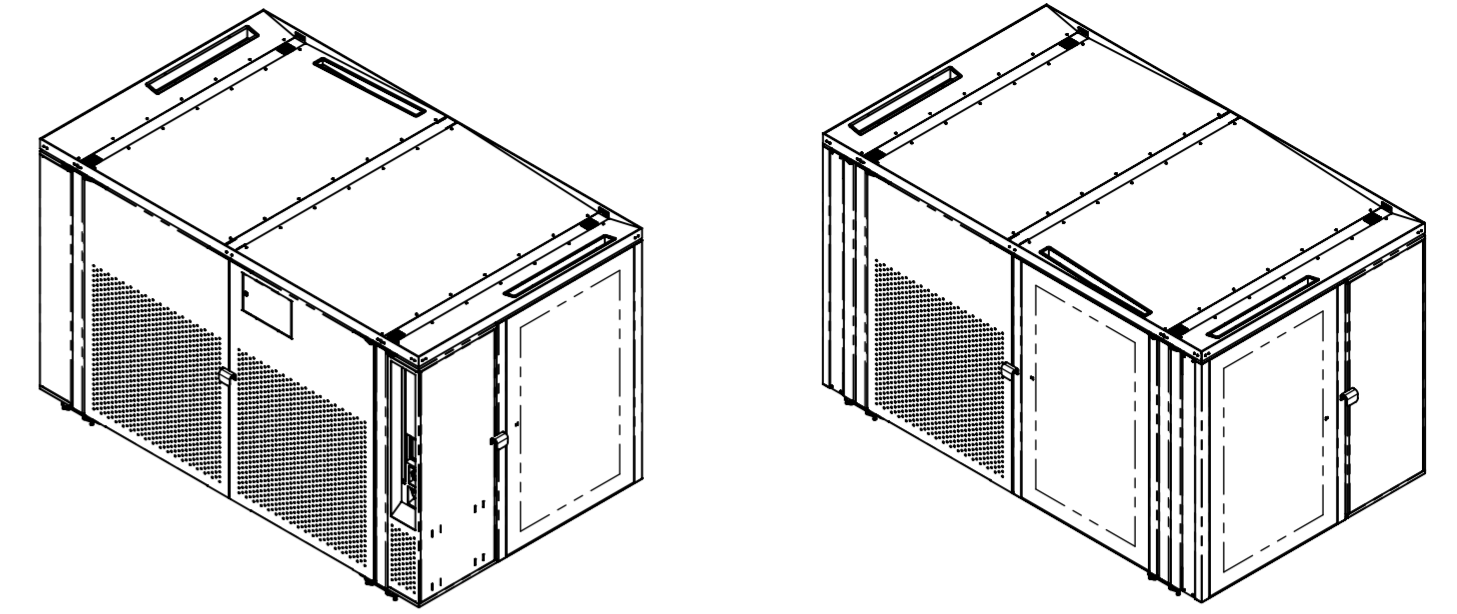
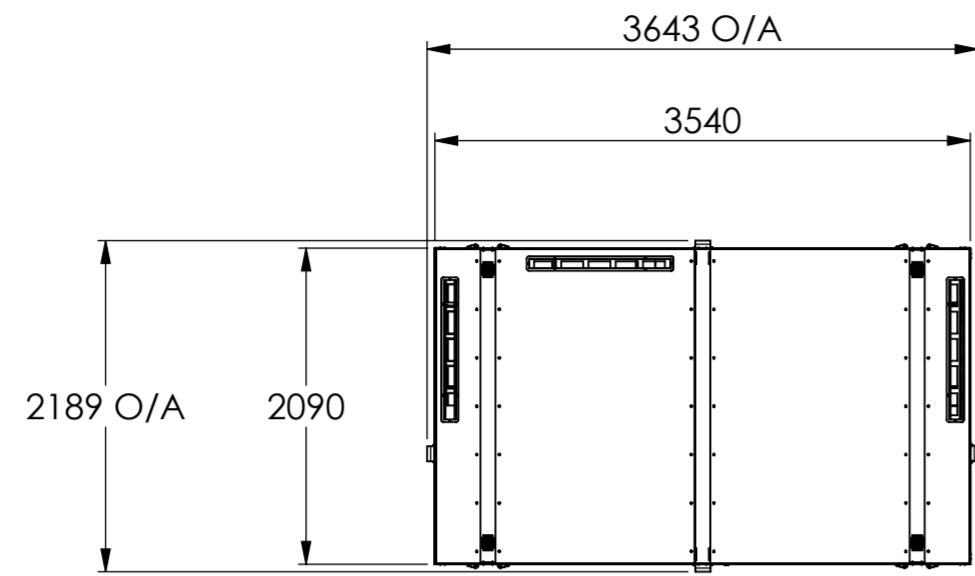
THIS DRAWING IS THE PROPERTY OF JOLT CHARGE AND SHALL NOT BE COPIED IN PART OR IN WHOLE WITHOUT AUTHORISATION

JOLT CHARGE PTY LTD
LEVEL 24, 300 BARANGAROO AVE, SYDNEY NSW2000

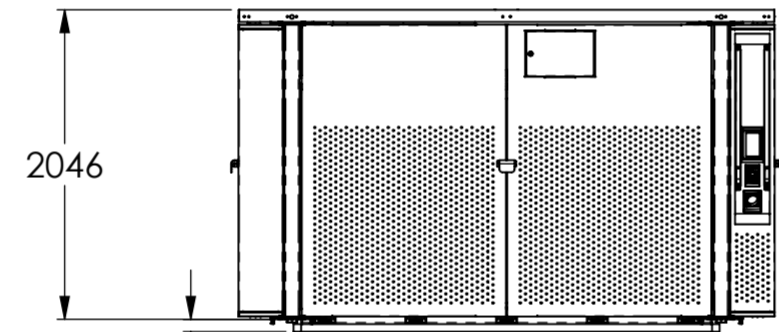
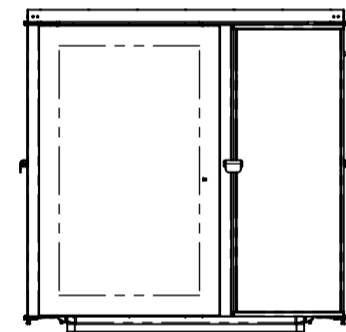
NORTHERN BEACHES COUNCIL

BUNGAN ST, MONA VALE

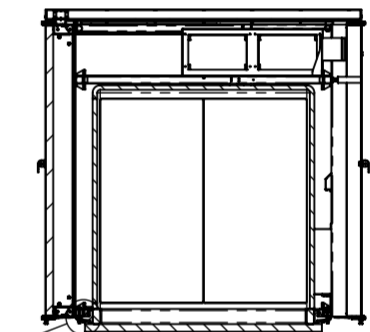
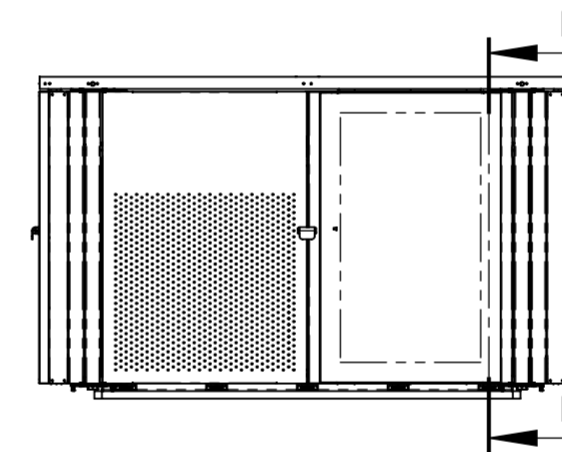
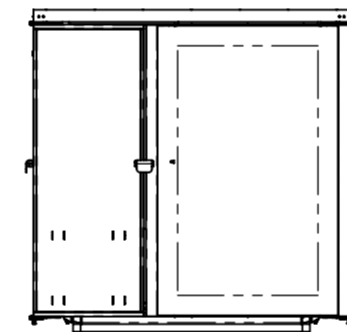
DATE	SCALE	SITE NO.	REVISION
4/12/20	1:75	16460	B



ISOMETRIC VIEWS (NTS)



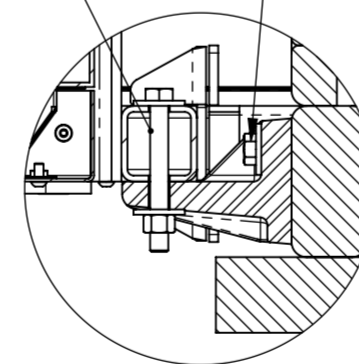
82 GROUND CLEARANCE



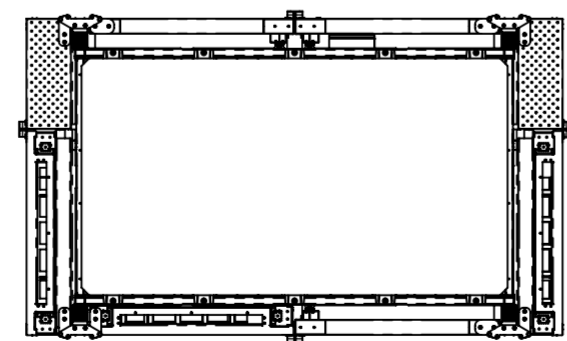
SECTION D-D

BOLT BRACKET TO
STRUCTURAL FRAME

M12 BLIND BOLT BRACKETS
TO TRANSFORMER



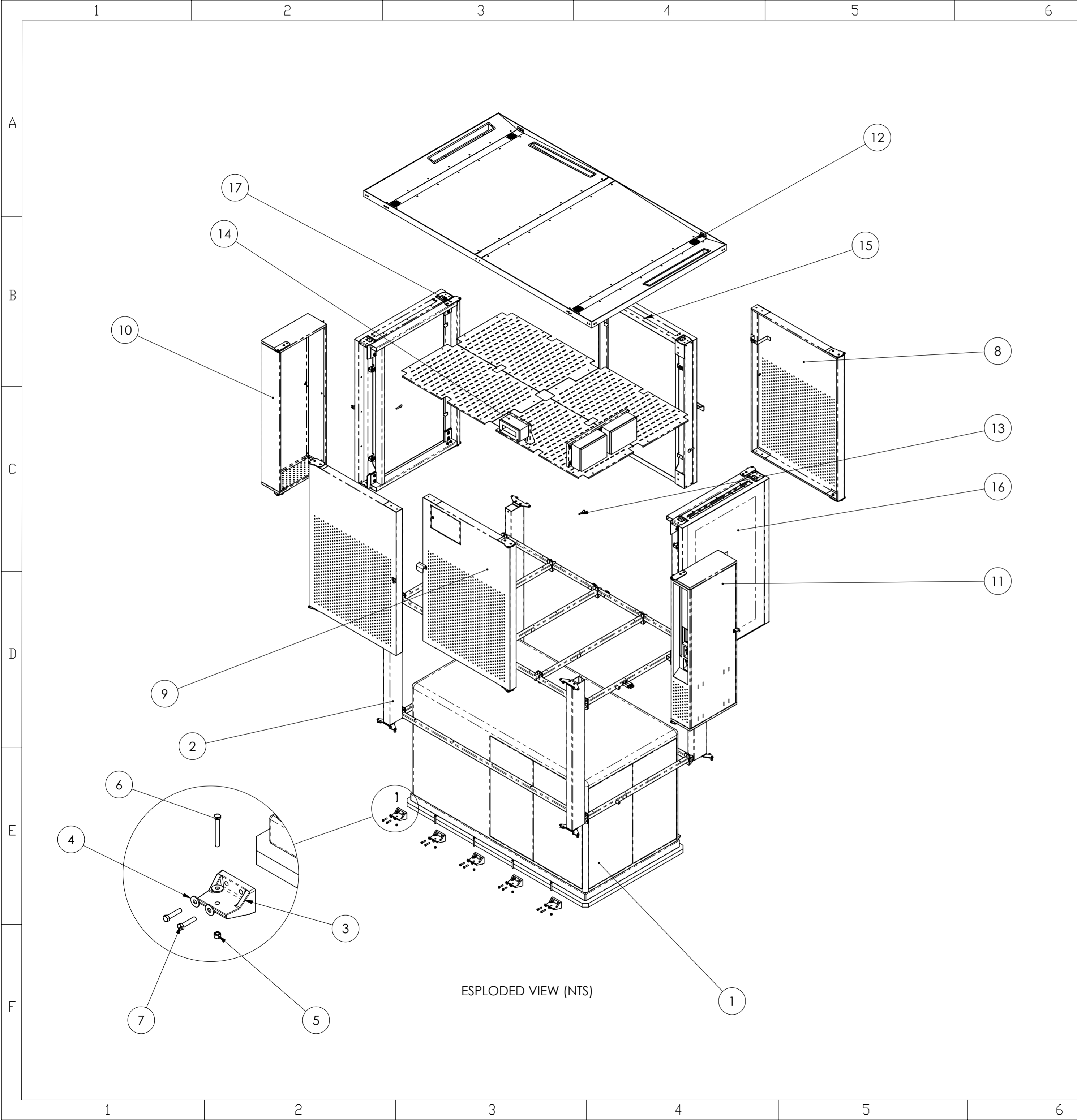
DETAIL E
SCALE 1 : 5



NOTES:

- FUNCTIONAL DIMENSIONS SHOWN ONLY. REFER TO 3D CAD FILE FOR ALL OTHER DIMENSIONS &/ OR DRAFT
- 'I.P.' INDICATES ONE OR BOTH POINTS OF DIMENSION TAKEN AT THEORETICAL INTERSECTION POINT OF 2 LINES
- 'O/A' INDICATES OVERALL DIMENSION
- ALL DIMENSIONS IN mm
- TOLERANCE UNLESS SPECIFIED OTHERWISE:
LINEAR ±0.1
ANGULAR ±0.5
- PARTS TO BE FREE FROM SCRATCHES & DAMAGE
- ALL SURFACES TO BE SMOOTH, CLEAN & FREE OF ANY IMPERFECTIONS

A	ORIGINAL ISSUE	MB	01/06/2020
REV	DESCRIPTION	DRAWN	DATE
VERT DESIGN SUITE 7, 17 THURLOW ST REDFERN 2016 t: 9698 7770 www.vertdesign.com.au			
DO NOT SCALE DRAWING		THIRD ANGLE PROJECTION	
TITLE JOLT GRILL GENERAL ASSEMBLY		CLIENT JOLT	
MATERIAL SEE PART DRAWINGS		PROJECT JOLT-PG	
FINISH-COLOUR SEE PART DRAWINGS		PART No. JOLT-PG-GA-01	
MODEL REVISION 0.1	DRAWING REVISION A	ASSEMBLY JOLT-PG-GA-01	SCALE 1:50
DRAWN MB	DATE 11/06/2020	SHEET 1 OF 3	A2
ISSUED FOR:		<input type="checkbox"/> REFERENCE <input type="checkbox"/> PRODUCTION <input checked="" type="checkbox"/> QUOTATION ONLY <input type="checkbox"/> CLIENT APPROVAL <input type="checkbox"/> PROTOTYPE <input type="checkbox"/> PRELIMINARY TOOLING	



ITEM NO.	PART NUMBER	DESCRIPTION	Default/ QTY.
1	transfer cabinet	AUSGRID KIOSK	1
2	jolt-pg-st_a01_revA	STRUCTURE SUB-ASSEMBLY	1
3	jolt_pg_cast bracket_revB	TRANSFORMER MOUNT BRACKET	10
4	B18.22M - Plain washer, 12 mm, regular		40
5	B18.2.4.2M - Hex nut, Style 2, M12 x 1.75 --D-N		10
6	B18.2.3.5M - Hex bolt M12 x 1.75 x 100 --30N		10
7	B18.2.3.5M - Hex bolt M12 x 1.75 x 55 --30N	NOTE: USE BLIND BOLT	20
8	jolt-pg- drb_a01_revA	BLANK DOOR SUB-ASSEMBLY	2
9	jolt-pg- drm_a01_revA	METER DOOR SUB-ASSEMBLY	1
10	jolt-pg- blb_a01_revA	BLANK BAY SUB-ASSEMBLY	1
11	jolt-pg- chb_sub01_revA	CHARGE BAY SUB-ASSEMBLY	1
12	jolt-pg-rf_a01_revA	ROOF SUB-ASSEMBLY	1
13	DRI-34	DETENT PIN	4
14	jolt-pg- EQ_a01_revA	EQUIPMENT SHELF SUB- ASSEMBLY	1
15	jolt-pg-scr_a01_revA	SCREEN SUB-ASSEMBLY	1
16	jolt-pg- scs_a01_revA	SCREEN FRAME SUB-ASSEMBLY	1
17	jolt-pg- scs_a01_revA	SCREEN FRAME SUB-ASSEMBLY (OPPOSITE SIDE)	1

- NOTES:**
- FUNCTIONAL DIMENSIONS SHOWN ONLY, REFER TO 3D CAD FILE FOR ALL OTHER DIMENSIONS &/ OR DRAFT
 - 'I.P.' INDICATES ONE OR BOTH POINTS OF DIMENSION TAKEN AT THEORETICAL INTERSECTION POINT OF 2 LINES
 - 'O/A' INDICATES OVERALL DIMENSION
 - ALL DIMENSIONS IN mm
 - TOLERANCE UNLESS SPECIFIED OTHERWISE:
LINEAR ±0.1
ANGULAR ±0.5
 - PARTS TO BE FREE FROM SCRATCHES & DAMAGE
 - ALL SURFACES TO BE SMOOTH, CLEAN & FREE OF ANY IMPERFECTIONS

A		ORIGINAL ISSUE	MB	01/06/2020
REV	DESCRIPTION		DRAWN	DATE
VERT DESIGN				
SUITE 7, 17 THURLOW ST REDFERN 2016 t: 9698 7770 www.vertdesign.com.au				
DO NOT SCALE DRAWING		THIRD ANGLE PROJECTION		ISSUED FOR:
TITLE JOLT GRILL GENERAL ASSEMBLY		CLIENT JOLT		<input type="checkbox"/> REFERENCE
MATERIAL SEE PART DRAWINGS		PROJECT JOLT-PG		<input type="checkbox"/> PRODUCTION
FINISH-COLOUR SEE PART DRAWINGS		PART No. JOLT-PG-GA-01		<input checked="" type="checkbox"/> QUOTATION ONLY
MODEL REVISION 0.1		DRAWING REVISION A		<input type="checkbox"/> CLIENT APPROVAL
DRAWN MB		DATE 11/06/2020		<input type="checkbox"/> PROTOTYPE
		SHEET 2 OF 3		<input type="checkbox"/> PRELIMINARY TOOLING
		ASSEMBLY JOLT-PG-GA-01		SCALE 1:30
				A2

1 2 3 4 5 6 7 8

A

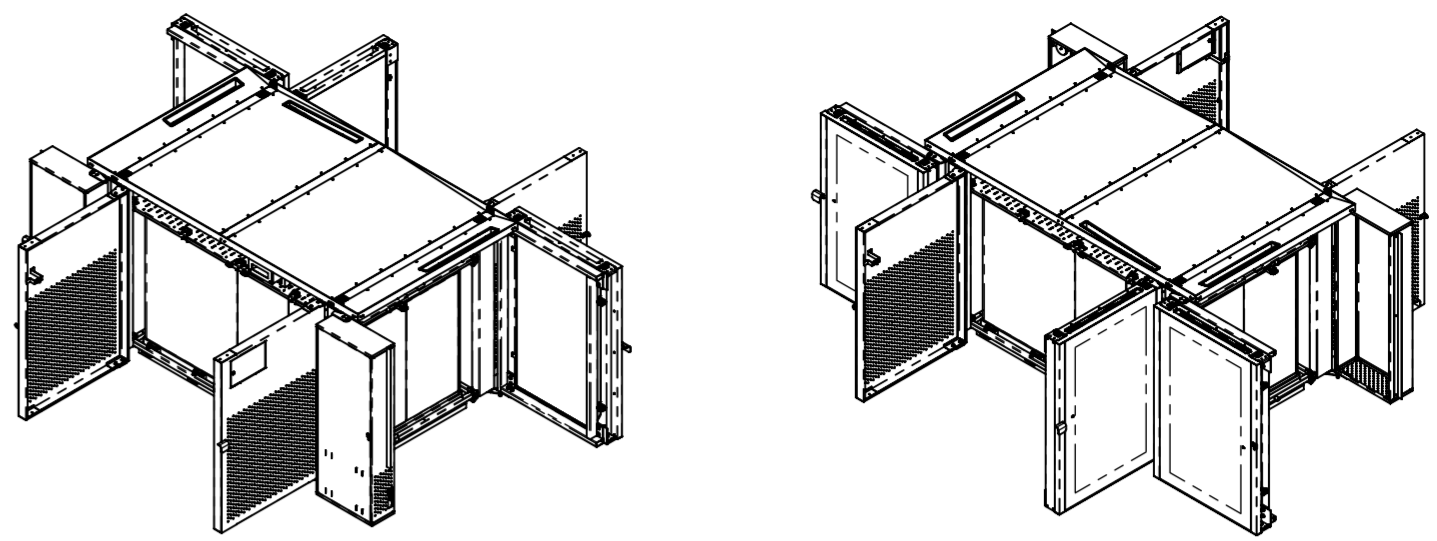
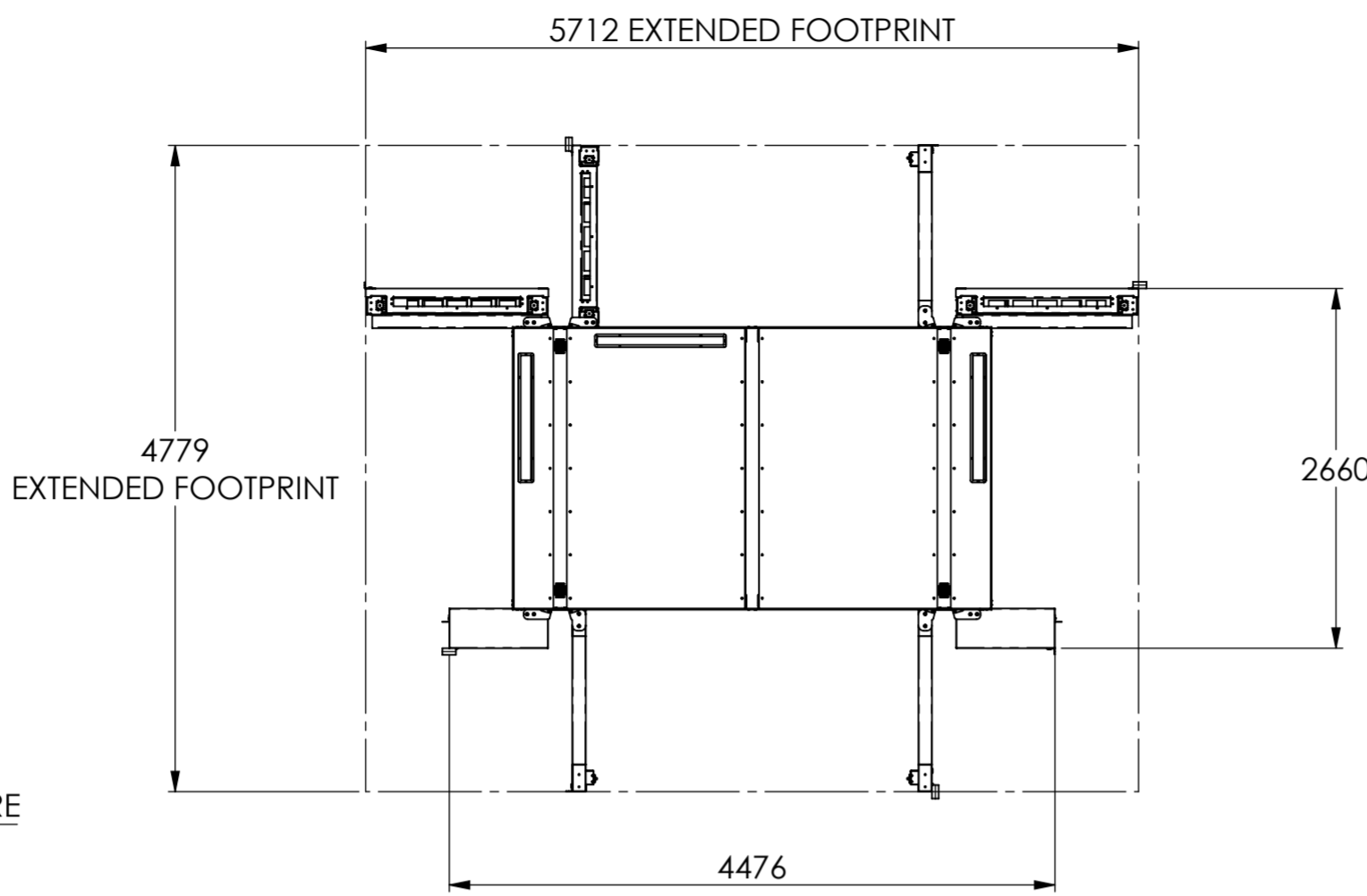
B

C

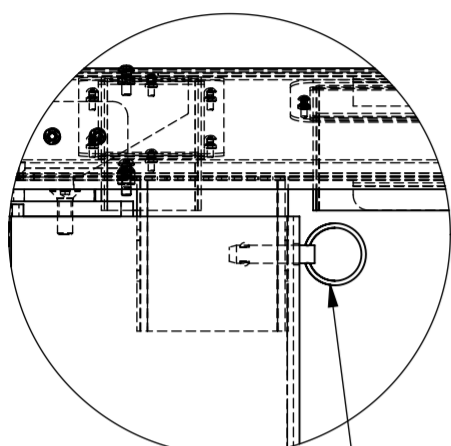
D

E

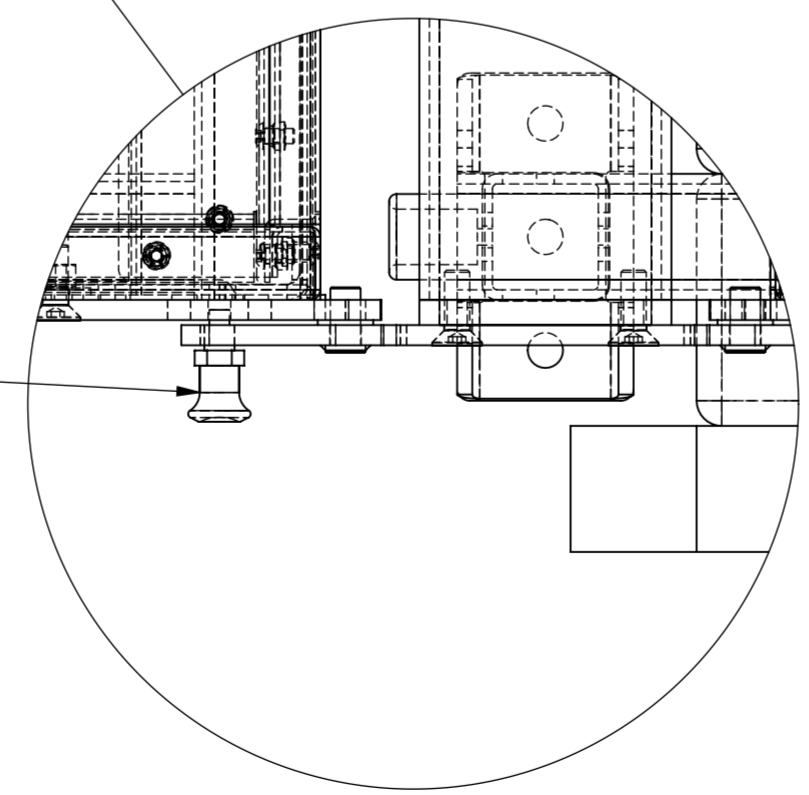
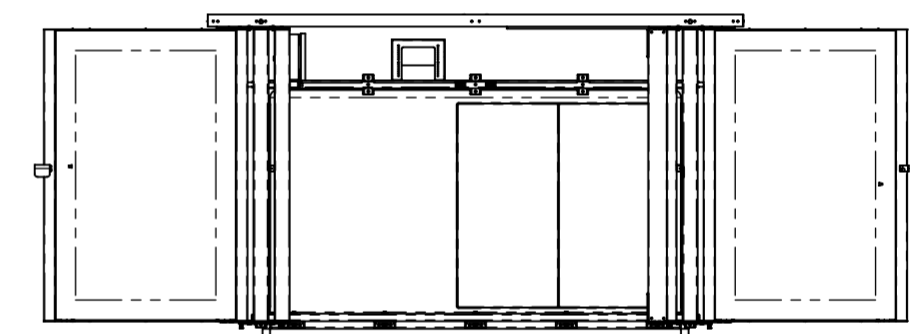
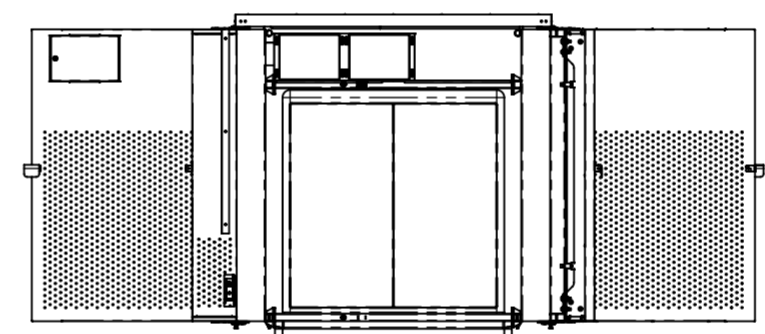
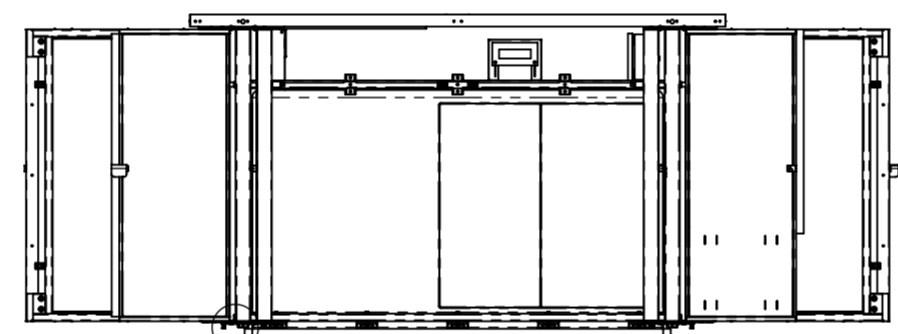
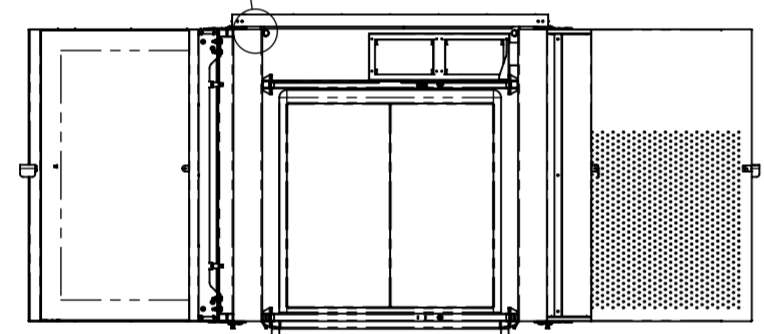
F



ISOMETRIC VIEW (NTS)



DETAIL G
SCALE 1 : 5
USE OF DETENT PIN
TO SECURE ROOF STRUCTURE



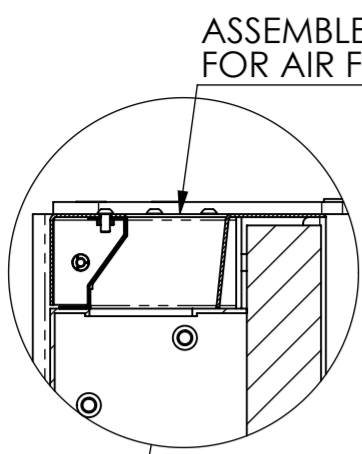
SPRING PLUNGER IS USED TO
HOLD DOORS AT 90° SWING RADIUS

DETAIL F
SCALE 1 : 3

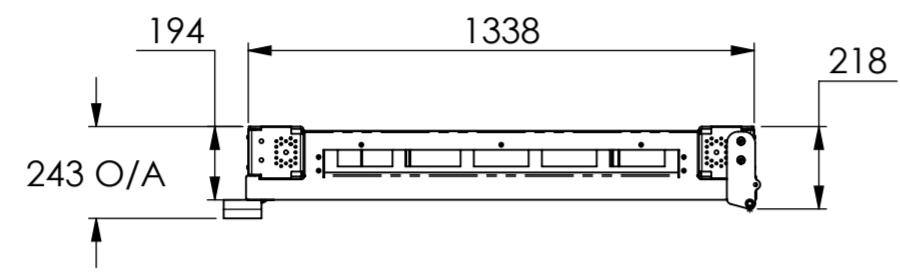
- NOTES:
- FUNCTIONAL DIMENSIONS SHOWN ONLY. REFER TO 3D CAD FILE FOR ALL OTHER DIMENSIONS &/ OR DRAFT
 - 'L.P.' INDICATES ONE OR BOTH POINTS OF DIMENSION TAKEN AT THEORETICAL INTERSECTION POINT OF 2 LINES
 - 'O/A' INDICATES OVERALL DIMENSION
 - ALL DIMENSIONS IN mm
 - TOLERANCE UNLESS SPECIFIED OTHERWISE:
LINEAR ±0.1
ANGULAR ±0.5
 - PARTS TO BE FREE FROM SCRATCHES & DAMAGE
 - ALL SURFACES TO BE SMOOTH, CLEAN & FREE OF ANY IMPERFECTIONS

A	ORIGINAL ISSUE	MB	01/06/2020
REV	DESCRIPTION	DRAWN	DATE
<p>VERT DESIGN SUITE 7, 17 THURLOW ST REDFERN 2016 t: 9698 7770 www.vertdesign.com.au</p>			
DO NOT SCALE DRAWING		THIRD ANGLE PROJECTION	
ISSUED FOR:		<input type="checkbox"/> REFERENCE <input type="checkbox"/> PRODUCTION <input checked="" type="checkbox"/> QUOTATION ONLY <input type="checkbox"/> CLIENT APPROVAL <input type="checkbox"/> PROTOTYPE <input type="checkbox"/> PRELIMINARY TOOLING	
TITLE	JOLT GRILL GENERAL ASSEMBLY	CLIENT	JOLT
MATERIAL	SEE PART DRAWINGS	PROJECT	JOLT-PG
FINISH-COLOUR	SEE PART DRAWINGS	PART No.	JOLT-PG-GA-01
MODEL REVISION	0.1	DRAWING REVISION	A
DRAWN	MB	DATE	11/06/2020
		SHEET	3 OF 3
ASSEMBLY	JOLT-PG-GA-01	SCALE	1:50
			A2

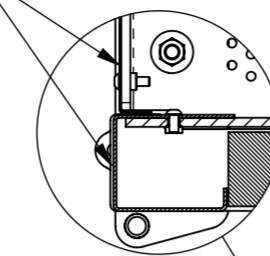
1 2 3 4 5 6 7 8



DETAIL D
SCALE 1 : 5

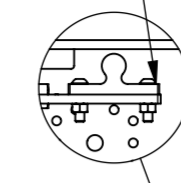


ATTACH COVER PLATE & TRIM
PLATE WITH FASTENERS

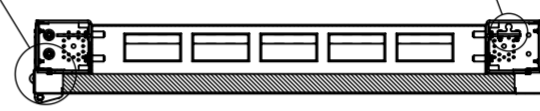


DETAIL G
SCALE 1 : 5

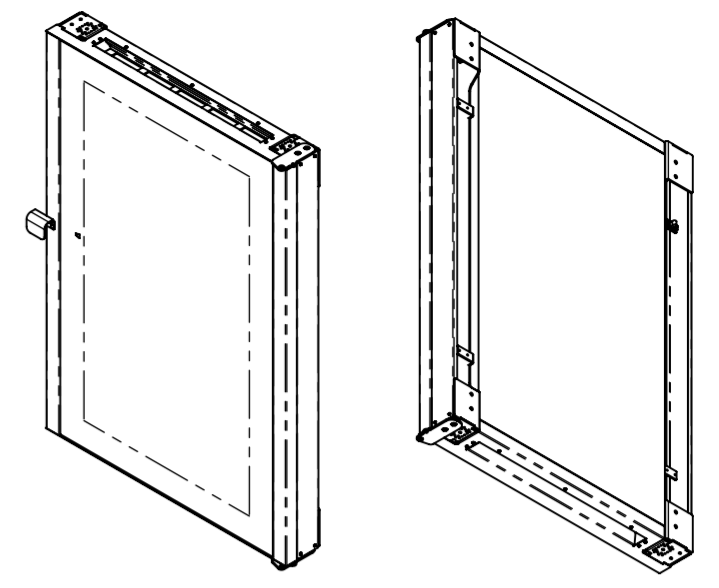
SECURE CATCH PLATE
WITH FASTENERS



DETAIL F
SCALE 1 : 5

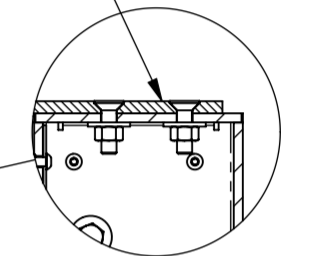


SECTION E-E



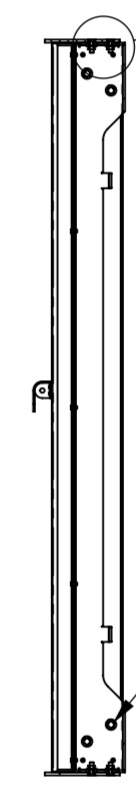
ISOMETRIC VIEWS (NTS)

CONNECT HINGE PLATES
WITH NUT & BOLT

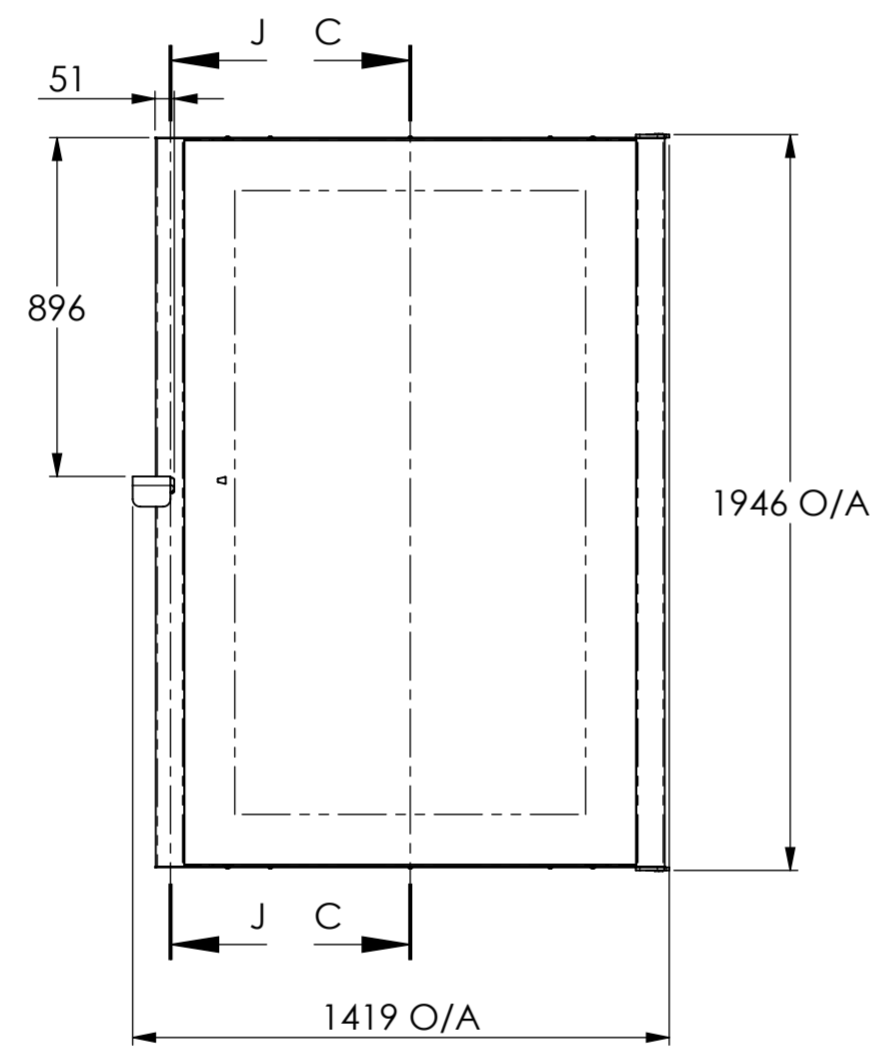


DETAIL I
SCALE 1 : 5

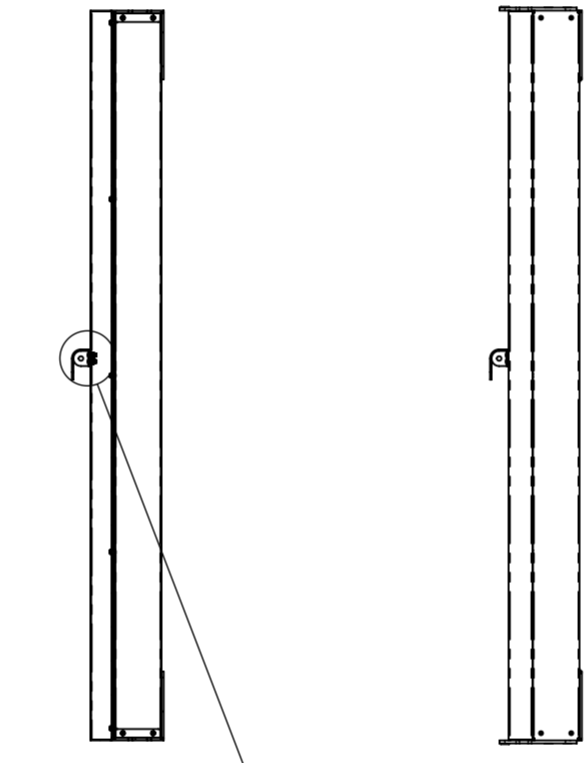
SCREEN CONNECTED
TO CHANNELS WITH
M10 FASTENERS



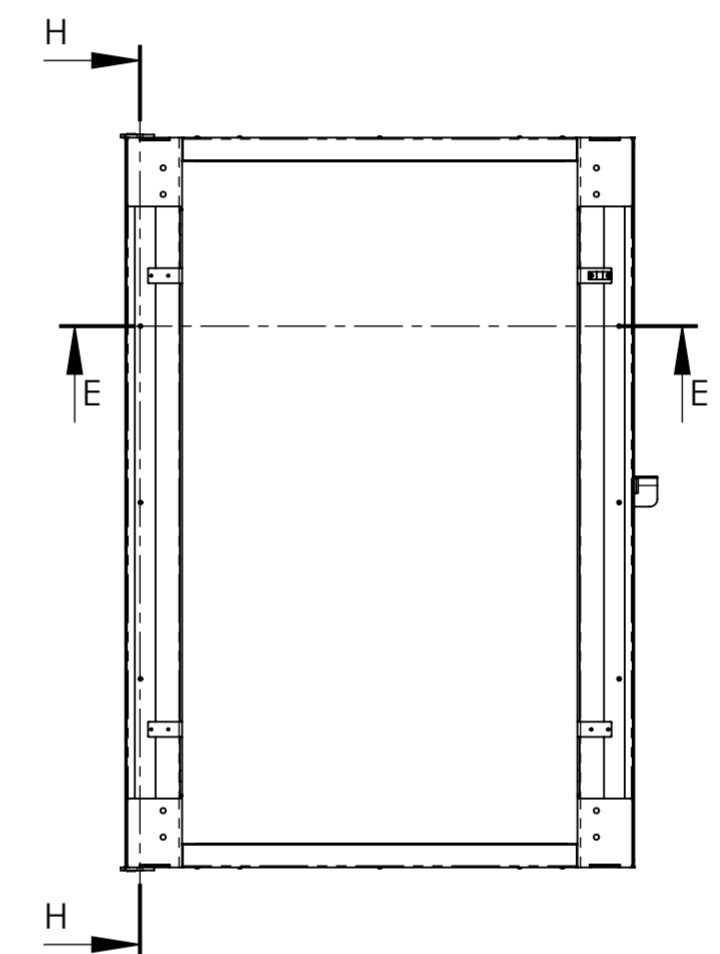
SECTION H-H



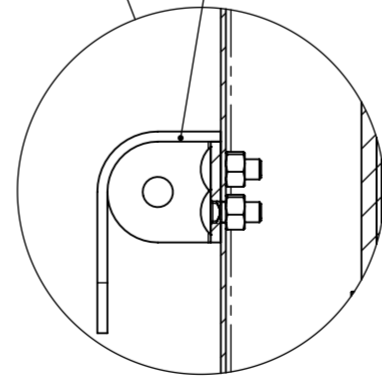
SECTION C-C



SECTION J-J



SECURE PADLOCK HANDLE
WITH M8 CUP HEAD BOLTS

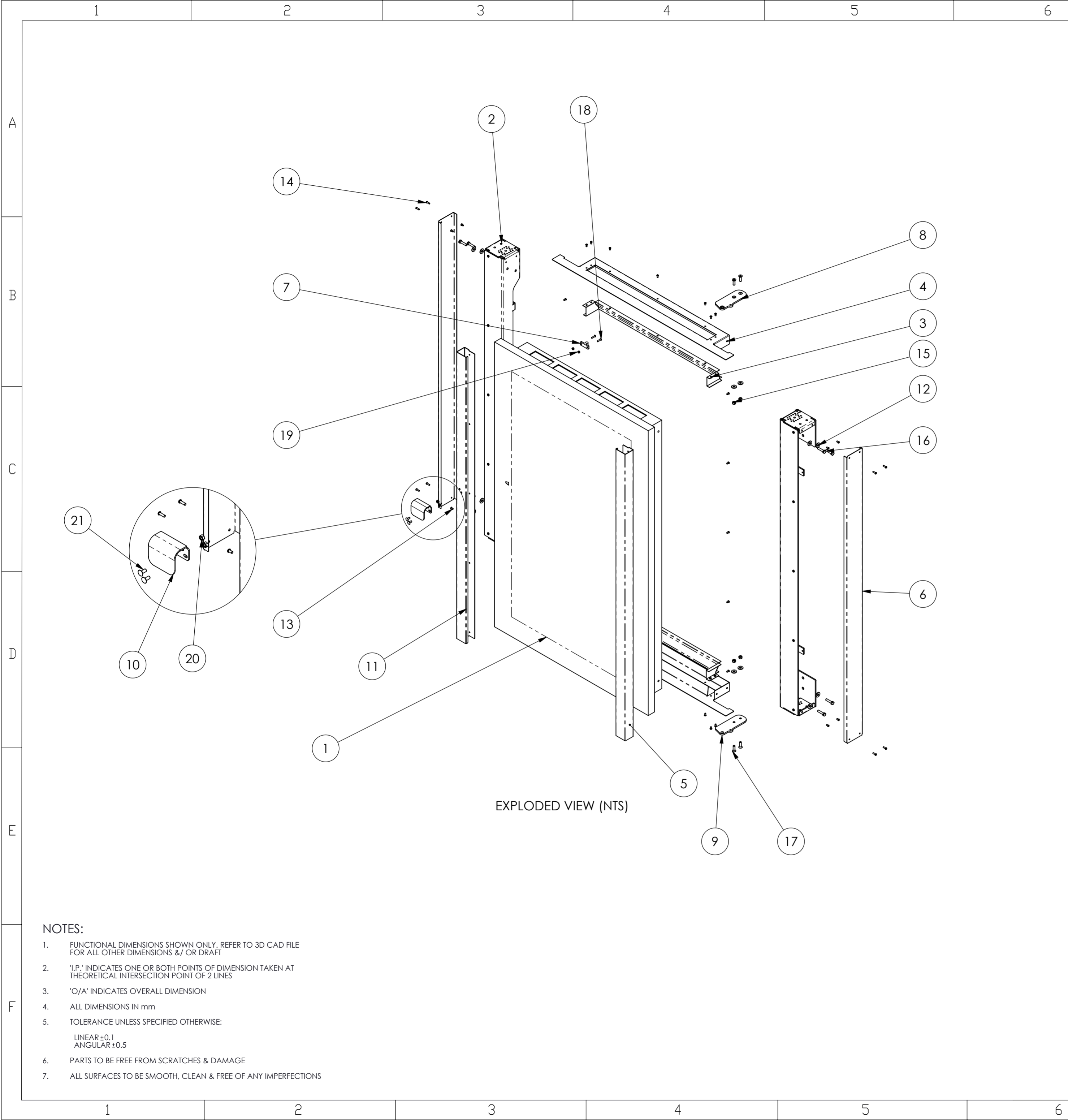


DETAIL L
SCALE 1 : 3

NOTES:

- FUNCTIONAL DIMENSIONS SHOWN ONLY. REFER TO 3D CAD FILE FOR ALL OTHER DIMENSIONS &/ OR DRAFT
- 'L.P.' INDICATES ONE OR BOTH POINTS OF DIMENSION TAKEN AT THEORETICAL INTERSECTION POINT OF 2 LINES
- 'O/A' INDICATES OVERALL DIMENSION
- ALL DIMENSIONS IN mm
- TOLERANCE UNLESS SPECIFIED OTHERWISE:
LINEAR ±0.1
ANGULAR ±0.5
- PARTS TO BE FREE FROM SCRATCHES & DAMAGE
- ALL SURFACES TO BE SMOOTH, CLEAN & FREE OF ANY IMPERFECTIONS

A	ORIGINAL ISSUE	MB	01/06/2020	
REV	DESCRIPTION	DRAWN	DATE	
VERT DESIGN				
SUITE 7, 17 THURLOW ST REDFERN 2016 t: 9698 7770 www.vertdesign.com.au				
DO NOT SCALE DRAWING		THIRD ANGLE PROJECTION		ISSUED FOR:
TITLE	SCREEN SUB-ASSEMBLY	CLIENT	JOLT	<input type="checkbox"/> REFERENCE
MATERIAL	ZINCALUME STEEL	PROJECT	JOLT-PG	<input type="checkbox"/> PRODUCTION
FINISH-COLOUR	POWDERCOAT DULUX ARMOURS PRAY SATIN BLACK 9109024S	PART No.	JOLT-PG-SCR-SUB-01	<input checked="" type="checkbox"/> QUOTATION ONLY
MODEL REVISION	0.1	DRAWING REVISION	A	<input type="checkbox"/> CLIENT APPROVAL
DRAWN	MB	DATE	11/06/2020	<input type="checkbox"/> PROTOTYPE
		SHEET	1 OF 2	<input type="checkbox"/> PRELIMINARY TOOLING
		ASSEMBLY	JOLT-PG-GA-01	
		SCALE	1:20	
			A2	



ITEM NO.	PART NUMBER	DESCRIPTION	Default/ QTY.
1	LG screen block	LG AD SCREEN *FREE ISSUE ITEM*	1
2	jolt-pg-scr-p01_revA	SCR STRUCTURAL CHANNEL	2
3	jolt-pg-scr-p03_revA	SCR DUCTING	2
4	jolt-pg-scr-p02_revA	SCR TOP PLATE	2
5	jolt-pg-scr-p04_revA	SCR TRIM CHANNEL	1
6	jolt-pg-scr-p05_revA	SCR COVER PLATE	2
7	BH2132_door holder	STOCK PART (www.indrub.com.au)	1
8	jolt_pg_hng-p02_revA	HINGE PLATE TYPE A	1
9	jolt_pg_hng-p03_revA	HINGE PLATE TYPE A	1
10	jolt_pg_pad-p01_revA	PADLOCK HANDLE	1
11	jolt-pg-scr-p04_revA	SCR TRIM CHANNEL WITH PADLOCK HOLES	1
12	B18.22M - Plain washer, 10 mm, regular		12
13	B18.3.4M - 6 x 1.0 x 12 SBHCS --N		32
14	B18.3.4M - 6 x 1.0 x 20 SBHCS --N		8
15	B18.2.4.2M - Hex nut, Style 2, M10 x 1.5, with 16mm WAF --D-N		4
16	B18.2.3.5M - Hex bolt M10 x 1.5 x 45 --26N		8
17	B18.3.5M - 10 x 1.5 x 35 Socket FCHS --35N		4
18	B18.3.4M - 6 x 1.0 x 25 SBHCS --N		2
19	B18.2.4.2M - Hex nut, Style 2, M6 x 1 -D-N		4
20	B18.2.4.2M - Hex nut, Style 2, M8 x 1.25 --D-N		2
21	AS-NZS 1390 S - M8 x 20-N		2

EXPLODED VIEW (NTS)

- NOTES:
- FUNCTIONAL DIMENSIONS SHOWN ONLY. REFER TO 3D CAD FILE FOR ALL OTHER DIMENSIONS &/ OR DRAFT
 - 'L.P.' INDICATES ONE OR BOTH POINTS OF DIMENSION TAKEN AT THEORETICAL INTERSECTION POINT OF 2 LINES
 - 'O/A' INDICATES OVERALL DIMENSION
 - ALL DIMENSIONS IN mm
 - TOLERANCE UNLESS SPECIFIED OTHERWISE:
LINEAR ±0.1
ANGULAR ±0.5
 - PARTS TO BE FREE FROM SCRATCHES & DAMAGE
 - ALL SURFACES TO BE SMOOTH, CLEAN & FREE OF ANY IMPERFECTIONS

A	ORIGINAL ISSUE	MB	01/06/2020
REV	DESCRIPTION	DRAWN	DATE
VERT DESIGN SUITE 7, 17 THURLOW ST REDFERN 2016 t: 9698 7770 www.vertdesign.com.au			
DO NOT SCALE DRAWING		THIRD ANGLE PROJECTION	
ISSUED FOR:		<input type="checkbox"/> REFERENCE <input type="checkbox"/> PRODUCTION <input checked="" type="checkbox"/> QUOTATION ONLY <input type="checkbox"/> CLIENT APPROVAL <input type="checkbox"/> PROTOTYPE <input type="checkbox"/> PRELIMINARY TOOLING	
TITLE	SCREEN SUB-ASSEMBLY	CLIENT	JOLT
MATERIAL	ZINCALUME STEEL	PROJECT	JOLT-PG
FINISH-COLOUR	POWDERCOAT DULUX ARMOURSPRAY SATIN BLACK 9109024S	PART No.	JOLT-PG-SCR-SUB-01
MODEL REVISION	0.1	DRAWING REVISION	A
DRAWN	DATE	SHEET	ASSEMBLY
MB	11/06/2020	2 OF 2	JOLT-PG-GA-01
		SCALE	1:15
			A2