

DOCUMENTATION FOR S4.55

1 BILAMBEE AVENUE, BILGOLA PLATEAU



FILED ON
23 AUG 2023

DRAWING SCHEDULE

DRAWING NO.	TITLE	SCALE	ISSUE	DATE
LS01	COVER PAGE, CONSTRUCTION NOTES	N/A	A	24.07.23
LS02	GROUND FLOOR/ PUBLIC DOMAIN PLAN	1:100@A1	A	24.07.23
LS03	GROUND FLOOR/ PUBLIC DOMAIN DETAILS	As shown@A1	A	24.07.23
LS04	LEVEL 2 LANDSCAPE	As shown@A1	A	24.07.23



1 LOCATION PLAN (Six Maps)
NTS

LANDSCAPE NOTES:

Landscape documentation is to be read in conjunction with consultant team documentation for the project particularly architectural and engineering drawings

PUBLIC DOMAIN LANDSCAPE

Landscape construction is to be in accordance with Northern Beaches Public Domain technical specifications

LEVEL 2 LANDSCAPE:

ON SLAB CONSTRUCTION- PLANTER BOXES

Ensure all slabs and planter walls are water proofed and screeded to drainage outlets by others and that drainage outlets are supplied to engineer's requirements, advise the builder if not acceptable. Seek written approval from the Project Manager stating that the waterproofing is complete and that the landscape installation may proceed. Notify the Project Manager of any breaks or inadequacies observed so that any necessary repairs can be made prior to continuing with the landscape work.

Supply and lay over slab, Void Fill System equivalent to Atlantis Flo-Cell or Flo-Tank system as supplied by Atlantis Corporation and connect to stormwater. Ensure system is to approval of project engineer. Overlay the drainage cell system with Geofabric PGM 14 as made by Polyfelt, run polyfelt up the sides of planters to within 40mm of the finished surface level. (Allow to tape the fabric over the top of the planter walls to ensure soil mix does not escape into drainage outlets/holes. Trim excess fabric later).

Supply and install to a depth of 100mm double washed river sand on top of geofabric. Refer to typical detail for soil layering. Topsoil Types A and B shall be a light weight planter box mix and subsoil mix respectively and same or similar to Benedicts SmartMix No.4 and No. 5 respectively. Both are supplied by Benedicts Sand and Gravel, ph: 9966 3500.

MULCH

All mulch is to comply with the following Australian Standards as applicable:

Composts, soil conditioners and mulches: To AS 4454.

All garden bed areas are to be mulched to 75mm depth with same or similar to 'Forest Blend' as supplied by Australian Native Landscapes. Provide mulch which is free of deleterious and extraneous matter such as stones, soil, weeds and sticks.

Place mulch clear of plant stems, and rake to an even surface flush with the surrounding finished levels.

PLANTING

Provide plants which have large healthy root systems, with no evidence of root curl, restriction or damage, are vigorous, well established, free from disease and pests, of good form consistent with the species or variety; and are hardened off, not soft or forced, and suitable for planting in the natural climatic conditions prevailing at the site. Label at least one plant of each species or variety in a batch using a durable, readable tag.

All plant specimens are to be true to name and variety listed in the plant schedules on the landscape drawings. Make no substitutions of species type or container size unless approved by the Landscape Architect and Project Manager.

Shrubs/groundcovers: Excavate a hole big enough for the plant plus 100 mm all round.

Do not plant in unsuitable weather conditions such as extreme heat, cold, wind or rain. In other than sandy soils, suspend excavation when the soil is wet, or during frost periods.

Thoroughly water the plants before planting, immediately after planting, and as required to maintain growth rates free of stress. No plant material shall show signs of water stress at any time. When the hole is of the correct size, remove the plant from the container with minimum disturbance to the root ball. Ensure that the root ball is moist and place in the final position. In the hole and plumb, with the top soil level of the plant root ball level with the finished surface of the surrounding soil to allow placement of mulch.

Backfill with topsoil mixture. Lightly tamp and water to eliminate air pockets. Ensure that topsoil is not placed over the top of the rootball, so that the plant stem is the same height as in the container.

Thoroughly water plants before planting and immediately after planting.

In planting beds and individual plantings, place slow release fertiliser pellets around plants at the time of planting at the rate recommended by the manufacturer.

IRRIGATION

Design, supply and install an automatic drip irrigation system that will deliver evenly, sufficient water to the trees, shrubs and groundcovers to maintain healthy growth continuously throughout the year. The contractor shall be responsible for establishing the numbers and locations of emitters solenoid valves, filters etc required to provide a satisfactory performance of the system and ensure compliance with Water Board and other statutory authority approvals and regulations. Ensure the pipework is installed in the least visible position possible. The detailed layout of all Irrigation is to be approved prior to installation.

Connection to rainwater tank: Connection to rainwater retention tank (located under driveway) is to be by way of an approved pump system meeting pressure requirements of proposed irrigation system. An approved filter system will be required to prevent algae and/or silt clogging effective operation of the irrigation system. The connection of the irrigation system is to be to the approval of the project manager and the project hydraulic engineer. Drippers: Drippers shall deliver 2.3 litres per hour, at 400mm spacing or to base of individual plants as required and should be pressure compacted drippers.

Valves: Ratchet or equivalent approved 24 volt solenoid valves to be installed in Brookes or approved equal valve boxes. Top of box to be installed flush with finished soil level and covered with mulch layer. Controller: Ratchet or similar approved with numbers of stations required to isolate each area. Contractor is to allow for Controller in lockable metal cabinet in a location to the direction of the Architect. Power outlet for the operation of this unit to be supplied by others.

Pipework: Class HDPE pipe with pressure rating PN12.5 to be used for main lines. Copper pipework under paving and through masonry is to be installed. Drip lines will be LDPE laid on the surface of the soil under the mulch layer. Cabling: 24 volt cabling to be enclosed in conduit in all areas. All wire must be installed in an unbroken length from the controller to the solenoid valve. All wires to be multistrand multicore and manufactured to AS 1125 and have polyethylene protective coating. All wire connectors must be waterproof. Cable to be minimum 1.0m2. Rain sensor: A "mini click" or similar or approved device to be supplied and installed to the approval of the superintendent. This unit is to be set to turn the system off after 3mm of rain has occurred.

The Irrigation contractor shall check and monitor the system performance; once per month throughout the planting establishment period. The contractor shall provide the client with a recommended watering schedule for summer and winter that includes the dates to change the operation.

MAINTENANCE/ ESTABLISHMENT

The Landscape Contractor shall maintain the contract areas by the implementation of Industry accepted horticultural practices for 26 weeks. The landscape maintenance works shall include, but not be limited to, the following:

- Replacing failed, damaged or stolen plants;
- Pruning;
- Insect and pest control;
- Fertilising;
- Maintaining mulch;
- Watering;
- Weeding;
- Rubbish removal; and
- Cleaning of the surrounding areas
- Irrigation system.

Keep a Maintenance Logbook recording when and what maintenance work has been done and what materials, including chemical materials, have been used. Immediately report to the Project Manager any evidence of intensive weed infestation, insect attack or disease amongst plant material. Submit all proposals to apply chemicals and obtain approval before starting this work.

NOT ISSUED FOR CONSTRUCTION: S4.55 ONLY



e melissa@mellissawilson.com.au
www.mellissawilson.com.au

ISSUE AMENDMENT
A S4.55 ISSUE

DATE
24.07.23

SCALE: As shown@A1

DRAWN: GM

CLIENT: THE BOSS NSW P/L

DRAWING TITLE

Cover page/ Construction Notes

PROJECT

1 BILAMBEE AVENUE, BILGOLA PLATEAU

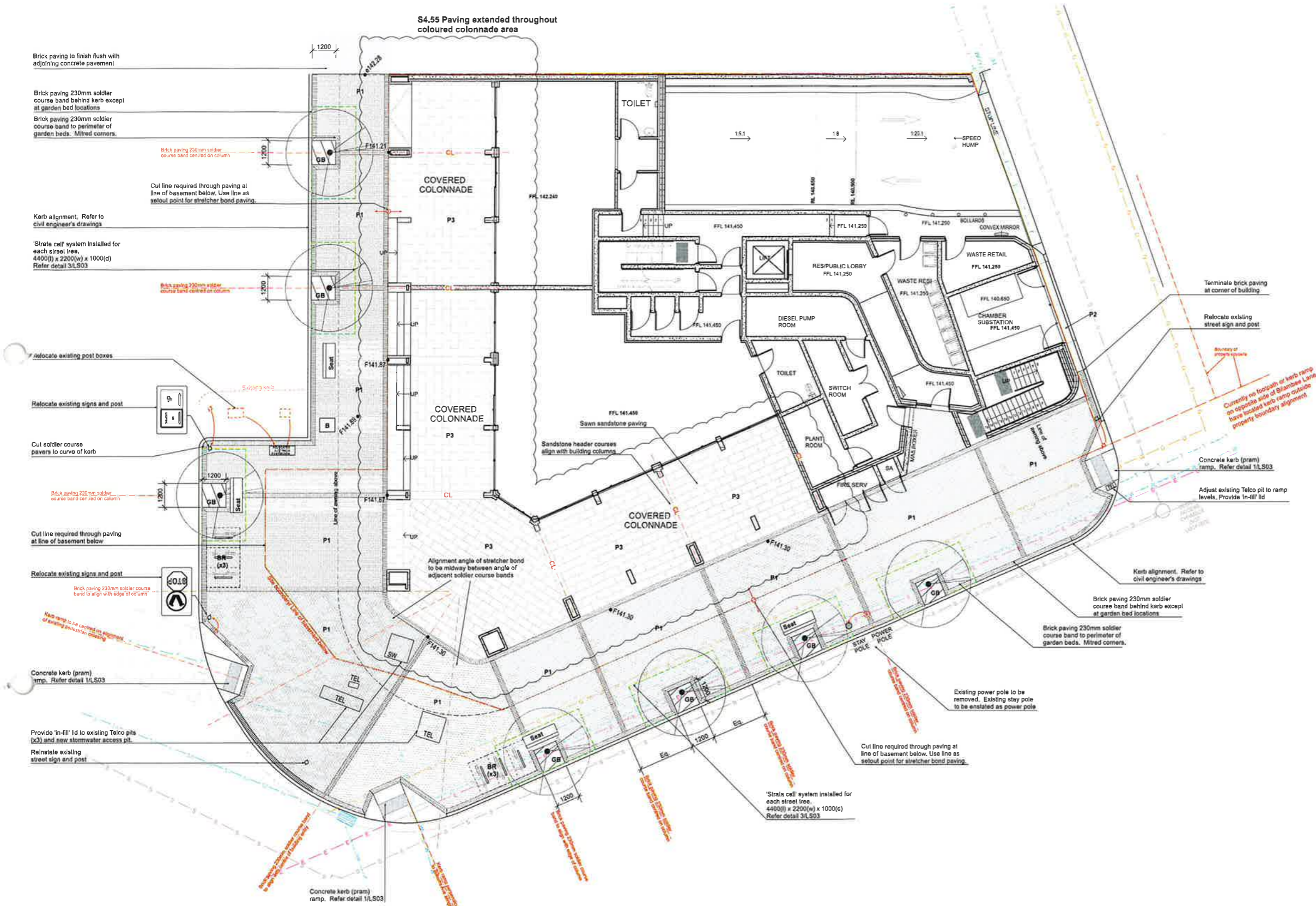
DWG NO.

LS01

ISSUE

A

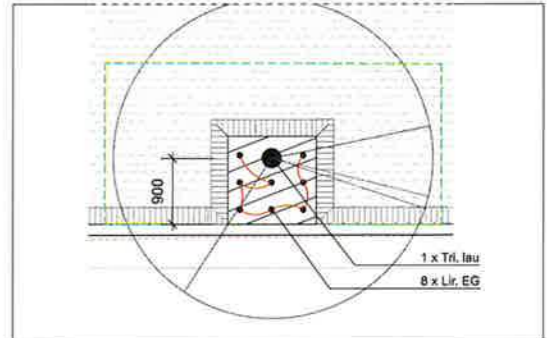
NOTES
REFER TO DETAIL SURVEY FOR SITE IDENTIFICATION, BOUNDARY INFORMATION & LEVELS.
ALL LEVELS AND DIMENSIONS TO BE CONFIRMED ON SITE. IF ANY DISCREPANCIES OCCUR PLEASE NOTIFY THE LANDSCAPE ARCHITECT



1 GROUND FLOOR/ PUBLIC DOMAIN PLAN
1:100@A1

MATERIALS/FIXTURES			
CODE	IMAGE	ITEM	DESCRIPTION
P1		Brick paving	Austral bricks 'Flamier' brick paver Dim: 230(l) x 76(w) x 65(d) mm Colour: Sepia Body paving: Stretcher bond Perimeter courses and banding: Soldier Course
P2		Concrete	In-situ concrete Colour: Off white cement Finish: Broom TBC with Council
P3		Sawn Sandstone	Sandstone Size: 800 x 400 (indicative) Finish: Diamond sawn
Seat		Seating Qty: 4	Street Furniture Australia Classic Plaza DDA Seat CMPS Stainless Steel legs and armrest Jarrah hardwood Batens Subsurface fixing
BR		Bike Rack Qty: 8	Street Furniture Australia Product: BST-03 Material: SS316 Surface fixed
B		Bin Qty: 1	Street Furniture Australia Ecopia Bin Enclosure SS316 Colour and fixing TBC by Council
TGSI		Tactile Indicators	DTAC Stainless Steel Classic PVD Colour: Black (Installation to comply with Australian Standards)

Note: All materials and fixtures to be co-ordinated with Northern Beaches Public Domain Guidelines



2 TYPICAL GARDEN BED (GB) PLANTING SETOUT
1:50@A1

PLANT SCHEDULE: PUBLIC DOMAIN						
KEY	SPECIES	COMMON NAME	MATURE HEIGHT	QTY	SPACING	POT SIZE
Trl. lau	<i>Tristanopsis laurina</i>	Water Gum	8m	7*	As shown	200L
Lir. EG	<i>Liriope 'Evergreen Giant'</i>	Liriope	0.6m	56**	550	140mm pot

* 1 per garden bed
** 8 per garden bed area

NOTE:
Refer to civil engineer's drawings for:
- Kerb and gutter alignments, setouts and levels
- Extent of works to road pavement
- Requirements for all base slabs and joints

NOT ISSUED FOR CONSTRUCTION: S4.55 ONLY

melissa wilson
landscape architects

e melissa@melissawilson.com.au
www.melissawilson.com.au

ISSUE AMENDMENT
A S4.55 ISSUE

DATE
24.07.23

SCALE: 1:100@A1
DRAWN: GM
CLIENT: THE BOSS NSW P/L

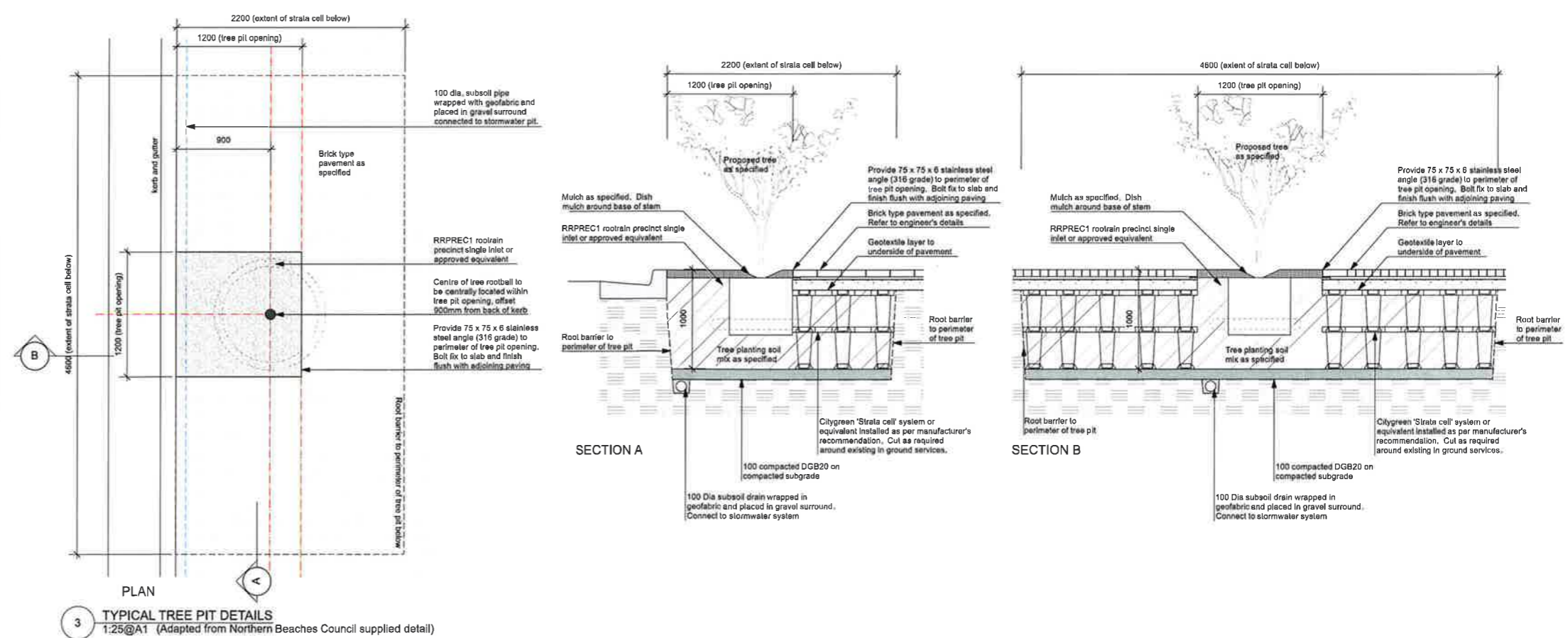
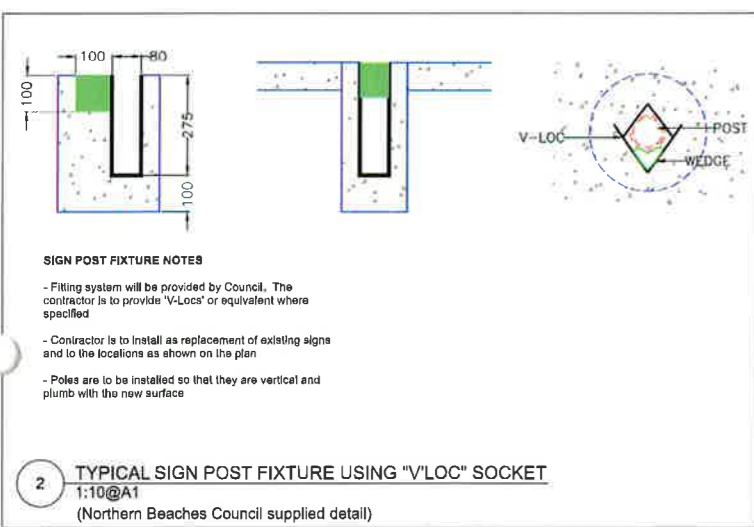
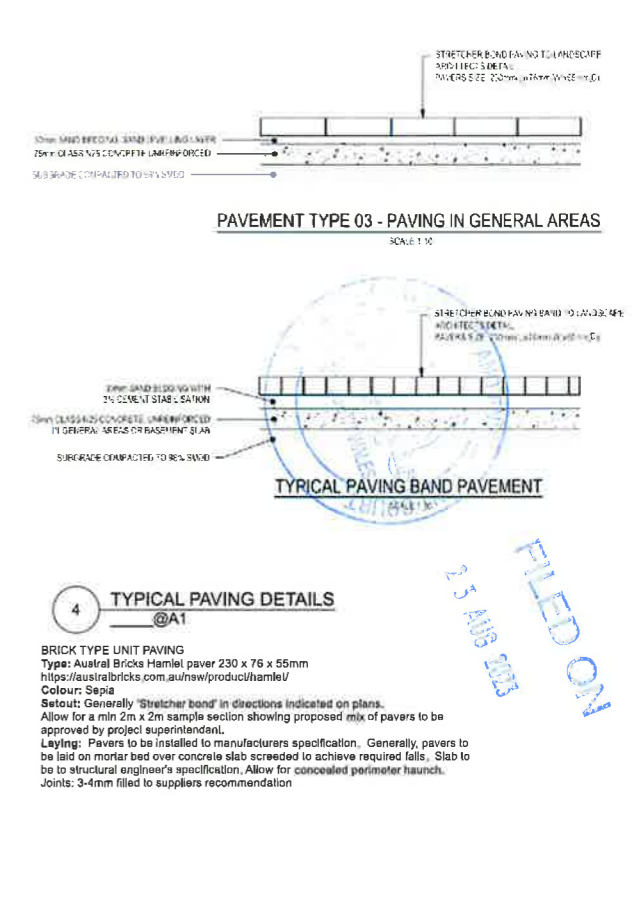
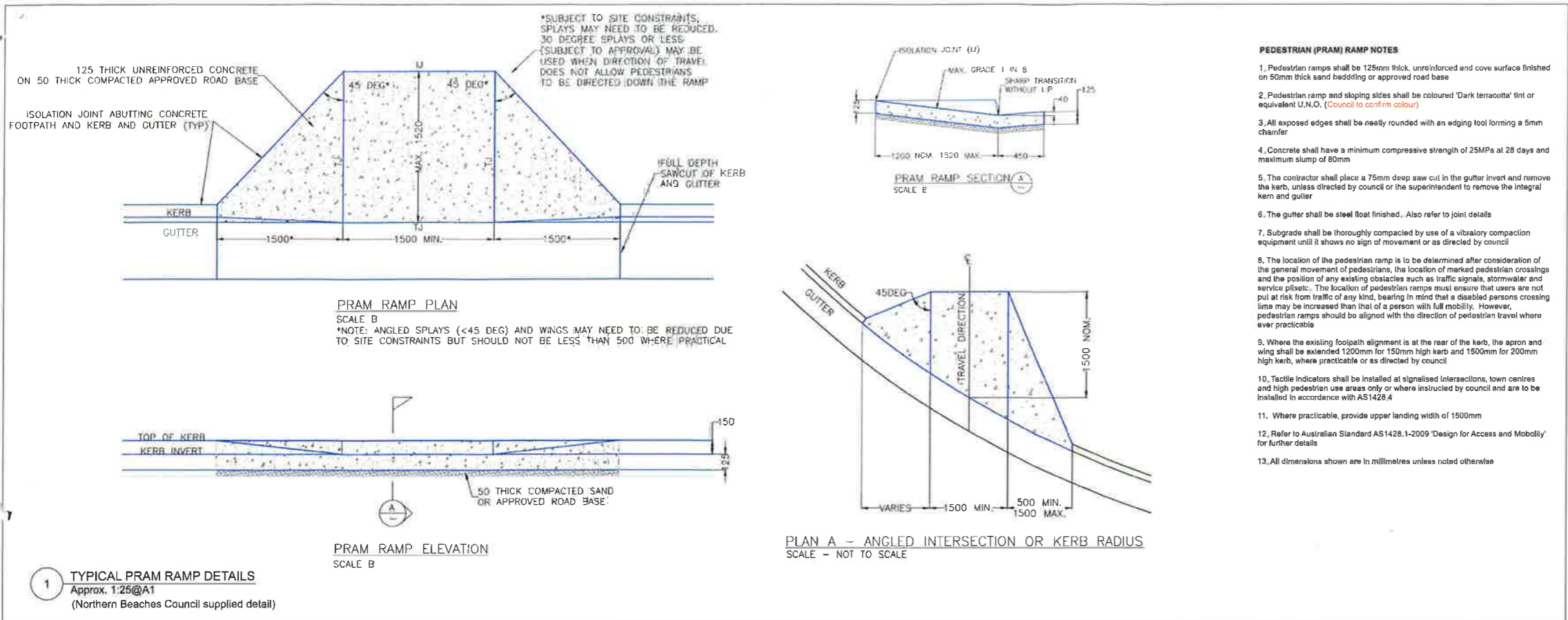
DRAWING TITLE
Landscape: GF/ Public Domain Plan

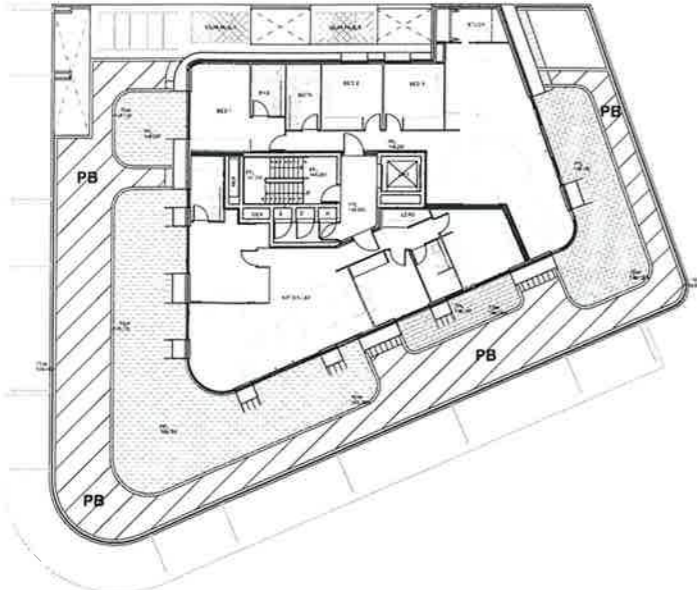
PROJECT
1 BILAMBEE AVENUE, BILGOLA PLATEAU

DWG NO.
LS02

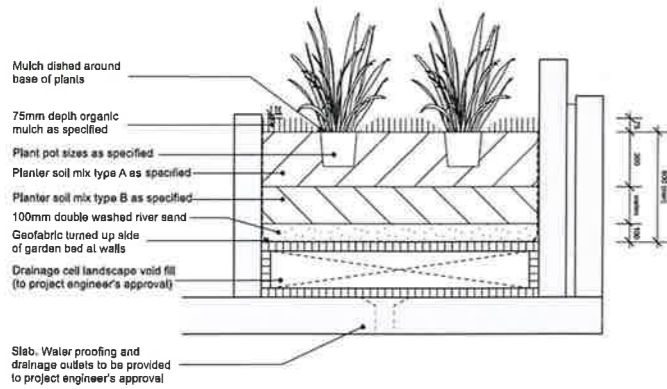
ISSUE
A

NOTES
REFER TO DETAIL SURVEY FOR SITE IDENTIFICATION, BOUNDARY INFORMATION & LEVELS
ALL LEVELS AND DIMENSIONS TO BE CONFIRMED ON SITE. IF ANY DISCREPANCIES OCCUR PLEASE NOTIFY THE LANDSCAPE ARCHITECT



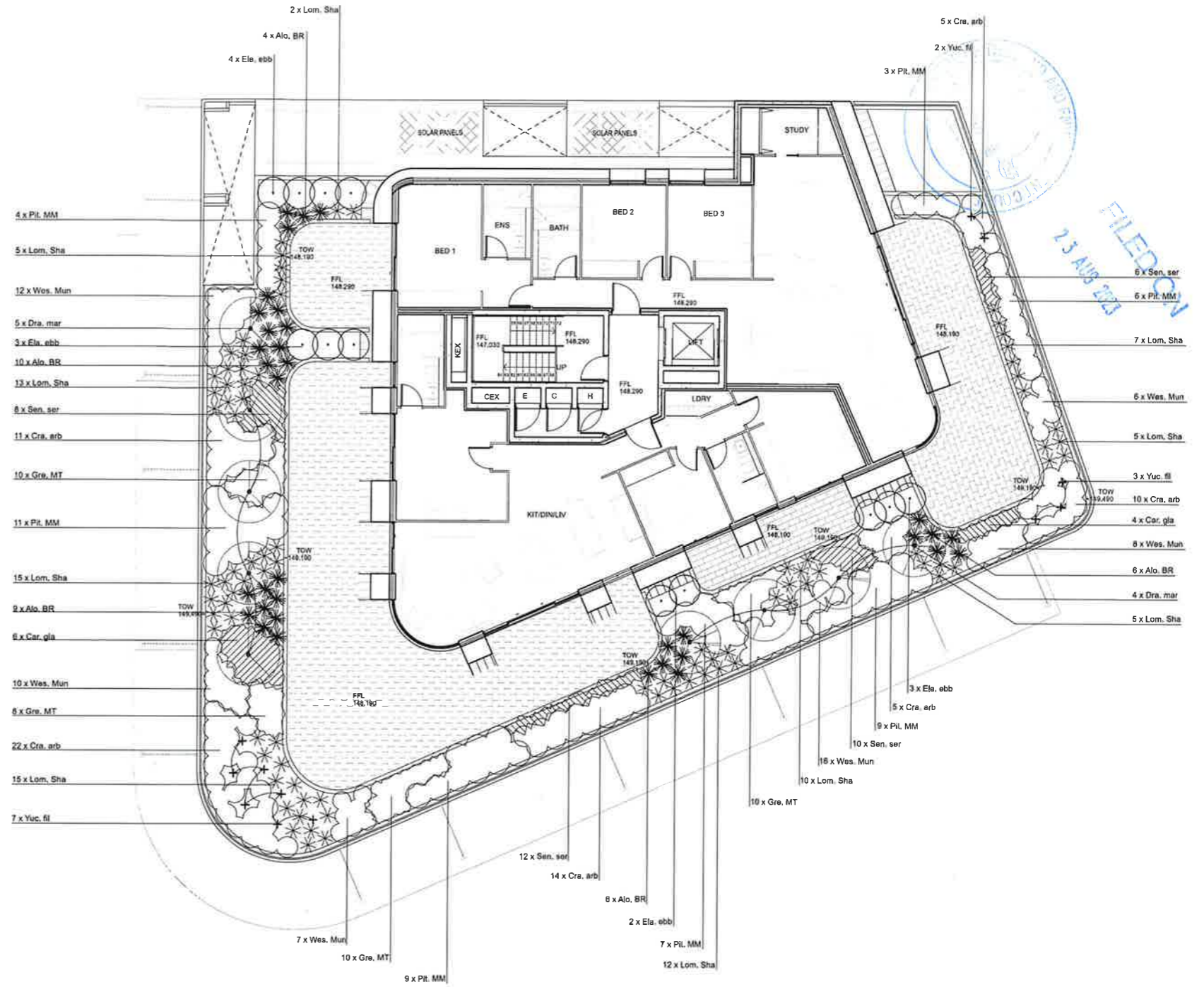


1 LEVEL 2 LANDSCAPE MATERIALS
1:200@A1



NOTE: refer to architect's documentation for planter box setout and construction

3 LEVEL 2 PLANTER BOX (PB) TYPICAL DETAIL
1:20@A1



2 LEVEL 2 PLANTING PLAN
1:100@A1

KEY	SPECIES	COMMON NAME	MATURE HEIGHT	QTY	POT SIZE
Alo. BR	<i>Aloe 'Big Red'</i>	Aloe	0.8m		5L
Car. gla	<i>Carpobrotus glaucescens</i>	Pigface	spillover		150mm pot
Cre. arb	<i>Crassula arborescens</i>	Crassula	0.8m		5L
Dra. mar	<i>Dracaena marginata</i>	Dracaena	3m		100L
Ela. ebb	<i>Elaeagnus ebbengelii</i>	Silverberry	2m		5L
Gre. MT	<i>Grevillea 'Mt Tamboritha'</i>	Woolly Grevillea	g'cover		150mm pot
Lom. Sha	<i>Lomandra 'Sera'</i>	Mat Rush	0.8m		150mm pot
Pil. MM	<i>Pittosporum 'Miss Muffet'</i>	Miss Muffet	0.8m		5L
Sen. ser	<i>Senecio serpens</i>	Chalk Sticks	g'cover		150mm pot
Wes. Mun	<i>Westringia 'Mundi'</i>	Coastal Rosemary	0.5m		150mm pot
Yuc. fil	<i>Yucca filamentosa</i>	Adam's Needle	1m		25L

NOT ISSUED FOR CONSTRUCTION: S4.55 ONLY

