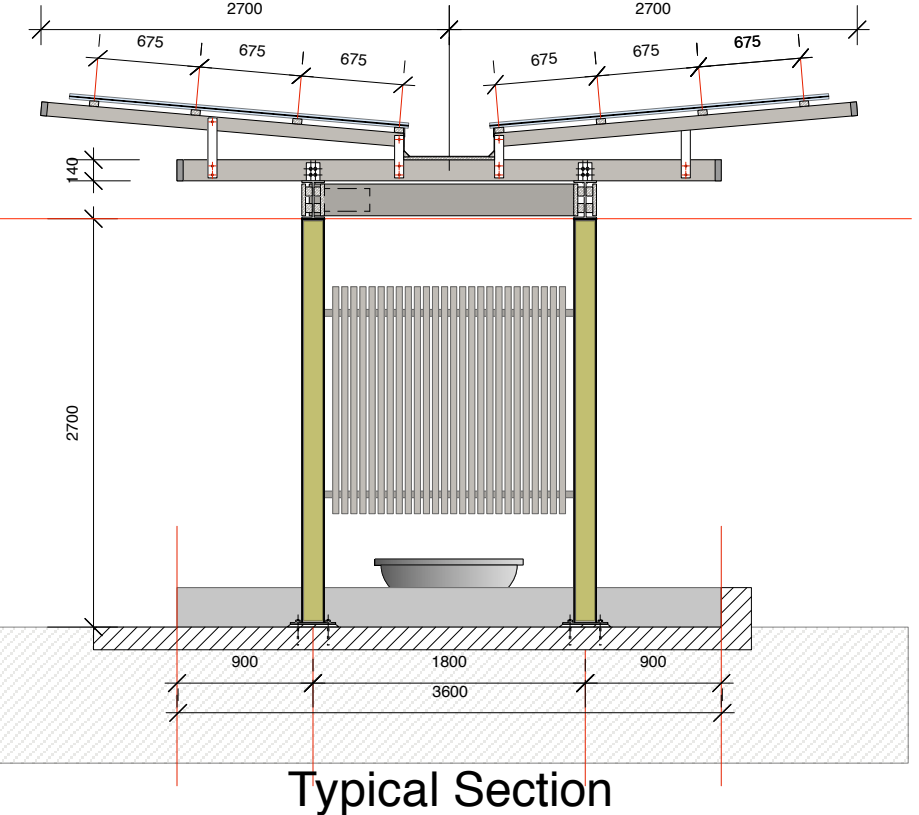


Schedule of Materials

- Base Plate to columns - Gal. mild steel fitted off existing concrete driveway with cemset bolts. Install 'non-shrink' grout to under baseplate.
- Steel Columns - 150 UC with 25mm Blackbutt between flanges
- Steel Beams - 250 UB with 25mm Blackbutt between flanges.
- Horizontal Timber Rafters - 140x45x2x3600 Blackbutt with 10mm spacing for steel fixing brackets.
- Inclined Timber Rafters - 90x45x2x2400 Blackbutt with 10mm spacing for steel fixing brackets
- Roof Battens - 90x45 Blackbutt
- Roof - zincalume custom orb.
- Gutter - Brake press zincalume on marine ply
- DP - Gal. chains fitted off gutters
- Water Pot + Sump - TBA
- Timber Screen - 40x40 Blackbutt battens @ 60mm spacing.
- All timberwork to be clear oil finish
- End grain of horizontal and inclined rafters are to be painted with black bituminous paint for a minimum 40mm.
- All steelwork to be hot dipped gal. and painted with approved gal. paint after welding on site. Exposed steel elements to be painted matt black (monument).
- All exposed bolts to be 316 stainless steel
- Lighting to Future Details



Andrew + Melissa Walsh
21 Ruskin Rowe Avalon

Carport Details
11th November 2019
Scale 1 : 50 @ A1