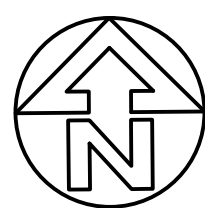


PROPOSED ACCESS ROAD DEVELOPMENT FRENCHS FOREST BUSHLAND CEMETERY 1 HAKEA AVENUE, FRENCHS FOREST 2085



SCHEDULE OF DRAWINGS

001	LOCATION PLAN AND DRAWING SCHEDULE
100	CONCEPT EROSION AND SEDIMENT CONTROL PLAN
101	CONCEPT EROSION AND SEDIMENT CONTROL DETAILS
110	CONCEPT CATCHMENT PLAN
200	CONCEPT STORMWATER MANAGEMENT PLAN
201	CONCEPT SITEWORK PLAN
202	ROAD CROSS SECTIONS PLAN
300	TYPICAL DETAILS AND SECTIONS SHEET

LOCATION PLAN-COURTESY OF SPATIAL INFORMATION EXCHANGE
N.T.S.

NOT FOR CONSTRUCTION

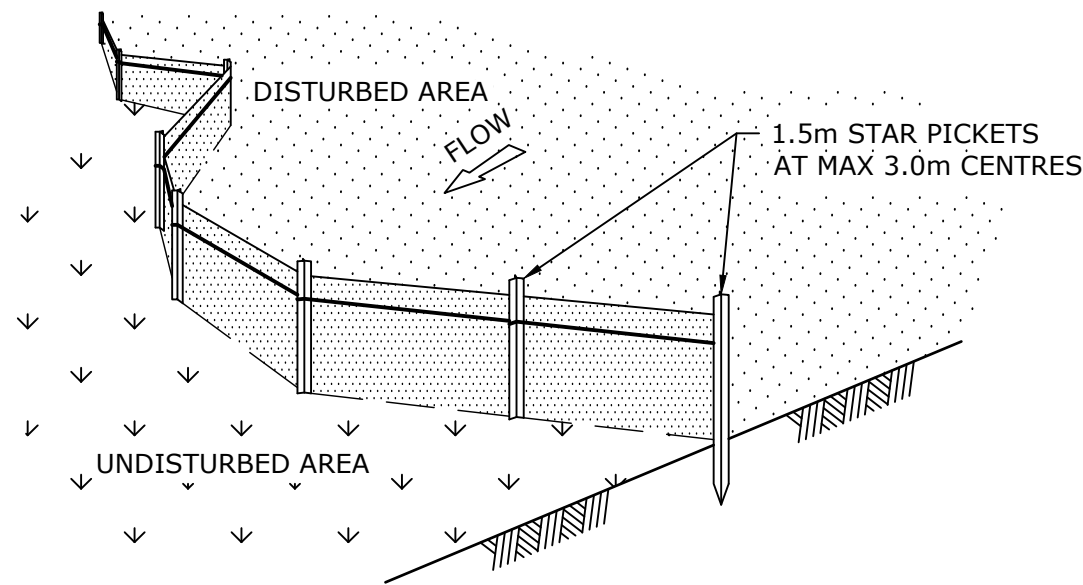


tonkin.com.au

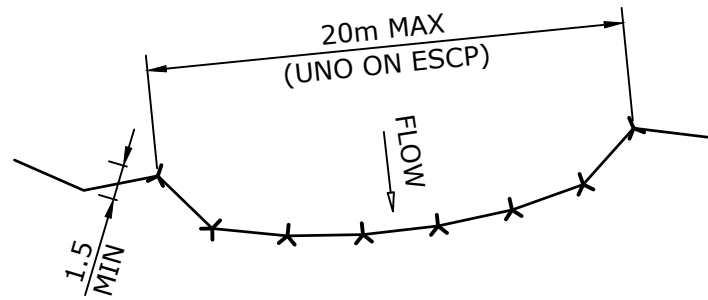
B	DA ISSUE	30.03.20	KL	IR		KL
A	PRELIMINARY ISSUE	10.09.19	CV	IR		CV
REV	AMENDMENT / REASON FOR ISSUE	DATE	DES.	DWN.	DWGCHK	VERIFIED APPROVED

LOCATION PLAN & DRAWING SCHEDULE

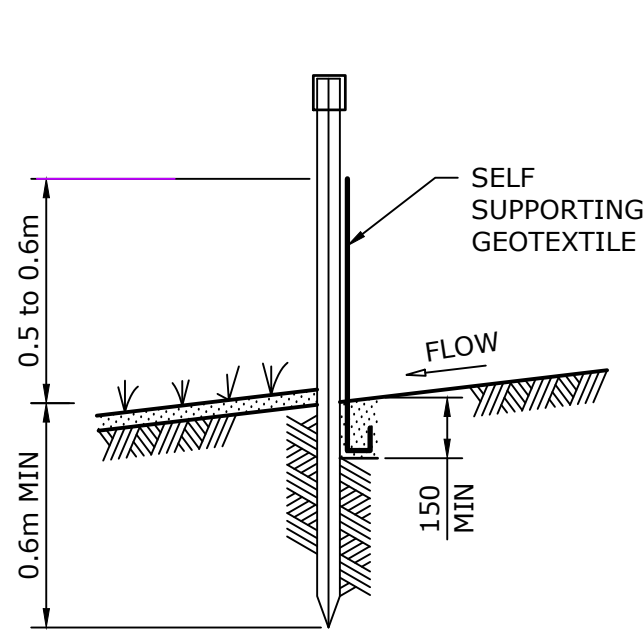
SHEET SIZE SCALE:	FILENAME:	JOB NUMBER	SHEET NUMBER	REVISION
A1 N.T.S.	20190763_001 INDEX.DWG	20190763	001	B



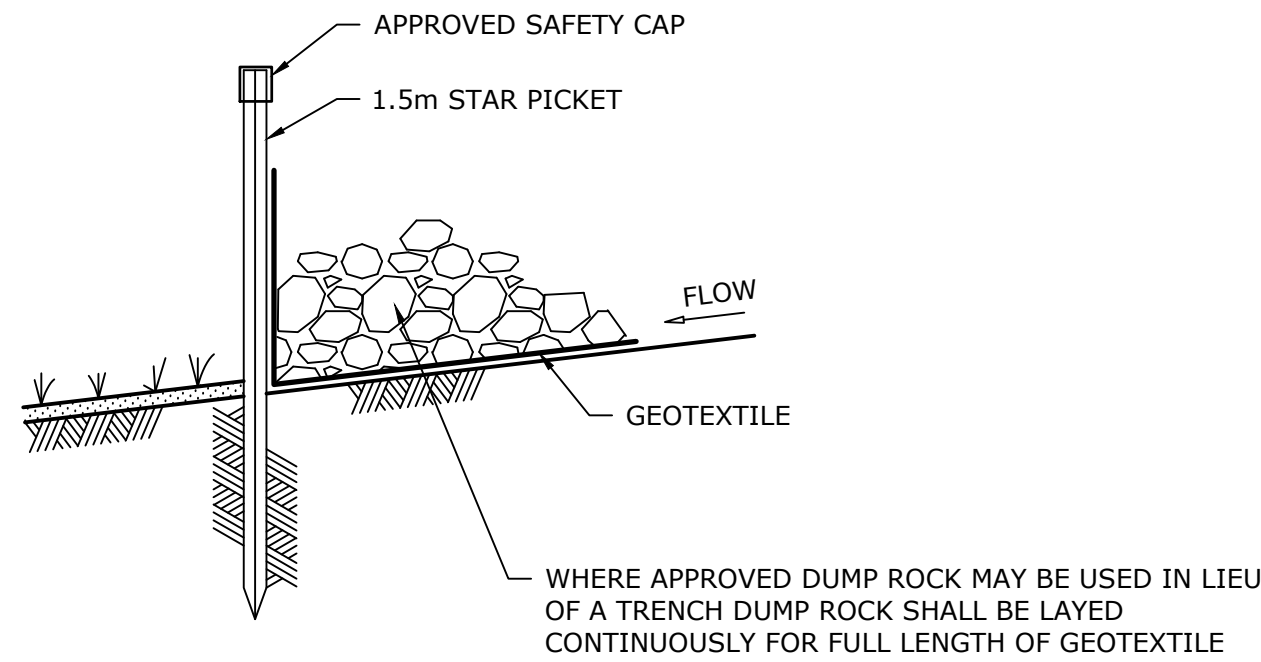
DETAIL - 1



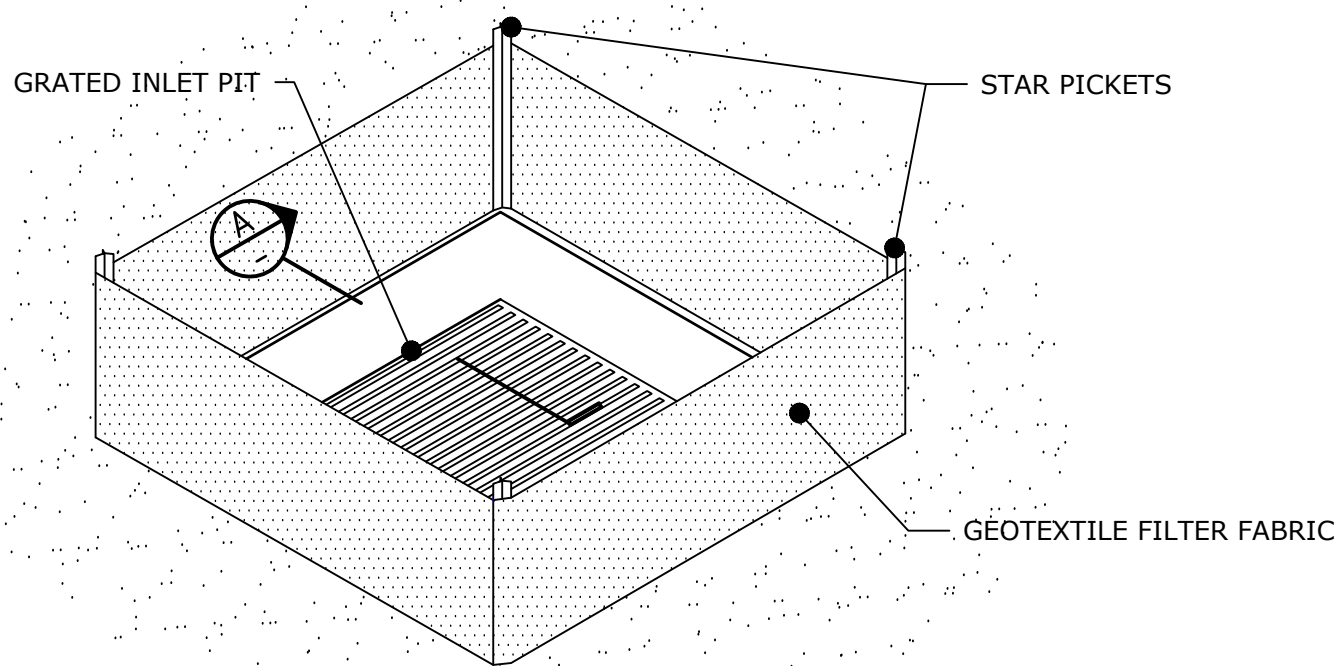
DETAIL - 2



STANDARD FENCE INSTALLATION & ANCHOR DETAIL

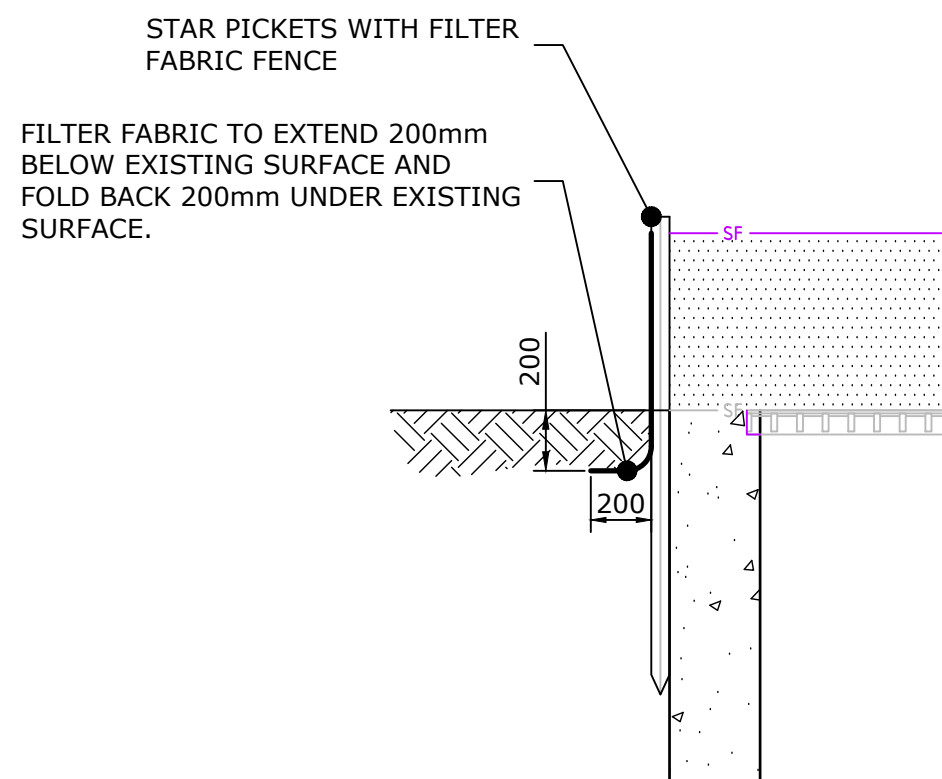


ALTERNATIVE FENCE INSTALLATION AND ANCHOR DETAIL



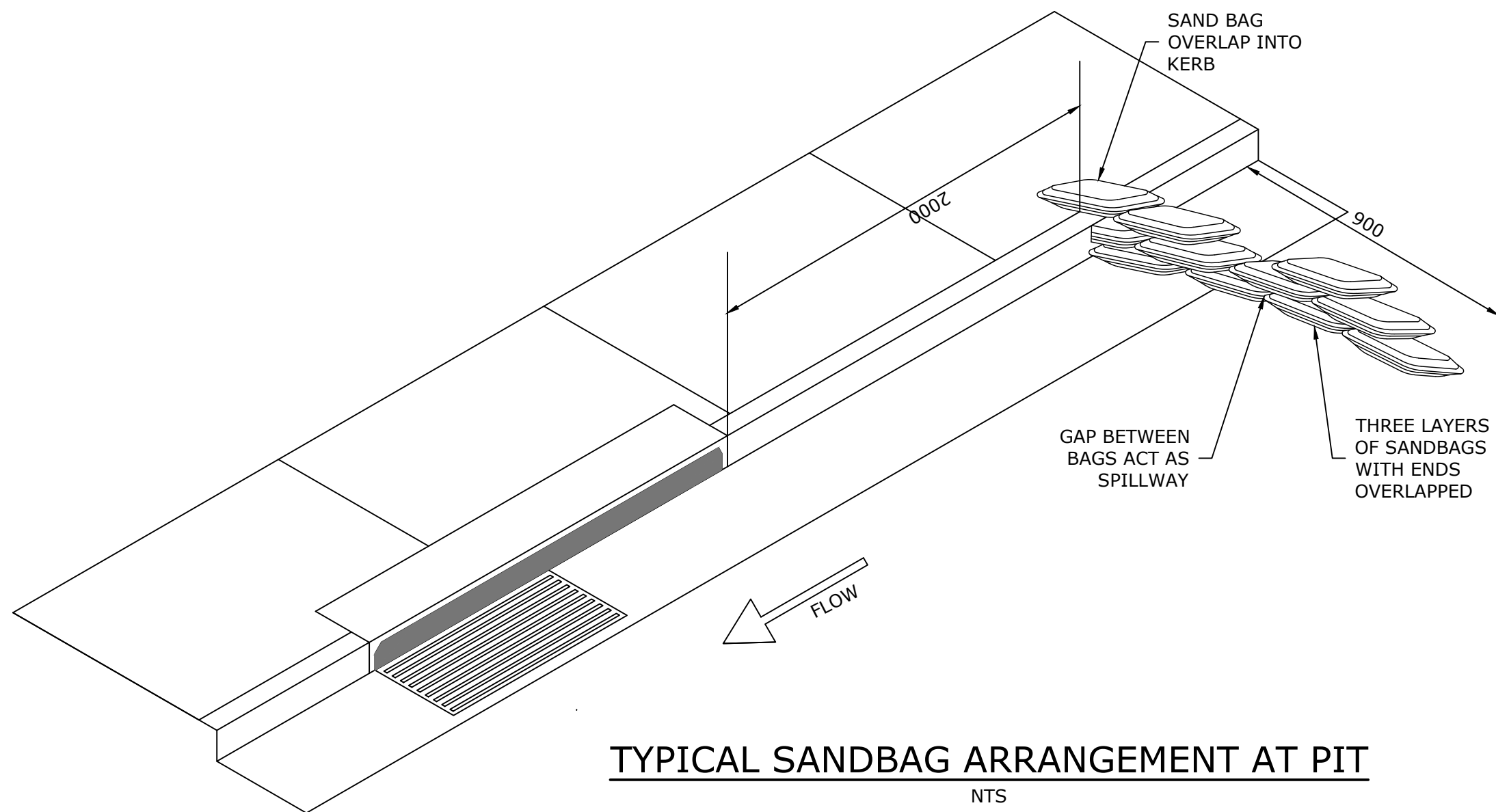
GEOTEXTILE INLET FILTER SEDIMENT TRAP

NTS



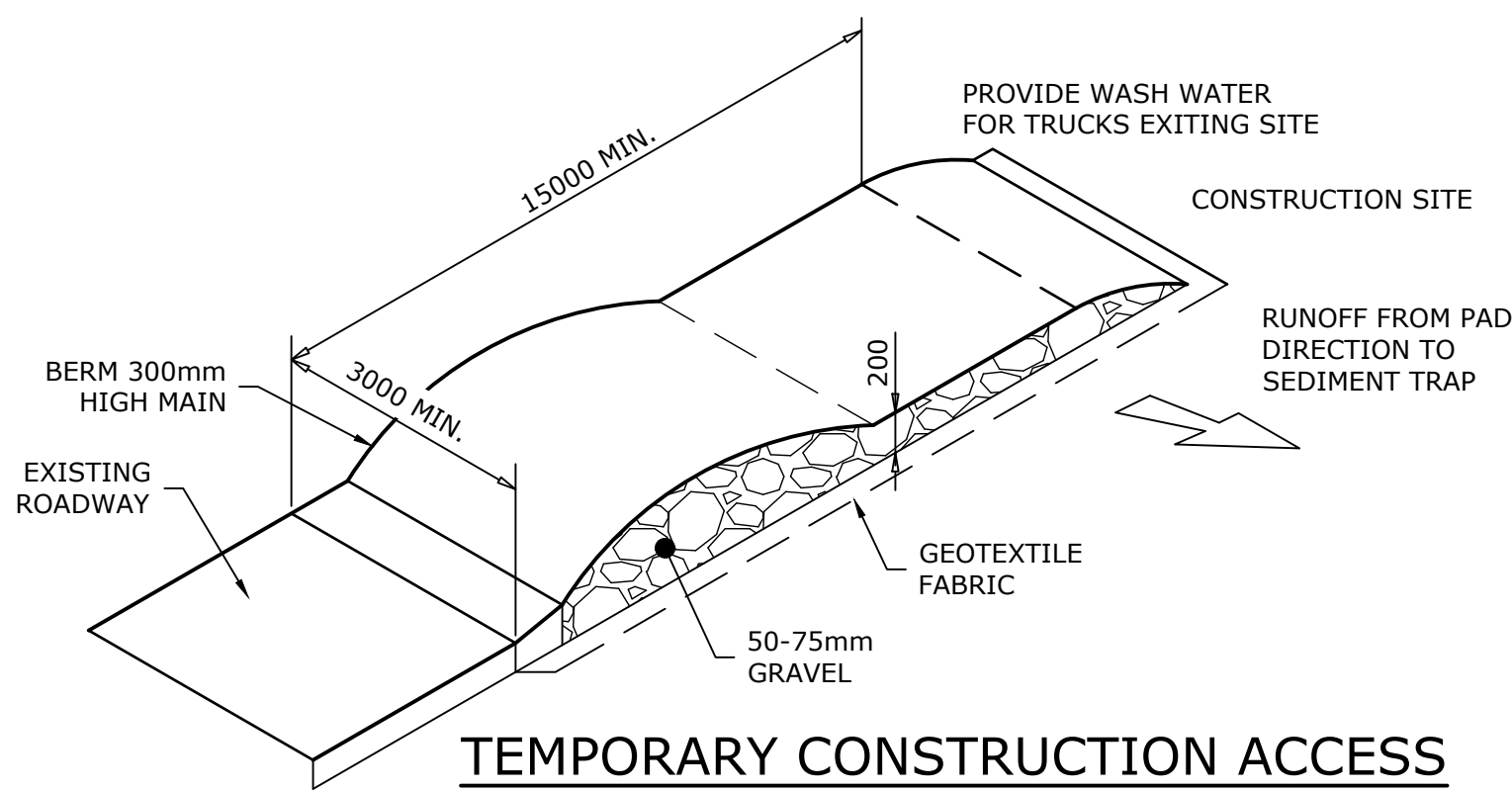
SECTION A

NTS



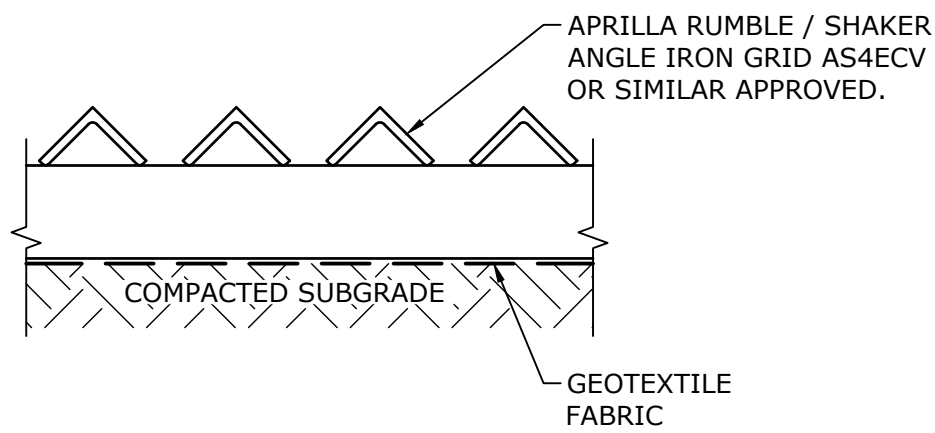
TYPICAL SANDBAG ARRANGEMENT AT PIT

NTS



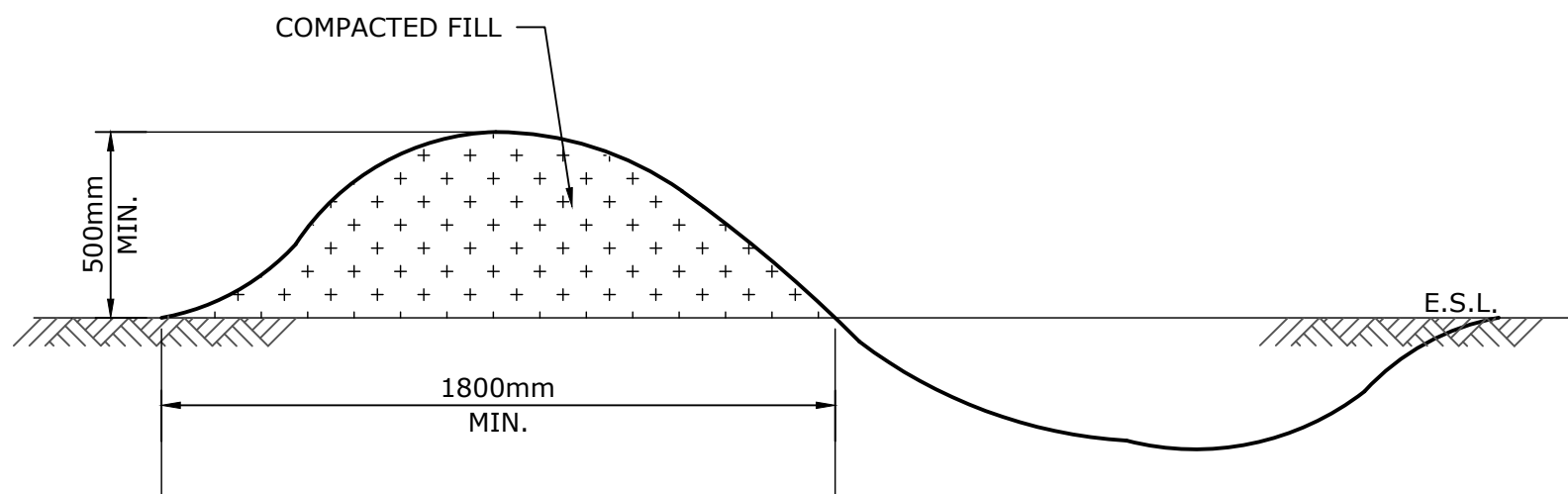
TEMPORARY CONSTRUCTION ACCESS

NTS

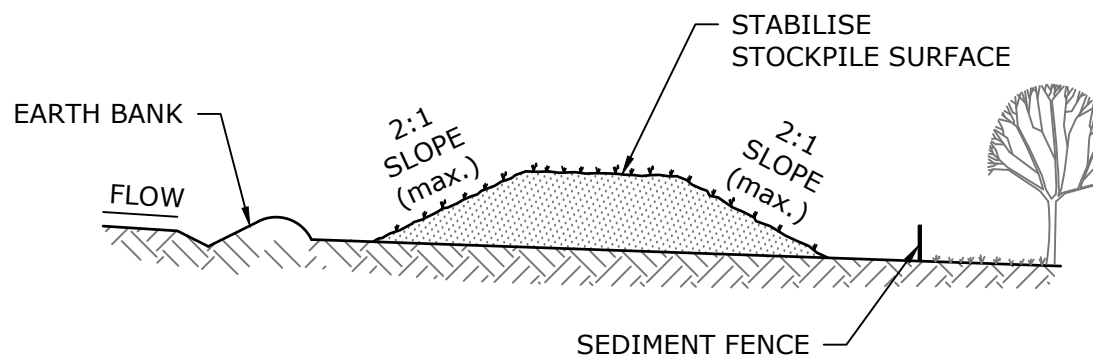


VEHICLE SHAKER GRID

NTS



DIVERSION SWALE



STOCKPILE

THIS DRAWING IS TO BE VIEWED IN COLOUR AS SOME FEATURES / SYMBOLS ARE DIFFERENTIATED BY COLOUR. DRAWING NOT TO BE RELIED ON IF PRINTED IN GREYSCALE.

NOT FOR CONSTRUCTION

NORTHERN METROPOLITAN CEMETERIES TRUST

PROPOSED ACCESS ROAD DEVELOPEMENT
BUSHLAND CEMETERY, 1 HAKEA AVENUE
EROSION AND SEDIMENT CONTROL DETAILS

FILENAME:	PROJECT NUMBER	DRAWING NUMBER	REVISION
20190763_100 EROSION & SEDIMENT.DWG	20190763	101	B

SHEET SIZE					
A1					
100mm ON ORIGINAL DRAWING - DO NOT SCALE DRAWING					
					COORDS: ALL LEVELS TO A.H.D. DATUM: MGA94 ZONE 56
					SCALE: AS SHOWN
					SURVEYED:TSS SURVEY DATE:19.10.2018
					APPROVED / PROJECT LEADER
B	DA ISSUE	30.03.20	KL	IR	C.VELESKI
A	PRELIMINARY ISSUE	10.09.19	CV	IR	
REV	AMENDMENT / REASON FOR ISSUE	DATE	DES.	DWN.	

PUBLIC UTILITIES:
THE SERVICES SHOWN ARE DERIVED FROM PLANS OBTAINED FROM THE RELEVANT SERVICE AUTHORITIES. IT IS THE RESPONSIBILITY OF THE CONTRACTOR TO ARRANGE WITH THE RELEVANT SERVICE AUTHORITIES FOR CONFIRMATION OF SERVICES AND THEIR LOCATION BEFORE EXCAVATION WORK COMMENCES.

tonkin
tonkin.com.au



LEGEND

IMPERVIOUS AREA TO STORMFILTER
AREA = 924m²

PERVIOUS AREA TO STORMFILTER
AREA = 144m²

IMPERVIOUS AREA BYPASSING STORMFILTER
AREA = 206m²

PERVIOUS AREA BYPASSING STORMFILTER
AREA = 110m²

SUPPLEMENTARY AREA BYPASSING
STORMFILTER
AREA = 35m²

IMPERVIOUS ROOF TO STORMFILTER
AREA = 535m²

IMPERVIOUS AREA NOT INCLUDED IN
DEVELOPMENT ARE CALCULATION
FOR STORMFILTER
AREA = 530m²

EXISTING PERVIOUS AREA TO BE
REVITALISED
AREA = 672m²

024812

1:200 (A1); 1:400 (A3)

100mm ON ORIGINAL DRAWING - DO NOT SCALE DRAWING

SHEET SIZE

A1

COORDS: ALL LEVELS TO A.H.D.
DATUM: MGA94 ZONE 56

SCALE: 1:200

SURVEYED:TSS
SURVEY DATE:19.10.2018

APPROVED / PROJECT LEADER

B DA ISSUE

30.03.20 KL IR

A PRELIMINARY ISSUE

10.09.19 CV IR

REV AMENDMENT / REASON FOR ISSUE

DATE DES. DWN.

C.VELESKI

© TONKIN CONSULTING

PUBLIC UTILITIES:
THE SERVICES SHOWN ARE DERIVED FROM PLANS OBTAINED FROM THE RELEVANT SERVICE AUTHORITIES. IT IS THE RESPONSIBILITY OF THE CONTRACTOR TO ARRANGE WITH THE RELEVANT SERVICE AUTHORITIES FOR CONFIRMATION OF SERVICES AND THEIR LOCATION BEFORE EXCAVATION WORK COMMENCES.

tonkin

tonkin.com.au

NOT FOR CONSTRUCTION

NORTHERN METROPOLITAN CEMETERIES TRUST

PROPOSED ACCESS ROAD DEVELOPEMENT

BUSHLAND CEMETERY, 1 HAKEA AVENUE

CATCHMENT PLAN

FILENAME:

20190763_110 CATCHMENT.DWG

PROJECT NUMBER

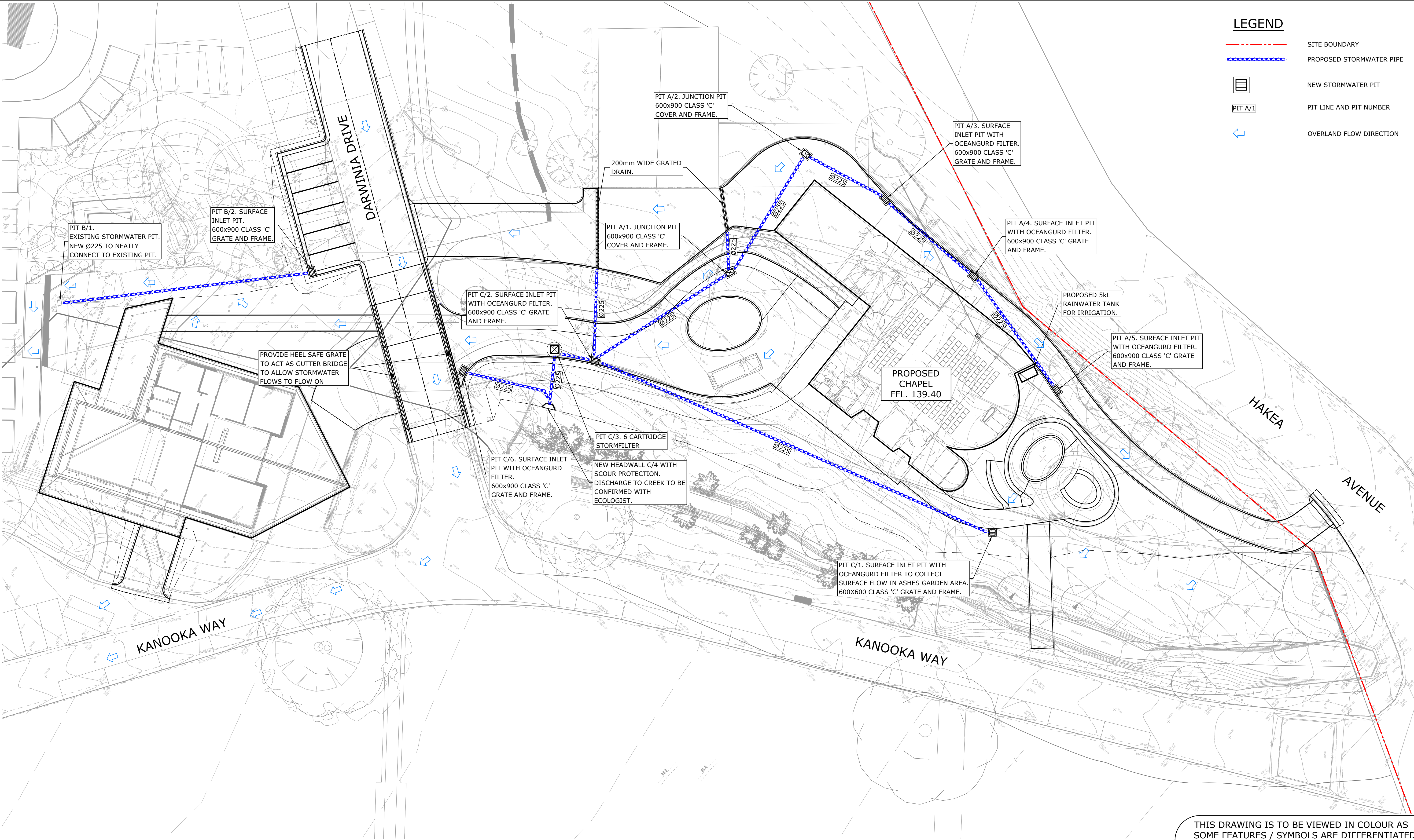
20190763

DRAWING NUMBER

110

REVISION

B



LEGEND

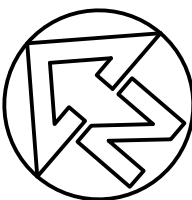
- SITE BOUNDARY
- PROPOSED STORMWATER PIPE
- NEW STORMWATER PIT
- PIT A/1 PIT LINE AND PIT NUMBER
- OVERLAND FLOW DIRECTION

0 2 4 8 12
1:200 (A1); 1:400 (A3)

100mm ON ORIGINAL DRAWING - DO NOT SCALE DRAWING

SHEET SIZE
A1

				COORDS: ALL LEVELS TO A.H.D. DATUM: MGA94 ZONE 56	
				SCALE: 1:200	
				SURVEYED:TSS SURVEY DATE:19.10.2018	
C		DA ISSUE	30.03.20	KL	IR
B		REVISED PRELIMINARY ISSUE	11.11.19	CV	CV
A		PRELIMINARY ISSUE	10.09.19	CV	IR
REV	AMENDMENT / REASON FOR ISSUE	DATE	DES.	DWN.	C.VELESKI



PUBLIC UTILITIES:

THE SERVICES SHOWN ARE DERIVED FROM PLANS OBTAINED FROM THE RELEVANT SERVICE AUTHORITIES. IT IS THE RESPONSIBILITY OF THE CONTRACTOR TO ARRANGE WITH THE RELEVANT SERVICE AUTHORITIES FOR CONFIRMATION OF SERVICES AND THEIR LOCATION BEFORE EXCAVATION WORK COMMENCES.



tonkin.com.au

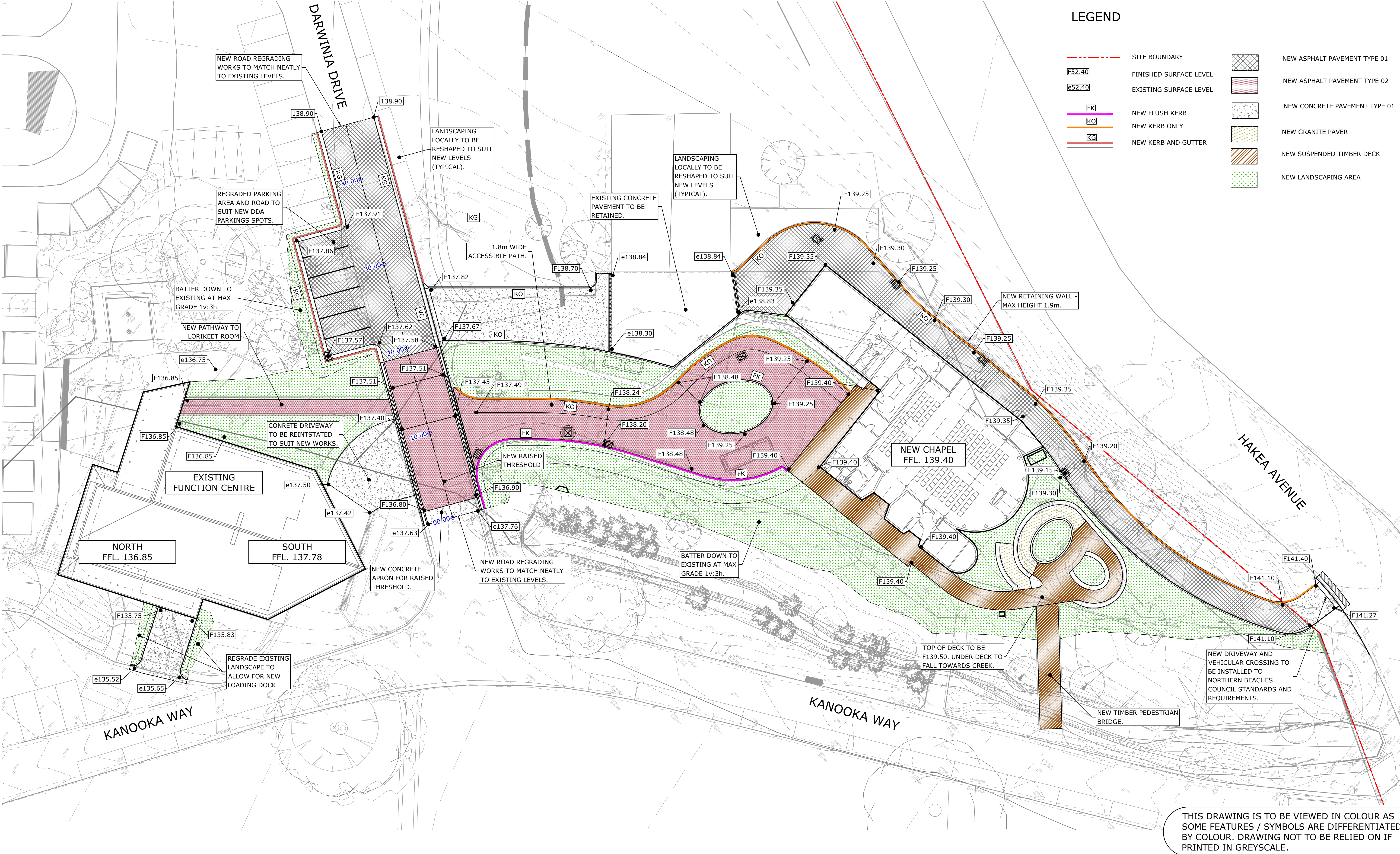
NOT FOR CONSTRUCTION

NORTHERN METROPOLITAN CEMETERIES TRUST

PROPOSED ACCESS ROAD DEVELOPEMENT
BUSHLAND CEMETERY, 1 HAKEA AVENUE
STORMWATER MANAGEMENT PLAN

FILENAME:	PROJECT NUMBER	DRAWING NUMBER	REVISION
20190763_200 STORMWATER.DWG	20190763	200	C

THIS DRAWING IS TO BE VIEWED IN COLOUR AS SOME FEATURES / SYMBOLS ARE DIFFERENTIATED BY COLOUR. DRAWING NOT TO BE RELIED ON IF PRINTED IN GREyscale.



024812

1:200 (A1); 1:400 (A3)

100mm ON ORIGINAL DRAWING - DO NOT SCALE DRAWING

SHEET SIZE

A1

COORDS: ALL LEVELS TO A.H.D.
DATUM: MGA94 ZONE 56

SCALE: 1:200

SURVEYED:TSS
SURVEY DATE:19.10.2018

APPROVED / PROJECT LEADER

C.VELESKI

C DA ISSUE

30.03.20

KL

IR

B REVISED PRELIMINARY ISSUE

11.11.19

CV

CV

A PRELIMINARY ISSUE

10.09.19

CV

IR

REV AMENDMENT / REASON FOR ISSUE

DATE

DES.

DWN.

© TONKIN CONSULTING

PUBLIC UTILITIES:

THE SERVICES SHOWN ARE DERIVED FROM PLANS OBTAINED FROM THE RELEVANT SERVICE AUTHORITIES. IT IS THE RESPONSIBILITY OF THE CONTRACTOR TO ARRANGE WITH THE RELEVANT SERVICE AUTHORITIES FOR CONFIRMATION OF SERVICES AND THEIR LOCATION BEFORE EXCAVATION WORK COMMENCES.

tonkin

tonkin.com.au

NOT FOR CONSTRUCTION

NORTHERN METROPOLITAN CEMETERIES TRUST

PROPOSED ACCESS ROAD DEVELOPEMENT

BUSHLAND CEMETERY, 1 HAKEA AVENUE

SITEWORKS PLAN

FILENAME:

20190763_201 SITEWORKS PLAN.DWG

PROJECT NUMBER

20190763

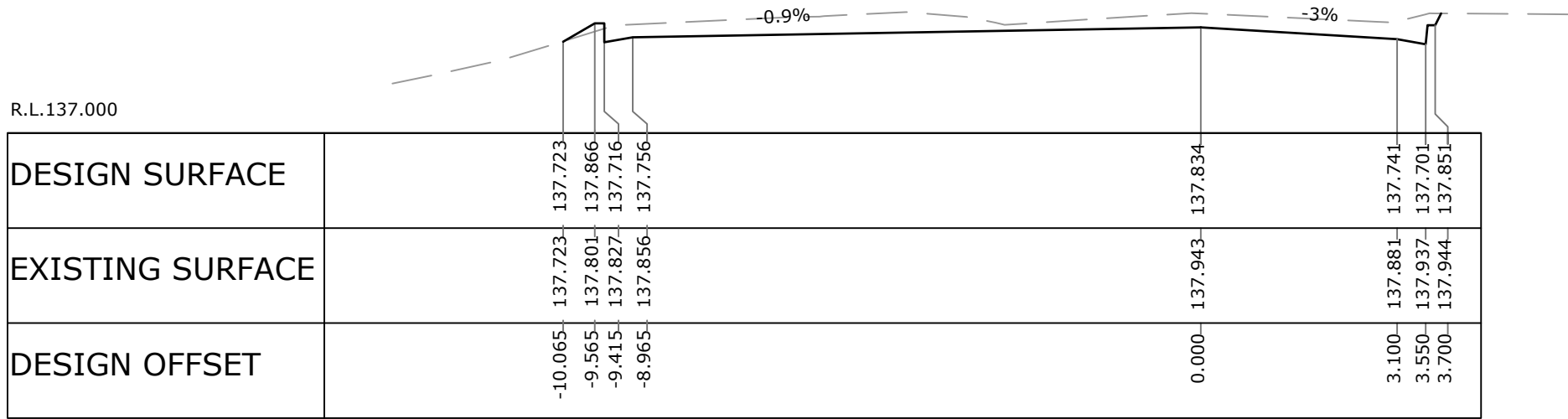
DRAWING NUMBER

201

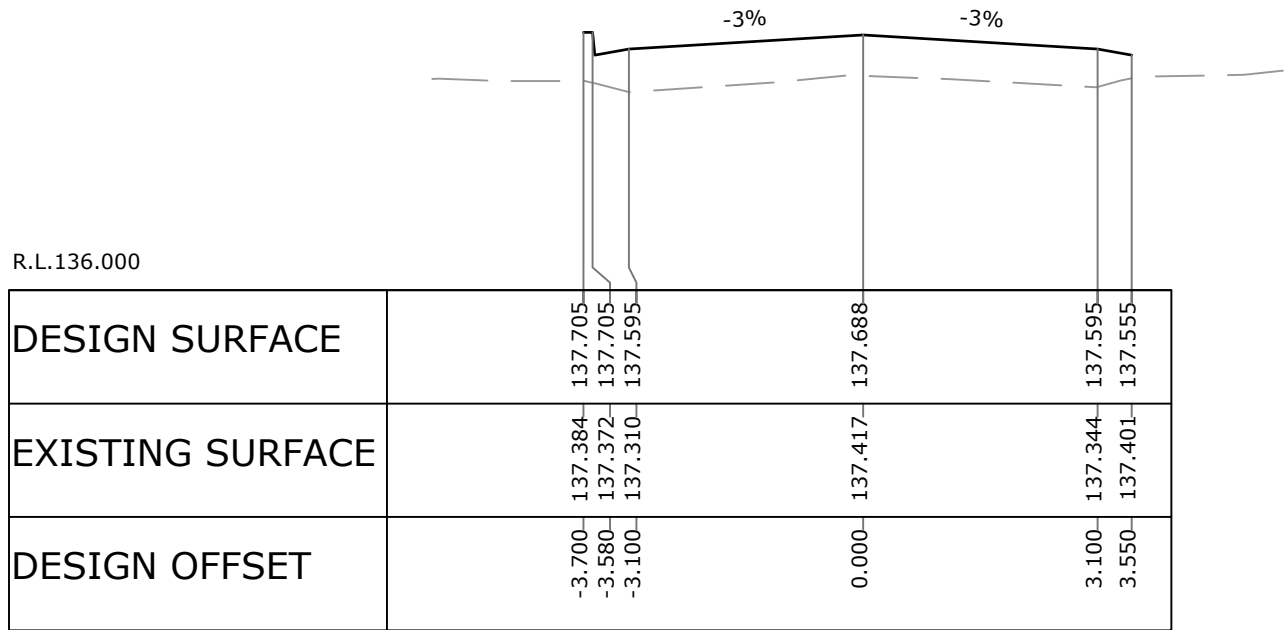
REVISION

C

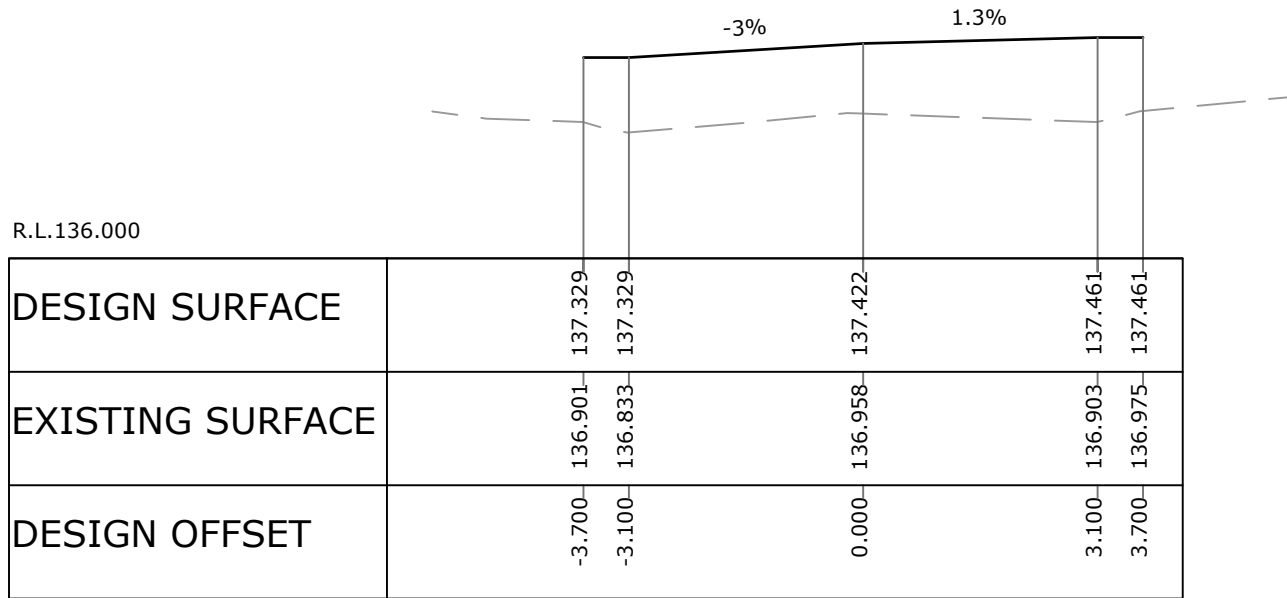
V:\2019\20190763 FRENCHES FOREST BUSHLAND CEMETERY - TAYLOR LAUDER BERSTEN\3_DEVELOPMENT\1 ACAD\01 DWG\20190763_201 SITEWORKS PLAN.DWG -PVT- (27-03-20 2:57:53PM)



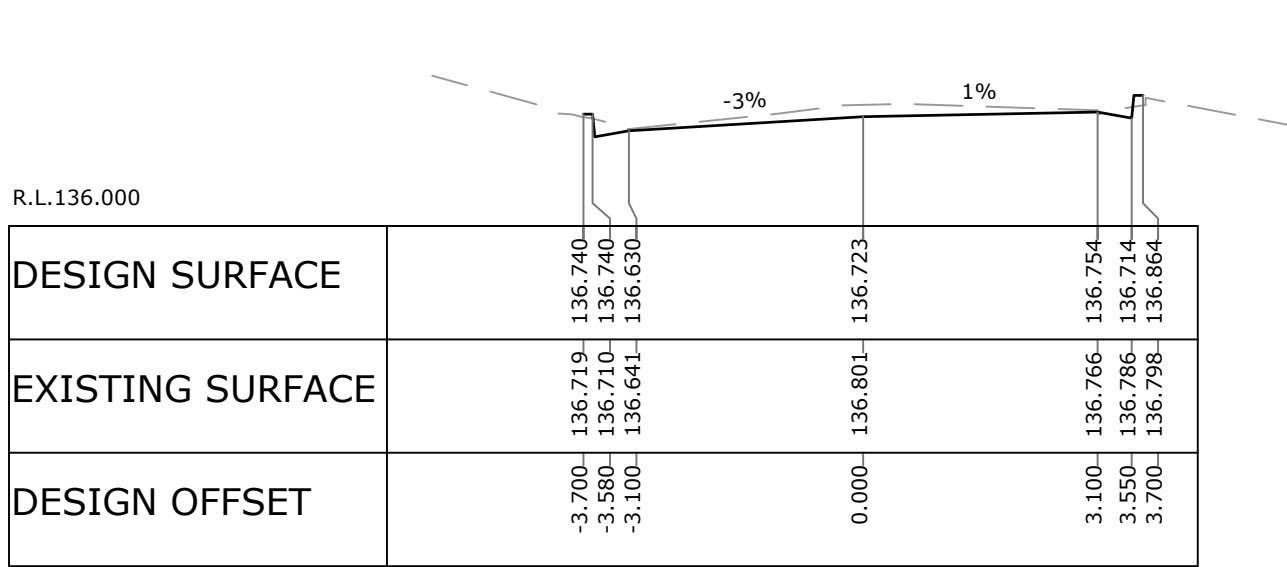
CH. 30.000



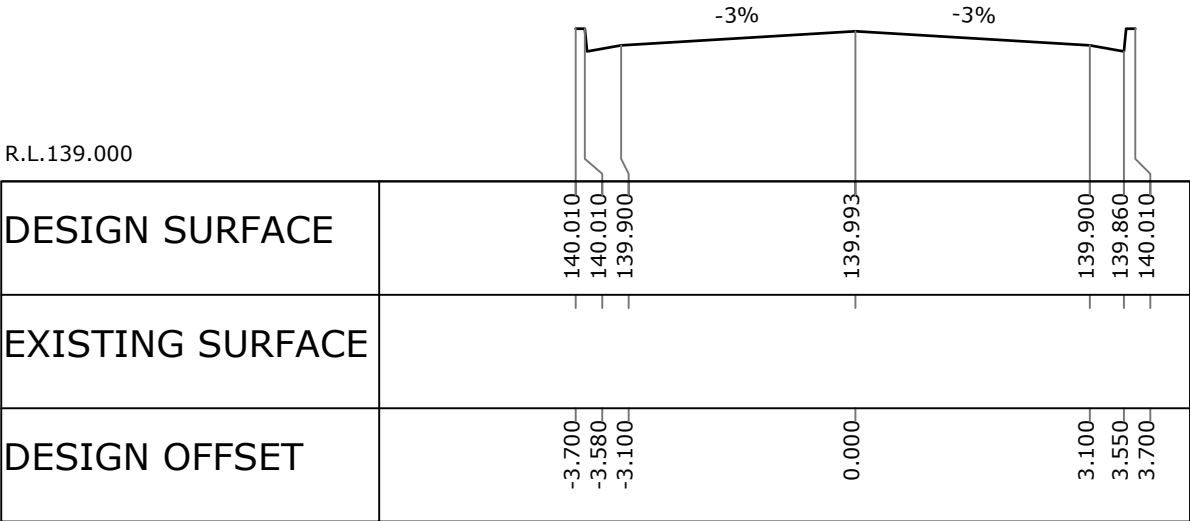
CH. 20.000



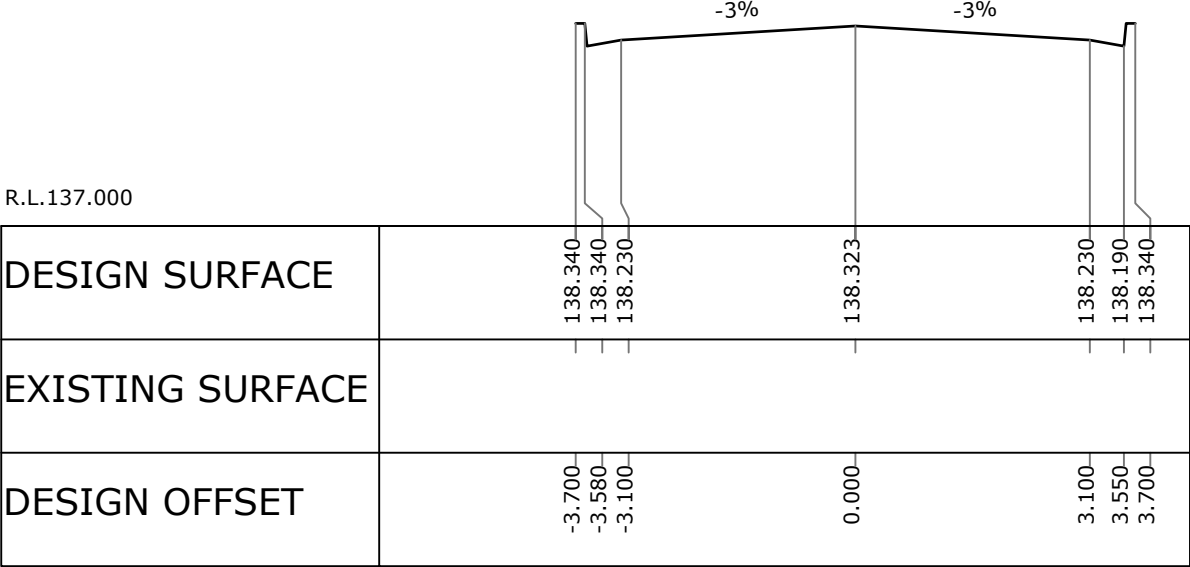
CH. 10.000



CH. 0.000



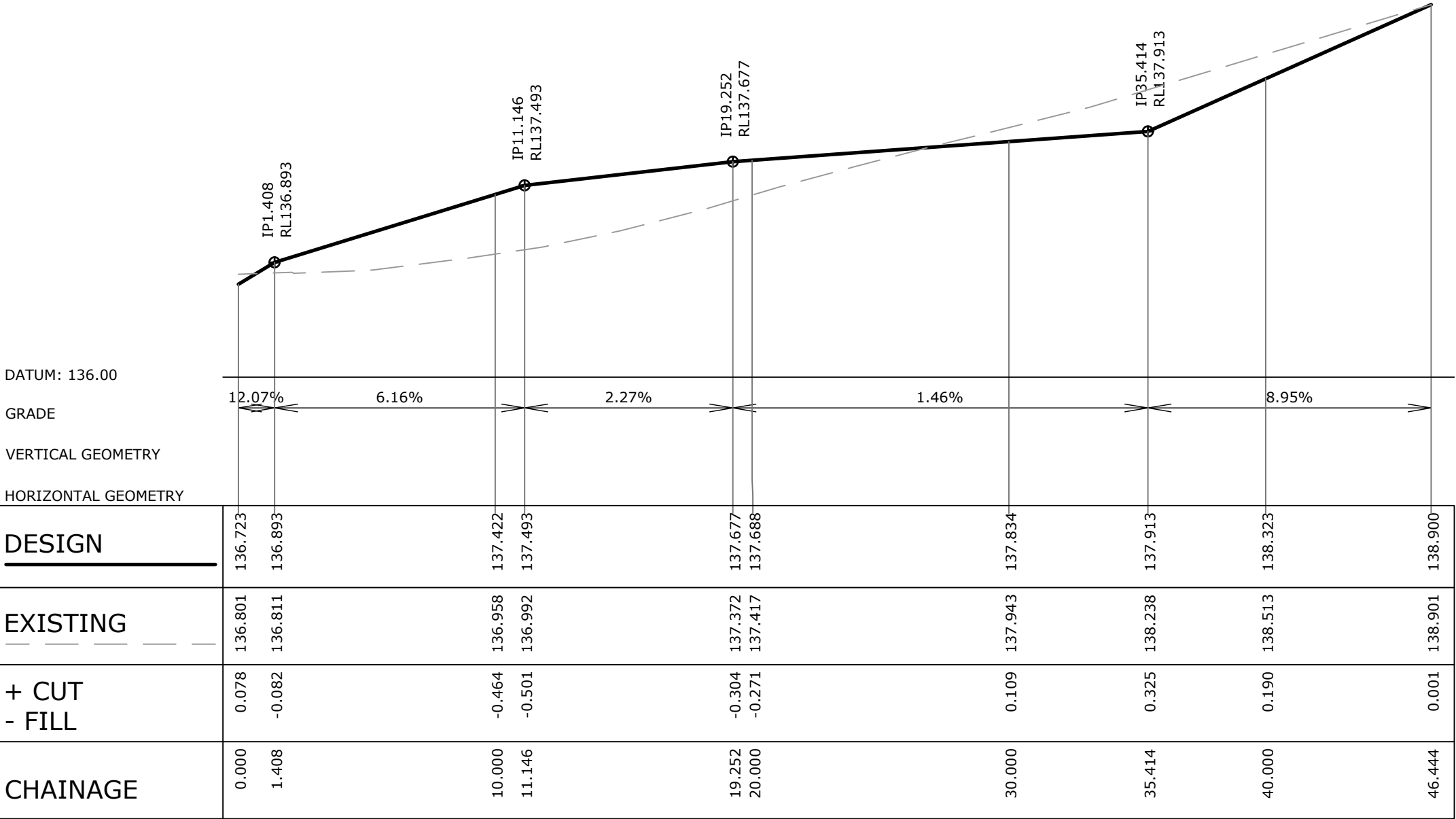
CH. 46.444



CH. 40.000

CROSS SECTIONS PROFILE - DARWINIA DRIVE

HORIZONTAL SCALE 1 : 100
VERTICAL SCALE 1 : 50



LONGITUDINAL SECTIONS PROFILE - DARWINIA DRIVE

HORIZONTAL SCALE 1 : 200
VERTICAL SCALE 1 : 40

THIS DRAWING IS TO BE VIEWED IN COLOUR AS SOME FEATURES / SYMBOLS ARE DIFFERENTIATED BY COLOUR. DRAWING NOT TO BE RELIED ON IF PRINTED IN GREYSCALE.

NOT FOR CONSTRUCTION

NORTHERN METROPOLITAN CEMETERIES TRUST

PROPOSED ACCESS ROAD DEVELOPEMENT
BUSHLAND CEMETERY, 1 HAKEA AVENUE
CROSS & LONGITUDINAL SECTIONS-DARWINIA DRIVE

FILENAME:	PROJECT NUMBER	DRAWING NUMBER	REVISION
20190763_202 ROAD CROSS SECTIONS.DWG	20190763	202	C



tonkin.com.au

PUBLIC UTILITIES:
THE SERVICES SHOWN ARE DERIVED FROM PLANS OBTAINED FROM THE RELEVANT SERVICE AUTHORITIES. IT IS THE RESPONSIBILITY OF THE CONTRACTOR TO ARRANGE WITH THE RELEVANT SERVICE AUTHORITIES FOR CONFIRMATION OF SERVICES AND THEIR LOCATION BEFORE EXCAVATION WORK COMMENCES.

SHEET SIZE				
A1				
100mm ON ORIGINAL DRAWING - DO NOT SCALE DRAWING				
C	DA ISSUE	30.03.20	KL	IR
B	REVISED PRELIMINARY ISSUE	11.11.19	CV	CV
A	PRELIMINARY ISSUE	10.09.19	CV	IR
REV	AMENDMENT / REASON FOR ISSUE	DATE	DES.	DWN.
C.CELESKI				



THIS DRAWING IS TO BE VIEWED IN COLOUR AS SOME FEATURES / SYMBOLS ARE DIFFERENTIATED BY COLOUR. DRAWING NOT TO BE RELIED ON IF PRINTED IN GREYSCALE.

NOT FOR CONSTRUCTION

NORTHERN METROPOLITAN CEMETERIES TRUST

PROPOSED ACCESS ROAD DEVELOPEMENT
BUSHLAND CEMETERY, 1 HAKEA AVENUE
TYPICAL DETAILS AND SECTIONS SHEET

FILENAME:	PROJECT NUMBER	DRAWING NUMBER	REVISION
20190763_300 TYPICAL DETAIL.DWG	20190763	300	B

					COORDS:
					DATUM:
					SCALE: AS SHOWN
					SURVEYED:
					SURVEY DATE:
B	DA ISSUE	30.03.20	KL	IR	APPROVED / PROJECT LEADER
A	PRELIMINARY ISSUE	10.09.19	CV	IR	
REV	AMENDMENT / REASON FOR ISSUE	DATE	DES.	DWN.	C.VELESKI

© TONKIN CONSULTING

PUBLIC UTILITIES:

THE SERVICES SHOWN ARE DERIVED FROM PLANS OBTAINED FROM THE RELEVANT SERVICE AUTHORITIES. IT IS THE RESPONSIBILITY OF THE CONTRACTOR TO ARRANGE WITH THE RELEVANT SERVICE AUTHORITIES FOR CONFIRMATION OF SERVICES AND THEIR LOCATION BEFORE EXCAVATION WORK COMMENCES.



tonkin.com.au

V:\2019\20190763 FRENCHES FOREST BUSHLAND CEMETERY - TAYLOR LAUDER BERSTEN\3 DEVELOPMENT\1 ACAD\01 DWG\20190763_300 TYPICAL DETAIL.DWG -DETAILS1- (27-03-20 2:58:19PM)