



ISSUE: DATE: DESCRIPTION:
XX 14.06.19
XY 18.06.19 ISSUED FOR CLIENT REVIEW
REVISED ISSUED FOR CLIENT REVIEW

WORK IN PROGRESS

NOTE:
- ALL RAMP LEVELS SHOWN TO BE CONFIRMED BY CIVIL AND HYDRAULIC ENGINEER.
- ALL DRAINAGE LEVELS SHOWN TO BE CONFIRMED BY HYDRAULIC ENGINEER.
- FOR WET AREA DETAILS REFER TO DRAWINGS 400 AND 401.
- FOR STAIR DETAILS REFER TO DRAWINGS 410, 411 AND 412.
- DRAWINGS TO BE READ IN CONJUNCTION WITH THE MATERIALS AND FINISHES SCHEDULE.
- FOR SLAB THICKNESSES AND COLUMN SIZES REFER TO HOLLOWCORE DRAWINGS.
- FOR ABBREVIATIONS REFER TO GENERAL NOTES DRAWING 010.

LEGEND:	
GENERAL	
[DXC]	DOOR TAG:
[WXX]	WINDOW NUMBER
[FFL 0.000]	FINISHED FLOOR LEVEL
[RL 0.000]	RELATIVE LEVEL
[RL 0.000]	RELATIVE LEVEL MUST NOT CHANGE FOR COMPLIANCE
[SFL 0.000]	STRUCTURAL FLOOR LEVEL
FINISHES	
[XXX]	FINISHES REFER TO THE MATERIAL AND FINISHES SCHEDULE

FIGGIS +
JEFFERSON
TEPA

FIGGIS + JEFFERSON TEPA PTY LTD
220 Willoughby Road, Crows Nest, NSW 2065 Australia

T 02 9438 5555 E studio@figgis.com.au
F 02 9439 5163 W www.figgis.com.au

ACN 002 875 • NSW Architects Registration
Board Nominated Architect Stephen Figgis 3565

This drawing is protected under the Copyright Act 1968 and is the copyright of Figgis and Jefferson Architects. Do not reproduce, modify or transfer this drawing without the permission of Figgis and Jefferson Architects. Do not scale this drawing. Use Speed dimensions only. Confirm all dimensions and levels on site prior to commencement of any work, preparation of shop drawings or fabrication of components.

PROJECT
8 NARABANG WAY
FOR
BEACH GROUP OF COMPANIES P/L
AT
8 NARABANG WAY BELROSE NSW

DRAWING TITLE
GROUND FLOOR PLAN - PART 1

ARCHITECT
JC

LAST PRINTED
18/06/2019

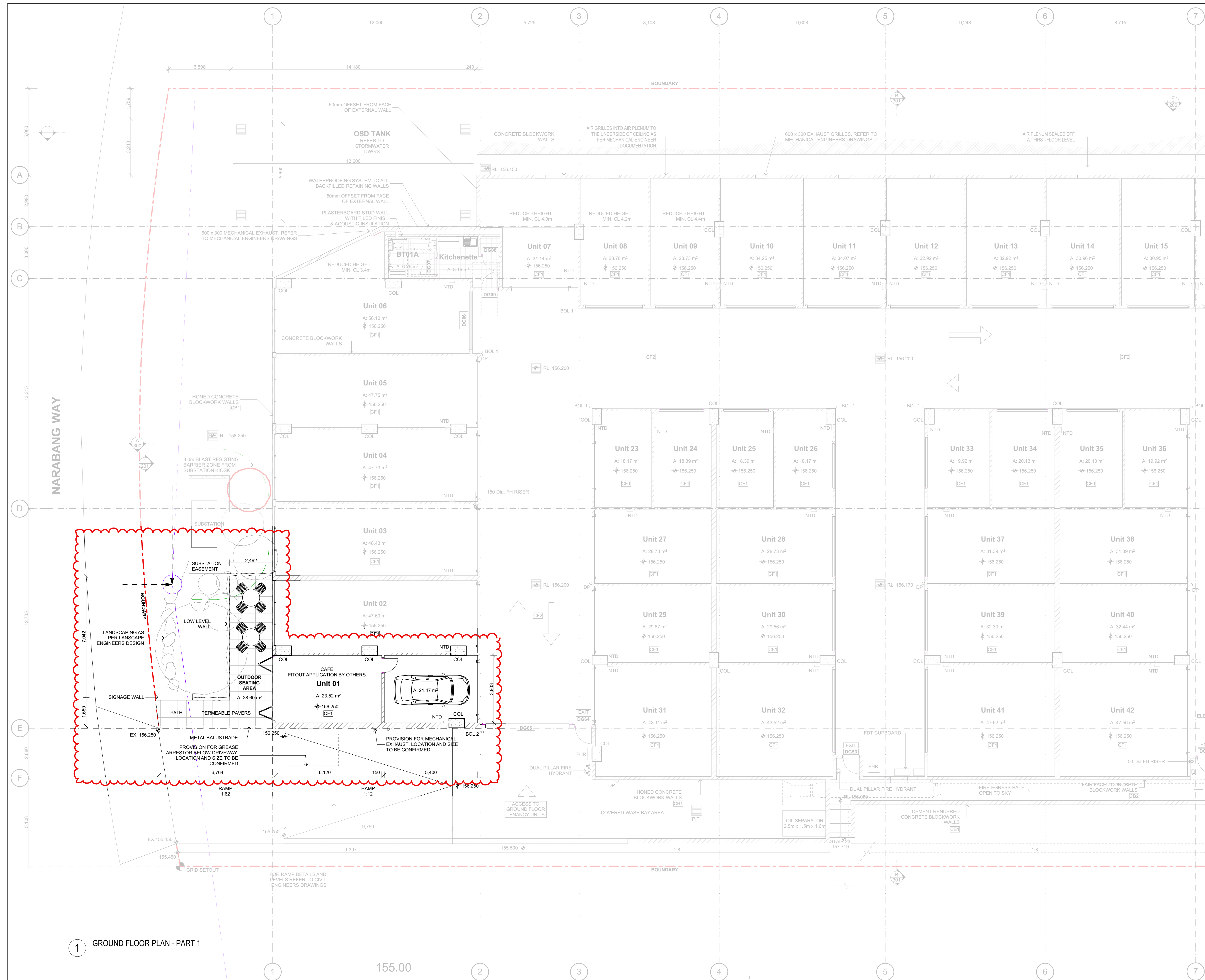
DRAWING NO.
3656 DD 110

DRAWN
GN

TRUE NORTH
N

ISSUE
XY

SCALE
SCALE 0m 1 2 3 4 5



1 GROUND FLOOR PLAN - PART 1

155.00