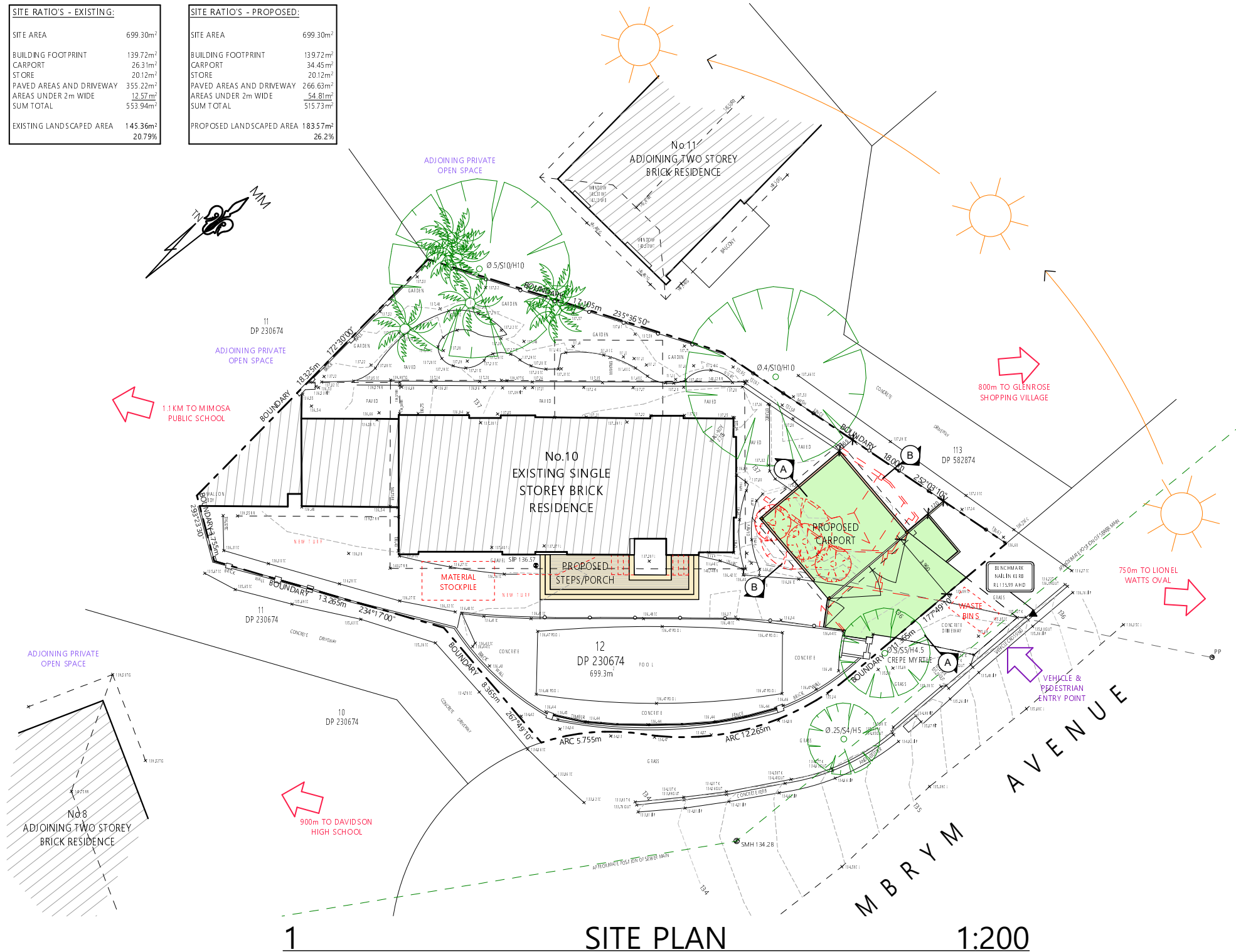


SITE RATIO'S - EXISTING:	
SITE AREA	699.30m ²
BUILDING FOOTPRINT	139.72m ²
CARPORT	26.31m ²
STORE	20.12m ²
PAVED AREAS AND DRIVEWAY	355.22m ²
AREAS UNDER 2m WIDE	12.57m ²
SUM TOTAL	553.94m ²
EXISTING LANDSCAPED AREA	145.36m ²
	20.79%

SITE RATIO'S - PROPOSED:	
SITE AREA	699.30m ²
BUILDING FOOTPRINT	139.72m ²
CARPORT	34.45m ²
STORE	20.12m ²
PAVED AREAS AND DRIVEWAY	266.63m ²
AREAS UNDER 2m WIDE	54.81m ²
SUM TOTAL	515.73m ²
PROPOSED LANDSCAPED AREA	183.57m ²
	26.2%



1 SITE PLAN 1:200
& SITE ANALYSIS / ENVIRONMENTAL SITE MANAGEMENT

