

**SOUTH WEST ELEVATION**  
**1:100**

**NOTES (E & OE)**

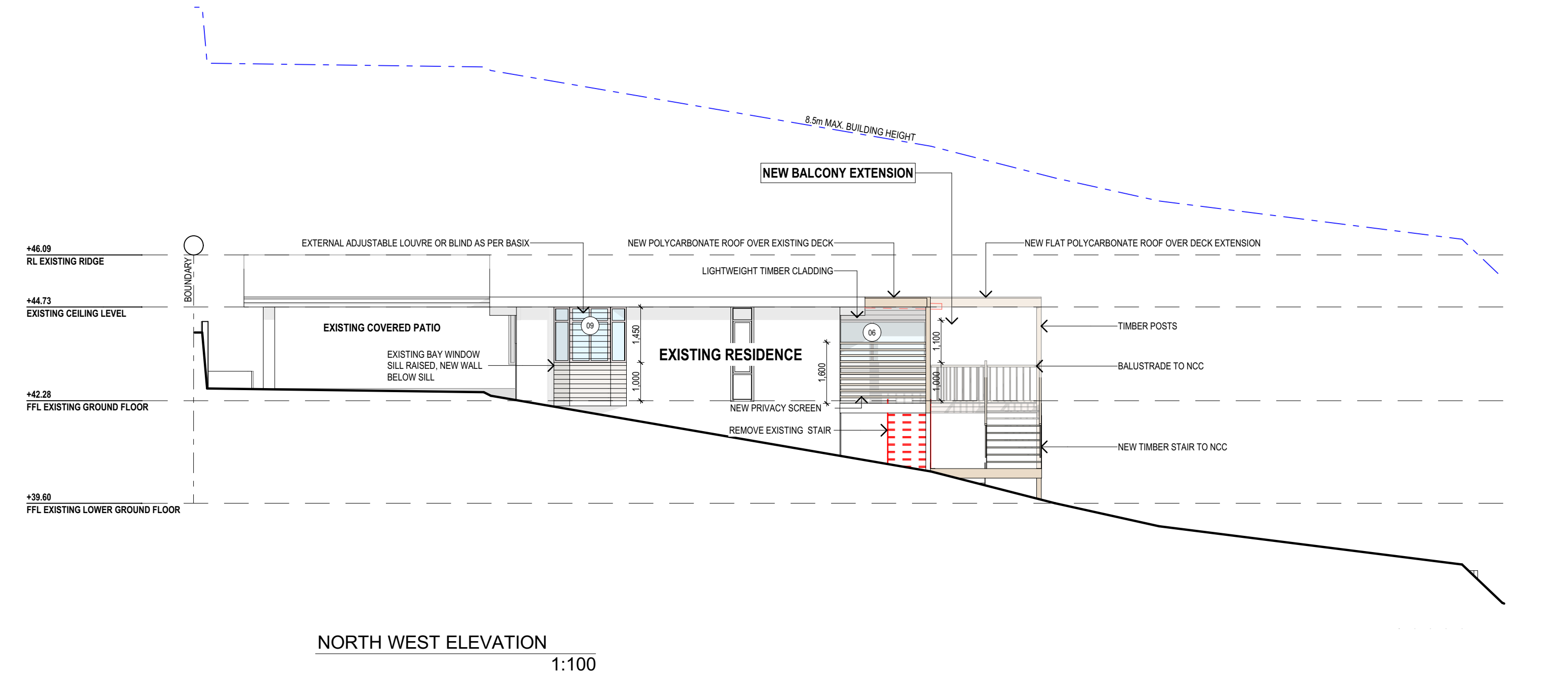
- All structures including stormwater & drainage to engineer's details.
- Do not obtain dimensions by scaling drawings.
- All dimensions are to be checked on site prior to starting work.
- These drawings are to be read in conjunction with all other consultant's drawings and specifications.
- All workmanship & materials shall be in accordance with the requirements of current editions including amendments of the National Construction Code, relevant Australian Standards & local council requirements.
- New materials are to be used throughout unless otherwise noted.
- Concrete footings, slab, structural beams or any other structural members are to be designed by a practicing engineer.

**JJ Drafting**  
174 Garden St, North Narrabeen, NSW, 2101  
PO Box 687, Dee Why, NSW, 2099  
Mob. 0414 717 541  
Email. jjdraft@tpg.com.au  
www.jjdrafting.com.au

REV:	DATE:	DESCRIPTION:
A	12/02/2021	AMENDMENTS AND NOTATION
B	06/04/2021	WINDOW POSITION CHANGED

PROJECT DETAILS: PROPOSED ALTERATIONS AND ADDITIONS 10 BERTANA CRESCENT WARRIEWOOD
DRAWING TITLE: SOUTH WEST ELEVATION

DATE: DEC/20	DRAWN BY: HF	SCALE: 1:100 @ A3
JOB No: 860/20	CHECKED BY: JJ	DRAWING No: DA.07



NORTH WEST ELEVATION  
1:100

	<div>NOTES (E &amp; OE)</div> <div><ul style="list-style-type: none"><li>• All structures including stormwater &amp; drainage to engineer's details.</li><li>• Do not obtain dimensions by scaling drawings.</li><li>• All dimensions are to be checked on site prior to starting work.</li><li>• These drawings are to be read in conjunction with all other consultant's drawings and specifications.</li><li>• All workmanship &amp; materials shall be in accordance with the requirements of current editions including amendments of the National Construction Code, relevant Australian Standards &amp; local council requirements.</li><li>• New materials are to be used throughout unless otherwise noted.</li><li>• Concrete footings, slab, structural beams or any other structural members are to be designed by a practicing engineer.</li></ul></div>	<div>JJ Drafting</div> <div>174 Garden St, North Narrabeen, NSW, 2101</div> <div>PO Box 687, Dee Why, NSW, 2099</div> <div>Mob. 0414 717 541</div> <div>Email. jjdraft@tpg.com.au</div> <div>www.jjdrafting.com.au</div>	<div>REV:</div> <div>DATE:</div> <div>DESCRIPTION:</div>	<div>PROJECT DETAILS:</div> <div>PROPOSED ALTERATIONS AND ADDITIONS</div> <div>10 BERTANA CRESCENT WARRIEWOOD</div>	<div>DATE:</div> <div>DEC/20</div>	<div>DRAWN BY:</div> <div>HF</div>	<div>SCALE:</div> <div>1:100 @ A3</div>	
			<div>A</div> <div>12/02/2021</div> <div>AMENDMENTS AND NOTATION</div>					
			<div>B</div> <div>06/04/2021</div> <div>WINDOW POSITION CHANGED</div>					
			<div>DRAWING TITLE:</div> <div>NORTH WEST ELEVATION</div>	<div>JOB No:</div> <div>860/20</div>	<div>CHECKED BY:</div> <div>JJ</div>	<div>DRAWING No:</div> <div>DA.08</div>		