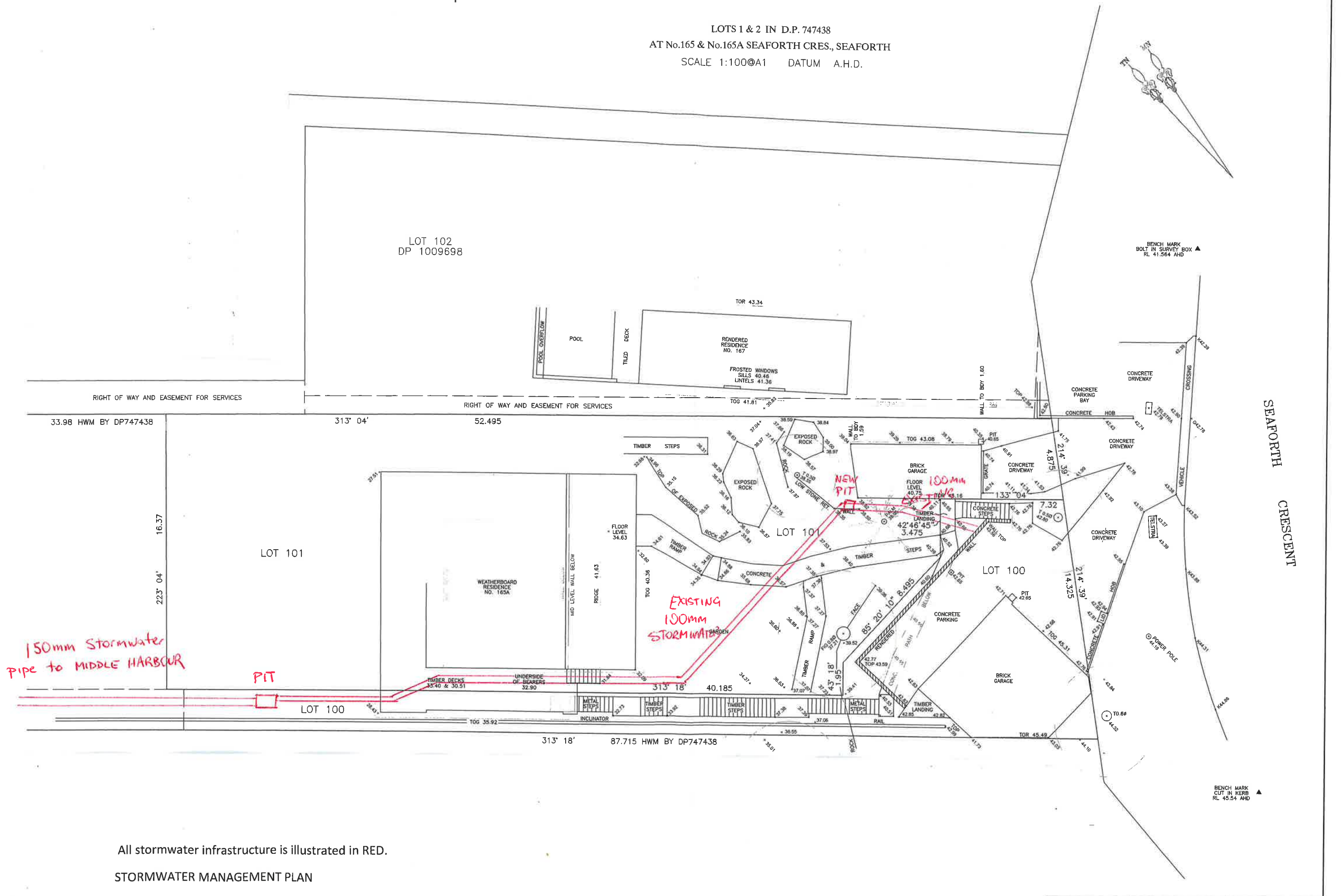


LOTS 1 & 2 IN D.P. 747438
 AT No.165 & No.165A SEAFORTH CRES., SEAFORTH
 SCALE 1:100@A1 DATUM A.H.D.



All stormwater infrastructure is illustrated in RED.

STORMWATER MANAGEMENT PLAN

165A Seaforth Crescent, Seaforth

Drawn by: Graeme Lee , B.Building UNSW