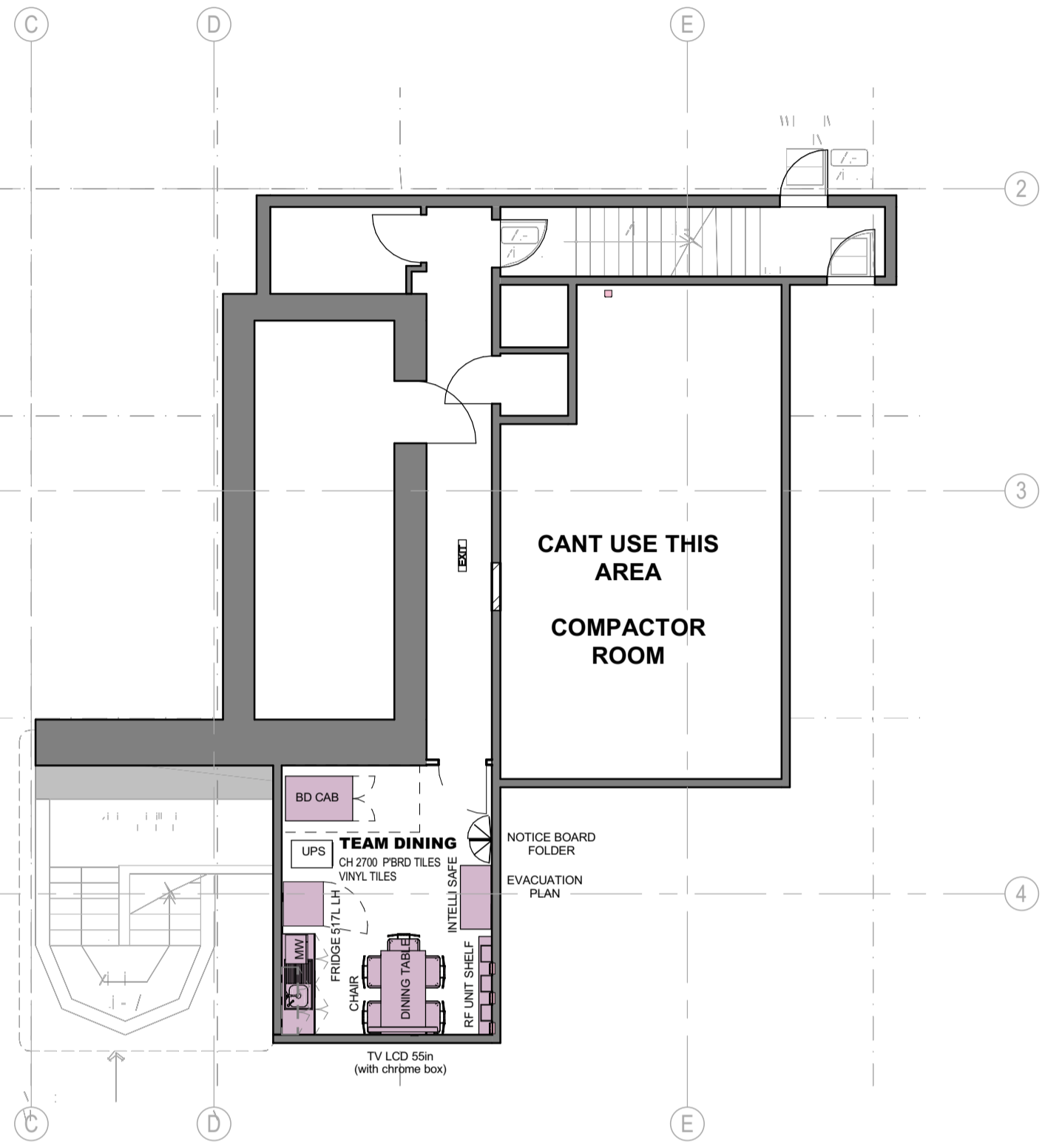
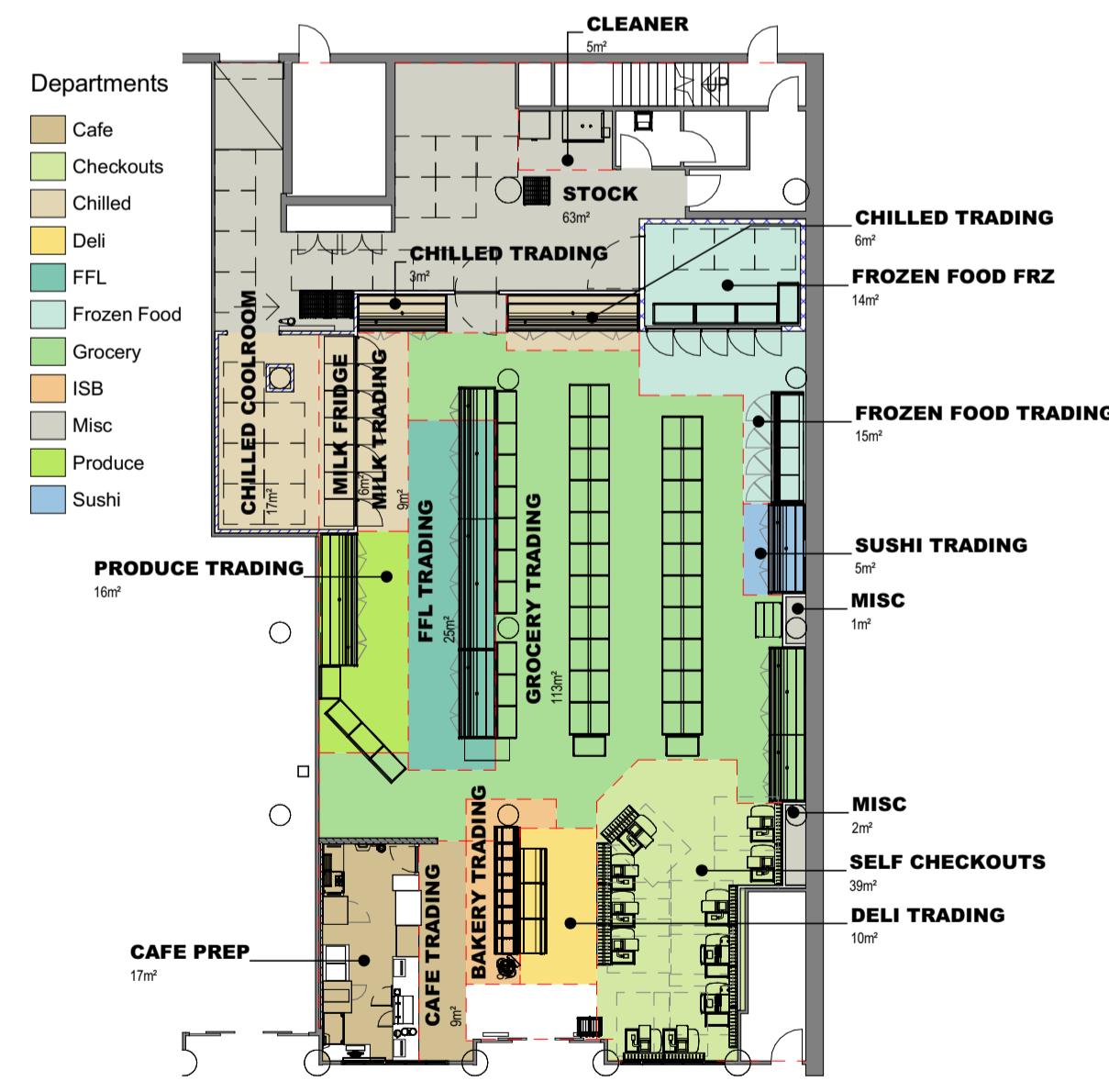


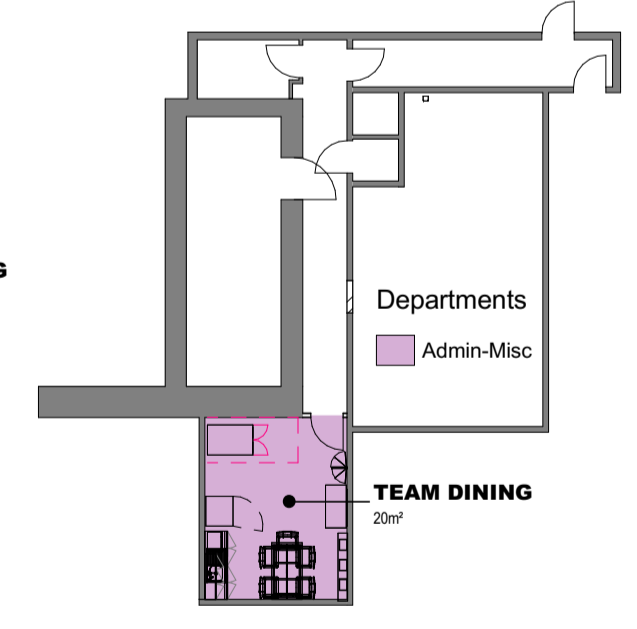
PLANT ROOM LOCATION TBC
NOTE: REMOVAL OF CEILING REQUIRED, UPGRADED TO HVAC REQUIRED. DETAILS TBC



② Concept Plan - Basement
1:100



③ Area Plan - Ground Floor
1:200



④ Area Plan - Basement Floor
1:200

REFRIGERATION BAY COUNT			
Description	Count	Bays	Doors
DAIRY			
6 TIER DAIRY - 2500	1	2	0
6 TIER DAIRY - 3750	1	3	0
		5	0
Deli - Self Serve			
AVEM 1000 HOT FOOD	3	3	0
		3	0
DRINKS			
6 TIER DRINKS - 1875	1	1	0
6 TIER DRINKS - 2500	2	4	0
		5	0
FFL			
6 TIER FFL - 3750	2	6	0
		6	0
FFN			
6 TIER FFN - 2500	1	2	0
		2	0
PRODUCE			
6 TIER PRODUCE - 3750	1	3	0
		3	0

TRADING BAY BREAKDOWN	
Description	Total Bays
Admin-Misc	8
FULL HEIGHT FIXTURE	8
Chilled	2
GRAVITY FEED UNIT	2
MILK SHELVES	5
Grocery	47
FULL HEIGHT FIXTURE	47
ISB	4
BAKERY COUNTER	4
Produce	3
FULL HEIGHT FIXTURE	3

AREA - TRADING		
Department	Area	Ratio
Grocery	112.80 m ²	43%
Produce	16.38 m ²	6%
Checkouts	38.61 m ²	15%
Cafe	8.74 m ²	3%
Sushi	4.76 m ²	2%
ISB	9.18 m ²	3%
Deli	9.96 m ²	4%
Frozen Food	14.88 m ²	6%
Chilled	8.64 m ²	3%
Chilled	6.05 m ²	2%
FFL	25.37 m ²	10%
Chilled	6.48 m ²	2%
Chilled	3.06 m ²	1%
Grand total	264.92 m²	

AREA - NON TRADE		
Department	Area	Ratio
Admin-Misc	20.17 m ²	14%
Cafe	17.25 m ²	12%
Chilled	17.18 m ²	12%
Frozen Food	14.38 m ²	10%
Misc	71.88 m ²	51%
Grand total	140.85 m²	

AREA - TRADING - FRESH/NON...		
Use	Area	Ratio
Fresh	98.62 m ²	37%
Front-of-Store	38.61 m ²	15%
Grocery	127.68 m ²	48%
Total Trading Area	264.92 m²	100%

AREA - RATIO		
Type	Area	Ratio
Trading	264.92 m ²	65%
Non-Trade	140.85 m ²	35%
Total	405.76 m²	

ABBREVIATIONS	
ABR	ALUMINIUM BUFFER RAIL
AFFL	ABOVE FINISH FLOOR LEVEL
AH	ACCESS HATCH
AL	ALUMINIUM STRIP
BC	BATTERY CHARGER
BH	BAG HOLDER
BSN	BASIN
BR	BROOM RACK
BRR	BRUSH RACK
BT	BUCKET TRAP
BWU	BOILING WATER UNIT
CBR	COOLROOM BUFFER RAIL
CCB	CLEANING CHEMICAL BASKET
CCR	CLEANING CHEMICAL RACK
CER	CERAMIC
COB	CORNER GUARD BOLLARD
CH	CEILING HEIGHT
CW	COLD WATER
CWM	CHAINWIRE MESH
CV	CASH VACUUM
DB	DISTRIBUTION BOARD
DPS	DEFLECTION PROTECTION SYSTEM
DR	DOUBLE RAIL
DWR	DRAWER UNDER BENCH
EAS	ELECTRONIC ALARM SWITCH
EMS	EMS CONTROL PANEL
FAC	FIRST AID CABINET
FB	FIRE BLANKET
FDC	FORCED DRAFT COOLER
FFL	FINISH FLOOR LEVEL
FH	FIRE HYDRANT
FHR	FIRE HOSE REEL
FW	FLOOR WASTE
GR	GUARD RAIL
HH	HOSE REEL HOLDER (EXISTING)
HR	HANDRAIL
HW	HOT WATER
HWS	HOT WATER SYSTEM
ICP	INSULATED COOLROOM PANEL
INS	INSECTOCUTTER
KH	KNIFE HOLDER
LD	LABEL DISPENSER
LP	LABEL PRINTER
MB	MILD STEEL BOLLARD
MSB	MAIN SWITCH BOARD
MW	MICROWAVE
MR	MOP RACK
PA	PUBLIC ADDRESS SYSTEM
PDL	PENDANT LIGHT
RC	ROLL CAGE
RD1	RECESSED DOWN LIGHT
SD	SOAP DISPENSER
SSC	STAINLESS STEEL CHANNEL
SSA	STAINLESS STEEL ANGLE
SCP-B	SCOPE BY BUILDER
SCP-IT	SCOPE BY IT
SCP-WW_C	SCOPE BY WW CONTRACTORS
TCD	TORK CLOTH DISPENSER
TTD	TORK TOWEL DISPENSER
TD	TUNDISH
TOW	TOP OF WALL
UR	UNIFORM RACK
UTR	UTENSIL RACK
WB	WHITEBOARD
WP-B	WALL PROTECTION - BUFFER RAIL
WP-BV	WALL PROTECTION - BUFFER RAIL W/ VINYL PANEL
WP-CB	WALL PROTECTION - CHAIR BUFFER RAILS
WP-TB	WALL PROTECTION - TIMBER BUFFER RAILS
WP-TT	WALL PROTECTION - TROLLEY TIMBER BUFFER RAIL WITH RHS
WS	WORK STATION
XHDG-BT	EXTRA HEAVY DUTY GRATE DRAIN WITH BUCKET TRAP

DRAFTED BY:
KY-TRG

NOTES:

Plot: 31/05/2019 3:35:44 PM
 Template Version: 2018.0.1_20180729
 Grand Floorplan Version: WWS-BWA_20180901.tbl
 File: F:\WOW\Metro\NSW_Mansly_ZP-31TheCorso-18443\Drawings\Manly

No.	DRAWING AMENDMENTS (REVISIONS)	DATE	BY
B	REMOVED BOH PREP FOR STOCK SPACE AND PROVIDED ADDITIONAL PALLET, A BALE PRESS CLEANERS BR, SINK, SPILL KIT AND SAFETY STEP, PROVIDED RAMP AT 1:14 TO FROZEN FOOD FREEZER, REMOVED PC KB, RELOCATED VINEA CASE AND REPLACED SPACE WITH 2X PROMO BINS, REMOVED THE 4 TIER DRINKS FRIDGE, PROVIDED A 2 BAY IN LIEU OF A 3 BAY BAKERY TRAY KIT, MOVED SUSHI DEPARTMENT UP, REMOVED 1X PRODUCE 3500 CASE, PROVIDED BIFOLD WINDOWS TO FRONT FACADE OF STORE FOR DIRECT CAFE ACCESS POINT, ADDED ADDITIONAL POS' UNITS TO CAFE SPACE, PROVIDED BAKERY COUNTER UNIT, CAKE FRIDGE, FRIDGE, BIN, WORK STATION TO CAFE SPACE AND PUQ PRESS AS WELL AS TCD, POT RACK, COMBI STEAMER AND PANINI GRILL, ADDED 3X QUEUE UNITS, RELOCATED 3X SCOS, REMOVED 1X OSAKA CASE, PROVIDED FHR, ADJUSTED LAYOUT OF BLAST CHILLER TO CAFE SPACE, SUPPLIED 4X "SMALL" PROMO BINS, CONVERTED MACRO ISLAND FROM 3 TO 2 BAYS, PROVIDED 1500MM RAPID ROLLER SHUTTER, ADDED ADDITIONAL 2X GROCERY FIXTURES TO AISLE ENDS PROVIDED TO BOH	27/02/2019	SP-TRG
C	PROVIDED A 2500MM OSAKA FRIDGE ILO A 3750MM, PROVIDED ADDITION SELF-REGISTER AND SHUFFLED 2X SELF-REGISTERS BESIDE THE OSAKA FRIDGE UP TO ALLOT FOR 1000MM CLEARANCE, PROVIDED TV SCREEN, WORK TROLLEY BASKET HOLDER, RECYCLE BIN AND REWARDS HUB PROVIDED, ADDITION 7X ROLL CAGES PROVIDED TO BOH	05/03/2019	SP-TRG
D	REVISED LAYOUT TO COOLROOM AND FREEZER, TRADING FLOOR LAYOUT REVISED, SCO AREA REVISED AND CAFE AREA REVISED.	XX/03/2019	MP-TRG
E		24/04/2019	ELC-TRG



PROJECT ADDRESS:
MANLY - THE CORSO

KIT ISSUE:

DRAWN BY: KY-TRG
 PLANNING MGR: M.MORGAN
 PROJECT MGR: WW

PROJECT: METRO
MANLY - THE CORSO

SCALE: As indicated @ A1
 ISSUE DATE: 24/04/2019

REGION / STATE: NSW
 PROJECT NO: XX.XXXX

DOC STAGE: 100 | WA100 | PRE APPROVAL

DRAWING: Concept Plan

DRAWING NO: WA100
 AMEND. NO: E

BRISBANE OFFICE
 TRG Queensland Pty Ltd ABN 91 119 365 883 © - COPYRIGHT 2012
 15 Kurilpa Street West End Queensland 4101 Australia
 P +61 7 3392 2200 F +61 7 3392 2300 E trg-ql@trg-aus.com W www.trg-aus.com

MELBOURNE OFFICE
 The Retail Group Pty Ltd ABN 85 050 134 686 © - COPYRIGHT 2012
 Lvl 3, Suite 37, 799 Springvale Rd Melbourne 3170 Australia
 P +61 3 9542 9300 F +61 3 9542 9310 E trg@trg-aus.com W www.trg-aus.com