

LANDSCAPE PLAN SCHEDULE	
L01	LANDSCAPE SITE PLAN SCALE 1:150 (includes Landscape Details Legend)
L02	TREE RETENTION PLAN SCALE 1:100
L03	PUBLIC DOMAIN PLANTING PLAN SCALE 1:100
L04	SITE PERIMETER PLANTING PLAN SCALE 1:100
L05	TERRACE PLANTERS PLANTING PLAN SCALE 1:100
L06	PLANTING SCHEDULES + SPECIFICATIONS
L07	TYPICAL LANDSCAPE DETAILS Scale as Shown

LEGEND

- 

OFF SITE / PUBLIC DOMAIN  
LANDSCAPE AREAS  
See Sheet L03 for Planting Details
- 

ON SITE LANDSCAPE AREAS  
See Sheet L04 + L05 for Planting Details
- 

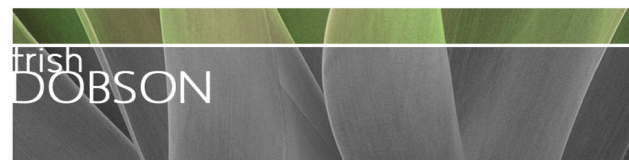
LAWN - ROAD RESERVE + SUB-STATION  
See Sheet L07 for Details
- 

TYPICAL DETAILS  
eg Detail 09 - Sheet L07

AMENDMENTS	
REV A	23.10.24 Additional parking spaces added Surf Rd

SITE + PUBLIC DOMAIN PLAN

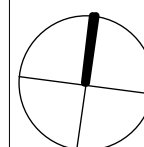
SCALE 1:150 @ A2



trish dobson landscape architecture  
34A MARINE PARADE, AVALON NSW 2107  
0408 983020  
trish@trishdobson.com.au  
TRISH DOBSON  
REGISTERED LANDSCAPE ARCHITECT HORTICULTURIST ARBORIST  
ABN 57 241 486 158

CONSTRUCTION CERTIFICATE  
NEIGHBOURHOOD SHOP TOP HOUSING  
for Leslie Cassar

231 Whale Beach Rd Whale Beach NSW



0m 2m 4m 6m 8m

LANDSCAPE SITE PLAN

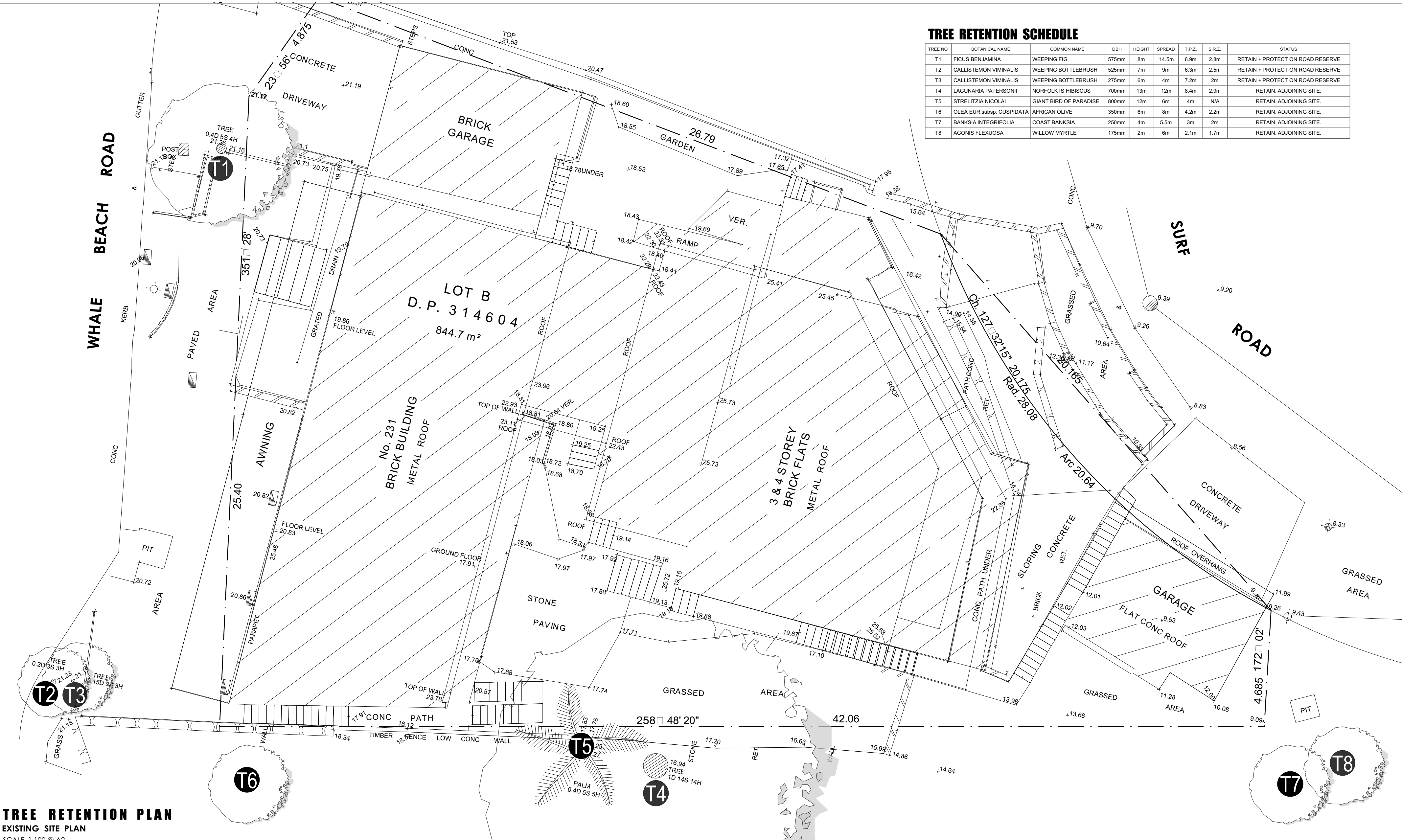
1:150 @ A2 SCALE  
(Rev A 23.10.24) 8.7.24 DATE  
1911 JOB  
Rev A CC ISSUE  
1 OF 7 SHEET

1911 / CC-L01A DWG



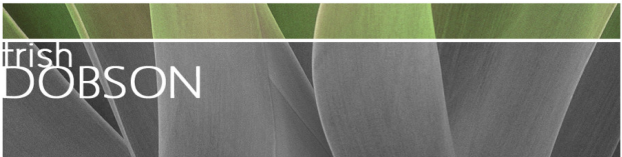
TREE RETENTION SCHEDULE

TREE NO	BOTANICAL NAME	COMMON NAME	DBH	HEIGHT	SPREAD	T.P.Z.	S.R.Z.	STATUS
T1	FICUS BENJAMINA	WEeping FIG	575mm	8m	14.5m	6.9m	2.8m	RETAIN + PROTECT ON ROAD RESERVE
T2	CALLISTEMON VIMINALIS	WEeping BOTTLEBRUSH	525mm	7m	9m	6.3m	2.5m	RETAIN + PROTECT ON ROAD RESERVE
T3	CALLISTEMON VIMINALIS	WEeping BOTTLEBRUSH	275mm	6m	4m	7.2m	2m	RETAIN + PROTECT ON ROAD RESERVE
T4	LAGUNARIA PATERSONII	NORFOLK IS HIBISCUS	700mm	13m	12m	8.4m	2.9m	RETAIN. ADJOINING SITE.
T5	STRELITZIA NICOLAI	GIANT BIRD OF PARADISE	800mm	12m	6m	4m	N/A	RETAIN. ADJOINING SITE.
T6	OLEA EUR.subsp. CUSPIDATA	AFRICAN OLIVE	350mm	6m	8m	4.2m	2.2m	RETAIN. ADJOINING SITE.
T7	BANKSIA INTEGRIFOLIA	COAST BANKSIA	250mm	4m	5.5m	3m	2m	RETAIN. ADJOINING SITE.
T8	AGONIS FLEXUOSA	WILLOW MYRTLE	175mm	2m	6m	2.1m	1.7m	RETAIN. ADJOINING SITE.



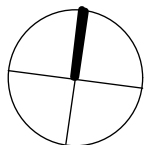
TREE RETENTION PLAN  
EXISTING SITE PLAN  
SCALE 1:100 @ A2

NOTE  
REFER TO L02C FOR PLANTING DETAILS  
PLAN TO BE READ IN CONJUNCTION WITH:  
ARCHITECTURAL PLANS BY RICHARD COLE ARCHITECTURE  
ARBORICULTURAL IMPACT ASSESSMENT BY URBAN FORESTRY AUSTRALIA (JULY 2021)



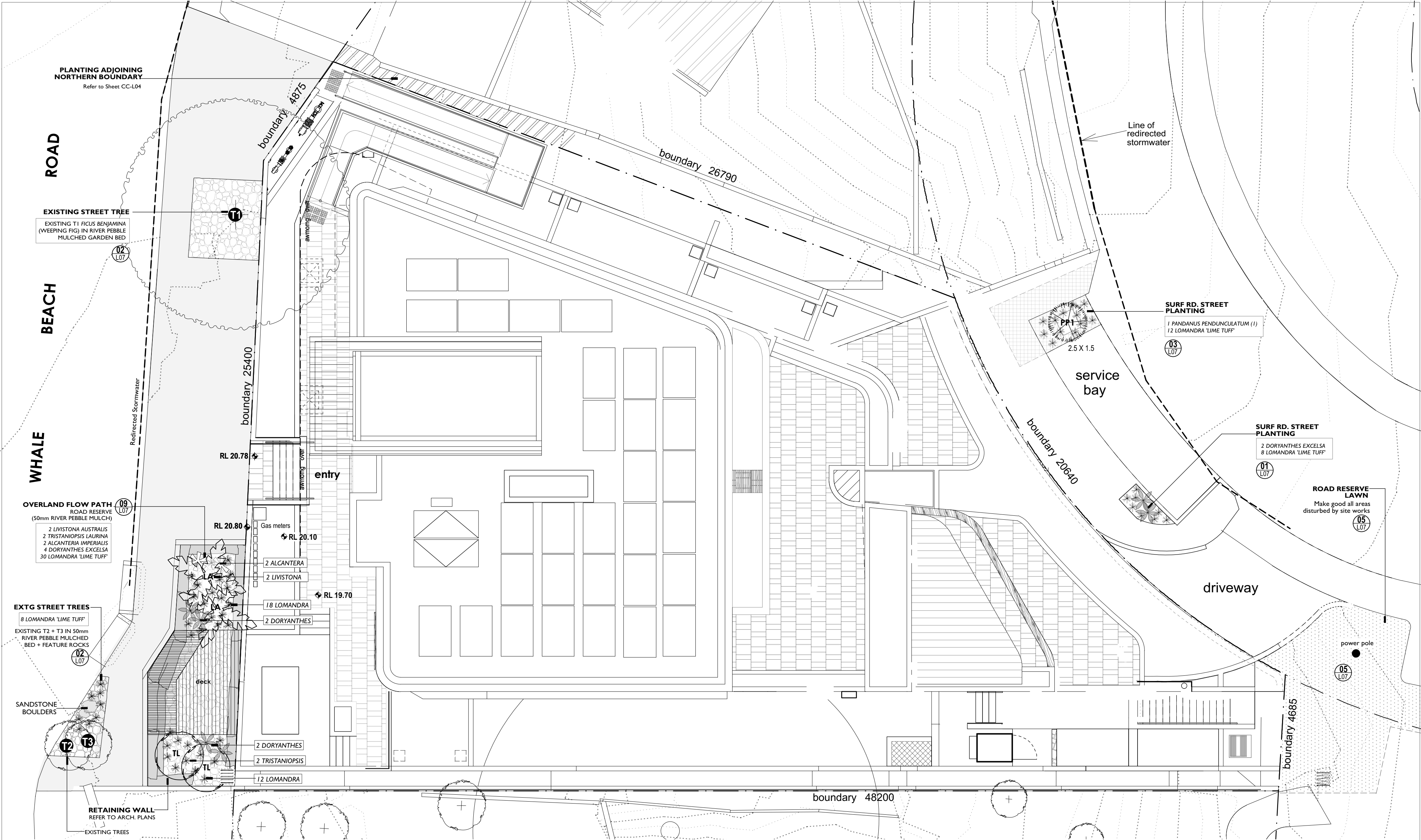
trish dobson landscape architecture  
34A MARINE PARADE, AVALON NSW 2107  
0408 983020  
trish@trishdobson.com.au  
TRISH DOBSON  
REGISTERED LANDSCAPE ARCHITECT HORTICULTURIST ARBORIST  
ABN 57 241 486 158

CONSTRUCTION CERTIFICATE  
NEIGHBOURHOOD SHOP TOP HOUSING  
for Leslie Cassar  
231 Whale Beach Rd Whale Beach NSW

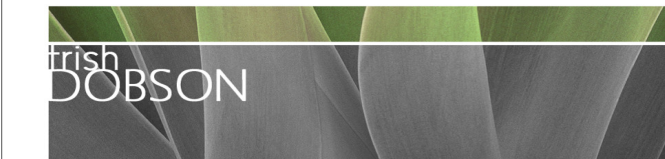


TREE RETENTION PLAN  
(No Amendments Rev A 23.10.24) 8.7.24  
1911 JOB  
CC ISSUE  
2 OF 7 SHEET  
1100 @ A2 SCALE  
DATE  
DWG  
1911 / CC-L02A



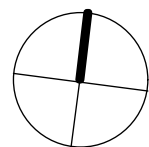


**PUBLIC DOMAIN LANDSCAPE PLAN**  
PLANTING AT GRADE  
SCALE 1:100 @ A2  
REFER TO L06 + L07 FOR PLANTING DETAILS



trish dobson landscape architecture  
34A MARINE PARADE, AVALON NSW 2107  
0408 983020  
trish@trishdobson.com.au  
TRISH DOBSON  
HORTICULTURIST ARBORIST  
ABN 57 241 486 158

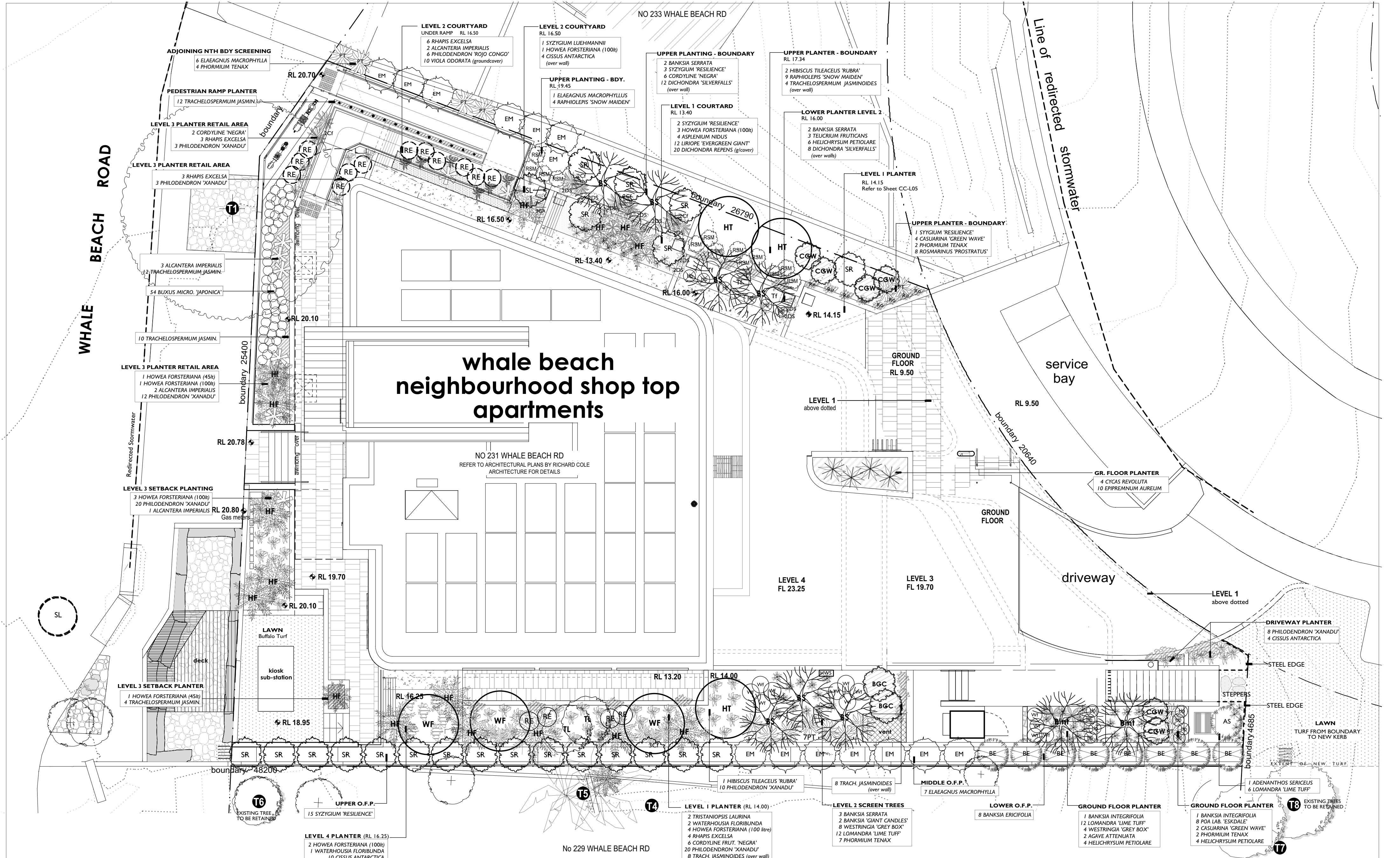
**CONSTRUCTION CERTIFICATE**  
NEIGHBOURHOOD SHOP TOP HOUSING  
for Leslie Cassar  
231 Whale Beach Rd Whale Beach NSW



**PUBLIC DOMAIN LANDSCAPE PLAN**  
1:100 @ A2 SCALE  
(Rev A 23.10.24) 8.7.24 DATE  
1911 JOB  
CC ISSUE  
3 OF 7 SHEET  
**1911 / CC-L03A** DWG

AMENDMENTS		
REV A	23.10.24	Planting deleted - parking spaces Surf Rd





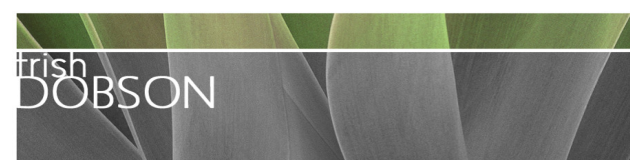
**PERIMETER PLANTING PLAN**

PERIMETER PLANTING AT GRADE + ON SLAB

SCALE 1:100 @ A2  
REFER TO SHEET L06 + L07 FOR SOIL PREPARATION SPECIFICATIONS

**AMENDMENTS**

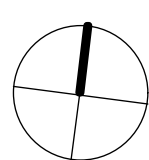
REV A 23.10.24 Planting deleted - parking spaces Surf Rd



trish dobson landscape architecture  
34A MARINE PARADE, AVALON NSW 2107  
0408 983020  
trish@trishdobson.com.au  
TRISH DOBSON  
REGISTERED LANDSCAPE ARCHITECT HORTICULTURIST ARBORIST  
ABN 57 241 486 158

**CONSTRUCTION CERTIFICATE**  
NEIGHBOURHOOD SHOP TOP HOUSING  
for Leslie Cassar

231 Whale Beach Rd Whale Beach NSW



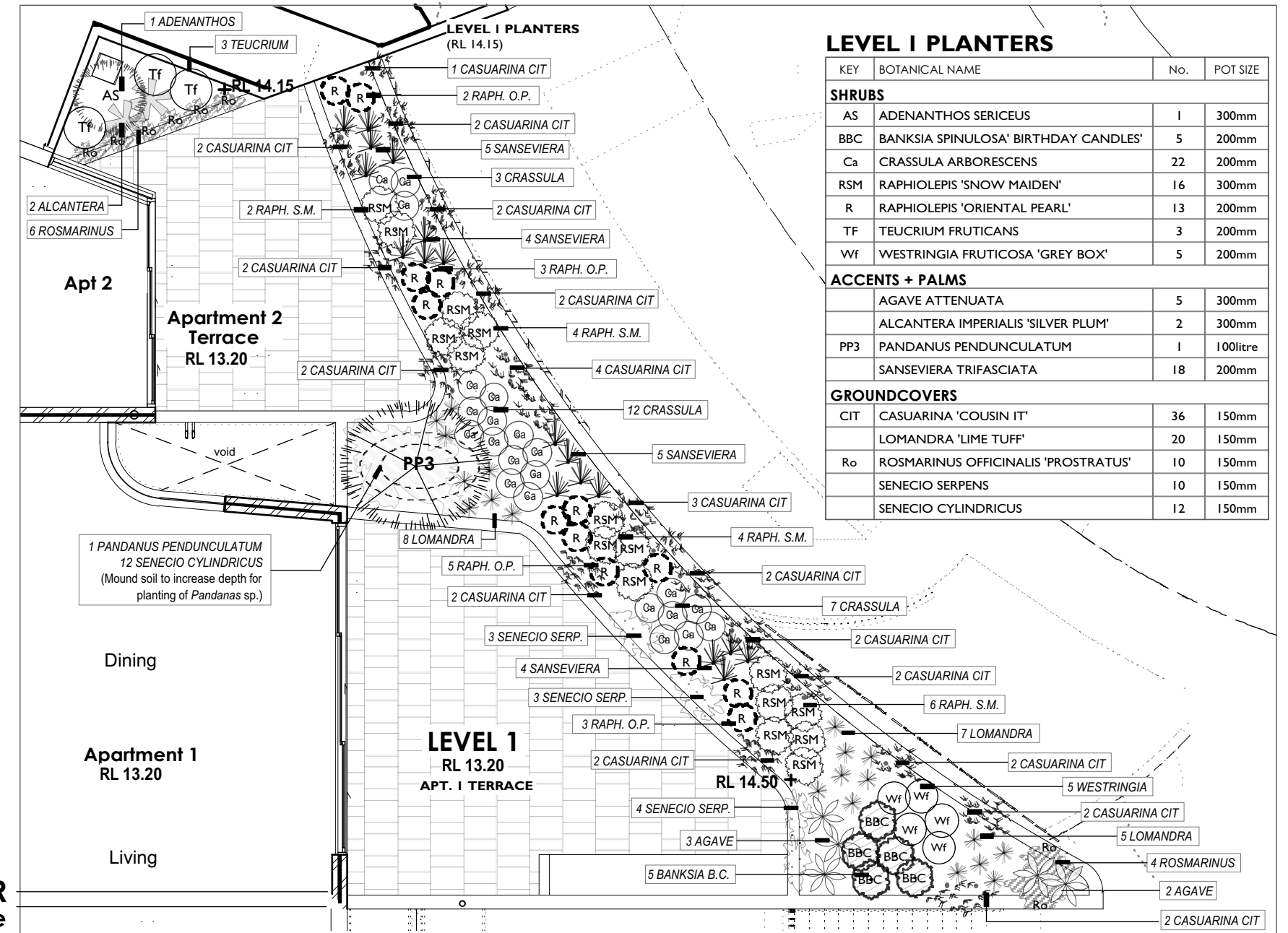
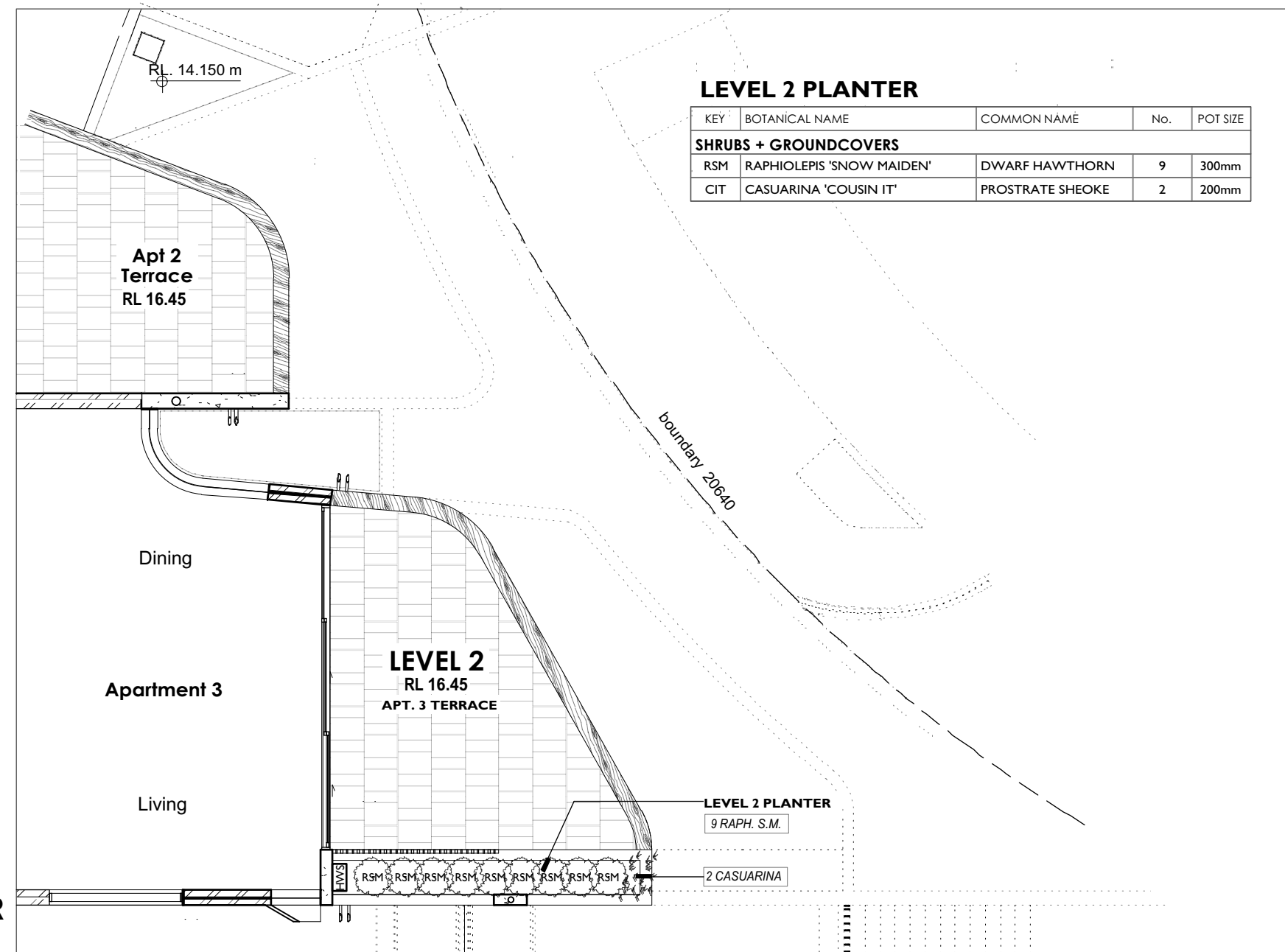
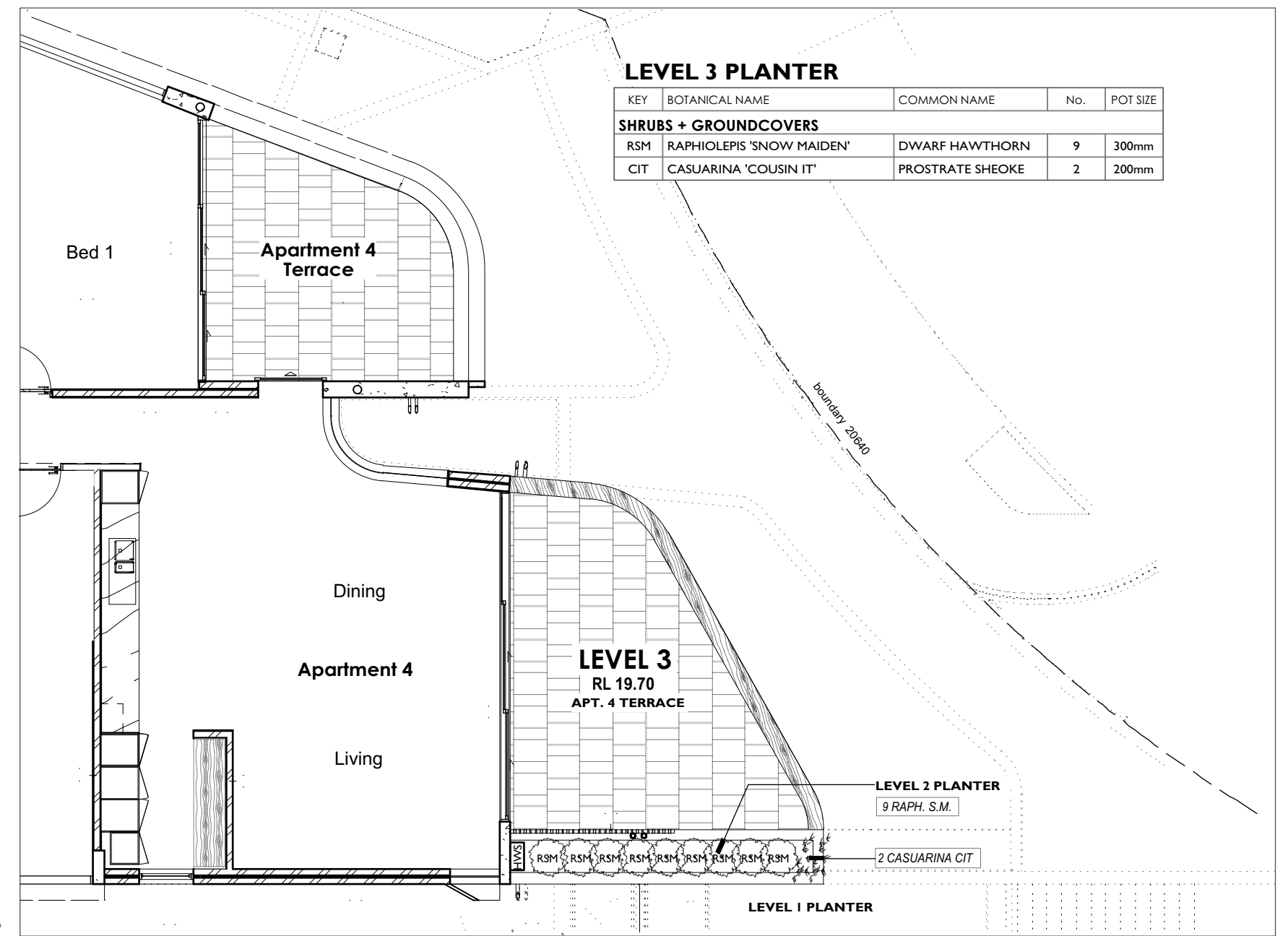
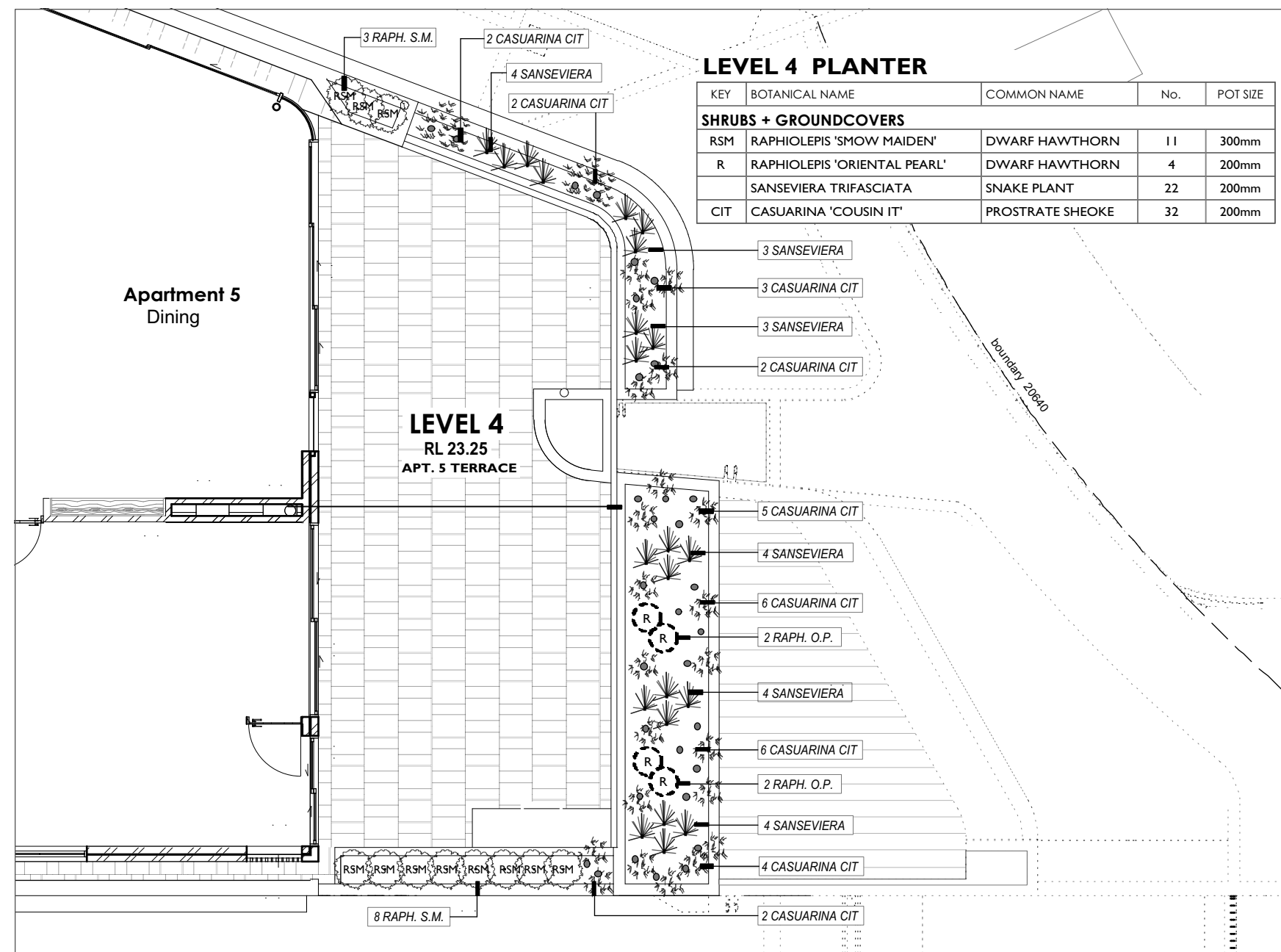
0m 1m 2m 3m 4m 5m

**PERIMETER PLANTING PLAN**

1:100 @ A2 SCALE  
(Rev A 23.10.24) 8.7.24 DATE  
1911 JOB  
CC ISSUE  
4 OF 7 SHEET

**1911 / CC-L04A** DWG







## PUBLIC DOMAIN PLANTING SCHEDULE

REFER TO CC-L03

KEY	BOTANICAL NAME	COMMON NAME	No.	POT SIZE	COMMENTS
<b>CANOPY TREES</b>					
LA	LIVISTONA AUSTRALIS	CABBAGE TREE PALM	2	350 litre	WHALE BCH RD SETBACK
PP1	PANDANUS PENDUNCULATUM	SCREW PINE	1	200 litre	SURF RD SETBACK
TL	TRISTANIOPSIS LAURINA	WATER GUM	2	200 litre	WHALE BCH RD SETBACK
<b>ACCENTS + GROUNDCOVERS</b>					
	ALCANTERA IMPERIALIS 'SILVER PLUM'	SILVER PLUM BROMELIAD	2	300mm	WHALE BCH RD SETBACK
	DORYANTHES EXCELSA	GYMEA LILY	6	300mm	BOTH ROAD SETBACKS
	LOMANDRA 'LIME TUFF'	DWARF MAT RUSH	58	200mm	BOTH ROAD SETBACKS

## LONG TERM MAINTENANCE STRATEGY

A QUALIFIED LANDSCAPE CONTRACTOR SHALL MAINTAIN THE LANDSCAPE WORKS, INCLUDING REPLACEMENT OF DEAD OR DAMAGED PLANT MATERIAL, WEED + PEST CONTROL, MOWING AND WATERING UNTIL PRACTICAL COMPLETION OF THE WORKS.

LONG TERM MAINTENANCE SHOULD BE UNDERTAKEN AND SHALL CONSIST OF THE FOLLOWING:

### SOIL TESTING

REGULAR SOIL TESTING SHALL BE UNDERTAKEN TO ENSURE pH VALUE REMAINS WITHIN THE RANGE OF 5.5-7.5, THAT THERE IS NO TOXICITY, SALINITY OR OVERUSE OF FERTILIZERS.

### WEEDING

ALL WEED SPECIES SHALL BE REMOVED FROM SITE USING NON CHEMICAL METHODS WHEREVER POSSIBLE. NO CHEMICAL HERBICIDES SHALL BE USED WITHIN THE CHILDCARE CENTRE. THE CENTRE MANAGER SHALL BE KEPT FULLY INFORMED OF ANY CHEMICALS PROPOSED TO BE USED IN THE VICINITY OF THE CENTRE. IF CHEMICALS ARE APPROVED FOR USE, ENSURE THEY ARE USED STRICTLY TO THE MANUFACTURER'S RECOMMENDED APPLICATION RATES. ENSURE NO OVERSPRAY OR HERBICIDE IS PERMITTED ONTO PLANT MATERIAL. ALL WEED MATERIAL SHALL BE REMOVED FROM SITE AND DISPOSED RESPONSIBLY.

### WATERING

WATERING SYSTEM SHALL BE MONITORED AND ADJUSTED TO ENSURE THAT ALL PLANTS ARE WATERED ADEQUATELY TO MAINTAIN HEALTHY, VIGOROUS GROWTH. CHECK FOR OVERWATERING AND ADJUST. REPAIRS SHALL BE MADE TO THE SYSTEM AS REQUIRED.

### PEST CONTROL

PESTS SHALL BE CONTROLLED BY PHYSICAL REMOVAL WHEREVER POSSIBLE OR BY THE USE OF NON-TOXIC SPRAYS APPLIED STRICTLY AS DIRECTED BY THE MANUFACTURER. ADVISE CHILDCARE CENTRE AND ALL RESIDENTS OF ANY APPLICATIONS.

### WEED ERADICATION

ALL WEED SPECIES SHALL BE REMOVED FROM SITE IN ACCORDANCE WITH NOXIOUS WEEDS ACT 1993 USING STANDARD INDUSTRY PRACTICES. NO WEED SPECIES SHALL BE PLANTED ON SITE.

### PLANT STAKING, FERTILIZING

ENSURE PLANT MATERIAL IS REPLISHED WITH SLOW RELEASE FERTILIZER EQUIVALENT TO 'OSMOCOTE 8-9 MT SLOW RELEASE FOR NATIVE'. MAINTAIN AND REPLACE STAKES AS NECESSARY.

### PRUNING

PRUNE PLANTS IF REQUIRED FOR REMEDIAL PURPOSES, TO REPAIR DAMAGE, TO IMPROVE SHAPE OR CLEAR FOOTPATHS OR DRIVEWAY OF OBSTRUCTIONS.

### REPLACEMENT OF FAILED PLANTS

REPLACE ANY PLANTS WHICH FAIL, BECOME DAMAGED OR ARE STOLEN. REPLACE WITH SIMILAR SIZE AND SAME SPECIES.

## PLANTING SCHEDULE - SITE PERIMETER

REFER TO CC-L04

KEY	BOTANICAL NAME	COMMON NAME	No.	POT SIZE	COMMENTS
<b>CANOPY TREES</b>					
Bint	BANKSIA INTEGRIFOLIA	COAST BANKSIA	2	75 litre	
BS	BANKSIA SERRATA	OLD MAN BANKSIA	7	75 litre	
HT	HIBISCUS TILEACEUS 'RUBRA'	RED COTTONWOOD	3	75 litre	PRUNE FOR DENSE GROWTH
HF	HOWEA FORSTERIANA ( large )	KENTIA PALM	14	100 litre	
Hf	HOWEA FORSTERIANA ( small )	KENTIA PALM	2	45 litre	
SL	SYZYGIVM LUEHMANNII	SMALL LEAF LILLYPILLY	1	300mm	
TL	TRISTANIOPSIS LAURINA	WATER GUM	2	100 litre	
WF	WATERHOUSIA FLORIBUNDA	WEeping LILLYPILLY	3	100 litre	
<b>SHRUBS</b>					
AS	ADENANTHOS SERICEUS	COASTAL WOOLYBUSH	1	300mm	PRUNE TO MAINTAIN
BGC	BANKSIA ERIC. x SPIN. 'GIANT CANDLES'	DWARF HEATH BANKSIA	2	200mm	
	BUXUS MICROPHYLLA 'JAPONICA'	JAPANESE BOX	54	200mm	PRUNE TO DENSE HEDGE
CGW	CASUARINA 'GREEN WAVE'	DWARF SHEOKE	6	300mm	
EM	ELAEAGNUS MACROPHYLLA	RUSSIAN OLIVE	14	200mm	PRUNE TO THICKEN
HP	HELICHRYSUM PETIOLARE	LICORICE PLANT	14	200mm	PRUNE TO THICKEN
RS	RAPHIOLEPIS 'SNOW MAIDEN'	DWARF HAWTHORN	13	300mm	PRUNE TO THICKEN
SR	SYZYGIVM AUSTRALE 'RESILIENCE'	DWARF LILLYPILLY	21	300mm	PRUNE TO THICKEN
TF	TEUCRIUM FRUTICANS	MINT GERMANDER	3	200mm	PRUNE TO KEEP COMPACT
W	WESTRINGIA FRUTICOSA 'GREY BOX'	COAST ROSEMARY	12	200mm	PRUNE TO KEEP COMPACT
<b>ACCENTS + PALMS</b>					
	AGAVE ATTENUATA	CENTURY PLANT	2	300mm	
	ALCANTERA IMPERIALIS 'SILVER PLUM'	GIANT BROMELIAD	8	300mm	
	ASPLENIUM NIDUS	BIRD'S NEST FERN	4	200mm	
	CORDYLINE FRUTICOSA 'NEGRA'	NEGRA PALM LILY	14	300mm	
	CYCAS REVOLUTA	CYCAD, SAGO PALM	4	500mm	
	PHORMIUM TENAX	NEW ZEALAND FLAX	15	300mm	
	RHAPIS EXCELSA	RHAPIS PALM	16	45 litre	
<b>GROUNDCOVERS</b>					
	CISSUS ANTARCTICA	KANGAROO VINE	18	150mm	GROUND COVER
	DICHONDRA ARGENTEA 'SILVERFALLS'	SILVER FALLS	20	150mm	OVER WALLS
	DICHONDRA REPENS	KIDNEY WEED	20	100mm	GROUND COVER
	EPIPREMNUM AUREUM	DEVIL'S IVY	10	150mm	GROUND COVER
	LIRIOPE 'EVERGREEN GIANT'	GIANT TURF LILY	12	150mm	
	LOMANDRA 'LIME TUFF'	DWARF MAT RUSH	30	150mm	
	PHILODENDRON 'ROJO CONGO'	ROJO CONGO	6	200mm	
	PHILODENDRON 'XANADU'	DWARF PHILODENDRON	76	200mm	
	POA LABILLARDIERI 'ESKDALE'	ESKDALE TUSsock GRASS	8	150mm	
	ROSMARINUS OFFICINALIS 'PROSTRATUS'	PROSTRATE ROSEMARY	8	150mm	
	TRACHELOSPERMUM JASMINOIDES	STAR JASMINE	58	150mm	PRUNE FOR DENSE GROWTH
	VIOLA ODORATA	BLUE VIOLET	10	150mm	GROUND COVER

## TERRACE PLANTERS SCHEDULE

REFER TO CC-L05

KEY	BOTANICAL NAME	COMMON NAME	No.	POT SIZE	COMMENTS
<b>CANOPY TREES</b>					
PP3	PANDANUS PENDUNCULATUM	SCREW PALM	1	100litre	LEVEL 1 PLANTER
<b>SHRUBS + ACCENTS</b>					
AS	ADENANTHOS SERICEUS	COASTAL WOOLYBUSH	1	300mm	PRUNE TO MAINTAIN
	AGAVE ATTENUATA	CENTURY PLANT	5	200mm	LEVEL 1 PLANTER
	ALCANTERA IMPERIALIS 'SILVER PLUM'	SILVER PLUM	2	300mm	LEVEL 1 PLANTER
BBC	BANKSIA SPINULOSA 'BIRTHDAY CANDLES'	DWARF HAIRPIN BANKSIA	5	200mm	LEVEL 1 PLANTER
Cs	CRASSULA ARBORESCENS	BLUE MONEY PLANT	22	200mm	LEVEL 1 PLANTER
RSM	RAPHIOLEPIS 'SNOW MAIDEN'	DWARF HAWTHORN	45	300mm	LEVELS 1, 2, 3, 4 PLANTERS
R	RAPHIOLEPIS 'ORIENTAL PEARL'	DWARF HAWTHORN	17	200mm	LEVEL 1 + 4 PLANTERS
	SANSEVIERA TRIFASCIATA	SNAKE PLANT	40	200mm	LEVEL 1 + 4 PLANTERS
TF	TEUCRIUM FRUTICANS	MINT GERMANDER	3	200mm	LEVEL 1 PLANTER
WF	WESTRINGIA FRUTICOSA 'GREY BOX'	COAST ROSEMARY	5	200mm	LEVEL 1 PLANTER
<b>GROUNDCOVERS</b>					
	CASUARINA 'COUSIN IT'	PROSTRATE SHEOKE	36	150mm	LEVEL 1 PLANTER
	CASUARINA 'COUSIN IT'	PROSTRATE SHEOKE	36	200mm	LEVELS 2,3,4 PLANTERS
	LOMANDRA 'LIME TUFF'	DWARF MAT RUSH	20	150mm	LEVEL 1 PLANTER
	ROSMARINUS OFFICINALIS 'PROSTRATUS'	PROSTRATE ROSEMARY	10	150mm	LEVEL 1 PLANTER
	SENECIO SERPENS	BLUE CHALKSTICK	10	150mm	LEVEL 1 PLANTER
	SENECIO CYLINDRICUS	NARROW CHALKSTICKS	12	150mm	LEVEL 1 PLANTER

## GENERAL SPECIFICATIONS

### LANDSCAPE HARDWORKS

ALL DEMOLITION AND SITE CONSTRUCTION SHALL BE EXECUTED IN ACCORDANCE WITH DA CONSENT CONDITIONS AND ARCHITECTURAL + ENGINEERING SPECIFICATIONS BY FULLY QUALIFIED CONTRACTORS.

LANDSCAPE WORKS SHALL GENERALLY BE UNDERTAKEN IN ACCORDANCE WITH COUNCIL APPROVED PLANS AND SHALL BE COMPLIANT WITH:

AS4970-2009 Protection of trees on development sites  
AS 4970-2009/Amdt 1-2010 Protection of trees on development sites

AS4373-2007 Pruning of amenity trees  
AS4419-2018 Soils for landscaping and garden use

AS4454-2012 Composts, soil conditioners and mulches  
AS3743-2003 Potting mixes

AS2303-2018 Tree stock for landscape use  
LEAKE S. + HAEGE E. Soils for Landscape Development Specifications

ALL LANDSCAPE WORKS SHALL BE EXECUTED BY A COMPETENT LANDSCAPE CONTRACTOR EXPERIENCED IN HORTICULTURAL PRACTICE AND LANDSCAPE CONSTRUCTION. THE CONTRACTOR SHALL HOLD A CURRENT NSW STRUCTURAL LANDSCAPE LICENSE.

IRRIGATION WORKS SHALL BE EXECUTED BY A CONTRACTOR SUITABLY QUALIFIED AND LICENSED BY NSW DEPARTMENT OF FAIR TRADING FOR URBAN IRRIGATION AND SHALL COMPLY WITH PLANS + SPECIFICATIONS BY GREEN STAR WATER SOLUTIONS (2023).

### TREE PROTECTION

TREE PROTECTION SHALL BE INSTALLED PRIOR TO COMMENCEMENT OF WORKS AROUND EXISTING TREES TO BE RETAINED IN ACCORDANCE WITH SPECIFICATIONS BY BOTANICS (2023), CONSENT CONDITIONS AND STANDARD INDUSTRY PRACTICES. CARE SHALL BE TAKEN AT ALL TIMES TO PROTECT EXISTING TREE ROOTS + CANOPY.

### SOIL PREPARATION + PLANTING SOILS

PLANTING BEDS SHALL BE PREPARED GENERALLY IN ACCORDANCE WITH DETAILS (SHEET L07)

IMPORTED SOILS:

THE FOLLOWING SPECIFICATIONS APPLY GENERALLY TO DISTURBED AREAS OF THE SITE WHERE EXCAVATION FOR CONSTRUCTION REQUIRES REINSTATEMENT OF LEVELS USING IMPORTED SOILS:

#### STANDARD TOPSOIL 'A HORIZON':

EQUAL TO LEAKE + HAEGE SPECIFICATION D2 GARDEN BED PLANTING SOIL eg Benedict's Smartmix 6 SANDY LOAM TO CLAY LOAM MIX DESIGNED FOR GENERAL PURPOSE ON-GRADE GARDEN BED PLANTING WITH A HIGH NUTRIENT REQUIREMENT FOR SUSTAINED OPTIMUM GROWTH.

USE 'LOW P' OPTIONS FOR NATIVE PLANTS  
EXAMPLE COMPONENTS: SANDY LOAM SOIL 70-90% BY VOLUME  
COMPOSTED SOIL CONDITIONER 10-30% FOR NATIVES  
COMPOSTED SOIL CONDITIONER 20-60% FOR EXOTIC SPECIES

#### STANDARD SUBSOIL 'B HORIZON':

EQUAL TO LEAKE + HAEGE SPECIFICATION D4 GARDEN BED PLANTING SOIL eg Benedict's Smartmix 7 SANDY LOAM, WELL DRAINED MEDIUM WITH LOW ORGANIC MATTER FOR BACKFILLING BELOW 300mm, WELL BALANCED CHEMICALLY, NOT SALINE OR SODIC OR EXCESSIVELY ACIDIC OR CALCIUM DEFICIENT AND NOT DISPERSIVE. USE 'LOW P' OPTION

THE MIX MAY USE A SMALL PROPORTION OF SITE TOPSOIL OR SUBSOIL, PROVIDED THE ORGANIC MATTER UPPER LIMIT IS NOT EXCEEDED.  
EXAMPLE COMPONENTS: SANDY LOAM SOIL 60-80% BY VOLUME  
CLAY LOAM 20-30% BY VOLUME  
COMPOSTED SOIL CONDITIONER <10% BY VOLUME

#### ON-SLAB TOPSOIL 'A HORIZON' INCLUDING PLANTER BOXES:

LEAKE + HAEGE SPECIFICATION E1 ON SLAB SOIL MEDIA 'A' HORIZON eg Benedict's Smartmix 4 OPEN GRANULAR WELL-DRAINED GROWING MEDIA WITH SATURATED DENSITY OF LESS THAN 2400 KG/M<sup>3</sup> FOR USE IN THE TOP 300mm OF ON-SLAB INSTALLATIONS INCLUDING PLANTER BOXES AND CONTAINERS. GENERALLY, SOIL SHALL BE FREE OF 'UNWANTED MATERIAL' WITH PHYSICAL PROPERTIES OF POTTING MIX ASSESSED BY AS 3743. USE 'LOW P' OPTION FOR NATIVE PLANTS.

EXAMPLE COMPONENTS: SANDY LOAM SOIL OR SITE TOPSOIL 20-40% BY VOLUME  
HORTICULTURAL ASH, PERLITE, OR SIMILAR LOW-DENSITY MINERAL MATTER 30-60% BY VOLUME  
COMPOSTED SOIL CONDITIONER 20-30% BY VOLUME

#### ON-SLAB SUBSOIL 'B HORIZON' INCLUDING PLANTER BOXES:

LEAKE + HAEGE SPECIFICATION E2 ON SLAB SOIL MEDIA 'B' HORIZON eg Benedict's Smartmix 5 OPEN GRANULAR WELL-DRAINED GROWING MEDIA WITH ALL-UP SATURATED DENSITY OF LESS THAN 2400KG G/M<sup>3</sup> FOR USE BELOW 300mm IN ON-SLAB INSTALLATIONS

GENERALLY THE SOIL MUST BE FREE OF 'UNWANTED MATERIAL' AND MUST COMPLY WITH AS 3743.  
EXAMPLE COMPONENTS: SANDY LOAM SOIL OR SITE TOPSOIL 10-30% BY VOLUME  
HORTICULTURAL ASH, PERLITE, OR SIMILAR LOW-DENSITY MINERAL MATTER 30-50% BY VOLUME  
COMPOSTED 10mm PINE BARK 20-40% BY VOLUME  
COMPOSTED SOIL CONDITIONER <20% BY VOLUME

#### IMPROVED SITE SOILS:

FOR PLANTING BEDS WHERE EXISTING SITE SOIL HAS BEEN RETAINED AT OR NEAR FINISHED LEVELS IMPROVED SITE SOIL SHALL BE USED FOR PLANTING. SITE SOIL TO A DEPTH OF 300mm SHALL BE AMENDED USING 10% 'GREENLIFE MULCH' CULTIVATED INTO SITE SOIL

#### GENERAL NOTES:

DO NOT INTRODUCE ORGANIC MATTER LOWER THAN 300mm. BACKFILL AT DEPTH WITH SUBSOIL ONLY. CONTRACTOR SHALL UNDERTAKE pH TESTS AND ADJUST WHERE NECESSARY TO ACHIEVE A pH WITHIN THE 5.5 - 7.5 RANGE. MIX IN GYPSUM AT MANUFACTURER'S RECOMMENDED RATES IF CLAY SOIL ENCOUNTERED.

#### PLANTING

ALL PLANTS SHALL BE WELL GROWN AND DISEASE FREE. PLANTING SHALL BE IN ACCORDANCE WITH PLANTING SCHEDULE. TREES SHALL BE GROWN TO AS2303-2016 OR NATSPEC.

#### GENERAL PLANT MATERIAL (EXOTICS AND NATIVE)

SUPPLY PLANTS IN ACCORDANCE WITH PLANTING SCHEDULE. NO SUBSTITUTIONS ARE PERMITTED WITHOUT THE CONSENT OF THE SUPERVISING LANDSCAPE ARCHITECT. TREES SHALL BE GROWN TO NATSPEC OR AS2303-2016 AND SHALL BE VIGOROUS, WELL ESTABLISHED, FREE OF DISEASE AND PESTS, HARDENED OFF, TRUE TO FORM, AND GROWN IN THEIR FINAL CONTAINERS FOR NOT LESS THAN 12 WEEKS. TREES SHALL HAVE A SINGLE LEADING SHOOT AND POTS FREE FROM WEEDS. ENSURE ANY STAKING OR GUYING REQUIRED IS REMOVED WITHIN 12 MONTHS.

#### FERTILIZER

AT PLANTING SPREAD SLOW RELEASE FERTILIZER AROUND DRIP LINE OF ALL PLANTS AT MANUFACTURER'S RECOMMENDED RATES

GENERAL APPLICATION:  
EQUAL TO OSMOCOTE PLUS TRACE ELEMENTS - ALL PURPOSE NPK 19:4 : 1:6 : 6  
NATIVE PLANTS:  
EQUAL TO OSMOCOTE PLUS TRACE ELEMENTS - NATIVE GARDENS NPK 17:9 : 0:8 : 7:3

### MULCH

#### Wood Mulch - General Planting Beds and Terrace Planter Boxes

COVER PLANTING AREAS WITH 75mm 'FOREST FINES' MULCH. ENSURE ALL MULCH IS FREE OF WEED SEED AND VEGETATIVE MATERIAL. KEEP CLEAR FROM PLANT STEM COLLARS.

#### Pebble Mulch - Whale Beach Rd Street Planting + Overland Flow Path

WHERE INDICATED AROUND EXISTING TREES ON ROAD RESERVE AND IN OVERLAND FLOW PATH, USE 50mm DIAMETER PEBBLE MULCH INSTALLED AT 60mm DEPTH.

### PUBLIC DOMAIN

#### Street Trees Whale Beach Rd (Refer to Detail 02)

EXISTING STREET TREE PLANTING BED PREPARATION WITHIN WHALE BEACH RD PUBLIC DOMAIN SHALL BE UNDERTAKEN IN ACCORDANCE WITH TYPICAL DETAILS AND SPECIFICATIONS FOR 'Improved Site Soil' (SHEET L06) AND NORTHERN BEACHES COUNCIL CONSENT CONDITIONS. WHALE BEACH RD PLANTING BEDS SHALL BE FINISHED WITH 50mm DIAMETER PEBBLE MULCH. IRRIGATION IF REQUIRED SHALL BE IN ACCORDANCE WITH SPECIFICATIONS PROVIDED BY GREEN STAR WATER SOLUTIONS.

#### Turf Surf Rd (Refer to Details 0 Sheet L07)

ALL DISTURBED AREAS WITHIN THE SURF RD PUBLIC DOMAIN THAT ARE NOT SPECIFIED AS PLANTING BEDS SHALL BE MADE GOOD WITH BUFFALO LAWN IN ACCORDANCE WITH TYPICAL DETAIL 05.

### LAWN

TURF SHALL BE 'SIR WALTER' BUFFALO. TURF ROLLS SHALL BE A MINIMUM OF 25mm THICK SUPPLIED FROM A SPECIALIST GROWER OF CULTIVATED TURF. IT SHALL BE OF EVEN THICKNESS, FREE FROM WEEDS. TURF SHALL BE DELIVERED WITHIN 24HRS OF CUTTING AND LAID WITHIN 24 HRS OF DELIVERY. CONTRACTOR SHALL LAY CLOSE BUTTED IN STRETCHER PATTERN WITH STAGGERED JOINTS TO FINISH FLUSH WITH ADJOINING SURFACES AFTER TAMPING. LAY ON MINIMUM 150mm COMMERCIAL QUALITY SANDY LOAM TURF UNDERLAY. LIGHTLY TAMP TO AN EVEN SURFACE IMMEDIATELY AFTER LAYING. DO NOT USE ROLLER. ENSURE ROLLS ARE NOT ALLOWED TO DRY OUT AND WATER IMMEDIATELY AFTER LAYING AS NECESSARY TO ENSURE TOPSOIL IS KEPT MOIST TO 100mm DEPTH. PROTECT NEWLY LAID TURF FROM PEDESTRIAN AND VEHICULAR TRAFFIC UNTIL ESTABLISHED. FERTILISE WITHIN 2 WEEKS OF LAYING WITH AN APPROVED LAWN FERTILISER APPLIED TO MANUFACTURER'S RECOMMENDATIONS. APPLY ADDITIONAL FERTILISER AS REQUIRED TO MAINTAIN HEALTHY GROWTH. ONCE ESTABLISHED, MOW TO MAINTAIN GRASS HEIGHT BETWEEN 30-50mm.

### LAWN EDGING

EDGE JUNCTIONS OF LAWN AND PLANTING BEDS OR OTHER SOFT SURFACES WITH MILD STEEL EDGING.

#### OVERLAND FLOW PATH (Detail 05 Sheet L07)

OVERLAND FLOW PATH SHALL BE PROVIDED ON WHALE BEACH ROAD RESERVE AND ALONG SOUTHERN BOUNDARY OF SITE FROM WHALE BEACH ROAD TO SURF ROAD IN ACCORDANCE WITH STORMWATER ENGINEER'S SPECIFICATIONS. REFER TO DETAIL PLANS BY BARRENJOE CONSULTING ENGINEERS. SOIL PREPARATION, PLANTING + PEBBLE MULCH SHALL GENERALLY BE INSTALLED IN ACCORDANCE WITH LANDSCAPE DETAIL 09.

### PEBBLES

WHERE INDICATED ON WHALE BEACH ROAD RESERVE PLANTING BEDS AND OVERLAND FLOW PATHS, PLANTING BEDS SHALL BE FINISH WITH A 60mm LAYER OF PEBBLES.  
PEBBLE: 50mm DIAMETER RIVER PEBBLE eg Nepean River Pebbles

### FENCES

NO NEW BOUNDARY FENCES ARE PROPOSED TO NORTHERN BOUNDARY. WHERE REQUIRED FOR PRIVACY OR SAFETY, FENCING SHALL BE PROVIDED TO SOUTHERN BOUNDARY IN CONSULTATION WITH ADJOINING PROPERTY OWNERS. WHERE REQUIRED, SIDE BOUNDARY FENCES SHALL BE IN ACCORDANCE WITH ARCHITECT'S DETAILS.

### RETAINING WALLS

MASONRY / STONE RETAINING WALLS SHALL BE INSTALLED BY OTHERS IN ACCORDANCE WITH ARCHITECTURAL / ENGINEERING PLANS.

### IRRIGATION

Refer to plans + specifications by Green Star Water Solutions.  
A WATER BOARD APPROVED, FULLY AUTOMATIC DRIP IRRIGATION SYSTEM SHALL BE INSTALLED TO ALL PLANTING BEDS + PLANTER BOXES IN ACCORDANCE WITH DETAILED PLANS AND SPECIFICATIONS PROVIDED BY GREEN STAR WATER SOLUTIONS. WATER SOURCE SHALL BE SUPPLIED BY BUILDER.

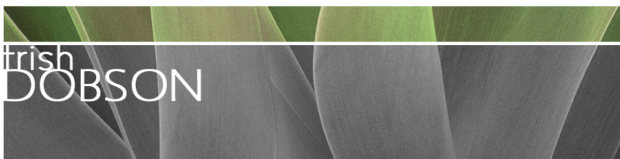
AFTER INSTALLATION, SYSTEM SHALL BE TESTED AND ADJUSTED AND ACCEPTANCE SHALL BE SUBJECT TO SATISFACTORY TESTING. CONTRACTOR SHALL HANDOVER THE SYSTEM WITH CLEAR INSTRUCTIONS AS TO ITS OPERATION.

### WEED ERADICATION

ALL WEED SPECIES SHALL BE REMOVED FROM SITE IN ACCORDANCE WITH BIOSECURITY ACT 2015. NO WEED SPECIES SHALL BE PLANTED ON SITE.

### MAINTENANCE

THE CONTRACTOR SHALL MAINTAIN THE LANDSCAPE WORKS, INCLUDING REPLACEMENT OF DEAD OR DAMAGED PLANT MATERIAL, WEED AND PEST CONTROL, PEST CONTROL, FERTILIZING, AND WATERING UNTIL HANDOVER OF THE WORKS.  
LAWNS SHALL BE MOWN AT 14 DAY INTERVALS, TRIMMING EDGE, REPAIRING AND REPLACING FAILED TURF OR BARE PATCHES UNTIL HANDOVER OF THE WORKS.  
IRRIGATION SYSTEM SHALL BE TESTED, ADJUSTED AND REPAIRED.  
STAKES (IF REQUIRED) SHALL BE MAINTAINED / MADE GOOD.



trish dobson landscape architecture  
34A MARINE PARADE, AVALON NSW 2107  
0408 983020  
trish@trishdobson.com.au

TRISH DOBSON  
REGISTERED LANDSCAPE ARCHITECT HORTICULTURIST ARBORIST  
ABN 57 241 486 158

CONSTRUCTION CERTIFICATE  
NEIGHBOURHOOD SHOP TOP HOUSING  
for Leslie Cassar

231 Whale Beach Rd Whale Beach NSW

## PLANTING SCHEDULE + SPECIFICATIONS

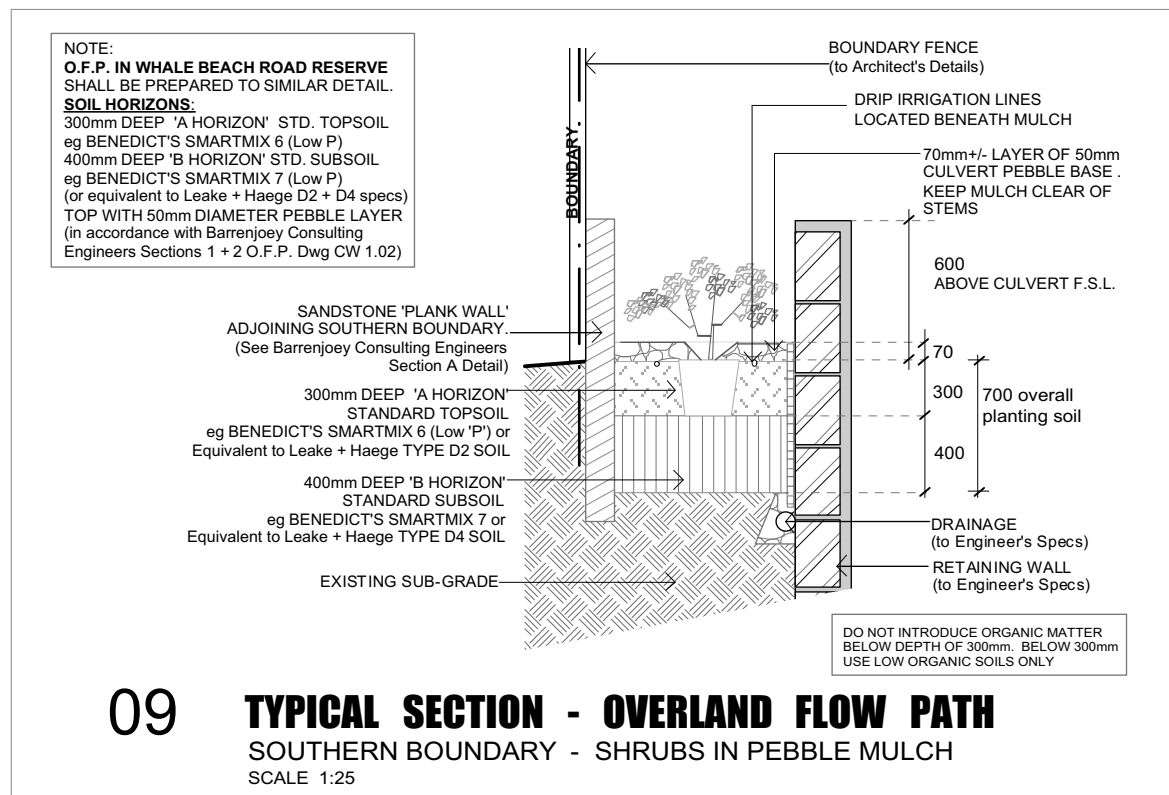
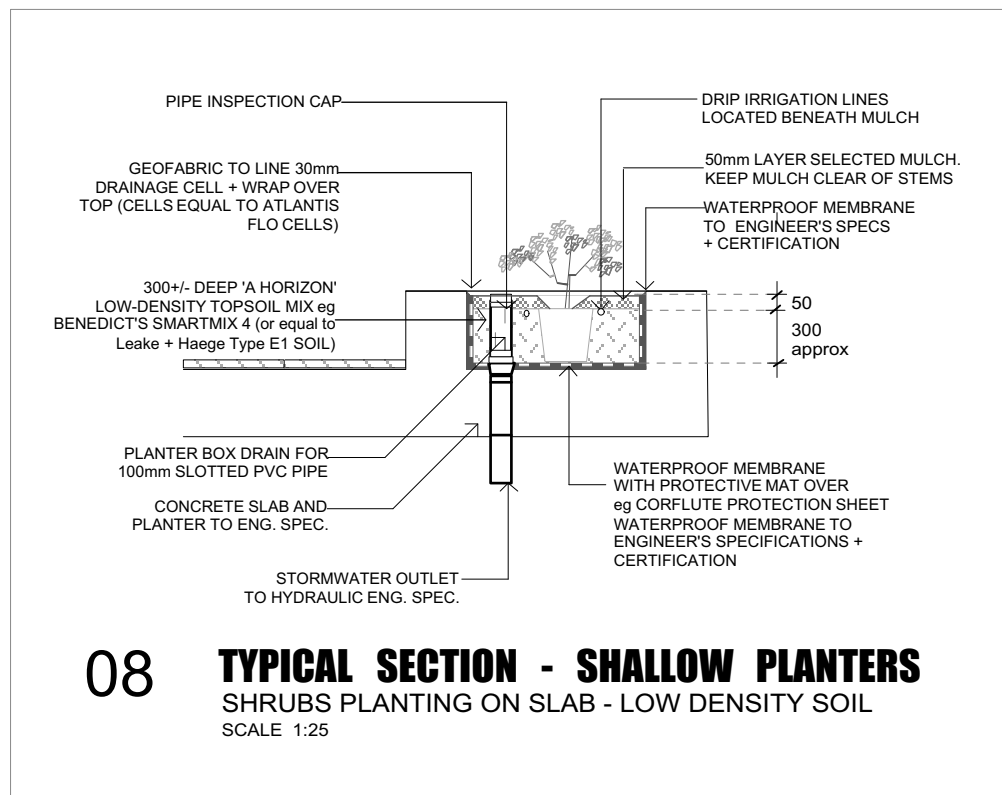
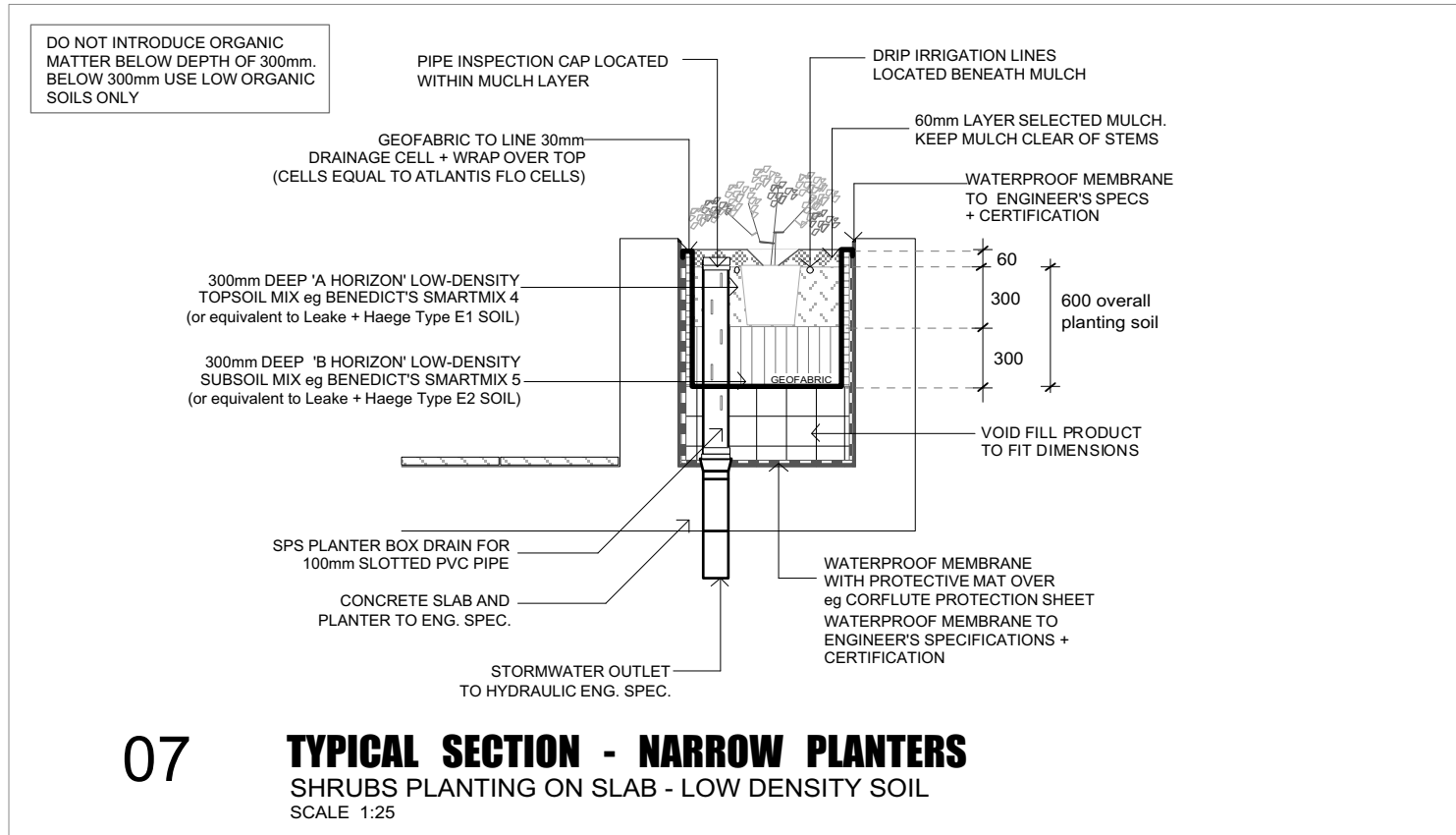
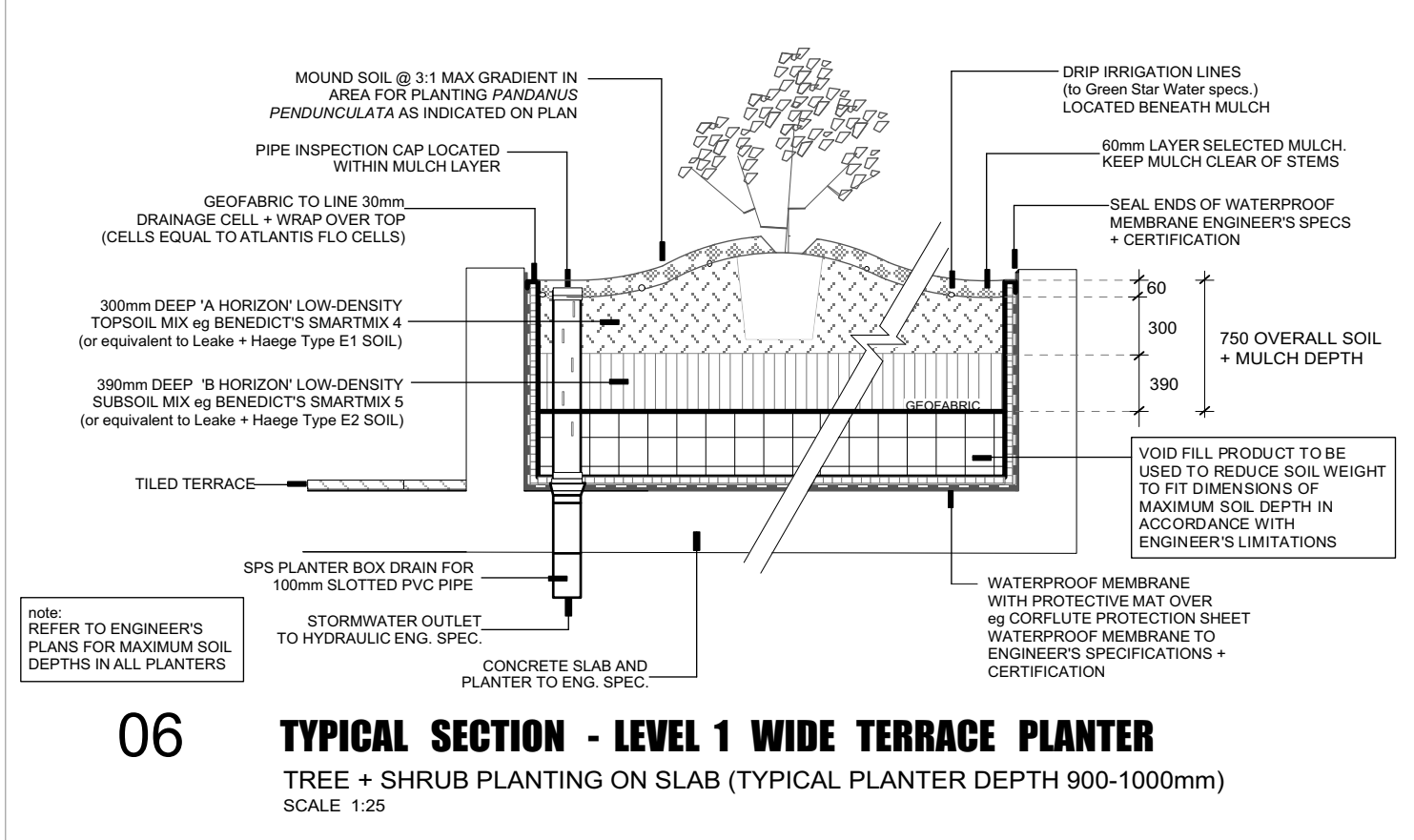
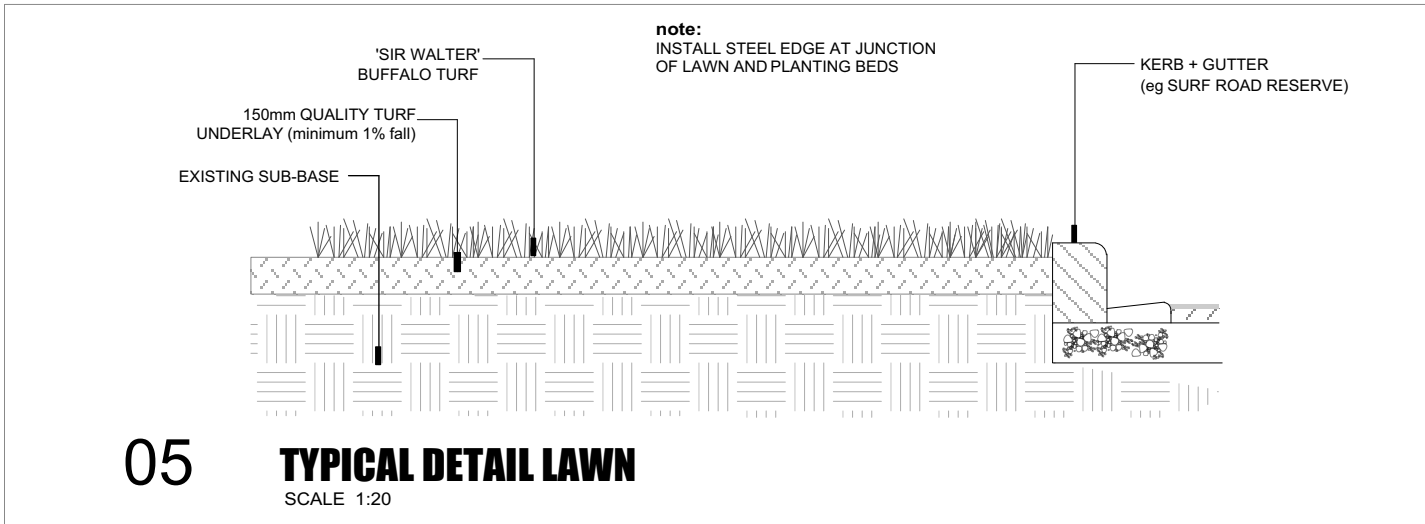
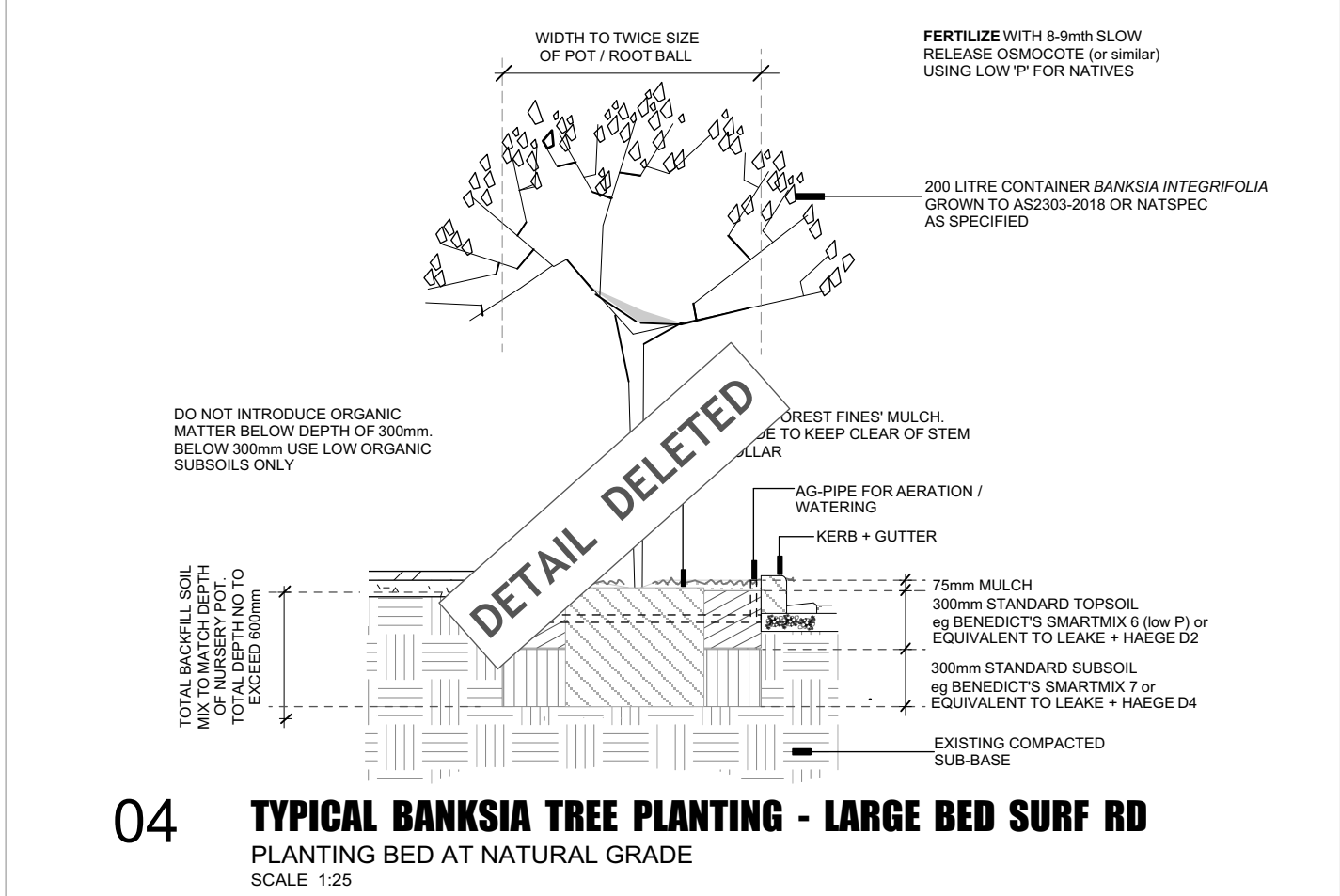
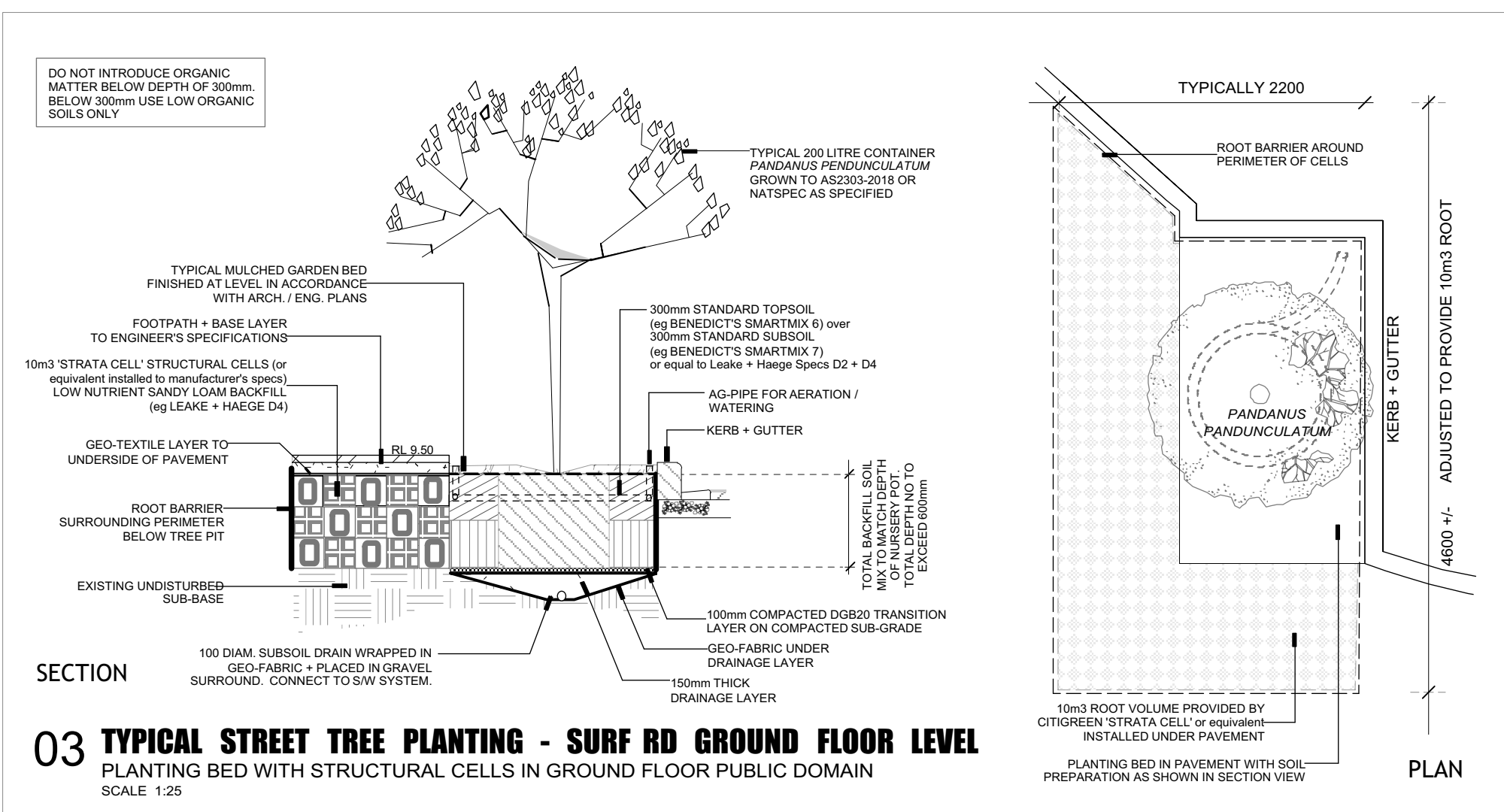
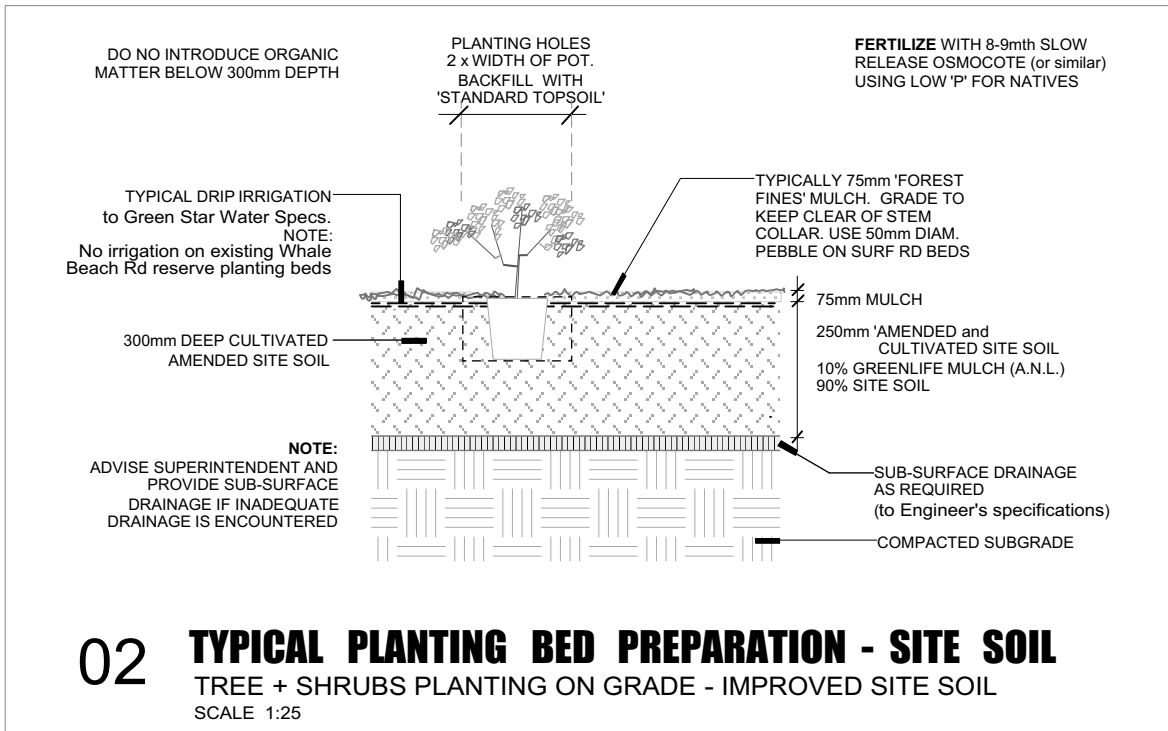
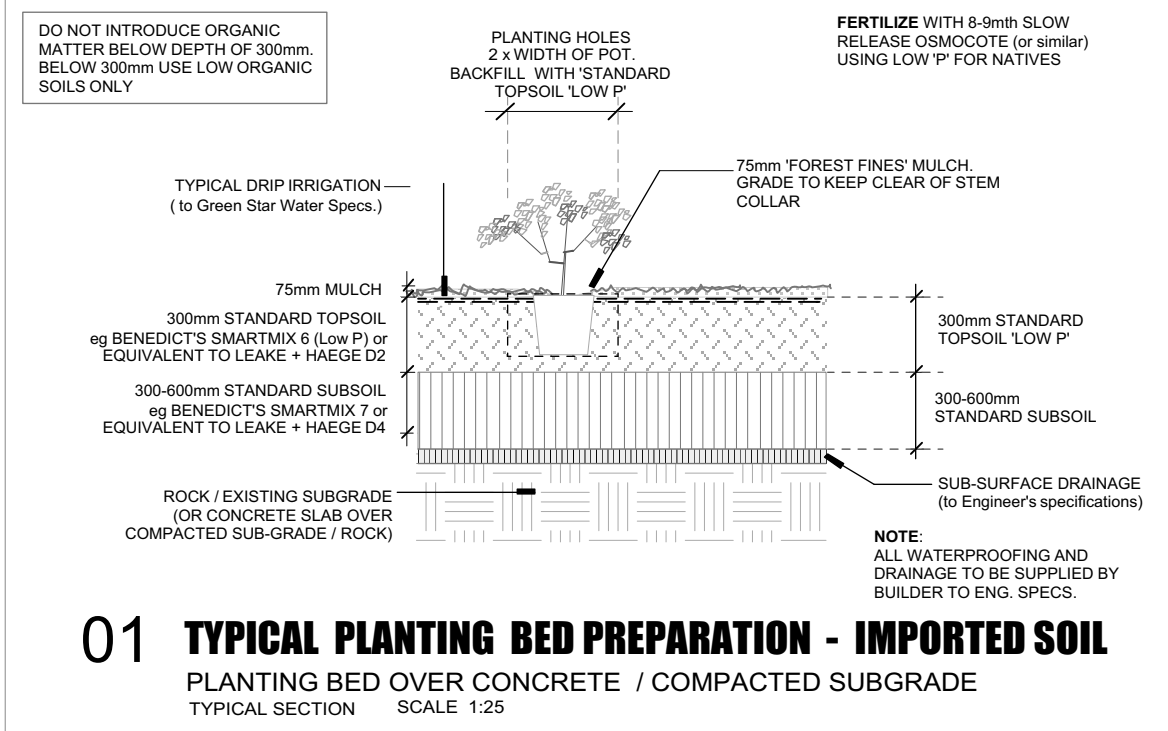
N.T.S. @ A2 SCALE  
(Rev A 23.10.24) 8.7.24 DATE  
1911 JOB  
CC ISSUE  
6 OF 7 SHEET

1911 / CC-L06A DWG

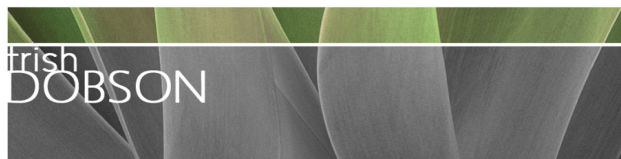
### AMENDMENTS

REV A 23.10.24 Planting deleted - parking spaces Surf Rd





AMENDMENTS  
REV A 23.10.24 Planting Detail 04 deleted - parking spaces Surf Rd



trish dobson landscape architecture  
34A MARINE PARADE, AVALON NSW 2107  
0408 983020  
trish@trishdobson.com.au  
TRISH DOBSON  
REGISTERED LANDSCAPE ARCHITECT HORTICULTURIST ARBORIST  
ABN 57 241 486 158

CONSTRUCTION CERTIFICATE  
NEIGHBOURHOOD SHOP TOP HOUSING  
for Leslie Cassar  
231 Whale Beach Rd Whale Beach NSW

LANDSCAPE DETAILS  
SCALE AS SHOWN @ A2 SCALE  
(Rev A 23.10.24) 8.7.24 DATE  
1911 JOB  
CC ISSUE  
7 OF 7 SHEET  
1911 / CC-L07A DWG