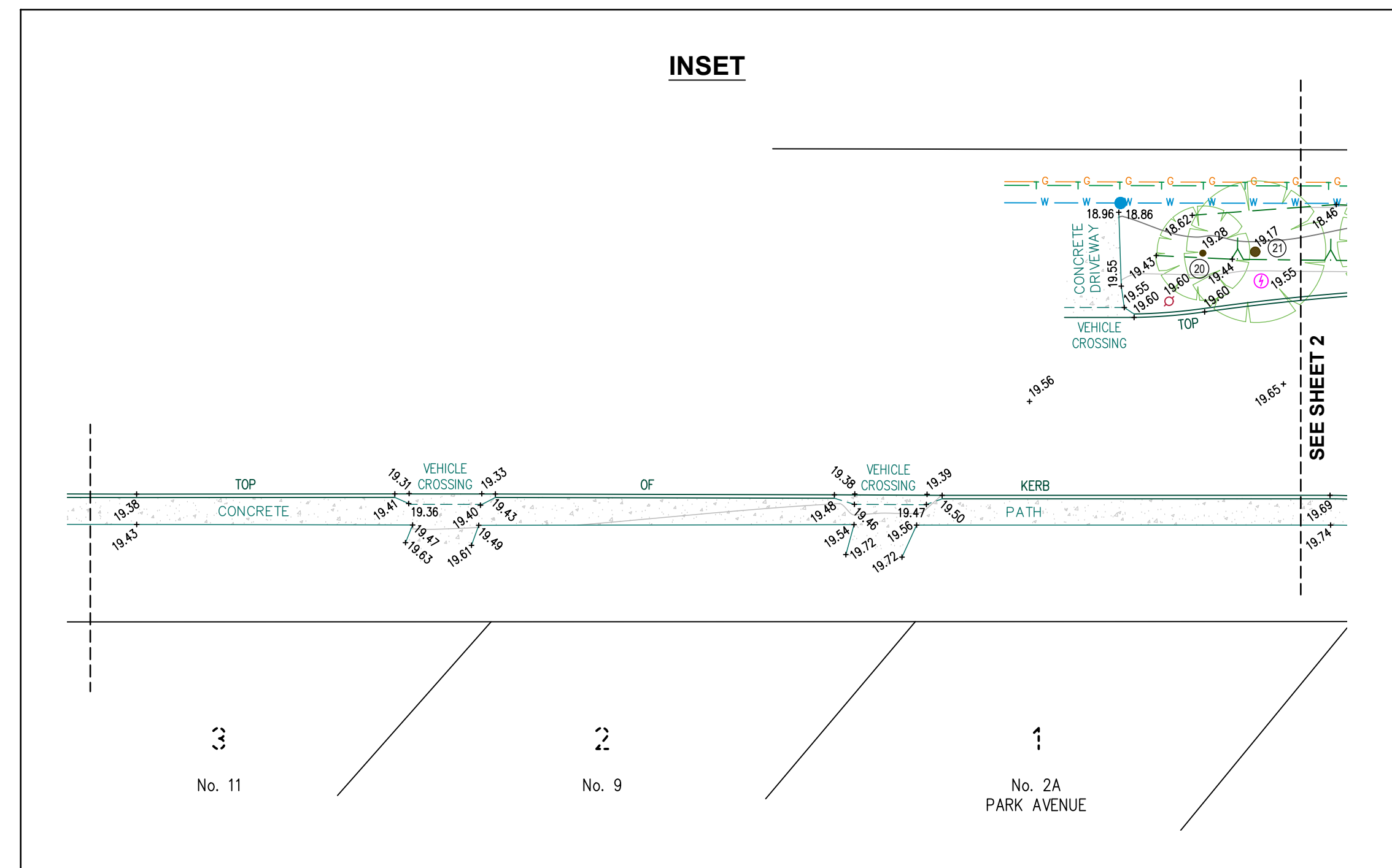
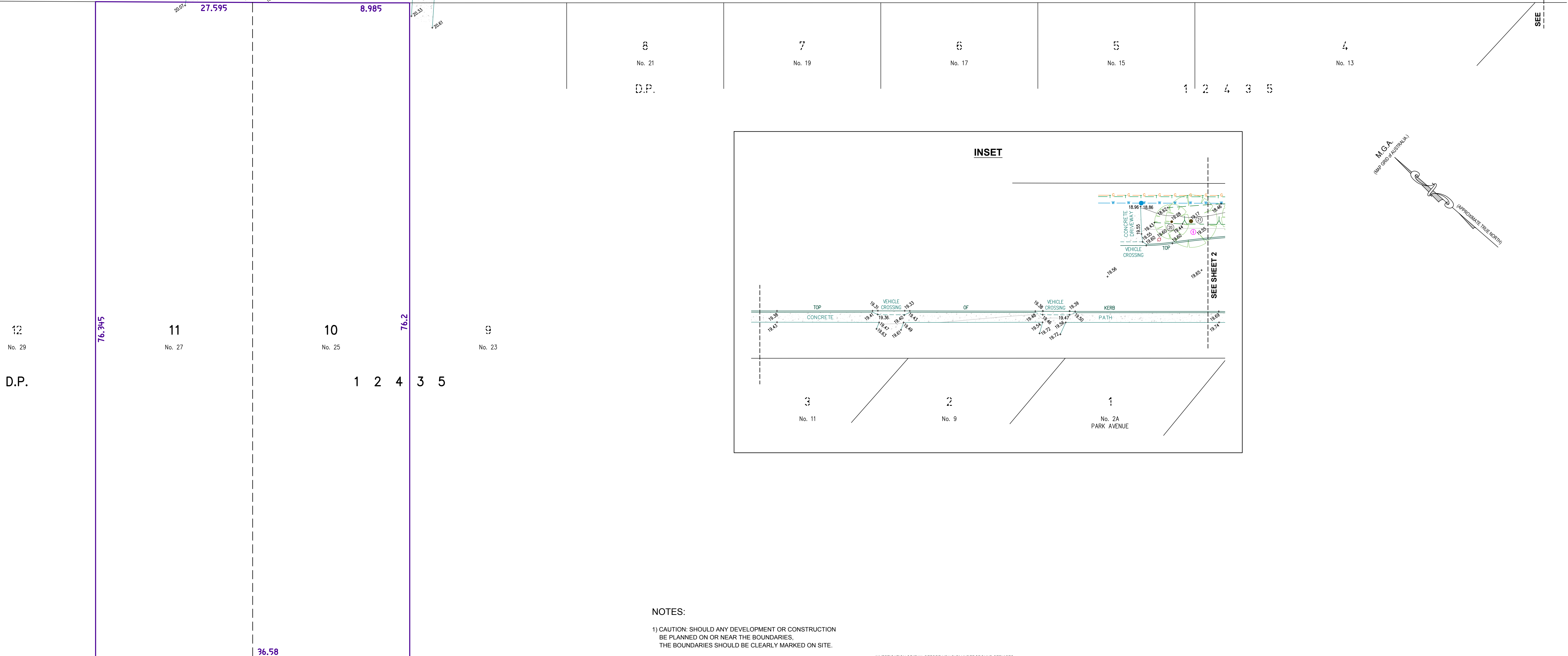
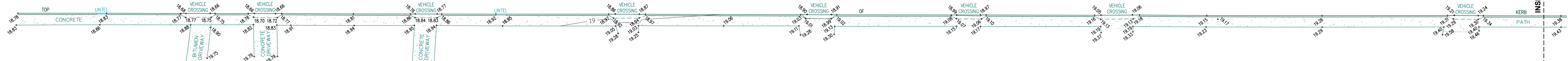


KEVIN

AVENUE



NOTES:

- CAUTION: SHOULD ANY DEVELOPMENT OR CONSTRUCTION BE PLANNED ON OR NEAR THE BOUNDARIES, THE BOUNDARIES SHOULD BE CLEARLY MARKED ON SITE.
- AREA AND DIMENSIONS HAVE BEEN SURVEYED FROM PLANS MADE AVAILABLE AT LAND REGISTRY SERVICES.
- ORIGIN OF LEVELS ON A.H.D. IS TAKEN FROM S.S.M. 11120 RL 14.483 A.H.D.
- TREE SPREADS ARE DIAGRAMMATIC ONLY AND ARE NOT SYMMETRICAL.
- UNDERGROUND (NON VISIBLE) SERVICE LINES HAVE BEEN SHOWN FROM "DIAL BEFORE YOU DIG" SERVICE AUTHORITY RECORDS & ARE DIAGRAMMATIC ONLY IN REGARD TO THEIR POSITION & WIDTH UNLESS STATED OTHERWISE.
- SPOT LEVELS ARE ACCURATE.
- CONTOUR INTERVAL 0.5 METRE.
- CONTOURS ARE INDICATIVE OF GROUND FORM ONLY. ONLY SPOT LEVELS SHOULD BE USED FOR CALCULATIONS OF QUANTITIES WITH CAUTION.

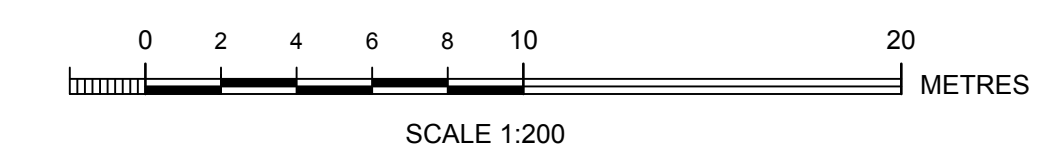
INVESTIGATION OF "DIAL BEFORE YOU DIG" UNDERGROUND SERVICES HAS BEEN MADE. DETECTION OF UNDERGROUND SERVICES IS NOT AN INTEGRAL PART OF THIS SURVEY. ALL RELEVANT AUTHORITIES SHOULD BE NOTIFIED PRIOR TO ANY EXCAVATION ON OR NEAR THE SITE.

DEVELOPERS & EXCAVATORS MAY BE HELD FINANCIALLY RESPONSIBLE BY THE ASSET OWNER SHOULD THEY DAMAGE UNDERGROUND NETWORKS.

CARELESS DIGGING CAN:

- CAUSE DEATH OR SERIOUS INJURY TO WORKERS AND THE GENERAL PUBLIC
- INCONVENIENCE USERS OF ELECTRICITY, GAS, WATER AND COMMUNICATIONS
- LEAD TO CRIMINAL PROSECUTION AND DAMAGES CLAIMS
- CAUSE EXPENSIVE FINANCIAL LOSSES TO BUSINESS
- CUT OFF EMERGENCY SERVICES
- DELAY PROJECT COMPLETION TIMES WHILE THE DAMAGE IS REPAIRED

MINIMISE YOUR RISK AND DIAL BEFORE YOU DIG.
TEL. 1100



Bee & Lethbridge
Quality Surveying & Development Solutions

Bee & Lethbridge Pty Ltd
Suite 2, 14 Starkey Street,
PO Box 330, Forestville, NSW 2087
Phone: 9451 6757 Fax: 9975 3535
Email: survey@beelth.com.au
ABN: 13 003 194 447
www.beelth.com.au

LEGEND

TREE & POINT NUMBER (SEE TABLE ON SHEET 2)	TRAFFIC SIGNAL PIT
HYDRANT	SGN
WATER METER	GAS LD
STOP VALVE	GAS METER
TELECOM. PIT	
TELECOM. PILLAR	
POWER POLE	

UNDERGROUND ELECTRIC LINES

OVERHEAD ELECTRIC LINES

BOARDS SEWER

TELECOMMUNICATION LINES

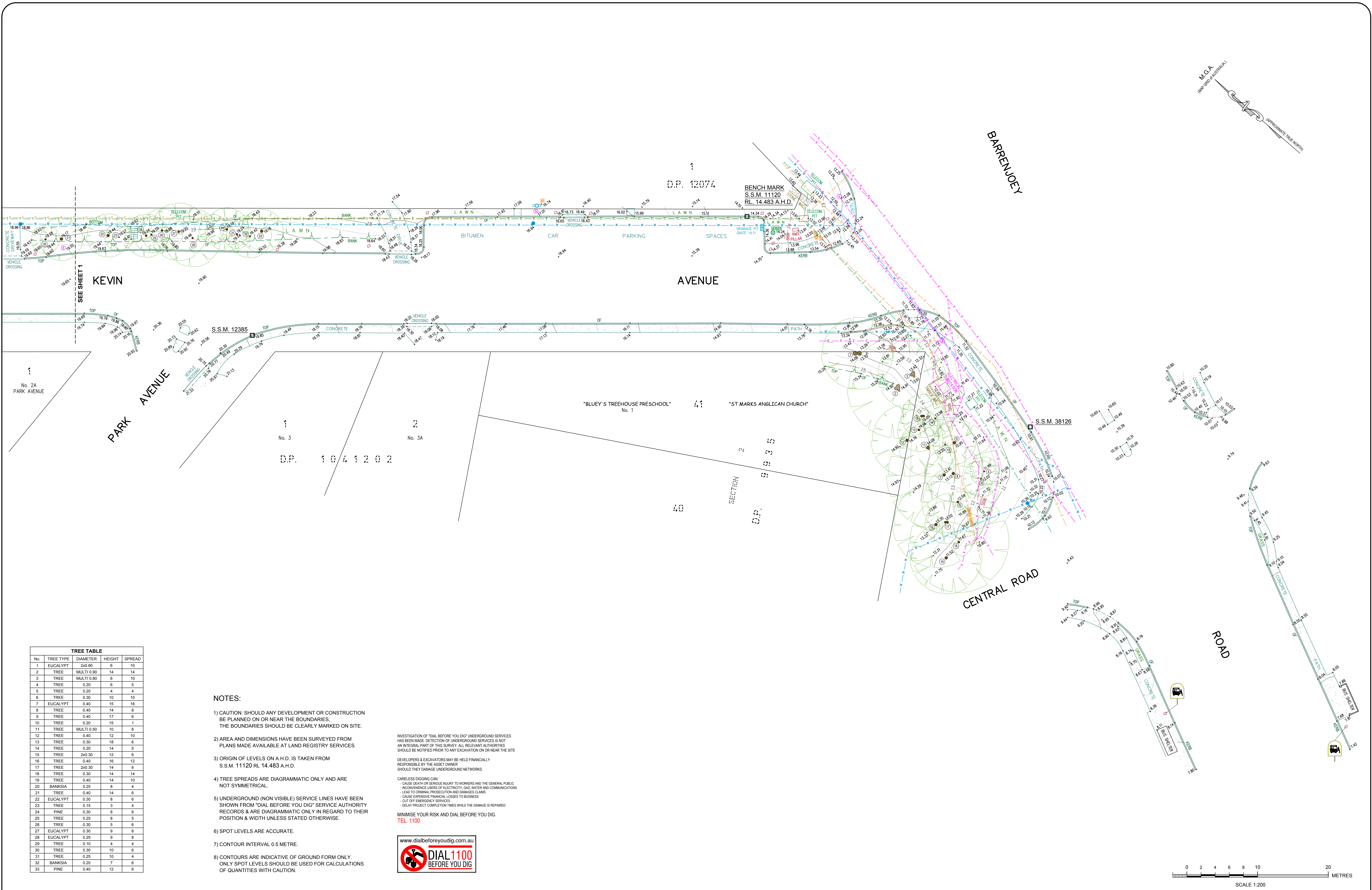
WATER LINES

GAS LINES

PLAN SHOWING BOUNDARIES, RELATIVE HEIGHTS & PHYSICAL FEATURES OVER PART OF KEVIN AVENUE & BARRENJOEY ROAD, AVALON BEACH.

L.G.A.: NORTHERN BEACHES

CLIENT	SIXJAY DEVELOPMENTS	REF No.	21372
PROPERTY	No. 25 & 27 KEVIN AVENUE, AVALON BEACH	SHEET No.	1 of 2
DATUM	A.H.D.	SCALE	1:200 @ B1
SURVEYED	L.P./S.P.	DATE	AUG. 2019
		DRAWN	R.M.
		DWG No.	21372A
		REV No.	00



No.	TREE TYPE	DIAMETER	HEIGHT	SPREAD
1	EUCALYPT	2x0.60	6	10
2	TREE	MULTI 0.90	14	14
3	TREE	MULTI 0.80	6	10
4	TREE	0.20	6	5
5	TREE	0.20	4	4
6	TREE	0.30	10	10
7	EUCALYPT	0.40	15	16
8	TREE	0.40	14	8
9	TREE	0.40	17	6
10	TREE	0.20	15	1
11	TREE	MULTI 0.50	10	8
12	TREE	0.40	12	10
13	TREE	0.30	18	6
14	TREE	0.20	14	5
15	TREE	2x0.30	12	6
16	TREE	0.40	16	12
17	TREE	2x0.30	14	6
18	TREE	0.30	14	14
19	TREE	0.40	14	10
20	BANKSIA	0.25	8	4
21	TREE	0.40	14	6
22	EUCALYPT	0.30	8	6
23	TREE	0.15	3	4
24	PINE	0.30	8	6
25	TREE	0.25	8	5
26	TREE	0.30	5	6
27	EUCALYPT	0.30	9	8
28	EUCALYPT	0.25	9	8
29	TREE	0.10	4	4
30	TREE	0.30	10	6
31	TREE	0.25	10	4
32	BANKSIA	0.20	7	6
33	PINE	0.40	12	6

- NOTES:**
- CAUTION: SHOULD ANY DEVELOPMENT OR CONSTRUCTION BE PLANNED ON OR NEAR THE BOUNDARIES, THE BOUNDARIES SHOULD BE CLEARLY MARKED ON SITE.
 - AREA AND DIMENSIONS HAVE BEEN SURVEYED FROM PLANS MADE AVAILABLE AT LAND REGISTRY SERVICES.
 - ORIGIN OF LEVELS ON A.H.D. IS TAKEN FROM S.S.M. 11120 RL. 14.483 A.H.D.
 - TREE SPREADS ARE DIAGRAMMATIC ONLY AND ARE NOT SYMMETRICAL.
 - UNDERGROUND (NON VISIBLE) SERVICE LINES HAVE BEEN SHOWN FROM "DIAL BEFORE YOU DIG" SERVICE AUTHORITY RECORDS & ARE DIAGRAMMATIC ONLY IN REGARD TO THEIR POSITION & WIDTH UNLESS STATED OTHERWISE.
 - SPOT LEVELS ARE ACCURATE.
 - CONTOUR INTERVAL 0.5 METRE.
 - CONTOURS ARE INDICATIVE OF GROUND FORM ONLY. ONLY SPOT LEVELS SHOULD BE USED FOR CALCULATIONS OF QUANTITIES WITH CAUTION.

INVESTIGATION OF 'DIAL BEFORE YOU DIG' UNDERGROUND SERVICES HAS BEEN MADE. DETECTION OF UNDERGROUND SERVICES IS NOT AN INTEGRAL PART OF THIS SURVEY. ALL RELEVANT AUTHORITIES SHOULD BE NOTIFIED PRIOR TO ANY EXCAVATION ON OR NEAR THE SITE.

DEVELOPERS & EXCAVATORS MAY BE HELD FINANCIALLY RESPONSIBLE BY THE ASSET OWNER SHOULD THEY DAMAGE UNDERGROUND NETWORKS.

CARELESS DIGGING CAN:
 - CAUSE DEATH OR SERIOUS INJURY TO WORKERS AND THE GENERAL PUBLIC
 - INCONVENIENCE USERS OF ELECTRICITY, GAS, WATER AND COMMUNICATIONS
 - LEAD TO CRIMINAL PROSECUTION AND DAMAGES CLAIMS
 - CAUSE EXPENSIVE FINANCIAL LOSSES TO BUSINESS
 - CUT OFF EMERGENCY SERVICES
 - DELAY PROJECT COMPLETION TIMES WHILE THE DAMAGE IS REPAIRED

MINIMISE YOUR RISK AND DIAL BEFORE YOU DIG.
TEL. 1100



LEGEND		UNDERGROUND ELECTRIC LINES	
TREE & POINT NUMBER (SEE TABLE ON SHEET 2)	TRAFFIC SIGNAL PIT	OVERHEAD ELECTRIC LINES	BOARDS SEWER
HYDRANT	SGN	TELECOMMUNICATION LINES	WATER LINES
WATER METER	GAS LD	GAS LINES	
STOP VALVE	GAS METER		
TELECOM. PIT			
TELECOM. PILLAR			
POWER POLE			

PLAN SHOWING BOUNDARIES, RELATIVE HEIGHTS & PHYSICAL FEATURES OVER PART OF KEVIN AVENUE & BARRENJOEY ROAD, AVALON BEACH.

L.G.A.: NORTHERN BEACHES

CLIENT	SIXJAY DEVELOPMENTS	REF No.	21372
PROPERTY	No. 25 & 27 KEVIN AVENUE, AVALON BEACH	SHEET No.	2 of 2
DATUM	A.H.D.	SCALE	1:200 @ B1
SURVEYED	L.P./S.P.	DATE	AUG. 2019
		DWG No.	21372A
		REV No.	00

Bee & Lethbridge
 Quality Surveying & Development Solutions

Bee & Lethbridge Pty Ltd
 Suite 2, 14 Starkey Street,
 PO Box 330, Forestville, NSW 2087
 Phone: 9451 6757 Fax: 9975 3535
 Email: survey@beelth.com.au
 ABN: 13 003 194 447
 www.beelth.com.au