

---

Northern Beaches Council

Planning & Development

**SCHEDULE OF COLOURS AND MATERIALS**

**Proposed Secondary dwelling  
3 Lumeah Avenue, Elanora Heights NSW 2101**

**EXTERIOR - TIMBER FRAMED WALLING**

CLADDING – SELECTED HARDIES WEATHERBOARDS – COLOUR TO BE  
EQUIVALENT OR DARKER THAN WINDSPRAY



**WINDOWS**

ALUMINIUM SLIDING WINDOWS & TRIM – WHITE COLOUR



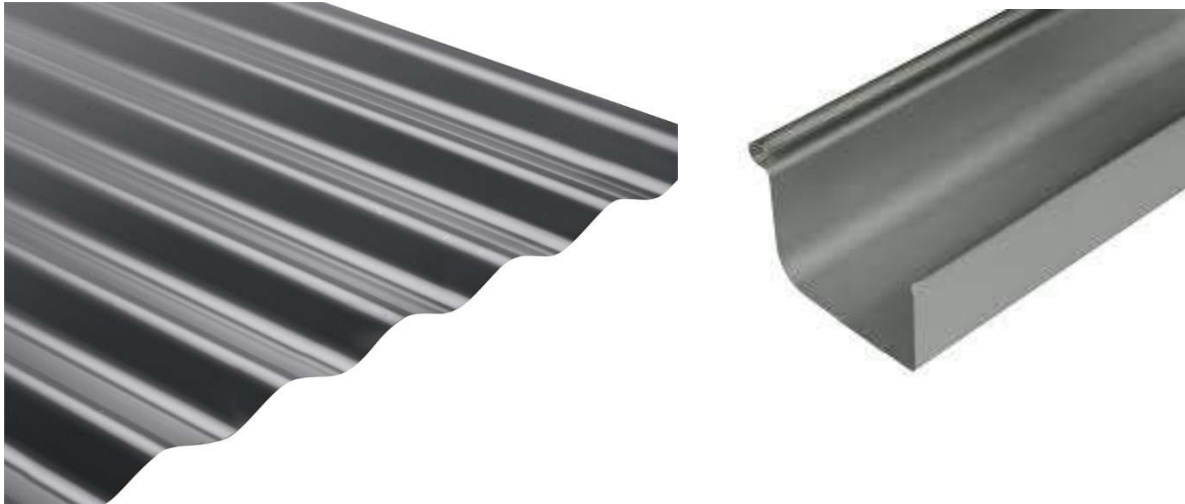
## **ROOFING**

ROOFING – CORRUGATED COLORBOND COLOUR TO BE EQUIVALENT OR DARKER THAN WINDSPRAY

## **GUTTERING, EAVES & FASCIAS**

COLORBOND GUTTERING FASCIA AND BARGES – COLOUR TO BE EQUIVALENT OR DARKER THAN WINDSPRAY

EAVES LININGS FC SHEETING PAINTED WHITE



## **FOUNDATION DWARF WALLING**

PAINTED BRICKWORK– COLOUR TO BE EQUIVALENT OR DARKER THAN WINDSPRAY

