

GENERAL NOTES: Dated - 21.07.2021

1. THESE DRAWINGS ARE NOT TO BE USED FOR CONSTRUCTION IF THE ISSUE DATE PRECEDES THE ISSUE DATE ON THE LATEST ARCHITECTURAL DRAWINGS.
2. DO NOT SCALE FROM THESE DRAWING.
3. ALL DIMENSIONS ARE TO BE VERIFIED ON SITE BY THE BUILDER BEFORE COMMENCING WITH ASSOCIATED WORK.

STORMWATER NOTES:

GENERAL:

- A1. ALL WORKS SHALL BE CARRIED OUT IN ACCORDANCE WITH THE AUSTRALIAN STANDARDS (LATEST VERSION) AND THE REQUIREMENTS OF THE LOCAL COUNCIL AND ANY APPLICABLE AUTHORITIES.
- A2. ALL LEVELS SHOWN ARE TO THE AUSTRALIAN HEIGHT DATUM (AHD) UNLESS NOTED OTHERWISE.
- A3. THE LOCATION OF ALL DRAINAGE ELEMENTS ARE SHOWN INDICATIVELY BASED ON AVAILABLE SURVEY OR OTHER INFORMATION. ALL DRAINAGE ELEMENTS ARE TO BE INSTALLED WITH CONSIDERATION TO SITE CONSTRAINTS AND THE INTENT OF THE DRAINAGE CONCEPT.
- A4. ANY MATERIAL VARIATIONS TO THE DRAINAGE CONCEPT OR DETAILED STORMWATER ELEMENTS MUST BE APPROVED BY NORTHERN BEACHES CONSULTING ENGINEERS PTY LTD PRIOR TO COMMENCEMENT.
- A5. ANY EXCAVATION OR TRENCHING FOR SERVICES ADJACENT TO A STRUCTURE OR PROPERTY BOUNDARY MUST NOT ENCROACH ON THE 'ZONE OF INFLUENCE', REFER TO THE NCC FOR FURTHER DETAILS.
- GENERAL CONSTRUCTION NOTES:**
- B1. CONTRACTORS TO LOCATE ALL EXISTING SERVICES PRIOR TO EXCAVATION AND NOTIFY ENGINEER OF ANY POTENTIAL CLASHES WITH THE PROPOSED STORMWATER DRAINAGE SYSTEM.
- B2. ANY ELEMENTS OF THE EXISTING STORMWATER SYSTEM WHICH ARE PROPOSED TO BE RETAINED MUST BE INSPECTED AND APPROVED BY AN ENGINEER PRIOR TO CONSTRUCTION AS BOTH HAVING ADEQUATE CAPACITY TO CATER FOR THE RUNOFF DIRECTED TO IT AND BEING IN ADEQUATE CONDITION FOR USE.
- B3. EXISTING STORMWATER SYSTEM ALSO TO BE INSPECTED BY A SUITABLY QUALIFIED PLUMBER PRIOR TO CONSTRUCTION AND UPGRADED AS REQUIRED IN ACCORDANCE WITH AS3500.3.
- B4. CARE SHOULD BE TAKEN WHEN UNDERTAKING WORKS IN THE VICINITY OF TREES NOT TO DISTURB THE TREE ROOT SYSTEM. HAND DIGGING OF TRENCHES MAY BE REQUIRED SUBJECT TO THE PROJECT ARBORISTS REQUIREMENTS. REFER TO THE ARBORIST REPORT FOR EXCAVATION REQUIREMENTS SURROUNDING PROTECTED TREE ROOT ZONES.
- B5. SWIMMING POOL SURCHARGE OVERFLOW TO BE CONNECTED VIA GRAVITY TO THE SEWER IN ACCORDANCE WITH AS3500. DETAILS AND CERTIFICATION BY OTHERS.
- B6. EXTENT, ALIGNMENT, DEPTH AND CONDITION OF ANY COUNCIL STORMWATER PIPELINE WITHIN A DEVELOPMENT SITE MUST BE VERIFIED PRIOR TO CONSTRUCTION AND THE ENGINEER MUST BE NOTIFIED UPON VERIFICATION. ANY NEW CONNECTION TO A COUNCIL STORMWATER PIPELINE WILL BE SUBJECT TO COUNCIL APPROVAL AND MUST BE INSTALLED IN ACCORDANCE WITH THE LOCAL COUNCIL SPECIFICATIONS.

PIPEWORK INSTALLATION:

- C1. ALL PIPES TO BE MINIMUM 100mm Ø UNLESS NOTED OTHERWISE.
- C2. ALL PIPES TO BE uPVC SEWER GRADE TO AS 1254 UNLESS NOTED OTHERWISE.
- C3. ALL PIPES TO BE LAYED AT 1 % MINIMUM GRADE UNLESS NOTED OTHERWISE.
- C4. ALL CONNECTIONS INTO EXISTING PIPES MUST BE MADE IN THE DIRECTION OF FLOW
- C5. ANY NEW uPVC CONNECTIONS INTO EXISTING R.C. PIPES MUST BE MADE INTO THE TOP HALF OF THE PIPE USING A FLOWCON CONNECTION FITTING U.N.O
- C6. ALL PIPES SHALL BE LAID ON A 75mm SAND BED, COMPACTED TO 100% S.M.D.D. BELOW PAVEMENTS. (NO COMPACTION REQUIRED BELOW LANDSCAPING) COVER TO SURFACE FROM TOP OF PIPE TO BE 300mm MINIMUM. BACKFILL TO BE ADEQUATELY CONSOLIDATED AROUND PIPES BY METHOD OF RAMMING AND WATERING IN. TRENCHES TO BE FILLED WITH NO-FINES GRANULAR MATERIAL AS SPECIFIED.
- C7. ALL EXISTING EARTHENWARE PIPES TO BE UPGRADED TO uPVC.
- C8. MINIMUM PIPE COVER TO ALL IN-GROUND PIPEWORK SHALL BE CARRIED OUT IN ACCORDANCE WITH TABLE 7.1 - AS3500.3.
- C9. ALL SUSPENDED PIPE FIXINGS ARE TO BE CARRIED OUT IN ACCORDANCE WITH AS2032.
- C10. ENSURE THAT ALL STORMWATER PITS AND PIPES ARE LOCATED CLEAR FROM TREE ROOT SYSTEMS.
- C11. ALL PIPEWORK MUST BE INSTALLED WITHIN THE SITE BOUNDARY OF THE DEVELOPMENT SITE. ANY NEW OR EXISTING PIPEWORK EXTENDING THROUGH PRIVATE PROPERTY BEYOND THE BOUNDARY OF THE DEVELOPMENT SITE MUST BE CONTAINED SOLELY WITHIN A DRAINAGE EASEMENT. IF NO DRAINAGE EASEMENT EXISTS, A NEW DRAINAGE EASEMENT MUST BE SOUGHT AND REGISTERED PRIOR TO UTILISING OR INSTALLING PIPEWORK THROUGH NEIGHBOURING PROPERTIES. CONTACT THE ENGINEER IF A DRAINAGE EASEMENT CANNOT BE OBTAINED.

ROOF DRAINAGE:

- D1. ALL DOWN PIPES TO BE 100mm Ø UNLESS NOTED OTHERWISE.
- D2. DOWN PIPE LOCATIONS ARE INDICATIVE ONLY. LOCATIONS TO BE CONFIRMED WITH ARCHITECT PRIOR TO COMMENCEMENT OF WORK.
- D3. PROVIDE CLEANING EYES AT ALL DOWNPIPES.
- D4. GUTTER GUARDS MUST BE INSTALLED ON ALL GUTTERS UNLESS NOTED OTHERWISE.
- D5. ALL EAVES GUTTER AND VALLEY GUTTER SYSTEMS MUST BE INSTALLED IN ACCORDANCE WITH AS3500.3 REQUIREMENTS.
- D6. ALL BOX GUTTER SYSTEMS MUST BE INSTALLED STRICTLY IN ACCORDANCE WITH THE DETAILS SHOWN ON THE APPROVED STORMWATER MANAGEMENT PLAN. IF NO DETAILS ARE SHOWN, THE BOX GUTTER SYSTEM MUST BE INSTALLED IN ACCORDANCE WITH AS3500.3. IF ANY CHANGE TO THE BOX GUTTER SYSTEM CONFIGURATION IS PROPOSED, THE ENGINEER MUST BE NOTIFIED FOR A RE-DESIGN. IF THE INSTALLED BOX GUTTER DOES NOT STRICTLY COMPLY WITH THE DESIGN DETAILED ON THE STORMWATER MANAGEMENT PLAN, CERTIFICATION OF THE HYDRAULIC SYSTEM MAY BE REFUSED.
- D7. ALL GREEN ROOFS, PEBBLED ROOFS AND PLANTERS WITH A CONCRETE BASE MUST BE WATERPROOFED AND HAVE DRAINAGE CELL INSTALLED IN ACCORDANCE WITH THE MANUFACTURERS SPECIFICATION.

PITS:

- E1. ALL STORMWATER PITS MUST BE INSTALLED IN ACCORDANCE WITH AS3500.3.
- E2. ALL CONCRETE PITS TO BE CAST INSITU OR, IF PRECAST, APPROVED BY ENGINEER. CAST INSITU PITS TO HAVE 150mm THICK CONCRETE WALLS AND BASE. WALLS TO BE REINFORCED WITH 1 N12 TOP TIE UNLESS NOTED OTHERWISE. CAST INSITU PITS GREATER THAN 900 DEEP TO BE MINIMUM 900x600 AND TO HAVE 150mm THICK CONCRETE WALLS AND BASE. WALLS TO BE REINFORCED WITH N12 AT 300 EACH WAY UNLESS NOTED OTHERWISE.
- E3. MINIMUM INTERNAL DIMENSIONS FOR STORMWATER AND INLET PITS TO BE IN ACCORDANCE WITH TABLE 8.2, AS3500.3.
- E4. ALL PITS GREATER THAN 1200mm DEEP SHALL HAVE STEP IRONS INSTALLED. STEP IRON INSTALLATION MUST BE IN ACCORDANCE WITH THE RELEVANT AUSTRALIAN STANDARDS.



Consulting Engineers

STRUCTURAL - CIVIL - STORMWATER - REMEDIAL

- E5. THE BOUNDARY OR SILT ARRESTOR PIT MUST INCORPORATE A SUMP OF MINIMUM 200mm DEPTH BELOW THE INVERT OF THE OUTLET PIPE AND A MAXI-MESH SCREEN AS PER LOCAL COUNCIL AND THE AUSTRALIAN STANDARD REQUIREMENTS. HOWEVER, UNLESS SPECIFICALLY REQUIRED BY COUNCILS POLICY OR IF THE SITE CONSISTS OF A CLAY OR ROCK SUBGRADE, ALL OTHER DRAINAGE PITS WILL NOT REQUIRE A SUMP.
- E6. ALL STORMWATER PITS TO BE LOCATED AT LOW POINTS TO PREVENT PONDED WATER.
- E7. FOR STORMWATER PITS LOCATED BELOW THE WATER TABLE, CUT INTO ROCK OR IN POORLY DRAINED SOILS, THE PIT SUMP MAY BE FILLED WITH MORTAR AND SCREEDED TOWARDS THE OUTLET AT MINIMUM 1% FALL, SUBJECT TO THE ENGINEERS APPROVAL.

SUBSOIL DRAINAGE:

- F1. ALL SUBSOIL DRAINAGE TO BE INSTALLED AS REQUIRED IN ACCORDANCE WITH AS3500.3 (SPECIFICALLY SECTION 6, 7 AND APPENDIX M) AND THE NCC.
- F2. INSTALLATION OF SUBSOIL DRAINAGE LINES IS GENERALLY REQUIRED WHERE SUBSURFACE WATER MOVEMENT COULD DAMAGE BUILDINGS OR CAUSE LOSS OF AMENITY THROUGH THE BUILD-UP OF EXCESSIVE MOISTURE OR LATERAL WATER PRESSURE. THIS INCLUDES ALONG WALLS THAT IMPEDE THE NATURAL FLOW OF GROUNDWATER, ON THE UPHILL SIDE OF CUT AND FILL SITES, ADJACENT TO DEEP FOOTINGS, BEHIND RETAINING WALLS AND ADJACENT TO BASEMENT WALLS. SUBSOIL DRAINAGE IS GENERALLY ALSO REQUIRED IN SHALLOW LANDSCAPED AREAS OVER ROCK OR POORLY DRAINED SOILS TO PREVENT OVERLY SATURATED LANDSCAPED AREAS.
- F3. THE INSTALLATION OF SUBSOIL DRAINAGE MAY REQUIRE TRENCHING THROUGH ROCK.
- F4. ALL SUBSOIL LINES ARE TO BE 100mm UPVC SLOTTED PIPE (UNSOCKED), LAID AT (MIN.) 0.5% FALL UNO.
- F5. THE SUBSOIL LINE IS TO BE SURROUNDED BY SELECT FILTER MATERIAL, GENERALLY 10-20mm DIAMETER AGGREGATE.
- F6. THE TRENCH SHALL BE SIZED TO PROVIDE A MINIMUM 50mm BEDDING AND 100mm COVER ALL AROUND THE SUBSOIL LINE, GENERALLY MINIMUM 300mm WIDE X 300mm DEEP. THE TRENCH IS TO BE WRAPPED ALL-ROUND IN NON-WOVEN, GEOTEXTILE FABRIC OF STRENGTH CLASS A, WITH SUFFICIENT OVERLAP (LESSER OF TRENCH WIDTH OR 500mm).
- F7. WHERE THE IN-SITU SOILS HAVE A GRAIN SIZE SMALLER THAN THE GEOTEXTILE FABRIC, COURSE WASHED-SAND SHOULD BE USED AS A FILTER TO PREVENT BLOCKAGE OF THE GEOFABRIC.
- F8. THE BACKFILL LAYER OVER THE TRENCH SHALL BE NO-FINES COURSE WASHED-SAND. WHERE LANDSCAPED AREAS ARE PROPOSED OVER THE TRENCH, THE TOP 300mm OF BACKFILL MAY BE MIXED WITH UP TO 20% ORGANIC MATTER.
- F9. ALL SUBSOIL LINES ARE TO DISCHARGE INTO A GRATED PIT, AT A LEVEL MINIMUM 50mm ABOVE THE PIT OUTLET UNO. THE PROJECT BUILDER IS TO IMPLEMENT APPROPRIATE MEASURES TO PREVENT SUBSOIL LINE BLOCKAGE OR INFESTATION OF VERMIN.
- F10. THE HIGH-END OF THE SUBSOIL LINE IS TO BE TURNED UP AT 45° AND TERMINATE AT GROUND LEVEL WITH AN INSPECTION CAP TO ENABLE FUTURE FLUSH OUT AND MAINTENANCE.
- F11. 100mm Ø x 3000 LONG TAIL OUT SUBSOIL LINE TO BE PROVIDED ON THE UPSTREAM SIDE OF ALL LARGE PITS OR IN AREAS WITH HIGH SEEPAGE FLOWS. SUBSOIL LINE TO BE COVERED WITH GEOTEXTILE FILTER SOCK FOR THE FULL LENGTH AND END COVERED. BACKFILL MUST BE IN NO-FINES COARSE WASHED-SAND.
- CHARGED SYSTEM:**
- G1. ALL PIPEWORK IN A CHARGED SYSTEM TO BE 100mm Ø UPVC PRESSURE OR SEWER GRADE PIPES WITH ALL JOINTS PRESSURE SEALED TO A MINIMUM OF 1,000mm (UNLESS NOTED OTHERWISE) ABOVE THE INLET OF THE DISCHARGE POINT. ALL JOINTS TO BE SOLVENT WELDED IN ACCORDANCE WITH THE AUSTRALIAN STANDARDS.
- G2. ALL CHARGED SYSTEMS MUST HAVE A BLEED OUT LINE AT THE LOW POINT IN THE CHARGED SYSTEM WHICH MUST BE CONNECTED TO A FLUSH OUT PIT VIA GRAVITY. THE BLEED LINE MUST BE MAINTAINED AND REGULARLY FLUSHED OUT.

ON-SITE DETENTION NOTES:

- H1. ORIFICE PLATE MUST BE INSTALLED PRIOR TO INSTALLATION OF THE ROOF DRAINAGE SYSTEM AND CONNECTION OF THE SITE STORMWATER SYSTEM TO THE ON-SITE DETENTION TANK.
- H2. THE HEIGHT DIFFERENCE (H*) BETWEEN THE ORIFICE CENTRELINE AND THE TOP WATER LEVEL OF THE ON-SITE DETENTION TANK MUST BE CONSTRUCTED IN ACCORDANCE WITH THE STORMWATER MANAGEMENT PLAN. IF H* CHANGES DUE TO SITE CONDITIONS,THE ENGINEER MUST BE NOTIFIED FOR AN ORIFICE PLATE SIZE ADJUSTMENT.
- H3. ANY PIPE FITTINGS FOR BELOW GROUND ON-SITE DETENTION TANKS MUST BE INSTALLED IN ACCORDANCE WITH THE MANUFACTURERS SPECIFICATIONS.
- H4. ACCESS HATCHES MUST BE INSTALLED AT BOTH ENDS OF THE ON-SITE DETENTION TANK. IF THE DEPTH OF THE TANK IS GREATER THAN 1200mm, STEPS IRONS MUST BE INSTALLED IN ACCORDANCE WITH THE RELEVANT AUSTRALIAN STANDARDS.
- H5. ABOVE GROUND ON-SITE DETENTION BASINS MUST NOT EXCEED A PONDING DEPTH OF 300mm, UNLESS NOTED OTHERWISE. THE BUILDER MUST ENSURE THAT THE REQUIRED DETENTION VOLUME IS ACHIEVED DURING CONSTRUCTION. A WORK-AS-EXECUTED PLAN DETAILING THE FINISHED LEVELS AND VOLUME OF THE ON-SITE DETENTION BASIN MUST BE CARRIED OUT AT THE COMPLETION OF WORKS BY A REGISTERED SURVEYOR AND APPROVED BY THE ENGINEER PRIOR TO FINAL CERTIFICATION.

SURFACE DRAINAGE:

- J1. WHEN LAND FALLS TOWARDS A BUILDING, INCLUDING LAND UPSLOPE OF THE PROPERTY BOUNDARY, GROUND SURFACE LEVELS ADJACENT TO THE BUILDING ARE TO BE REGRADED SUCH THAT THE FIRST METRE HAS MINIMUM 50mm FALL AWAY FROM THE BUILDING, GENERALLY IN ACCORDANCE WITH THE NCC.

- J2. ANY NEW DEVELOPMENT WORKS MUST NOT CREATE ANY TRAPPED SURFACE AREAS. IN SUCH CASES WHERE TRAPPED AREAS EXIST, SHALE DRAINS OR GRATED PITS WITH PIPED OUTLETS OF ADEQUATE CAPACITY MAY BE REQUIRED TO ROUTE RUNOFF AROUND THE BUILDING TO AN APPROVED DISCHARGE POINT. IF THE TRAPPED AREA IS BELOW THE NATURAL SURFACE LEVEL, A PUMP OUT SYSTEM MAY BE REQUIRED. IN EITHER CASE, THE PROJECT ENGINEER MUST BE CONTACTED FOR DESIGN DETAILS (AS REQUIRED) PRIOR TO CONSTRUCTION.
- J3. BUILDER TO PROVIDE A MINIMUM 100mm WIDE x 30mm HIGH OR 50mm DIA OVERFLOW FOR EVERY 6m2 OF EXPOSED AREA THAT IS TRAPPED OR SURROUNDED BY HOBS/BALUSTRADES/WALLS/ETC. THE FULL OVERFLOW DEPTH MUST BE LOCATED BELOW ANY ADJACENT INTERNAL FLOOR LEVELS OR OPENINGS TO PROTECT AGAINST WATER INGRESS DUE TO BLOCKAGE OF THE PRIMARY OUTLET(S).

NOTES:

1. THIS DRAWING IS NOT TO BE USED FOR CONSTRUCTION IF THE ISSUE DATE PRECEDES THE ISSUE DATE ON THE ARCHITECTURAL DRAWINGS.
2. DO NOT SCALE FROM THIS DRAWING.
3. ALL DIMENSIONS ARE TO BE VERIFIED ON SITE BY THE BUILDER BEFORE COMMENCING WITH ASSOCIATED WORK.
4. FOR GENERAL NOTES REFER TO DRAWING NUMBER: S01.

DIAL BEFORE YOU DIG NOTE:

NO INVESTIGATION OF UNDERGROUND SERVICES HAS BEEN MADE. ALL RELEVANT AUTHORITIES SHOULD BE NOTIFIED PRIOR TO ANY EXCAVATION ON OR NEAR THE SITE DEVELOPERS & EXCAVATORS MAY BE HELD FINANCIALLY RESPONSIBLE BY THE ASSET OWNER SHOULD THEY DAMAGE UNDERGROUND NETWORKS.

CARELESS DIGGING CAN:

- CAUSE DEATH OR SERIOUS INJURY TO WORKERS AND THE GENERAL PUBLIC
- INCONVENIENCE USERS OF ELECTRICITY, GAS, WATER AND COMMUNICATIONS
- LEAD TO CRIMINAL PROSECUTION AND DAMAGES CLAIMS
- CAUSE EXPENSIVE FINANCIAL LOSSES TO BUSINESS
- CUT OFF EMERGENCY SERVICES
- DELAY PROJECT COMPLETION TIMES WHILE THE DAMAGE IS REPAIRED



MINIMISE YOUR RISK
AND DIAL BEFORE YOU
DIG. - TEL. 1100

NORTHERN BEACHES COUNCIL (PITTWATER AREA) ON-SITE DETENTION SYSTEM CALCULATION SHEET	
ADDRESS: 110 WALLUMATTA ROAD, NEWPORT	
ALL WORKS IN GENERAL ACCORDANCE WITH WATER MANAGEMENT FOR DEVELOPMENT POLICY	
DEVELOPMENT TYPE:	ALTERATION AND ADDITIONS
REGION:	1 (NORTHERN)
SITE DETAILS	
TOTAL SITE AREA	948.6 m ² (BY CALC)
PRE-DEVELOPMENT IMPERVIOUS AREA	242.5 m ² (26% IMPERVIOUS)
POST-DEVELOPMENT IMPERVIOUS AREA	283.2 m ² (30% IMPERVIOUS)
INCREASE	40.7 m ²
OSD REQUIREMENTS	
THIS IS AN ALTERATIONS AND ADDITIONS DEVELOPMENT WITH AN INCREASE IN IMPERVIOUS AREA OF LESS THAN 50 m ² , THEREFORE OSD IS NOT REQUIRED.	
SITE STORAGE REQUIREMENT	
RAINWATER 'BASIX' REQUIRED	NIL
OUTLET CONTROL	
METHOD OF DISCHARGE	EXISTING DISCHARGE TO COUNCIL DRAINAGE SYSTEM

DRAWING SCHEDULE:

- D01 - STORMWATER DRAINAGE GENERAL NOTES
- D02 - SITE STORMWATER DRAINAGE PLAN
- D03 - FIRST FLOOR & ROOF STORMWATER DRAINAGE PLAN
- D04 - STORMWATER DRAINAGE DETAILS SHEET 1
- D05 - SEDIMENT AND EROSION CONTROL PLAN
- D06 - SEDIMENT AND EROSION DETAILS SHEET 1

ISSUED FOR D.A.
SUBMISSION ONLY
NOT FOR
CONSTRUCTION

IF IN DOUBT ASK

Scale check - 100mm when printed to scale

A1

--	--	--	--	--	--	--	--	--	--	--	--	--	--	--	--	--	--	--	--	--	--	--	--	--	--	--	--	--	--	--	--	--	--	--	--	--	--	--	--	--	--	--	--	--	--	--	--	--	--	--	--	--	--	--	--	--	--	--	--	--	--	--	--	--	--	--	--	--	--	--	--	--	--	--	--	--	--	--	--	--	--	--	--	--	--	--	--	--	--	--	--	--	--	--	--	--	--	--	--	--	--	--	--	--	--	--	--	--	--	--	--	--	--	--	--	--	--	--	--	--	--	--	--	--	--	--	--	--	--	--	--	--	--	--	--	--	--	--	--	--	--	--	--	--	--	--	--	--	--	--	--	--	--	--	--	--	--	--	--	--	--	--	--	--	--	--	--	--	--	--	--	--	--	--	--	--	--	--	--	--	--	--	--	--	--	--	--	--	--	--	--	--	--	--	--	--	--	--	--	--	--	--	--	--	--	--	--	--	--	--	--	--	--	--	--	--	--	--	--	--	--	--	--	--	--	--	--	--	--	--	--	--	--	--	--	--	--	--	--	--	--	--	--	--	--	--	--	--	--	--	--	--	--	--	--	--	--	--	--	--	--	--	--	--	--	--	--	--	--	--	--	--	--	--	--	--	--	--	--	--	--	--	--	--	--	--	--	--	--	--	--	--	--	--	--	--	--	--	--	--	--	--	--	--	--	--	--	--	--	--	--	--	--	--	--	--	--	--	--	--	--	--	--	--	--	--	--	--	--	--	--	--	--	--	--	--	--	--	--	--	--	--	--	--	--	--	--	--	--	--	--	--	--	--	--	--	--	--	--	--	--	--	--	--	--	--	--	--	--	--	--	--	--	--	--	--	--	--	--	--	--	--	--	--	--	--	--	--	--	--	--	--	--	--	--	--	--	--	--	--	--	--	--	--	--	--	--	--	--	--	--	--	--	--	--	--	--	--	--	--	--	--	--	--	--	--	--	--	--	--	--	--	--	--	--	--	--	--	--	--	--	--	--	--	--	--	--	--	--	--	--	--	--	--	--	--	--	--	--	--	--	--	--	--	--	--	--	--	--	--	--	--	--	--	--	--	--	--	--	--	--	--	--	--	--	--	--	--	--	--	--	--	--	--	--	--	--	--	--	--	--	--	--	--	--	--	--	--	--	--	--	--	--	--	--	--	--	--	--	--	--	--	--	--	--	--	--	--	--	--	--	--	--	--	--	--	--	--	--	--	--	--	--	--	--	--	--	--	--	--	--	--	--	--	--	--	--	--	--	--	--	--	--	--	--	--	--	--	--	--	--	--	--	--	--	--	--	--	--	--	--	--	--	--	--	--	--	--	--	--	--	--	--	--	--	--	--	--	--	--	--	--	--	--	--	--	--	--	--	--	--	--	--	--	--	--	--	--	--	--	--	--	--	--	--	--	--	--	--	--	--	--	--	--	--	--	--	--	--	--	--	--	--	--	--	--	--	--	--	--	--	--	--	--	--	--	--	--	--	--	--	--	--	--	--	--	--	--	--	--	--	--	--	--	--	--	--	--	--	--	--	--	--	--	--	--	--	--	--	--	--	--	--	--	--	--	--	--	--	--	--	--	--	--	--	--	--	--	--	--	--	--	--	--	--	--	--	--	--	--	--	--	--	--	--	--	--	--	--	--	--	--	--	--	--	--	--	--	--	--	--	--	--	--	--	--	--	--	--	--	--	--	--	--	--	--	--	--	--	--	--	--	--	--	--	--	--	--	--	--	--	--	--	--	--	--	--	--	--	--	--	--	--	--	--	--	--	--	--	--	--	--	--	--	--	--	--	--	--	--	--	--	--	--	--	--	--	--	--	--	--	--	--	--	--	--	--	--	--	--	--	--	--	--	--	--	--	--	--	--	--	--	--	--	--	--	--	--	--	--	--	--	--	--	--	--	--	--	--	--	--	--	--	--	--	--	--	--	--	--	--	--	--	--	--	--	--	--	--	--	--	--	--	--	--	--	--	--	--	--	--	--	--	--	--	--	--	--	--	--	--	--	--	--	--	--	--	--	--	--	--	--	--	--	--	--	--	--	--	--	--	--	--	--	--	--	--	--	--	--	--	--	--	--	--	--	--	--	--	--	--	--	--	--	--	--	--	--	--	--	--	--	--	--	--	--	--	--	--	--	--	--	--	--	--	--	--	--	--	--	--	--	--	--	--	--	--	--	--	--	--	--	--	--	--	--	--	--	--	--	--	--	--	--	--	--	--	--	--	--	--	--	--	--	--	--	--	--	--	--	--	--	--	--	--	--	--	--	--	--	--	--	--	--	--	--	--	--	--	--	--	--	--	--	--	--	--	--	--	--	--	--	--	--	--	--	--	--	--	--	--	--	--	--	--	--	--	--	--	--	--	--	--	--	--	--	--	--	--	--	--	--	--	--	--	--	--	--	--	--	--	--	--	--	--	--	--	--	--	--	--	--	--	--	--	--	--	--	--	--	--	--	--	--	--	--	--	--	--	--	--	--	--	--	--	--	--	--	--	--	--	--	--	--	--	--	--	--	--	--	--	--	--	--	--	--	--	--	--	--	--	--	--	--	--	--	--	--	--	--	--	--	--	--	--	--	--	--	--	--	--	--	--	--	--	--	--	--	--	--	--	--	--	--	--	--	--	--	--	--	--	--	--	--	--	--	--	--	--	--	--	--	--	--	--	--	--	--	--	--	--	--	--	--	--	--	--	--	--	--	--	--	--	--	--	--	--	--	--	--	--	--	--	--	--	--	--	--	--	--	--	--	--	--	--	--	--	--	--	--	--	--	--	--	--	--	--	--	--	--	--	--	--	--	--	--	--	--	--	--	--	--	--	--	--	--	--	--	--	--	--	--	--	--	--	--	--	--	--	--	--	--	--	--	--	--	--	--	--	--	--	--	--	--	--	--	--	--	--	--	--	--	--	--	--	--	--	--	--	--	--	--	--	--	--	--	--	--	--	--	--	--	--	--	--	--	--	--	--	--	--	--	--	--	--	--	--	--	--	--	--	--	--	--	--	--	--	--	--	--	--	--	--	--	--	--	--	--	--	--	--	--	--	--	--	--	--	--	--	--	--	--	--	--	--	--	--	--	--	--	--	--	--	--	--	--	--	--	--	--	--	--	--	--	--	--	--	--	--	--	--	--	--	--	--	--	--	--	--	--	--	--	--	--	--	--	--	--	--	--	--	--	--	--	--	--	--	--	--	--	--	--	--	--	--	--	--	--	--	--	--	--	--	--	--	--	--	--	--	--	--	--	--	--	--	--	--	--	--	--	--	--	--	--	--	--	--	--	--	--	--	--	--	--	--	--	--	--	--	--	--	--	--	--	--	--	--	--	--	--	--	--	--	--	--	--	--	--	--	--	--	--	--	--	--

Date : 4 May '22

Michael Wachjo

B.E.(Civil), MIEAust.

(Director NB Consulting Engineers)

The copyright of this drawing remains with NB Consulting Engineers

NB Consulting Engineers

STRUCTURAL - CIVIL - STORMWATER - REMEDIAL

A.C.N. 076 121 616 A.B.N. 24 076 121 616

Sydney: Ph: (02) 9984 7000

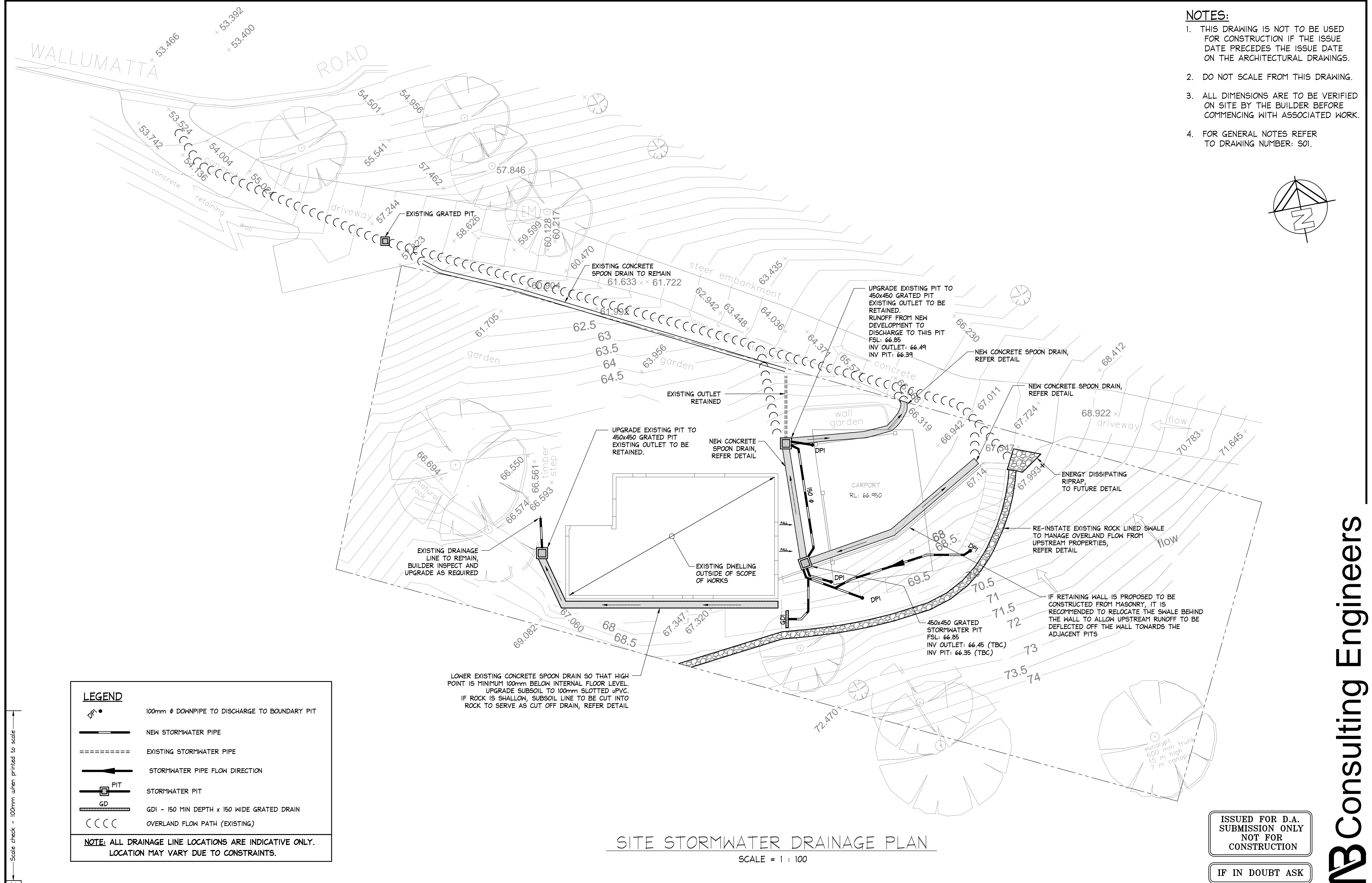
Suite 207, 30 Fisher Road Dee Why N.S.W. 2099

Gold Coast: Ph: (07) 5631 4744

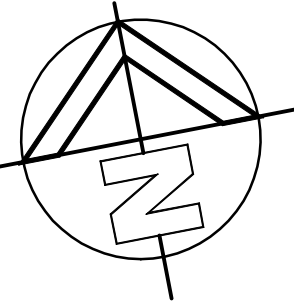
Suite 1, 30B Griffith Street, Coolangatta QLD 4225

E : nb@nbconsulting.com.au W : www.nbconsulting.com.au

NB Consulting Engineers



- NOTES:**
1. THIS DRAWING IS NOT TO BE USED FOR CONSTRUCTION IF THE ISSUE DATE PRECEDES THE ISSUE DATE ON THE ARCHITECTURAL DRAWINGS.
 2. DO NOT SCALE FROM THIS DRAWING.
 3. ALL DIMENSIONS ARE TO BE VERIFIED ON SITE BY THE BUILDER BEFORE COMMENCING WITH ASSOCIATED WORK.
 4. FOR GENERAL NOTES REFER TO DRAWING NUMBER: S01.



LEGEND

- 100mm ϕ DOWNPIPE TO DISCHARGE TO BOUNDARY PIT
- NEW STORMWATER PIPE
- EXISTING STORMWATER PIPE
- STORMWATER PIPE FLOW DIRECTION
- STORMWATER PIT
- GDI - 150 MIN DEPTH x 150 WIDE GRATED DRAIN
- OVERLAND FLOW PATH (EXISTING)

NOTE: ALL DRAINAGE LINE LOCATIONS ARE INDICATIVE ONLY. LOCATION MAY VARY DUE TO CONSTRAINTS.

SITE STORMWATER DRAINAGE PLAN

SCALE = 1 : 100

ISSUED FOR D.A. SUBMISSION ONLY
NOT FOR CONSTRUCTION

IF IN DOUBT ASK

DOCUMENT CERTIFICATION				NB Consulting Engineers		Architect:	Project:	Date:	Design:	Drawn:
Date : 4 May '22 Michael Wachjo B.E.(Civil), MIEAust. (Director NB Consulting Engineers)				STRUCTURAL - CIVIL - STORMWATER - REMEDIAL A.C.N. 076 121 616 A.B.N. 24 076 121 616		THW ARCHITECTS	ALTERATIONS AND ADDITIONS 110 WALLUMATTA ROAD, NEWPORT	MAY '22	SR	NB
The copyright of this drawing remains with NB Consulting Engineers				Sydney: Ph: (02) 9984 7000 Suite 207, 30 Fisher Road Dee Why N.S.W. 2099 Gold Coast: Ph: (07) 5631 4744 Suite 1, 30B Griffith Street, Coolangatta QLD 4225 E : nb@nbconsulting.com.au W : www.nbconsulting.com.au		TERRY-LYN STEVENS & ANDREW MATTHEWS	Drawing Title: SITE STORMWATER DRAINAGE PLAN	Job No: 190701	Drawing No: D02	Issue: C
04/05/2022	C	ADDED SEDIMENT AND EROSION CONTROL PLAN	NB							
29/04/2022	B	REVISED FOR DA SUBMISSION	NB	CJ						
27/04/2022	A	ISSUED FOR DA SUBMISSION	NB	CJ						
Date:	Issue:	Description:	By:	Review:						

NB Consulting Engineers

Scale check - 100mm when printed to scale

AI

04/05/2022	C	ADDED SEDIMENT AND EROSION CONTROL PLAN	NB		
29/04/2022	B	REVISED FOR DA SUBMISSION	NB	CJ	
27/04/2022	A	ISSUED FOR DA SUBMISSION	NB	CJ	
Date:	Issue:	Description:	By:	Review:	

DOCUMENT CERTIFICATION
Date : 4 May '22
Michael Wachjo
B.E.(Civil), MIEAust.
(Director NB Consulting Engineers)
The copyright of this drawing remains with NB Consulting Engineers

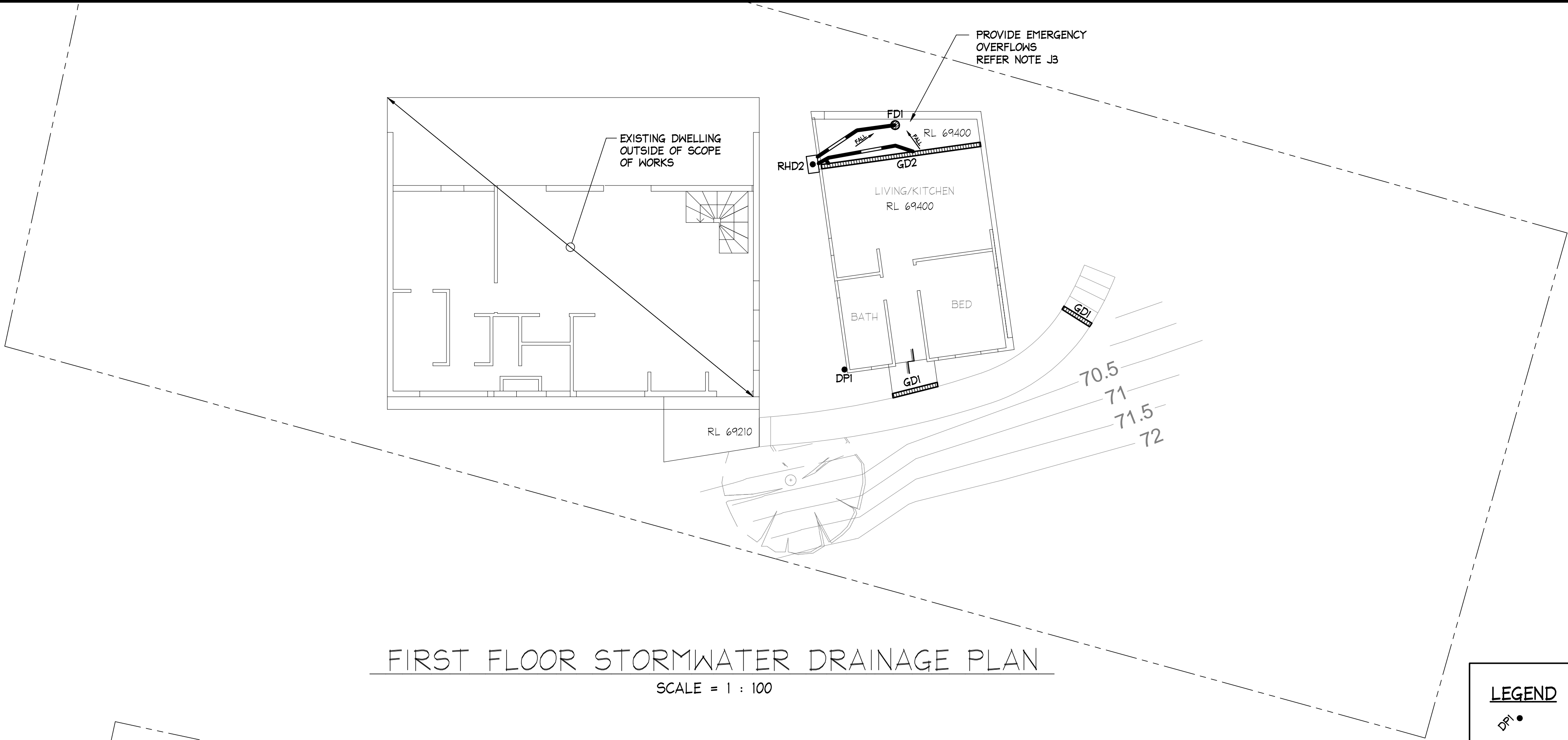
NB Consulting Engineers
STRUCTURAL - CIVIL - STORMWATER - REMEDIAL
A.C.N. 076 121 616 A.B.N. 24 076 121 616

Sydney: Ph: (02) 9984 7000
Suite 207, 30 Fisher Road Dee Why N.S.W. 2099
Gold Coast: Ph: (07) 5631 4744
Suite 1, 30B Griffith Street, Coolangatta QLD 4225
E : nb@nbconsulting.com.au W : www.nbconsulting.com.au

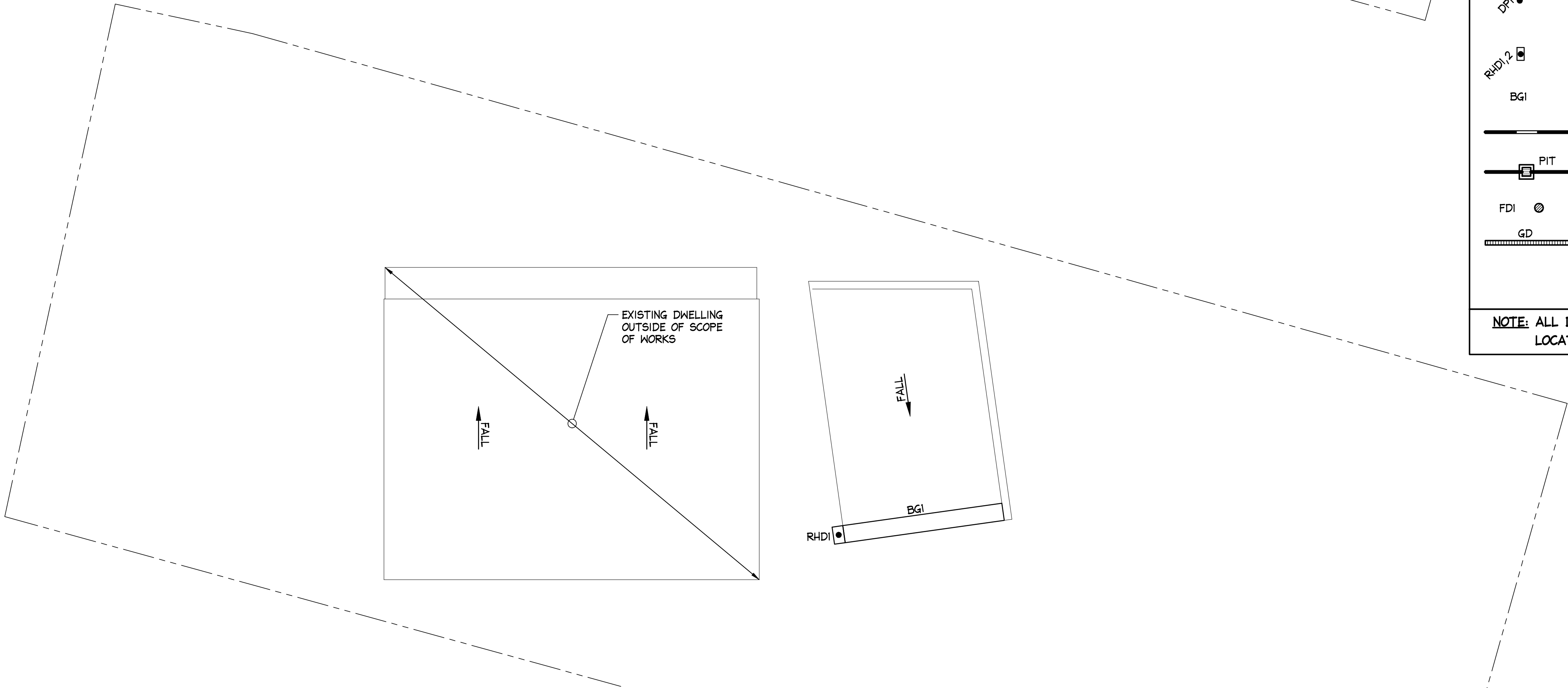
Architect:	THW ARCHITECTS
Client:	TERRY-LYN STEVENS & ANDREW MATTHEWS

Project:	ALTERATIONS AND ADDITIONS 110 WALLUMATTA ROAD, NEWPORT
Drawing Title:	FIRST FLOOR AND ROOF STORMWATER DRAINAGE PLAN

Date:	Design:	Drawn:
MAY '22	SR	NB
Job No:	Drawing No:	Issue:
190701	D03	C

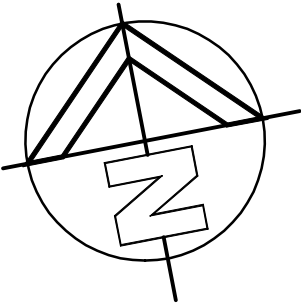


FIRST FLOOR STORMWATER DRAINAGE PLAN
SCALE = 1 : 100



ROOF STORMWATER DRAINAGE PLAN
SCALE = 1 : 100

- NOTES:**
1. THIS DRAWING IS NOT TO BE USED FOR CONSTRUCTION IF THE ISSUE DATE PRECEDES THE ISSUE DATE ON THE ARCHITECTURAL DRAWINGS.
 2. DO NOT SCALE FROM THIS DRAWING.
 3. ALL DIMENSIONS ARE TO BE VERIFIED ON SITE BY THE BUILDER BEFORE COMMENCING WITH ASSOCIATED WORK.
 4. FOR GENERAL NOTES REFER TO DRAWING NUMBER: S01.



LEGEND

100mm ϕ DOWNPIPE TO DISCHARGE TO BOUNDARY PIT

RAINHEAD WITH 100mm ϕ DOWNPIPE
REFER TO DETAIL

BOX GUTTER, REFER TO DETAILS

NEW STORMWATER PIPE

STORMWATER PIT

FLOOR DRAIN, REFER TO DETAILS

GDI - 150 MIN DEPTH x 150 WIDE GRATED DRAIN

GD2 - STORMTECH PSTD'S THRESHOLD DRAIN
OR APPROVED EQUIVALENT

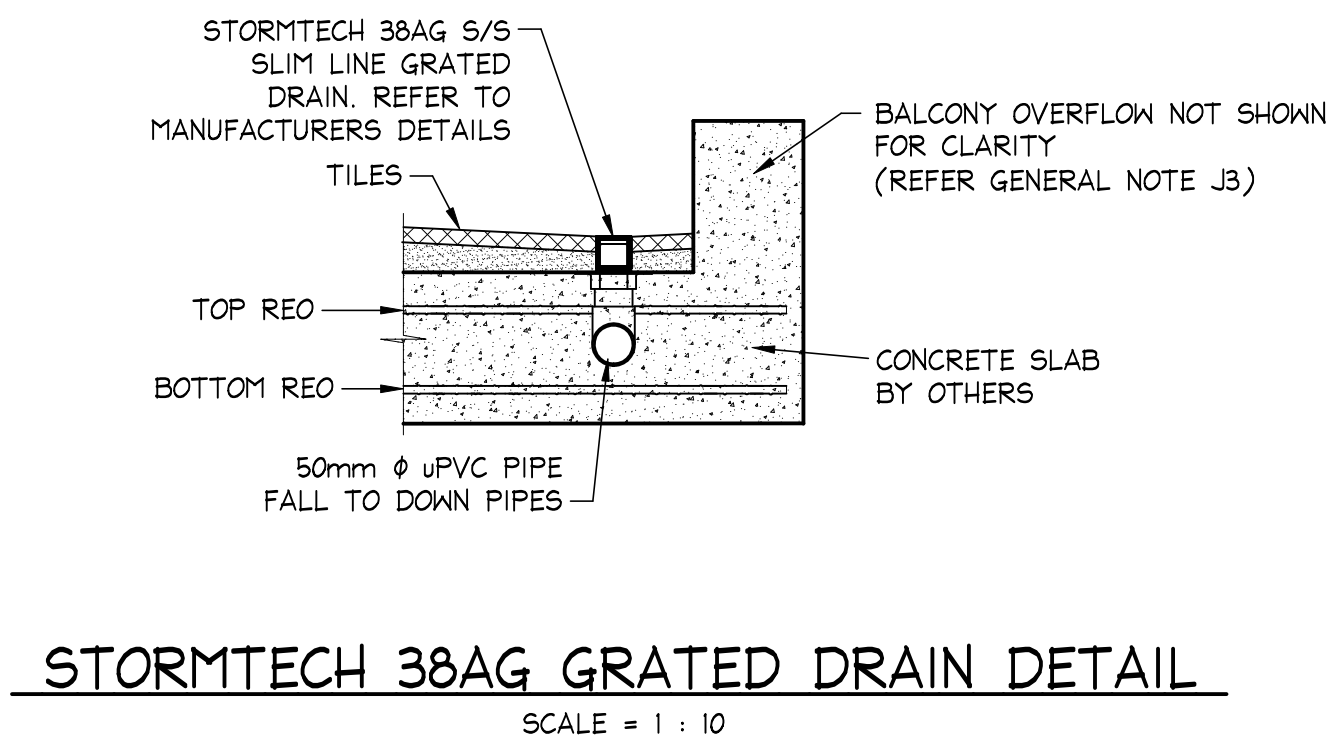
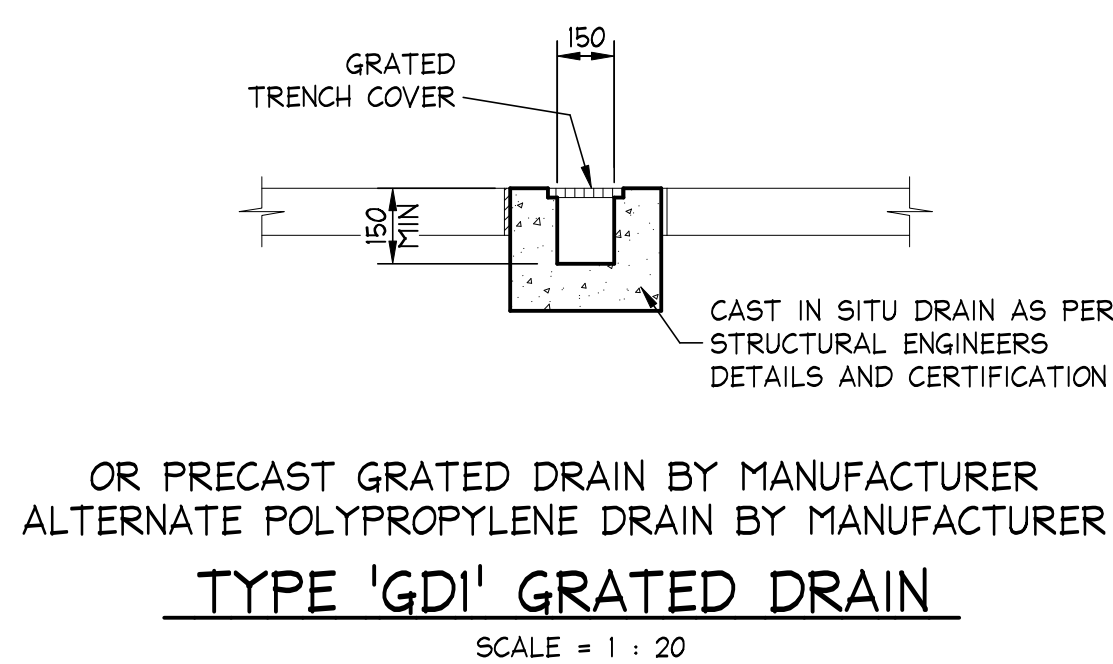
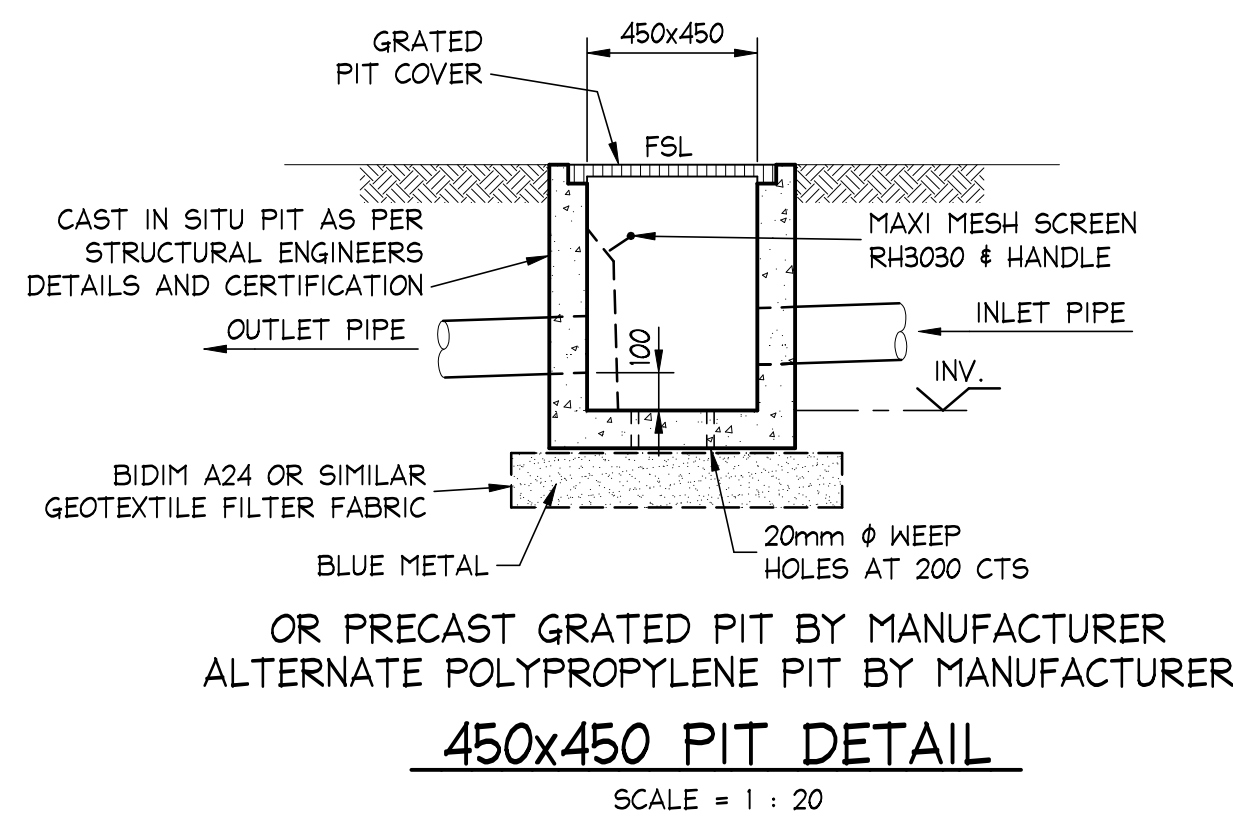
NOTE:

ALL DRAINAGE LINE LOCATIONS ARE INDICATIVE ONLY.
LOCATION MAY VARY DUE TO CONSTRAINTS.

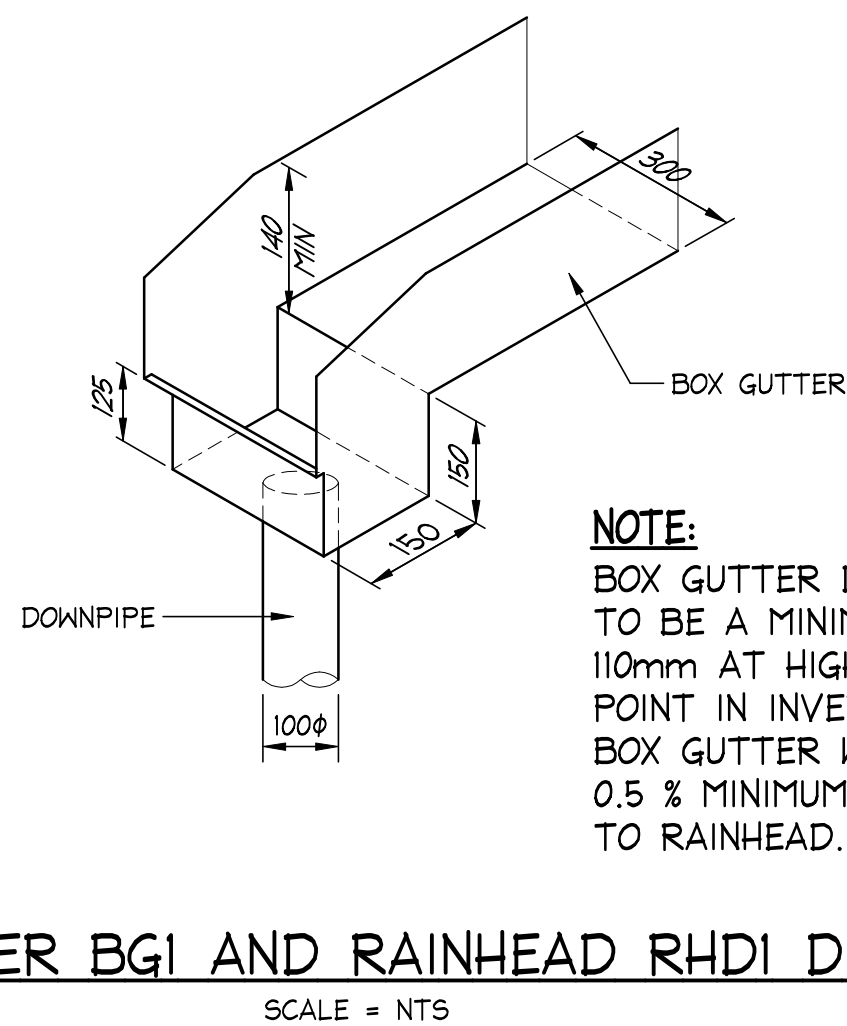
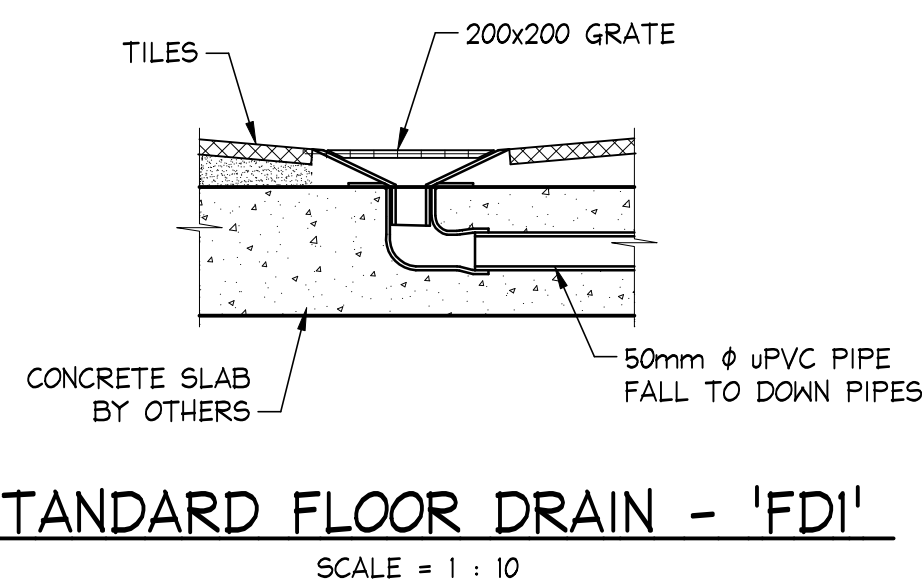
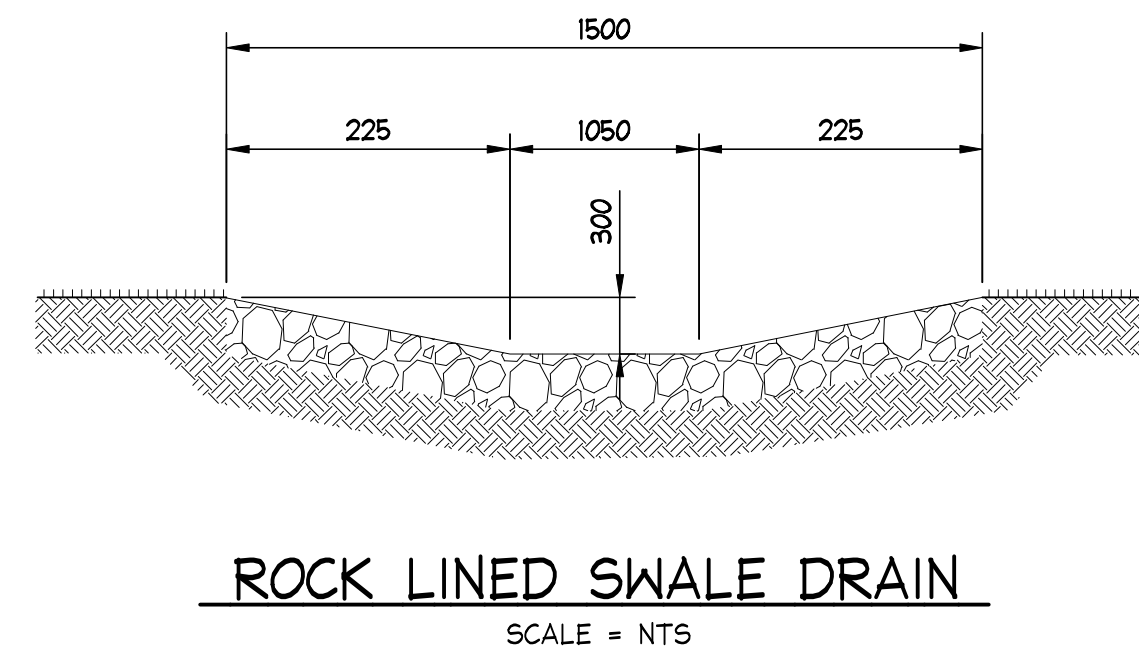
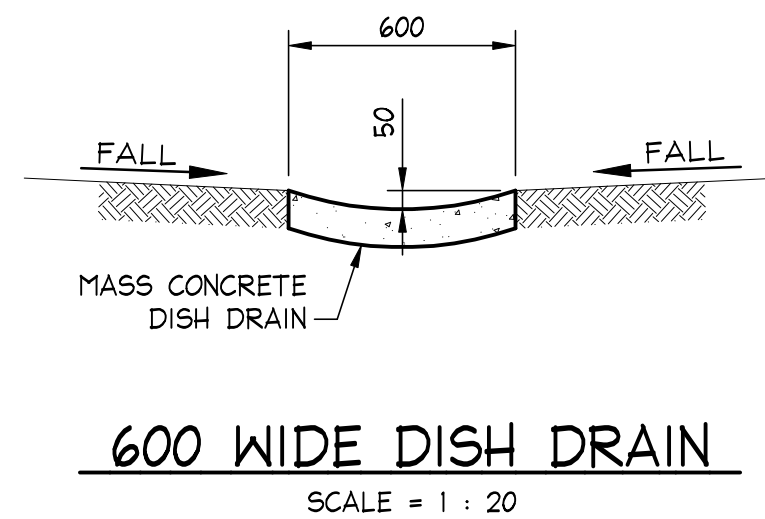
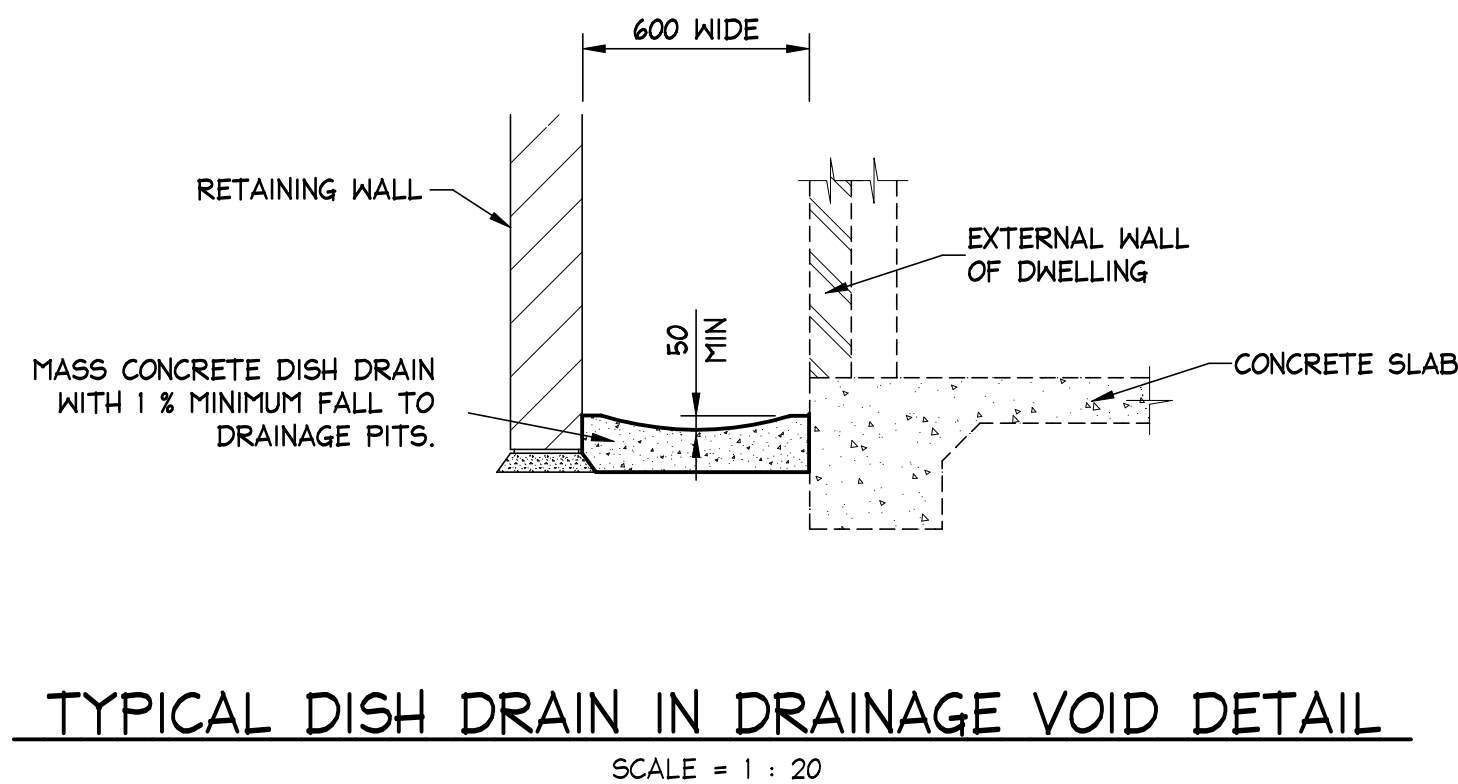
ISSUED FOR D.A.
SUBMISSION ONLY
NOT FOR
CONSTRUCTION

IF IN DOUBT ASK

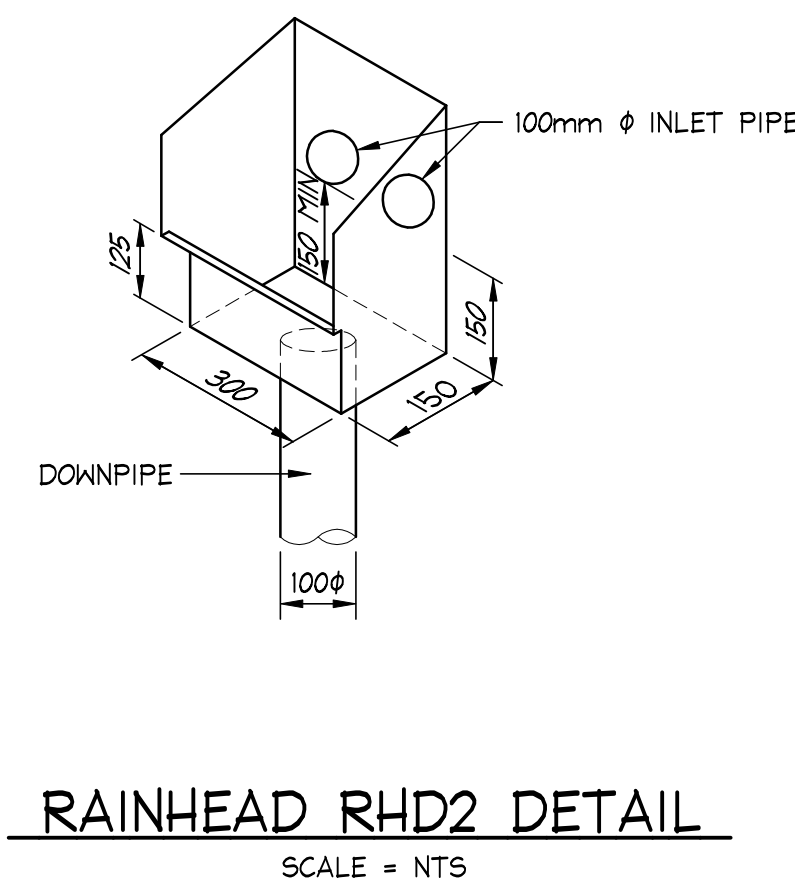
NB Consulting Engineers



- NOTES:**
1. THIS DRAWING IS NOT TO BE USED FOR CONSTRUCTION IF THE ISSUE DATE PRECEDES THE ISSUE DATE ON THE ARCHITECTURAL DRAWINGS.
 2. DO NOT SCALE FROM THIS DRAWING.
 3. ALL DIMENSIONS ARE TO BE VERIFIED ON SITE BY THE BUILDER BEFORE COMMENCING WITH ASSOCIATED WORK.
 4. FOR GENERAL NOTES REFER TO DRAWING NUMBER: S01.



NOTE:
BOX GUTTER DEPTH TO BE A MINIMUM OF 110mm AT HIGHEST POINT IN INVERT OF BOX GUTTER WITH 0.5 % MINIMUM FALL TO RAINHEAD.



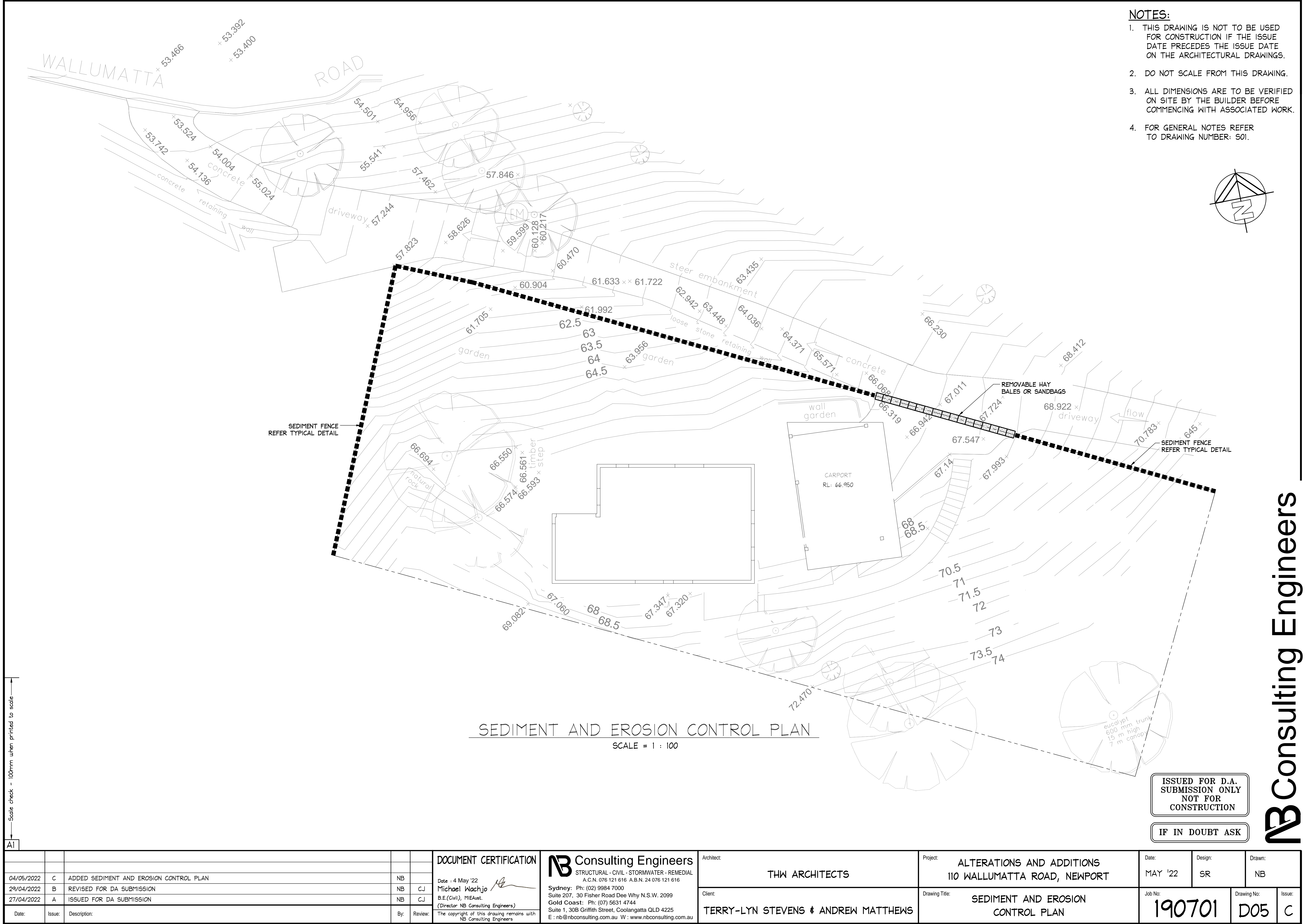
ISSUED FOR D.A.
SUBMISSION ONLY
NOT FOR
CONSTRUCTION

IF IN DOUBT ASK

Scale check - 100mm when printed to scale

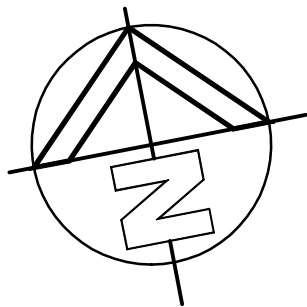
A1												DOCUMENT CERTIFICATION		<div><div>NB</div><div>Consulting Engineers</div><div>STRUCTURAL - CIVIL - STORMWATER - REMEDIAL A.C.N. 076 121 616 A.B.N. 24 076 121 616</div><div>Sydney: Ph: (02) 9984 7000 Suite 207, 30 Fisher Road Dee Why N.S.W. 2099 Gold Coast: Ph: (07) 5631 4744 Suite 1, 30B Griffith Street, Coolangatta QLD 4225 E : nb@nbconsulting.com.au W : www.nbconsulting.com.au</div></div>		Architect: THW ARCHITECTS		Project: ALTERATIONS AND ADDITIONS 110 WALLUMATTA ROAD, NEWPORT		Date: MAY '22	Design: SR	Drawn: NB
04/05/2022		C	ADDED SEDIMENT AND EROSION CONTROL PLAN							NB	Date : 4 May '22 Michael Wachjo B.E.(Civil), MIEAust. (Director NB Consulting Engineers)		Client: TERRY-LYN STEVENS & ANDREW MATTHEWS		Drawing Title: STORMWATER DRAINAGE DETAILS SHEET 1		Job No: 190701	Drawing No: D04	Issue: C			
29/04/2022		B	REVISED FOR DA SUBMISSION							NB	CJ											
27/04/2022		A	ISSUED FOR DA SUBMISSION							NB	CJ											
Date:		Issue:	Description:							By:	Review:	The copyright of this drawing remains with NB Consulting Engineers										

NB Consulting Engineers



NOTES:

1. THIS DRAWING IS NOT TO BE USED FOR CONSTRUCTION IF THE ISSUE DATE PRECEDES THE ISSUE DATE ON THE ARCHITECTURAL DRAWINGS.
2. DO NOT SCALE FROM THIS DRAWING.
3. ALL DIMENSIONS ARE TO BE VERIFIED ON SITE BY THE BUILDER BEFORE COMMENCING WITH ASSOCIATED WORK.
4. FOR GENERAL NOTES REFER TO DRAWING NUMBER: S01.



SEDIMENT AND EROSION CONTROL PLAN

SCALE = 1 : 100

ISSUED FOR D.A.
SUBMISSION ONLY
NOT FOR
CONSTRUCTION

IF IN DOUBT ASK

			DOCUMENT CERTIFICATION			NB Consulting Engineers			Architect:			Project:			Date:			Design:			Drawn:		
04/05/2022			C			NB			THW ARCHITECTS			ALTERATIONS AND ADDITIONS 110 WALLUMATTA ROAD, NEWPORT			MAY '22			SR			NB		
29/04/2022			B			NB																	
27/04/2022			A			NB																	
Date:			Issue:			By:			TERRY-LYN STEVENS & ANDREW MATTHEWS			Drawing Title:			Job No:			190701			Drawing No:		
			Description:			Review:						SEDIMENT AND EROSION CONTROL PLAN						D05			Issue:		
																					C		

DOCUMENT CERTIFICATION

Date : 4 May '22
Michael Wachjo
B.E.(Civil), MIEAust.
(Director NB Consulting Engineers)

The copyright of this drawing remains with
NB Consulting Engineers

NB Consulting Engineers
STRUCTURAL - CIVIL - STORMWATER - REMEDIAL
A.C.N. 076 121 616 A.B.N. 24 076 121 616

Sydney: Ph: (02) 9984 7000
Suite 207, 30 Fisher Road Dee Why N.S.W. 2099
Gold Coast: Ph: (07) 5631 4744
Suite 1, 30B Griffith Street, Coolangatta QLD 4225
E : nb@nbconsulting.com.au W : www.nbconsulting.com.au

Architect:

THW ARCHITECTS

Client:

TERRY-LYN STEVENS & ANDREW MATTHEWS

Project:

ALTERATIONS AND ADDITIONS
110 WALLUMATTA ROAD, NEWPORT

Drawing Title:

SEDIMENT AND EROSION
CONTROL PLAN

Date:

MAY '22

Design:

SR

Drawn:

NB

Job No:

190701

Drawing No:

D05

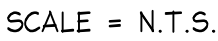
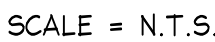
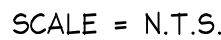
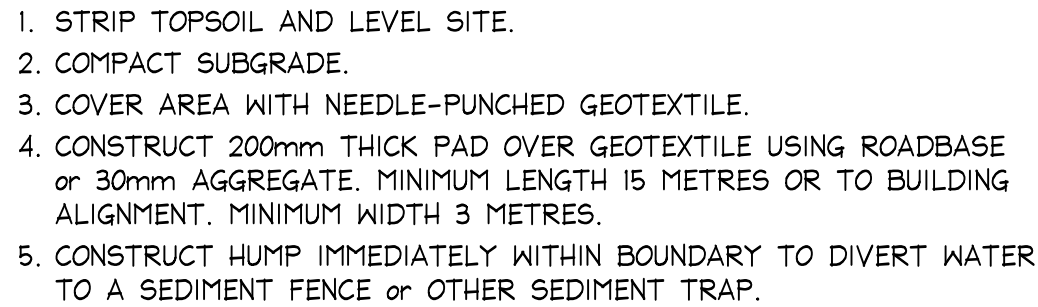
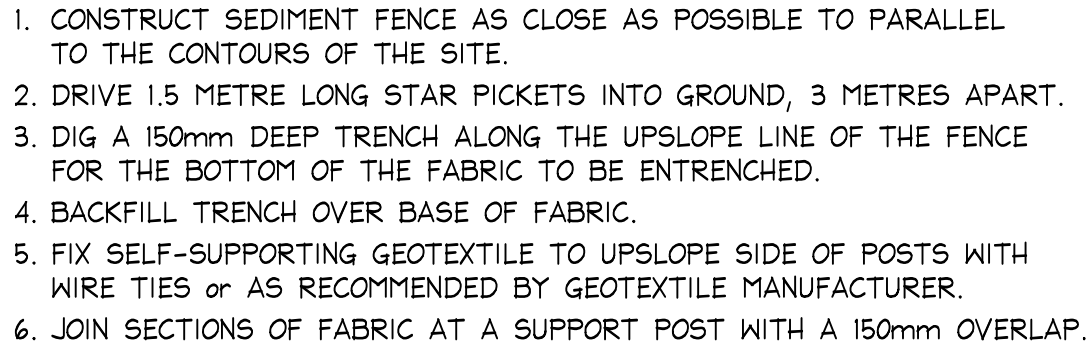
Issue:

C

NB Consulting Engineers

1. THIS DRAWING IS NOT TO BE USED FOR CONSTRUCTION IF THE ISSUE DATE PRECEDES THE ISSUE DATE ON THE ARCHITECTURAL DRAWINGS.
2. DO NOT SCALE FROM THIS DRAWING
3. ALL DIMENSIONS ARE TO BE VERIFIED ON SITE BY THE BUILDER BEFORE COMMENCING WITH ASSOCIATED WORK
4. FOR GENERAL NOTES REFER TO DRAWING NUMBER: 501.

1. CONSTRUCTION VEHICLES ARE TO LEAVE AND ENTER THE SITE OVER AN ALL WEATHER SURFACE CONSISTING OF COURSE CRUSHED STONE OR BLUE METAL CONSTRUCTED WITHIN THE FRONT SETBACK AREA OPPOSITE THE EXISTING FOOTPATH CROSSING UNLESS NOTED OTHERWISE.
2. EXCAVATION MACHINERY ARE TO BE UNLOADED AND LOADED UPON THIS ALL WEATHER SURFACE. CONCRETE PUMPS AND TRUCKS WILL ALSO UTILISE THE ALL WEATHER SURFACE FOR THEIR OPERATIONS.
3. MATERIALS WILL BE UNLOADED UPON THE ALL WEATHER SURFACE WITHIN THE FRONT SETBACK AREA BY MEANS OF CRANES MOUNTED ON THE BACK OF DELIVERY TRUCKS OR UNLOADED BY HAND. IT IS NOT ENVISAGED THAT A MOBILE CRANE WILL BE REQUIRED DURING THE CONSTRUCTION PROCESS.
4. SOME STOCKPILING OF TOPSOIL REMOVED FROM THE BUILDING AREA MAY BE STORED ON THE SITE DURING THE CONSTRUCTION WITHIN THE PROPERTY IN AN AREA ENCLOSED WITHIN THE SEDIMENT CONTROL FENCING.
5. ALL EXCAVATED + CONSTRUCTION MATERIALS, SHED, SKIP BINS, TEMPORARY WATER CLOSETS, SPOIL AND EQUIPMENT, ETC SHALL BE KEPT WITHIN THE PROPERTY. NO VEHICLES OR MACHINES SHALL BE KEPT WITHIN THE PROPERTY. NO VEHICLES OR MACHINES SHALL STAND ON COUNCIL FOOTPATHS FOR LARGE LENGTHS OF TIME.
6. ALL RUBBISH + RECYCLABLE MATERIAL SHALL BE STOCKPILED IN WASTE BINS IN THE AREA NOMINATED ON THE SITE PLAN WITHIN THE SITE BOUNDARY. PUBLIC PROPERTY SHALL BE KEPT FREE OF RUBBISH AND RECYCLABLES AT ALL TIMES ANY WASTE MATERIALS SHALL BE REGULARLY COLLECTED FROM THE SITE AND DISPOSED OF IN AN APPROPRIATE FASHION.
7. ANY BUILDING + DEMOLITION WORKS INVOLVING ASBESTOS SHALL BE CARRIED OUT IN ACCORDANCE WITH THE RELEVANT STANDARDS.
8. VEHICLES LEAVING THE SITE WILL DO SO VIA THE ALL WEATHER BALLAST DRIVEWAY MADE OF COURSE CRUSHED STONE OR BLUE METAL LOCATED WITHIN THE FRONT SETBACK AREA OF THE DEVELOPMENT. ANY DIRT OR MATERIAL DEPOSITED ON THE ROAD RESERVE OR ROADWAY IS TO BE PROMPTLY CLEANED.
9. ANY EXCAVATED AREA REQUIRED SUPPORT WILL BE UNDERTAKEN BY THE OWNER USING STRUCTURALLY APPROVED RETAINING STRUCTURES.
10. ADEQUATE SAFETY SIGNAGE MUST BE ERECTED IN A PROMINENT POSITION ON THE WORK SITE. WARNING OF UNAUTHORISED ENTRY TO WORK SITE AND INTENDING DANGERS.
11. SAFETY FENCES SHALL BE PROVIDED AROUND ALL BOUNDARIES UNLESS A CONTINUOUS STRUCTURALLY ADEQUATE FENCE PRESENTLY EXISTS. THE FENCING SHALL BE ADEQUATE TO RESTRICT PUBLIC ACCESS TO THE SITE WHEN BUILDING WORK IS NOT IN PROGRESS OR THE SITE IS UNOCCUPIED.
12. NOISE LEVELS SHALL NOT EXCEED COUNCIL REGULATION LEVELS. BUILDING AND DEMOLITION WORKS SHALL ONLY BE CARRIED OUT BETWEEN HOURS AND DAYS SPECIFIED BY COUNCIL.
13. GEOTEXTILE FABRIC SHALL BE PLACED ON THE INSIDE OF THE SITE FENCING PRIOR TO SITE DISTURBANCE TO PREVENT SEDIMENT WASHING FROM CLEARED AND DISTURBED AREAS OF THE SITE INTO THE STORMWATER SYSTEM DURING CONSTRUCTION UNCONTAMINATED RUNOFF FROM CLEARED OR DISTURBED AREAS IS TO BE COLLECTED TO + TREATED BY SILT ARRESTORS BE KEPT MOIST TO BE PROVIDED WITHIN THE SITE AT THE STREET BOUNDARY PROCESSING SITE STORMWATER BEFORE IT IS DISCHARGED TO THE STREET DRAINAGE SYSTEM OR WATERCOURSE.
14. ALL TOP SOIL STRIPPED + STOCKPILED ON SITE IS TO BE PLACED IN NOMINATED AREAS ON PLAN. ALL DISTURBED AREAS ARE TO BE STABILISED UPON THE COMPLETION OF BUILDING WORKS.
15. ALL SEDIMENT CONTROL STRUCTURES ARE TO BE CONTINUALLY MAINTAINED DURING CONSTRUCTION AND INSPECTED FOR STRUCTURAL DAMAGE AFTER EACH RAINFALL EVENT, WITH TRAPPED SEDIMENT BEING REMOVED TO THE TOPSOIL STOCKPILE.
16. WHERE THERE IS THE POTENTIAL OF SITE EROSION TO PRODUCE EXCESSIVE SEDIMENT RUNOFF SUITABLE GEOTEXTILE BARRIERS SHALL BE PLACED TO REDUCE THE RISK OF AVOIDING EROSION. BARE SURFACES SHALL BE KEPT MOIST TO REDUCE DUST LEVELS. GEOTEXTILE FABRIC LOCATED ON THE INSIDE OF FENCES SHALL ALSO BE UTILISED FOR DUST CONTROL WHERE NECESSARY.

[illegible]