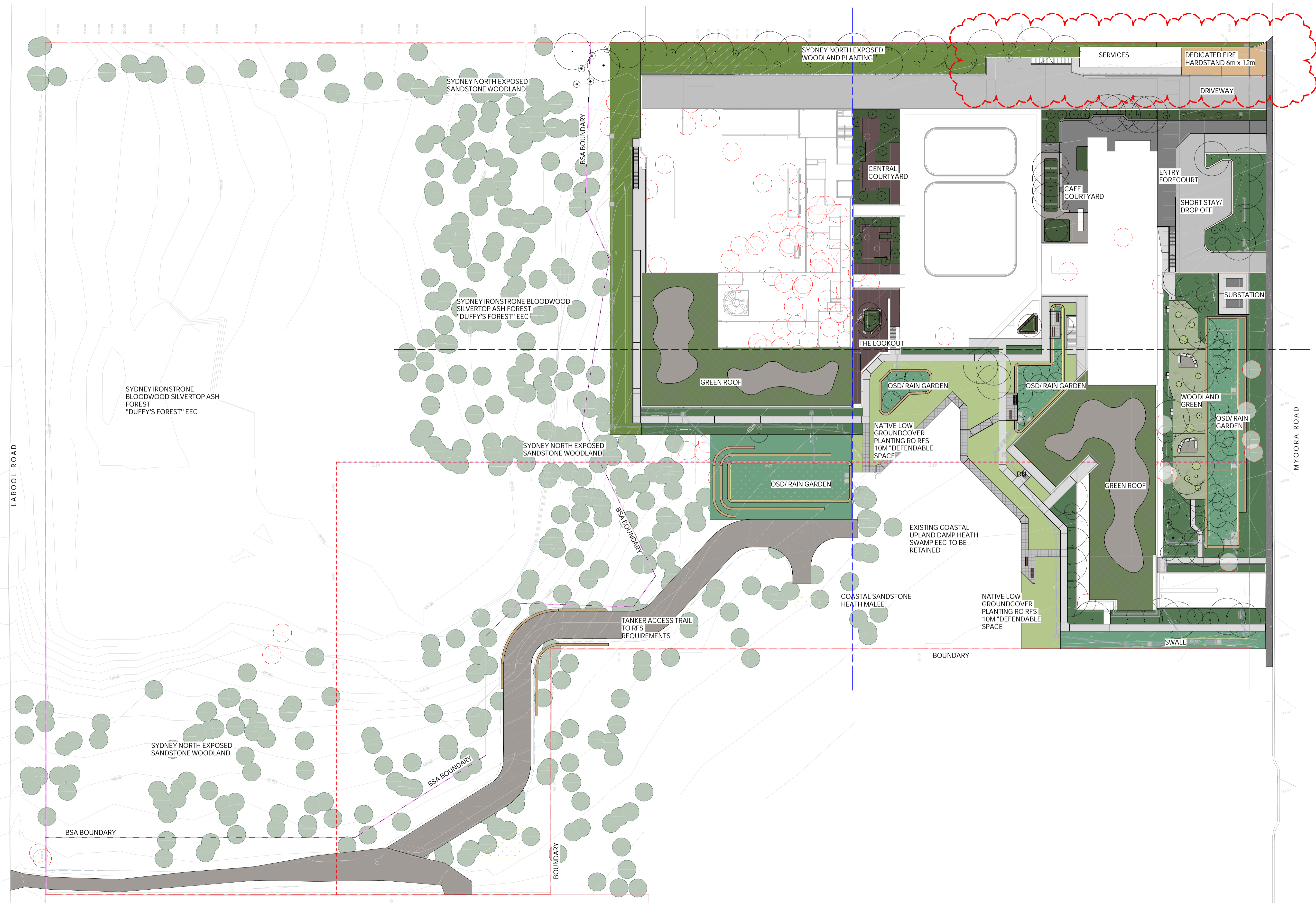


Pty Ltd. Use only figured dimensions. Any other required dimensions are to be referred to and supplied by the landscape architect. All discrepancies to be referred to the project manager and Arcadia Design Group Pty Ltd prior to construction. Ensure compliance with the Building Code of Australia and all relevant Australian Standards and Authority requirements.

Keyplan



Revision	Revision Description	Revision Date
E	S455	04/08/2022
D	S455	13/07/2022
C	S455	11/07/2022
B	S455	20/06/2022
A	S455	03/06/2022

Revision Revision Description Revision Date

Project
Wyvern Hospital

LOT 02, LAROO ROAD,
TERRY HILLS

Project Status
S455



Drawing No. 101
Drawing Name
Landscape Master Plan

Job No. 21-745
Issue E
Scale 1:400 @ A1
0 1 2 3 4 5m

Sydney, Suite 76, Jones Bay Wharf, 26-32 Pirrama Road, Pyrmont NSW 2009
E sydney@arcadiala.com.au
T 02 8571 2900



GENERAL

	SITE BOUNDARY
	BASEMENT BELOW
	BUILDING ABOVE
	APZ

SETOUT

	ANGLE MEASUREMENT
	DISTANCE MEASUREMENT
	RADIUS MEASUREMENT
	SETOUT GUIDES
	SETOUT MARKER

GRADING

	REDUCED LEVEL
	FINISHED FLOOR LEVEL
	TOP / BOTTOM OF STEP
	STEP HEIGHT
	TOP / BOTTOM OF WALL
	TOP OF STORMWATER PIT
	TOP OF SEAT
	TOP / BOTTOM OF RAMP

HARDWORKS

PAVING & SURFACES

	INSITU CONCRETE PAVING Refer Landscape Specification	
	INSITU CONCRETE PAVING (TRAFFICABLE) Refer Landscape Specification	
	BLUESTONE GRANITE PAVING Refer Landscape Specification	
	BLUESTONE GRANITE PAVING (TRAFFICABLE) Refer Landscape Specification	
	GRAVEL Refer Landscape Specification	
	PERMEABLE FRP DECK Refer Landscape Specification	
	TIMBER DECKING Refer Landscape Specification	
	COMPACTED DECOMPOSED GRAVEL Refer Landscape Specification	
EDGES		
	STEEL EDGE Refer Landscape Specification	
	CONCRETE EDGE Refer Landscape Specification	
WALLS		
	INSITU CONCRETE WALL Refer Landscape Specification	
	TIMBER SEATING WALL Refer Landscape Specification	
	SANDSTONE LOG WALL Refer Landscape Specification	
	SANDSTONE GABION WALL Refer Landscape Specification	

STAIRS, RAMPS, HANDRAILS & BALUSTRADES

	TIMBER STAIR Refer Landscape Specification	
	INSITU CONCRTE STAIR Refer Landscape Specification	
	INSITU CONCRTE STAIR WITH GRANITE PAVING Refer Landscape Specification	
	TACTILE INDICATORS Refer Landscape Specification	
	RAMP Refer Landscape Specification	
	HANDRAIL Type 1 Refer Landscape Specification	
	BALUSTRADE Type 1 Refer Landscape Specification	
FURNITURE & ART		
	FURNITURE Type 1 - TIMBER SEAT Refer Landscape Specification	
	FURNITURE Type 2 - CORIAN SEAT Refer Landscape Specification	
	BOLLARD Refer Landscape Specification	
	REMOVABLE BOLLARD Refer Landscape Specification	
	BIN Refer Landscape Specification	
	LIGHTING Type 1 - POLE LIGHTING Refer Landscape Specification	

SOFTWORKS

	EXISTING TREES TO BE RETAINED Refer to Arborist Report for details
	EXISTING TREES TO BE REMOVED Refer to Arborist Report for details
	PROPOSED ENDEMIC TREE PLANTING Refer Landscape Specification
	PROPOSED PALM PLANTING Refer Landscape Specification
	COASTAL SANDSTONE HEATH-MALEE MATRIX PLANTING Refer Plant Schedule
	BIORETENTION/RAIN GARDEN LANDSCAPE WITH COASTAL UPLAND DAMP HEATH SWAMP MATRIX PLANTING Refer Plant Schedule
	INTERNAL HOSPITAL NATIVE LANDSCAPE PLANTING Refer Plant Schedule
	SYDNEY NORTH EXPOSED SANDSTONE WOODLAND PLANT COMMUNITY MATRIX PLANTING Refer Plant Schedule
	LAWN ZONE WITH DUFFYS FOREST TREE CANOPY PLANTING Refer Plant Schedule
	10M NATIVE LOW GROUND COVER PLANTING TO 'DEFENDABLE' SPACE TO MEET ALL RFS REQUIREMENTS Refer Plant Schedule
	ENDEMIC 'GREEN ROOF' PLANTING MATRIX Refer Plant Schedule

Keyplan

E	S455	04/08/2022
D	S455	13/07/2022
C	S455	11/07/2022
B	S455	20/06/2022
A	S455	03/06/2022

Revision Revision Description Revision Date

Project

Wyvern Hospital

LOT 02, LARROOL ROAD,
TERRY HILLS

Project Status
S455

Client



Drawing No. 103
Drawing Name
Landscape Legend

Job No. 21-745
Issue E
Scale 1:50 @ A1



Sydney, Suite 76, Jones Bay Wharf, 26-32 Pirrama Road, Pyrmont NSW 2009
E sydney@arcadiala.com.au
T 02 8571 2900

ARCADIA

Planting Schedule				
BOTANIC NAME	COMMON NAME	MATURE SIZE (h x w) (m)	PROPOSED POT SIZE	QUANTITY

COATSAL SANDSTONE HEATH-MALEE PLANTING

Groundcovers & Grasses				
Xanthorrhoea resinosa	Grass tree		relocated	
Dampiera stricta	Glasshouse Glory		tube-150mm	
Lomandra obliqua	Mat-rush		tube-150mm	
Gleichenia dicarpa	Coral Fern		tube-150mm	
Epacris microphylla	Coral Heath		tube-150mm	
Epacris obtusifolia	Wallum Heath		tube-150mm	
Schoenus brevifolius	Zig-zag Bog-rush		tube-150mm	

Shrubs				
Banksia oblongifolia	Dwarf Banksia		tube-150mm	
Banksia paludosa	Swamp Banksia		tube-150mm	
Banksia ericifolia	Heath Banksia		tube-150mm	
Grevillea parviflora	Small-flower Grevillea		tube-150mm	
Grevillea speciosa	Red Spider-flower		tube-150mm	
Callistemon citrinus	Red Bottlebrush		tube-150mm	
Leptospermum grandifolium	Mountain Tea-tree		tube-150mm	
Leptospermum squarrosum	Pink Tea-tree		tube-150mm	
Hakea teretifolia	Dagger Hakea		tube-150mm	
Lambertia formosa	Mountain Devil		tube-150mm	

HOSPITAL ENTRY & COURTYARD & TERRACE & PODIUM PLANTING

Climbers & Scramblers				
Hibbertia scandens	Guinea Flower		150mm	
Hardenbergia violacea	Happy Wanderer		150mm	

Groundcovers & Grasses				
Dianella 'Little Jess'	Little Jess'		150mm	
Dianella 'Silver Streak'	'Silver Streak'		150mm	
Lomandra 'Tanika'	Mat-rush 'Tanika'		150mm	
Lomandra glauca 'Aussie Blue'	Aussie Blue'		150mm	
Myoporum parvifolium	Creeping Boobialla		150mm	
Viola hederacea	Native violet		150mm	

Shrubs				
Acmena smithii	Lillypilly		200mm	
Grevillea buxifolia	Grey Spider-flower		200mm	
Ceratopetalum gummifera	Christmas Bush		200mm	
Macrozamia communis	Burrawong		200mm	
Blechnum nudum	Water Fern		200mm	
Asplenium australasicum	Birds Nest Fern		200mm	
Cordyline stricta	Palm Lily		150mm	
Cyathea cooperi	Tree Fern		25L	
Doodia aspera	Rasp Fern		150mm	

HOSPITAL GREEN ROOF ENDEMIC MATRIX PLANTING

Groundcovers & Grasses				
Xanthorrhoea resinosa	Grass tree		relocated	
Gahnia sieberiana	Sword Grass		tube-150mm	
Juncus Usitatus	Common Rush		tube-150mm	
Isolepis nodosa	Club-rush		tube-150mm	
Lomandra longifolia	Piny-head Mat-rush		tube-150mm	
Schoenus brevifolius	Zig-zag Bog-rush		tube-150mm	
Epacris microphylla	Coral Heath		tube-150mm	
Epacris obtusifolia	Wallum Heath		tube-150mm	
Lomandra glauca 'Aussie Blue'	Aussie Blue'		tube-150mm	

Shrubs				
Correa reflexa	Native Fuchsia		tube-150mm	
Correa alba	White correa		tube-150mm	
Westringia fruticosa	Coastal rosemary		tube-150mm	

Planting Schedule				
BOTANIC NAME	COMMON NAME	MATURE SIZE (h x w) (m)	PROPOSED POT SIZE	QUANTITY

OSD/RAINGARDEN COASTAL DAMP HEATH SWAMP PLANTING

Groundcovers & Grasses				
Xanthorrhoea resinosa	Grass tree		relocated	
Dampiera stricta	Glasshouse Glory		tube-150mm	
Gahnia sieberiana	Sword Grass		tube-150mm	
Juncus Usitatus	Common Rush		tube-150mm	
Isolepis nodosa	Club-rush		tube-150mm	
Lomandra longifolia	Piny-head Mat-rush		tube-150mm	
Gleichenia dicarpa	Coral Fern		tube-150mm	
Baumea acuta	Twig Rush		tube-150mm	
Baumea teretifolia	Common Twig Rush		tube-150mm	
Schoenus brevifolius	Zig-zag Bog-rush		tube-150mm	
Epacris microphylla	Coral Heath		tube-150mm	
Epacris obtusifolia	Wallum Heath		tube-150mm	

Shrubs				
Banksia oblongifolia	Dwarf Banksia		tube-150mm	
Banksia paludosa	Swamp Banksia		tube-150mm	
Banksia ericifolia	Heath Banksia		tube-150mm	
Grevillea parviflora	Small-flower Grevillea		tube-150mm	
Grevillea speciosa	Red Spider-flower		tube-150mm	
Callistemon citrinus	Red Bottlebrush		tube-150mm	
Leptospermum grandifolium	Mountain Tea-tree		tube-150mm	
Leptospermum squarrosum	Pink Tea-tree		tube-150mm	
Allocasuarina distylla	Scrub She-Oak		tube-150mm	

RFS 10M DEFENDABLE SPACE NATIVE PLANTING

Groundcovers & Grasses				
Microlaena stipoides	Weeping Grass		tube-seed	

SYDNEY NORTH EXPOSED WOODLAND PLANTING

Groundcovers & Grasses				
Dampiera stricta	Glasshouse Glory		tube-150mm	
Lomandra obliqua	Mat-rush		tube-150mm	
Lomandra glauca	Spiny-Head Mat-Rush		tube-150mm	
Epacris microphylla	Coral Heath		tube-150mm	
Epacris obtusifolia	Wallum Heath		tube-150mm	
Schoenus brevifolius	Zig-zag Bog-rush		tube-150mm	

Shrubs				
Baronia ledifolia	Sydney Baronia		tube-150mm	
Banksia paludosa	Swamp Banksia		tube-150mm	
Banksia ericifolia	Heath Banksia		tube-150mm	
Grevillea speciosa	Red Spider-flower		tube-150mm	
Grevillea buxifolia	Grey Spider-flower		tube-150mm	
Acacia suaveolens	Sweet Wattle		tube-150mm	
Leptospermum trinervium	Slender Tea-tree		tube-150mm	
Leptospermum squarrosum	Pink Tea-tree		tube-150mm	
Patersonia glabrata	Chocolate Lily		tube-150mm	
Patersonia pulchella	Chocolate Lily		tube-150mm	
Hakea teretifolia	Dagger Hakea		tube-150mm	
Lambertia formosa	Mountain Devil		tube-150mm	

Grand total: 86

Tree Plant Schedule						
Type Mark	Tree Botanical Name	Tree Common Name	Tree Mature Size	Tree Proposed Pot Size	Number of Trees removed for DA	Minimum Number of Trees required to meet Replacement Requirements

Ac	Angophora crassifolia	Narrow-leaved Apple	10 x 5	45L	1	3
Ah	Angophora hispida	Dwarf Apple	7 x 5	45L		
Al	Allocasuarina littoralis	Black She-Oak	10 x 5	45L	48	144
Be	Banksia ericifolia	Heath-leaved Banksia	5 x 2	45L		1180
Bs	Banksia serrata	Old Mans Banksia	6 x 2	45L	6	18
Cg	Corymbia gummifera	Red Bloodwood	20 x 10	45L	50	150
Cr	Callitis rhomboidea	Oyster Bay Pine	12 x 4	45L		
Cs	Callistemon salignus	Willow Bottlebrush	10 x 5	45L		
Eh	Eucalyptus haemastoma	Scribbly Gum	20 x 10	45L		
Er	Elaeocarpus reticulatus	Blueberry Ash	15 x 10	45L		
Es	Eucalyptus sieberi	Silver-top Ash	30 x 12	45L		
Gf	Glochidion ferdinandi	Cheese Tree	30 x 10	45L		
La	Livistona australis	Cabbage Tree Palm	25 x 2	45L		

Pty Ltd. Use only figured dimensions. Any other required dimensions are to be referred to and supplied by the landscape architect. All discrepancies to be referred to the project manager and Arcadia Design Group Pty Ltd prior to construction. Ensure compliance with the Building Code of Australia and all relevant Australian Standards and Authority requirements.

Keyplan

E	S455	04/08/2022
D	S455	13/07/2022
C	S455	11/07/2022
B	S455	20/06/2022
A	S455	03/06/2022

Revision Revision Description Revision Date

Project

Wyvern Hospital

LOT 02, LARROOL ROAD,
TERRY HILLS

Project Status

S455

Client



Drawing No. Planting Name

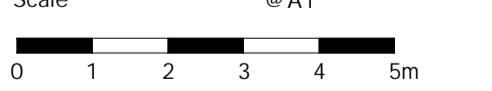
104

Planting Schedule

Job No. 21-745

Issue E

Scale @ A1



Sydney, Suite 76, Jones Bay Wharf, 26-32 Pirrama Road, Pyrmont NSW 2009
E sydney@arcadiala.com.au
T 02 8571 2900

ARCADIA