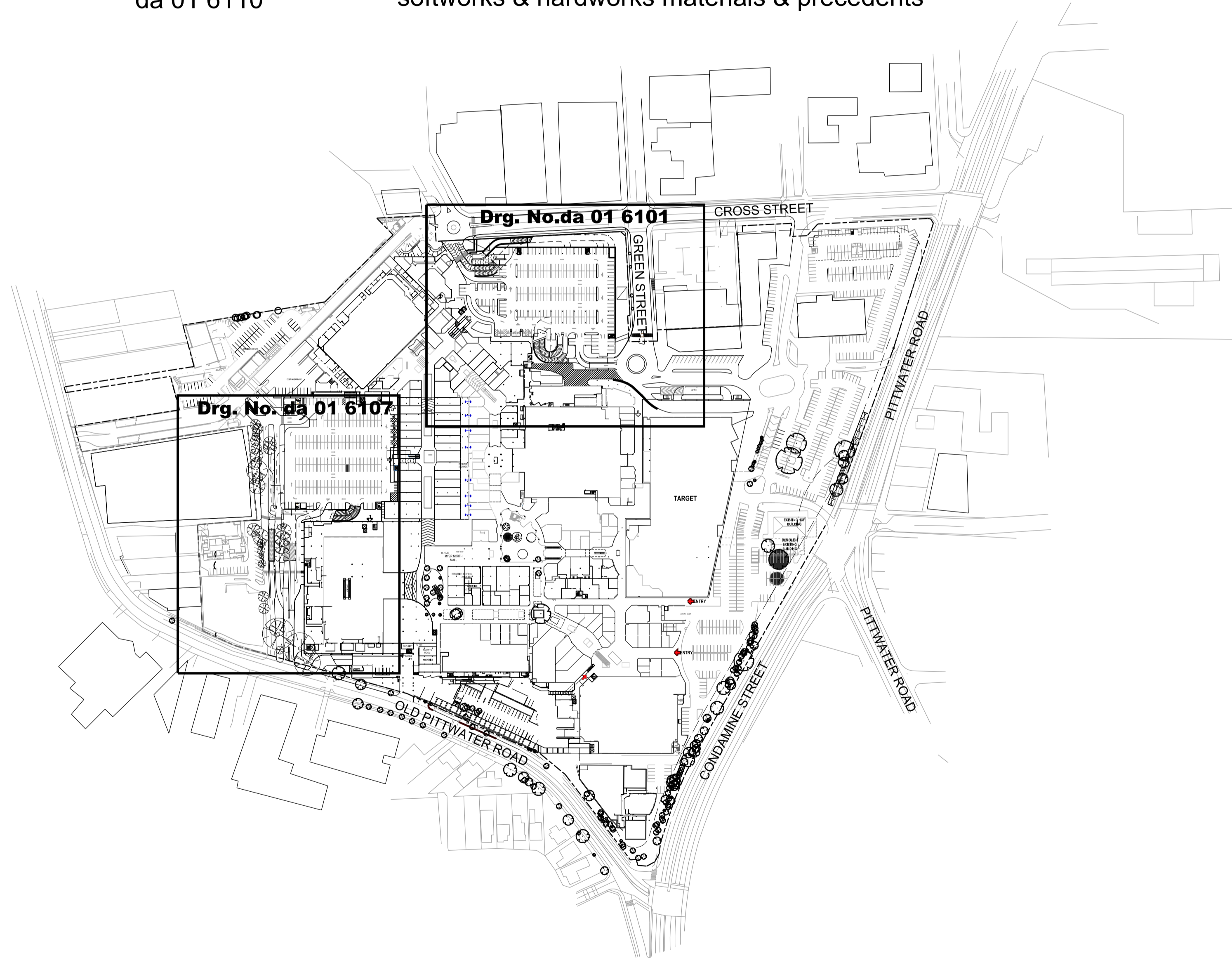


# Warringah Mall Stage 01

## LANDSCAPE ARCHITECTURAL DRAWINGS FOR SECTION 96 APPROVAL

drawing no.	drawing name
da 01 6100	cover and drawing list
da 01 6101	landscape plan sheet 1 of 2 ground level Palm Tree Car Park
da 01 6102	landscape sections Cross Street & Green Street
da 01 6103	landscape northern elevation Cross Street
da 01 6107	landscape plan sheet 2 of 2 ground level Star Fish Car Park
da 01 6108	landscape eastern elevation Green Street
da 01 6109	landscape western elevation Star Fish Car Park
da 01 6110	softworks & hardworks materials & precedents



© copyright of dem (austr) Pty Limited abn 92 085 486 844. any unauthorised use or distribution of information depicted on this document without dem (austr) Pty Limited prior consent is prohibited.

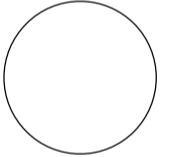
any reports, drawings, advice or information included or referenced that is prepared and/or provided by any other party, including the client/principal, is the sole representation of the party who prepared the report/drawing, advice or information and does not constitute a representation by dem (austr) Pty Limited. dem (austr) Pty Limited expressly takes no responsibility for any documents, advice or other material prepared by any other party.

figured dimensions to be taken in preference to scaled dimensions, verify all dimensions on the job before preparing shop drawings or commencing work. dimensions shown are computer generated and the contractor is to apply standard building tolerances.

verified suitable for the use stipulated by the relevant revision/issue only if initialed and checked by an authorised dem (austr) Pty Limited representative.

amendments				verified		
no.	date	amendment	by	chk'd	init	chk'd
a01	07.05.13	pre section 96 issue	J	J	ab	ab
a02	21.05.13	pre section 96 issue	J	J	ph	ph
a03	28.05.13	section 96 issue	J	J	ab	ab
a04	14.10.13	section 96 issue	pn	pn	ab	ab
a05	27.02.14	section 96 issue	pn	pn	ab	ab
a06	20.10.14	section 96 issue	pn	pn	ab	ab
a07	21/08/15	section 96 issue	pn	pn	ab	ab

north point



dem

division: landscape architecture

level 8 15 help street chatswood nsw 2067  
 p: po box 5036 west chatswood nsw 1515  
 t: (02) 8966 6000 f: (02) 8966 6111  
 e: sydney@dem.com.au

project/client

**Warringah Mall  
 Stage 01**

Scentre Design & Construction Pty Ltd  
 85 Castlereagh Street  
 Sydney NSW 2000

consultant

drawing title

cover & drawing list

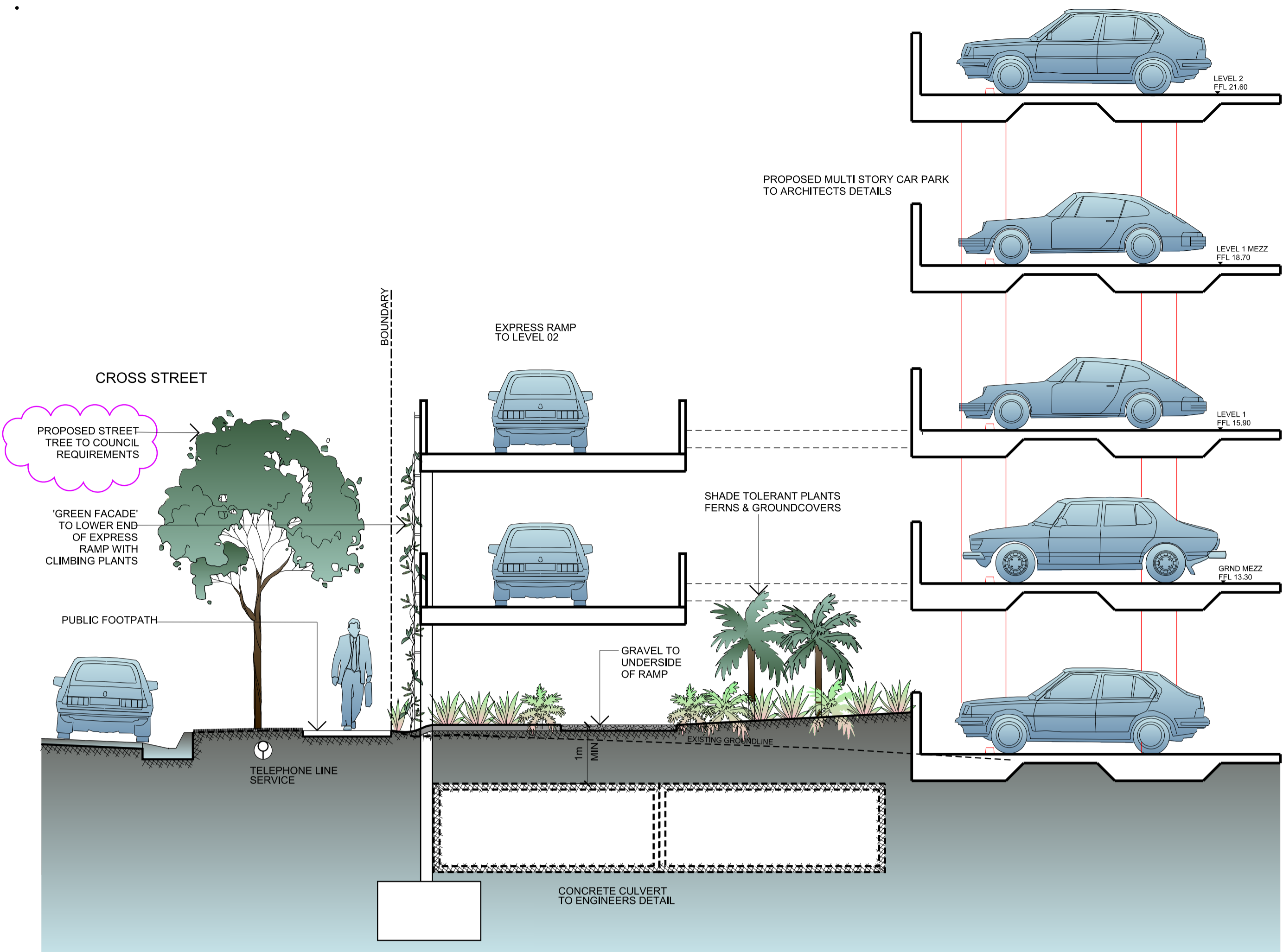
### section 96

original	scale	drawn	project no.
b1	1:2000	JL	4296-00

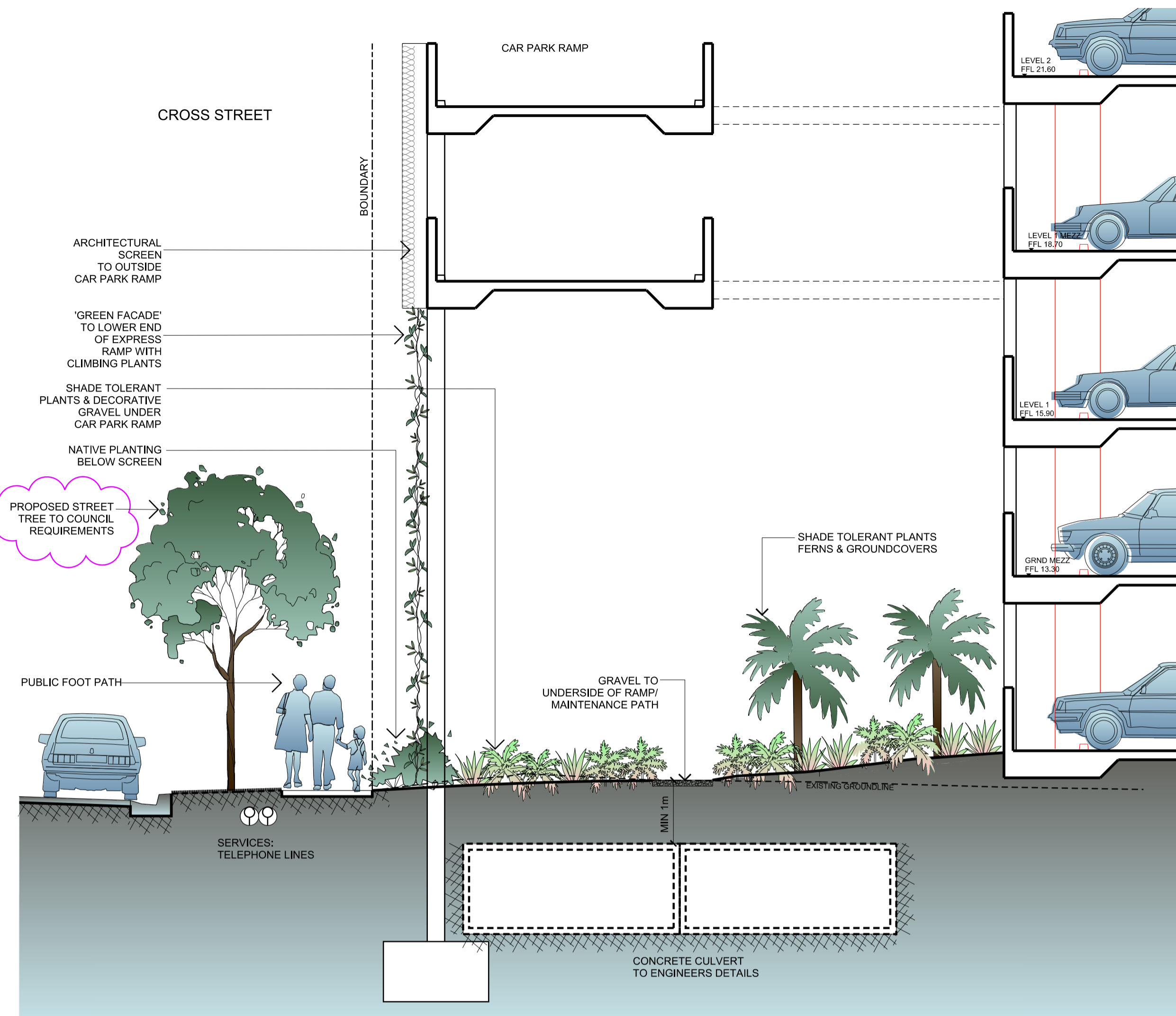
drawing no. rev. no.

**da 01 6100** A07

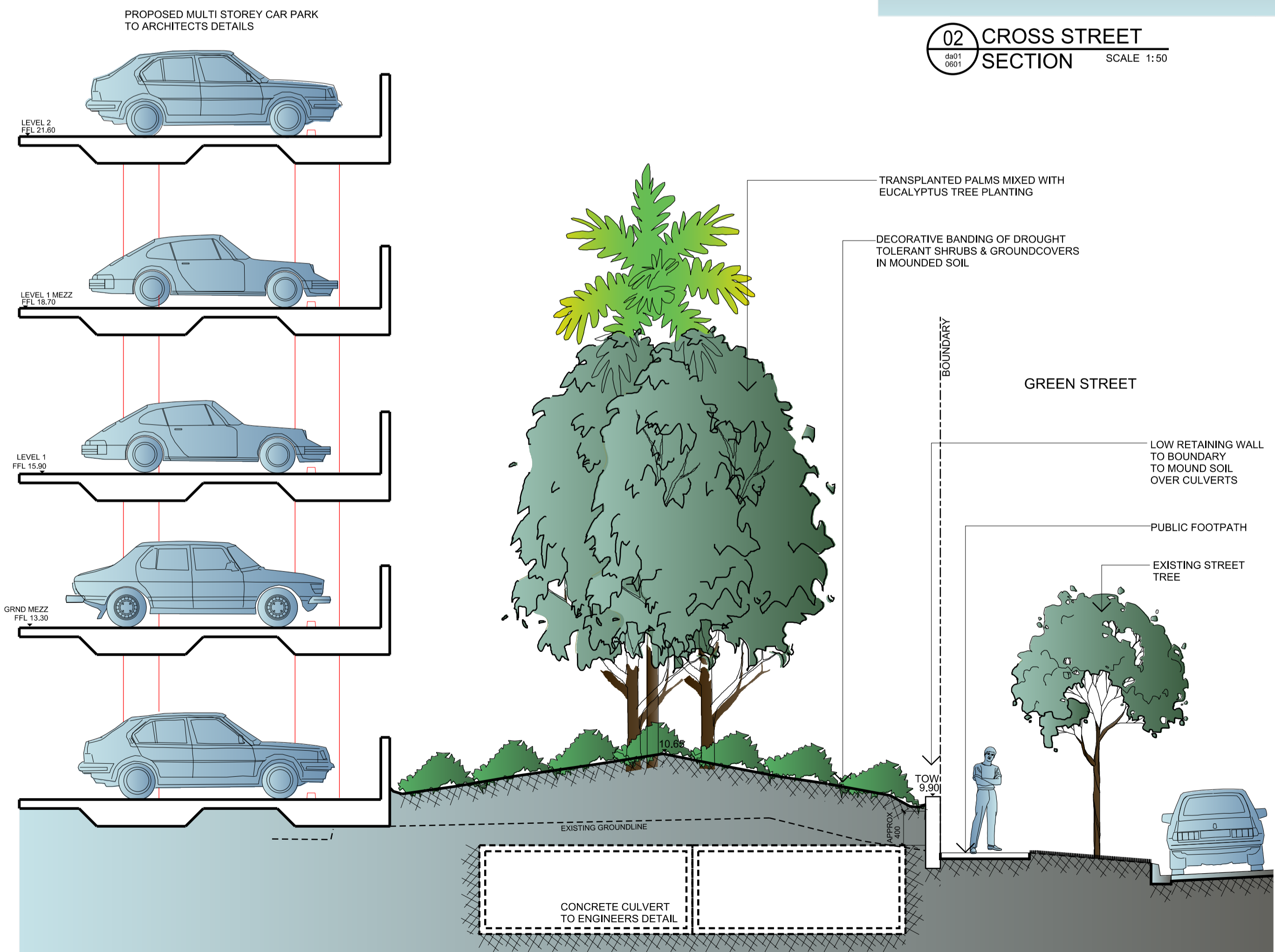




01 CROSS STREET SECTION SCALE 1:50



02 CROSS STREET SECTION SCALE 1:50



03 GREEN STREET SECTION SCALE 1:50

© copyright of dem (austr) Pty Limited abn 92 085 486 844. any unauthorised use or distribution of information depicted on this document without dem (austr) Pty Limited prior consent is prohibited.

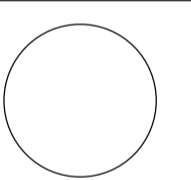
any reports, drawings, advice or information included or referenced that is prepared and/or provided by any other party, including the client/principal, is the sole representation of the party who prepared the report/drawing, advice or information and does not constitute a representation by dem (austr) Pty Limited. dem (austr) Pty Limited expressly takes no responsibility for any documents, advice or other material prepared by any other party.

figured dimensions to be taken in preference to scaled dimensions, verify all dimensions on the job before preparing shop drawings or commencing work. dimensions shown are computer generated and the contractor is to apply standard building tolerances.

verified suitable for the use stipulated by the relevant revision/issue only if initiated and checked by an authorised dem (austr) Pty Limited representative.

no.	date	amendment	by	chk'd	init	chk'd
a01	05.11.08	preliminary for review	pn	ab		
a02	17.11.08	preliminary for review	pn	ab		
a03	28.11.08	coordination and review	ab	ab		
a04	03.12.08	client review & coordination	ab	ab		
a05	09.12.08	da issue	pn	pn	ab	ab
a06	21.07.09	preliminary for review	pn	pn	ab	ab
a07	14.08.09	da issue	pn	pn	ab	ab
a08	03.02.10	da issue	ab	ab	ab	ab
a09	07.05.13	pre - 50% issue	pn	pn	ab	ab
a10	21.05.13	pre section 96 issue	pn	pn	ab	ab
a11	28.08.13	section 96 issue	pn	pn	ab	ab
a12	14.10.13	section 96 issue	pn	pn	ab	ab
a13	18.12.13	section 96 issue	pn	pn	ab	ab
a14	27.02.14	section 96 issue	pn	pn	ab	ab
a15	29.10.14	section 96 issue	pn	pn	ab	ab
a16	21.08.15	section 96 issue	pn	pn	ab	ab

north point



dem

division: landscape architecture

level 8 15 help street chatswood nsw 2067  
p: po box 5036 west chatswood nsw 1515  
t: (02) 8966 6000 f: (02) 8966 6111  
e: sydney@dem.com.au

project/client

**Warringah Mall  
Stage 01**

Scentre Design & Construction Pty Ltd  
85 Castlereagh Street  
Sydney NSW 2000  
consultant

drawing title

landscape sections  
Cross Street & Green Street

**section 96**

original scale drawn project no.

b1 as shown jl 4296-00

drawing no. rev no.

da 01 6102 a16

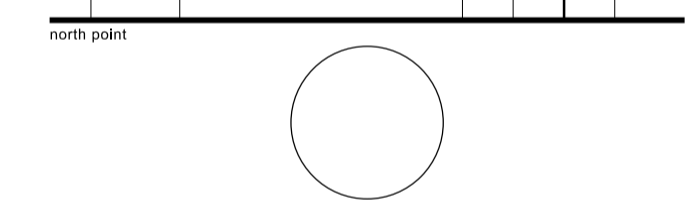


© copyright of dem (austr) Pty limited abn 92 085 486 844.  
 any unauthorised use or distribution of information depicted on this document without dem (austr) Pty limited prior consent is prohibited.  
 any reports, drawings, advice or information included or referenced that is prepared and/or provided by any other party, including the client/principal, is the sole representation of the party who prepared the report/drawing, advice or information and does not constitute a representation by dem (austr) Pty limited. dem (austr) Pty limited expressly takes no responsibility for any documents, advice or other material prepared by any other party.

figured dimensions to be taken in preference to scaled dimensions, verify all dimensions on the job before preparing shop drawings or commencing work. dimensions shown are computer generated and the contractor is to apply standard building tolerances.

verified suitable for the use stipulated by the relevant revision/issue only if initiated and checked by an authorised dem (austr) Pty limited representative.

amendments				verified	
no.	date	amendment	by	chk'd	init
a01	17.11.08	preliminary for review	jh		
a02	28.11.08	coordination and review	ab	ab	
a03	03.12.08	ident review & coordination	ab	ab	
a04	09.12.08	da issue	jh	ab	ab
a05	21.07.09	preliminary for review	jh	ab	ab
a06	14.08.09	da issue	jh	ab	ab
a07	03.02.10	da issue	ab	ab	ab
a08	15.03.10	da issue - soil depth increased	ab	ab	ab
A09	07.05.13	pre - 10% issue	j	ab	ab
A10	21.05.13	pre section 96 issue	j	jh	jh
a11	28.08.13	section 96 issue	j	ab	ab
a12	14.10.13	section 96 issue	pn	ab	ab
a13	19.12.13	section 96 issue	pn	ab	ab
a14	27.02.14	section 96 issue	pn	ab	ab
a15	26.10.14	section 96 issue	pn	ab	ab
a16	21.08.15	section 96 issue	pn	ab	ab



dem

division: landscape architecture  
 level 8 15 help street chatswood nsw 2067  
 p: po box 5036 west chatswood nsw 1515  
 t: (02) 8966 6000 f: (02) 8966 6111  
 e: sydney@dem.com.au

project/client  
**Warringah Mall Stage 01**

Scentre Design & Construction Pty Ltd  
 85 Castlereagh Street  
 Sydney NSW 2000  
 consultant

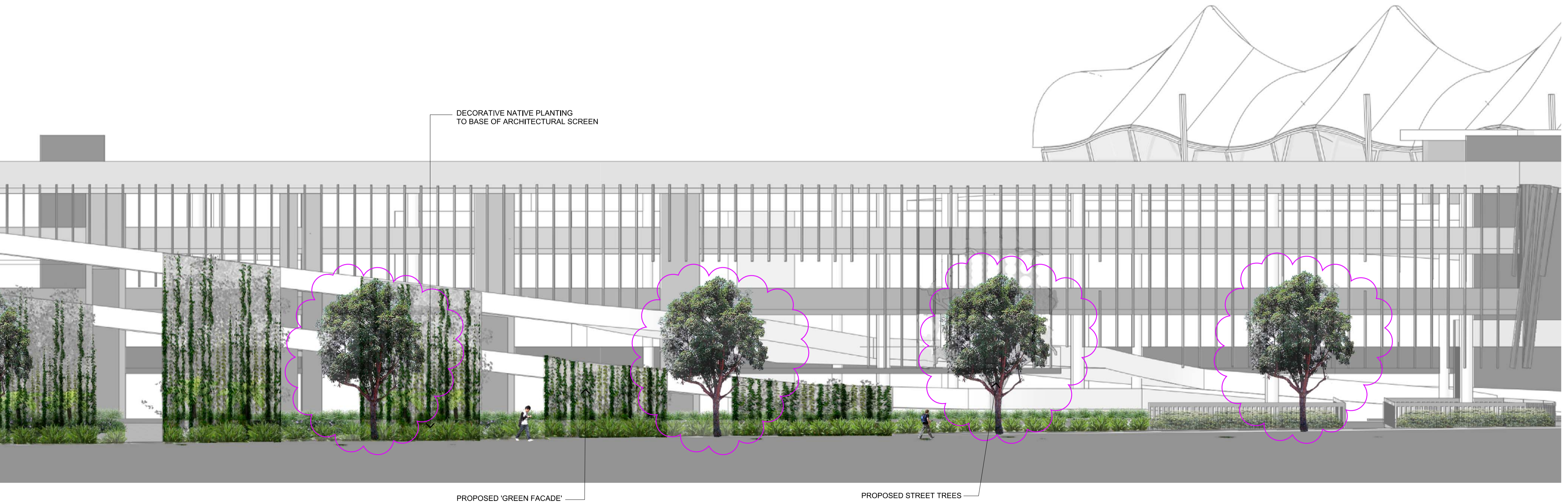
drawing title  
 landscape northern elevation  
 Cross Street

**section 96**

original	scale	drawn	project no.
b1	as shown	jl	4296-00
drawing no.			rev. no.
<b>da 01 6103</b>			<b>A16</b>

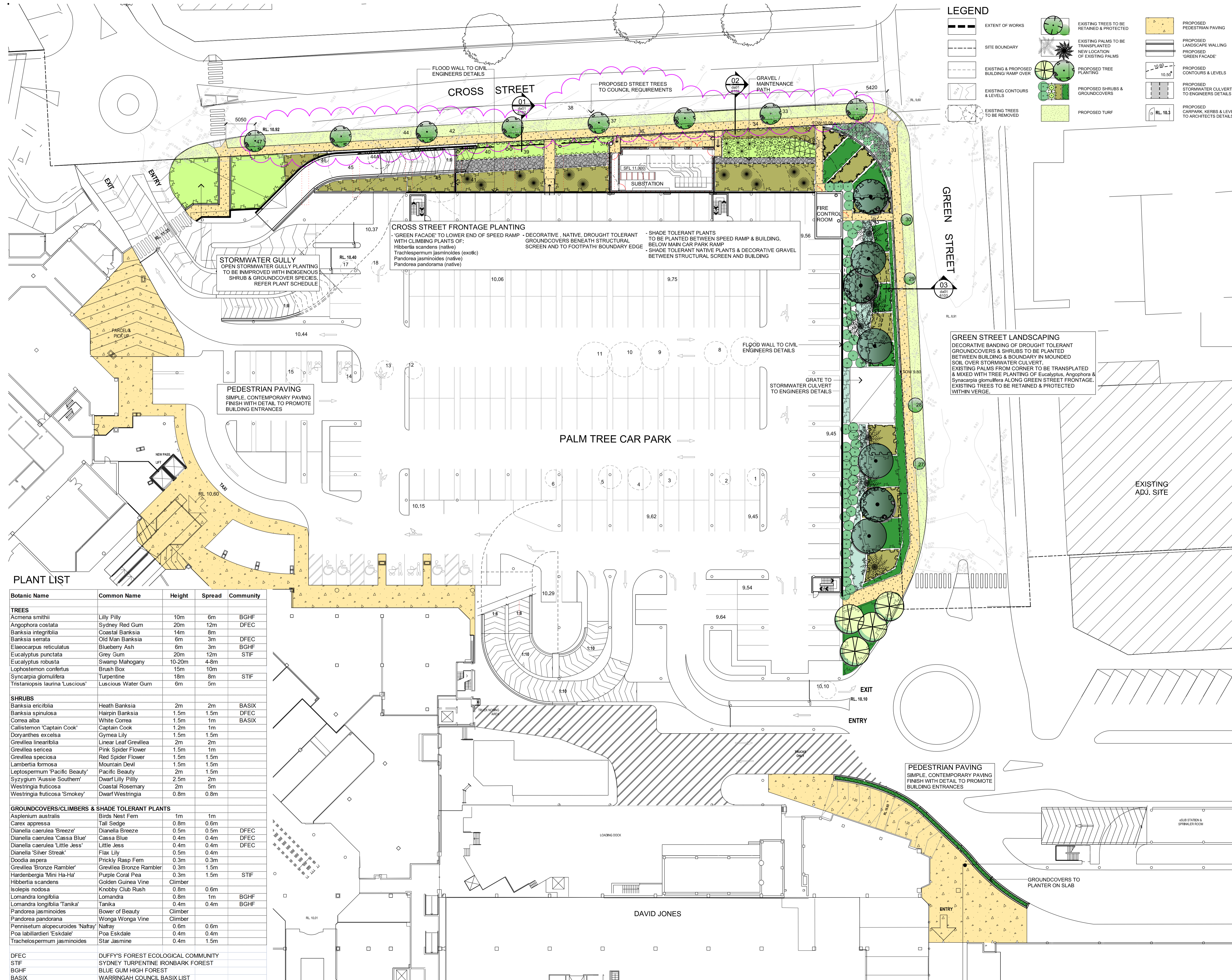


CROSS STREET ELEVATION  
 NTS



CROSS STREET ELEVATION  
 NTS





**LEGEND**

- EXTENT OF WORKS
- SITE BOUNDARY
- EXISTING & PROPOSED BUILDING/ RAMP OVER
- EXISTING CONTOURS & LEVELS
- EXISTING TREES TO BE REMOVED
- EXISTING TREES TO BE RETAINED & PROTECTED
- EXISTING PALMS TO BE TRANSPLANTED
- NEW LOCATION OF EXISTING PALMS
- PROPOSED TREE PLANTING
- PROPOSED SHRUBS & GROUNDCOVERS
- PROPOSED TURF
- PROPOSED PEDESTRIAN PAVING
- PROPOSED LANDSCAPE WALLING
- PROPOSED 'GREEN FACADE'
- PROPOSED CONTOURS & LEVELS
- PROPOSED STORMWATER CULVERTS TO ENGINEERS DETAILS
- PROPOSED CARPARK KERBS & LEVELS TO ARCHITECTS DETAILS

© copyright of dem (austr) Pty limited abn 92 085 486 844. any unauthorised use or distribution of information depicted on this document without dem (austr) Pty limited prior consent is prohibited.

any reports, drawings, advice or information included or referenced that is prepared and/or provided by any other party, including the client/principal, is the sole representation of the party who prepared the report/drawing, advice or information and does not constitute a representation by dem (austr) Pty limited. dem (austr) Pty limited expressly takes no responsibility for any documents, advice or other material prepared by any other party.

figured dimensions to be taken in preference to scaled dimensions, verify all dimensions on the job before preparing shop drawings or commencing work. dimensions shown are computer generated and the contractor is to apply standard building tolerances.

verified suitable for the use stipulated by the relevant revision/issue only if installed and checked by an authorised dem (austr) Pty limited representative.

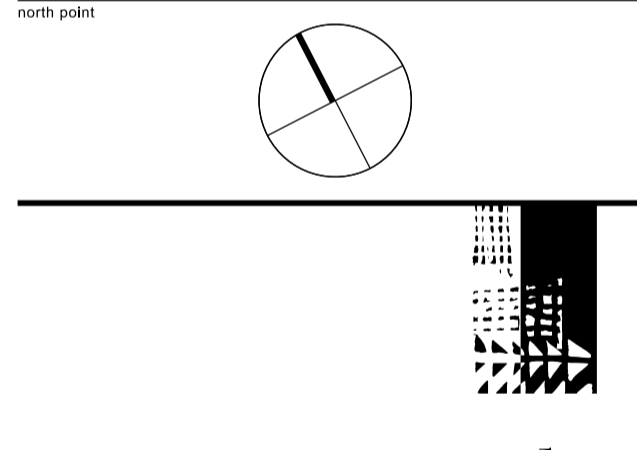
no.	date	amendment	by	chk'd	init	chk'd	verified
a01	05.11.08	preliminary for review	ab				
a02	17.11.08	preliminary for review	ab				
a03	28.11.08	coordination and review	ab				
a04	03.12.08	client review & coordination	jh				
a05	09.12.08	da issue	jh				
a06	21.07.09	preliminary for review	jh				
a07	14.08.09	da issue	jh				
a08	03.02.10	da issue	ab				
a09	15.03.10	da issue - soil depths increased	ab				
a10	07.05.13	pre - 99% issue	j				
a11	21.05.13	pre section 96 issue	j				
a12	28.08.13	section 96 issue	j				
a13	14.10.13	section 96 issue	pn				
a14	27.02.14	section 96 issue	pn				
a15	21/09/15	section 96 issue	pn				

**PLANT LIST**

Botanic Name	Common Name	Height	Spread	Community
<b>TREES</b>				
<i>Acmena smithii</i>	Lilly Pilly	10m	6m	BGHF
<i>Angophora costata</i>	Sydney Red Gum	20m	12m	DFEC
<i>Banksia integrifolia</i>	Coastal Banksia	14m	8m	
<i>Banksia serrata</i>	Old Man Banksia	6m	3m	DFEC
<i>Elaeocarpus reticulatus</i>	Blueberry Ash	6m	3m	BGHF
<i>Eucalyptus punctata</i>	Grey Gum	20m	12m	STIF
<i>Eucalyptus robusta</i>	Swamp Mahogany	10-20m	4-8m	
<i>Lophostemon confertus</i>	Brush Box	15m	10m	
<i>Syncarpia glomulifera</i>	Turpentine	18m	8m	STIF
<i>Tristania laurina</i> 'Luscious'	Luscious Water Gum	6m	5m	
<b>SHRUBS</b>				
<i>Banksia ericifolia</i>	Heath Banksia	2m	2m	BASIX
<i>Banksia spinulosa</i>	Hairpin Banksia	1.5m	1.5m	DFEC
<i>Correa alba</i>	White Correa	1.5m	1m	BASIX
<i>Callistemon 'Captain Cook'</i>	Captain Cook	1.2m	1m	
<i>Doryanthes excelsa</i>	Gymea Lily	1.5m	1.5m	
<i>Grevillea linearifolia</i>	Linear Leaf Grevillea	2m	2m	
<i>Grevillea sericea</i>	Pink Spider Flower	1.5m	1m	
<i>Grevillea speciosa</i>	Red Spider Flower	1.5m	1.5m	
<i>Lambertia formosa</i>	Mountain Devil	1.5m	1.5m	
<i>Leptospermum 'Pacific Beauty'</i>	Pacific Beauty	2m	1.5m	
<i>Syzygium 'Aussie Southern'</i>	Dwarf Lilly Pilly	2.5m	2m	
<i>Westringia fruticosa</i>	Coastal Rosemary	2m	5m	
<i>Westringia fruticosa</i> 'Smokey'	Dwarf Westringia	0.8m	0.8m	
<b>GROUNDCOVERS/CLIMBERS &amp; SHADE TOLERANT PLANTS</b>				
<i>Asplenium australis</i>	Birds Nest Fern	1m	1m	
<i>Carex appressa</i>	Tall Sedge	0.8m	0.6m	
<i>Dianella caerulea</i> 'Breeze'	Dianella Breeze	0.5m	0.5m	DFEC
<i>Dianella caerulea</i> 'Cassa Blue'	Cassa Blue	0.4m	0.4m	DFEC
<i>Dianella caerulea</i> 'Little Jess'	Little Jess	0.4m	0.4m	DFEC
<i>Dianella</i> 'Silver Streak'	Flax Lily	0.5m	0.4m	
<i>Doodia aspera</i>	Prickly Rasp Fern	0.3m	0.3m	
<i>Grevillea</i> 'Bronze Rambler'	Grevillea Bronze Rambler	0.3m	1.5m	
<i>Hardenbergia</i> 'Mini Ha-Ha'	Purple Coral Pea	0.3m	1.5m	STIF
<i>Hibbertia scandens</i>	Golden Guinea Vine	Climber		
<i>Isoplepis nodosa</i>	Kneebly Club Rush	0.8m	0.6m	
<i>Lomandra longifolia</i>	Lomandra	0.8m	1m	BGHF
<i>Lomandra longifolia</i> 'Tanika'	Tanika	0.4m	0.4m	BGHF
<i>Pandorea jasminoides</i>	Bower of Beauty	Climber		
<i>Pandorea pandorana</i>	Wonga Wonga Vine	Climber		
<i>Pennisetum alopecuroides</i> 'Nafray'	Nafray	0.6m	0.6m	
<i>Poa labillardieri</i> 'Eskdale'	Poa Eskdale	0.4m	0.4m	
<i>Trachelospermum jasminoides</i>	Star Jasmine	0.4m	1.5m	
DFEC	DUFFY'S FOREST ECOLOGICAL COMMUNITY			
STIF	SYDNEY TURPENTINE IRONBARK FOREST			
BGHF	BLUE GUM HIGH FOREST			
BASIX	WARRINGAH COUNCIL BASIX LIST			

amendments

no.	date	amendment	by	chk'd	init	chk'd	verified
a01	05.11.08	preliminary for review	ab				
a02	17.11.08	preliminary for review	ab				
a03	28.11.08	coordination and review	ab				
a04	03.12.08	client review & coordination	jh				
a05	09.12.08	da issue	jh				
a06	21.07.09	preliminary for review	jh				
a07	14.08.09	da issue	jh				
a08	03.02.10	da issue	ab				
a09	15.03.10	da issue - soil depths increased	ab				
a10	07.05.13	pre - 99% issue	j				
a11	21.05.13	pre section 96 issue	j				
a12	28.08.13	section 96 issue	j				
a13	14.10.13	section 96 issue	pn				
a14	27.02.14	section 96 issue	pn				
a15	21/09/15	section 96 issue	pn				



division: landscape architecture  
 level 8 15 help street chatswood nsw 2067  
 p: po box 5036 west chatswood nsw 1515  
 t: (02) 8966 6000 f: (02) 8966 6111  
 e: sydney@dem.com.au

**Warringah Mall Stage 01**

Scentre Design & Construction Pty Ltd  
 85 Castlereagh Street  
 Sydney NSW 2000  
 consultant

drawing title  
 landscape plan sheet 1 of 2  
 ground level  
 Palm Tree Car Park

**section 96**

original	scale	drawn	project no.
b1	1:250	j/ab	4296-00
drawing no.			rev. no.
da 01 6101			A15