



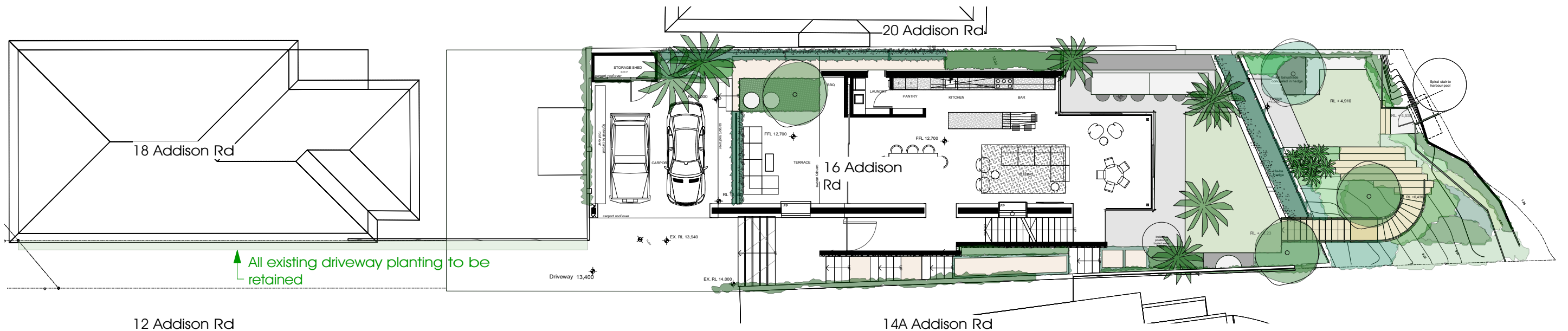
SITE LOCATION:


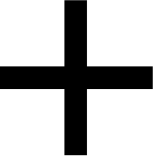


GIS ENVIRONMENTAL CONSULTANTS PREPARED BY -
Nicholas Skelton & Sophia Mueller Sewell

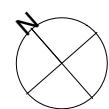
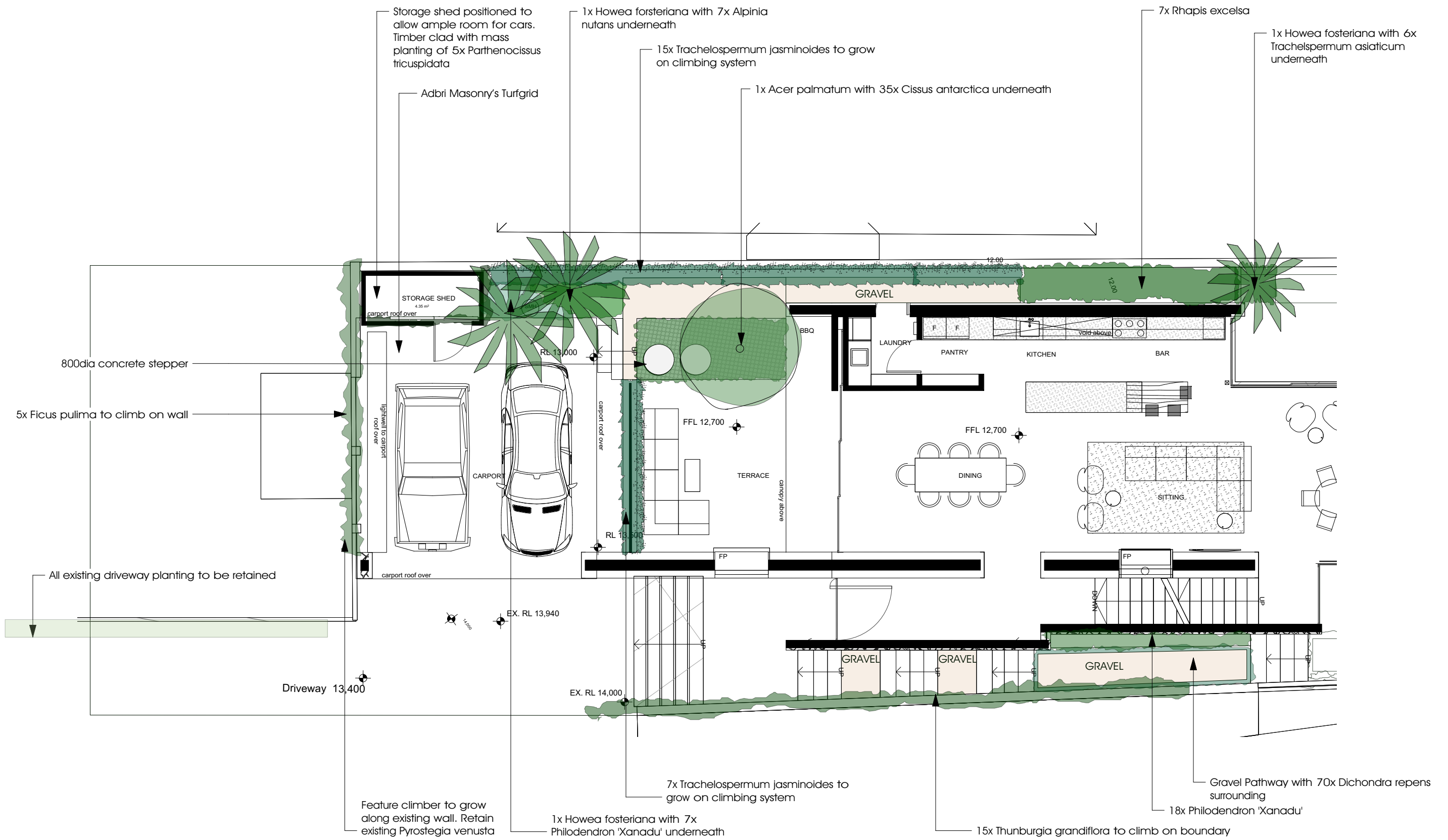
As per the Ecologists recommendations; native and endemic planting has been specified across the site (in particular in the lower rear garden to provide effective low, dense clumping habitat for Penguin foraging and nesting. The planting schedule comprises of species such as *Lomandra sp.*, *Banksia spinulosa*, *Isolepis nodosa*, *Themeda australis*, *Imperata cylindrica*, *Gleichenia dicarpa* and *Casuarina glauca 'cousin it'*, e.t.c.

New rear handrail to run along new terrace wall with self closing gate to have a 100mm gap along the entire base as per recommendation

| PLANT SCHEDULE | | | | |
|-------------------------------------|---------------------|-------------|----------|----------|
| Botanical Name | Common Name | Height(mm) | Pot Size | Quantity |
| <i>Acer palmatum</i> | japanese maple | 5000 | 300Ltr | 1 |
| <i>Alpinia nutans</i> | dwarf Cardamon | 3000 | 200 | 7 |
| <i>Banksia spinulosa</i> | hairpin banksia | 1200 | 300 | 10 |
| <i>Buxus sp</i> | buxus hedge | 900 | 300 | 38 |
| <i>Casuarina glauca 'Cousin It'</i> | cousin it | groundcover | 140 | 110 |
| <i>Cissus ellen danica</i> | grape ivy | groundcover | 140 | 35 |
| <i>Correa alba</i> | white correa | 4500 | 300 | 3 |
| <i>Crassula ovata</i> | jade | 1500 | 200 | 11 |
| <i>Dichondra repens</i> | kidney weed | groundcover | 140 | 115 |
| <i>Doryanthes excelsa</i> | gynea lily | 1000 | 300 | 7 |
| <i>Ficus pumila</i> | creeping fig | climber | 140 | 20 |
| <i>Gleichenia dicarpa</i> | coral fern | 400 | 140 | 170 |
| <i>Howea forsteriana</i> | kentia palm | 10000 | Adv. | 6 |
| <i>Imperata cylindrica</i> | Imperata cylindrica | 300 | 140 | 45 |
| <i>Isolepis nodosa</i> | knobby club rush | 400 | 140 | 25 |
| <i>Lomandra longifolia</i> | spiny-head mat-rush | 700 | 140 | 46 |
| <i>Olea europaea</i> | Olive tree | 7000 | 200Ltr | 1 |
| <i>Monstera sp</i> | Swiss cheese plant | climber | 250 | 7 |
| <i>Parthenocissus tricuspidata</i> | Bostin ivy | climber | 200 | 5 |
| <i>Pandanus sp.</i> | Screw Pine | 15000 | 400Ltr | 2 |
| <i>Pandorea pandorana</i> | wonga wonga vine | climber | 200 | 27 |
| <i>Philodendron 'Xanadu'</i> | Xanadu | 700 | 200 | 25 |
| <i>Rhapis excelsa</i> | Lady palm | 3000 | 45Ltr | 7 |
| <i>Themeda australis</i> | kangaroo grass | 1000 | 140 | 70 |
| <i>Thunbergia grandiflora</i> | blue thunbergia | climber | 200 | 15 |
| <i>Trachelospermum asiaticum</i> | asiatic jasmine | groundcover | 200 | 6 |
| <i>Trachelospermum jasminoides</i> | star jasmine | climber | 200 | 22 |



| | | | | | | | | | |
|--|------------------------------------|-------------------------|--------------|----------------|----------------------|---|---|---|-----------------------------------|
|  | Project: 16 Addison Road, Manly | Dwg no: LP01-D4819 | Drawn by: TS | Checked: WD | Scale: 1:100 @ A3 |  |  |  | DANGAR BARIN SMITH |
| | Client: Joyce | Title: DA Cover Page | Issue: 01 | Revision: E | Date: 28.01.2021 | | | | |



Project:
16 Addison Road, Manly

Client:
Joyce

Dwg no:
LP02-D4819

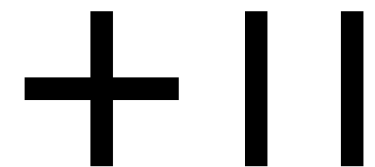
Title:
Landscape Plan
Ground

Drawn by: Checked: Scale:
TS WD 1:100 @ A3

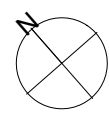
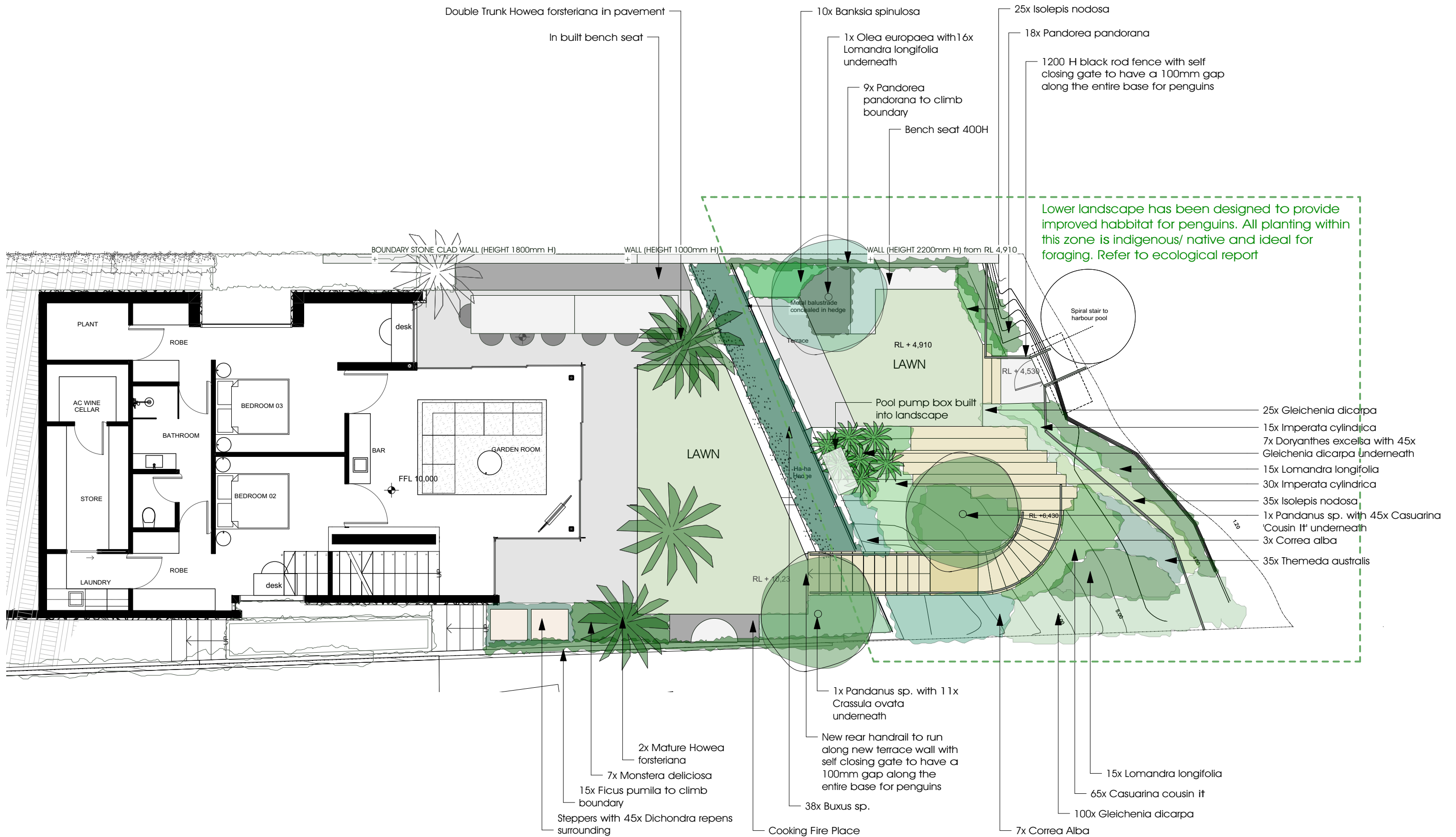
Issue: Revision: Date:
01 E 28.01.2021

Landscape Design Sydney Tel: (02) 9316 9044
53 Cranbrook St Fax: (02) 9316 9055
Botany NSW 2019

Figure dimensions shall take precedence over scale. Contractors must verify all dimensions on job before commencing any work or making shop drawings. This drawing is protected by copyright.



DANGAR
BARIN
SMITH



Project:
16 Addison Road, Manly

Client:
Joyce

Dwg no:
LP03-D4819

Title:
Landscape Plan
Lower Ground

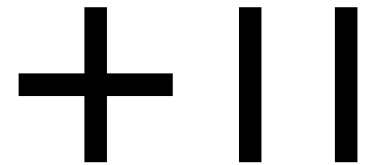
Drawn by: TS
Checked: WD
Scale: 1:100 @ A3

Issue: 01
Revision: E
Date: 28.01.2021

Landscape Design Sydney
53 Cranbrook St
Botany NSW 2019

Tel: (02) 9316 9044
Fax: (02) 9316 9055

Figure dimensions shall take precedence over scale. Contractors must verify all dimensions on job before commencing any work or making shop drawings. This drawing is protected by copyright.



**DANGAR
BARIN
SMITH**