

Your Guide of Getting There



Walking

We are located at approximately 1.3 km away from Warringah Mall. It would take you about 15 minutes on foot if you prefer to warm up your body before some intensive axe throwing action



Trains

Train Service is not available in the area

Check your trip planning Apps or TfNSW website for alternative way of travel by public transport



Buses

A bus stop is located on the opposite side of Winbourne Road near KMA Brookvale. You can take bus 177, 177x and 176x

Bus 177x and 176x runs in peak hours from CBD to us. Bus 177 is a local bus route provides connection between Dee Why and Warringah Mall

Check your trip planning app and TfNSW website for more info

KISS MY AXE Brookvale



9am – 11pm, Mon – Sat
9am – 10pm, Sunday



40 Winbourne Road, Brookvale 2100



hello@kissmyaxe.com.au



1300 MY AXES

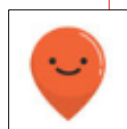
Trip Planning Apps



TripView Available in Apple and Google App Stores



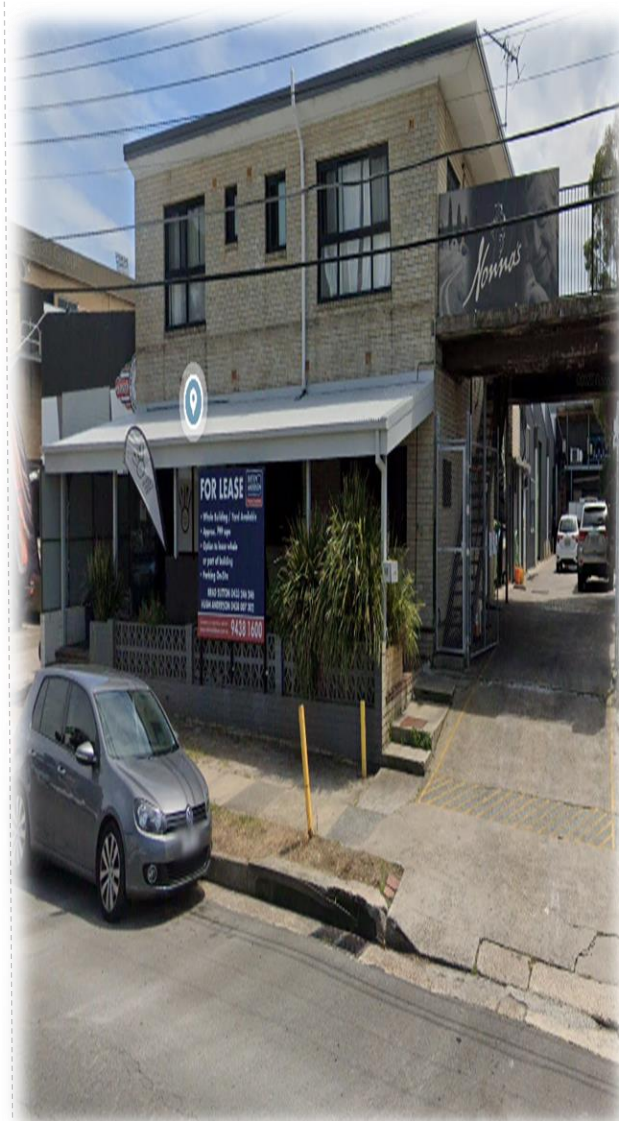
Opal Travel Available in Apple and Google App Stores



Moovit Available in Apple and Google App Stores



Transport Access Guide



Your Guide of Getting There



Parking

4 designated parking spaces are available on site and requires booking in advance. Customers can also park their cars on Winbourne Road. Parking is not subjected to time restriction and no payments needed.



Taxi & Uber

Taxi and Uber & Other ride sharing services are available! Ask out staff if you need help to call a taxi



Cycling

Beware of your safety if you decide to ride your bike. Winbourne Road is not serviced with on road bicycle lane.

To North Shore

To North Beaches

To CBD

