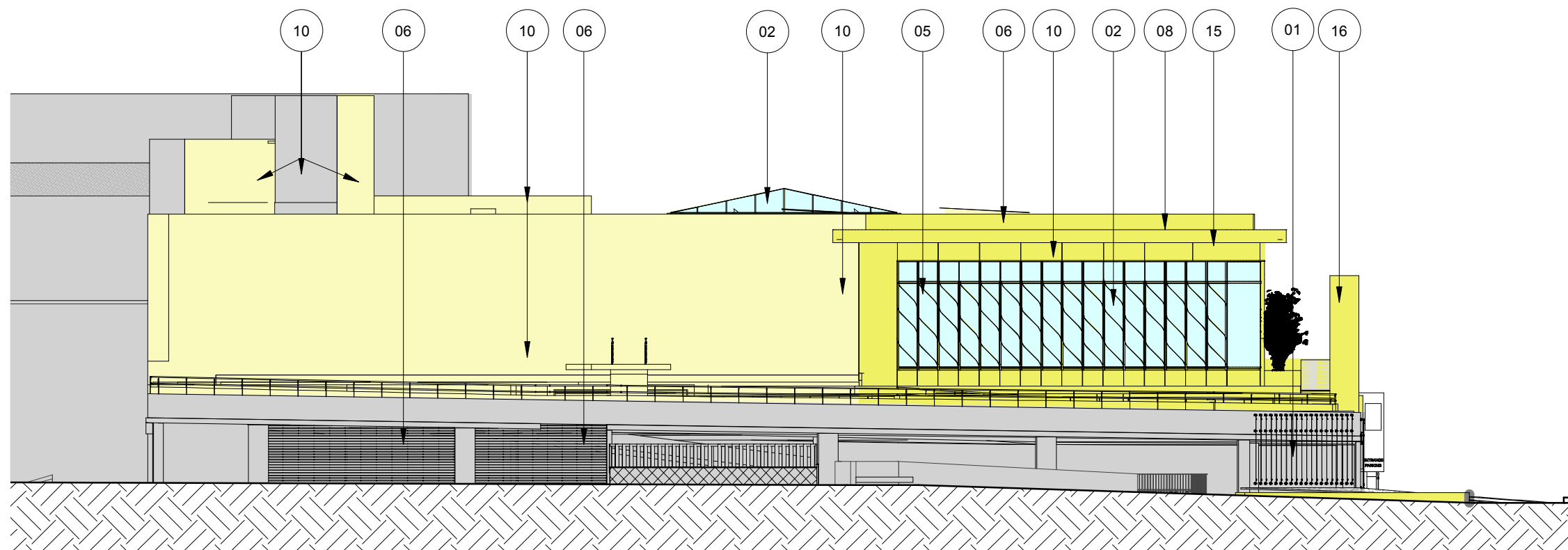
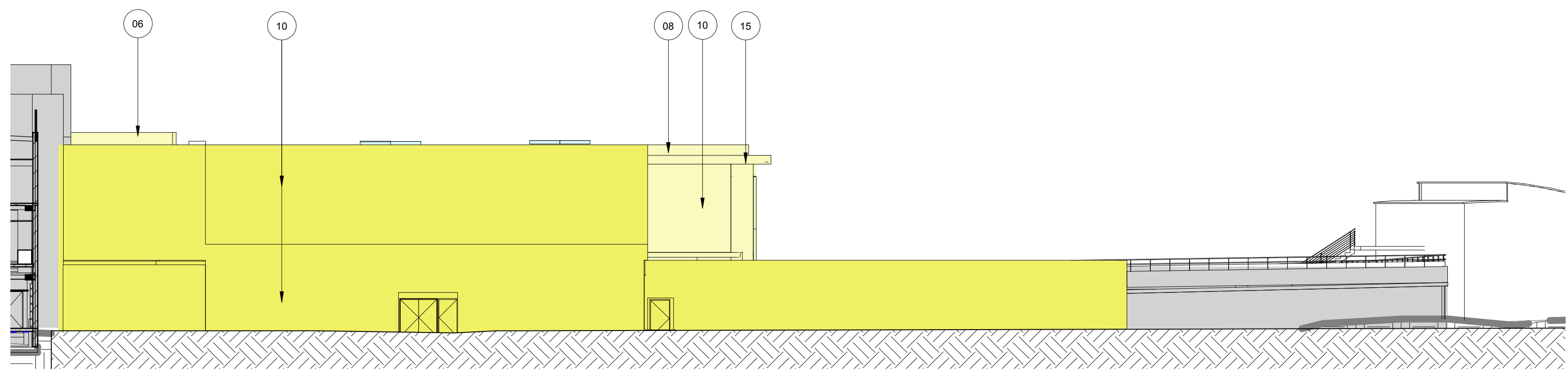


1 EAST ELEVATION
Scale: 1 : 200



2 SOUTH ELEVATION
Scale: 1 : 200



3 WEST ELEVATION
Scale: 1 : 200

ISSUE	DATE	DESCRIPTION
1	17.03.2017	ISSUED FOR DEVELOPMENT APPLICATION
2	02.03.2018	PRELIMINARY SECTION 96

CHANGES FOR SECTION 96 APPROVAL

- roof
1. RELOCATED OPEN PLANTROOM AT THE ROOF LEVEL
 2. MODIFIED ROOF OPENING ABOVE MAIN ENTRANCE
 3. MODIFIED CENTRAL SKYLIGHT (REDUCED HEIGHT, MODIFIED PITCH)
 4. MODIFIED COURTYARD: TWO OPEN COURTYARDS AND ONE SKYLIGHT COVERED AREA INSTEAD OF ONE LARGE GLASS ROOF. REDUCED HEIGHT AND PITCH
 5. MODIFIED SMOKING TERRACE: ROOF OPENING, SIZE AND PLANTED AREA. AREA REDUCED BY 33m²
 6. REDUCED NUMBER OF ROOF SKYLIGHTS ABOVE ASIAN RESTAURANT. 2 INSTEAD OF 6 TO SUIT THE NEW INTERNAL LAYOUT
 7. MODIFIED EXIT STAIR: POSITION, CONFIGURATION, METAL ROOF NO LONGER REQUIRED
 8. CONCRETE ROOF INSTEAD OF METAL DECK ROOF FOR THE MAJORITY OF THE BUILDING EXTENSION
 9. NO SLAB ABOVE THE EXPOSED CAR PARK LEVEL 2 IN THE SOUTH AREA
 10. NEW ACOUSTIC METAL ROOF ABOVE REVISED LOADING DOCK

- facade
11. MODIFIED FACADE APPEARANCE DUE TO CHANGES IN THE CAR PARK LEVELS, LOADING DOCK AND EGRESS STAIRS
 12. REMOVED LOUVRES ON THE BACK FACADE (WESTERN FACADE) DUE TO MECHANICAL RISER NO LONGER REQUIRED / REVISED LOCATION FOR EGRESS DOORS
 13. 2m WIDE INTERNAL EGRESS STAIR MODIFIED INTO TWO 1m WIDE EXTERNAL STAIRS WITH DECORATIVE BALUSTRADES
 14. EXTENT OF LEVEL 2 (MAIN TRADING LEVEL) REDUCED BY 8326mm FROM THE SOUTHERN BOUNDARY AND INCREASED BY 1100mm TO THE EASTERN BOUNDARY
 15. MODIFIED FACADE CURTAIN WALL MULLION BLADES
 16. CONCRETE BLADE WALL REDUCED BY 1.47m IN HEIGHT AND 6.2m IN LENGTH
 17. VERTICAL FINS REMOVED FROM BACK WALL (WESTERN FACADE)

- ground/landscape/floor plate
18. REVISED LOADING DOCK ENTRANCE AND LOCATION/ ENLARGED DEMOLISHED AREA IN THE EXISTING RETAINED SOUTHERN CAR PARK
 19. NEW / MODIFIED EGRESS PATHS FROM EXISTING CARPARK LEVEL -1. NEW CARPARK LEVEL 1.
 20. RELOCATED ELECTRICAL SUBSTATION / LANDSCAPED AREA MOVED TO SUIT
 21. MEDIAN STRIP ADDED AT ENTRY TO PROVIDE PLACE OF REFUGE AND ENSURE WIDTH OF ENTRY/ EXIT IS LESS THAN 9M AS PER DA CONDITION 23
 22. RELOCATED STORMWATER OVERFLOW PATH
 23. EXTENT OF BASEMENT CAR PARK LEVELS REDUCED. BASEMENT REDUCED BY 14394mm FROM THE WEST BOUNDARY. BASEMENT ENLARGED BY 280mm TOWARDS THE SOUTH BOUNDARY. CARPARK CHANGED FROM FLAT PLATE TO SPLIT LEVEL ON ALL LEVELS. DEPTH OF CAR PARK INCREASED FROM RL - 3.600 TO RL - 5.700. OVERALL PARKING SPACES REDUCED FROM 687 TO 680
 24. BASEMENT CAR PARK LEVEL -5 ADDED.
 25. CAR PARK ENTRY / EXIT MOVED TOWARD NORTH BY 3044mm
 26. PLANTER MODIFIED ON THE BACK (WESTERN) FACADE DUE TO REDUCTION OF THE MAIN TRADING FLOOR SLAB
 27. LOCATION OF AIR INTAKE MODIFIED
 28. EXTENT OF RESTAURANT REDUCED BY 135m²
 29. CLUB ENTRANCE ACCESSIBLE RAMPS MODIFIED
 30. ONE ADDITIONAL EXISTING CAR PARK SPACE TO BE REMOVED FROM EXISTING NORTHERN CAR PARK.
 31. SOLID MASONRY WALL ADDED BETWEEN EXISTING ZONE D CAR PARK AND LOADING DOCK ACCESS.

- NEW CLUB AND CAR PARK
- ALTERATIONS TO EXISTING CLUB AND CAR PARK
- NO NEW WORKS TO EXISTING CLUB

CLIENT:
DEE WHY RSL CLUB

PROJECT:
STAGE 5 - CLUB EXTENSION

ARCHITECT:
ALTIS
architecture
p 61 2 9364 9000 f 61 2 9571 7930 lower deck jones bay wharf
suite 123 / 26 - 32 pirrama road pymont nsw 2009 australia

FINISHES AND MATERIALS
SCHEDULE

NOTES:
Nominated architect: Rofe Latimer - 5535
Copyright remains the property of Altis Architecture Pty Ltd.
Use only figured dimensions.
All discrepancies to be referred to Altis Architecture Pty Ltd prior to construction.
Ensure compliance with the Building Code of Australia and all relevant Australian Standards and Authority requirements.

SCALE:	DATE:
As indicated @ B1	MARCH 2018
DRAWN BY: MC	CHECKED BY: DOC
PROJECT NO: 2341.06	DRAWING NO: DA-9000
CAD FILE:	ISSUE: 2

SECTION 96

10/3/2018 4:36:20 PM