



North Avalon Road

EXISTING TREE SCHEDULE

REFER TO ARBORISTS REPORT BY: RainTree Consulting - June 2019

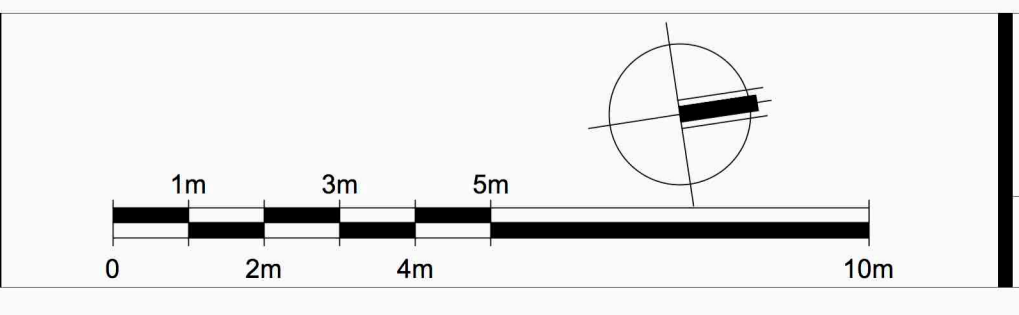
No	Botanical Name	Common Name	Hgt/Sp	DBH	SRZ	TPZ	Condition	Status	
1	Casuarina glauca	She Oak	16 x 11	650	2800	7.8	Fair/Poor	retained	
2	Casuarina glauca	She Oak	20 x 13	550	27	6.6	Good	retained	
3	Casuarina glauca	She Oak	6 x 2	100	c	2	Good	retained	
4	Jacaranda mimosaefolia	Jacaranda	9 x 700at base	2	3.6	Good	retained	REMOVE	
5	Eucalyptus Botryoides	Southern Mahogany	6 x 4	200	1.8	2.4	Fair/Good	retained	
6	Casuarina glauca	She Oak	5 x 3	av 100	1.5	2	Fair	retained	
7	Bauhinia sp	Bauhinia	9 x 1150at base	2.4	5.4	Fair/Good	REMOVE	RELOCATE	
8	Hibiscus sp	Hibiscus	3 x 650at base	1.5	2	Fair/Good	REMOVE	RELOCATE	
9	Casuarina glauca	She Oak	23 x 14	550, 350	3.1	10.8	Fair/Good	REMOVE	RELOCATE
10	Eucalyptus rostrata	Swamp Mahogany	16 x 11	350	2.3	4.2	Fair	REMOVE	
11	Corymbia diorifera	Lemon Scented Gum	23 x 18	700	2.8	8.4	Good	retained	
12	Phoenix canariensis	Phoenix Palm	4 x 8	1000	-	5	Good	retained	
13	Cupressus leylandii	Leyland Gm Cypress	7 x 4	150, 200	2.1	4.2	Fair	retained	
14	Casuarina glauca	She Oak	15 x 5	300	2100	3.6	Fair/Good	REMOVE	
15	Casuarina glauca	She Oak	24 x 11	350	2.3	4.2	Good	REMOVE	
16	Livistona australis	Cabbage Palm	4 x 5	400	-	3.5	Good	RELOCATE	
17	Corymbia maculata	Spotted Gum	20 x 22	750	2.8	9	Fair/Poor	REMOVE	
18	Melaleuca quinquenervia	Paperbark	5 x 3	100, 100	1.6	2.4	Fair/Good	REMOVE	
19	Melaleuca quinquenervia	Paperbark	4 x 2.5	100	1.5	2	Good	REMOVE	
20	Argophora costata	Argophora	6 x 5	150	1.8	2	Good	retained	
21	Eucalyptus sp	Eucalyptus sp	6 x 4	450at base	1.5	2	Good	retained	
22	Gordonia axillaris	Gordonia	4 x 6	600at base	2	3.6	Fair/Good	retained	
23	Leptospermum petersonii	Lemon sc Tea Tree	5 x 4	500at base	1.8	3	Fair	retained	
24	Grevillea sp	Grevillea sp	4 x 5	600at base	2	3.6	Fair/Good	retained	
25	Eucalyptus rostrata	Swamp Mahogany	17 x 15	650	2.8	7.8	Fair/Poor	REMOVE	
26	Macadamia integrifolia	Macadamia	6 x 550at base	1.8	3	Good	REMOVE	RELOCATE	
27	Melaleuca quinquenervia	Paperbark	13 x 3	250	2	3	Fair/Good	REMOVE	
28	Grevillea rostrata	She Oak	24 x 8	400	2.4	4.8	Good	REMOVE	
29	Casuarina glauca	She Oak	22 x 15	450, 450	3.1	10.8	Fair	REMOVE	
30	Syzygium smithii	Lilly pilli	5 x 7	200	1.8	2.4	Good	retained	
31	Neium oleander	Oleander	11 x 1100at base	3.6	14.4	Fair/Good	REMOVE	RELOCATE	
32	Lagerstromia indica	Crepe Myrtle	9 x 1050at base	3	10.2	Fair/Good	REMOVE	RELOCATE	
33	Schefflera actinophylla	Umbrella Tree	12 x 1000at base	2.8	7.8	Fair/Good	REMOVE	RELOCATE	
34	Howea forsteriana	Kentia Palm (clump)	2 x 1.5	100	-	2	Good	REMOVE	
35	Olea europaea ssp cuspid	Almond Olive	7 x 5	200	1.8	2.4	Good	REMOVE	
36	Archonophoenix cunningh	Banango Palm	7 x 3	av 200	-	2500	Good	REMOVE	
37	Liquidambar styraciflua	Liquidambar	21 x 23	1000	3.3	12	Fair/Poor	REMOVE	
38	Ficus lyrata	Fiddle Leaf Fig	6 x 4	200	1.8	2.4	Fair/Good	REMOVE	
39	Callistemon viminalis	Bottle Brush	3 x 2000at base	1.5	2	Fair/Good	REMOVE	RELOCATE	
40	Eucalyptus Botryoides	Southern Mahogany	14 x 12	450	2.5	5.4	Fair	REMOVE	
41	Musa sp.	Banana Trees	4 x 3	av 150	-	2	Good	REMOVE	
42	Hibiscus sp	Hibiscus	5 x 550at base	2.6	6.6	Fair/Good	REMOVE	RELOCATE	
43	Lagerstromia indica	Crepe Myrtle	8 x 650at base	2.6	6.6	Fair/Good	REMOVE	RELOCATE	
44	Lagerstromia indica	Crepe Myrtle	8 x 650at base	2.6	6.6	Fair/Good	REMOVE	RELOCATE	
45	Lagerstromia indica	Crepe Myrtle	7 x 750at base	2.6	6.6	Fair/Good	REMOVE	RELOCATE	
46	DEAD TREE	DEAD TREE	9 x 2	200	1.6	-	-	REMOVE	
47	Morus sp	Mulberry	7 x 7	400	2.4	4.8	Fair/Poor	REMOVE	
48	DEAD TREE	DEAD TREE	5 x 0	200	1.8	-	-	REMOVE	
49	Glochidion ferdinandii	Chelsea Tree	14 x 14	800	3000	9.6	Fair	REMOVE	
50	Eucalyptus rostrata	Swamp Mahogany	23 x 17	750	3	9	Fair	retained	
51	Morus sp	Mulberry	6 x 11	500at base	2.6	6.6	Fair	REMOVE	
52	Glochidion ferdinandii	Chelsea Tree	6 x 5	50, 200	2.1	4.2	Fair	REMOVE	
53	Eucalyptus rostrata	Swamp Mahogany	12 x 11	350	2.3	4.2	Good	REMOVE	
54	Corymbia maculata	Spotted Gum	9 x 8	450	2.5	5.4	Fair/Poor	REMOVE	
55	Eucalyptus Botryoides	Southern Mahogany	15 x 11	350	2.3	4.2	Fair/Good	REMOVE	
56	Lophoslemon confertus	Old Bush Box	16 x 8	300	2.1	3.6	Good	REMOVE	
57	Brachyctenon acerifolius	Illawarra Flame Tree	8 x 6	350	2.3	4.2	Good	REMOVE	
58	Eucalyptus microcorys	Tallowwood	18 x 16	600	2.7	7.2	Fair	REMOVE	
59	Schefflera actinophylla	Umbrella Tree	10 x 9	multi 550	2.6	6.6	Fair/Good	REMOVE	

revision	description	date
F	DA ISSUE	26-09-2019
E	COORDINATION ISSUE	23-09-2019
D	COORDINATION ISSUE	13-09-2019
C	COORDINATION ISSUE	26-06-2019
B	COORDINATION ISSUE	20-06-2019
A	PRELIMINARY ISSUE	14-06-2019

client: **ARMADA AVALON PTY LTD**

architect: **environa studio**
 224 Riley Street
 surry hills 2010
 t: 02 9211 0000
 e: info@environastudio.com.au
 architects registration : 6239

landscape architect: **JOHN LOCK & associates**
 LANDSCAPE ARCHITECTURE
 Suite 4, 211 Ben Boyd Road, Neutral Bay NSW 2099
 p: 02 9969 9866 e: landscape@bigpond.com



project: **Seniors Living
 27-29 NORTH AVALON ROAD
 Avalon Beach**

scale: 1:100 @ A1
 1:200 @ A3

date: 03-05-2019

dwg no: **2604 LP-00**

EXISTING TREE PLAN

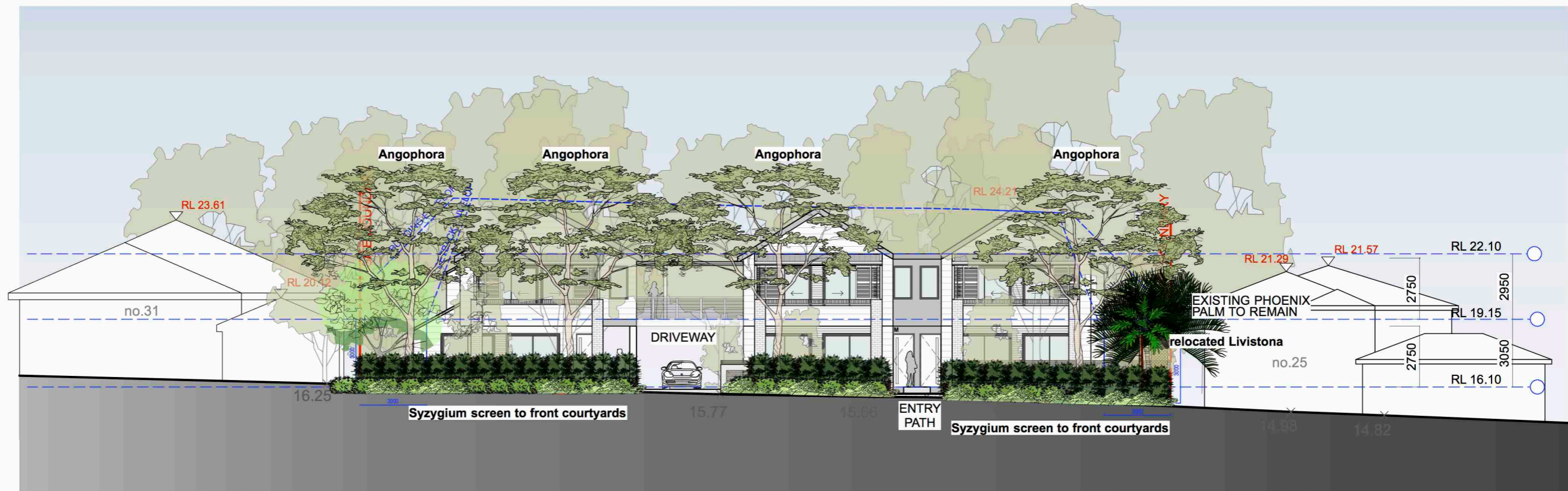


KEY

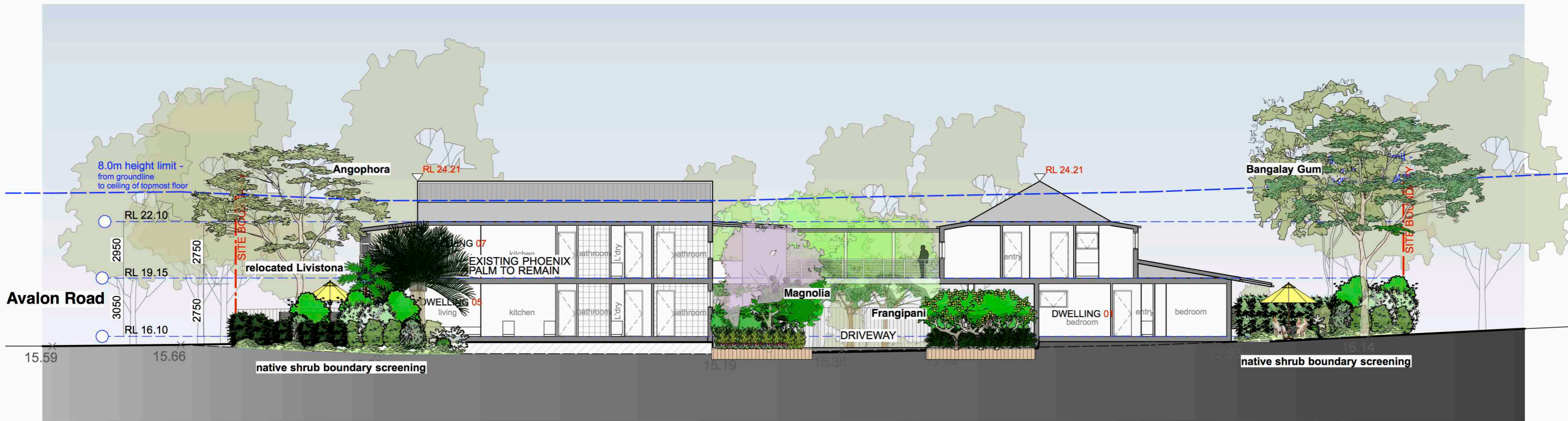
- EXISTING TREES TO BE RETAINED
- EXISTING TREES TO BE REMOVED
- NEW TREES
- PALMS
- SHRUBS
- GROUNDCOVERS
- TURF
- POTS + FURNITURE
- NEW PAVING
- GRAVEL
- STEPPING STONES
- CONCRETE PATH

PLANT SCHEDULE

Botanical Name	Common Name	Sq	Hgt	Qty	Size
Trees					
Angophora costata	Sydney Red Gum	15m	4	100L	
Backhousia citrifolia	Lemon Scented Myrtle	8m	4	100L	
Ceratopetalum dummicarpum	NSW Christmas Bush	5m	4	100L	
Eucalyptus tereticornis	Bergamot Gum	20m	2	100L	
Glochidion ferndani	Cheese Tree	8m	2	100L	
Magnolia soulangeana "Satisfaction"	"Satisfaction" Magnolia	6m	3	100L	
Macropodium	Macropodium	6m	1	100L	
Stanadard Tulia	Frangipani	4m	3	200L	
Shrubs					
Acmena "Forest Flame"	"Forest Flame"	1.5m	2m	200mm	
Banksia spinulosa var. spinulosa	"Birthday Candles"	1.5m	1m	200mm	
Callistemon "Better John"		1.5m	1m	200mm	
Callistemon linearis	Narrow leaved bottlebrush	1.5m	2m	200mm	
Callistemon "Wildfire"	Red Bottlebrush	1.5m	1m	200mm	
Camellia "Early Pearly"	Camellia	1.5m	2m	300mm	
Casuarina glauca "Cousin II"	"Cousin II"	1.5m	1m	200mm	
Cyathea	Tree Fern	1.5m	1m	35L	
Ctenanthe	Ctenanthe	1.5m	0.75m	140mm	
Ocotea revoluta	Cycad	1.5m	1m	200mm	
Dodonaea triquetra	Hop Bush	1.5m	1m	200mm	
Eriostemon myoporoides	Wax flower	1.5m	1m	200mm	
Gardenia florida "Professor Pucci"	Gardenia	1.5m	1.5m	140mm	
Grevillea sericea	Pink Solder Flower	1.5m	2m	200mm	
Hibbertia linearis	Showy Guinea Flower	1.5m	1.5m	140mm	
Indiopera australis	Australian Indigo	2m	2m	200mm	
Leptospermum polygalifolium	Lemon Scented Tea Tree	1.5m	2m	200mm	
Leucopogon juniperinus	Leucopogon	1.5m	2m	200mm	
Macrozamia communis	Burrawang Palm	1m	2m	300mm	
Melaleuca hypericifolia	Paperbark	1m	3m	200mm	
Narrow-leaved Gumbud	Narrow-leaved Gumbud	1.5m	0.75m	140mm	
Pittosporum tobira "Miss Muffet"	Pittosporum	1.5m	0.5m	140mm	
Pultanea daphnioides	Large Leaved Bush Pea	1.5m	2m	200mm	
Rhapis excelsa	Lady Palm	1.5m	2m	300mm	
Rosmarinus officinalis "Prostratus"	Creeping rosemary	2m	0.75m	200mm	
Syzygium francisci "Hobbit"	Syzygium	1.5m	0.75m	300mm	
Syzygium "Resilience"	Syzygium	1.5m	0.75m	300mm	
Westringia Winrabie Gem	Lilly Pilly	1.5m	2m	300mm	
Leucopogon juniperinus	Prickly Bread Heath	2m	1m	200mm	
Xanthorrhoea	Grass Tree	1.5m	1m	35L	
Groundcovers					
Adiantum athiopium	Maidenhair Fern	5m	0.5m	140mm	
Aniopsis	Kangaroo Paw	5m	0.75m	140mm	
Arthropodium cirratum	Birds Nest Fern	4m	0.75m	140mm	
Asplenium	Birds Nest Fern	5m	0.75m	200mm	
Blechnum cartilagineum	Soft Water Fern	5m	0.75m	140mm	
Brachycome multifida "Break of Day"	Native Daisy	5m	0.75m	140mm	
Calochlaena dubia	Rainbow Fern	5m	0.75m	125mm	
Ctenanthe	Ctenanthe	5m	0.5m	140mm	
Dichondra repens	Kidney Weed	5m	0.1m	125mm	
Doodia aspera	Rasp Fern	5m	0.5m	140mm	
Grevillea "Cherry Ripe"	Grevillea	5m	0.5m	125mm	
Hardenbergia violacea "Meema"	False Sarasaparilla	5m	0.5m	125mm	
Golden Guinea Vine	Golden Guinea Vine	5m	2m	125mm	
Hydrocotyle laxiflora	Pennywort	5m	2m	125mm	
Lomandra "Bankia"	Tanika	5m	0.75m	125mm	
Lomandra longifolia	Vattie Matrush	5m	1m	125mm	
Pratia purpurascens	White root	6m	0.1m	125mm	
Scaevola humilis "Purple Fusion"	Fan Flower	5m	0.5m	125mm	
Viola hederacea	Native Violet	5m	0.3m	125mm	



1 NORTH ELEVATION
1:200



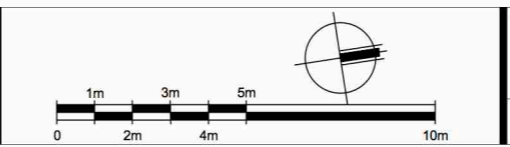
2 SECTION
1:200

revision	description	date
D	DA ISSUE	13-09-2019
C	COORDINATION ISSUE	26-06-2019
B	COORDINATION ISSUE	20-06-2019
A	PRELIMINARY ISSUE	14-06-2019

client:
ARMADA AVALON PTY LTD

architect:
environa studio
224 Riley Street
sunny hills 2010
t: 02 9211 0000
e: info@environastudio.com.au
architects registration : 6239

landscape architect:
JOHN LOCK & associates
LANDSCAPE ARCHITECTURE
jla
Suite 4, 211 Ben Boyd Road, Neutral Bay NSW 2089
p.02 9969 9866 e:landesign@bigpond.com



project:
Seniors Living
27-29 NORTH AVALON ROAD
Avalon Beach
LANDSCAPE ELEVATIONS

scale:
1:100 @ A1
1:200 @ A3
date:
03-05-2019
dwg no:
2604 LP-02

SPECIFICATION NOTES

SITE PREPARATION / SOIL WORKS
ALL EXISTING TREES MARKED FOR RETENTION SHALL BE PROTECTED FOR THE DURATION OF THE BUILDING WORKS. REMOVE FROM SITE ALL PERENNIAL WEEDS SUCH AS OXALIS, ONION WEED AND THE LIKE.

NO REGRADING IS TO BE CARRIED OUT WITHIN THE DRIPLINE OF THE TREES TO BE RETAINED. WHERE EXCAVATION IS NECESSARY USE HAND METHODS TO AVOID DAMAGE TO THE ROOT SYSTEM. DO NOT CUT ROOTS GREATER THAN 50MM. CUT ROOTS CLEANLY WITH A SAW AND DO NOT SEAL THE WOUND.

TREE PROTECTION
PROTECT ALL EXISTING TREES AS NOTED ON THE DRAWINGS FOR THE DURING OF THE BUILDING WORKS.

TAKE ALL NECESSARY PRECAUTIONS, INCLUDING THE FOLLOWING:

Tree Protection fence:
INSTALL A TREE PROTECTION FENCES AT THE MAXIMUM RADIUS ALLOWABLE TO ACCOMMODATE THE PROPOSED DEVELOPMENT. MAINTAIN THE FENCE FOR THE DURATION OF THE BUILDING WORKS.

CONSTRUCT THE FENCE 1.8 M HIGH WITH CHAINWIRE MESH ON STEEL POSTS. ALL AREAS WITHIN THE PERIMETER OF THE FENCE ARE TO BE COVERED TO A DEPTH OF 100MM WITH WOODCHIP MULCH.

Temporary Irrigation:
INSTALL A TEMPORARY IRRIGATION SYSTEM TO ALL TREES TO BE RETAINED. INSTALL DRIP EMITTERS ON POLY LATERALS. THE IRRIGATION SYSTEM IS TO BE CONTROLLED BY A GALCON OR SIMILAR AUTOMATIC CONTROLLER.

Harmful materials:
DO NOT STORE, STOCKPILE, DUMP OR OTHERWISE REPLACE UNDER OR NEAR TREES, BULK MATERIALS AND HARMFUL MATERIALS INCLUDING OIL, PAINT, WASTE CONCRETE, CLEARINGS, BOULDERS AND THE LIKE. DO NOT PLACE SPOIL FROM EXCAVATIONS AGAINST TREE TRUNKS, EVEN FOR SHORT PERIODS. PREVENT WIND-BLOWN MATERIALS SUCH AS CEMENT FROM HARMING TREES AND PLANTS.

Damage:
PREVENT DAMAGE TO TREE BARK. DO NOT ATTACH STAYS, GUYS AND THE LIKE TO TREES.

Work under trees:
DO NOT REMOVE TOPSOIL FROM WITHIN THE DRIPLINE OF TREES UNLESS OTHERWISE SPECIFIED. IF IT IS NECESSARY TO EXCAVATE WITHIN THE DRIPLINE, USE HAND METHODS SUCH THAT ROOT SYSTEMS ARE PRESERVED INTACT AND UNDAMAGED.

Roots:
DO NOT CUT TREE ROOTS EXCEEDING 50 MM DIAMETER UNLESS PERMITTED BY THE SUPERINTENDENT. WHERE IT IS NECESSARY TO CUT TREE ROOTS, USE A CHAIN SAW OR SIMILAR MEANS SUCH THAT THE CUTTING DOES NOT UNDULY DISTURB OR ROCK THE REMAINING ROOT SYSTEM. IMMEDIATELY AFTER CUTTING, APPLY AN APPROVED BITUMINOUS FUNGICIDAL SEALANT TO THE CUT SURFACE TO PREVENT THE INCURSION OF ROT OR DISEASE.

Compacted Ground:
AVOID COMPACTION OF THE GROUND UNDER TREES. IF THE GROUND UNDER TREES HAS BEEN UNDULY COMPACTED DURING THE WORK UNDER THE CONTRACT, FOR EXAMPLE BY THE OPERATION OF HEAVY CONSTRUCTIONAL PLANT, LOOSEN THE SOIL BY CORING.

SOIL WORKS

Soil Conditioner
"TERRA-COTTEM®" OR ITS EQUIVALENT IS TO BE INCORPORATED INTO THE PLANTING MEDIUM WHEN PLANTING.

Imported Soil
ALL IMPORTED SOIL TO ACHIEVE THE REQUIREMENTS OF AS419 - SOILS FOR LANDSCAPING ALL TREE PLANTING HOLES ARE A MINIMUM 1.5 TIMES DIAMETER AND TWICE THE DEPTH OF THE ROOT BALL ALL MULCH IS TO BE FREE OF DELETERIOUS MATERIAL SUCH AS ROCK, SOIL, WEEDS AND STICKS. ACCEPTABLE MULCH - FOREST LITTER OR PINE BARK MULCH

THOROUGHLY CULTIVATE THE SUBSOIL TO A DEPTH OF 150MM. SUPPLY AND INSTALL THE FOLLOWING SOIL MIXES TO THE SPECIFIED DEPTHS:

SOIL DEPTH	
- TURF	100MM
- PLANTING	300MM
SOIL MIX A	
- BLACK LOAM	60%
- COARSE WASHED RIVER SAND	30%
- ORGANIC MIX /COMPOST	10%
- ORGANIC LAYER 50 MM DEEP	
CULTIVATE A 50MM LAYER OF ORGANIC ADDMIX INTO THE TOP 100MM OF SOIL MIX	
Addmix composition	
- TREATED HARDWOOD SAWDUST	30%
- PINE PARK FINES	40%
- COMPOSTED MANURE	30%
SOIL MIX B	
- SITE TOPSOIL IF AVAILABLE	
OR IMPORTED MIX OF:	
- BLACK LOAM	70%
- COARSE WASHED RIVER SAND	30%

TREE PLANTING AREAS TO BE MOUND 300 MM ABOVE THE EXISTING GROUND LINE TO IMPROVE DRAINAGE FROM PLANTING HOLES. TREE HOLES TO BE EXCAVATED 2 TIMES LARGER THAN THE ROOTBALL AND BACKFILLED WITH SOIL MIX AS SPECIFIED ABOVE.

TURFED AREAS
APPLY SHIRLEYS NO17 LAWN FERTILISER TO SOIL. APPLIED IN ACCORDANCE WITH THE MANUFACTURERS INSTRUCTIONS. TURF SHALL BE:

- Buffalo Sapphire Blue of 30MM.

DO NOT LET TURF DRY OUT. LIGHTLY TOP DRESS TURF 6 WEEKS AFTER LAYING WITH 10MM IMPORTED TOPSOIL THATCH TO BE LAID WITH STAGGERED JOINTS FLUSH WITH PATHWAY LEVELS.

STEEL GARDEN EDGE
FORM BOSS ZAM 100mm STEEL GARDEN EDGE INSTALLED AS PER MANUFACTURERS SPECIFICATION

SUPPLIER:
Reece Irrigation Minchinbury
10 Grex Avenue, Minchinbury, NSW, 2770
Phone: (02) 9675 5822

MULCH
SUPPLY AND PLACE 75 MM LAYER OF HARDWOOD HORTICULTURAL GRADE MULCH, (GRADED IN SIZE 15 MM X 15MM X 15MM, FREE FROM WOOD SLIVERS), SET DOWN 25MM FROM ADJACENT PAVING.

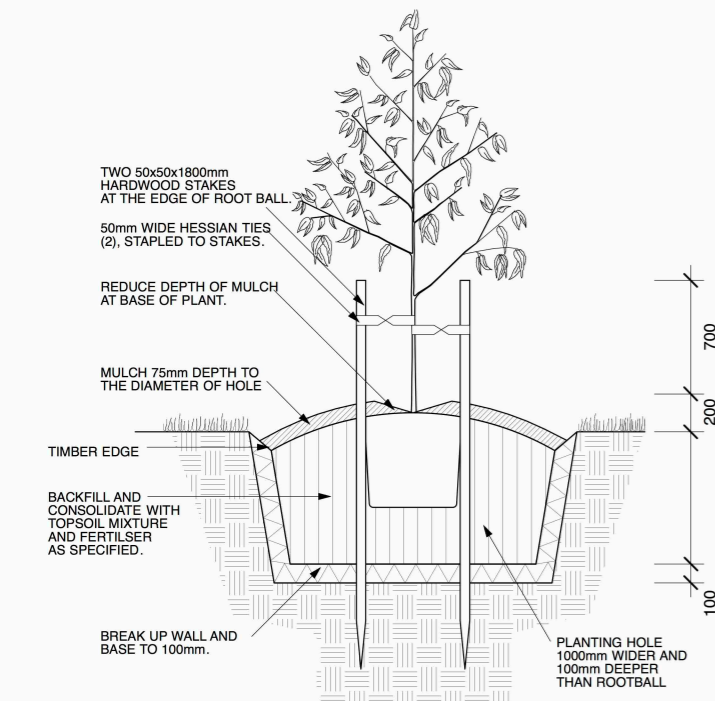
PLANT MATERIALS
ALL PLANTS SHALL BE TRUE TO TYPE, OF HEALTHY GROWTH DISEASE FREE NURSERY STOCK AND NOT DISPLAYING RESTRICTED GROWTH PATTERNS. SHOULD THERE BE A REQUIREMENT FOR SUBSTITUTIONS THEY SHALL NOT CHANGED WITHOUT PRIOR APPROVAL OF THE LANDSCAPE ARCHITECT. NO VARIEGATED STRAIN SHALL BE USED. ALLOW FOR SLOW RELEASE FERTILISER TO ALL PLANTS APPLIED AT THE MANUFACTURERS RECOMMENDED RATE TO BE SAME OR SIMILAR TO OSKOCOTE.

FERTILIZER:
MASS PLANTED AREAS : ALLOW 2 SHIRLEYS SLOW RELEASE KOKOI PELLETS PER 5 - 35 LITRE PLANT AND ONE PER 150MM PLANT TURF AREAS : ALLOW SHELLYS NO.17 LAWN FERTILIZER OR EQUIVALENT, APPLIED IN ACCORDANCE WITH THE MANUFACTURERS INSTRUCTIONS.

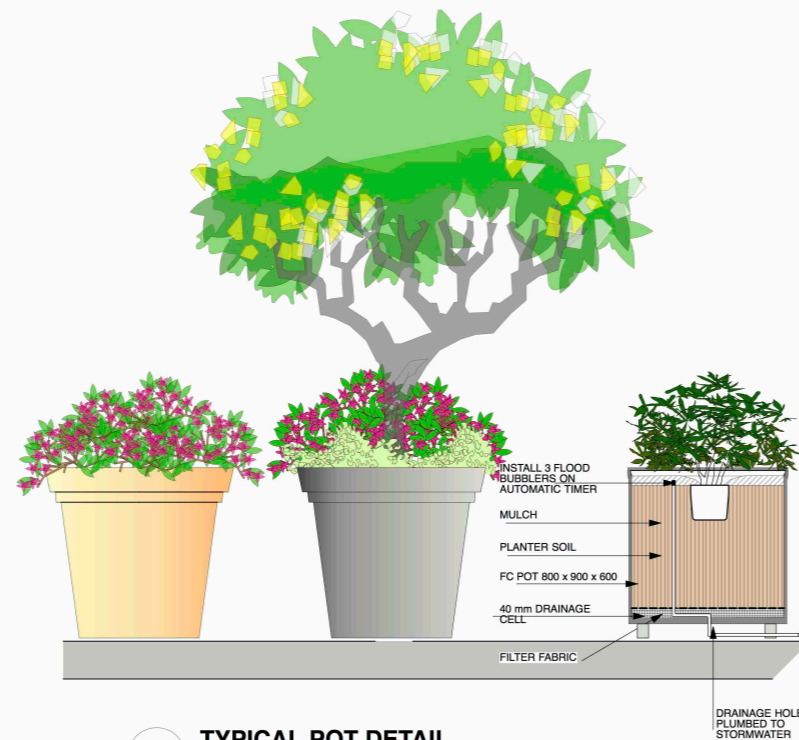
STAKES AND TIES
DURABLE HARDWOOD, STRAIGHT, SIZE SHALL BE 50X50X1800 WITH TIES SPACED APPROXIMATELY 300MM APART. DRIVE STAKES 800MM INTO THE GROUND ON THE WINDWARD SIDE OF THE PLANT. TIES SHALL BE 50MM HESSIAN WEBBING FIXED IN A FIGURE OF EIGHT PATTERN.

PLANT ESTABLISHMENT PERIOD
FROM THE DATE OF PRACTICAL COMPLETION, THERE SHALL BE A PERIOD OF 52 WEEKS FOR THE PLANTING ESTABLISHMENT PERIOD. ANY FAILED PLANTS SHALL BE REPLACED WITH THE SAME TYPE AND SPECIES. THE MULCHED SURFACES SHALL BE MAINTAINED IN A NEAT AND TIDY CONDITION. STAKES AND TIES SHALL BE ADJUSTED AS REQUIRED AND THE TURF SHALL BE REGULARLY MOVED TO MAINTAIN A HEALTHY GROUND COVER. A CONSTANT WATER REGIME SHALL BE MAINTAINED TO ENSURE HEALTHY GROWTH OF ALL PLANT MATERIAL.

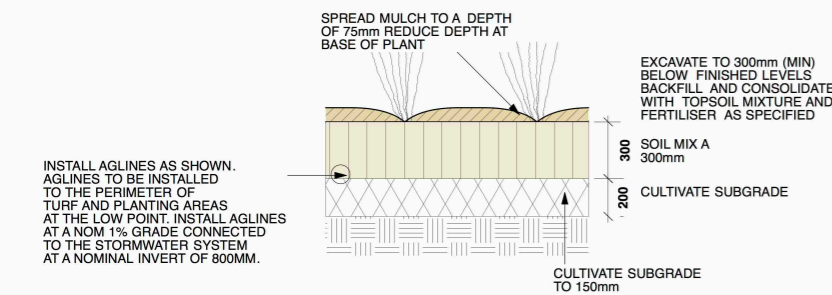
IRRIGATION
ALL PLANTING AREAS TO BE SUPPLIED WITH A FULLY AUTOMATIC IRRIGATION SYSTEM EQUIVALENT TO "NETAFIM". THE IRRIGATION SYSTEM SHALL MEET ALL THE REQUIREMENTS OF THE WATER AND ELECTRICITY SUPPLY AUTHORITY AND RELEVANT AUSTRALIAN STANDARDS. PROVIDE RICHDEL OR SIMILAR APPROVED CONTROLLER. CONNECTION TO SYDNEY WATER MAINS TO BE THROUGH AN APPROVED REDUCED PRESSURE ZONE DEVICE INSTALLED TO WATER REGULATIONS.



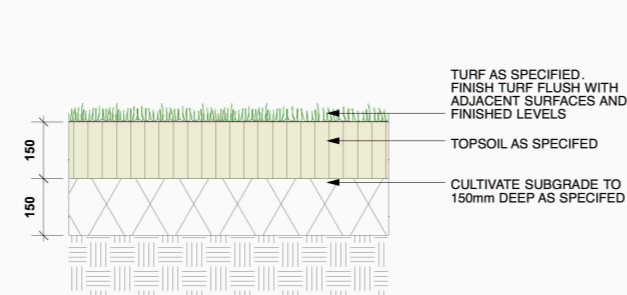
A TREE DETAIL
1:20



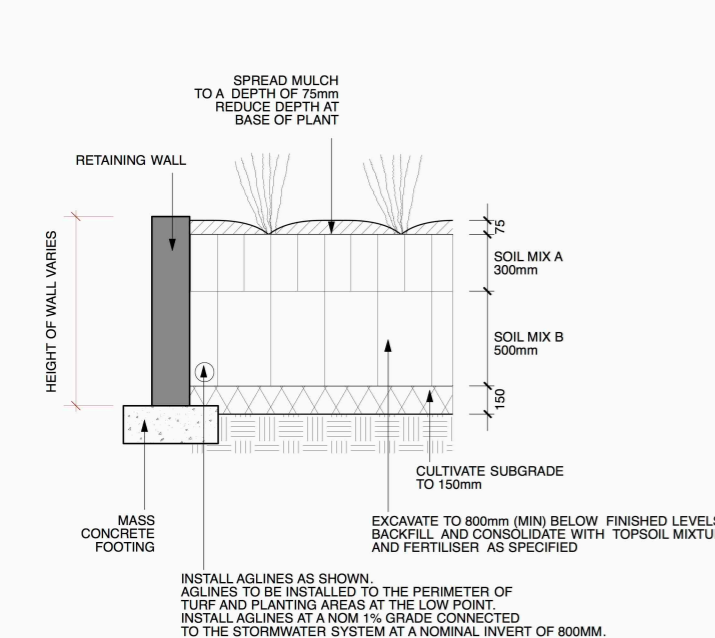
D TYPICAL POT DETAIL
1:20@A1



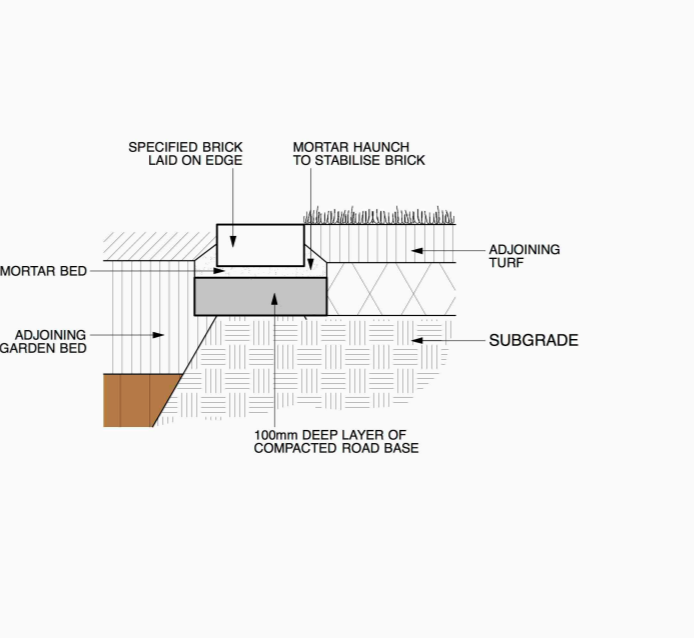
B MASS PLANTING DETAIL
1:20



E TURF DETAIL
1:10



C MASS PLANTING - RETAINING WALL
1:20



F TURF DETAIL
1:10



1 COMMON AREA ROTUNDA

revision	description	date
D	DA ISSUE	13-09-2019
C	COORDINATION ISSUE	26-06-2019
B	COORDINATION ISSUE	20-06-2019
A	PRELIMINARY ISSUE	14-06-2019

client:
ARMADA AVALON PTY LTD

architect:
environa studio
224 Riley Street
surry hills 2010
t: 02 9211 0000
e: info@environastudio.com.au
architects registration - 6239

landscape architect:
JOHN LOCK & associates
LANDSCAPE ARCHITECTURE
Suite 4, 211 Ben Boyd Road, Neutral Bay NSW 2089
p:02 9969 9866 e:landesign@bigpond.com

project:
Seniors Living
27-29 NORTH AVALON ROAD
Avalon Beach

scale: as shown @ A1
50% @ A3

date: 03-05-2019

dwg no: **2604 LP-03**

LANDSCAPE DETAILS