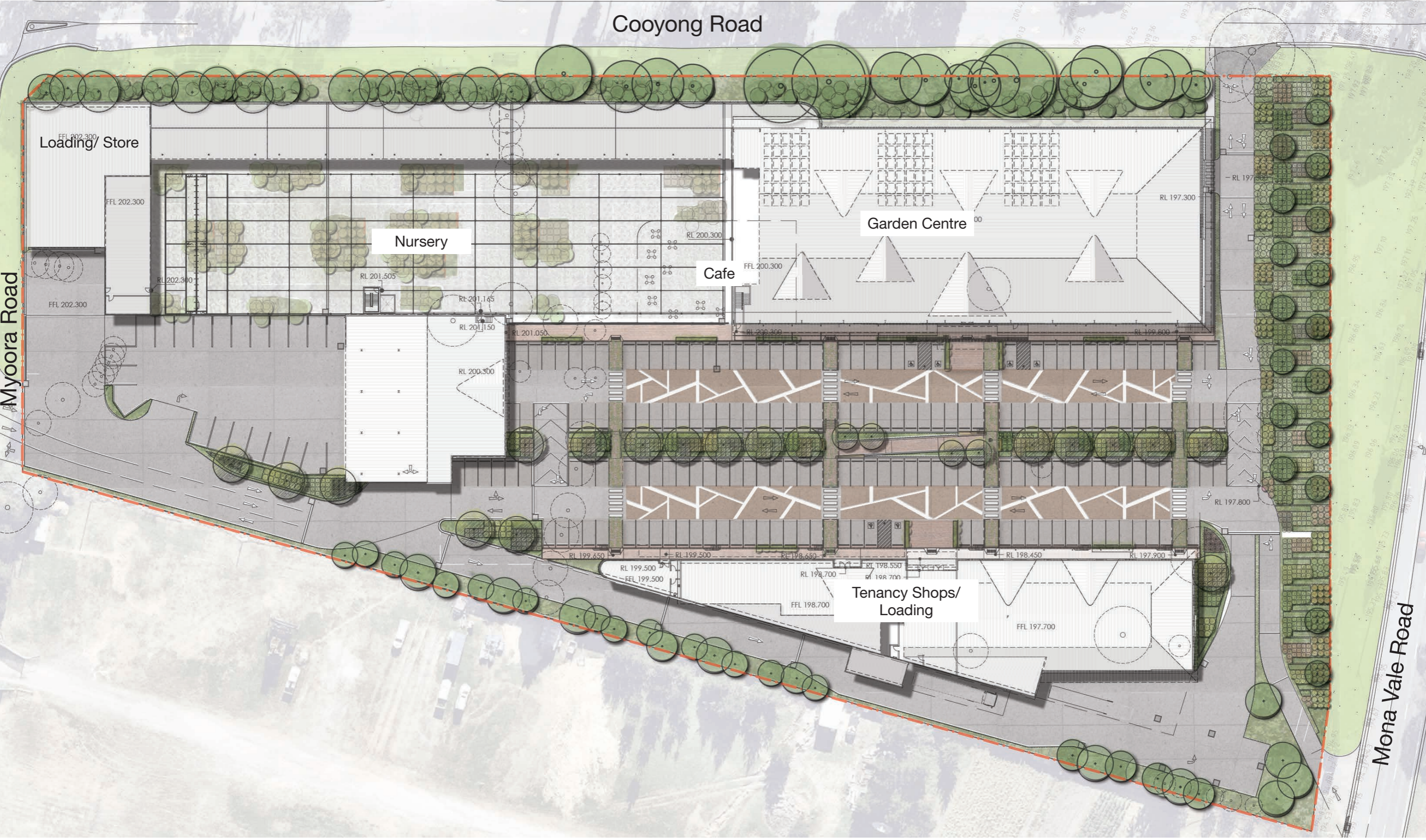


**Flower Power Terrey Hills**  
Landscape Development Application  
March 2022



# Landscape | Site Plan

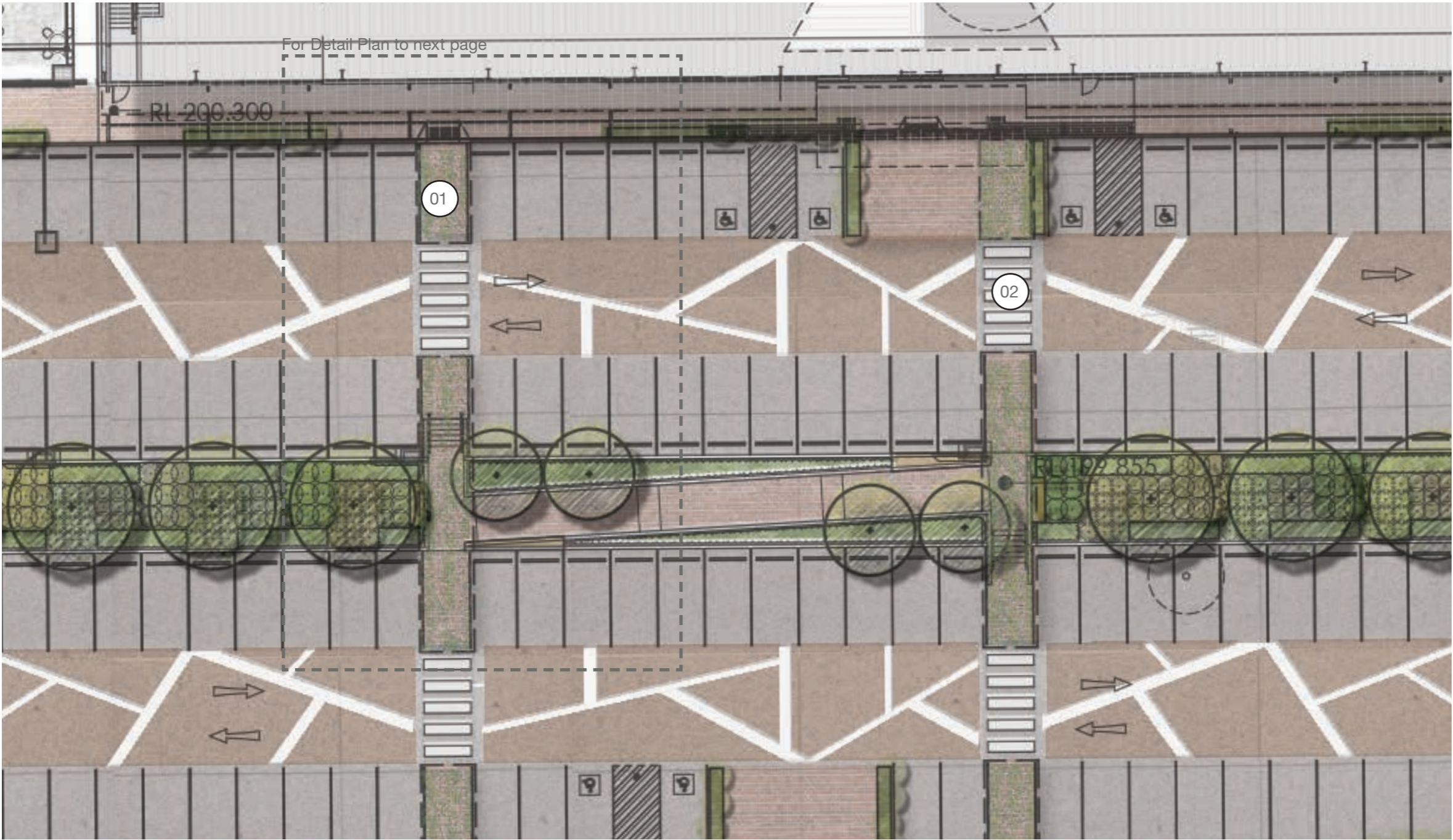
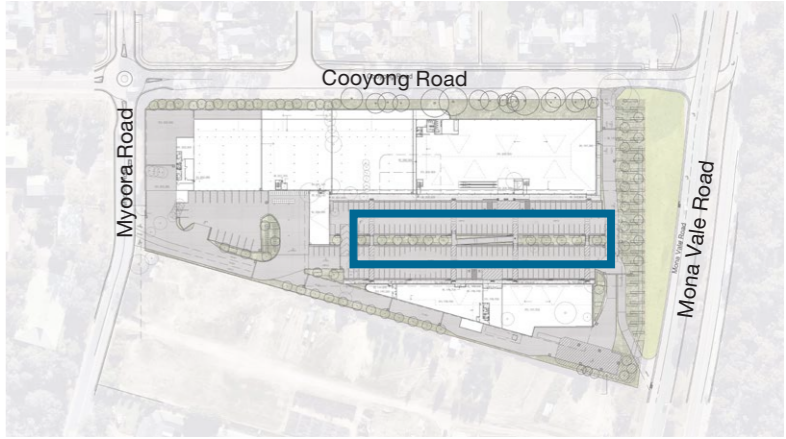




# Landscape | Carpark

The carpark features a central green spine providing generous tree planting for shade across the hardstand area. Understory planting will consist of massed grasses ground covered and shrubs.

Pathways across the carpark dissect this planter with a ramp and stair located centrally for access across the change of level.



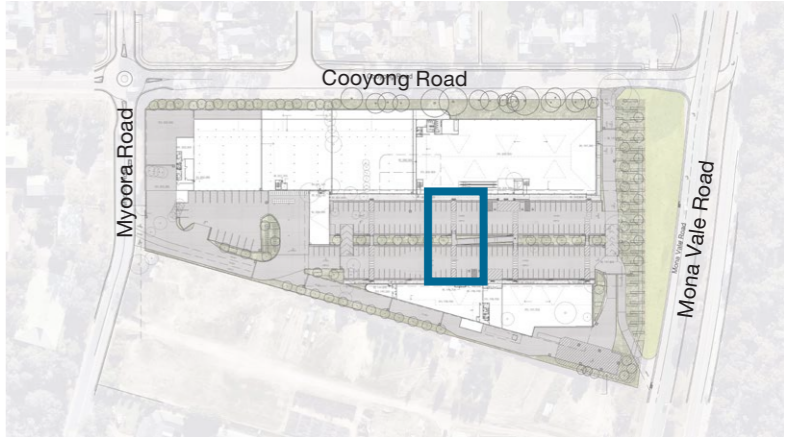
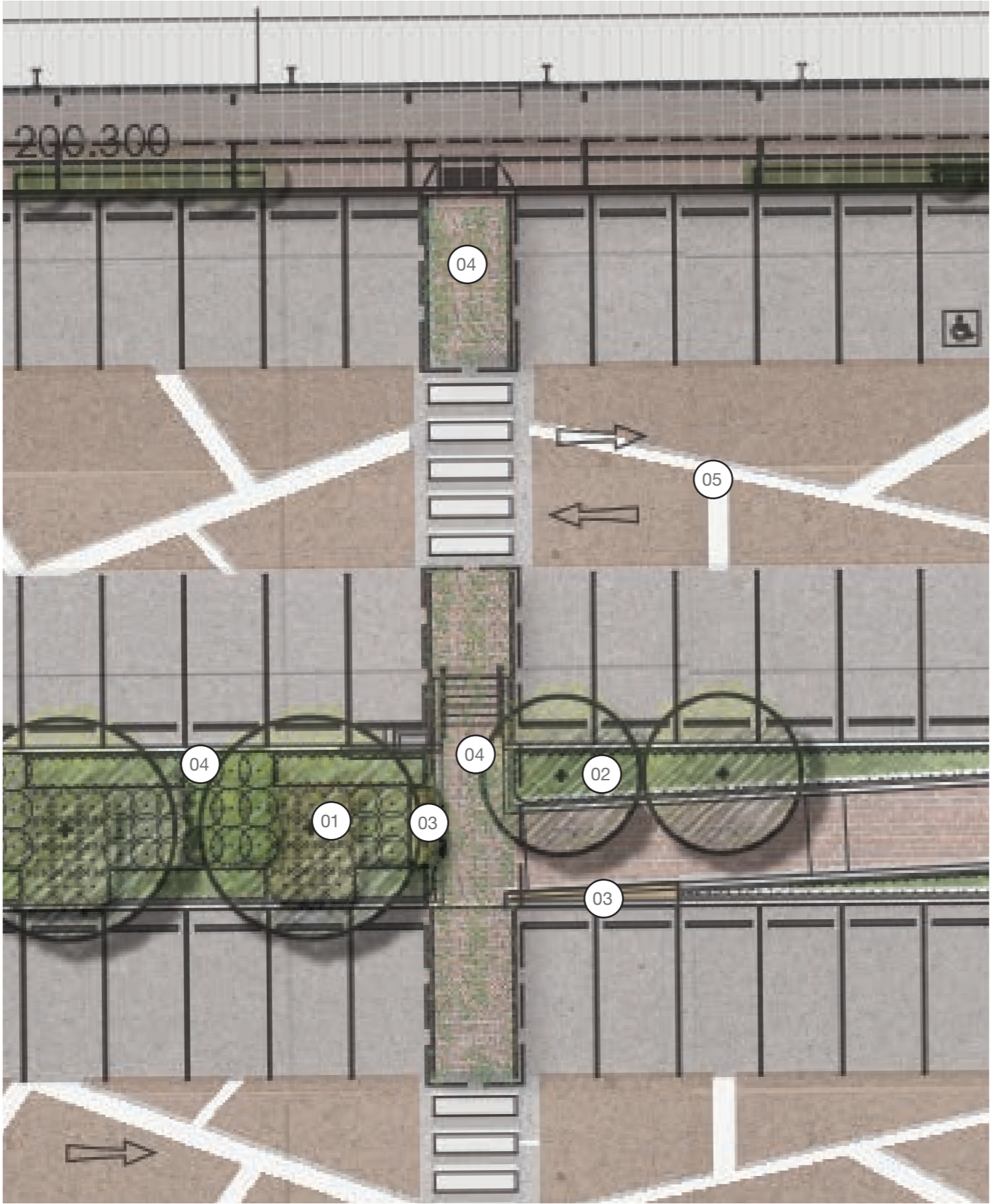
01 Textured surface to pedestrian path



02 Pedestrian spine



# Landscape | Carpark Detail



01 Passive Irrigated gardens



03 Seats in carpark



02 Carpark shade tree planting



04 Pergola with Climbing species



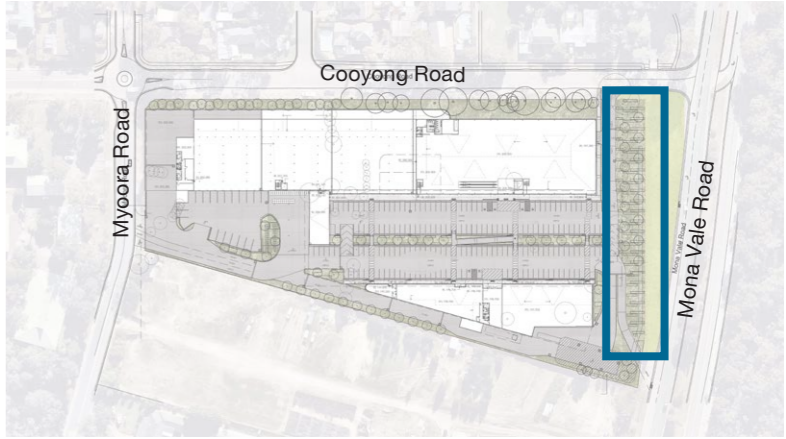
05 Patterned texture



# Landscape | Frontage

*Mona Vale Road*

Along Mona Vale Road a frontage of presentation planting is proposed. Planting will consist of a variety of native and exotic grass groundcover and shrub species in blocks. Tree planting will feature along the length of the frontage.



- 

01 Banding and block planting of native species
- 

02 Banding and block planting of native species
- 

03 Tree planting
- 

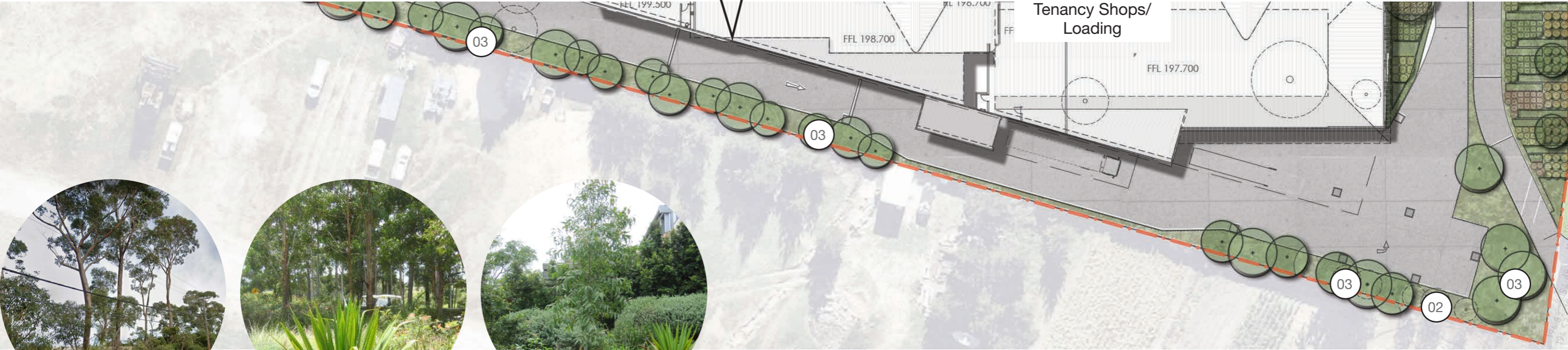
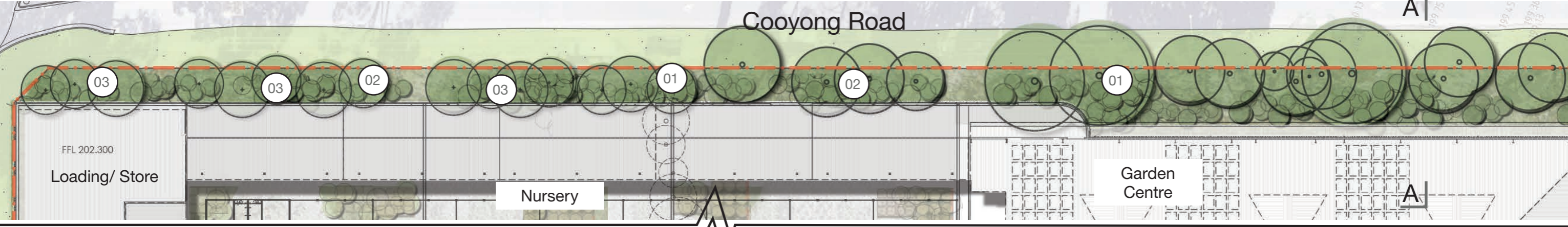
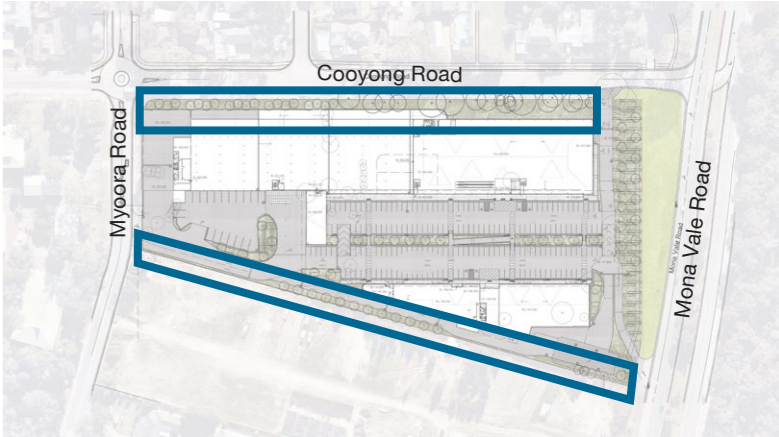
04 Proposed signage



# Landscape | Boundaries

## Cooyong Rd & Southern Boundary

Planting to the boundaries shall complement existing trees. Additional tree planting will soften the frontages with massed grasses groundcover and shrubs to the understory.



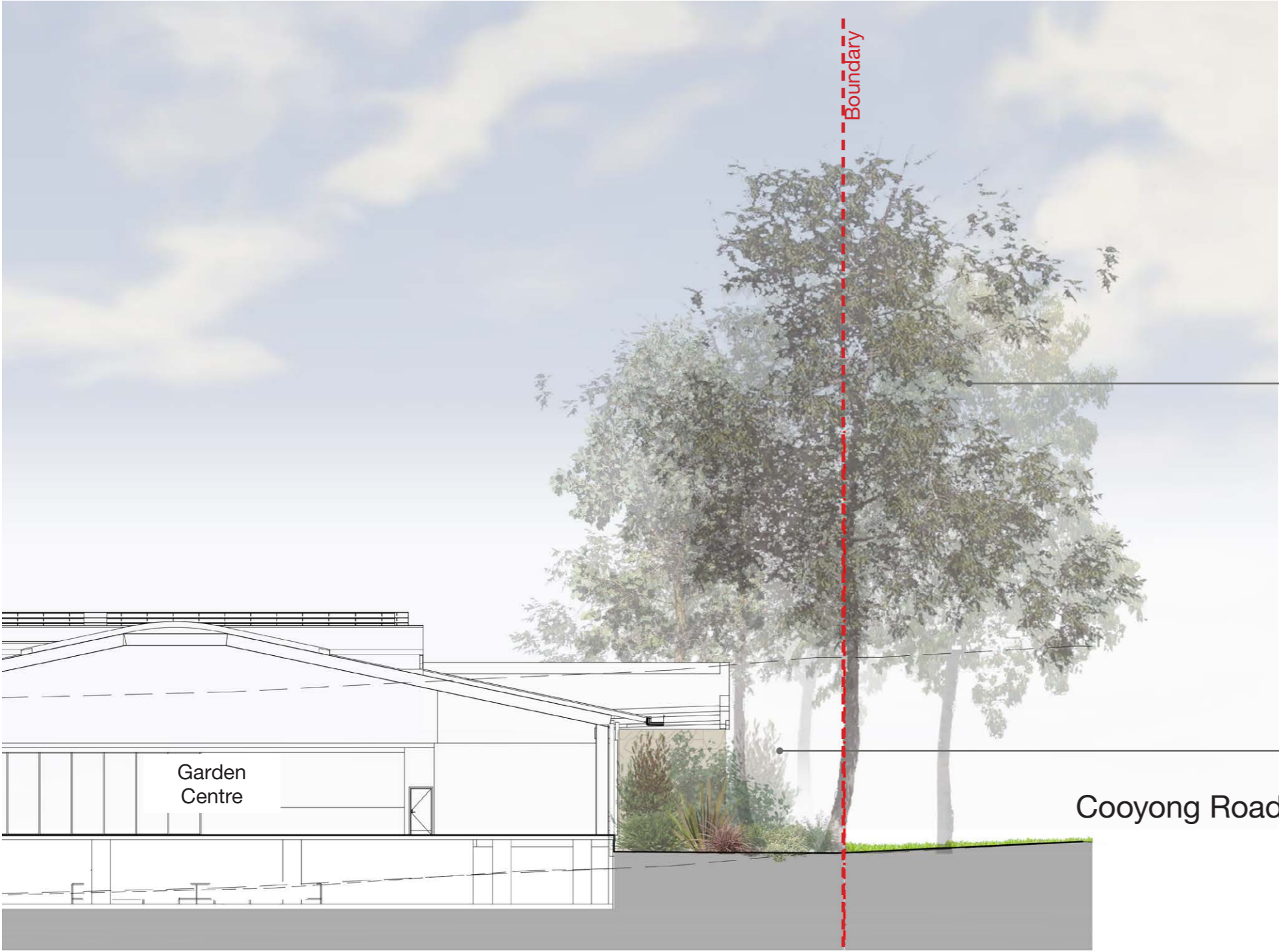
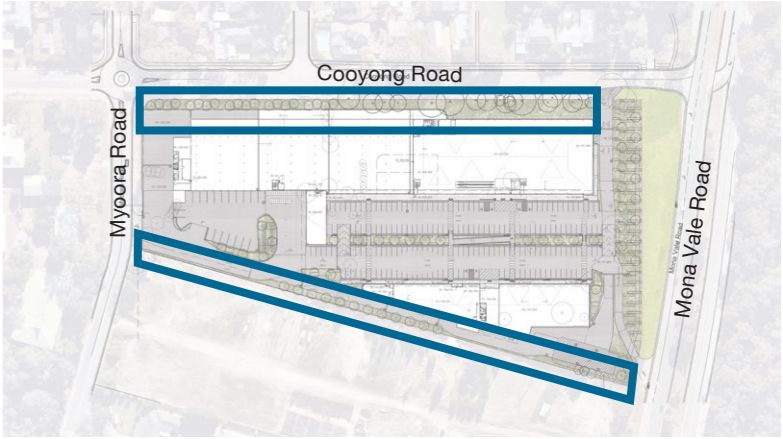
01 Existing Cooyong Rd trees to be retained

02 Proposed native grass groundcover and shrub understory planting

03 Additional infill tree planting to boundaries



# Landscape | Boundaries Section



Retain and protect existing trees where possible

Mixture of native shrubs, grasses and groundcovers

Section A-A



# Landscape | Plant Schedule

## Carpark Trees

|                                  |                           |        |          |      |
|----------------------------------|---------------------------|--------|----------|------|
| <i>Cupaniopsis anacardioides</i> | Tuckeroo                  | 7 x 5  | As Shown | 100L |
| <i>Elaeocarpus reticulatus</i>   | Blueberry Ash             | 10 x 4 | As Shown | 100L |
| <i>Livistona australis</i>       | Cabbage Tree Palm         | 25 x 4 | As Shown | 100L |
| <i>Melaleuca decora</i>          | White Feather Honeymyrtle | 6 x 3  | As Shown | 100L |
| <i>Melaleuca quinquenervia</i>   | Paperbark                 | 10 x 4 | As Shown | 100L |
| <i>Tristaniopsis laurina</i>     | Water Gum                 | 10 x 5 | As Shown | 100L |

## Boundary Trees

|                               |                          |  |          |     |
|-------------------------------|--------------------------|--|----------|-----|
| <i>Angophora floribunda</i>   | Rough-barked Angophora   |  | As Shown | 45L |
| <i>Backhousia myrtifolia</i>  | Grey Myrtle              |  | As Shown | 45L |
| <i>Banksia integrifolia</i>   | Coast Banksia            |  | As Shown | 45L |
| <i>Casuarina glauca</i>       | Swamp She-oak            |  | As Shown | 45L |
| <i>Corymbia gummifera</i>     | Red Bloodwood            |  | As Shown | 45L |
| <i>Corymbia maculata</i>      | Spotted Gum              |  | As Shown | 45L |
| <i>Eucalyptus haemastoma</i>  | Scribbly Gum             |  | As Shown | 45L |
| <i>Melaleuca stypheloides</i> | Prickly-leaved Paperbark |  | As Shown | 45L |
| <i>Syzygium glomulifera</i>   | Turpentine               |  | As Shown | 45L |
| <i>Synoum glandulosum</i>     | Scentless Rosewood       |  | As Shown | 45L |
| <i>Syzygium paniculatum</i>   | Magenta Lilly Pilly      |  | As Shown | 45L |
| <i>Syzygium smithii</i>       | Common Lilly Pilly       |  | As Shown | 45L |

## Shrubs and Accents

|   |                       |           |          |       |
|---|-----------------------|-----------|----------|-------|
| <i>Acmena smithii 'Minor'</i>               | Dwarf Lilly Pilly     | 4 x 2     | As Shown | 300mm |
| <i>Acacia 'Limelight'</i>                   | Acacia Limelight      | 0.5 x 0.5 | As Shown | 300mm |
| <i>Doryanthes exceisa</i>                   | Gymea Lily            | 3 x 2     | As Shown | 200mm |
| <i>Loropetalum chinense Rubrum</i>          | Chinese Fringe Flower | 1 x 1     | As Shown | 200mm |
| <i>Melaleuca linariifolia 'Claret Tops'</i> | Honey Myrtle          | 1 x 1     | As Shown | 200mm |
| <i>Photinia glabra 'Rubens'</i>             | Japanese Photinia     | 4 x 2     | As Shown | 300mm |
| <i>Phormium tenax</i>                       | New Zealand Flax      | 3 x 1.5   | As Shown | 200mm |
| <i>Philodendron Xanadu</i>                  | Xanadu                | .8 x 1    | As Shown | 200mm |
| <i>Westringia 'Wynyabbie Gem'</i>           | Coastal Rosemary      | 2 x 2     | As Shown | 200mm |

## Groundcovers / Grasses

|                                       |                     |         |      |       |
|---------------------------------------|---------------------|---------|------|-------|
| <i>Carpobrotus glaucescens</i>        | Pigface             | .2 x 1  | 5/m2 | 150mm |
| <i>Carex appressa</i>                 | Tall sedge          | .8 x 1  | 5/m2 | 150mm |
| <i>Dianella caerulea 'Breeze'</i>     | Breeze Paroo Lily   | .6 x .6 | 5/m2 | 150mm |
| <i>Hardenbergia violacea 'Rosea'</i>  | Native Sarsaparilla | 2 x 1   | 5/m2 | 150mm |
| <i>Hibbertia scandens</i>             |                     | .5 x 1  | 5/m2 | 150mm |
| <i>Lomandra longifolia</i>            | Mat Rush            | .7 x 1  | 5/m2 | 150mm |
| <i>Myoporum parvifolium 'Yareena'</i> | Yareena Myoporum    | 1.5     | 5/m2 | 150mm |
| <i>Poa labillardieri 'Eskdale'</i>    | Tussock Grass       | .6 x .6 | 5/m2 | 150mm |
| <i>Trachelospermum jasminoides</i>    | Star Jasmine        | .2 x .5 | 5/m2 | 150mm |

## Boundary Planting Matrix

| Botanical Name                 | Common Name           | "Mature Size (h x w)" | "Density /25m2" | Pot Size |
|--------------------------------|-----------------------|-----------------------|-----------------|----------|
| <i>Banksia ericifolia</i>      | Heath-leaved Banksia  | 6 x 2                 | 7               | 150mm    |
| <i>Callistemon citrinus</i>    | Crimson Bottlebrush   | 1.8 x 1.5             | 7               | 150mm    |
| <i>Dodonaea triquetra</i>      | Common Hop-Bush       | 3 x 2                 | 7               | 150mm    |
| <i>Westringia fruticosa</i>    | Coast Rosemary        | 1 x 1                 | 7               | 150mm    |
| <i>Melaleuca linearifolia</i>  | Snow in Summer        | 4 x 4                 | 7               | 150mm    |
| <i>Dianella caerulea</i>       | Blue Flax Lily        | .4 x .4               | 10              | Tube     |
| <i>Carpobrotus glaucescens</i> | Pig Face              | .2 x 1                | 10              | Tube     |
| <i>Hibbertia scandens</i>      | Golden Guinea Flower  | .2 x 1                | 10              | Tube     |
| <i>Lomandra longifolia</i>     | Spiny-headed Mat-rush | .6 x .6               | 10              | Tube     |



*Cupaniopsis anacardioides*



*Banksia integrifolia*



*Tristaniopsis laurina*



*Acmena smithii 'Minor'*



*Melaleuca linariifolia 'Claret Tops'*



*Loropetalum chinense Rubrum*



*Westringia 'Wynyabbie Gem'*



*Lomandra longifolia*



*Carpobrotus glaucescens*