

01/03/18

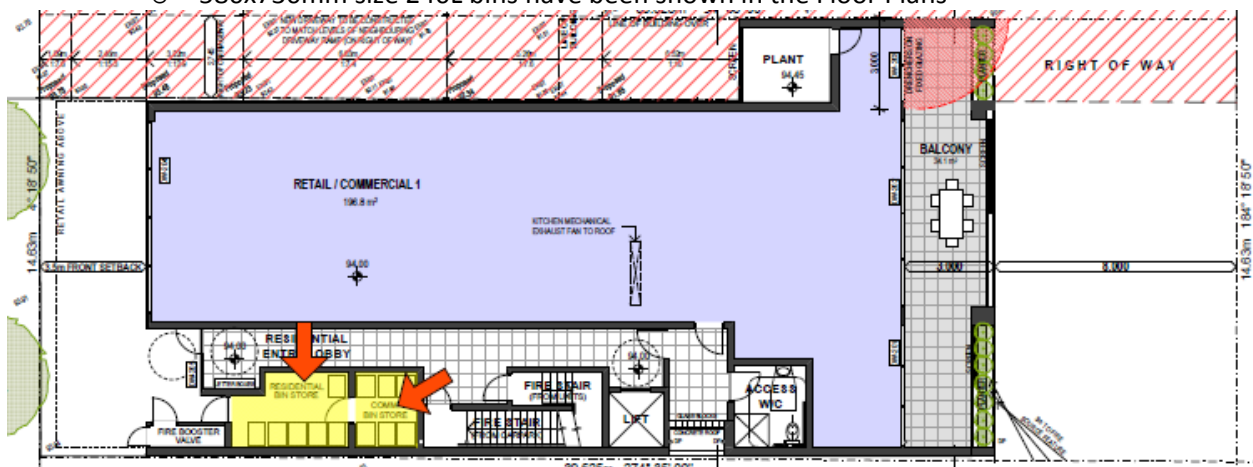
Northern Beaches Council - Pittwater

55 Kalang Rd, Elanora Heights NSW.

D.A . WASTE MANAGEMENT PLAN – ADDITIONAL INFORMATION

RFA Architects can confirm that:

- Development Application Architectural Drawing DA FLOOR PLAN LEVELS 1 & 2 Shows:
 - A Residential Bin Store Room in close proximity to street (within 6.5m) accessed from Kalang Rd.
 - A Commercial Bin Storage Area with access through the residential bin store located on Kalang Rd.
- Both Bin Storage Areas are to be:
 - Constructed out of Masonry and impervious to water
 - Be fitted with Vermin-Proof Doors
 - Have min 1:100 falls in the floor to a Floor Waste connected to the sewer
 - Have a tap with hose connection for the washing of bins
 - 580x730mm size 240L bins have been shown in the Floor Plans



A building manager will organise the movement of the bins to and from the bin storage areas to the kerb-side on bin collection days.

Yours faithfully,

RAY FITZ-GIBBON

Chartered Architect 5718 RAIA