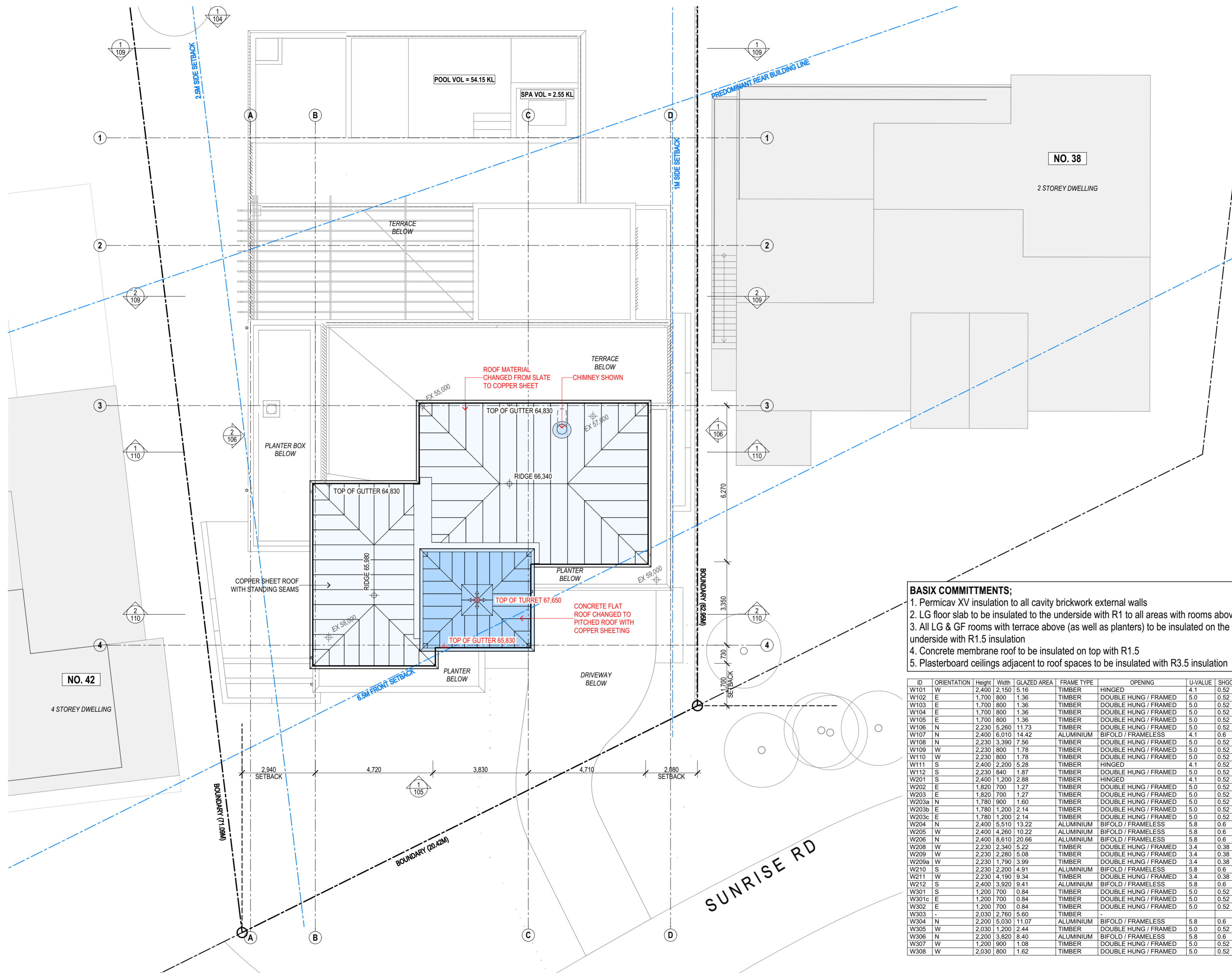


NEW RESIDENCE
 AT 40 SUNRISE ROAD, PALM BEACH
 FOR SUSAN ROTHWELL

ISSUE

- A: FOR DA SUBMISSION (05/21)
- B: POOL SETBACK INCREASED AND ROOF LEVEL LOWERED IN RESPONSE TO COUNCIL COMMENTS (10/21)
- C: FOR CC SUBMISSION (02/21)
- D: ROOF MATERIAL CHANGED TO COPPER SHEETING, CHIMNEYS SHOWN, AND FLAT ROOF OVER LIFT CHANGED TO A PITCHED ROOF FOR 4.55 SUBMISSION (03/21)

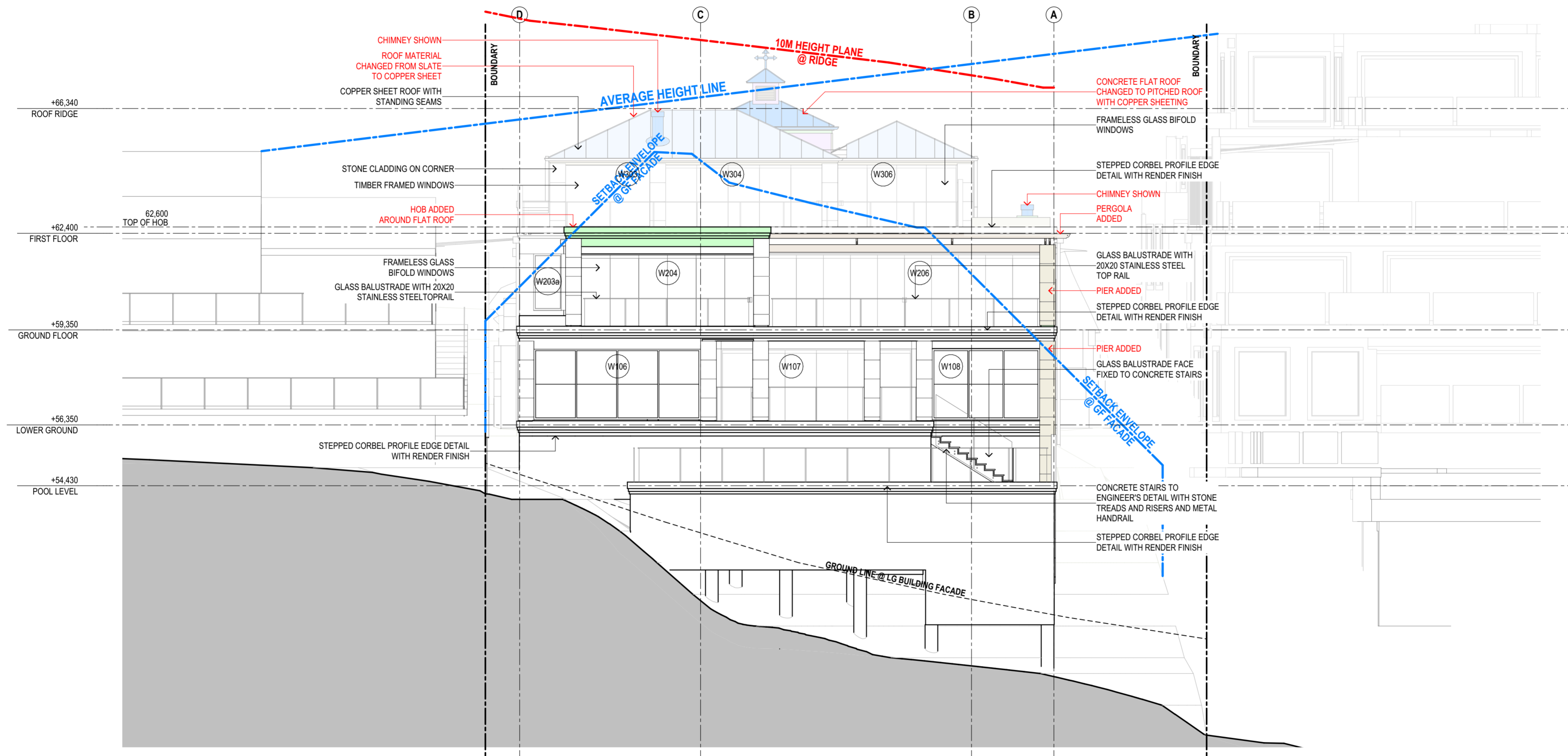


- BASIX COMMITMENTS;**
1. Permicav XV insulation to all cavity brickwork external walls
 2. LG floor slab to be insulated to the underside with R1 to all areas with rooms above
 3. All LG & GF rooms with terrace above (as well as planters) to be insulated on the underside with R1.5 insulation
 4. Concrete membrane roof to be insulated on top with R1.5
 5. Plasterboard ceilings adjacent to roof spaces to be insulated with R3.5 insulation

ID	ORIENTATION	Height	Width	GLAZED AREA	FRAME TYPE	OPENING	U-VALUE	SHGC VALUE
W101	W	2,400	2,150	5.16	TIMBER	HINGED	4.1	0.52
W102	E	1,700	800	1.36	TIMBER	DOUBLE HUNG / FRAMED	5.0	0.52
W103	E	1,700	800	1.36	TIMBER	DOUBLE HUNG / FRAMED	5.0	0.52
W104	E	1,700	800	1.36	TIMBER	DOUBLE HUNG / FRAMED	5.0	0.52
W105	E	1,700	800	1.36	TIMBER	DOUBLE HUNG / FRAMED	5.0	0.52
W106	N	2,230	5,260	11.73	TIMBER	DOUBLE HUNG / FRAMED	5.0	0.52
W107	N	2,400	6,010	14.42	ALUMINIUM	BIFOLD / FRAMELESS	4.1	0.6
W108	N	2,230	3,390	7.56	TIMBER	DOUBLE HUNG / FRAMED	5.0	0.52
W109	W	2,230	800	1.78	TIMBER	DOUBLE HUNG / FRAMED	5.0	0.52
W110	W	2,230	800	1.78	TIMBER	DOUBLE HUNG / FRAMED	5.0	0.52
W111	S	2,400	2,200	5.28	TIMBER	HINGED	4.1	0.52
W112	S	2,230	840	1.87	TIMBER	DOUBLE HUNG / FRAMED	5.0	0.52
W201	S	2,400	1,200	2.88	TIMBER	HINGED	4.1	0.52
W202	E	1,820	700	1.27	TIMBER	DOUBLE HUNG / FRAMED	5.0	0.52
W203	E	1,820	700	1.27	TIMBER	DOUBLE HUNG / FRAMED	5.0	0.52
W203a	N	1,780	900	1.60	TIMBER	DOUBLE HUNG / FRAMED	5.0	0.52
W203b	E	1,780	1,200	2.14	TIMBER	DOUBLE HUNG / FRAMED	5.0	0.52
W203c	E	1,780	1,200	2.14	TIMBER	DOUBLE HUNG / FRAMED	5.0	0.52
W204	N	2,400	5,510	13.22	ALUMINIUM	BIFOLD / FRAMELESS	5.8	0.6
W205	W	2,400	4,260	10.22	ALUMINIUM	BIFOLD / FRAMELESS	5.8	0.6
W206	N	2,400	8,610	20.66	ALUMINIUM	BIFOLD / FRAMELESS	5.8	0.6
W208	W	2,230	2,340	5.22	TIMBER	DOUBLE HUNG / FRAMED	3.4	0.38
W209	W	2,230	2,280	5.08	TIMBER	DOUBLE HUNG / FRAMED	3.4	0.38
W209a	W	2,230	1,790	3.99	TIMBER	DOUBLE HUNG / FRAMED	3.4	0.38
W210	S	2,230	2,200	4.91	ALUMINIUM	BIFOLD / FRAMELESS	5.8	0.6
W211	W	2,230	4,190	9.34	TIMBER	DOUBLE HUNG / FRAMED	3.4	0.38
W212	S	2,400	3,920	9.41	ALUMINIUM	BIFOLD / FRAMELESS	5.8	0.6
W301	S	1,200	700	0.84	TIMBER	DOUBLE HUNG / FRAMED	5.0	0.52
W301c	E	1,200	700	0.84	TIMBER	DOUBLE HUNG / FRAMED	5.0	0.52
W302	E	1,200	700	0.84	TIMBER	DOUBLE HUNG / FRAMED	5.0	0.52
W303	-	2,030	2,760	5.60	TIMBER	-	-	-
W304	N	2,200	5,030	11.07	ALUMINIUM	BIFOLD / FRAMELESS	5.8	0.6
W305	W	2,030	1,200	2.44	TIMBER	DOUBLE HUNG / FRAMED	5.0	0.52
W306	N	2,200	3,820	8.40	ALUMINIUM	BIFOLD / FRAMELESS	5.8	0.6
W307	W	1,200	900	1.08	TIMBER	DOUBLE HUNG / FRAMED	5.0	0.52
W308	W	2,030	800	1.62	TIMBER	DOUBLE HUNG / FRAMED	5.0	0.52

SITE AND ROOF PLAN

SCALE	1:100@A2
DATE	13/03/23
JOB NO.	SRSP
DWG. NO.	DA100
ISSUE	D



1

NORTH ELEVATION
1:100

**SUSAN ROTHWELL
ARCHITECTS**

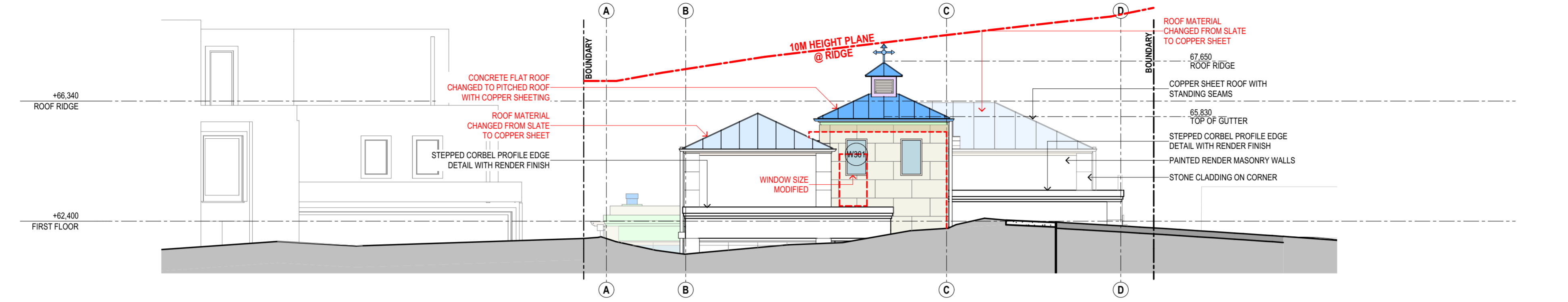
38 SERPENTINE RD GREENWICH N.S.W 2065
TEL: (02) 9439 2380 FAX: (02) 9901 3185
EMAIL: susan@rothwellarchitects.com.au

NEW RESIDENCE
AT 40 SUNRISE ROAD, PALM BEACH
LOT 151 / DP 6937
FOR SUSAN ROTHWELL

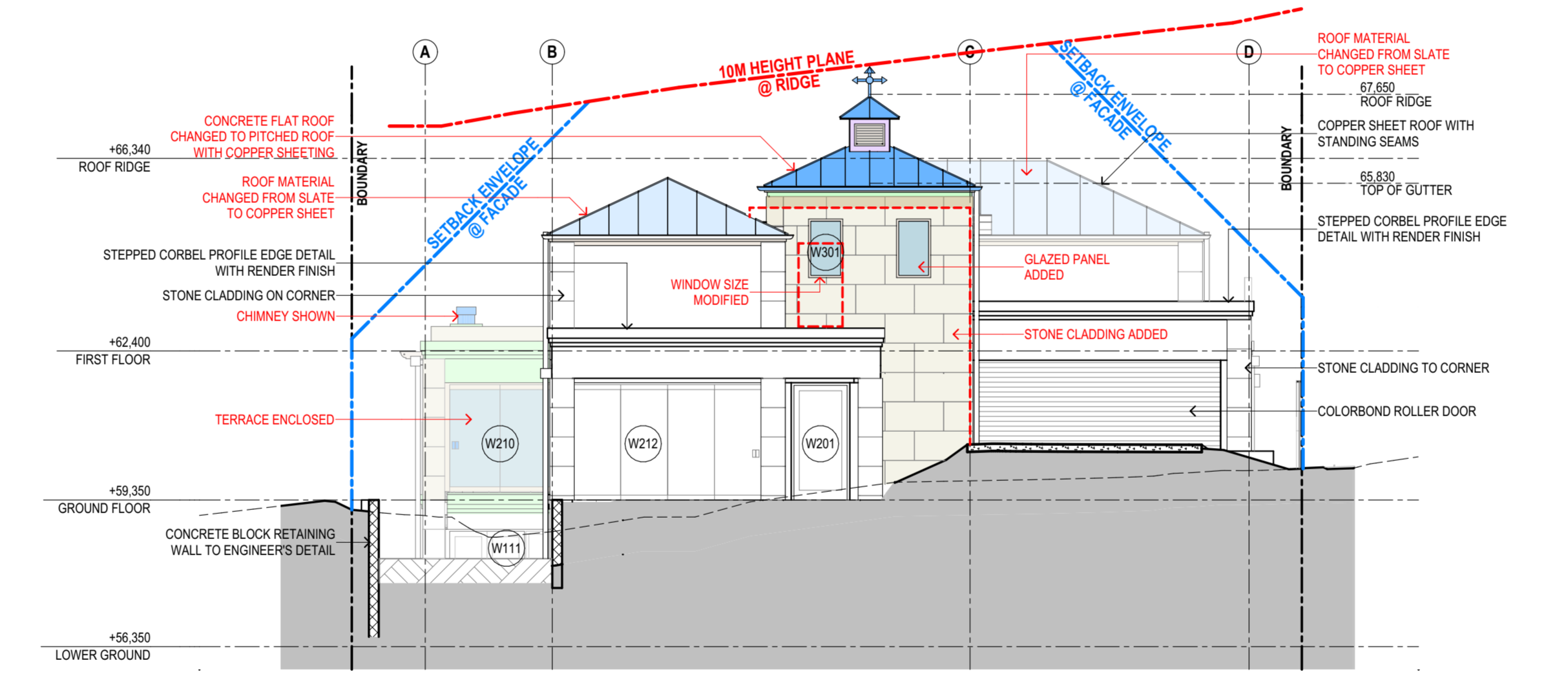
D: HOB ADDED TO FLAT ROOF OVER DINING, PERGOLA ADDED, ROOF MATERIAL CHANGED TO COPPER SHEETING, CHIMNEYS SHOWN AND FLAT ROOF OVER LIFT CHANGED TO A PITCHED ROOF FOR 4.55 SUBMISSION (08/21)
C: FOR CC SUBMISSION (02/21)
B: BUILDING LEVELS LOWERED AND DINING ROOM SETBACK INCREASED IN RESPONSE TO COUNCIL COMMENTS (10/21)
A: FOR DA SUBMISSION (06/21)
ISSUE

NORTH ELEVATION

SCALE:	PROJECT	DWG NO.	ISSUE
DATE: 1:100@A2 13/03/23	SRSP	DA104	D



1 - SOUTH ELEVATION (STREET VIEW) 1:100



2 - SOUTH ELEVATION (AT FACADE) 1:100

SUSAN ROTHWELL ARCHITECTS

38 SERPENTINE RD GREENWICH N.S.W 2065
 TEL: (02) 9439 2380 FAX: (02) 9901 3185
 EMAIL: susan@rothwellarchitects.com.au

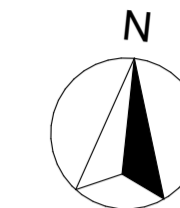
NEW RESIDENCE
 AT 40 SUNRISE ROAD, PALM BEACH
 LOT 151 / DP 6937
 FOR SUSAN ROTHWELL

E: ROOF MATERIAL CHANGED TO COPPER SHEETING, CHIMNEYS SHOWN, ROOF HEIGHT CHANGED TO PITCHED ROOF, STONE CLADDING ADDED TO LIFT LOBBY AND TERRACE ENCLOSED FOR 4.55 SUBMISSION (03/21)
 D: FOR CC SUBMISSION (02/21)
 C: TERRACE 4 DELETED AND LIVING ROOM EXTENDED FOR 4.55 SUBMISSION (10/22)
 B: BUILDING LEVELS LOWERED IN RESPONSE TO COUNCIL COMMENTS (10/21)
 A: FOR DA SUBMISSION (06/21) ISSUE

PROJECT		DWG NO.	ISSUE
SCALE:	1:100@A2	SRSP	DA105
DATE:	13/03/23		E

SUSAN ROTHWELL ARCHITECTS

38 SERPENTINE RD GREENWICH N.S.W 2065
 TEL: (02) 9439 2380 FAX: (02) 9901 3185
 EMAIL: susan@rothwellarchitects.com.au



NEW RESIDENCE
 AT 40 SUNRISE ROAD, PALM BEACH
 FOR SUSAN ROTHWELL

ISSUE

A: FOR DA SUBMISSION (05/21)

B: GARAGE SETBACK INCREASED, DINING ROOM SETBACK INCREASED AND FLOOR LEVELS LOWERED IN RESPONSE TO COUNCIL COMMENTS (10/21)

C: TERRACE 4 DELETED AND LIVING ROOM EXTENDED FOR 4.55 SUBMISSION (10/22)

D: FOR CC SUBMISSION (02/21)

E: FOR 4.55 SUBMISSION (02/21)

F: HOB ADDED TO FLAT ROOF OVER DINING, PERGOLA ADDED, PLANTER HEIGHT REDUCED AND LENGTH EXTENDED OVER ENCLOSED TERRACE UNDER, ROOF MATERIAL CHANGED TO COPPER SHEETING, CHIMNEYS SHOWN, ROOF OVER LIFT CHANGED TO A PITCHED ROOF, STONE CLADDING ADDED TO LIFT LOBBY AND TERRACE ENCLOSED FOR 4.55 SUBMISSION (03/21)

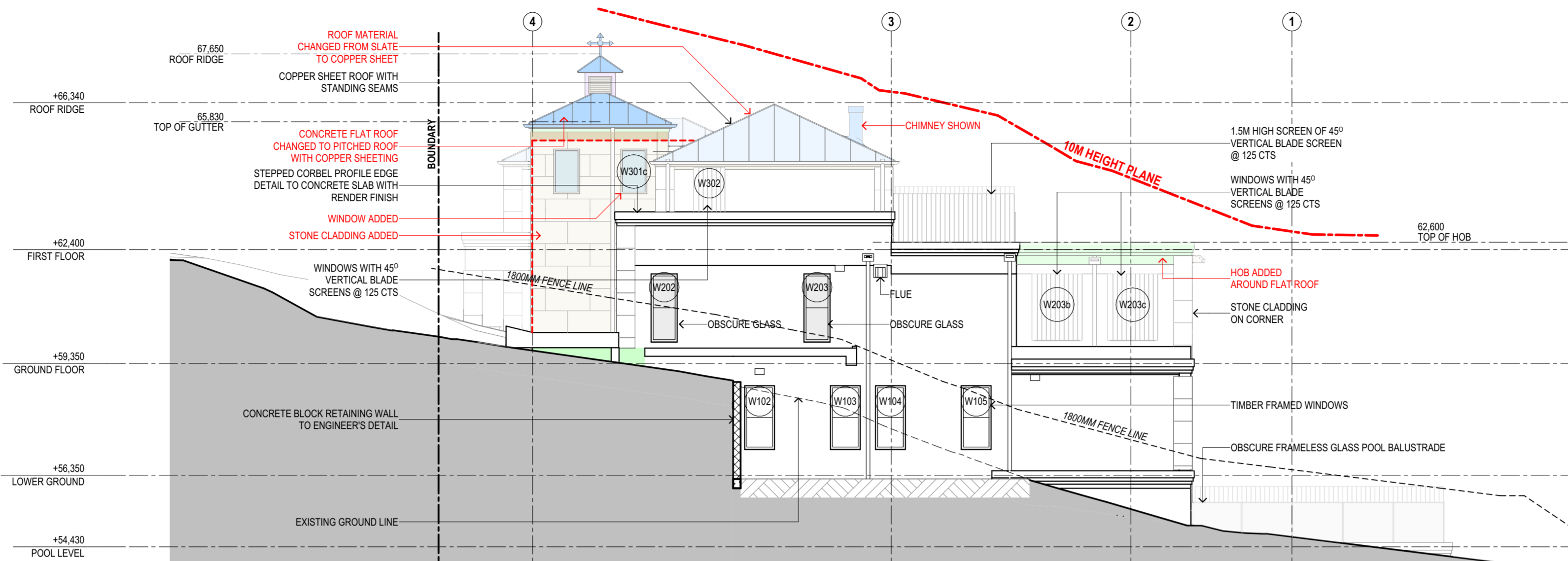
EAST AND WEST ELEVATIONS

SCALE 1:100@A2

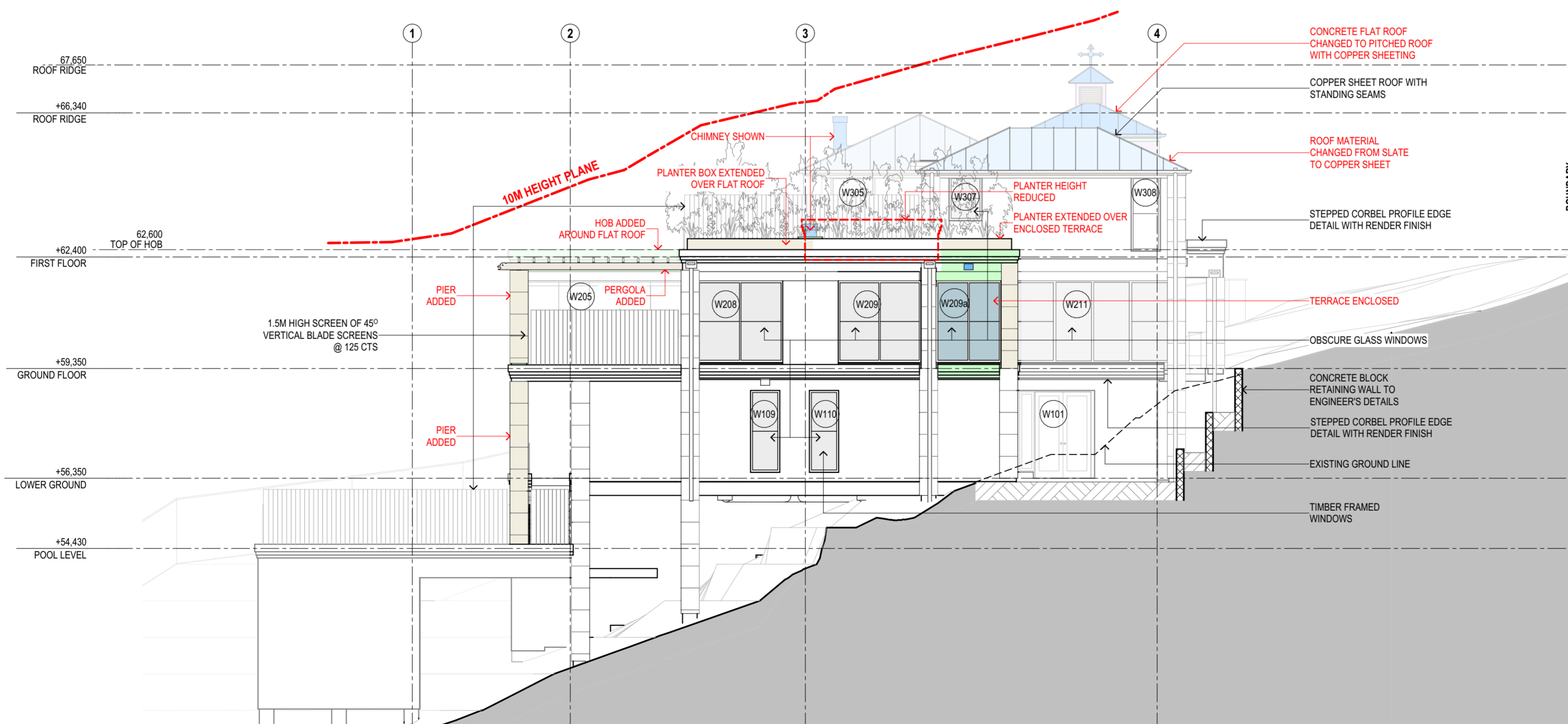
DATE 13/03/23

JOB NO. SRSP

DWG. NO. DA106 ISSUE E



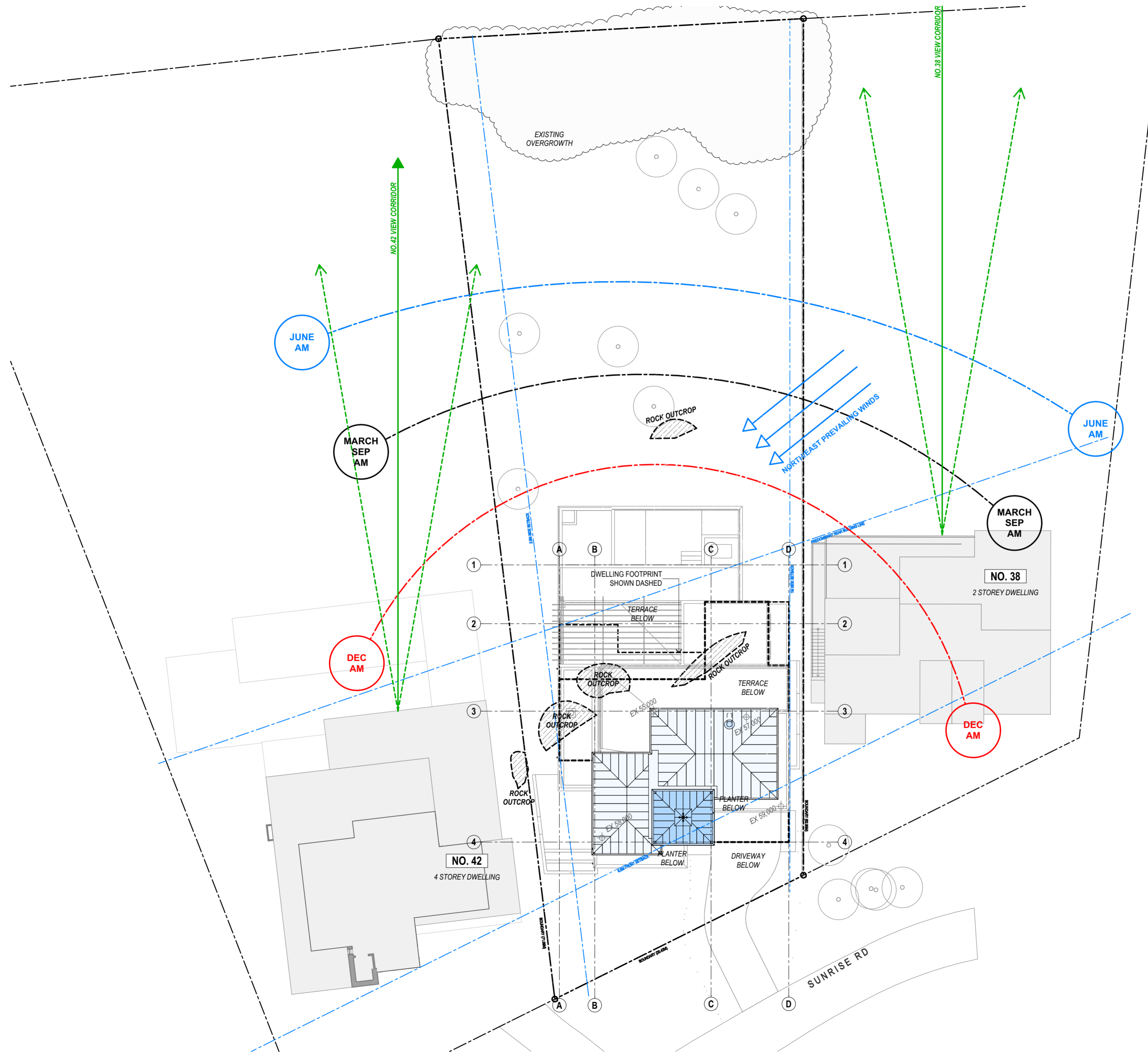
EAST ELEVATION
 1:100



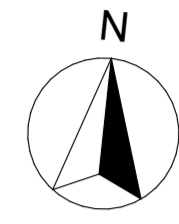
WEST ELEVATION
 1:100

1

2



SUSAN ROTHWELL ARCHITECTS
 38 SERPENTINE RD GREENWICH N.S.W 2065
 TEL: (02) 9439 2380 FAX: (02) 9901 3185
 EMAIL: susan@rothwellarchitects.com.au

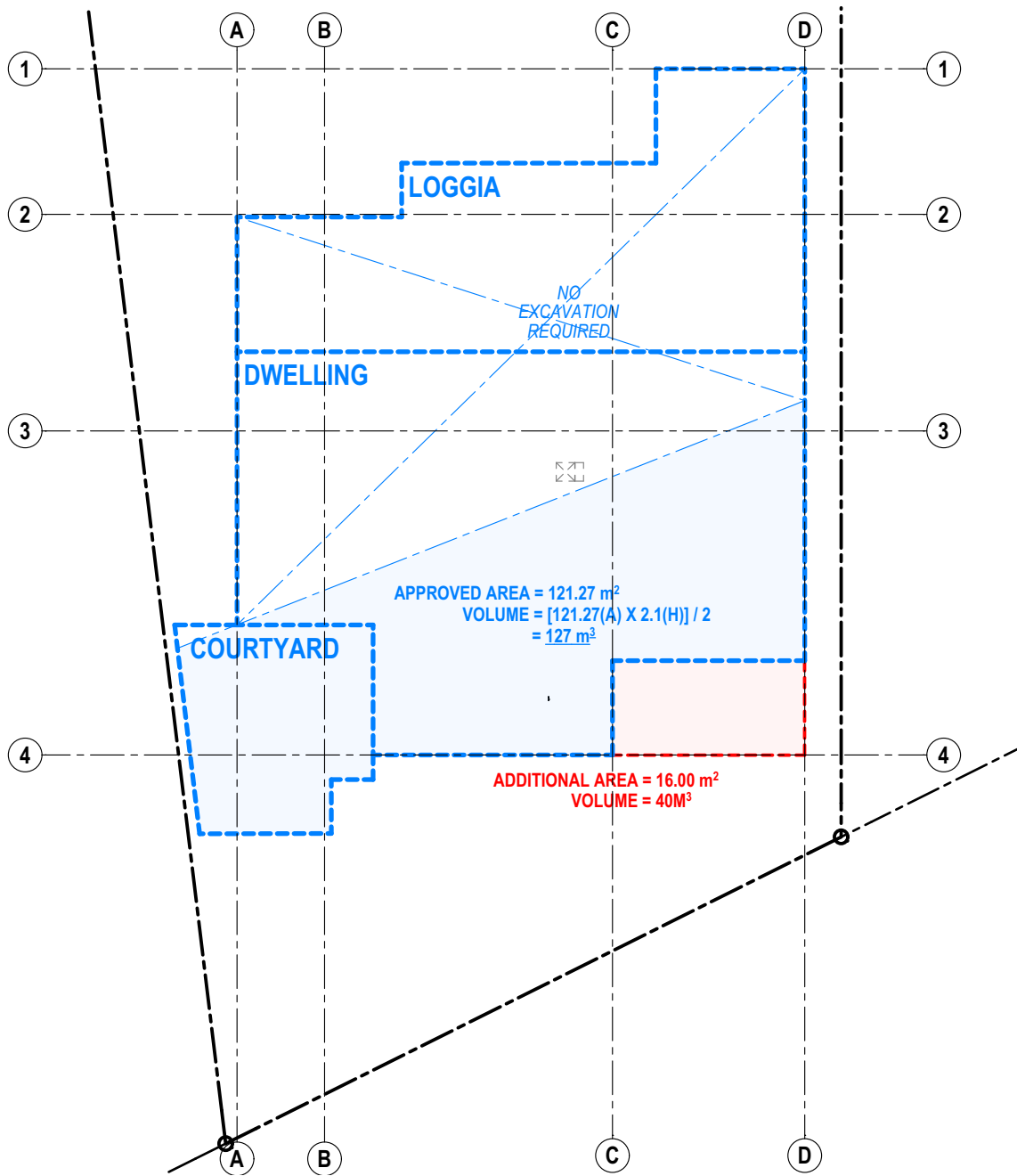


NEW RESIDENCE
 AT 40 SUNRISE ROAD, PALM BEACH
 FOR SUSAN ROTHWELL

ISSUE
 A: FOR DA SUBMISSION (05/21)
 B: POOL SETBACK INCREASED IN RESPONSE TO COUNCIL COMMENTS (10/21)
 C: ROOF MATERIAL CHANGED TO COPPER SHEETING AND FLAT ROOF OVER LIFT CHANGED TO A PITCHED ROOF FOR 4.55 SUBMISSION (03/21)

SITE ANALYSIS

SCALE	1:200@A2
DATE	13/03/23
JOB NO.	SRSP
DWG. NO.	DA1000
ISSUE	C



<p>SITE AREA = 1528 M2</p>
<p>APPROVED EXCAVATION = 127 m³</p>
<p>ADDITIONAL EXCAVATION = 40 m³</p>

SUSAN ROTHWELL ARCHITECTS
 38 SERPENTINE RD GREENWICH N.S.W 2065
 TEL: (02) 9439 2380 FAX: (02) 9901 3185
 EMAIL: susan@rothwellarchitects.com.au



NEW RESIDENCE
 40 SUNRISE ROAD, PALM BEACH

B: FOR 4.55 SUBMISSION (03/23)
 A: FOR DA SUBMISSION (05/21)

EXCAVATION CALCULATION PLAN		
PROJECT	DWG NO.	ISSUE
SRSP	DA1001	B
SCALE: 1:200@A4	DATE: 13/03/23	



MINOR AREA OF
ADDITIONAL SHADOW
CAST ON NEIGHBOURS
GARDEN AREA

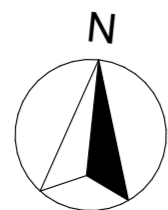
MINOR AREA OF ADDITIONAL
SHADOW CAST ON
LANDSCAPE STRIP

MINOR AREA OF
ADDITIONAL
SHADOW CAST ON
LANDSCAPE STRIP

- LEGEND:**
- AREA OF **EXISTING** SHADOW
 - AREA OF **APPROVED** SHADOW
 - AREA OF **ADDITIONAL** SHADOW

**SUSAN ROTHWELL
ARCHITECTS**

38 SERPENTINE RD GREENWICH N.S.W 2065
TEL: (02) 9439 2380 FAX: (02) 9901 3185
EMAIL: susan@rothwellarchitects.com.au




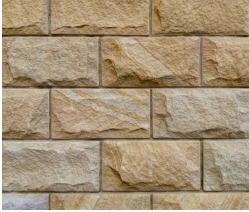





NEW RESIDENCE
AT 40 SUNRISE ROAD, PALM BEACH
LOT 151 / DP 6937
FOR SUSAN ROTHWELL

C: FOR 4.55 SUBMISSION
(03/23)
B: REVISED TO SUIT
PLANNING CHANGES IN
RESPONSE TO COUNCIL
COMMENTS FOR DA
SUBMISSION
(10/21)
A: FOR DA SUBMISSION
(06/21)
ISSUE

SHADOW DIAGRAMS @ JUNE 21

SCALE:	PROJECT	DWG NO.	ISSUE
DATE: 13/03/23	SRSP	DA1006	C

EXTERNAL FINISHES SCHEDULE

EXTERIOR SURFACE TYPE	FINISH	
<u>EXTERIOR WALLS</u>	PAINTED RENDER COLOUR - DULUX MANGROVE	
<u>LIFT SHAFT EXTERIOR WALLS</u>	SANDSTONE CLADDING COLOUR - SYDNEY SANDSTONE	
<u>ROOF</u>	METAL ROOF; MATERIAL - COPPER	
<u>BALUSTRADES & POOL SAFETY FENCE</u>	FRAMELESS GLASS BALUSTRADE; COLOUR - CLEAR	
<u>BI-FOLD DOORS</u>	FRAMELESS GLASS BIFOLD COLOUR - CLEAR	
<u>DOORS AND WINDOWS</u>	TIMBER FRAMED - PAINTED; COLOUR - DULUX NAMADJI	
<u>GARAGE DOOR</u>	COLORBOND ROLLER DOOR; COLOUR - DULUX MANGROVE	

**SUSAN ROTHWELL
ARCHITECTS**

38 SERPENTINE RD GREENWICH N.S.W 2065
TEL: (02) 9439 2380 FAX: (02) 9901 3185
EMAIL: susan@rothwellarchitects.com.au

NEW RESIDENCE
40 SUNRISE ROAD, PALM
BEACH

B: STONE CLADDING
ADDED TO LIFT SHAFT
AND SLATE ROOF
CHANGED TO COPPER
SHEETING FOR 4.55
SUBMISSION
(03/23)
A: FOR DA SUBMISSION
(05/21)
ISSUE

EXTERNAL FINISHES SCHEDULE

SCALE:	PROJECT	DWG NO.	ISSUE
DATE: 13/03/23	SRSP	DA1009	B