



NOMINATED ARCHITECT: KAICHI LEUNG  
NSW 7133 | QLD 4478 | NT 1190 | VIC 800401 | NZ 3075

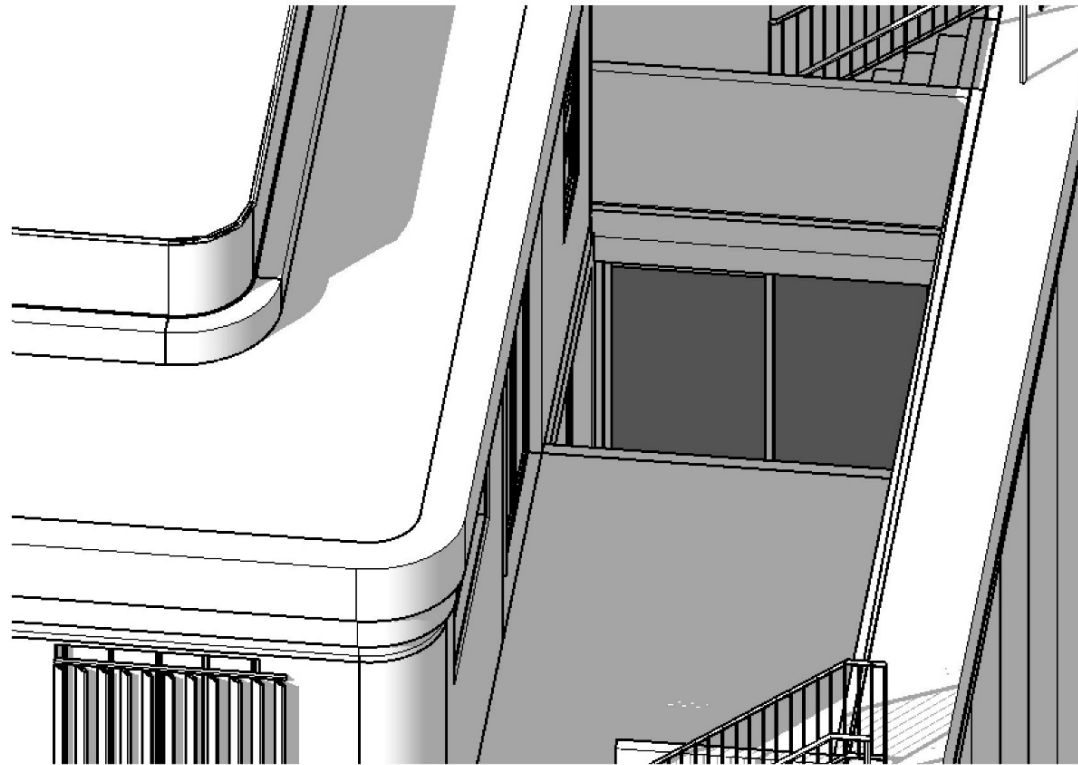
# 1955 PITTWATER ROAD BAYVIEW

## UNIT 1 BEDROOM—SOLAR ANALYSIS



# SOLAR ANALYSIS

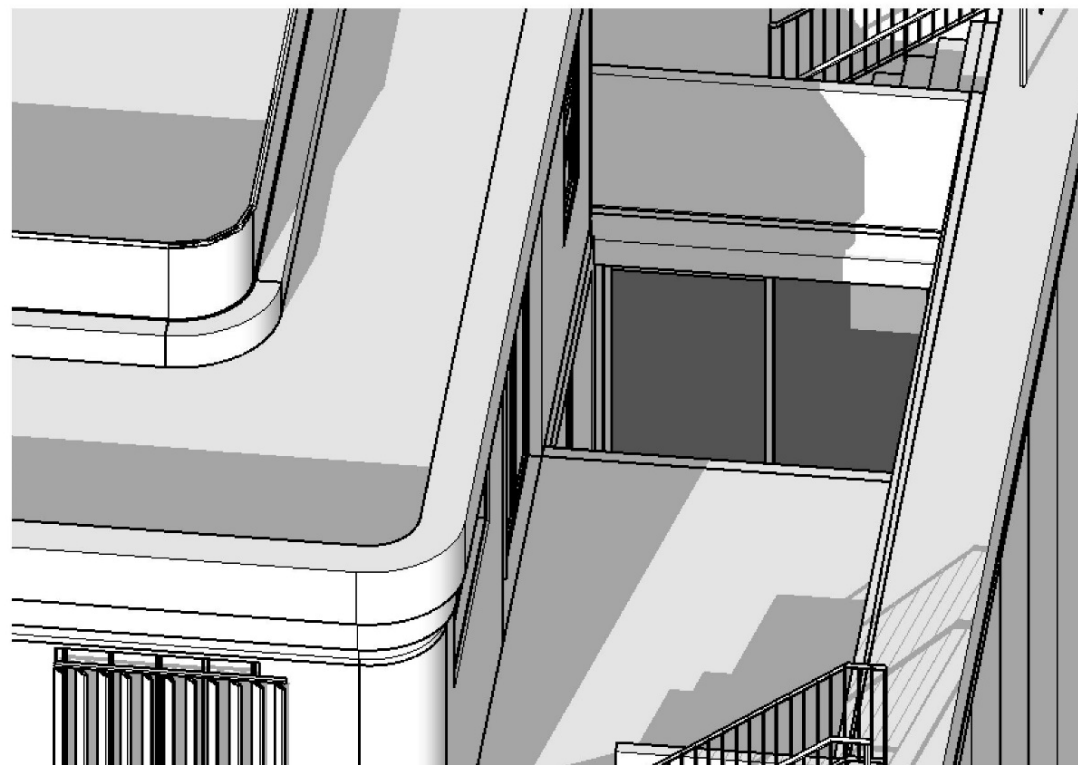
JUNE 21 , 1-3 PM



SHADOW STUDY  
JUNE 21-1 PM



SHADOW STUDY  
JUNE 21-2 PM



SHADOW STUDY  
JUNE 21-3 PM

## SUMMARY

- **JUNE 21** – BEDROOM COURTYARD WILL RECEIVE DIRECT SOLAR ACCESS BETWEEN 2 PM-3 PM

### DISCLAIMER:

All information contained within this document is subject to further design development, council consultation and approval.

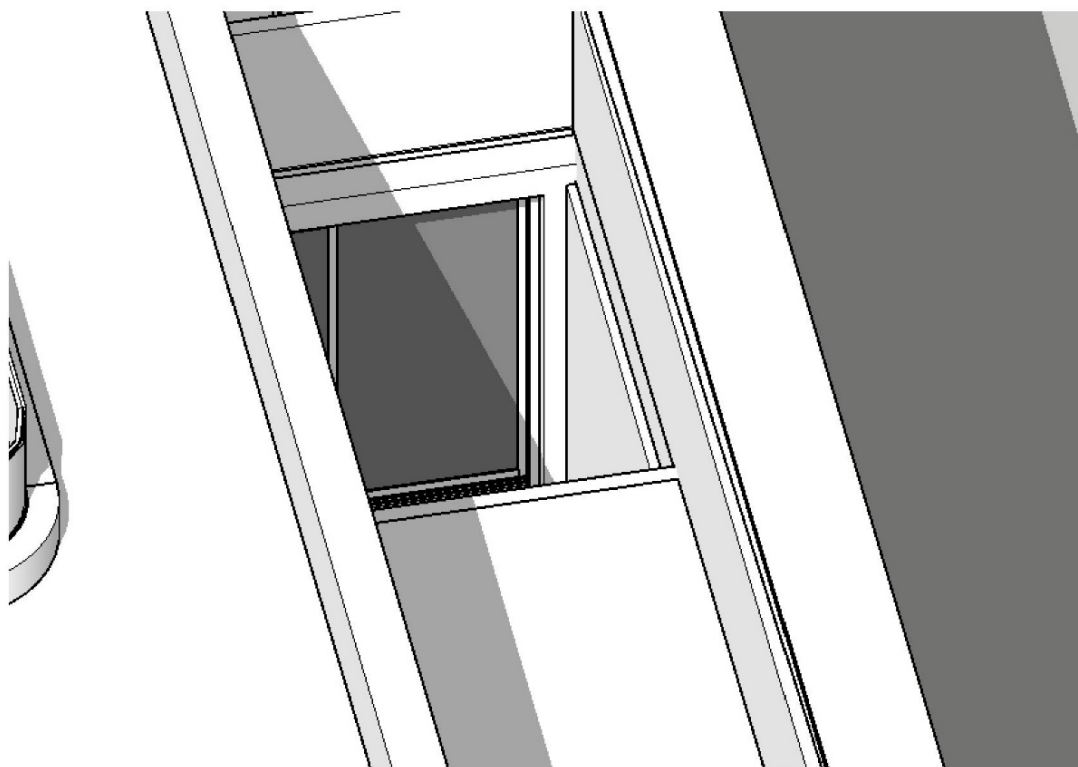
WWW.APLUSDG.COM.AU | NOMINATED ARCHITECT: KAICHI LEUNG NSW 7133



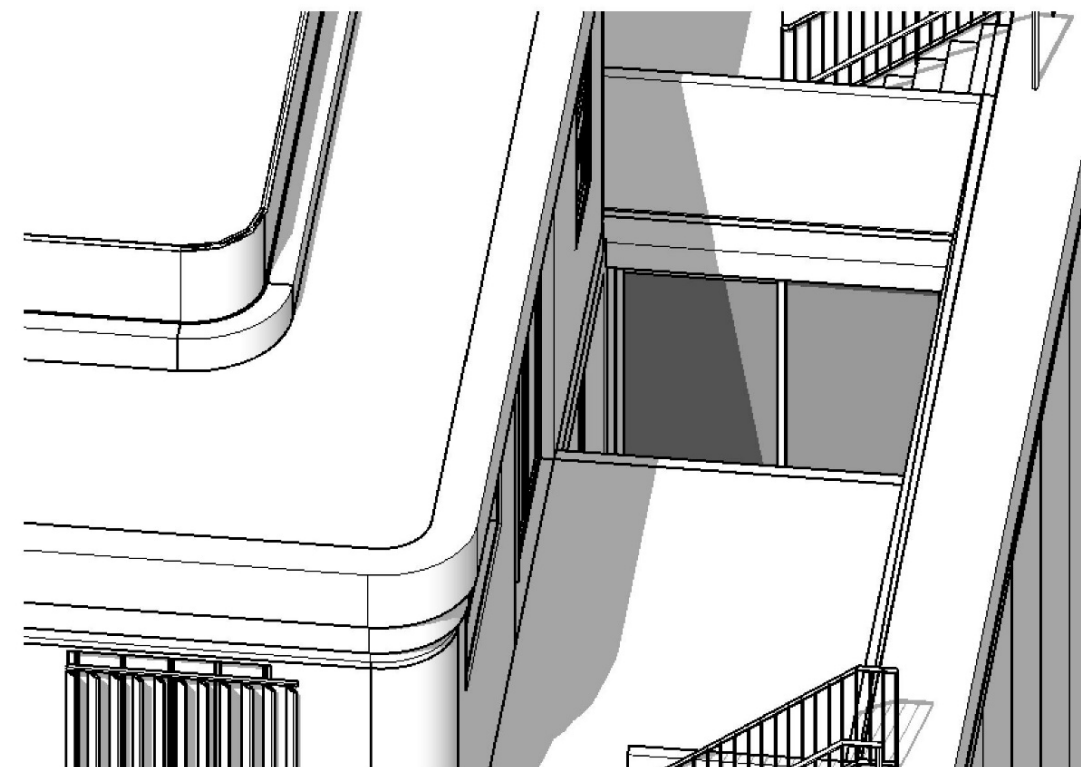
Job: a22039 Date: 22 APRIL 2024

# SOLAR ANALYSIS

MARCH 21 , 1-3 PM



SHADOW STUDY  
MARCH 21-1 PM



SHADOW STUDY  
MARCH 21-2 PM



SHADOW STUDY  
MARCH 21-3 PM

## SUMMARY

- **MARCH 21** – BEDROOM AND COURTYARD WILL RECEIVE DIRECT SOLAR ACCESS BETWEEN 1 PM-3 PM

### DISCLAIMER:

All information contained within this document is subject to further design development, council consultation and approval.

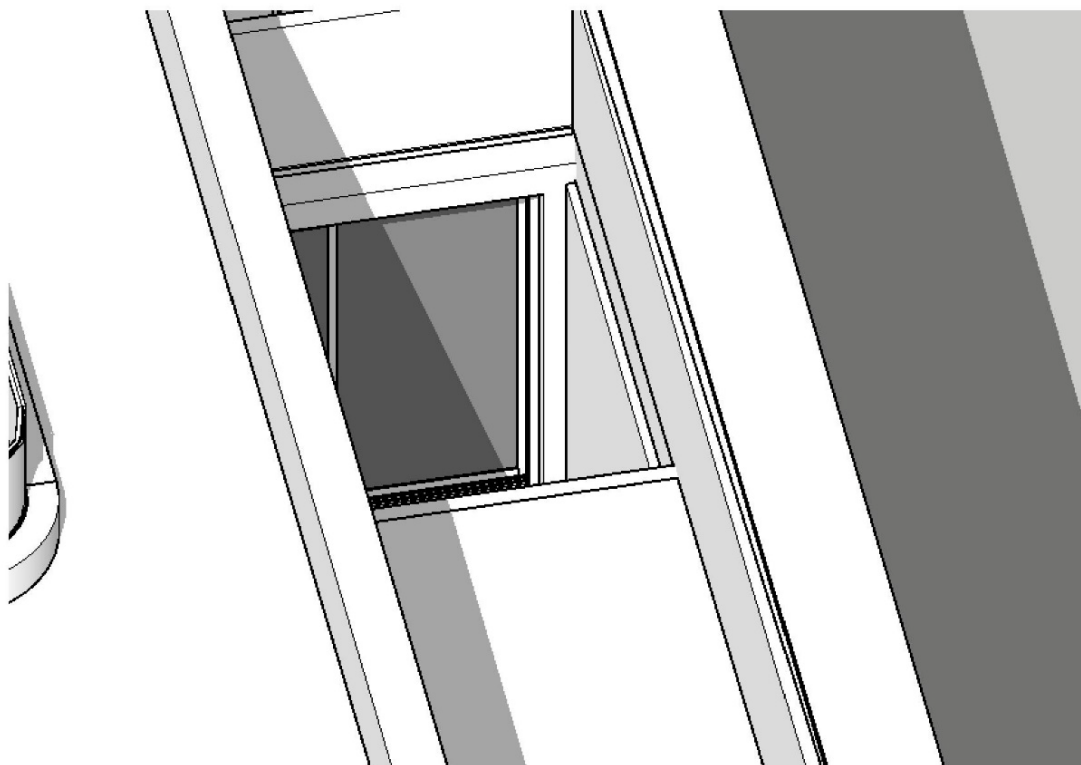
WWW.APLUSDG.COM.AU | NOMINATED ARCHITECT: KAICHI LEUNG NSW 7133



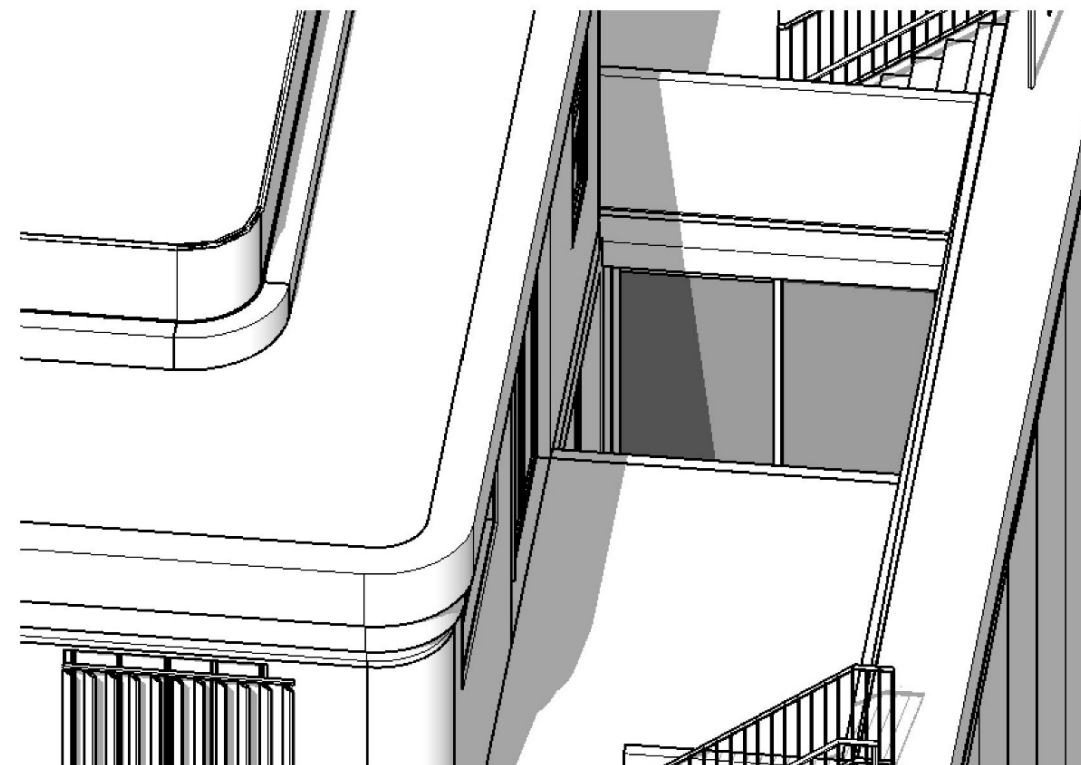
Job: a22039 Date: 22 APRIL 2024

# SOLAR ANALYSIS

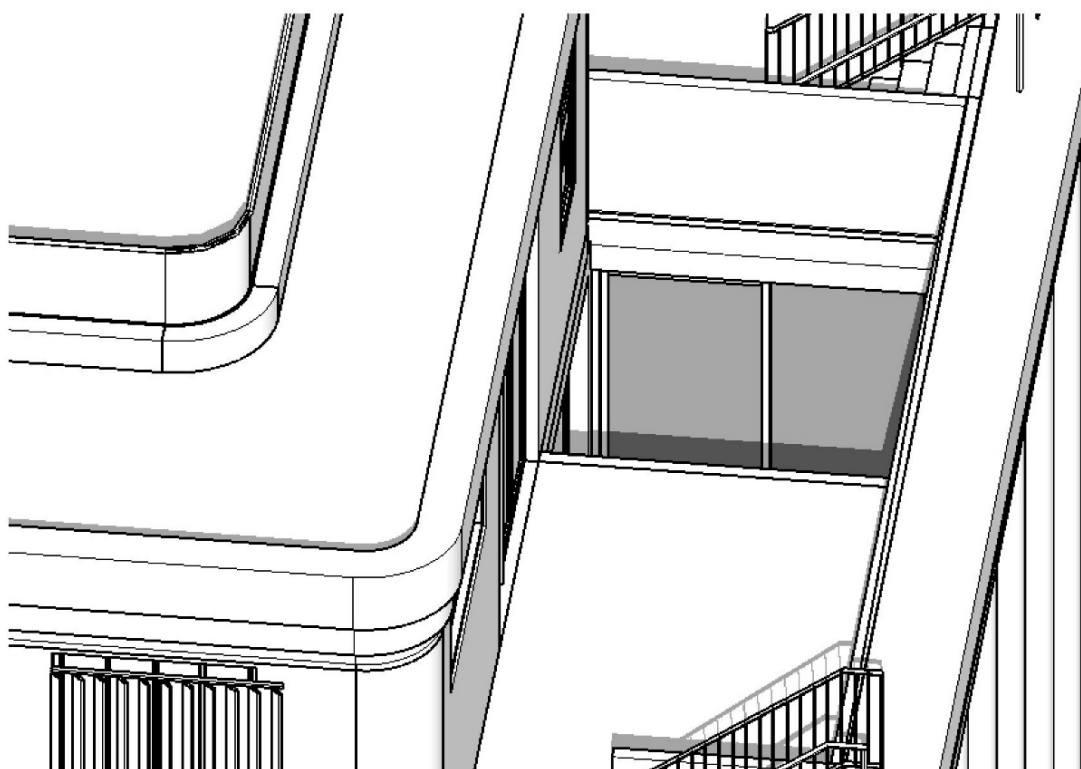
SEPTEMBER 21 , 1-3 PM



SHADOW STUDY  
SEPTEMBER 21-1 PM



SHADOW STUDY  
SEPTEMBER 21-2 PM



SHADOW STUDY  
SEPTEMBER 21-3 PM

## SUMMARY

- **SEPTEMBER 21** – BEDROOM AND COURTYARD WILL RECEIVE DIRECT SOLAR ACCESS BETWEEN 1 PM-3 PM

**DISCLAIMER:**

All information contained within this document is subject to further design development, council consultation and approval.

WWW.APLUSDG.COM.AU | NOMINATED ARCHITECT: KAICHI LEUNG NSW 7133



Job: a22039 Date: 22 APRIL 2024

The proposed modifications will not result in unreasonable impacts on solar access of the subject site. The development will retain north-east facing terraces and living areas which will retain adequate solar access. The proposed modifications will provide additional solar access to the proposed Unit 1 bedroom.

The subject site and neighbouring dwellings will continue to receive a minimum of 3 hours of sunlight between 9am and 3pm on June 21st. Overall, the proposed modifications will not result in unreasonable overshadowing impacts and neighbour dwelling is anticipated to retain adequate solar access to north-eastern living areas/private open space.

**DISCLAIMER:**

All information contained within this document is subject to further design development, council consultation and approval.



## DISCLAIMER

The scheme contained within this document has been prepared by a+ Design Group solely for the purpose of providing information about potential development.

The materials should not be considered to be error free or to include all relevant information. Nothing in this document in any way constitutes advice or a representation by a+ Design Group nor does the transmission or sending of these materials create any contractual relationship.

Neither a+ Design Group nor any of its officers, employees, agents or contractors, will be liable for any direct or indirect loss or damage you may suffer or incur arising directly or indirectly from the use of any materials from this document.

a+ Design Group retains copyright and all present and future moral rights in all intellectual property in all the materials authored by it and in any works executed from these drawings and documents.



DESIGN GROUP

NOMINATED ARCHITECT: KAICHILEUNG  
NSW Architects Registration No. 7133

**APLUS DESIGN GROUP**

A: Level 3, 9 Barrack Street, Sydney, NSW 2000  
Ph: 1300 377 789 | W: [www.aplusdg.com.au](http://www.aplusdg.com.au)