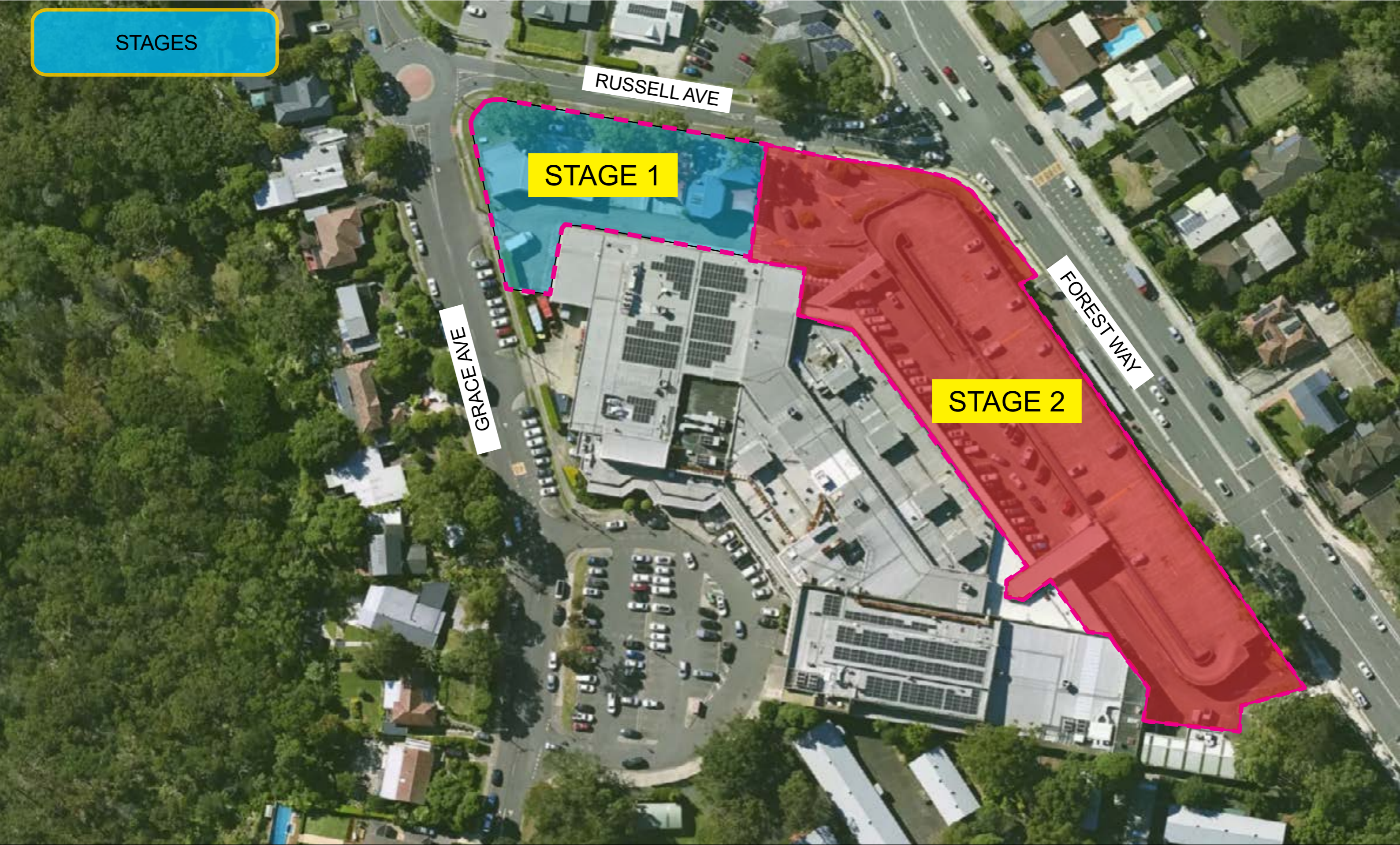


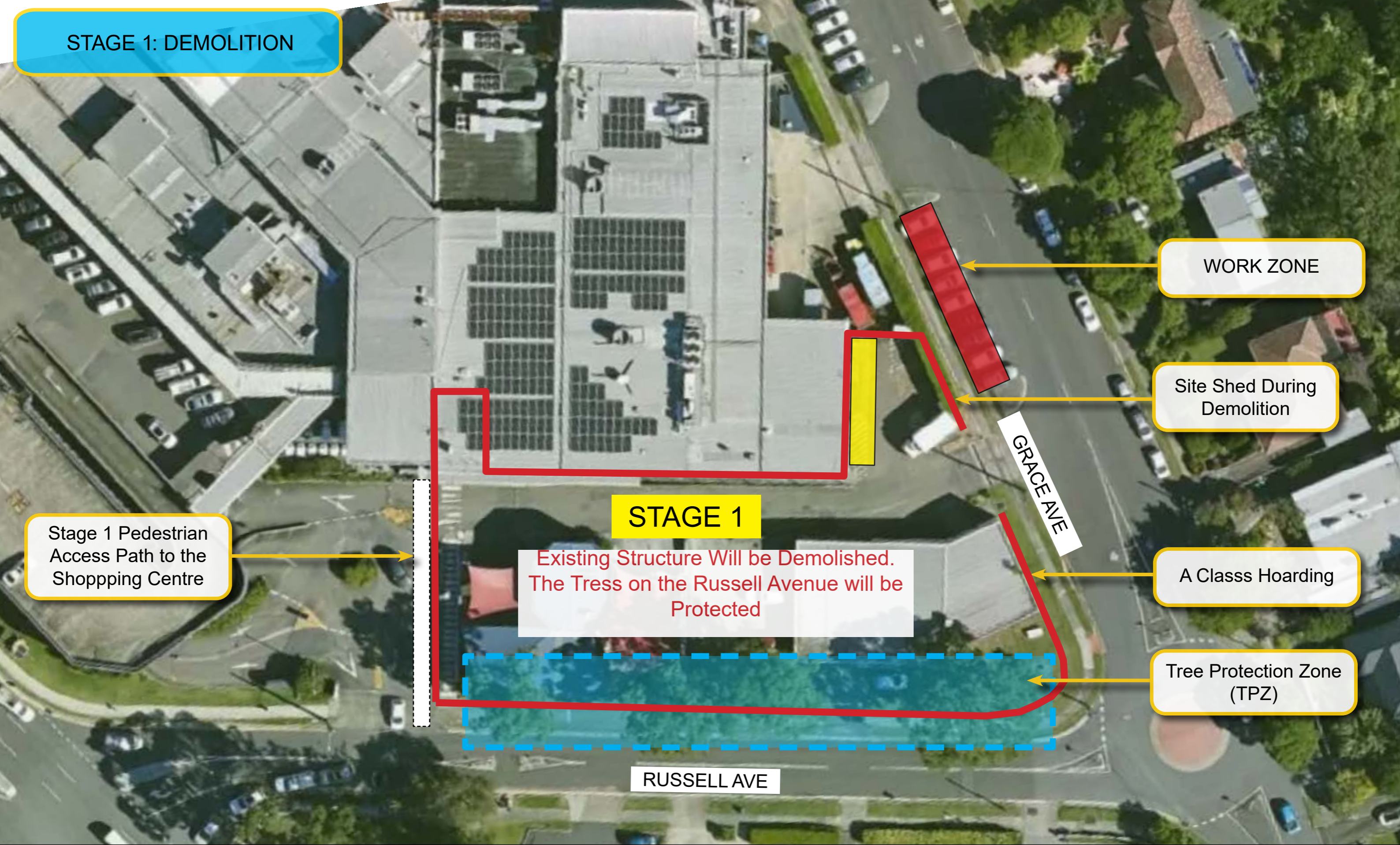
FORESTWAY SHOPPING CENTRE
22 FOREST WAY, FRENCHS FOREST NSW 2086



STAGES



STAGE 1: DEMOLITION



WORK ZONE

Site Shed During Demolition

Stage 1 Pedestrian Access Path to the Shopping Centre

STAGE 1

Existing Structure Will be Demolished. The Tress on the Russell Avenue will be Protected

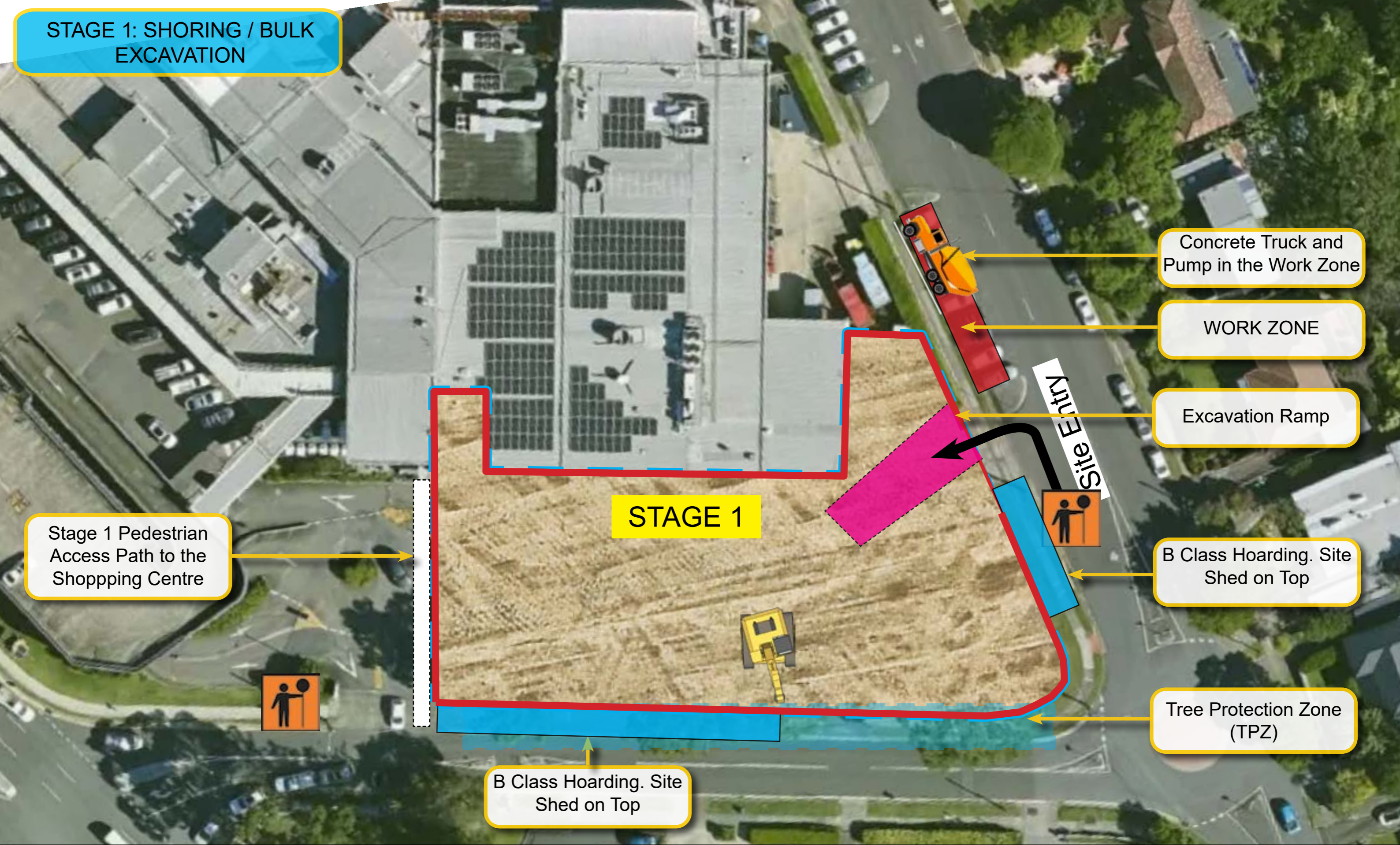
A Class Hoarding

Tree Protection Zone (TPZ)

GRACE AVE

RUSSELL AVE

STAGE 1: SHORING / BULK EXCAVATION



Concrete Truck and Pump in the Work Zone

WORK ZONE

Excavation Ramp

B Class Hoarding. Site Shed on Top

Tree Protection Zone (TPZ)

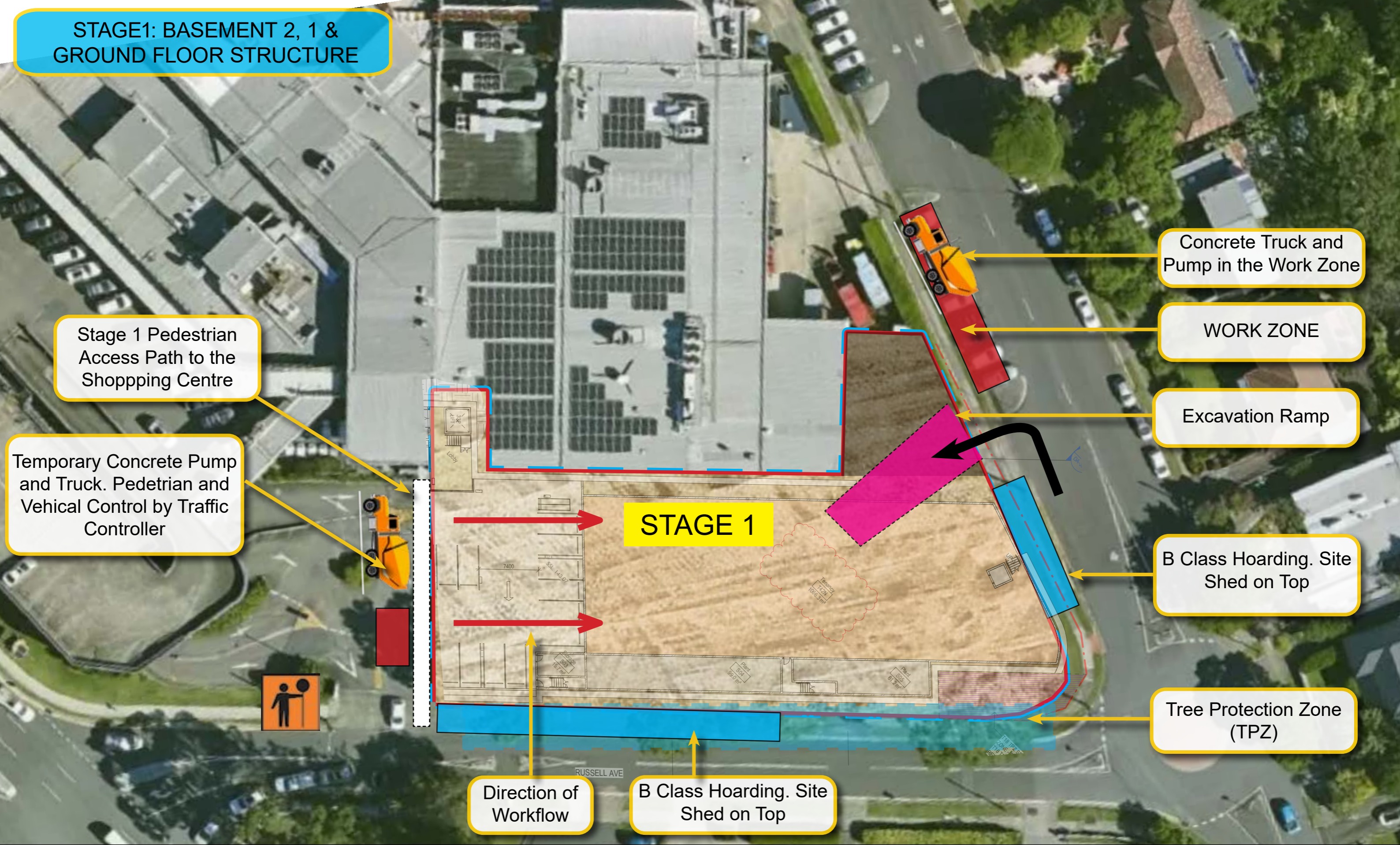
Stage 1 Pedestrian Access Path to the Shopping Centre

B Class Hoarding. Site Shed on Top

STAGE 1

Site Entry

STAGE1: BASEMENT 2, 1 & GROUND FLOOR STRUCTURE



Concrete Truck and Pump in the Work Zone

WORK ZONE

Excavation Ramp

B Class Hoarding. Site Shed on Top

Tree Protection Zone (TPZ)

Stage 1 Pedestrian Access Path to the Shopping Centre

Temporary Concrete Pump and Truck. Pedetrian and Vehical Control by Traffic Controller

Direction of Workflow

B Class Hoarding. Site Shed on Top

STAGE 2: DEMOLITION

Stage 1
Ground
level
Carpark

STAGE 2

Existing Car park
Demolition Work

Site Entry

Site Shed During
Demolition

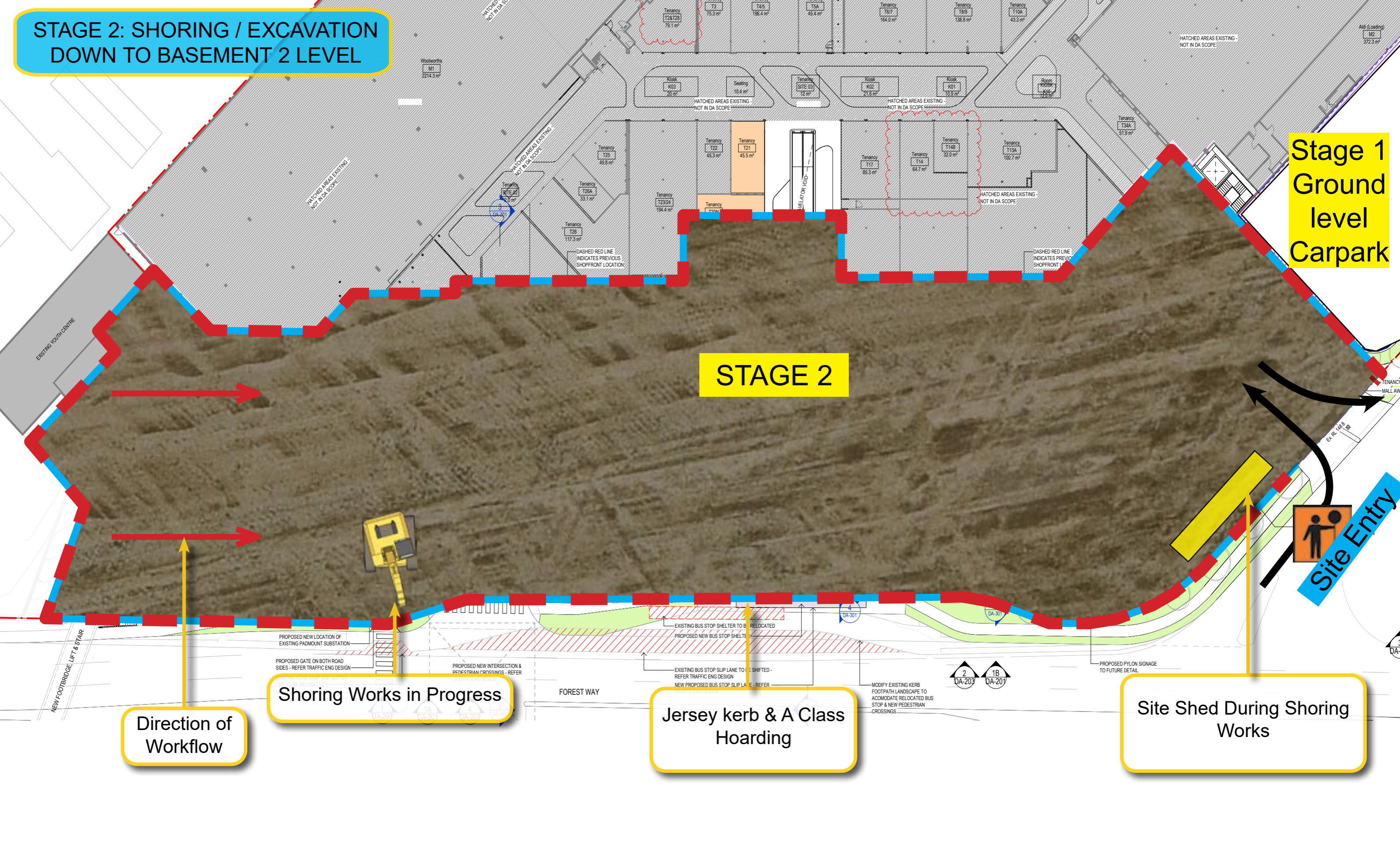
FOREST WAY

Jersey kerb & A Class
Hoarding

Site Entry

STAGE 2: SHORING / EXCAVATION DOWN TO BASEMENT 2 LEVEL

**Stage 1
Ground level
Carpark**



STAGE 2

Direction of Workflow

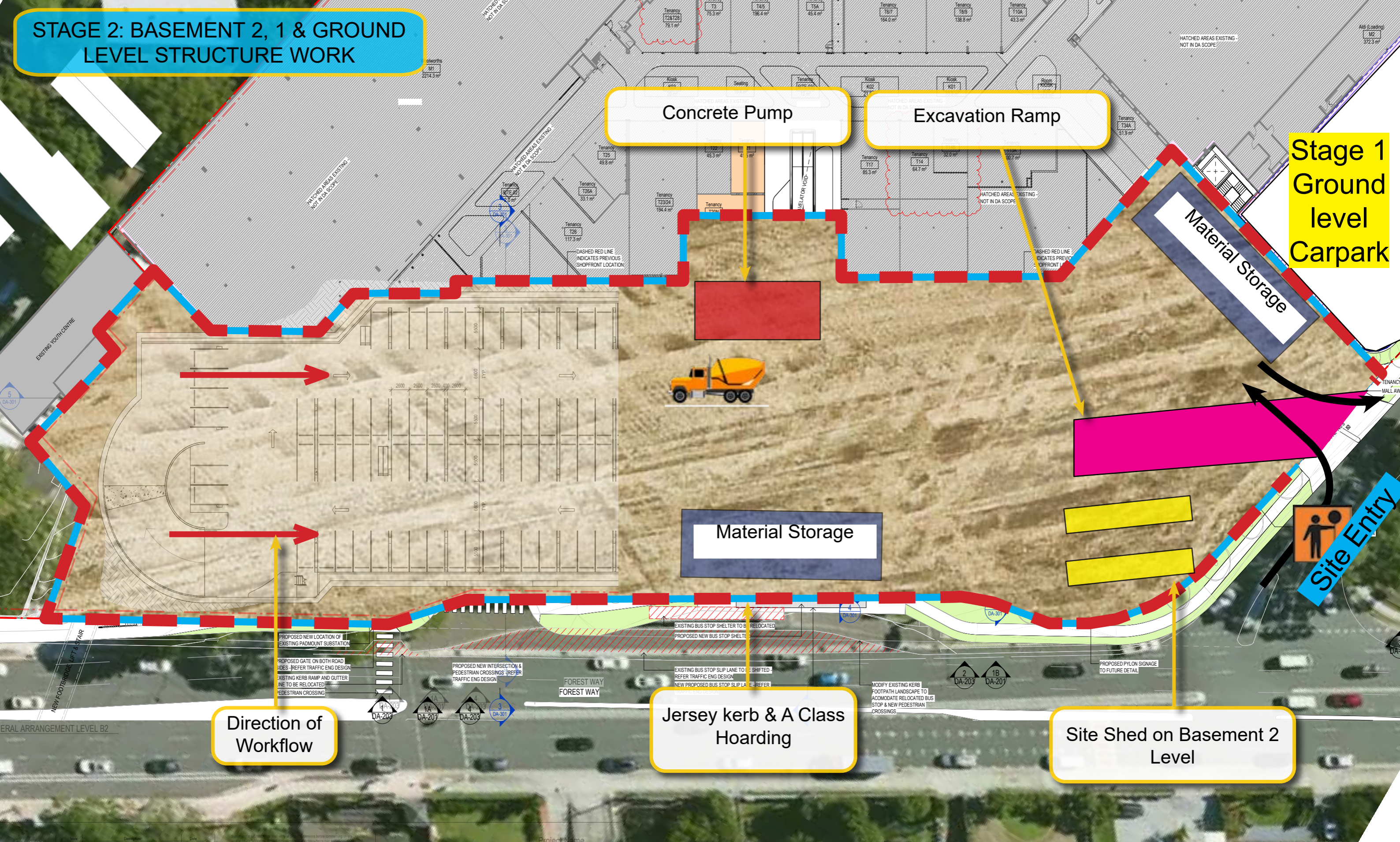
Shoring Works in Progress

Jersey kerb & A Class Hoarding

Site Shed During Shoring Works

Site Entry

STAGE 2: BASEMENT 2, 1 & GROUND LEVEL STRUCTURE WORK



Concrete Pump

Excavation Ramp

Stage 1
Ground
level
Carpark

Material Storage

Material Storage

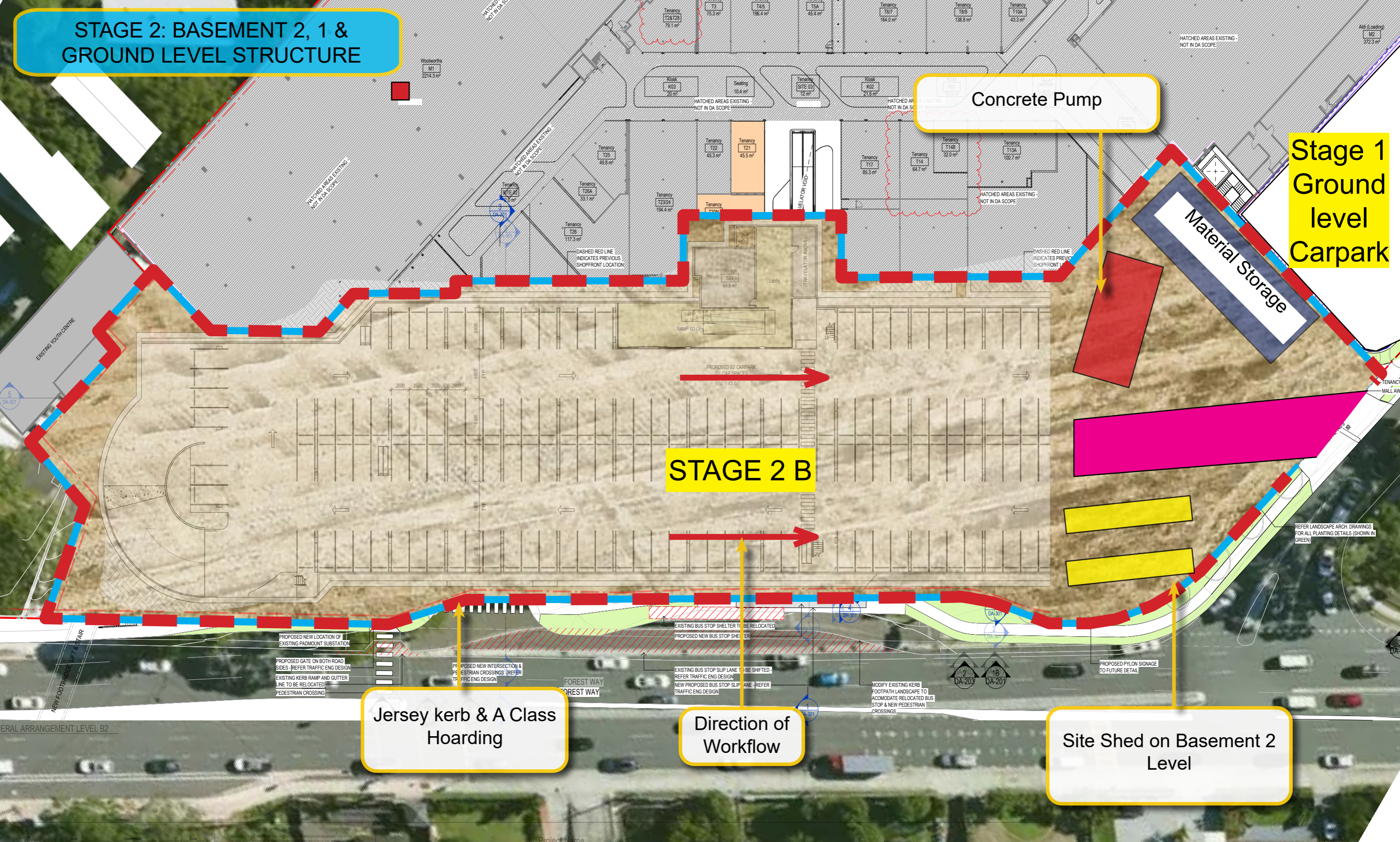
Site Entry

Direction of
Workflow

Jersey kerb & A Class
Hoarding

Site Shed on Basement 2
Level

STAGE 2: BASEMENT 2, 1 & GROUND LEVEL STRUCTURE



Concrete Pump

Stage 1 Ground level Carpark

Material Storage

STAGE 2 B

Jersey kerb & A Class Hoarding

Direction of Workflow

Site Shed on Basement 2 Level

STAGE 2: BASEMENT 2, 1 & GROUND LEVEL STRUCTURE

During the Stage 2 Car Park Construction, Shoppers will access to the Shopping Centre using new Lift and Stair and temporary access path from the Russell Avenue

Stage 1 Ground level Carpark

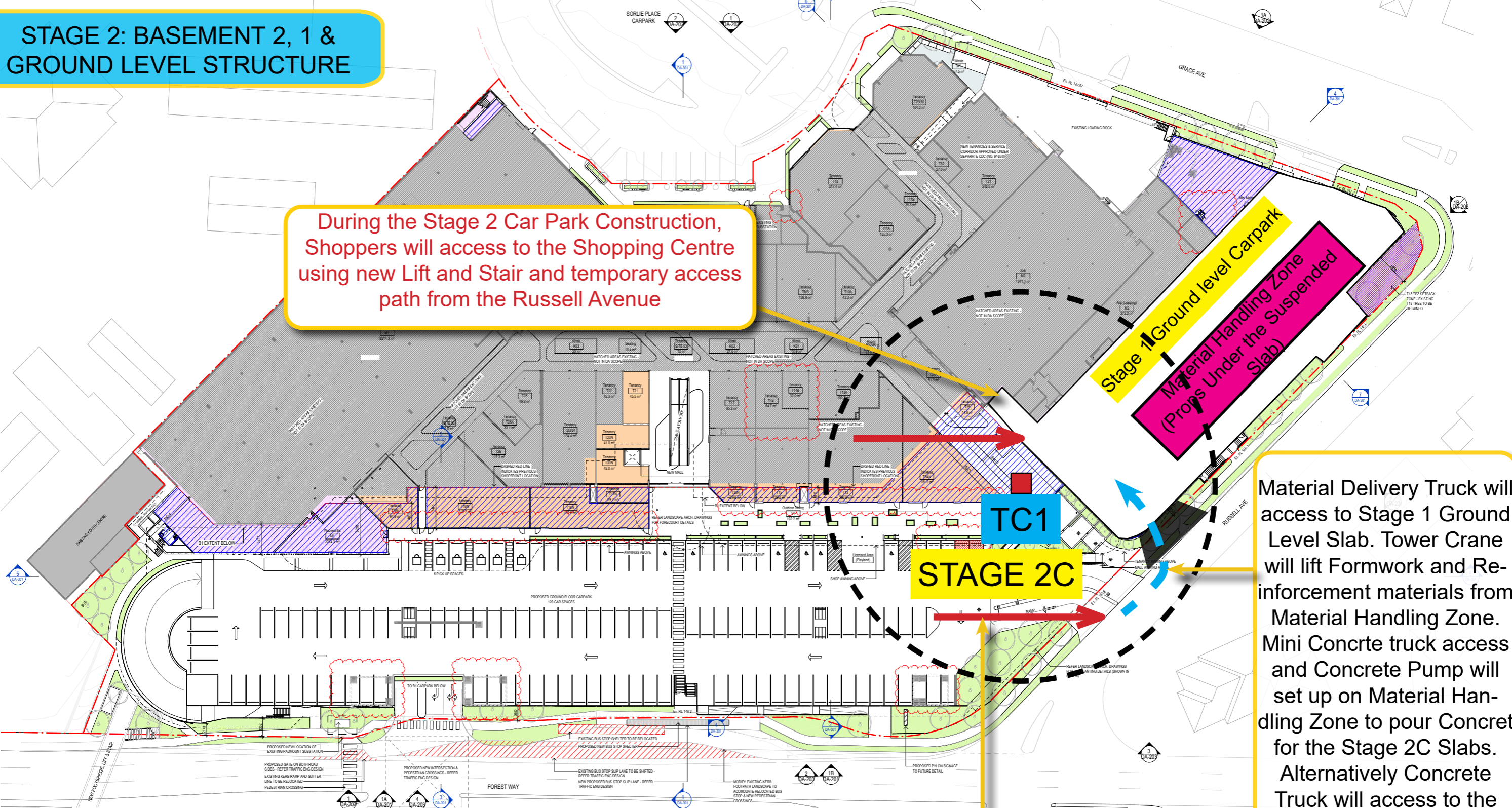
Material Handling Zone (Props Under the Suspended Slab)

TC1

STAGE 2C

Direction of Workflow

Material Delivery Truck will access to Stage 1 Ground Level Slab. Tower Crane will lift Formwork and Reinforcement materials from Material Handling Zone. Mini Concrete truck access and Concrete Pump will set up on Material Handling Zone to pour Concrete for the Stage 2C Slabs. Alternatively Concrete Truck will access to the Basement 1 via ramp on the Grace Ave. Line Pump will be used to pour concrete.



STAGE 2: MINI MAJOR AND FOREST WAY WORKS

WORK ZONE

During the Stage 2 Car Park Construction, Shoppers will access to the Shopping Centre using new Lift and Stair and temporary access path from the Russell Avenue

MINI MAJOR Structure, Building Envelope & Fitout Works

TC1
STAGE 2C

Temporary Material Handling Zone (Mini Major Construction)

Mini Major Retail Construction will Commence once the stage 2 Carpark Construction is Complete. During Mini Major Construction material Handling to occur from Russell Ave Workzone using a mobile crane and tower crane on site (TC1).

Forest Way Road Upgrade Works, Pedestrian Bridge Construction and Bus Stop Relocation will happen at the last stage of the Project. RMS Approval Required.