

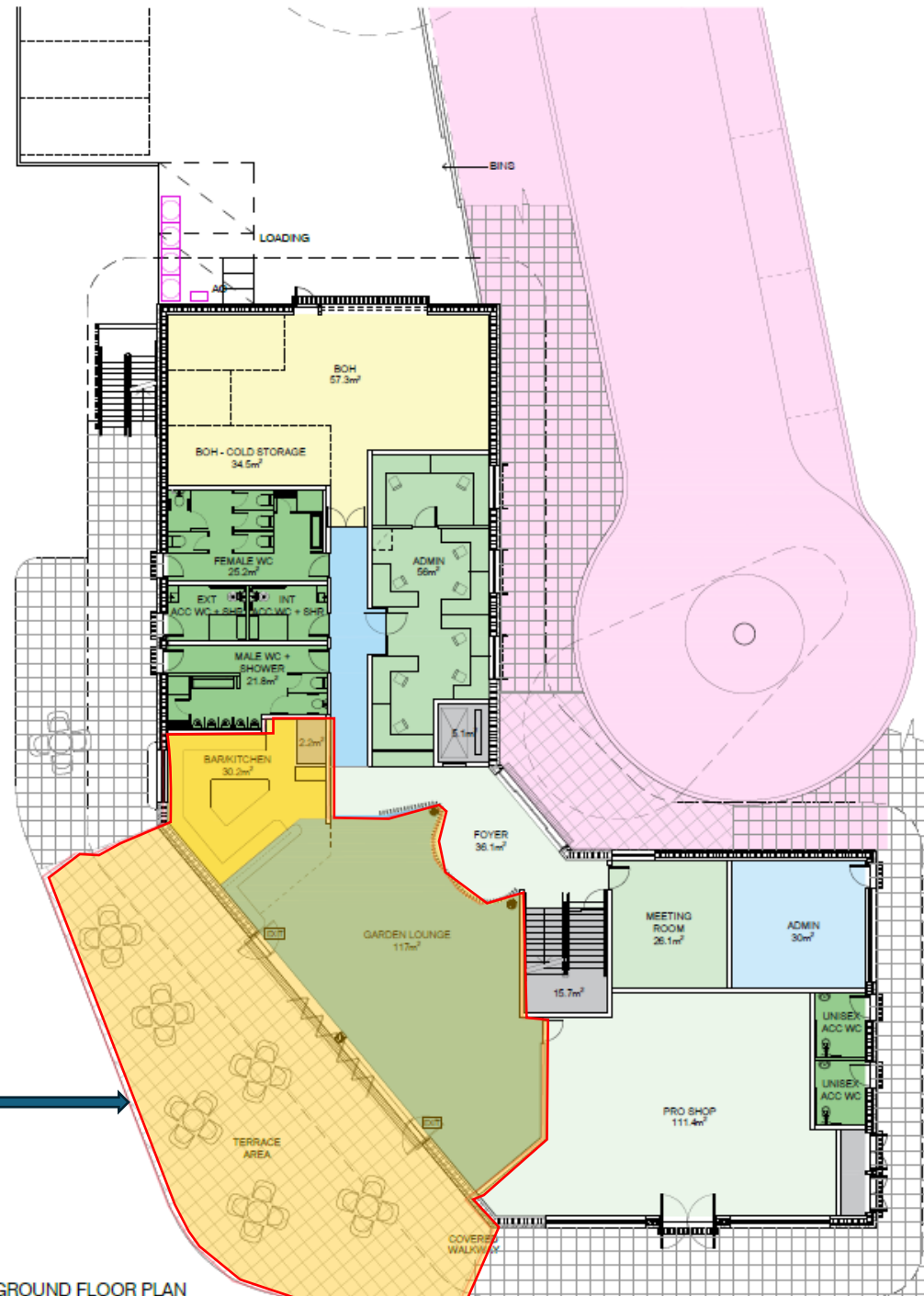
FLOOR AREA:

GROUND FLOOR:	
INTERNAL:	640m ²
EXTERNAL COVERED:	169m ²
EXTERNAL UNCOVERED:	155m ²

FIRST FLOOR:	
INTERNAL:	568m ²
EXTERNAL COVERED:	68m ²
EXTERNAL UNCOVERED:	163m ²

BOH	91.8m ²
- COLD STORAGE	28.3m ²
- REMAINDER	63.5m ²
ADMIN	86m ²
TOILETS	62.2m ²
BAR/KITCHEN	30.2m ²
STAIR 1	15.7m ²
PASSENGER LIFT	5.1m ²
GOODS LIFT 1	2.2m ²
INTERNAL WALLS	23.9m ²
CORRIDOR	17.2m ²
MEETING	26.1m ²
PRO SHOP	111.4m ²
PUBLIC TOILETS	11.4m ²
FOYER	36.1m ²
GARDEN BAR	117m ²
ELECTRICAL BOARD ROOM	3.7m ²
CAFÉ / RESTAURANT AREA	

SHARED ACCESS	637m ²
---------------	-------------------



GROUND FLOOR PLAN
1:100@A1

LEGEND:

Area	Perimeter	Area

ALL DIMENSIONS TO BE VERIFIED ON SITE. DIMENSIONS TO BE TAKEN AS PREFERRED TO SCALAR DIMENSIONS AND DIMENSIONS TO BE REFERRED TO ARCHITECT RECORD PROVISIONS. F. N. DOUBT, ASKI



GROUP ARCHITECTS
Registered Architect Julian Brinsley 0248
Group Architects Pty Limited ABN 42 898 989 059
8/9 Macquarie Street, ULLSWATER, NSW 2305
T: +61 2 9960 1055 E: info@grouparchitects.com.au

WARRINGAH GOLF CLUB

292 CONDOMINE RD
NORTH MANLY

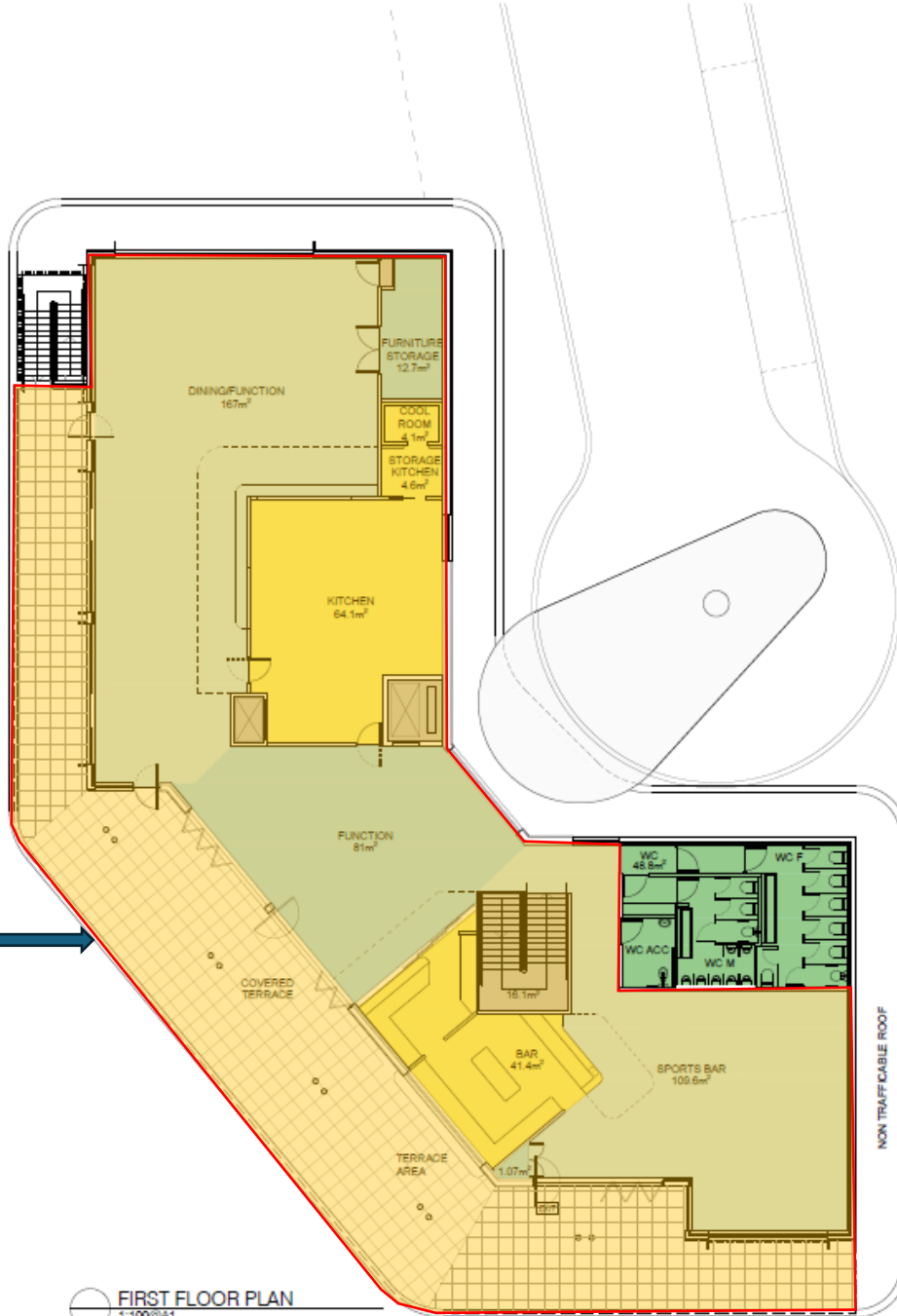
GROUND FLOOR AREAS

SCALE: 1:100@A1/1:200@A3
ISSUE: DATE: JAN 2024
DWG No.: GA2020-023-100

FLOOR AREA:

GROUND FLOOR:	
INTERNAL:	640m ²
EXTERNAL COVERED:	169m ²
EXTERNAL UNCOVERED:	155m ²
FIRST FLOOR:	
INTERNAL:	568m ²
EXTERNAL COVERED:	68m ²
EXTERNAL UNCOVERED:	163m ²

DINING/FUNCTION	167m ²
FUNCTION	80m ²
SPORTS BAR	109.6m ²
BAR	41.4m ²
KITCHEN	73.2m ²
STAIRS 1	16.1m ²
WC 1	48.8m ²
STORE	13.7m ²
PASSENGER LIFT	5.1m ²
GOODS LIFT 1	2.2m ²
INTERNAL STRUCTURE	10.4m ²
ELECTRICAL BOARD ROOM	0.5m ²
CAFÉ / RESTAURANT AREA	



FIRST FLOOR PLAN
1:100@A1

Legend

Hour	Weekday	Day

ALL DIMENSIONS TO BE VERIFIED ON SITE. DIMENSIONS TO BE TAKEN AS PREVIOUSLY TO SCALE DIMENSIONS AND DISCREPANCIES TO BE REFERRED TO ARCHITECT BEFORE PROCEEDING. **F N DUBET, ARCH**



GROUP ARCHITECTS
Grouped Architects - Julian Benschley 0248
Group Architects Pty Limited ABN 82 802 888 089
8/9 MARKATTA ST, LITTLETON NSW 2057
T: +61 2 9892 1055 E: info@grouparchitects.com.au

WARRINGAH GOLF CLUB

311/011/21
**292 CONDMINE RD
NORTH MANLY**

FIRST FLOOR AREAS

SCALE: 1:100@A1/1:200@A3
ISSUE: DATE: JAN 2024