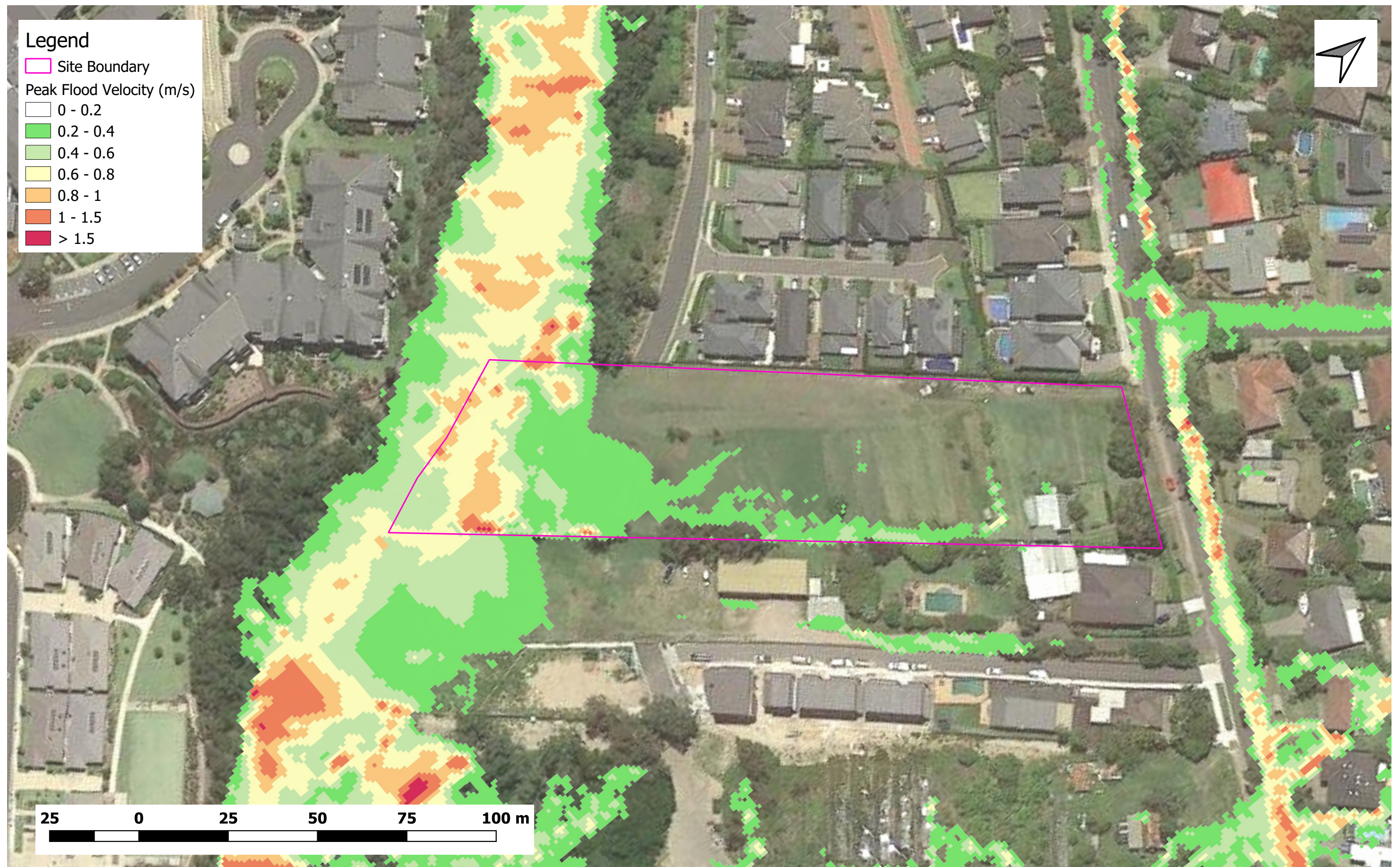


Storm endeavours to ensure that the information provided in this map is correct at the time of publication. Storm does not warrant, guarantee or make representations regarding the currency and accuracy of information contained within this map.

Title:

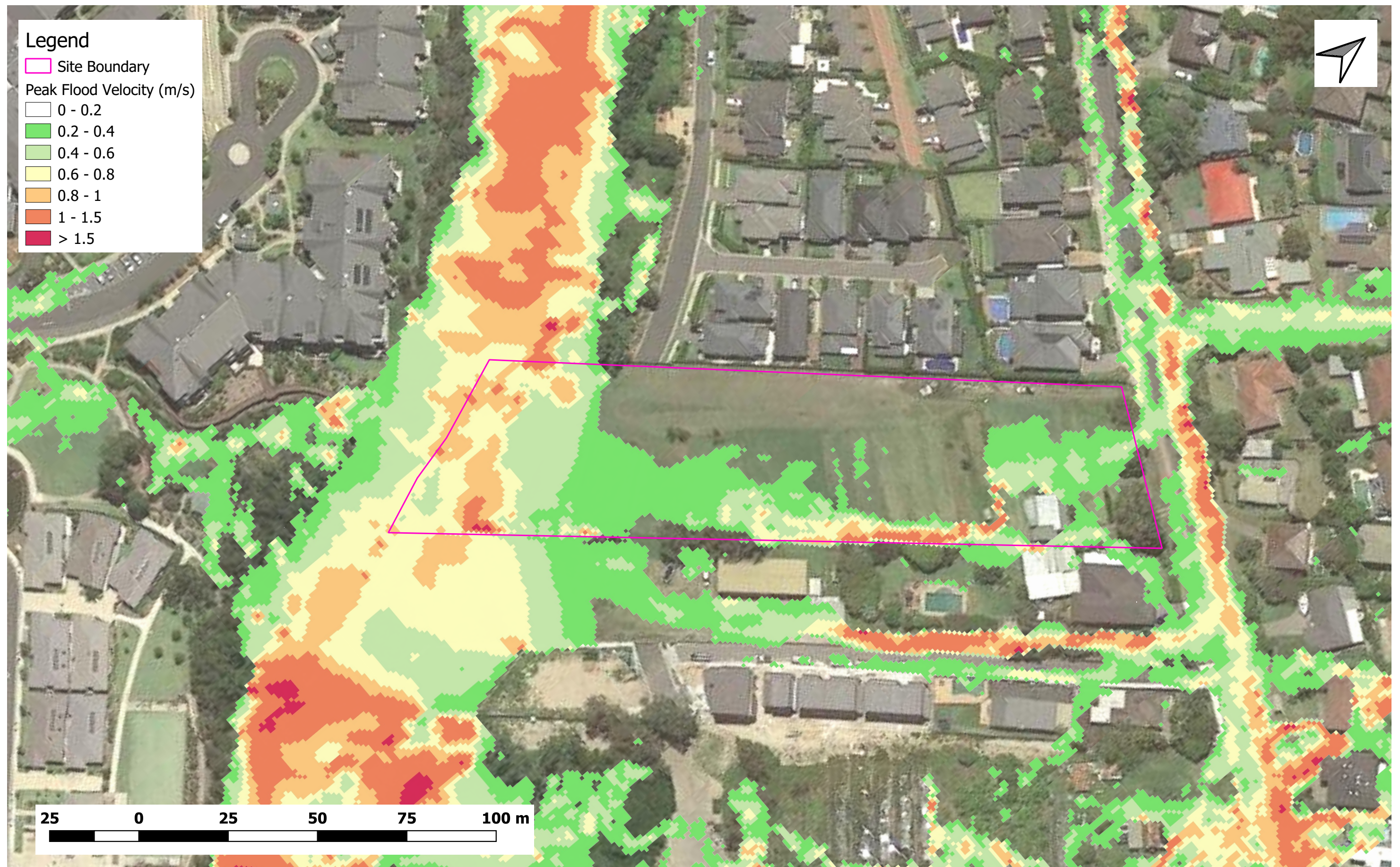
**Figure C1 - Existing Condition
Peak Flood Velocity (50% AEP)
53A Warriewood Road, Warriewood
Project Number: 434-20**



Storm endeavours to ensure that the information provided in this map is correct at the time of publication. Storm does not warrant, guarantee or make representations regarding the currency and accuracy of information contained within this map.

Title:

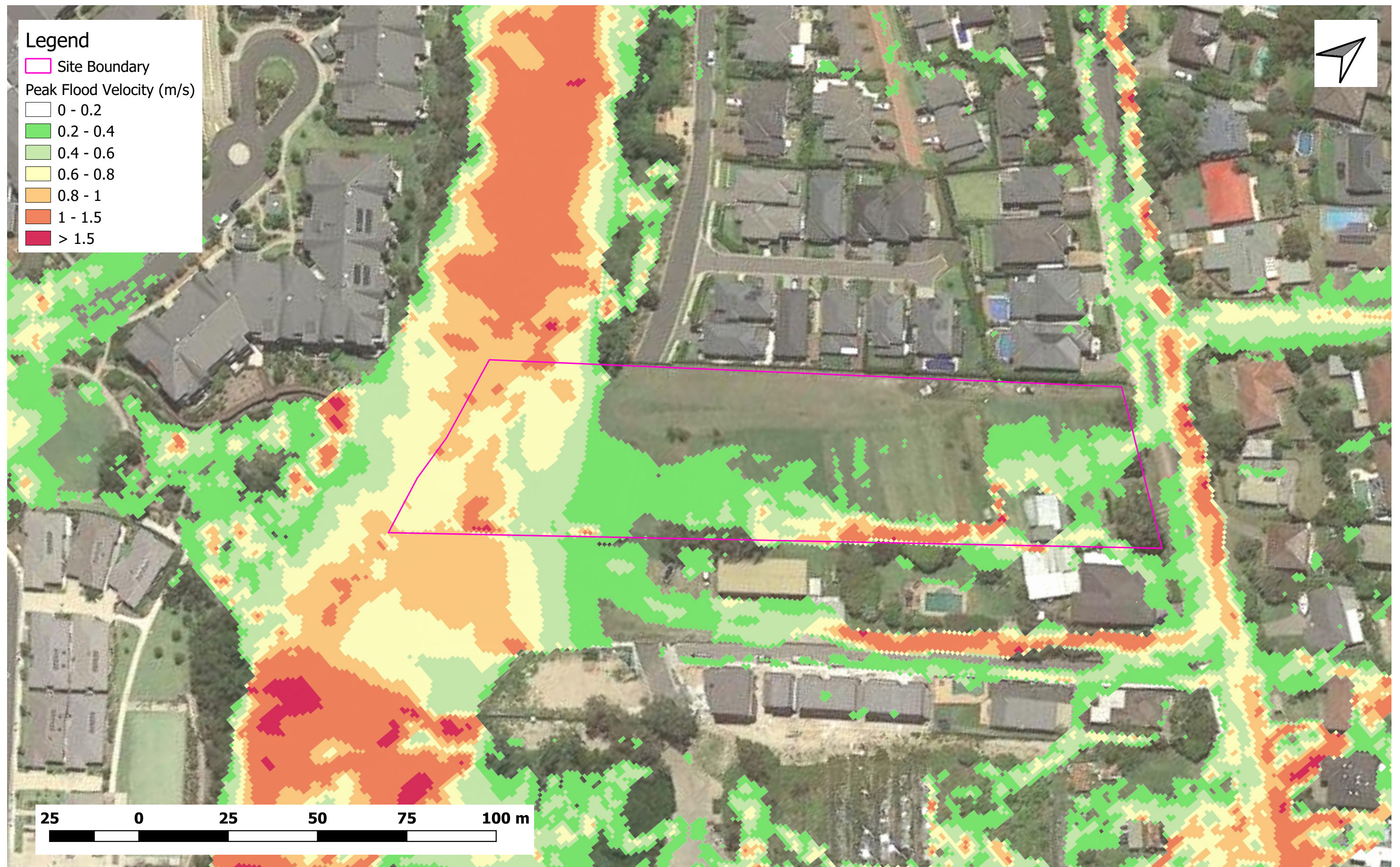
**Figure C2 - Existing Condition
Peak Flood Velocity (20% AEP)
53A Warriewood Road, Warriewood
Project Number: 434-20**



Storm endeavours to ensure that the information provided in this map is correct at the time of publication. Storm does not warrant, guarantee or make representations regarding the currency and accuracy of information contained within this map.

Title:

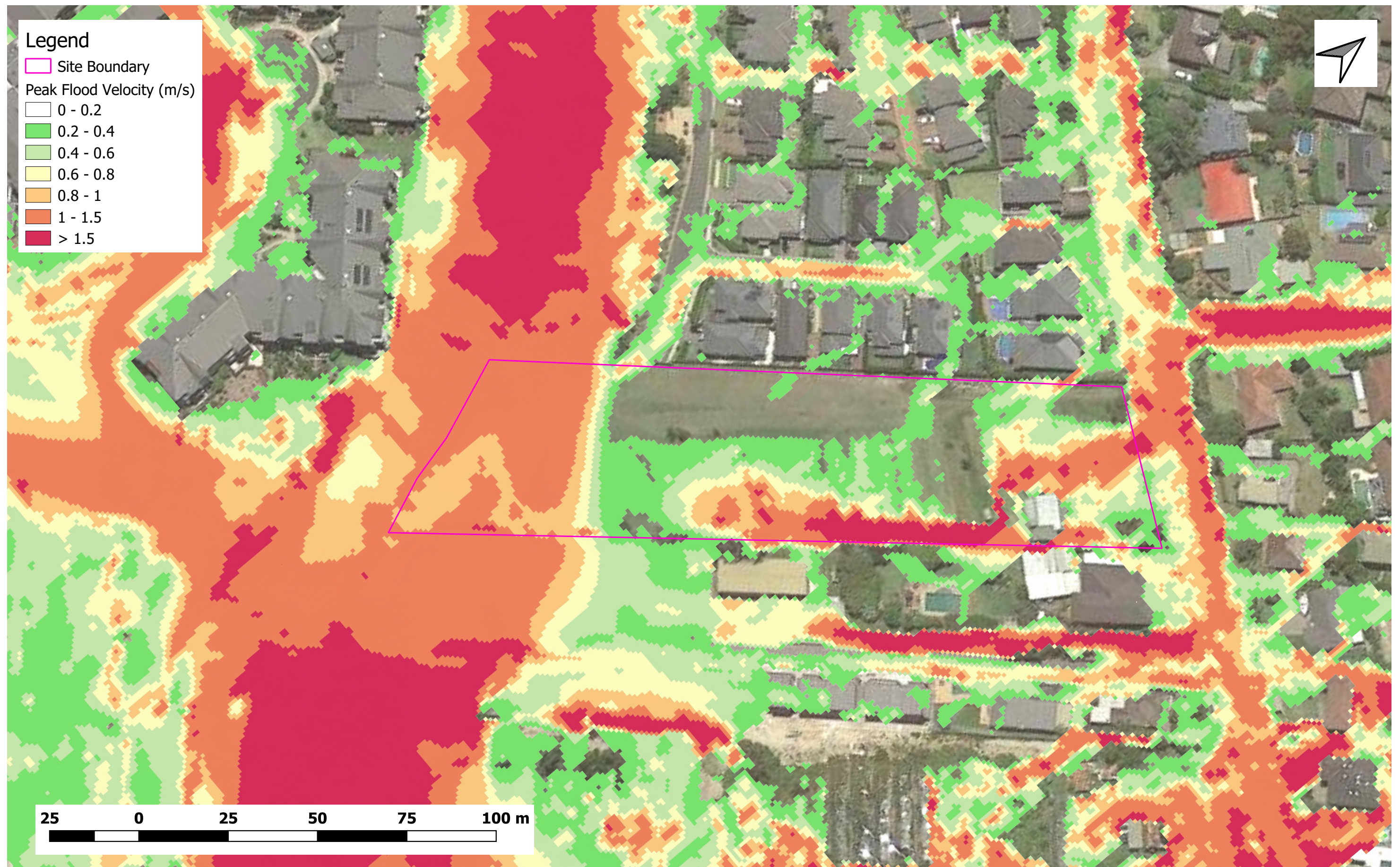
**Figure C3 - Existing Condition
Peak Flood Velocity (1% AEP)
53A Warriewood Road, Warriewood
Project Number: 434-20**



Storm endeavours to ensure that the information provided in this map is correct at the time of publication. Storm does not warrant, guarantee or make representations regarding the currency and accuracy of information contained within this map.

Title:

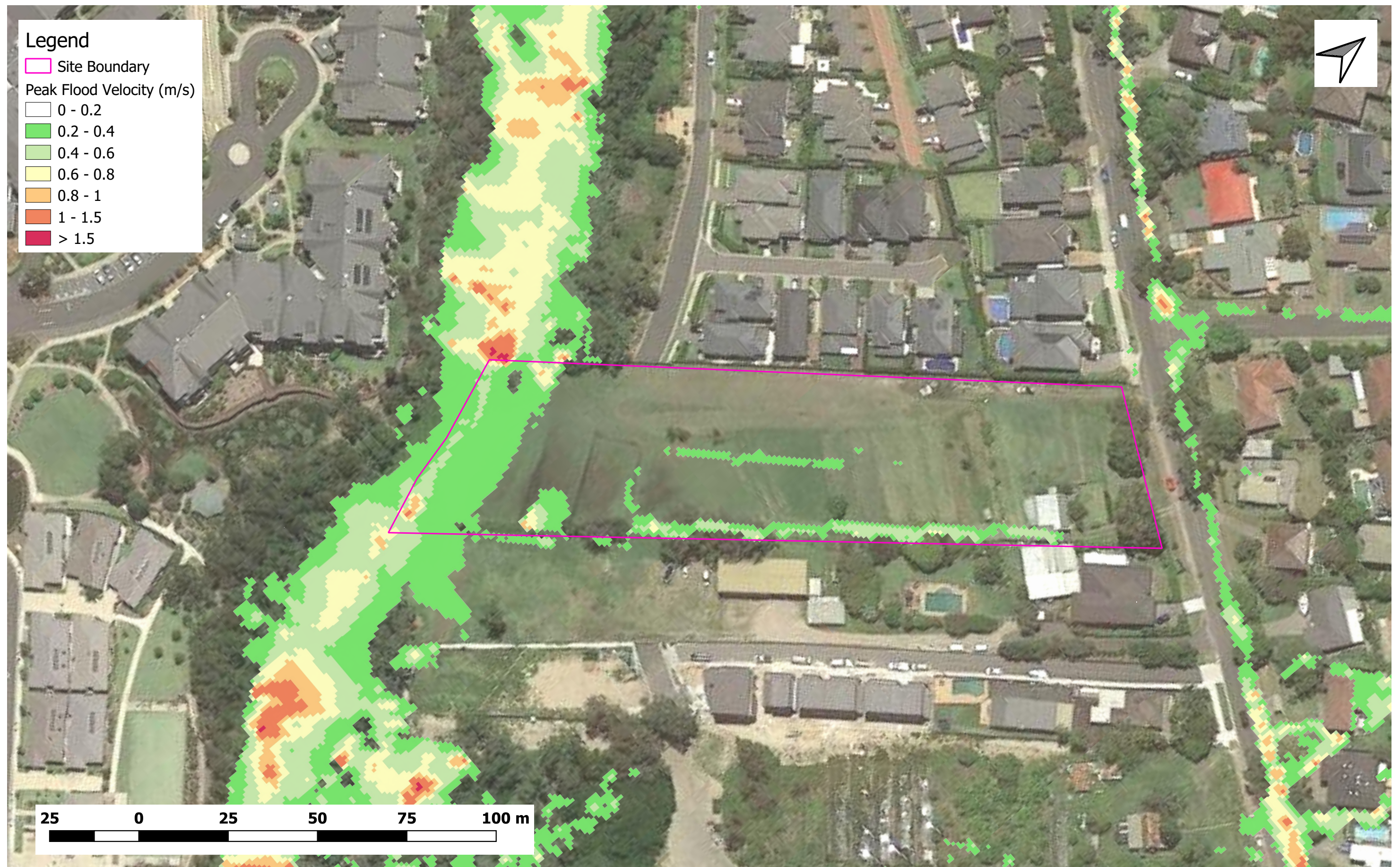
**Figure C4 - Existing Condition
Peak Flood Velocity (1% AEP with Climate Change)
53A Warriewood Road, Warriewood
Project Number: 434-20**



Storm endeavours to ensure that the information provided in this map is correct at the time of publication. Storm does not warrant, guarantee or make representations regarding the currency and accuracy of information contained within this map.

Title:

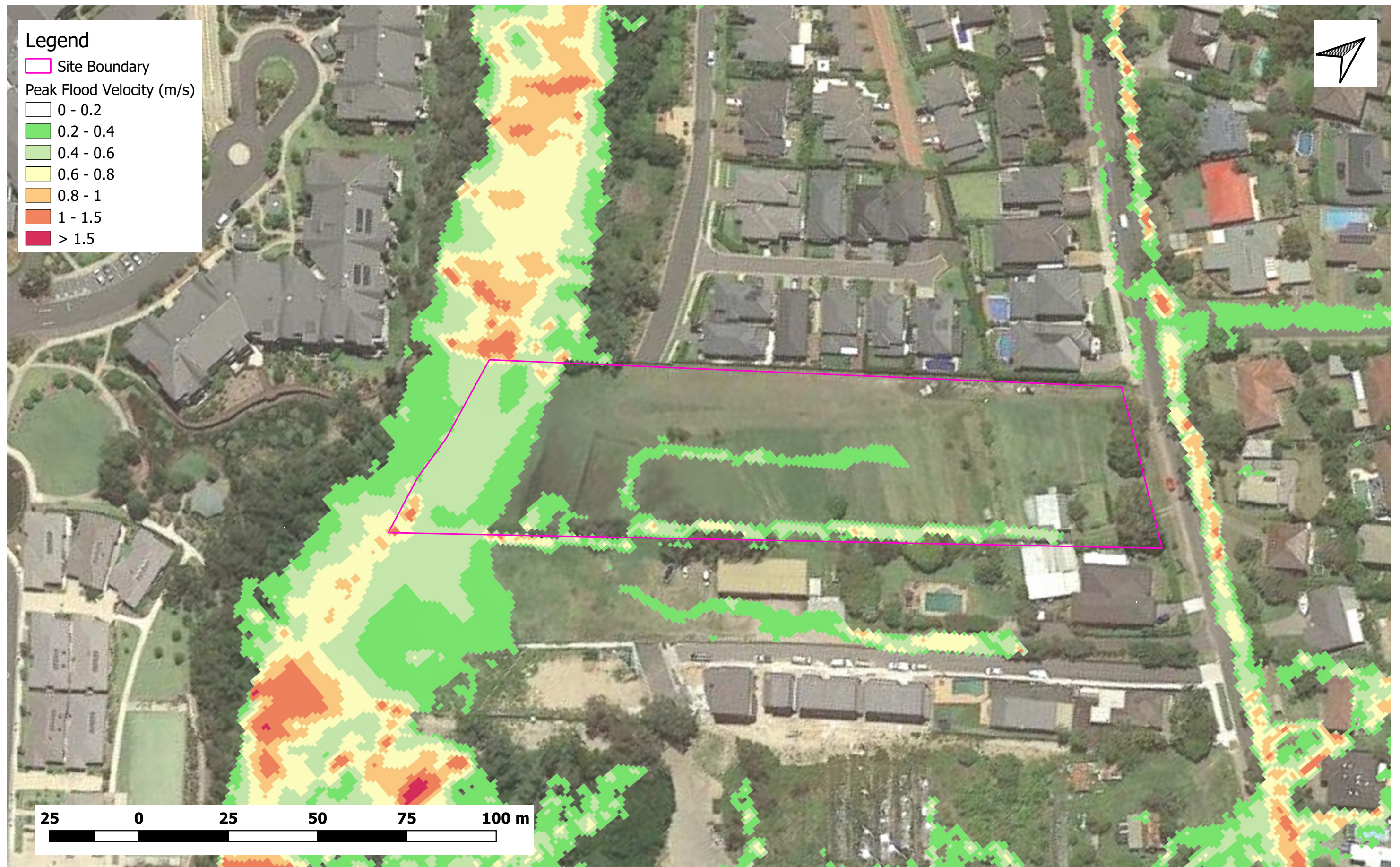
**Figure C5 - Existing Condition
Peak Flood Velocity (PMF)
53A Warriewood Road, Warriewood
Project Number: 434-20**



Storm endeavours to ensure that the information provided in this map is correct at the time of publication. Storm does not warrant, guarantee or make representations regarding the currency and accuracy of information contained within this map.

Title:

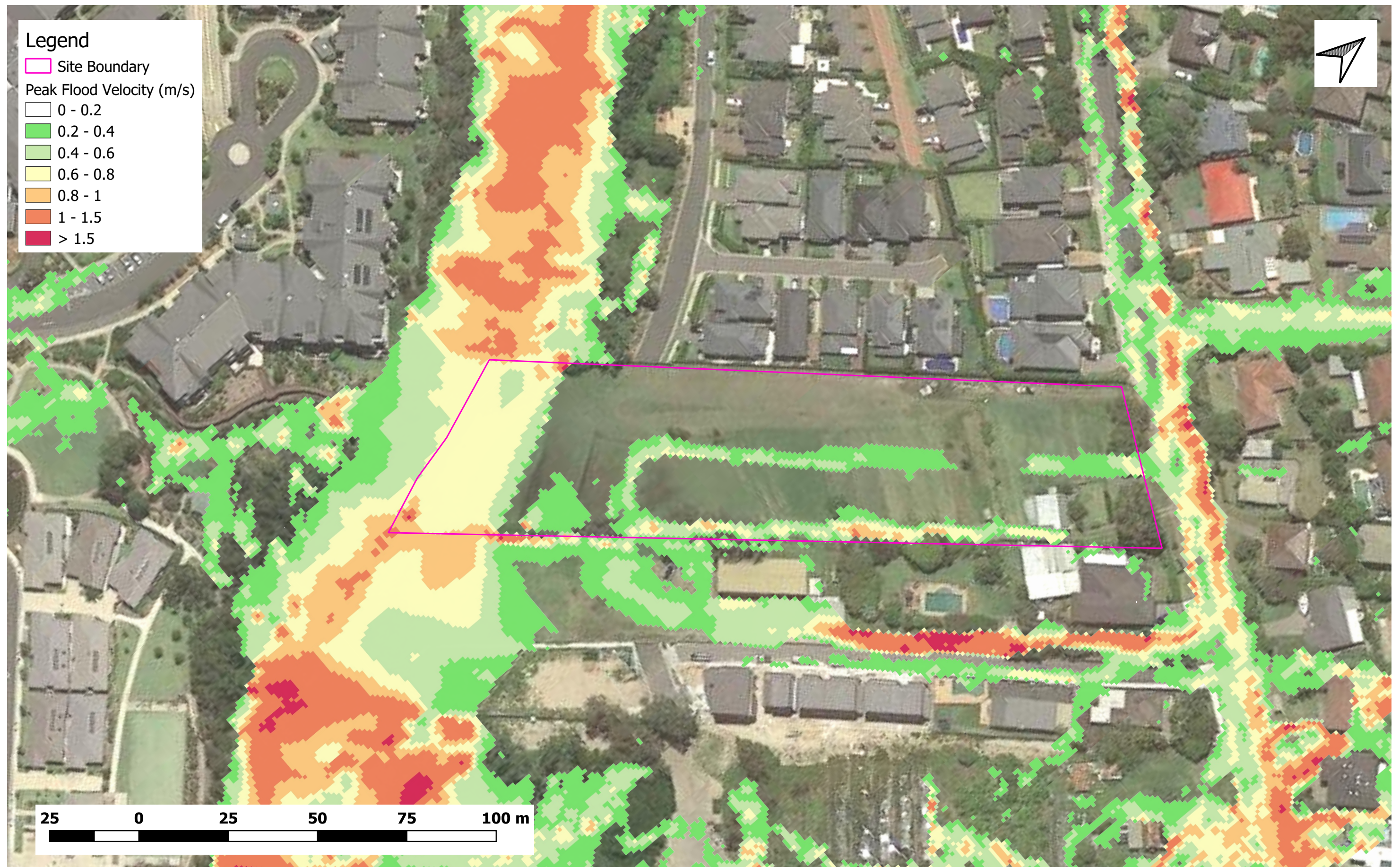
**Figure C6 - Proposed Condition
Peak Flood Velocity (50% AEP)
53A Warriewood Road, Warriewood
Project Number: 434-20**



Storm endeavours to ensure that the information provided in this map is correct at the time of publication. Storm does not warrant, guarantee or make representations regarding the currency and accuracy of information contained within this map.

Title:

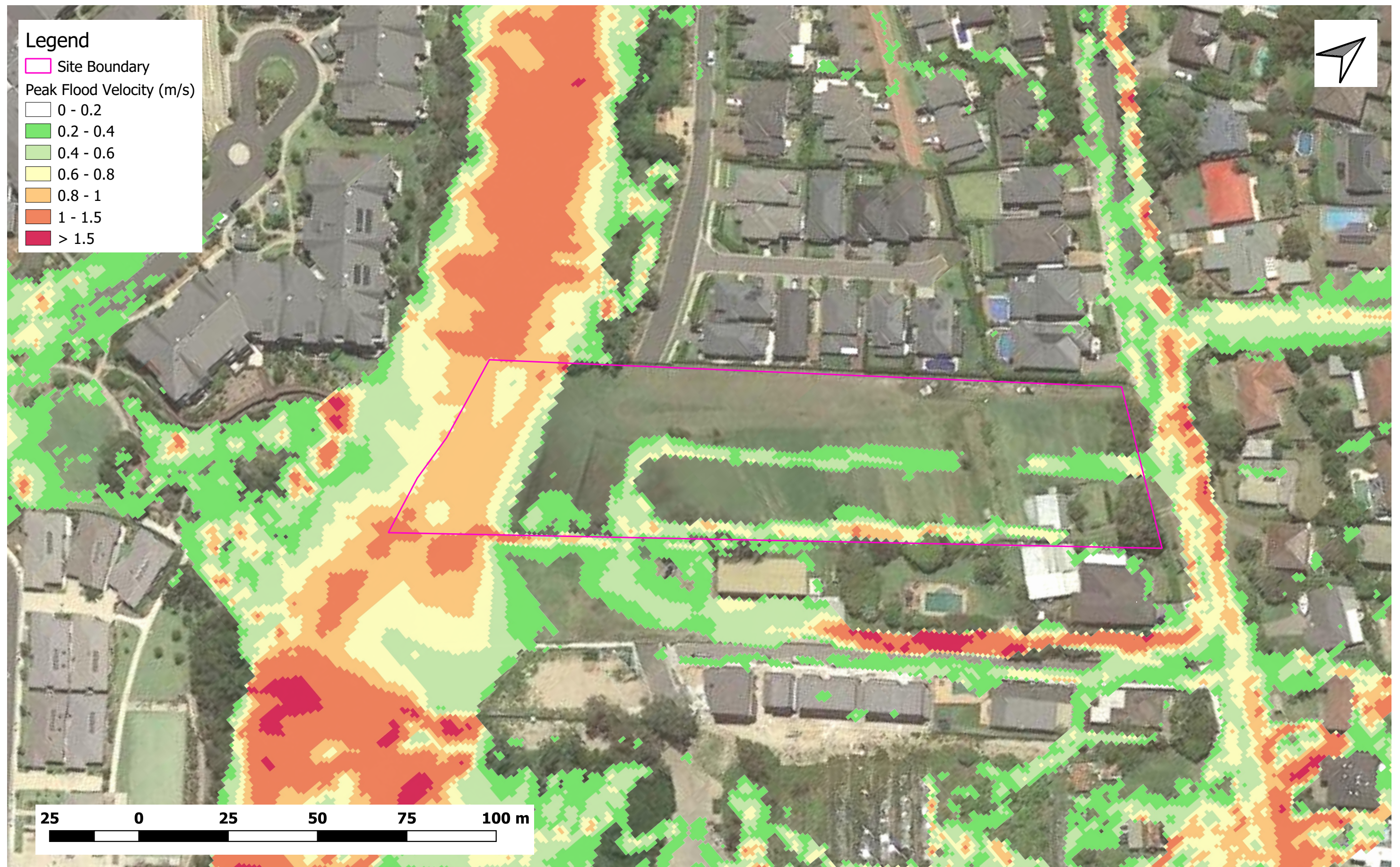
**Figure C7 - Proposed Condition
Peak Flood Velocity (20% AEP)
53A Warriewood Road, Warriewood
Project Number: 434-20**



Storm endeavours to ensure that the information provided in this map is correct at the time of publication. Storm does not warrant, guarantee or make representations regarding the currency and accuracy of information contained within this map.

Title:

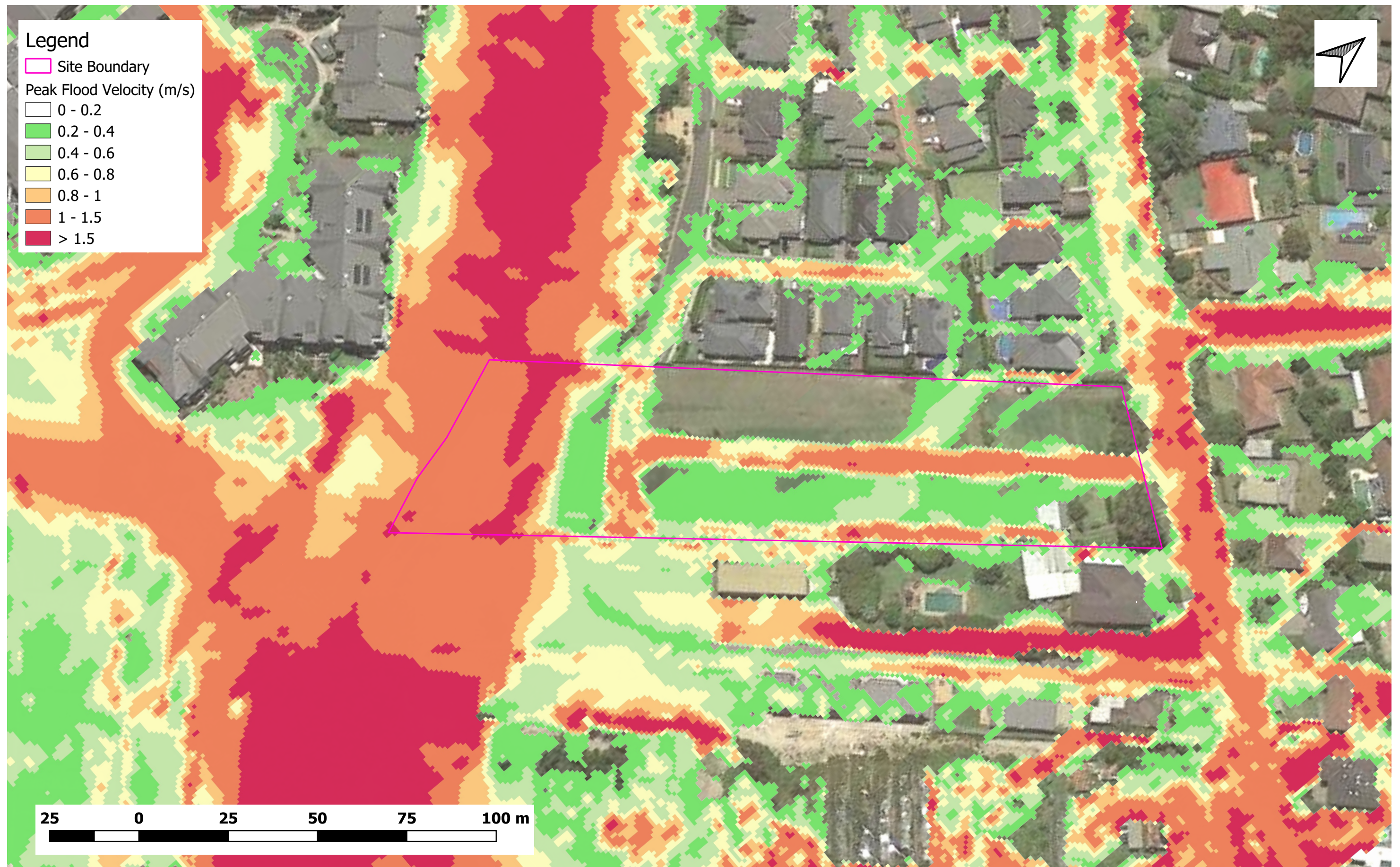
**Figure C8 - Proposed Condition
Peak Flood Velocity (1% AEP)
53A Warriewood Road, Warriewood
Project Number: 434-20**



Storm endeavours to ensure that the information provided in this map is correct at the time of publication. Storm does not warrant, guarantee or make representations regarding the currency and accuracy of information contained within this map.

Title:

**Figure C9 - Proposed Condition
Peak Flood Velocity (1% AEP with Climate Change)
53A Warriewood Road, Warriewood
Project Number: 434-20**



Storm endeavours to ensure that the information provided in this map is correct at the time of publication. Storm does not warrant, guarantee or make representations regarding the currency and accuracy of information contained within this map.

Title:

**Figure C10 - Proposed Condition
Peak Flood Velocity (PMF)
53A Warriewood Road, Warriewood
Project Number: 434-20**